

2024

MUHAMMED SHIHAS VADAKKAYIL

BLOOM



BLOOM

THE STORY OF CAPITAL
VIEW CANCER CENTER



MUHAMMED SHIHAS VADAKKAYIL

"We shape our buildings; thereafter they shape us."

Winston Churchill

INTRODUCING
BRAVE BLOSSOMS



Shopping Area Interior

Scan for more information



bvccenter

From Our Heart to Yours: Gifts of Courage

877-MY-BCVCENTER bvccenter.com

#ThinkForwardBCwalu

Strength shines brightest together.



Entrance lobby



A. Ray Pentecost,
FAIA, FACHA, LEED AP
Committee Chair



Kirk Hamilton, FAIA,
FACHA, FCCM, EDAC
Committee Co-Chair



Zhipeng Lu
Committee Member



Brian Gibbs
Studio Professor



Rosaleen D. Bloom,
PHD, APRN, ACNS-BC,
AOCNS
Committee Member



Muhammed Shihab
Vadakkayil
Student

C O M M I T T E E

A. Ray Pentecost

Kirk Hamilton

Z h i p e n g L u

Rosaleen D. Bloom

B r i a n G i b b s

ACKNOWLEDGMENT

I extend my heartfelt gratitude to the esteemed members of my committee, Dr. Ray Pentecost, and Dr. Kirk Hamilton, for their unwavering support, insightful guidance, and invaluable mentorship throughout the journey of my final study. Their expertise, encouragement, and constructive criticism have been instrumental in shaping the outcome of this endeavor.

I am equally indebted to Dr. Rosaleen Bloom and Dr. Zhipeng Lu, whose expertise and feedback have enriched my research and contributed significantly to the refinement of my final study. Their commitment to excellence and dedication to the field of architecture have inspired me to strive for greater heights in my academic and professional pursuits.

Special appreciation is extended to my studio professor, Brian Gibbs, whose mentorship, and encouragement have been invaluable. His passion for design and commitment to fostering creativity have left an indelible mark on my approach to architecture.

I am also grateful to my studio mates for their camaraderie, stimulating discussions, and unwavering support throughout this journey. Our collaborative efforts have not only enriched my learning experience but have also underscored the importance of teamwork in the design process.

Lastly, I would like to express my deepest appreciation to my family and friends for their unwavering belief in me. Their love, encouragement, and unwavering support have been my pillar of strength, motivating me to persevere even in the face of challenges.

To everyone who has contributed to this endeavor in one way or another, I extend my heartfelt thanks.

ABSTRACT

The Capital View Cancer Center, a state-of-the-art facility dedicated to the treatment and support of women diagnosed with various types of cancer, including Ts. This project is a theoretical exploration aimed at creating a nurturing and empowering environment that addresses the unique needs—physical, emotional, and psychological—of biologically identified female cancer patients. The design integrates evidence-based architectural principles, cutting-edge technology, and sustainable practices to optimize the healing environment and enhance patient and staff experience.

The primary objective of the center is to provide a space that embodies comfort, healing, and empowerment. The center's layout includes advanced treatment rooms that ensure privacy, efficiency, and comfort, featuring soothing natural views and personalized spaces tailored to patient needs. Supporting facilities such as counseling rooms, meditation areas, group therapy spaces, a food pharmacy, and a community garden are designed to offer comprehensive care. These spaces facilitate emotional support, stress reduction, and communal interaction, which are crucial for the psychological well-being of patients undergoing treatment.

The hypothetical clientele includes prestigious institutions like MD Anderson Cancer Center, Dell Medical Center, and Texas A&M School of Agriculture and Life Sciences, underscoring the academic and research-oriented nature of this project. This thesis not only highlights the practical application of architectural theories and practices but also contributes to the broader discourse on healthcare architecture, particularly in the design of women-specific cancer care facilities. Through the Capital View Cancer Center, this study endeavors to set a benchmark for future developments in healthcare environments that are both healing and empowering for women battling cancer. This project is strictly a hypothetical academic exercise for a Master's in Architecture program at Texas A&M university and does not involve actual client engagements.

Table of contents

12.INTRODUCTION
20.MOTIVATION
24.PROGRAMMING
28.DEVELOPMENT
42.PROPOSAL

CONCLUSION
BIBLIOGRAPHY



In the landscape of healthcare, certain initiatives stand out not just for their innovation, but for the profound impact they promise to have on the lives of individuals. Austin's Women's Cancer Center is one such initiative, born from the collaborative efforts of MD Anderson, Dell Medical Center, and the College of Architecture Texas A&M*. This center emerges as a beacon of hope and healing for female patients facing the daunting battle against cancer specified to biologically identified females.

At the heart of Austin's Women's Cancer Center lies a mission that transcends the boundaries of traditional healthcare. It is a mission rooted in revolutionizing cancer care for women, not merely through treatment modalities, but by providing a sanctuary of support and solace during their most challenging times. In a world often fraught with fear and uncertainty, this center aims to be a steadfast companion, offering not just medical expertise, but also a shoulder to lean on and a hand to hold.

Spanning an impressive 441,216 square feet and rising through 10 floors, the physical embodiment of the center speaks volumes about the commitment to excellence it embodies. Two entire floors are dedicated to parking, a thoughtful gesture ensuring that accessibility is never a barrier for patients and their loved ones seeking care.

The specialties offered at Austin's Women's Cancer Center span across a spectrum of women's cancers, encompassing breast cancer, uterine cancer, vulvar cancer, vaginal cancer, ovarian cancer, and cervical cancer. Each specialty represents a dedicated team of experts, poised to provide personalized care and support tailored to the unique needs of each patient.

Yet, beyond clinical excellence and medical prowess lies a deeper vision for the Women's Cancer Center. It aspires to be more than just a healthcare facility; it aims to be a sanctuary for healing, a space where patients find not only treatment for their physical ailments but also solace for their emotional and spiritual well-being. This vision is underscored by the seamless integration of cutting-edge medical technology, compassionate care, and innovative architectural design.

Austin's Women's Cancer Center represents a paradigm shift in cancer care for women. It is a testament to the power of collaboration, compassion, and commitment in the face of adversity. Through its doors, patients find not only treatment but also empowerment, healing, and hope. It is a place where every step forward is a testament to the strength, resilience, and the collective compassion of those who walk this journey together. Welcome to Austin's Women's Cancer Center - where the promise of a brighter tomorrow shines brightest in the darkest of times.

01. INTRODUCTION

**“Together,
we fight.
Together,
we win.”**



Exterior view from Red River Street

CLIENT PERSPECTIVE



THE UNIVERSITY OF TEXAS
**MD Anderson
Cancer Center**

Making Cancer History®



**AGRICULTURE
& LIFE SCIENCES**
TEXAS A&M UNIVERSITY



OUR VISION

"At the heart of our Capital View Cancer Care Center lies a steadfast commitment to transforming the landscape of women's oncology. We envision a sanctuary where cutting-edge science and holistic care converge, offering a beacon of hope and healing for women battling cancer. Through personalized treatments, pioneering research, and unwavering support, we aim to empower each woman on her unique journey, fostering resilience, dignity, and wellness. Our vision extends beyond the confines of medical intervention; it seeks to cultivate a community where every woman feels seen, heard, and valued, driving advancements that resonate through generations. Together, we strive to redefine cancer care, ensuring that every woman has access to the tools, knowledge, and support necessary to thrive, not just survive. Our goal is a future where the shadow of cancer is diminished by the light of breakthroughs, compassion, and empowerment, making every woman's health and well-being our paramount pursuit."



Activity Hub in the in patient unit

110
IN PATIENT BEDS

76000
OUT PATIENT VISITS

441216
SQFT AREA

08
OPERATING ROOMS

CANCER SPECIALTIES

BREAST CANCER
CERVICAL CANCER
OVARIAN CANCER
UTERINE CANCER
VAGINAL CANCER
VULVAR CANCER



“My journey with breast cancer began on a cold morning in February, when the world as I knew it irreversibly changed with just three words: “You have cancer.” The initial shock was overwhelming, but as I navigated through the complex maze of treatments and decisions, I discovered the true strength derived from love, support, and care.

My family and friends were my rock. Their unwavering support shone brightly during my darkest days. They accompanied me to my appointments, ensuring I was never alone in the cold, sterile rooms of the clinic. We often joked that my sister could have earned a degree in oncology nursing for all the knowledge she accumulated and shared with me, always making sure I understood the medical jargon that was thrown my way.

Nutrition became a pivotal part of my recovery. My friend Lisa, who is a dietitian, helped tailor my meals to boost my immune system, which was battered by chemotherapy. We focused on a plant-based diet rich in antioxidants and lean proteins. I noticed that with this diet, my energy levels were better maintained, and my body felt more prepared to tackle the next treatment.

Exercise was another cornerstone of my daily routine, albeit less rigorous than before. My oncologist emphasized the importance of physical activity to improve treatment outcomes and overall well-being. Supported by my family, I took gentle walks and practiced yoga, which not only aided my physical recovery but also provided immense mental relief.

Amidst this, the hospital environment played a crucial role in my treatment experience. I yearned for tranquility within those walls—quiet hallways and waiting areas, and private rooms were not just preferences but necessities that helped maintain my emotional and mental wellbeing. The peaceful moments I spent in the hospital’s garden, listening to the subtle sounds of nature, were as therapeutic as the treatments themselves.”

Catherin
Cancer survivor

02. MOTIVATION



1 in 8 women

in the United States will develop breast cancer in her lifetime.

SOURCE: AMERICAN CANCER SOCIETY



Breast cancer is the **leading cause of cancer death**

for Latin women living in the U.S.



In 2023, an estimated **43,700 women** will die from breast cancer in the US.

In 2023, an estimated **297,790 new cases** of invasive breast cancer will be diagnosed on women in the U.S.

Health Care Domains Unique to Women

Sex-Specific Care

Care related to health needs that are sex-specific

Sex-Aware Care

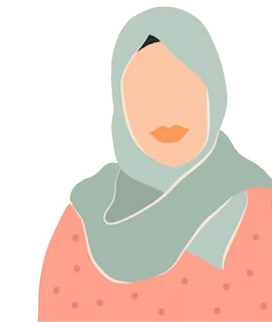
Care for conditions that are diagnosed or treated in sex-specific ways

Gender-Sensitive Care

Care provided in ways that reflect gender-specific preferences



"I am a parent to a child with Down syndrome, and due to their specific needs, I am unable to leave them unattended in order to seek medical treatment at the hospital."



"My family and friends hold immense significance in my life. The hospital setting can be quite overwhelming, and having them by my side during this challenging cancer journey would provide great comfort and support."



"As a woman of African descent, I have encountered instances of discrimination in various settings, including healthcare facilities. My earnest desire is to receive treatment on equal terms, just like any other individual."



"I am a survivor of sexual assault, and the idea of being in a confined environment makes me feel unsafe. Consequently, the thought of going to the hospital fills me with fear."



"I'm eight months pregnant and cancer is causing me a lot of anxiety. The thought of being separated from my baby while moving from one hospital to another is deeply troubling to me."

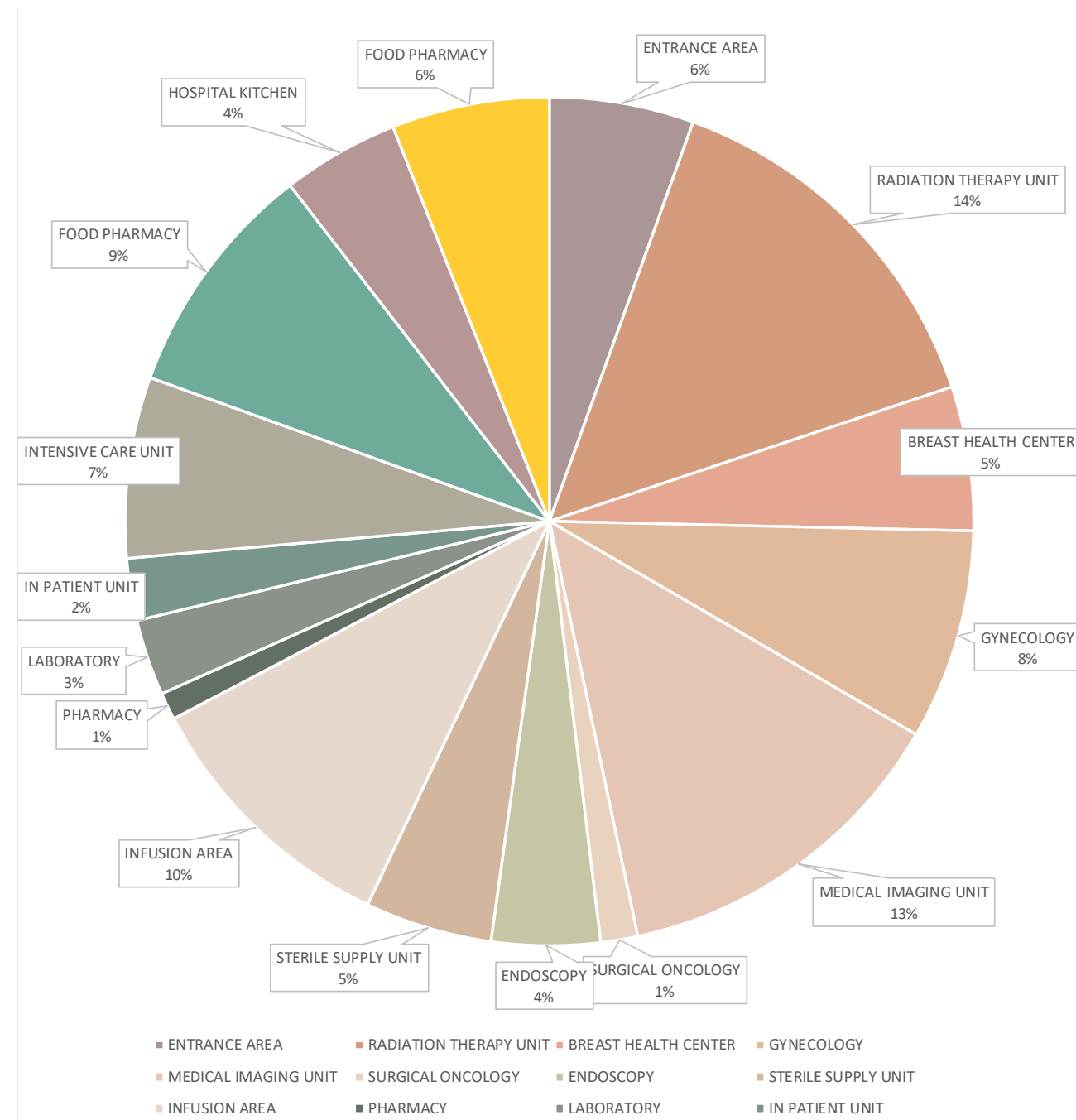


"Time holds significant importance for me, and I find it challenging to maintain a proper work-life balance. Is there a possibility to access expedited medical services to help me save time?"

03. PROGRAMMING

Column1	Column2
1	ENTRANCE AREA 9740
2	RADIATION THERAPY UNIT 25440
3	BREAST HEALTH CENTER 9720
4	GYNECOLOGY 14200
5	MEDICAL IMAGING UNIT 23500
6	SURGICAL ONCOLOGY 2500
7	ENDOSCOPY 7320
8	STERILE SUPPLY UNIT 8580
9	INFUSION AREA 18150
10	PHARMACY 1840
11	LABORATORY 5130
12	IN PATIENT UNIT 4190
13	INTENSIVE CARE UNIT 12200
14	FOOD PHARMACY 16000
15	HOSPITAL KITCHEN 7890

Departmental Net SF	166400
All Departments Gross SF	216320
Factor: Dept. to Bldg.	1.3
Grand totals	281216



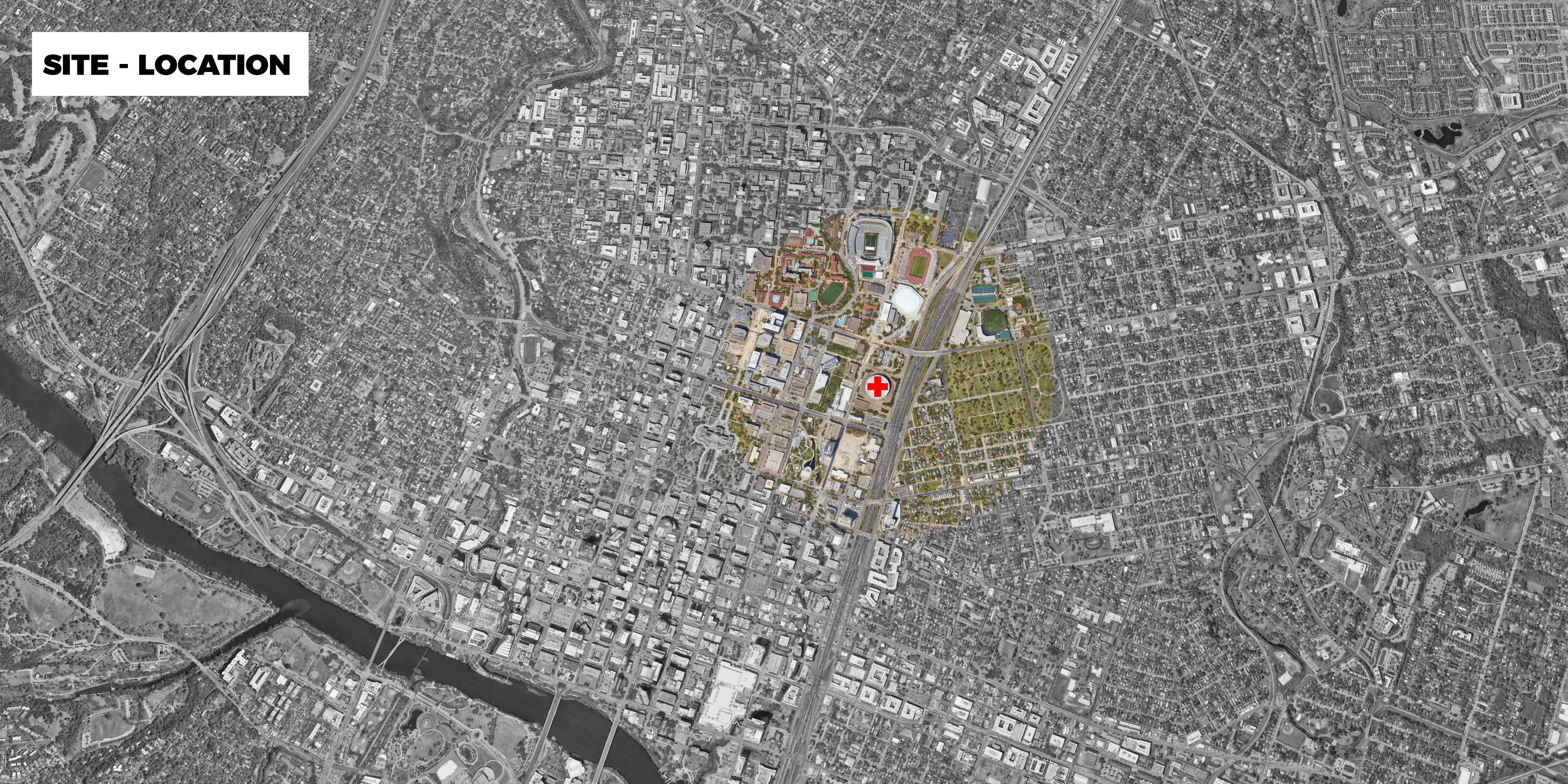
DESIGN PROGRAMMING



Terrace Garden in front of the physiotherapy gym

04.DEVELOPMENT

SITE - LOCATION



CONTEXT



FRANK C. ERWIN, JR. SPECIAL EVENTS CENTER used to be the competition arena for the UT men's and women's basketball programs and also hosts graduations, university events, and numerous concerts and shows. The facility opened in 1977 and has undergone some significant upgrades and renovations. The Frank Erwin Center has a total capacity of 16,540 seats including 28 suites and it is to be demolished as per the UT Austin Medical district master plan. Located just south of the Frank Erwin Center, the Denton A. Cooley Pavilion (Cooley Pavilion) opened in 2003 and serves as a practice facility for the UT men's and women's basketball programs. Each team has its own dedicated practice space consisting of a full-length court and an additional five practice hoops. Also within Cooley Pavilion are men's and women's basketball locker rooms and team lounges, coaches' offices, team film room, basketball strength and conditioning, and sports medicine facilities.



THE TEXAS CAPITOL BUILDING, nestled in the heart of Austin, is more than just the seat of the state's government; it is a cultural landmark that encapsulates the spirit of Texas. Constructed with an eye for grandeur, the building's architecture is an impressive example of Renaissance Revival style, characterized by its symmetrical layout, classical orders, and an expansive dome that crowns the structure. The use of Texas Sunset Red Granite in its construction not only gives the building its distinctive color but also connects it to the state's natural beauty and resources. This architectural gem spans over 22 acres and is surrounded by beautifully maintained grounds that serve as a public park, filled with native trees, plants, and various memorials that honor Texas's heroes and historic events. Inside, the Capitol is equally majestic, with its large rotunda that houses portraits of every person who has served as president of the Republic of Texas or governor of the State of Texas. The chambers of

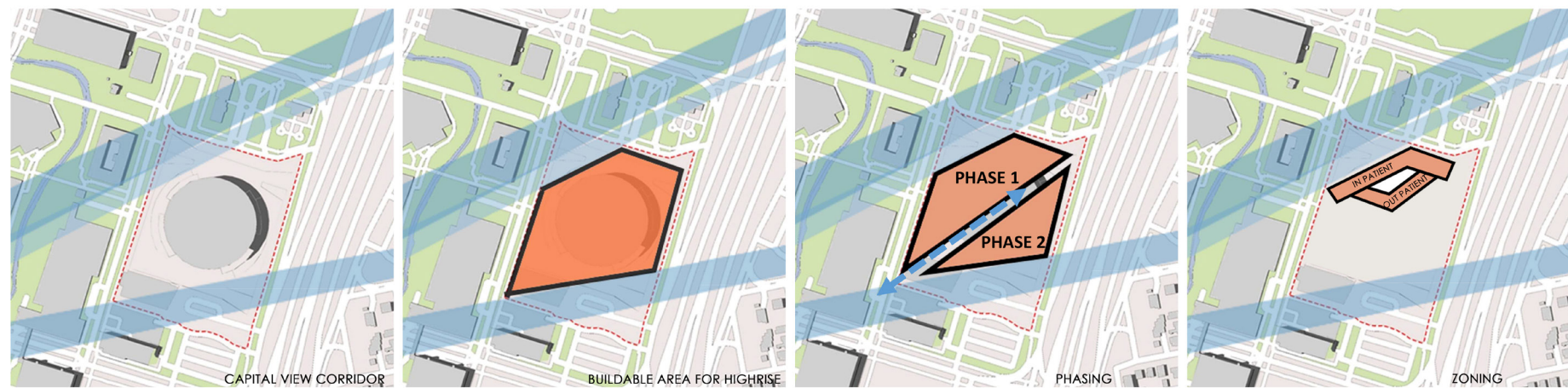
Legislature, along with the governor's office, are adorned with intricate details and historic furnishings. Visitors are often struck by the elaborate use of materials, including marble and wood, which create a sense of timelessness and continuity with the past. The Capitol View Corridors are an innovative urban planning concept that originated in the 1980s. These corridors are essentially invisible lines radiating from the Capitol dome, extending out into the city in various directions. The purpose of these corridors is to maintain clear lines of sight to the Capitol, ensuring that no new buildings or developments obstruct views of this historic edifice. This policy reflects a deep respect for history and a desire to keep the symbolic heart of Texas governance visible amidst the rapid growth and modernization of Austin.



DELL SETON MEDICAL CENTER at The University of Texas Hospital in Austin, Texas, stands as a beacon of medical excellence, providing comprehensive healthcare services to the community. Operating around the clock, this critical care hospital is equipped with a Level I trauma center and a 24/7 emergency room, catering to the most critical injuries and illnesses. As part of the Ascension network, Dell Seton Medical Center is committed to delivering personalized healthcare, emphasizing a compassionate approach that tailors treatments to individual patient needs. The hospital is renowned for its specialized care in heart and vascular health, stroke care, brain and spine conditions, and offers state-of-the-art radiology and neurorehabilitation services. Additionally, it has been recognized with the Gold Plus Level Performance Award by the American Heart Association for its exceptional stroke care. The Birthing Center at Dell Seton offers a bespoke maternity experience, supported by a broad spectrum of minimally invasive procedures, imaging, lab tests, and rehabilitation services. With a focus on excellence in surgery and endoscopy, Dell Seton's team of surgical sub-specialists employs advanced technologies and a collaborative approach to enhance patient recovery and care quality. For minor emergencies, the center also provides the convenience of online ER scheduling, further demonstrating its dedication to accessibility and superior patient care.



DESIGN DEVELOPMENT



THE PROCESS

In the meticulous design development phase of Austin's Women's Cancer Center, our focus was not only on creating a functional and efficient facility but also on crafting a space that fosters healing, connection, and community engagement. Situated strategically near the Mueller community, Dell Medical Center, Texas Capitol State Building, the Moody Center, and Waller Creek Park, our chosen site offers an ideal canvas for our visionary project.

One of the pivotal challenges encountered during the design process was the presence of the capitol view corridor, numbers 23, 24, and 25, passing through the site. This imposed height restrictions ranging from 68 to 72 feet in the designated area. Overcoming this obstacle required careful planning and innovative solutions. Consequently, we identified an optimal location for a high-rise building, ensuring compliance with regulations while accommodating future expansion needs.

The project's connectivity was a key consideration, particularly in fostering collaboration with our partner hospital, Dell Medical Center. To facilitate seamless interaction and mutual support, a connecting corridor was incorporated, establishing a direct link between the two facilities. This not only enhances operational efficiency but also reinforces the symbiotic relationship between healthcare providers dedicated to women's wellness.

Embracing the ethos of community engagement, the design of Austin's Women's Cancer Center revolves around the integration of expansive community spaces. By surrounding the building with these communal areas, we aim to bridge the gap between the center and the surrounding community, fostering dialogue, awareness, and cancer prevention initiatives. It is through these spaces that we envision creating a sense of belonging and shared responsibility in the fight against cancer.

Divided into two distinct phases, the Women's Cancer Center embodies a comprehensive approach to healthcare and research. Phase 1 encompasses the hospital block, designed to provide unparalleled care and support to patients, while Phase 2 focuses on the research block, dedicated to advancing our understanding of cancer and developing innovative treatments. By seamlessly integrating with neighboring facilities, our design promotes synergy and collaboration, ultimately amplifying the impact of our collective efforts in combating cancer.

COMMUNITY AS MEDICINE

In the realm of cancer care, the healing power of community often goes overlooked. Yet, the Women's Cancer Care Center seeks to redefine this narrative, recognizing the profound impact of social support on health outcomes. Our center is not merely a place of treatment; it's a sanctuary where the community serves as medicine. At its core, our approach is rooted in the understanding that community support fosters resilience, reduces stress, and promotes overall well-being. Through collaboration with local organizations, leaders, and residents, we aim to cultivate a network of resources that empowers women facing cancer. Community garden spaces, exercise areas, and gathering spots within the center are designed not just for physical activity, but as avenues for connection and camaraderie. These spaces serve as catalysts for healthier lifestyles and foster a sense of belonging among patients, caregivers, and staff. Central to our design are activity hubs strategically placed within departments like chemotherapy and in-patient units. Here, patients find more than just treatment—they find peer support and shared experiences that expedite their recovery journey. Through workshops, support groups, and collaborative events, we aim to engage the broader community in our mission. By leveraging local expertise and resources, we create a supportive ecosystem that addresses the diverse needs of women affected by cancer. In our vision, the Women's Cancer Care Center is a beacon of hope, resilience, and empowerment. By embracing community as a cornerstone of care, we not only improve health outcomes but also create a legacy of solidarity and strength. Together, we build a future where no woman faces cancer alone.



FOOD AS MEDICINE

In the heart of our Women's Cancer Care Center lies a revolutionary concept: food as medicine. Here, the air is filled with the aroma of freshly harvested produce, and the vibrant colors of fruits and vegetables paint a picture of health and vitality. Our commitment to holistic healing begins with the understanding that nutrition is not just about sustenance but a powerful tool for wellness. At the core of our center, a cutting-edge food pharmacy stands as a testament to innovation. Utilizing aeroponics technology, this pharmacy nurtures a bounty of nutrient-rich crops, offering a constant supply of fresh ingredients for healing meals. Patients and community members alike are invited to partake in this abundance, hand-picking the fruits of their labor and crafting their own nourishing dishes. Beyond the pharmacy, open dining areas beckon with their inviting ambiance. Here, amidst the chatter of shared stories and laughter, individuals come together to engage in the age-old ritual of breaking bread. Yet, this is no ordinary dining experience. Here, guests are encouraged to roll up their sleeves and immerse themselves in the art of food preparation. From harvesting their own crops to assembling personalized salad bowls and blending wholesome smoothies, every step is a celebration of health and empowerment. But our commitment extends far beyond mere sustenance. Through educational workshops and personalized nutritional counseling, we empower women to forge a deeper connection with their food and make informed choices that support their well-being. In this space, the boundaries between patient and participant blur, as we foster a sense of community where everyone is valued and empowered to take charge of their health journey.

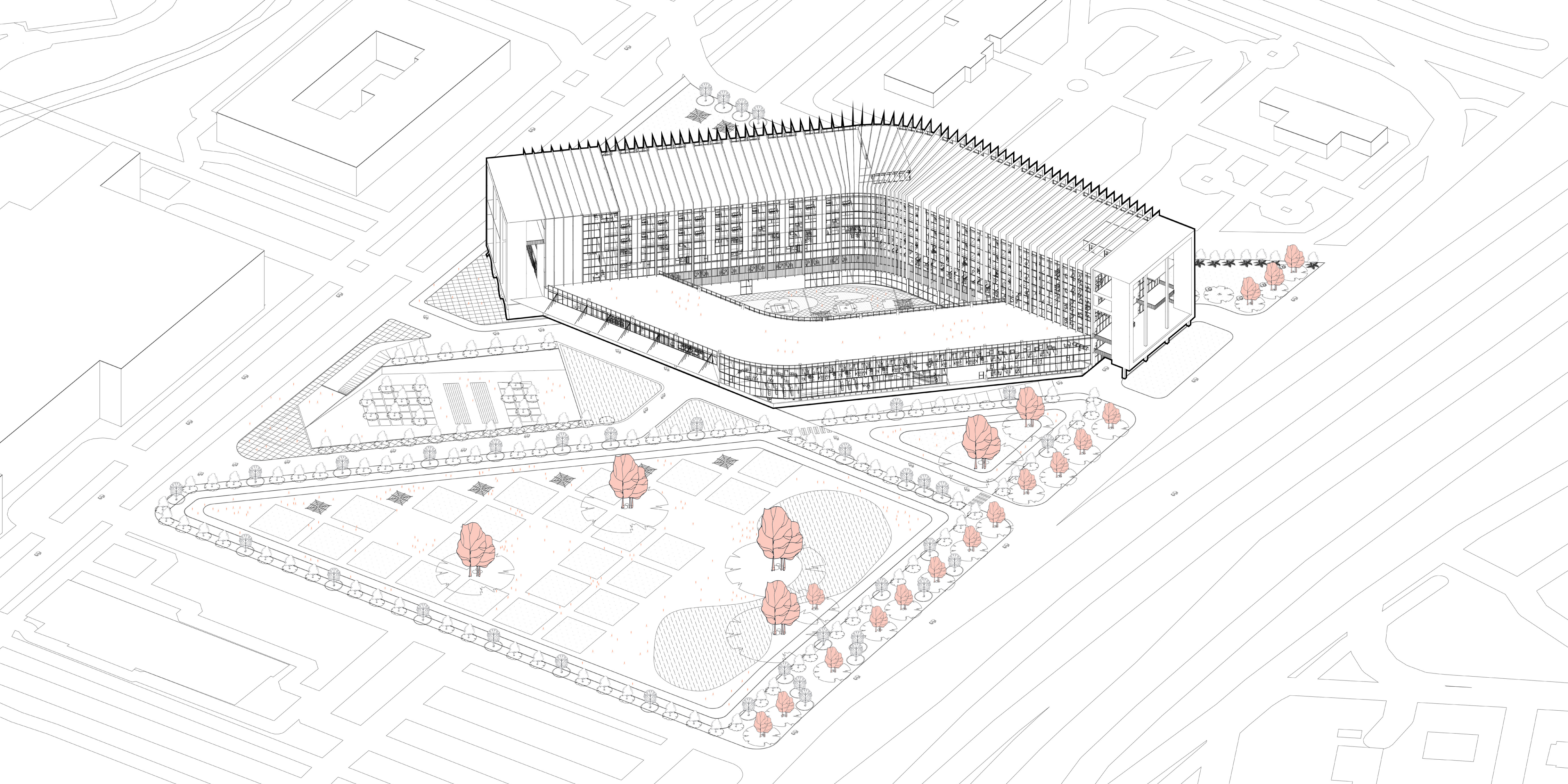


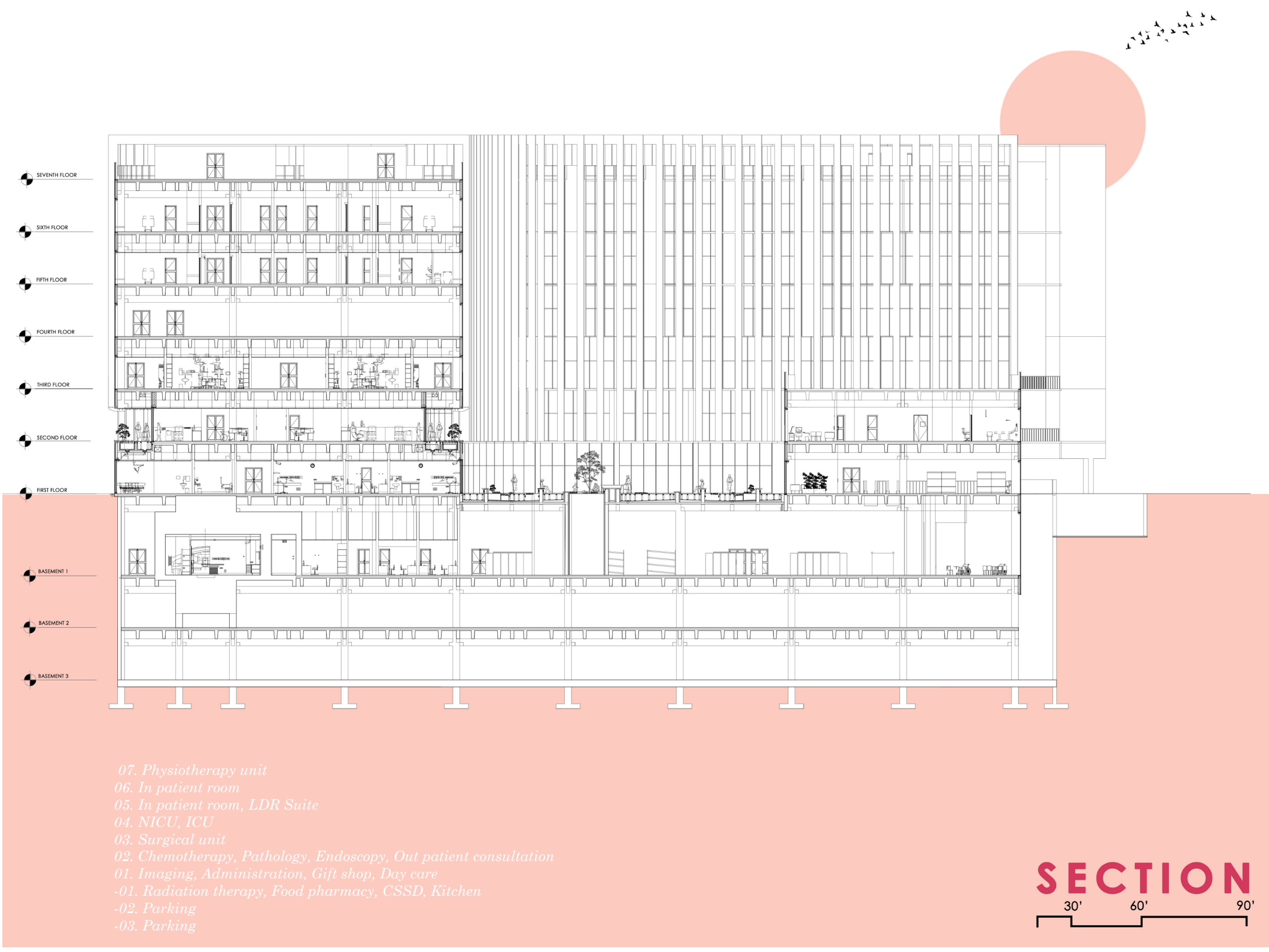
MOVEMENT AS MEDICINE

Physical activity plays a pivotal role in fostering optimal health and well-being (1), by integrating elements of flexible design, nature integration, and innovative technology, our center will provide a nurturing environment conducive to various forms of movement, from yoga and dance therapy to guided exercises and outdoor activities. Activity hubs nestled within departments such as chemotherapy and in-patient units will serve as focal points, encouraging patients to engage in physical activities with their peers. Outdoor terrace gardens will offer patients the opportunity to connect with nature, promoting walking and other physical movements. Seating spaces interspersed along walking trails will not only provide resting areas but also act as targets, encouraging patients to walk further. Through these thoughtful design interventions, our center aims to create a supportive environment that empowers women to take an active role in their healing journey. By addressing the physical, emotional, and psychological aspects of wellness, our center endeavors to redefine the standard of cancer care by placing movement at the forefront of the healing process. Additionally, our center will offer resources for exercise programs and fitness education, providing women with the knowledge and tools to incorporate movement into their daily lives. Moreover, by collaborating with health-care professionals, nutritionists, and mental health specialists, we will ensure a comprehensive approach to wellness that supports women in managing the challenges associated with cancer treatment and survivorship.



04. PROPOSAL





Louise Cafe stands as a vibrant hub within our culinary sanctuary, inviting all to partake in the joy of crafting their own nourishment. Here, we orchestrate an immersive journey where patrons can delight in hand-selecting their preferred herbs and berries from our flourishing hydroponic pods, fostering a sense of connection with their food. Whether fashioning a personalized salad bowl or blending a refreshing smoothie, the possibilities for culinary exploration are endless.

Beyond mere sustenance, Louise Cafe thrives as a dynamic space for camaraderie and collaboration. Gather with colleagues amidst the verdant ambiance, engaging in lively conversations as you assemble your lunchtime creations together. This communal experience not only nourishes the body but also cultivates stronger bonds among peers, fostering a culture of shared well-being.

Central to our ethos is the promotion of a healthy lifestyle and harmonious community relations. By empowering individuals to actively participate in the preparation of their meals, we champion the values of mindful eating and holistic wellness. Moreover, our self-check-in counters streamline the billing process, eliminating the need for additional staff and enhancing the efficiency of our establishment.

In essence, Louise Cafe transcends the conventional dining experience, serving as a sanctuary where food becomes a celebration of self-expression, togetherness, and vitality.



Louise cafe - self check in and food preparation area

**NOURISH
TO FLOURISH:
YOUR PLATE
AGAINST
CANCER**





BASEMENT FLOOR PLAN



Louise cafe - self check in and food preparation area



Food pharmacy lobby area



The seating area overlooking our lush planting zone is more than just a place to sit; it's a sanctuary for connection and discovery. Here, families and friends gather to pause, converse, and observe the wonders of our food pharmacy. As adults unwind with their favorite smoothies, children marvel at the sight of herbs and berries being harvested, sparking their curiosity about where their food comes from. This harmonious blend of relaxation and education fosters deeper bonds among loved ones and a greater appreciation for nature's bounty. In this tranquil space, moments of togetherness and exploration intertwine, creating cherished memories and enriching our lives.





Hallway next to the food pharmacy



Louise cafe - self check in and food preparation area

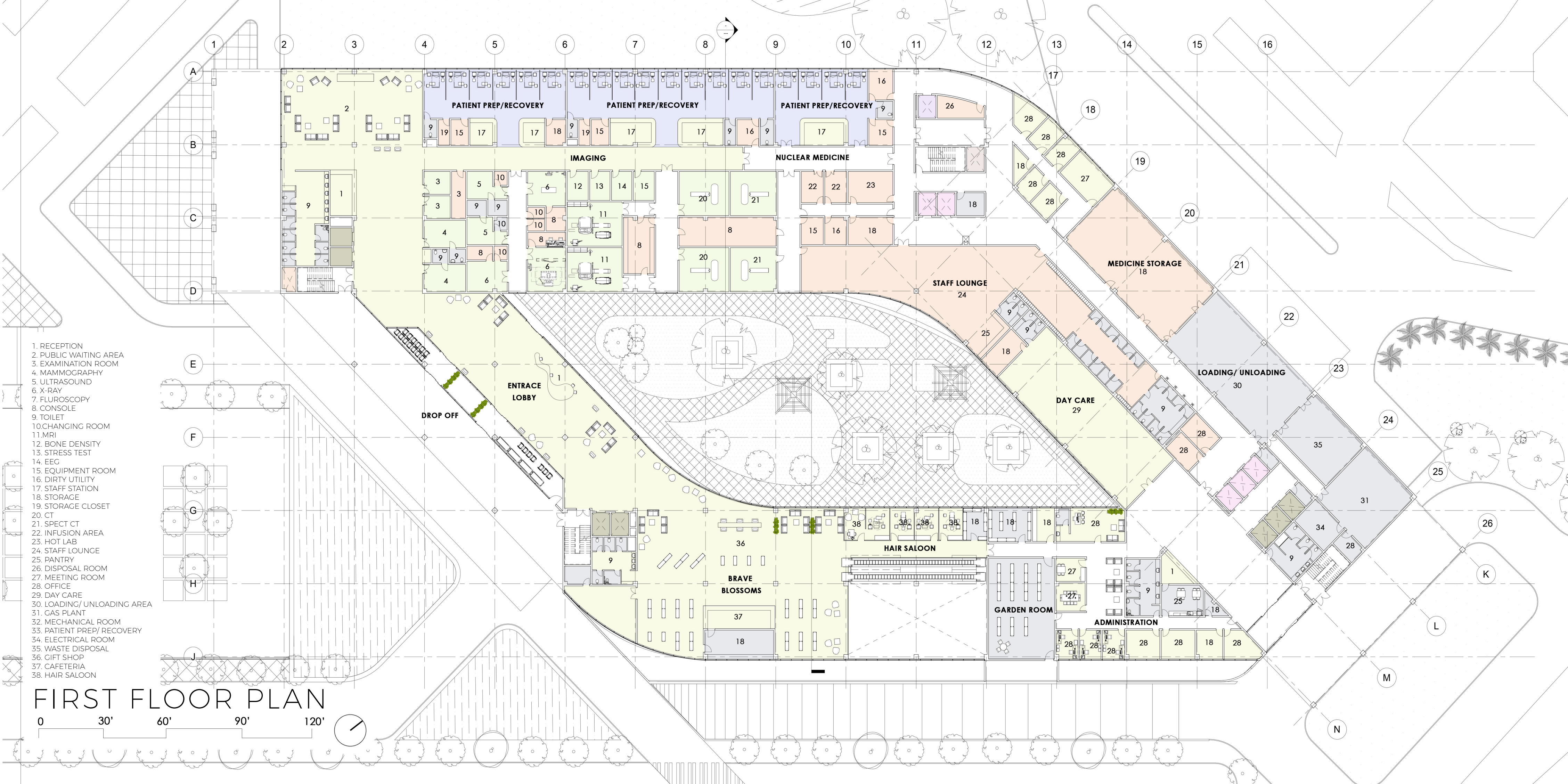


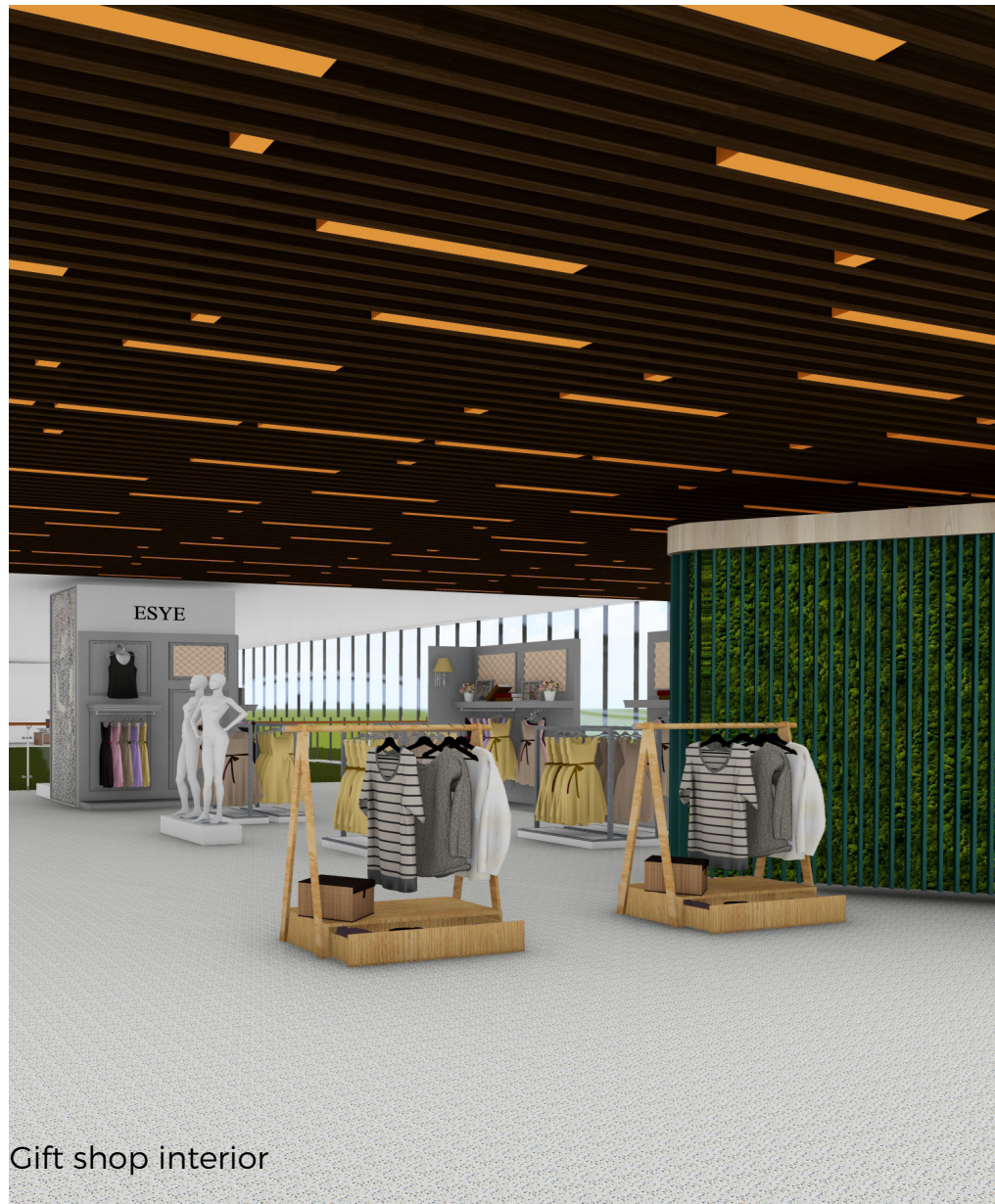
Main entrance lobby

- 1. RECEPTION
- 2. PUBLIC WAITING AREA
- 3. EXAMINATION ROOM
- 4. MAMMOGRAPHY
- 5. ULTRASOUND
- 6. X-RAY
- 7. FLUROSCOPY
- 8. CONSOLE
- 9. TOILET
- 10.CHANGING ROOM
- 11.MRI
- 12. BONE DENSITY
- 13. STRESS TEST
- 14. EEG
- 15. EQUIPMENT ROOM
- 16. DIRTY UTILITY
- 17. STAFF STATION
- 18. STORAGE
- 19. STORAGE CLOSET
- 20. CT
- 21. SPECT CT
- 22. INFUSION AREA
- 23. HOT LAB
- 24. STAFF LOUNGE
- 25. PANTRY
- 26. DISPOSAL ROOM
- 27. MEETING ROOM
- 28. OFFICE
- 29. DAY CARE
- 30. LOADING/ UNLOADING AREA
- 31. GAS PLANT
- 32. MECHANICAL ROOM
- 33. PATIENT PREP/ RECOVERY
- 34. ELECTRICAL ROOM
- 35. WASTE DISPOSAL
- 36. GIFT SHOP
- 37. CAFETERIA
- 38. HAIR SALOON

FIRST FLOOR PLAN

0 30' 60' 90' 120'





Gift shop interior



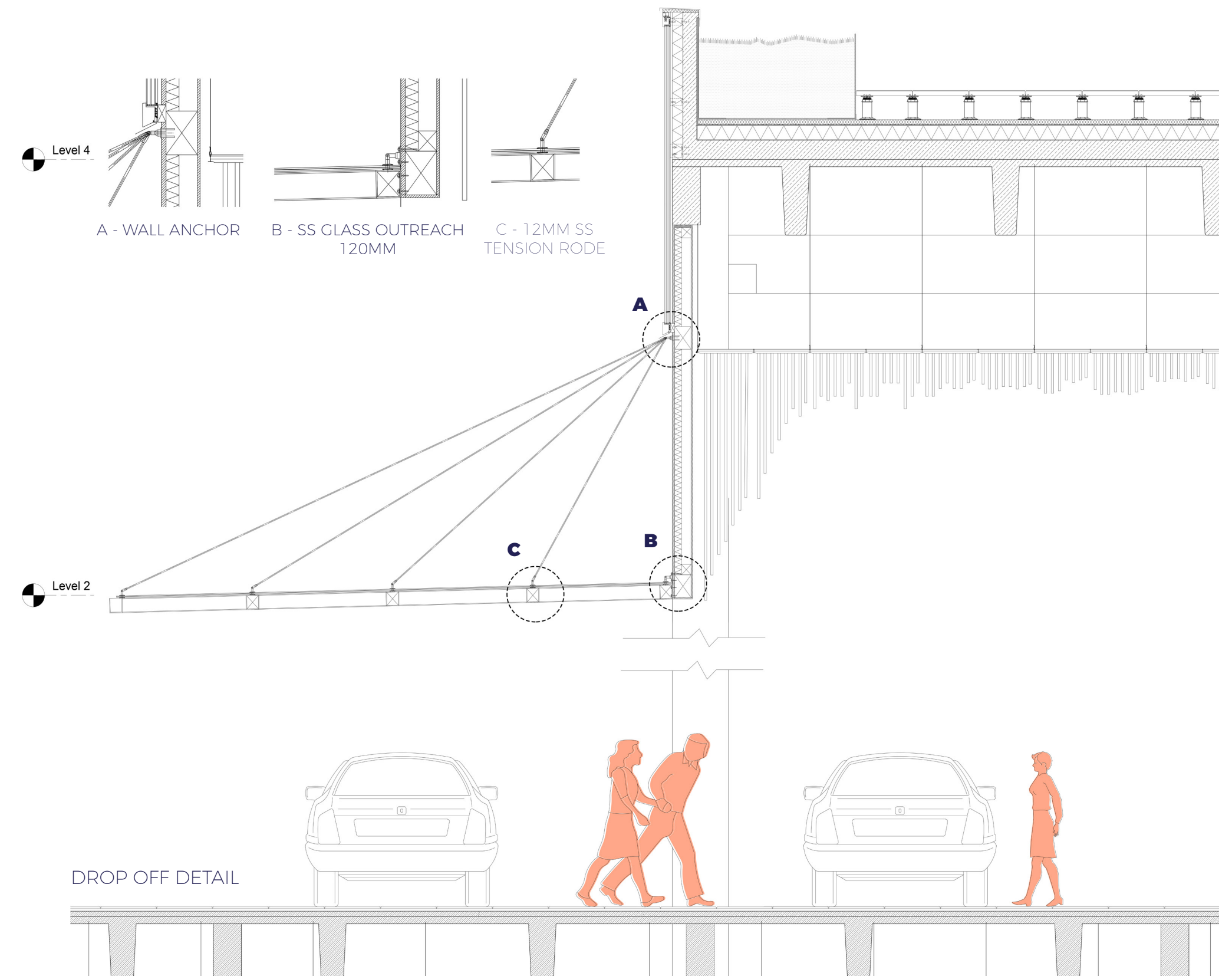
Cafeteria

Brave Blossom is designed to enhance the retail experience for both patients undergoing treatment and their families. It transforms a routine shopping trip into an opportunity for relaxation and enjoyment amidst challenging times. At Brave Blossom, visitors can find a carefully curated selection of apparel, including favorite dresses perfect for gifting to loved ones. The shop also offers a beautiful assortment of floral arrangements, from vibrant bouquets to soothing green plants, all designed to brighten a patient's room or lift spirits.

More than just a retail space, Brave Blossom is a sanctuary. It boasts a café that overlooks a meticulously maintained courtyard filled with lush greenery, providing a tranquil space where guests can have a cup of coffee and enjoy a moment of peace away from clinical settings. This area serves as a breath of fresh air, allowing patients and families to unwind and gather strength in a serene environment.

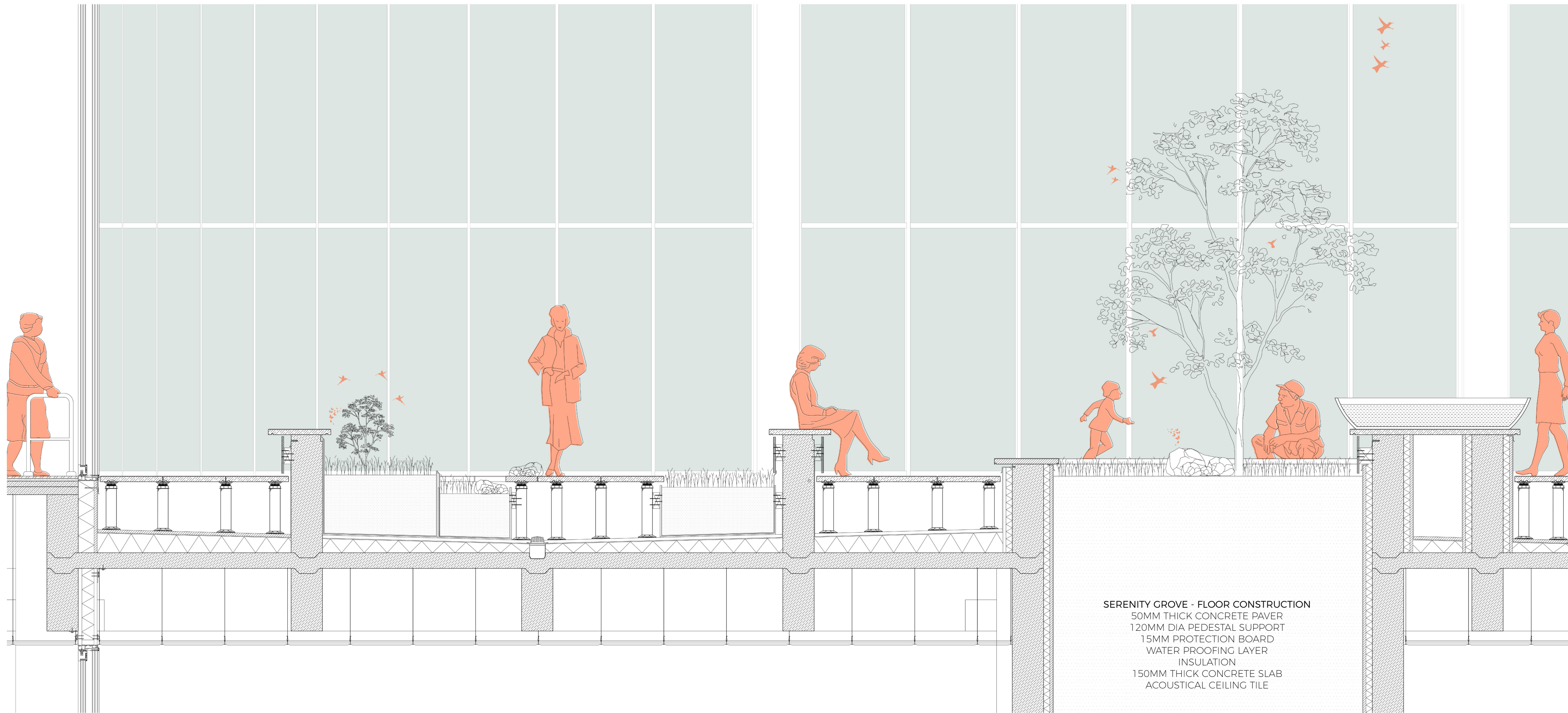
Understanding the particular challenges faced by its clientele, Brave Blossom also includes a hair salon specializing in services for those who experience hair loss due to medical treatments. The salon offers wig fittings and styling services in a compassionate and private setting, helping patients maintain their dignity and self-esteem during a difficult journey.

Each aspect of Brave Blossom is thoughtfully designed to provide comfort and convenience to those it serves, making it more than just a place to shop but a vital part of the healing and coping process for many families.



“Serenity Grove” revolutionizes the healing journey for patients within the cancer center by introducing a therapeutic healing garden that seamlessly integrates principles of biophilia. This transformative project aims to cultivate a holistic environment that nurtures the mind, body, and spirit (1). Acting as a haven for patients, the central courtyard serves as the lung of the cancer center, visible from all areas within the hospital, offering a tranquil escape from the clinical environment (2). Through careful design, the garden incorporates elements that captivate the senses, diverting attention from treatment challenges and fostering a positive distraction (3). Moreover, the layout of Serenity Grove encourages active movement, with pathways and open spaces designed to facilitate gentle strolls, yoga, and meditation, recognizing physical activity as integral to the healing process (4). Additionally, the garden fosters social interaction, providing seating areas, group activities, and shared spaces that promote connections among patients, families, and healthcare providers (5). By engaging all senses, including soothing water features, vibrant colors, fragrant flowers, and textured surfaces, Serenity Grove creates a multisensory environment that contributes to a holistic healing experience (6). Incorporating seven key elements of biophilia, such as natural light, vegetation, water features, and biodiversity, the garden resonates with the innate human connection to nature, further promoting healing and well-being (6). Ultimately, by serving as a visible and accessible lung of the cancer center, Serenity Grove becomes an integral part of the healing journey for patients, enhancing the therapeutic atmosphere of the healthcare facility and offering solace and strength in nature’s embrace (5).





SERENITY GROVE - FLOOR CONSTRUCTION

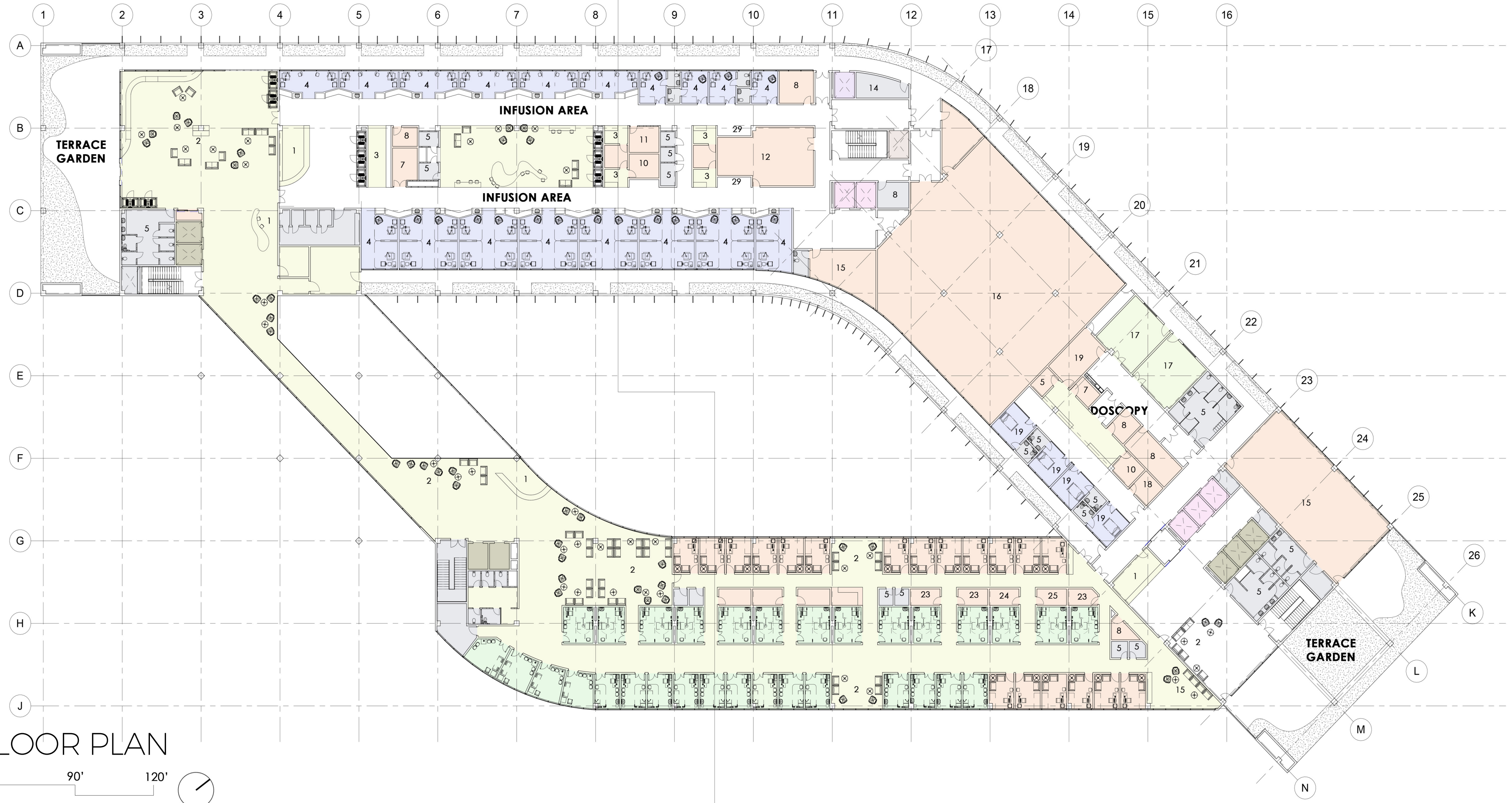
- 50MM THICK CONCRETE PAVER
- 120MM DIA PEDESTAL SUPPORT
- 15MM PROTECTION BOARD
- WATER PROOFING LAYER
- INSULATION
- 150MM THICK CONCRETE SLAB
- ACOUSTICAL CEILING TILE

CONNECTING COMMUNITIES, CULTIVATING HEALTH





Activity Area inside the Infusion area



- 1. RECEPTION
- 2. PUBLIC WAITING AREA
- 3. STAFF STATION
- 4. INFUSION BAY
- 5. TOILET
- 6. DIRTY UTILITY
- 7. LINEN STORE
- 8. STORAGE
- 9. MEDICINE STORE
- 10. NOURISHMENT ROOM
- 11. MEDICATION ROOM
- 12. DRUG MIXING
- 13. EQUIPMENT STORE
- 14. DISPOSAL ROOM
- 15. STAFF LOUNGE
- 16. PATHOLOGY
- 17. ENDOSCOPY PROCEDURE
- 18. CHANGING ROOM
- 19. SCOPE WASH
- 20. CONSULTATION ROOM
- 21. DOCTOR'S OFFICE
- 22. LINEN STORE
- 23. LINEN STORE
- 24. MEDICINE STORE
- 25. RECORD ROOM
- 26. MECHANICAL ROOM
- 27. LACTATION ROOM
- 28. MEDITATION ROOM
- 29. ROBOT DOCKING STATION

SECOND FLOOR PLAN





Activity Area inside the Infusion area



View to the out-door patio from infusion bay

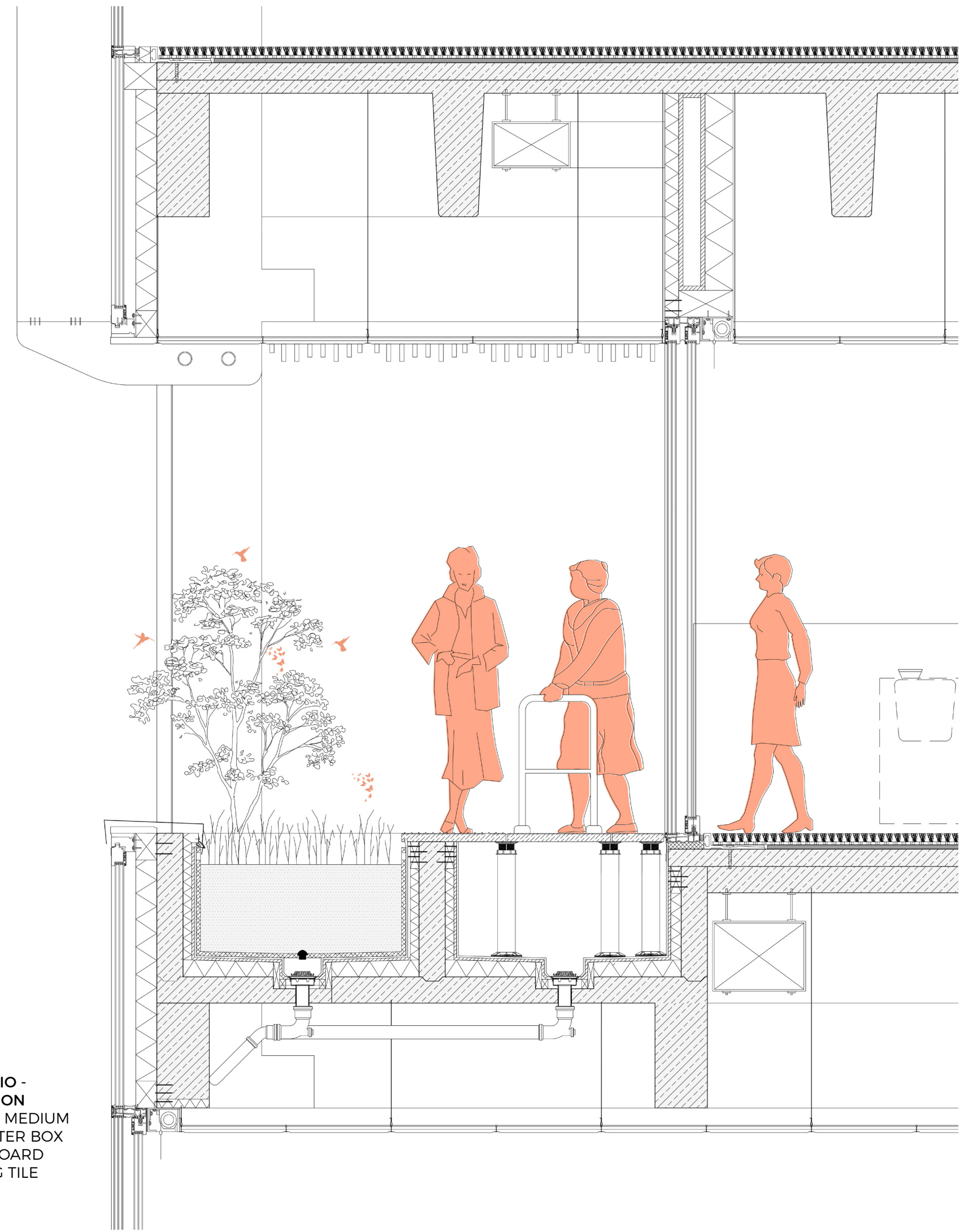
“Healing Haven - the chemotherapy unit” represents a transformative architectural endeavor aimed at reshaping the cancer treatment experience through the integration of supportive design theory, drawing inspiration particularly from the seminal work of Roger Ulrich. This innovative idea is devoted to cultivating a nurturing and empowering environment for cancer patients undergoing infusion therapy, placing a significant emphasis on their comfort and well-being throughout the treatment process. At its core, the design philosophy revolves around three fundamental principles derived from Ulrich’s supportive design theory: Sense of Control, Positive Distraction, and Social Support. Through meticulous attention to detail, the infusion area is carefully crafted to empower patients with a sense of control over their treatment environment, offering a variety of infusion bays tailored to individual preferences including private infusion rooms, semipublic and public infusion bays, thereby enhancing the treatment experience and fostering a feeling of autonomy. Furthermore, Healing Haven incorporates the principle of positive distraction to alleviate the stress associated with cancer treatment. By opening to a serene green corridor, patients are provided with extended exterior views and a connection to nature, creating a therapeutic environment that promotes relaxation and well-being during the treatment process. Recognizing the importance of social support in the healing journey, Healing Haven also dedicates space within the patient bays as an activity hub for peer groups. This thoughtful inclusion not only facilitates a faster recovery but also fosters a supportive network for patients, encouraging peer group interaction and opportunities for shared experiences and strength-building.



Activity Area inside the Infusion area



Outdoor patio space

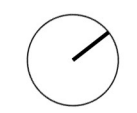
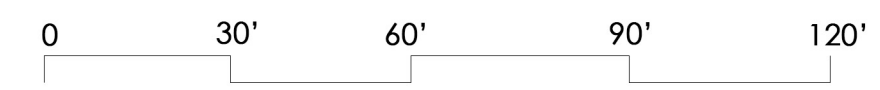


**INFUSION AREA PATIO -
FLOOR CONSTRUCTION**
- 600 MM THICK GROWING MEDIUM
- 50MM THICK GRP PLANTER BOX
- 15MM PROTECTION BOARD
- ACOUSTICAL CEILING TILE



- 1. RECEPTION
- 2. EQUIPMENT STORE
- 3. STAFF LOUNGE
- 4. TOILET
- 5. LINEN STORAGE
- 6. STERILE CORE
- 7. OR
- 8. DIRTY HOLD
- 9. DIRTY UTILITY
- 10. DECONTAMINATION
- 11. CHANGING ROOM
- 12. DISPOSAL ROOM
- 13. STAFF STATION
- 14. SOILED STORE
- 15. RECORD ROOM
- 16. STERILE STORE
- 17. MEDICATION ROOM
- 18. STRETCHER STORAGE
- 19. STAFF BREAK ROOM
- 20. STORAGE
- 21. STRETCHER STORAGE

THIRD FLOOR PLAN

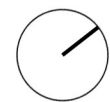


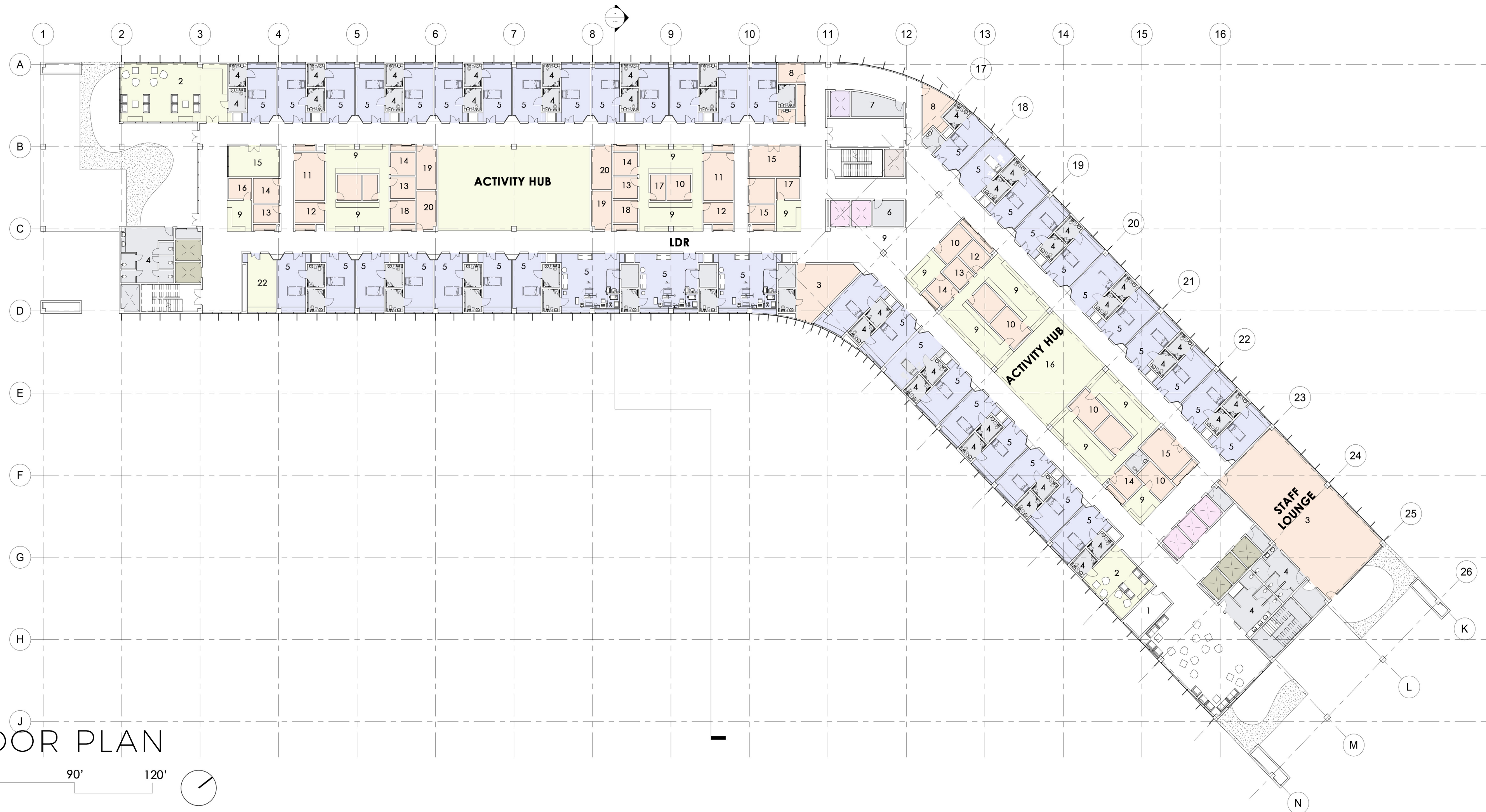


- 1. RECEPTION
- 2. PUBLIC WAITING
- 3. STAFF LOUNGE
- 4. TOILET
- 5. PATIENT ROOM
- 6. MECHANICAL ROOM
- 7. DISPOSAL ROOM
- 8. DIRTY UTILITY
- 9. STAFF STATION
- 10. NOURISHMENT ROOM
- 11. MEDICATION ROOM
- 12. MEDICINE STORE
- 13. LINEN STORE
- 14. CLEAN STORE
- 15. MULTI PURPOSE ROOM
- 16. FAMILY AREA
- 17. STORAGE
- 18. RECORD ROOM
- 19. EQUIPMENT ROOM
- 20. STORAGE
- 21. NICU
- 22. MEDITATION ROOM
- 23. ELECTRICAL ROOM
- 24. PHYSIOTHERAPY ROOM

FOURTH FLOOR PLAN

0 30' 60' 90' 120'





- 1. RECEPTION
- 2. PUBLIC WAITING
- 3. STAFF LOUNGE
- 4. TOILET
- 5. PATIENT ROOM
- 6. MECHANICAL ROOM
- 7. DISPOSAL ROOM
- 8. DIRTY UTILITY
- 9. STAFF STATION
- 10. NOURISHMENT ROOM
- 11. MEDICATION ROOM
- 12. MEDICINE STORE
- 13. LINEN STORE
- 14. CLEAN STORE
- 15. MULTI PURPOSE ROOM
- 16. FAMILY AREA
- 17. STORAGE
- 18. RECORD ROOM
- 19. EQUIPMENT ROOM
- 20. STORAGE
- 21. NICU
- 22. MEDITATION ROOM
- 23. ELECTRICAL ROOM
- 24. PHYSIOTHERAPY ROOM

FIFTH FLOOR PLAN





Terrace garden in the waiting area



View from waiting area to the out door terrace garden

Through a harmonious blend of greenery and architectural ingenuity, this multi-level terrace garden redefines the building's facade, transcending its physical form to become a sanctuary for healing and renewal.

Introducing a unique feature of sculpted projections and depressions on the building facade, "Verdant Heights" orchestrates a three-dimensional interplay that captivates the eye and enhances architectural aesthetics. The lush greenery serves as a vibrant backdrop, transforming the Women's Cancer Center into a distinctive landmark that captures attention and ignites imagination.

Within this living masterpiece, the terrace garden becomes a visual oasis, offering a respite from the urban environment and providing a positive distraction that promotes calm and well-being (1). Patients find solace amidst the verdant landscape, fostering a sense of peace and serenity amid their journey towards healing.

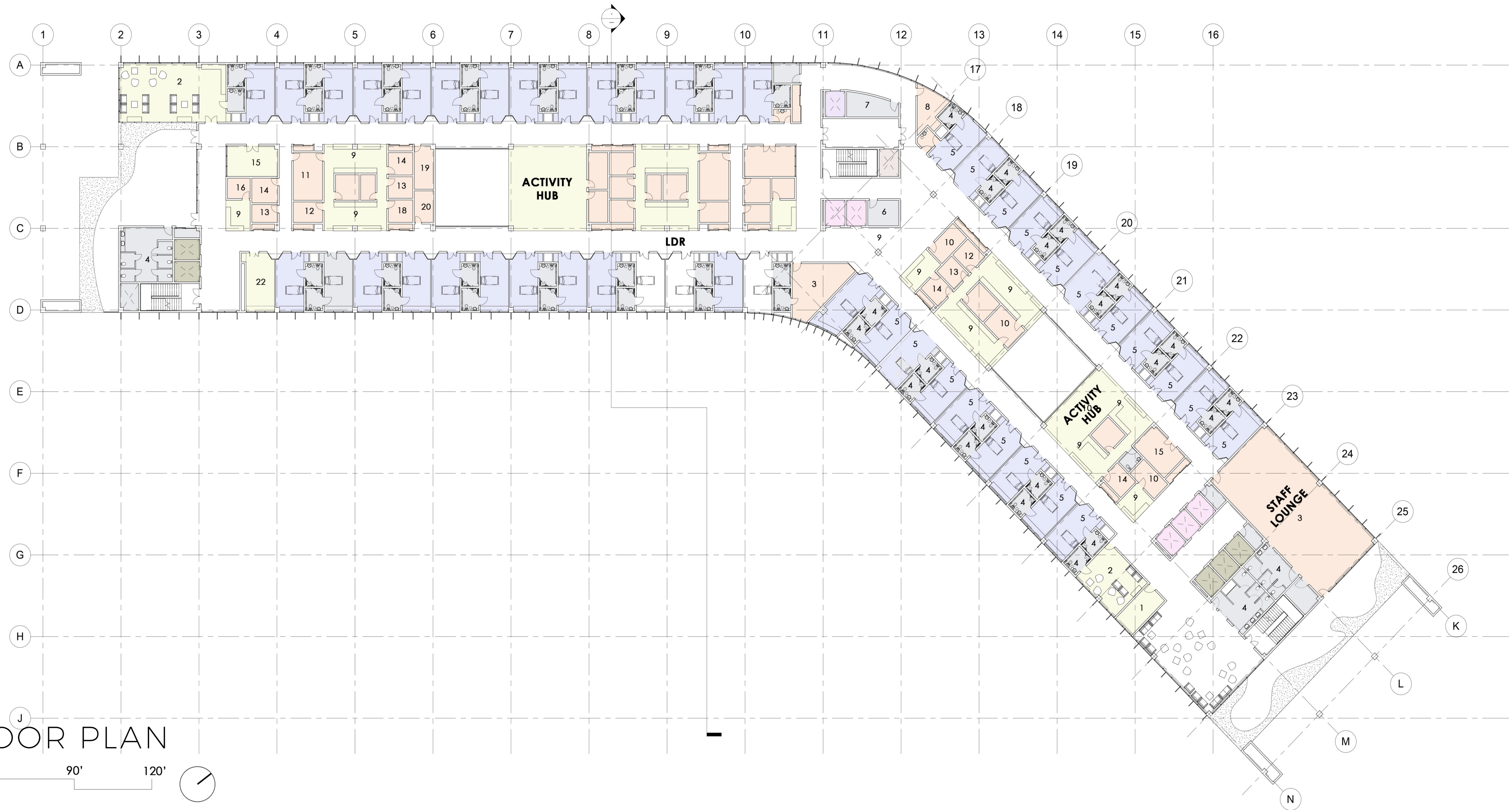
Moreover, "Verdant Heights" encourages dynamic movement through interconnected pathways across different levels, inviting patients to engage in leisurely walks or moments of quiet reflection. By seamlessly integrating movement into the design, the terrace garden promotes an active lifestyle, further enhancing physical and mental well-being.

As a social nexus, "Verdant Heights" creates designated spaces for communal activities, from group yoga sessions to shared seating areas (2). Here, patients, families, and healthcare providers come together, fostering connections and support networks that play a vital role in the healing process (3).

Engaging all the senses, the terrace garden offers a sensory symphony that enriches the healing experience. Fragrant flowers, rustling leaves, and varied textures of plants create a multi sensory environment that immerses patients in a holistic and therapeutic experience (4).



Activity Hub

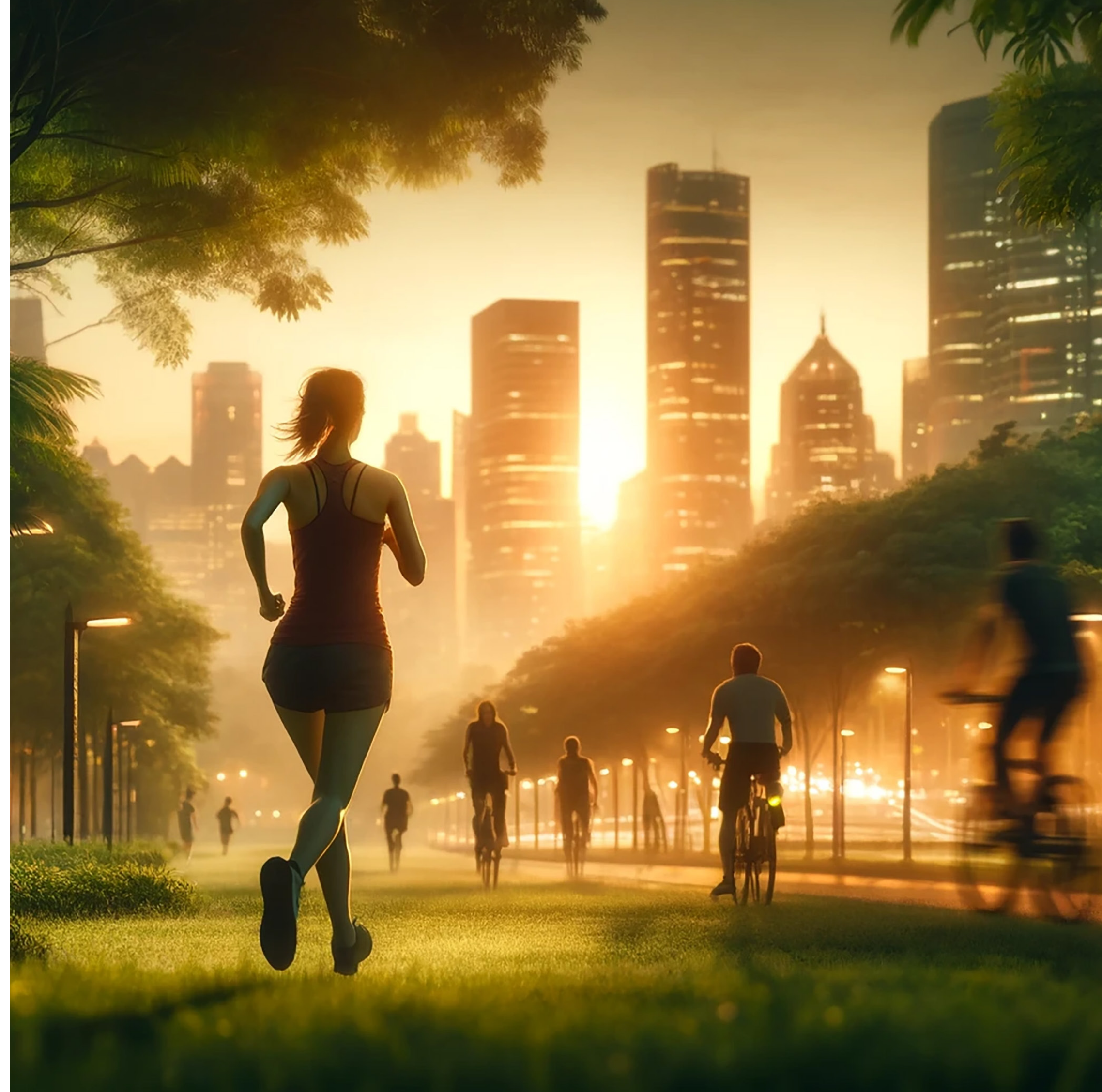


- 1. RECEPTION
- 2. PUBLIC WAITING
- 3. STAFF LOUNGE
- 4. TOILET
- 5. PATIENT ROOM
- 6. MECHANICAL ROOM
- 7. DISPOSAL ROOM
- 8. DIRTY UTILITY
- 9. STAFF STATION
- 10. NOURISHMENT ROOM
- 11. MEDICATION ROOM
- 12. MEDICINE STORE
- 13. LINEN STORE
- 14. CLEAN STORE
- 15. MULTI PURPOSE ROOM
- 16. FAMILY AREA
- 17. STORAGE
- 18. RECORD ROOM
- 19. EQUIPMENT ROOM
- 20. STORAGE
- 21. NICU
- 22. MEDITATION ROOM
- 23. ELECTRICAL ROOM
- 24. PHYSIOTHERAPY ROOM

SIXTH FLOOR PLAN



**MOVE WELL,
LIVE BETTER:
YOUR GUIDE
TO VIBRANT
HEALTH**





Physiotherapy area



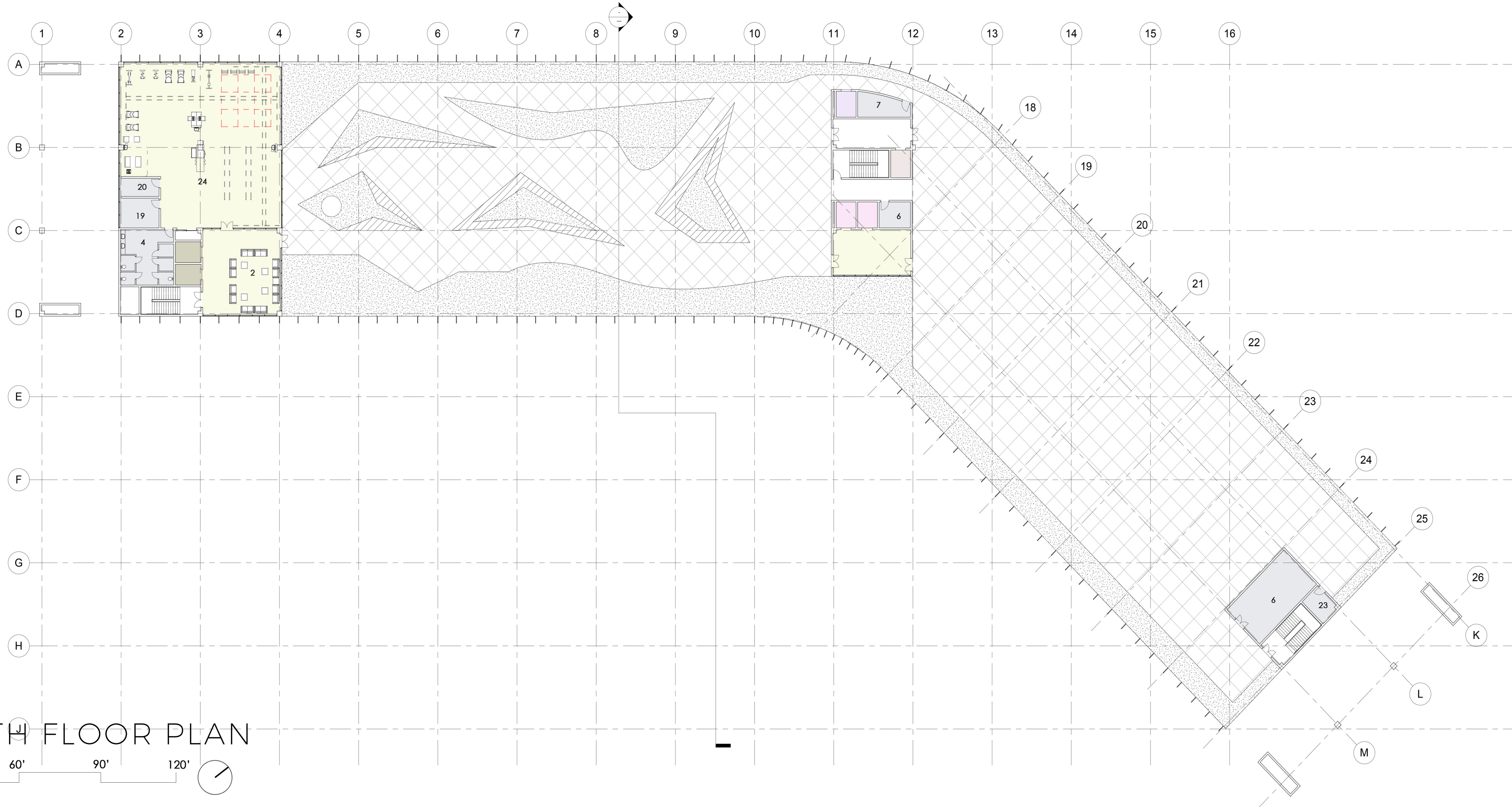
Physiotherapy area

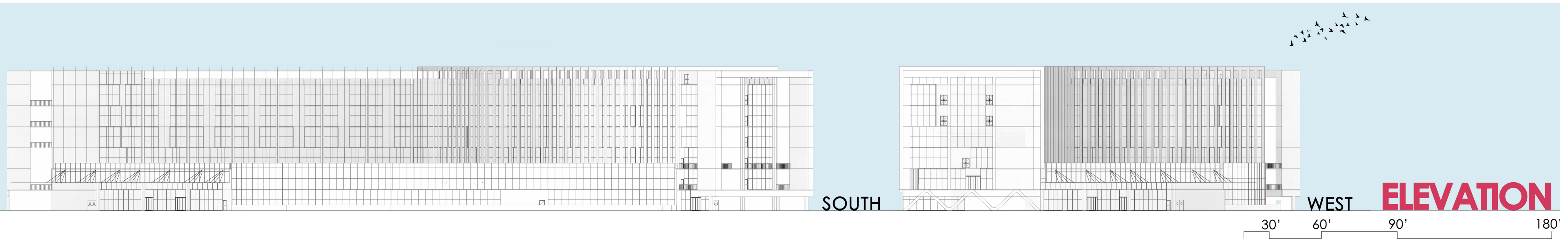
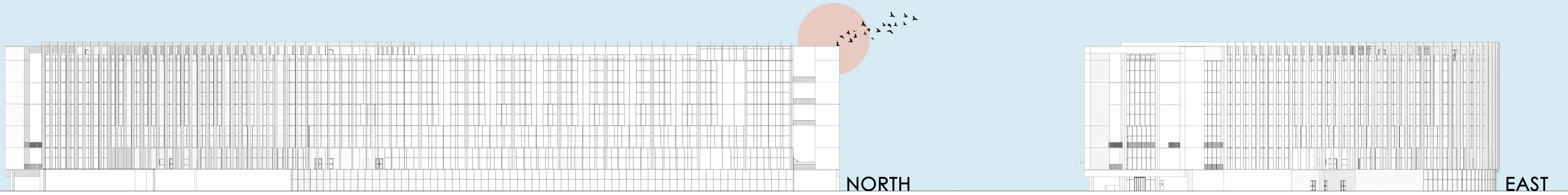


Terrace Garden

- 1. RECEPTION
- 2. PUBLIC WAITING
- 3. STAFF LOUNGE
- 4. TOILET
- 5. PATIENT ROOM
- 6. MECHANICAL ROOM
- 7. DISPOSAL ROOM
- 8. DIRTY UTILITY
- 9. STAFF STATION
- 10. NOURISHMENT ROOM
- 11. MEDICATION ROOM
- 12. MEDICINE STORE
- 13. LINEN STORE
- 14. CLEAN STORE
- 15. MULTI PURPOSE ROOM
- 16. FAMILY AREA
- 17. STORAGE
- 18. RECORD ROOM
- 19. EQUIPMENT ROOM
- 20. STORAGE
- 21. NICU
- 22. MEDITATION ROOM
- 23. ELECTRICAL ROOM
- 24. PHYSIOTHERAPY ROOM

SEVENTH FLOOR PLAN







View from the community garden area

CONCLUSION

The Women's Cancer Center is poised to become a sanctuary of hope and empowerment for women facing the challenges of cancer. Embracing the latest in evidence-based design, the center will incorporate cutting-edge technology and adhere to sustainable practices to foster a restorative and supportive atmosphere. It will offer a holistic approach to care, including state-of-the-art treatment options, comprehensive support services, and extensive educational resources. This environment will not only aid in healing but also empower women to manage their health with confidence, fostering both physical and emotional strength. The center aims to cultivate a community where women can gain resilience through shared experiences and unwavering support, ensuring no one navigates their cancer journey alone.

RESOURCES

1. World Health Organization. (2020). *Global action plan on physical activity 2018–2030: More active people for a healthier world*. World Health Organization.
2. O'Mara-Eves, A., Brunton, G., Oliver, S., Kavanagh, J., Jamal, F., & Thomas, J. (2015). The effectiveness of community engagement in public health interventions for disadvantaged groups: A meta-analysis. *BMC Public Health, 15*, Article 129.
3. Markle, E. (2019). *Community as medicine: Re-designing healthcare*. Design Museum Everywhere.
4. Wang, D. D., Leung, C. W., Li, Y., Ding, E. L., Chiuve, S. E., Hu, F. B., & Willett, W. C. (2014). Trends in dietary quality among adults in the United States, 1999 through 2010. *JAMA Internal Medicine, 174*(10), 1587-1595.
5. Ulrich, R. S., Simons, R. F., Losito, B. D., Fiorito, E., Miles, M. A., & Zelson, M. (2008). Stress recovery during exposure to natural and urban environments. *Journal of Environmental Psychology, 11*(3), 201-230.
6. Hartig, T., Mitchell, R., de Vries, S., & Frumkin, H. (2014). Nature and health. *Annual Review of Public Health, 35*, 207-228.
7. Cooper Marcus, C., & Barnes, M. (1995). Gardens in healthcare facilities: Uses, therapeutic benefits, and design recommendations. Retrieved from <https://www.healthdesign.org/system/files/GardensinHealthcareFacilities.pdf>
8. Nanda, U., & Eisen, S. (2016). Balancing acts: Designing health environments for mindfulness and mobility. *HERD: Health Environments Research & Design Journal, 9*(4), 119-132.
9. Kaplan, R., & Kaplan, S. (1989). *The experience of nature: A psychological perspective*. Cambridge University Press.
10. Kellert, S. R., Heerwagen, J., & Mador, M. (Eds.). (2008). *Biophilic design: The theory, science and practice of bringing buildings to life*. John Wiley & Sons.
11. Hartig, T., Mitchell, R., de Vries, S., & Frumkin, H. (2014). Nature and health. *Annual Review of Public Health, 35*, 207-228.
12. Cooper Marcus, C., & Barnes, M. (1995). Gardens in healthcare facilities: Uses, therapeutic benefits, and design recommendations. Retrieved from <https://www.healthdesign.org/system/files/GardensinHealthcareFacilities.pdf>
13. Kaplan, R., & Kaplan, S. (1989). *The experience of nature: A psychological perspective*. Cambridge University Press.
14. Ulrich, R. S., Simons, R. F., Losito, B. D., Fiorito, E., Miles, M. A., & Zelson, M. (2008). Stress recovery during exposure to natural and urban environments. *Journal of Environmental Psychology, 11*(3), 201-230.

IMAGE SOURCES

- Pg 10-11 OpenAI. (2023). ChatGPT (Mar 14 version) [Large language model]. <https://chat.openai.com/chat>
- Page 16 <https://dellmed.utexas.edu/>
- Page 16 <https://www.mdanderson.org/images/hero-images/Integrated%20Media/MDACC%20LOGO.JPG>
- Page 16 <https://www.poultryproducer.com/managing-nuisance-odor-and-dustfrom-poultry-growing-operations/>
- Pg 17 OpenAI. (2023). ChatGPT (Mar 14 version) [Large language model]. <https://chat.openai.com/chat>
- Pg 21 <https://www.etsy.com/listing/1183059423/simple-earring-display-card-template>
- Pg 22 <https://www.nationalbreastcancer.org/breast-cancer-facts/>
- Pg 23 <https://in.pinterest.com/pin/474003929534051077/>
- Pg 30,31 Google maps.(2024).Map of Erwin special center, Austin. Retrieved from <https://www.google.com/maps/place/Frank+C+Erwin+Special+Events+Center,+1701+Red+River+St,+Austin,+TX+78701/@30.2769594,-97.7347834,17z/data=!3m1!4b1!4m6!3m5!1s0x-8644b59872e29883:0x8895d5a7d37f53ef!8m2!3d30.2769548!4d-97.7322085!16s%2Fg%2F12hk84fxh?entry=ttu>
- Pg 32 Williams, S. A. (2021). The Texas State Capitol from the top of the Dewitt C. Greer building [Photograph]. Texas Highways. Retrieved from <https://texashighways.com/travel-news/know-before-you-go-what-to-expect-when-visiting-the-texas-state-capitol-in-early-2021/>
- Pg 32 Author Unknown. (2022). Frank Erwin Center: Special events home of UT Texas Longhorns basketball to close in May. Austin American-Statesman. Retrieved from <https://www.statesman.com/story/sports/2022/03/08/frank-erwin-center-special-events-home-ut-texas-longhorns-basketball-close-may/9416947002/>
- Pg 33 HKS Architects. (n.d.). Dell Seton Medical Center at the University of Texas. Retrieved from <https://www.hksinc.com/what-we-do/case-studies/dell-seton-medical-center-at-the-university-of-texas/>
- Pg 32 Speck, L. (n.d.). UT Austin Medical District Master Plan. Larry Speck. Retrieved from <https://larryspeck.com/architecture/ut-austin-medical-district-master-plan/>
- Pg 51,71,91 OpenAI. (2023). ChatGPT (Mar 14 version) [Large language model]. <https://chat.openai.com/chat>