



2020

ANTHONY ANTUNEZ

COMMUNITY REVITALIZATION

Koichiro Aitani

Committee Chair

Russell W. Reid

Committee Member

Juan Carlos Baltazar

Committee Member

James Haliburton

Studio Professor



TEXAS A&M
UNIVERSITY

COMMITTEE MEMBERS

Introduction

History

Location

Concept

Community Level

Amphitheater

Open Field

Local Community Level

Rotating Screens

Open Plaza

Core Level

Sanctuary

Natural Ventilation System

Program

Landscape Plan

Paving Plan

CONTENT



Architecture is more than just coming up with a building design. It becomes a reflection of its surroundings and its community needs. By embracing the public in architecture, we can serve the community by not just having a place of worship, but a place where people can gather and feel welcome when they come to the site. By using architecture, we are able to satisfy the needs of the community.



INTRODUCTION



Pastors : Felix and Patty Saldaña
Bryan, Tx U.S.



Pastors: Carlos and Karla Mena
Departamento La Paz, El Salvador



The ministry has the opportunity to expand again in the country of El Salvador with a new building. We can see in the image that they are in a small enclosed room that is just made of 4 walls. The church has outgrown this space, and they are now having service outdoors. With the help of the Bryan branch, we have been able to acquire a 4 acres piece of land.

Background:

Founded on July 21, 1999 by
Pastor Felix and Patty Saldaña in the city of Bryan
-350 Members

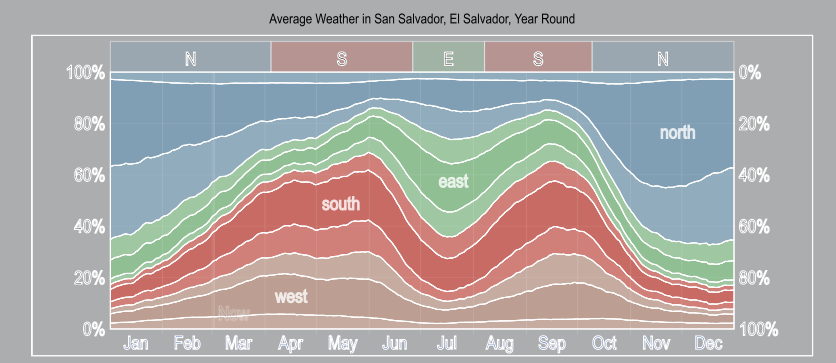
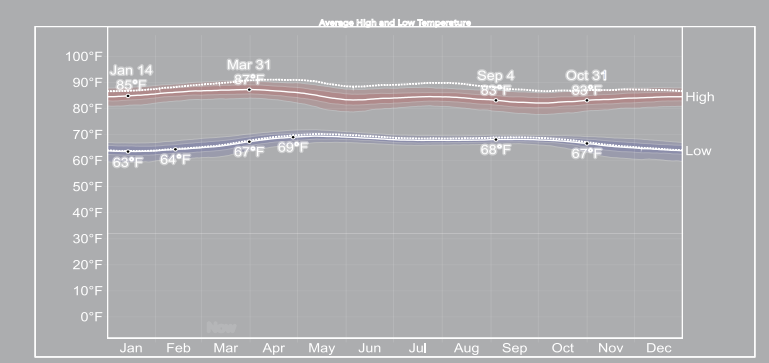
Three Branches:

Houston: Pastors: Fernando y Lupita Rubio
-120 Members
Florida: Pastors: Luis y Martina Torres
-85 Members
El Salvador : Pastors: Carlos and Karla Mena
- 94 Members

LOCATION

Project Location : EL SALVADOR
4 Acres : 196m x 82m (643 ft X 269 ft)
Address:
Urbanizacion el progreso valle la seiva poligono
Departamento la paz calle ala herradura.

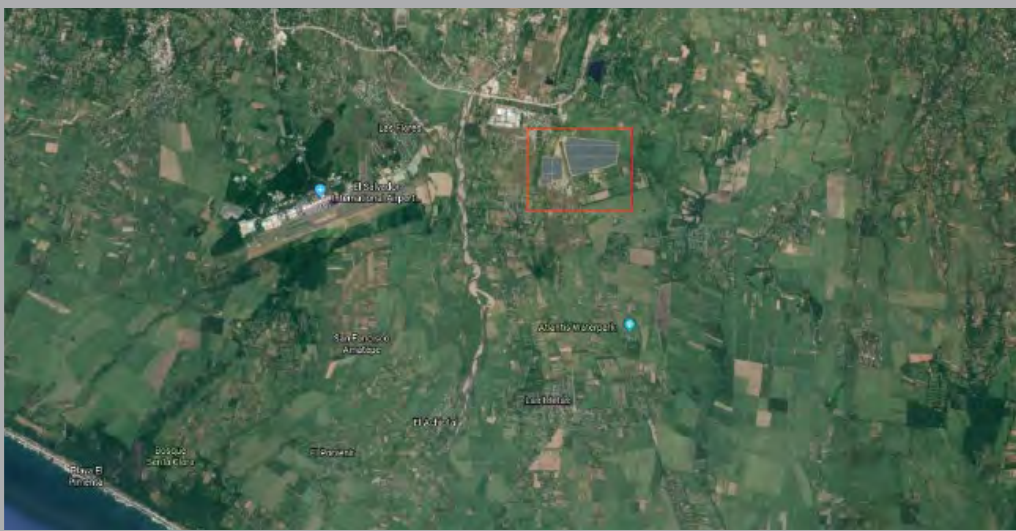
CLIMATE



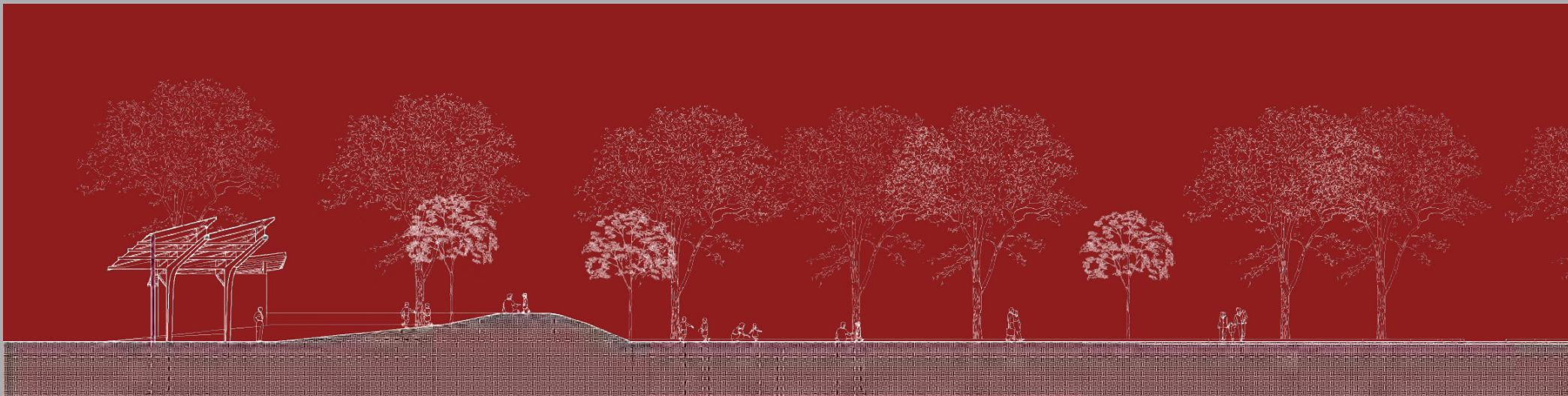
The entire project is naturally ventilated. Due to high climates in this location it is not uncommon for buildings to be naturally ventilated and exposed to the outside. Having a natural ventilated design will reduce cost and have a more energy efficient building.

CONCEPT

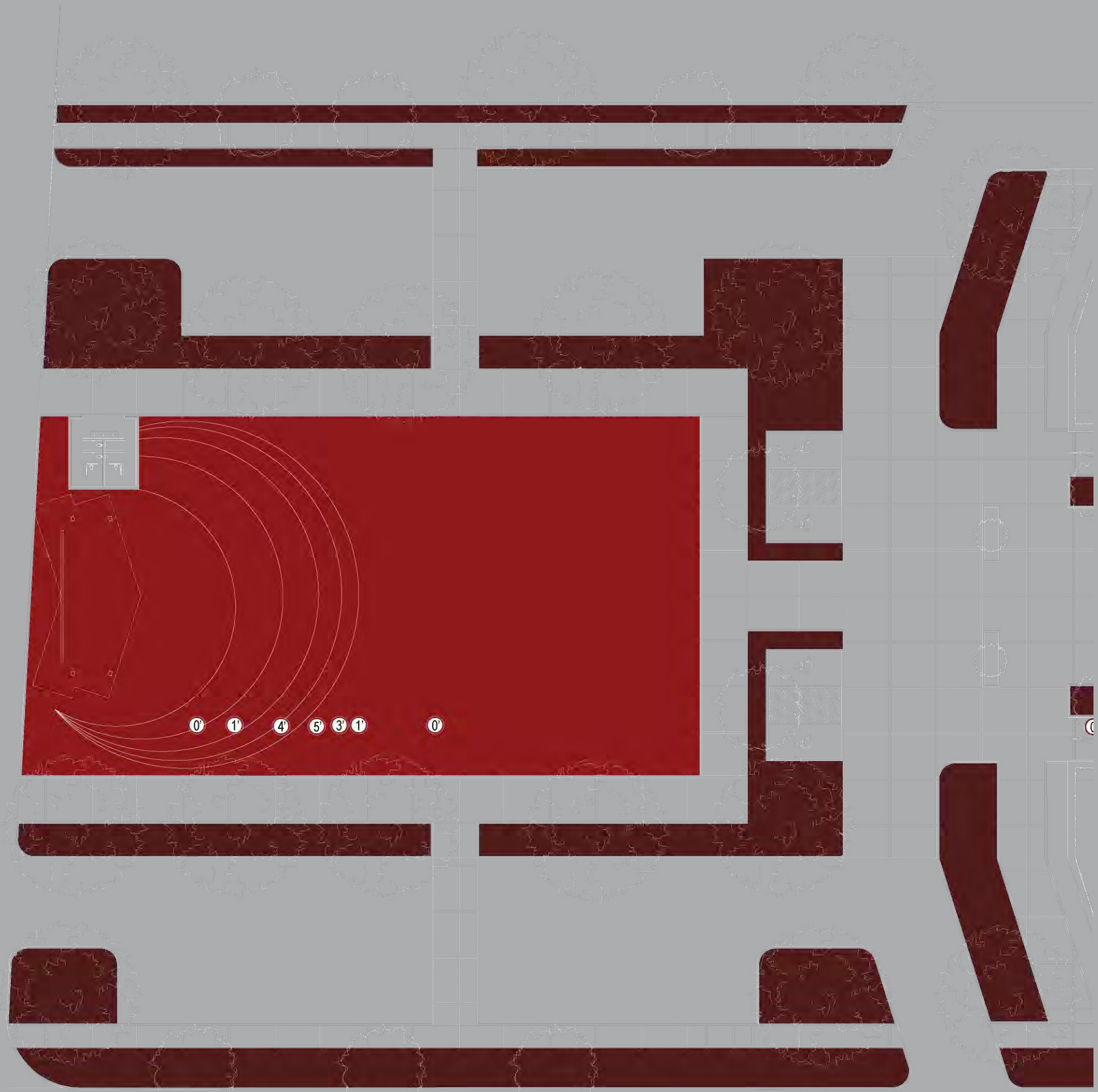
The concept of this project fulfills a need for the church and the community by offering a space to the community and by embracing the public needs. This concept is the key element to revitalizing and transforming the community to something great.



Where people go and where people meet is the core of what makes the community work. The community level is designed to be a public space that is a valued asset where cities embrace the concept of creating more vibrant and welcoming spaces for everyone to use. By having this, it provides people many opportunities to come together and engage. It's not just focused on the local community, but for tourists and other communities around the area as well.



COMMUNITY LEVEL



The community level is a large field about 17,500SF that is open to anyone and consists of two parts. The first part is an informal amphitheater at the north end of the site. The other end of the site can be used for multiple usage.



Bird's eye view of community level

The first part is an informal amphitheater at the north end of the site. The open inviting nature of the layout makes the space feel informal, because it is now one large open field with a level change on one end. By designing a hill, it creates a separation from the open field but still feels connected at the same time.



Bird's eye view of community level



Community level view



Looking at amphitheater



Standing in the amphitheater looking at the sanctuary



Looking at amphitheater

The covering of the amphitheater uses the same structure as the main sanctuary at a smaller scale. It is made by two glulam trusses that have a fixed connection to the ground. Sheet metal is used for the covering of the roof. Local materials have been used in order for it to become more cost effective. By using the same design as the sanctuary, it creates a balance in the whole design as well as a connection to the core level of the project.



Soccer match in the open field



Farmers market event in open field



Soccer match in open field

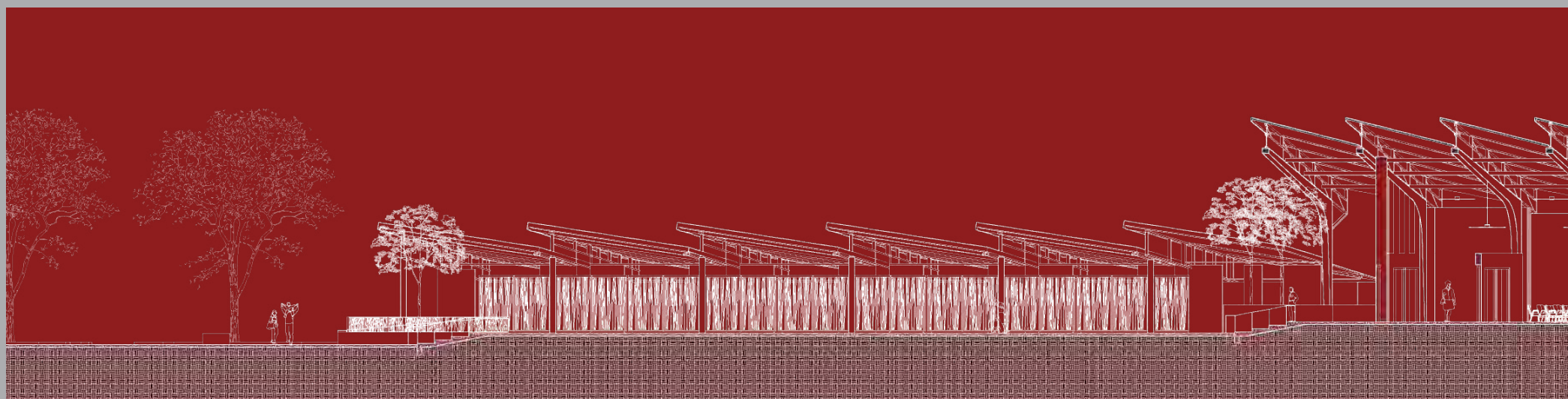
Soccer is a sport that is often played in El Salvador. The field can be utilized as an informal soccer field where people can gather on the weekends and gather as a community.



Farmers market event in open field

Community space is essential. Residents of the community use the roadside to set up their small markets and sell their goods. The community space creates a venue for this type of commerce in a safe and inviting space. This will benefit the community by actually having a place to sell their goods to make a living instead of risking their lives day to day.

The Local Community space is designed mainly to focus on the local community but does not limit itself there. There are seven classrooms that can be used not only for church teachings but as well as for higher education. By doing this, the community will be on the start of growing. There will now be 2 schools for children to be able to attend in the community. By doing this, the children will have a better opportunity to become someone successful in life and become someone for themselves.



LOCAL COMM. LEVEL

The space is made by two wings with an open plaza in the middle. The wings house a total of seven classrooms that can be used for education spaces such as classrooms as well as Sunday school classes. There is an event space that can be used as a cafeteria for the students.



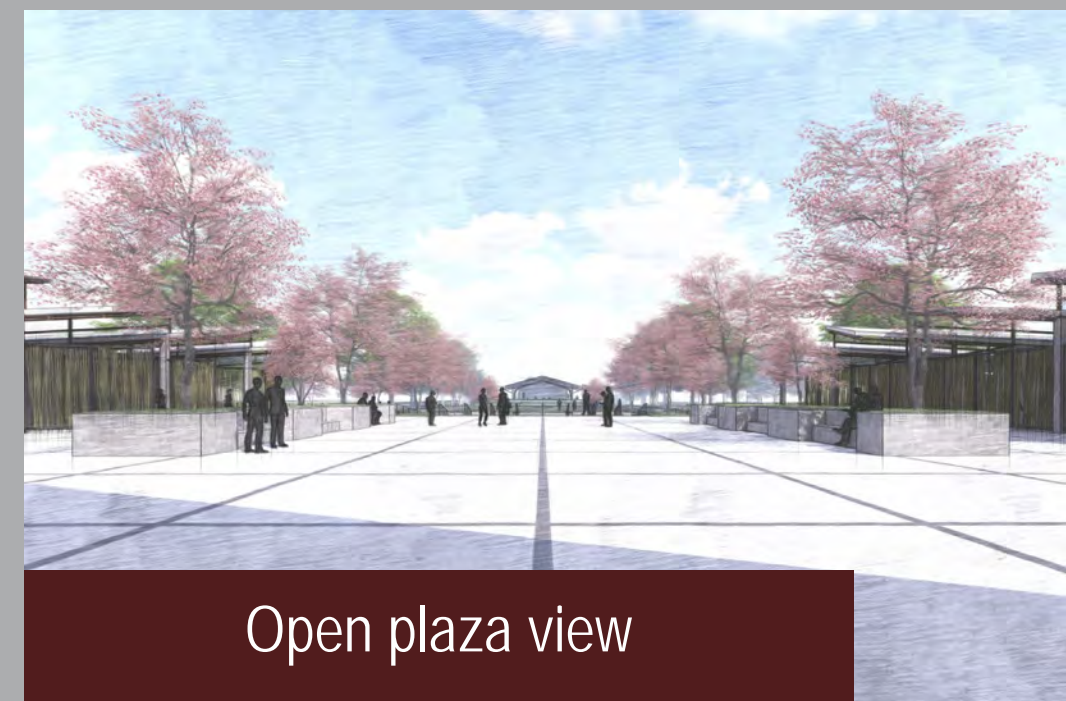
Exterior classroom view

The entire project is built from locally sourced materials, and the form is influenced by the choice of locally sourced materials and construction practices. Reinforce masonry construction is the most common type of construction. The windows are exposed to the outside but have steel frames for security. By doing this, we allow the classrooms to be natural ventilated.

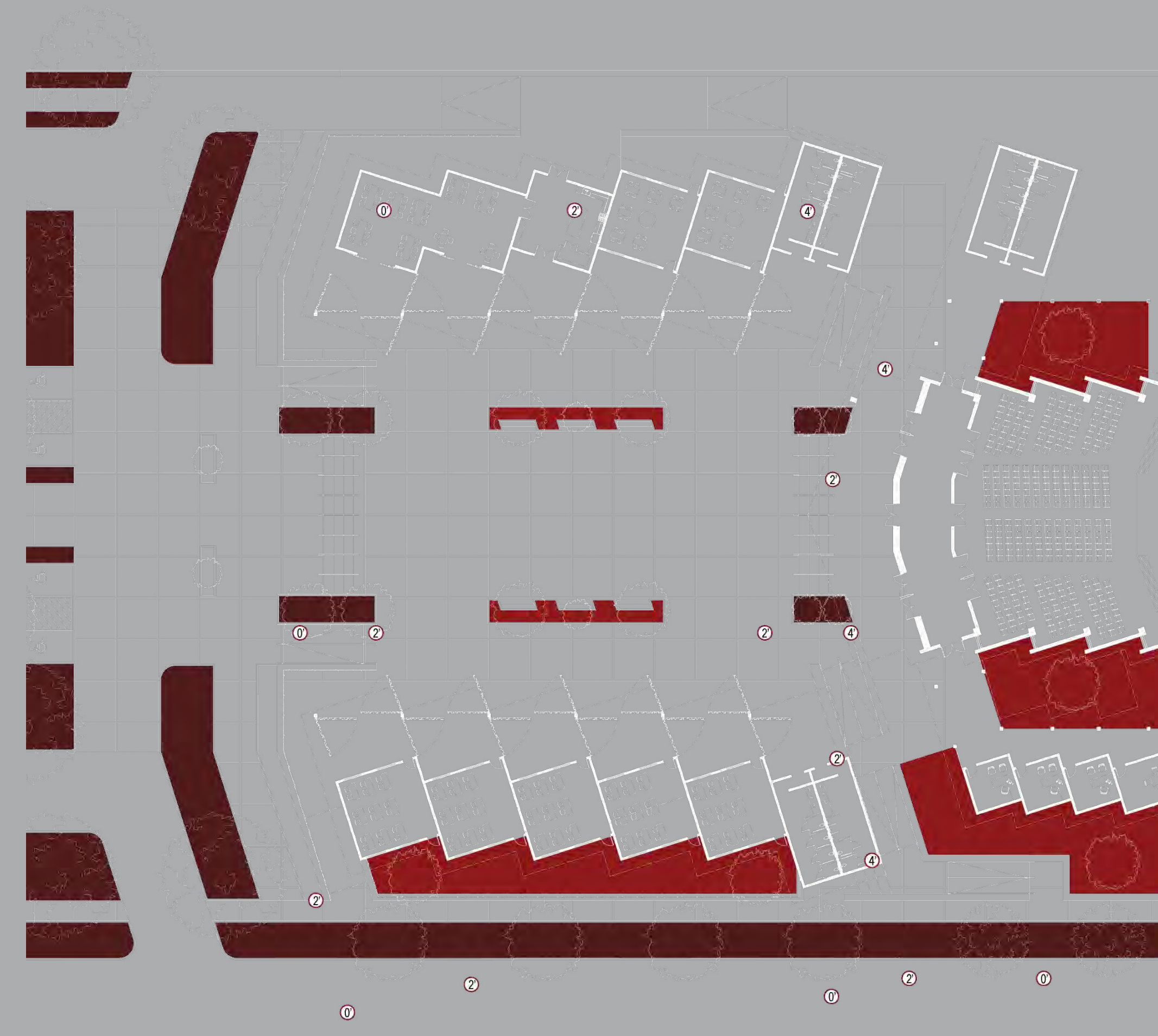


Interior classroom view

The space is designed to allow an open plaza in between. The plaza plays an important place for social lives, and it also represents the whole community. It creates a space where people can come together, and it can be used for multiple outdoor events and school activities.



Open plaza view



- INTERACTIVE GREEN SPACE
- GREEN SPACE
- # ELEVATION CHANGE



0 | 10 | 25 | 50 | 100

LANDSCAPE SITE PLAN

A key feature of this area is the folding screen walls. They can be put into several positions which change the nature of the space and enhance the variety of functions. The screens are made from a steel frame with bamboo infill. Bamboo is an abundant local material that is durable and flexible to work with in the area. The slatted wall allows air to flow into the space. Another function of the screens can be used as the corridor for the classrooms, and the screens can be folded in half and used as an entrance to get into the classrooms. Another space that the screens can create is an extension to the open plaza. By doing this, the corridor turns into a section that can be used by the public.



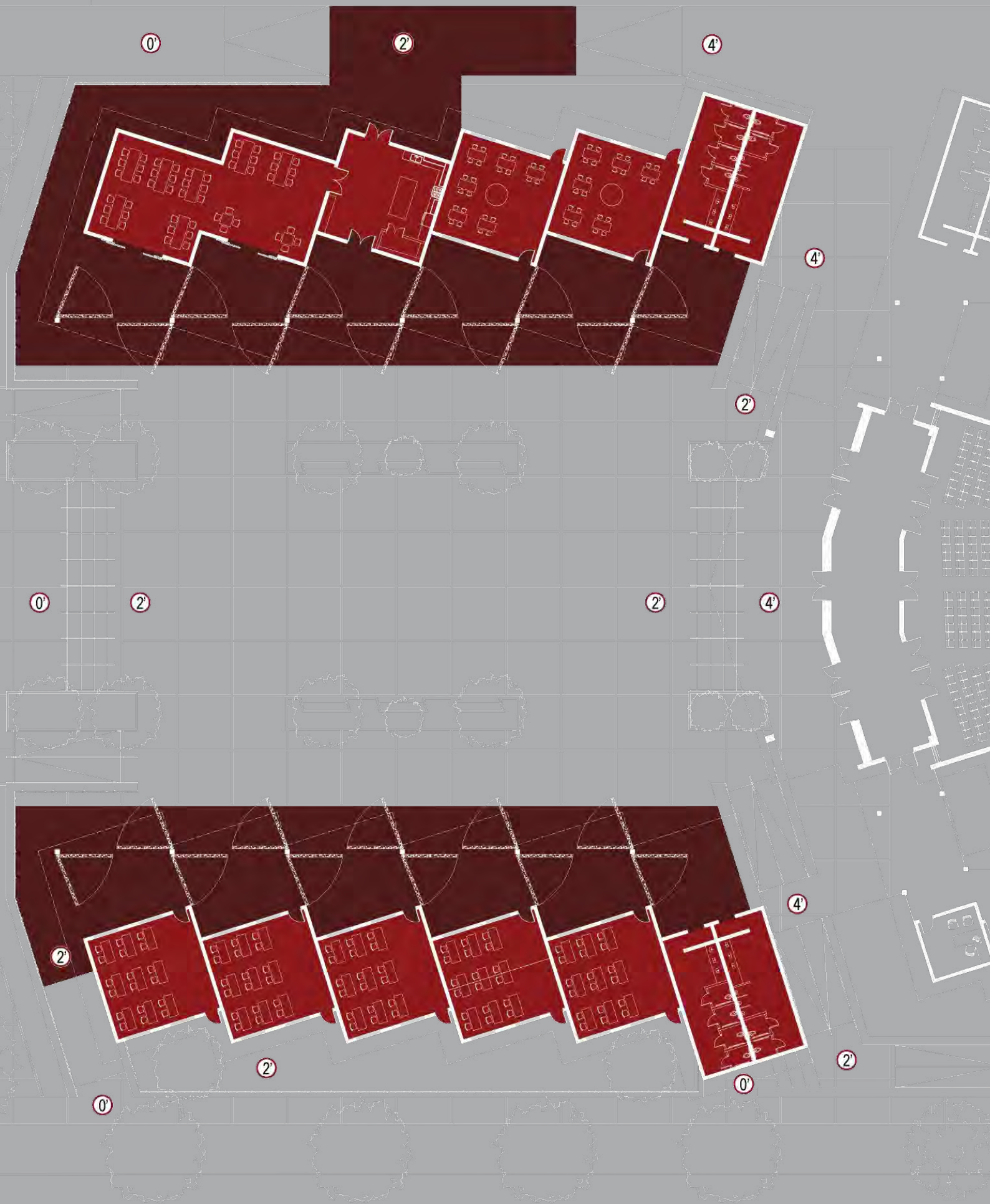
Screens set as a corridor



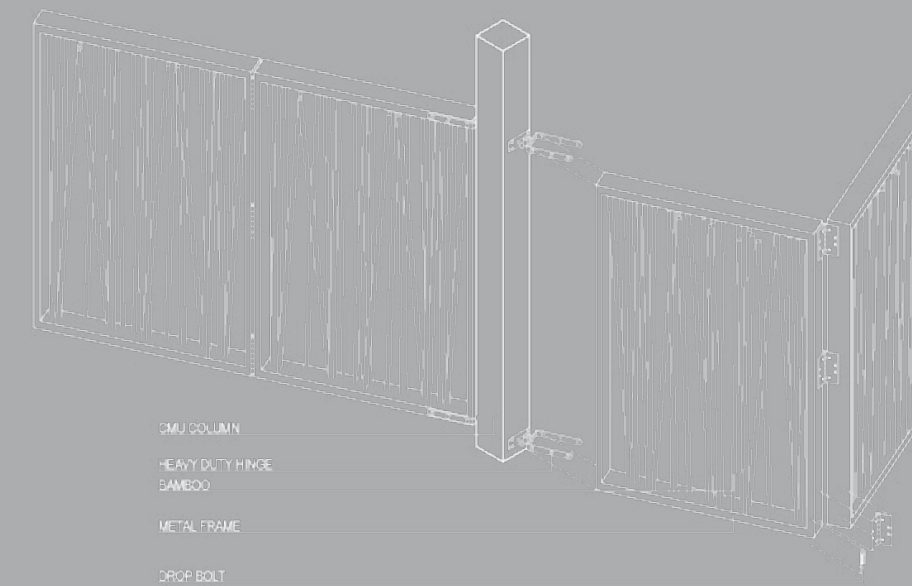
Screens set as entrances



Screens set as extensions



CLASSROOM PLAN
0 10' 25' 50' 100'





Plaza bird's eye view



Bird's eye of market in plaza



Plaza seating

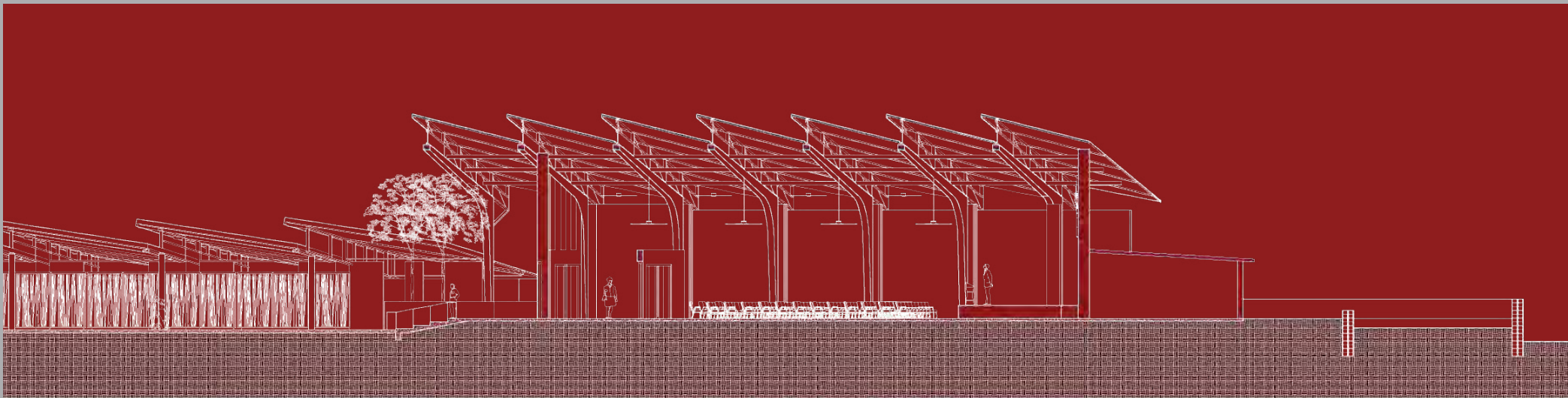
Seating areas have been designed in order for people to be able to gather and socialize.



Market view in plaza

A farmers market with tents is one of the ways that the open plaza can be used for as well. By having this it will create possibilities for people in the community to gather.

The core level is the highest point of hierarchy of the project. Although it is the highest point, it does not mean it is the only reason why people will come to this site. It only plays 1 part of the reasons why people will gather here. The core level is focused to connect the relationship with people and God.



CORE LEVEL

The sanctuary is the main core of the design. It is designed for people to have a place to gather and worship a higher god and make it feel like God's home and feel connected to him.



Sanctuary front view

The building is naturally ventilated. All the openings are exposed to the outside to allow the breeze to flow in and cool down the building. There are fans for mechanically induced circulation throughout the building. The openings are guarded by steel frames for security but still allow for the air to flow in.

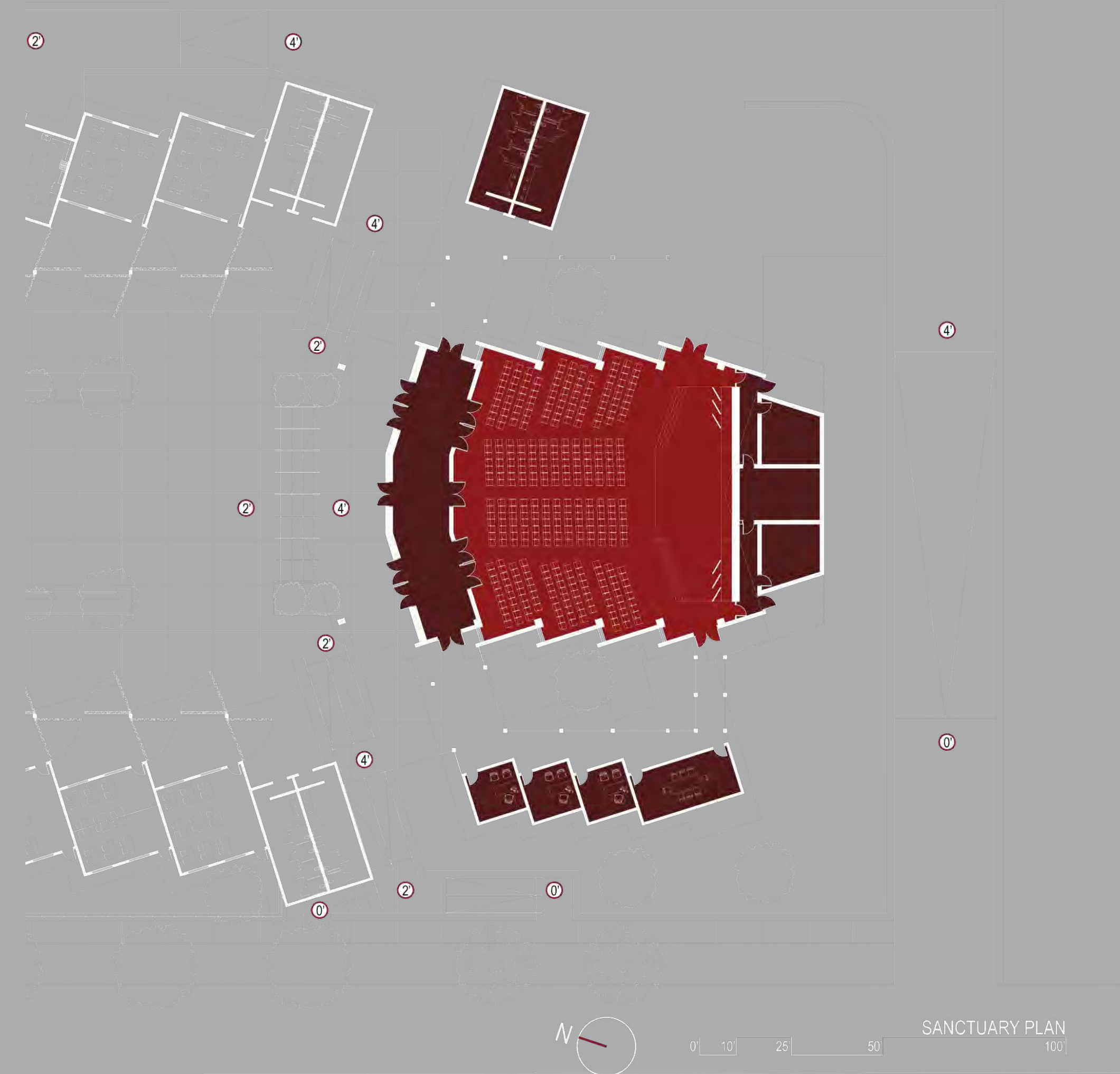


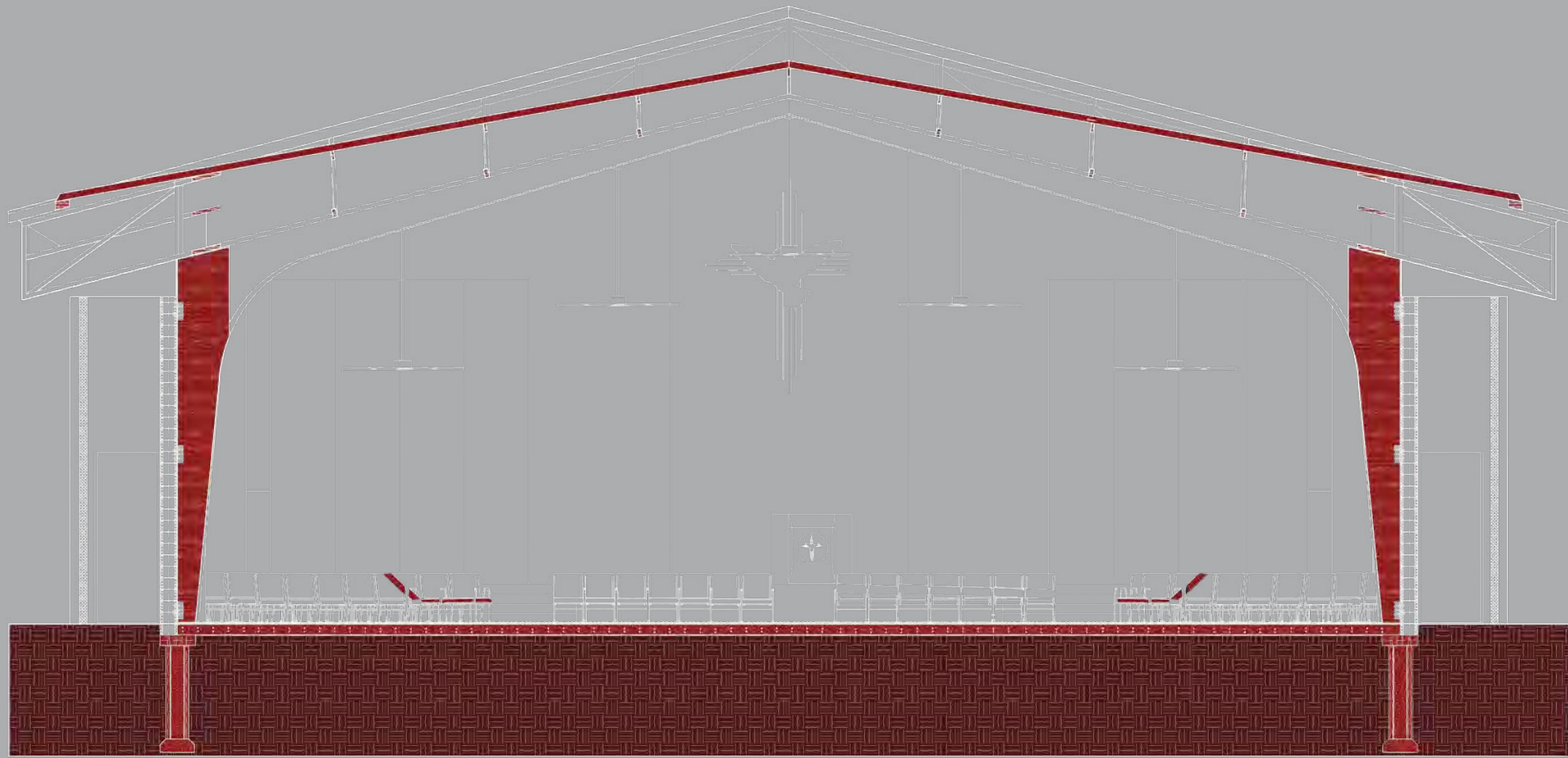
Front entrance view

The Core Level is raised 4 feet to the community level. This is designed in order to show the highest hierarchy point of the site. The height of the sanctuary stands at 43 feet high. The reason for that is to be able to see it from far and mark the main hierarchy point of the site.



Far sanctuary front view





Sanctuary Section



Perspective view of interior



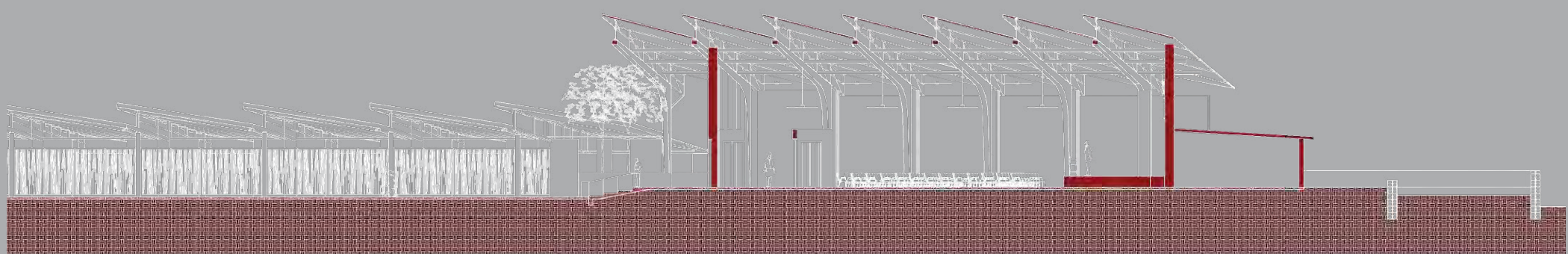
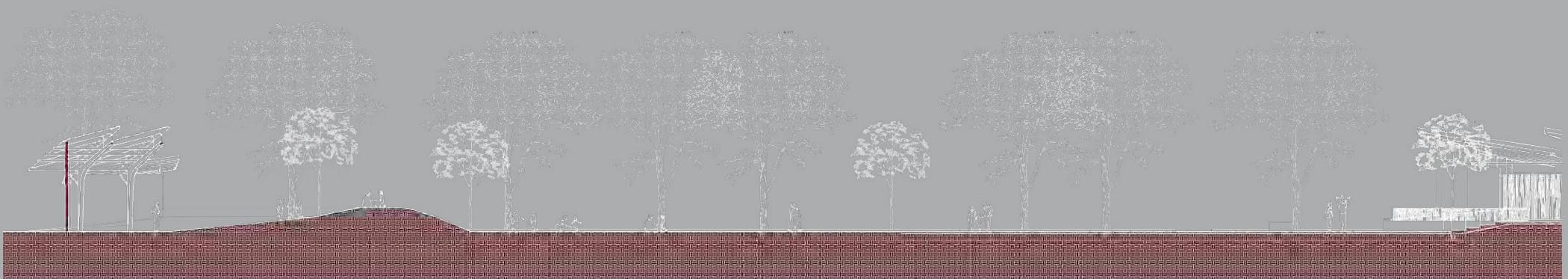
Standing in audience view

The sanctuary is designed to have all the openings on the North side of the building in order to create different feelings. The design of the space focuses the attention of the congregation toward the altar.

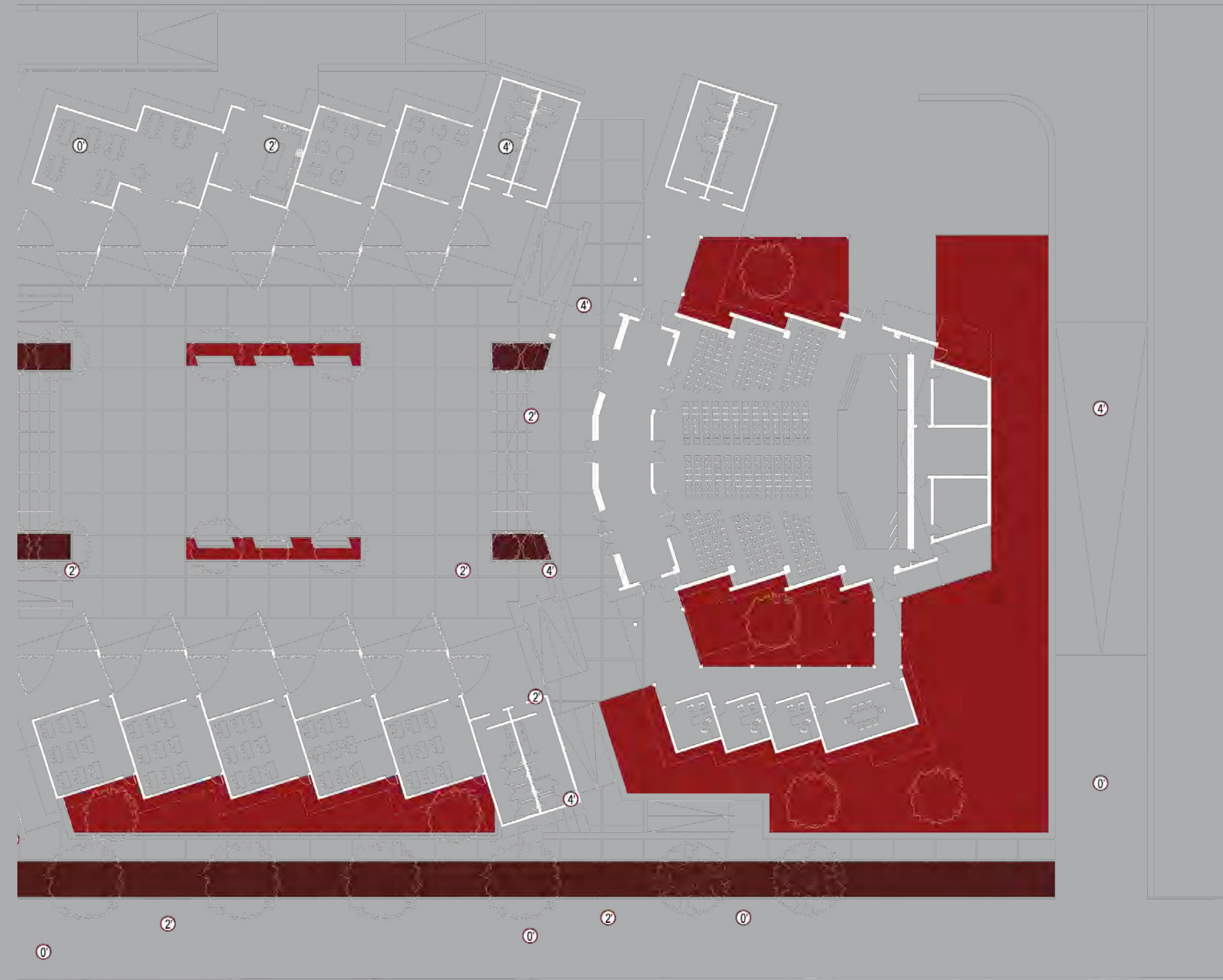
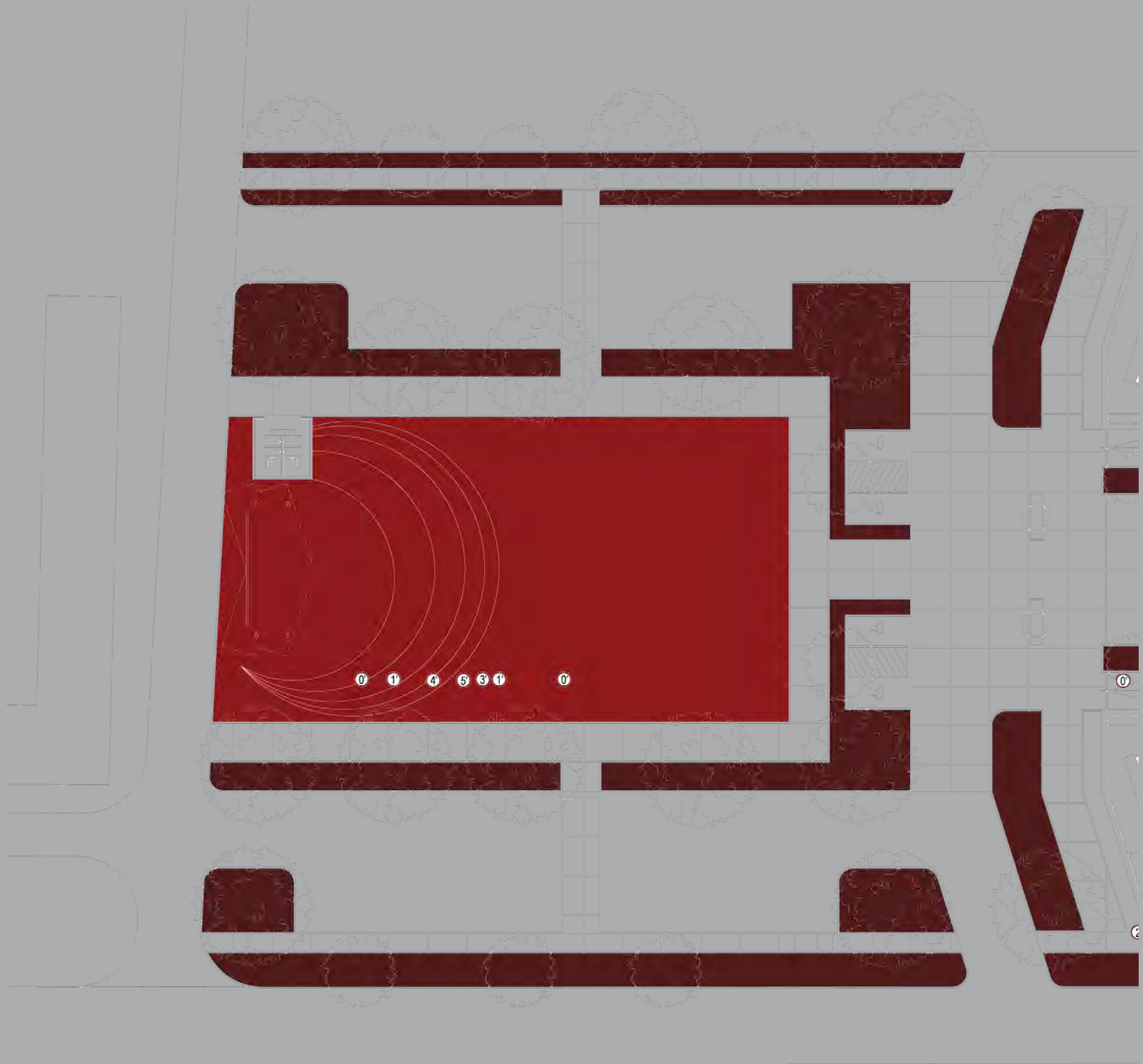


Standing in podium view

You can see how different these two images are and see where the main focus is when sitting in the audience is. When a preaching is taken into place, distractions always occur. This design helps the audience keep its focus on the preaching and away from whatever is happening on the outside.



SITE SECTION

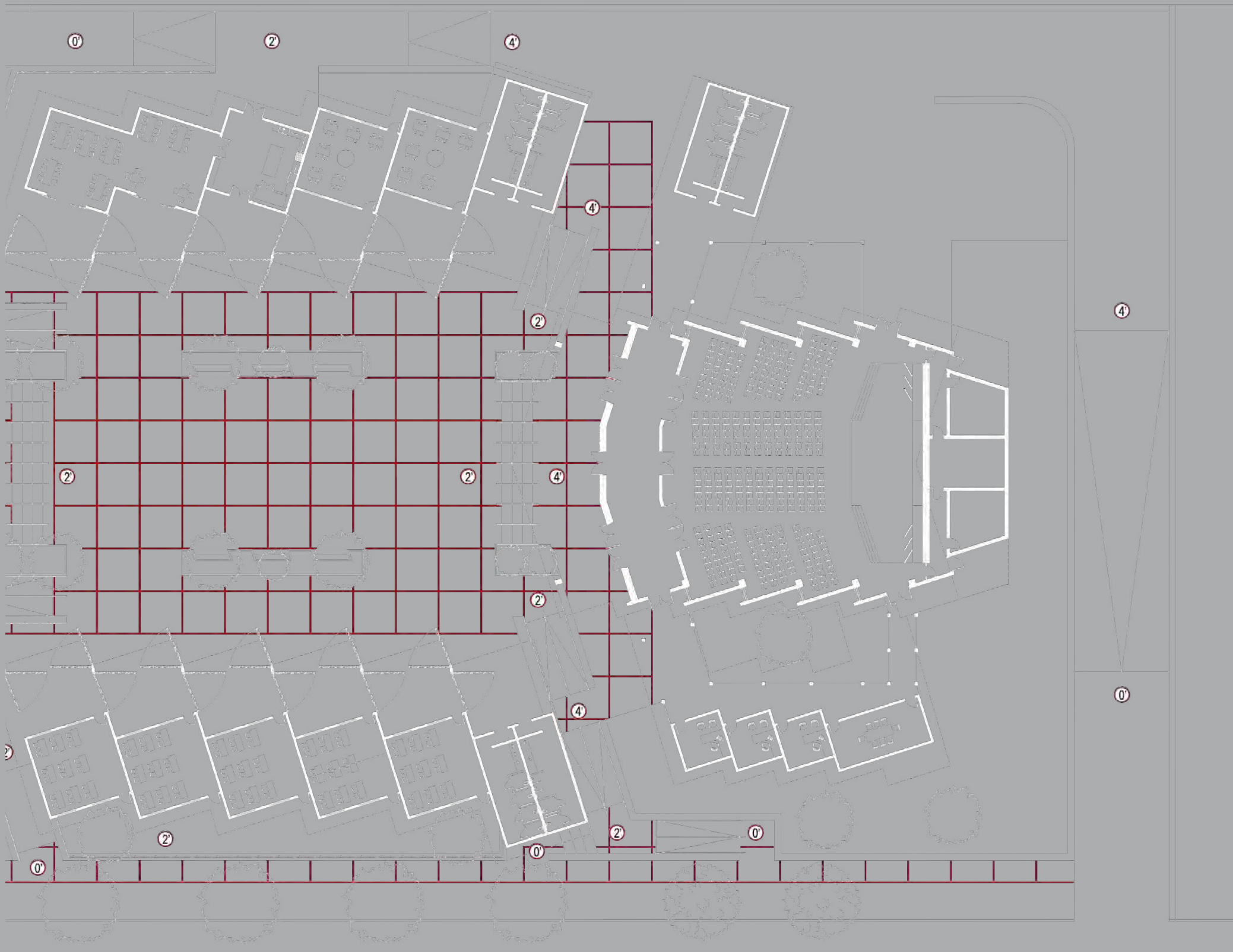
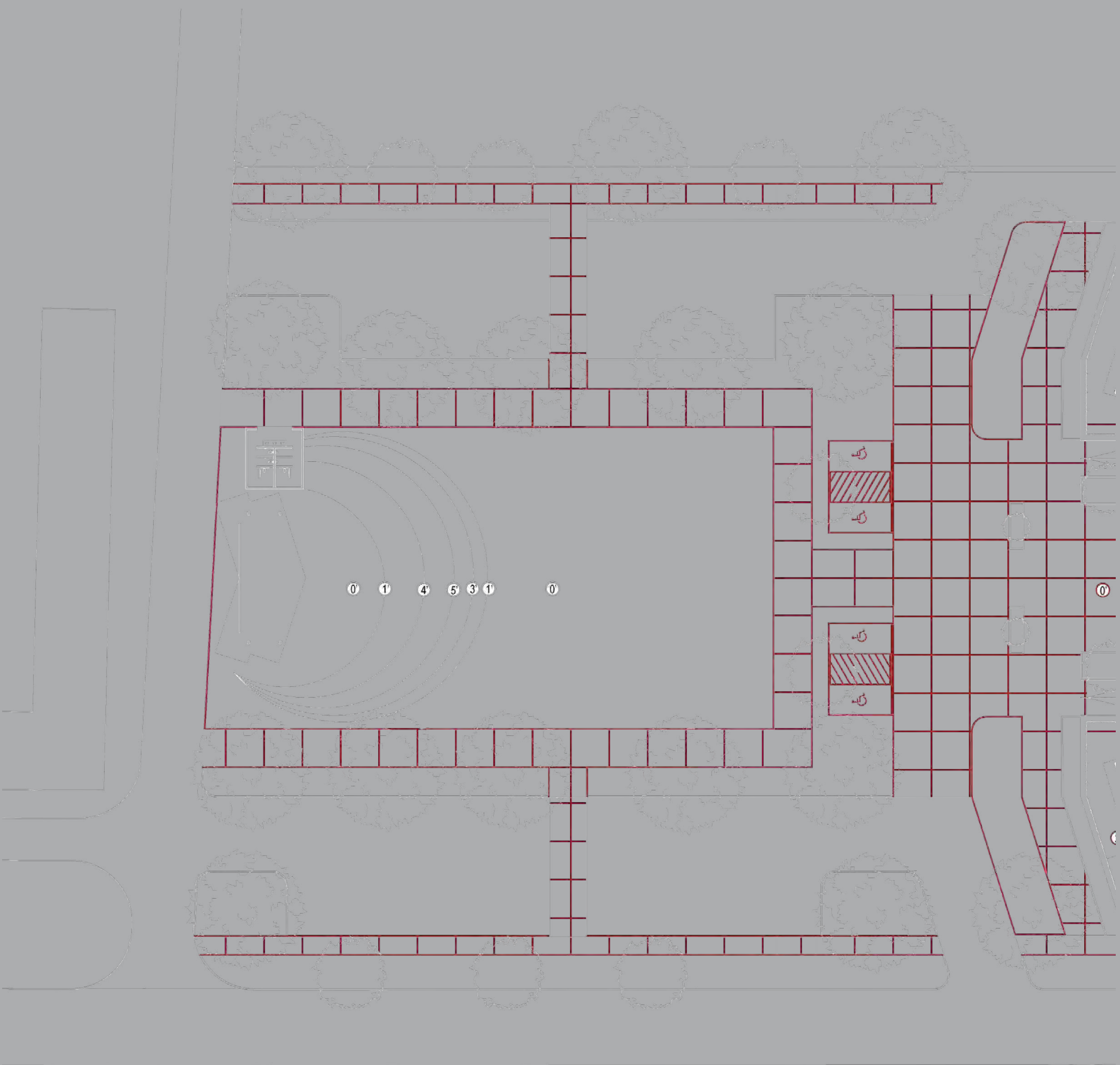


- INTERACTIVE GREEN SPACE
- GREEN SPACE
- # ELEVATION CHANGE

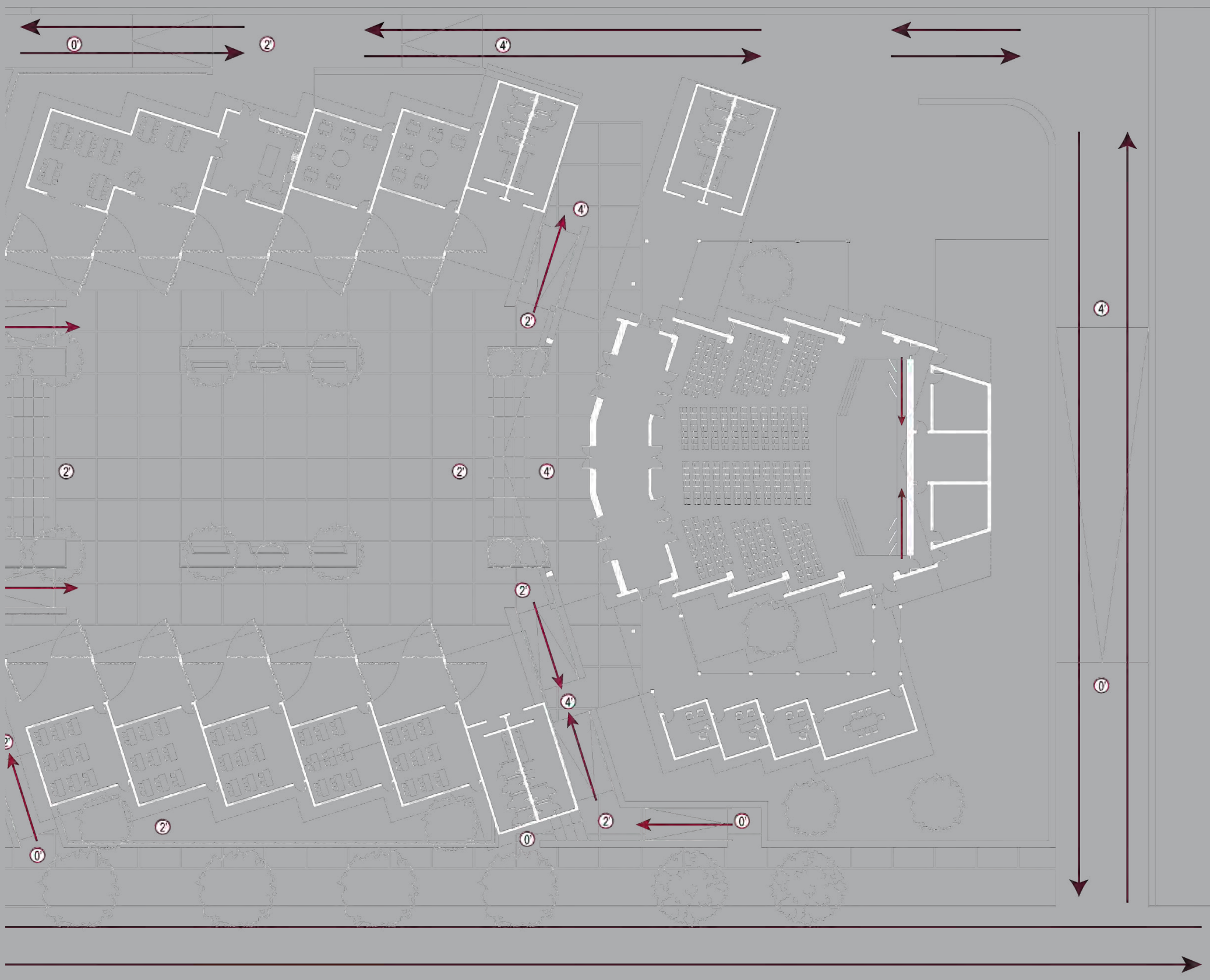
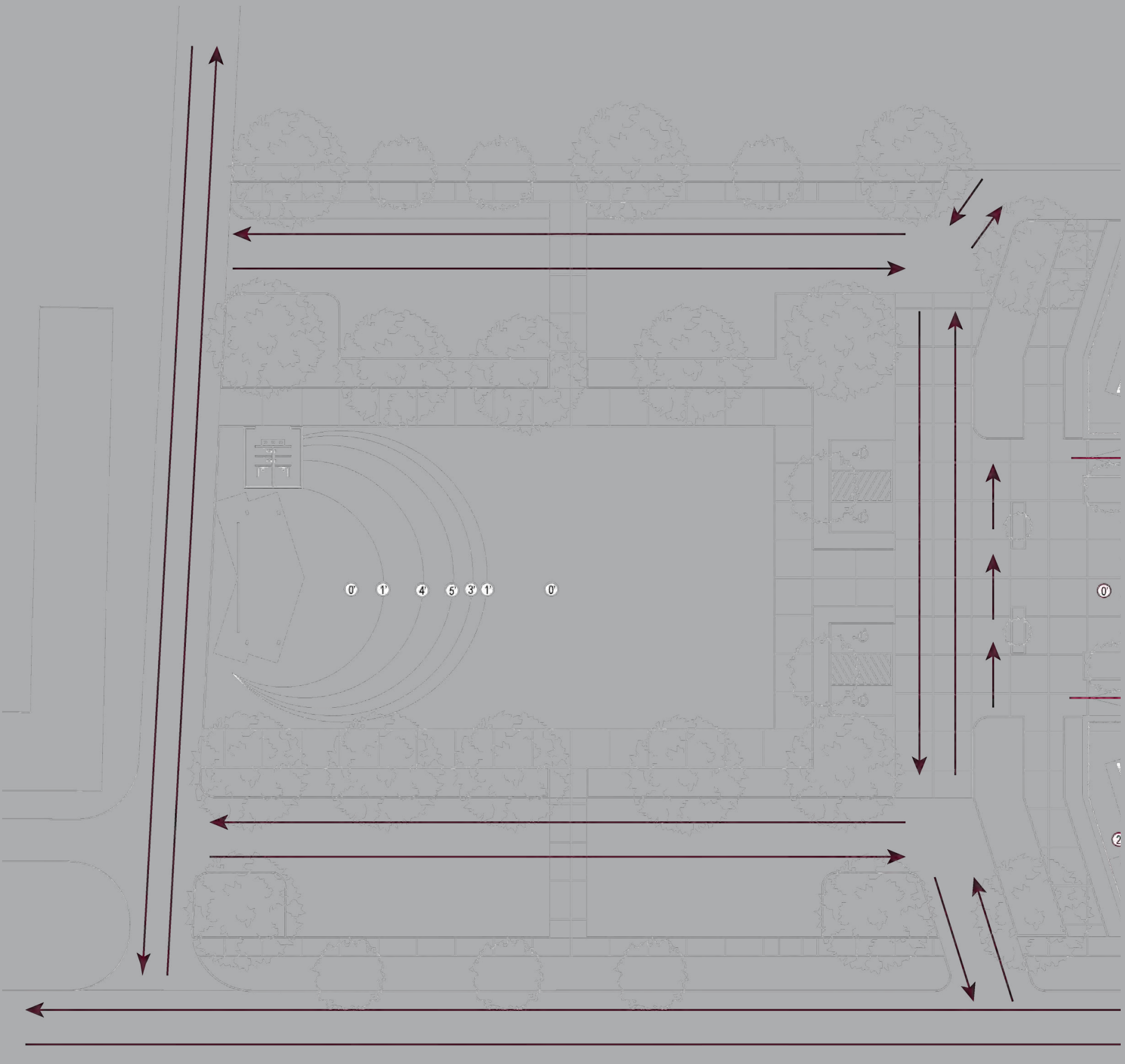


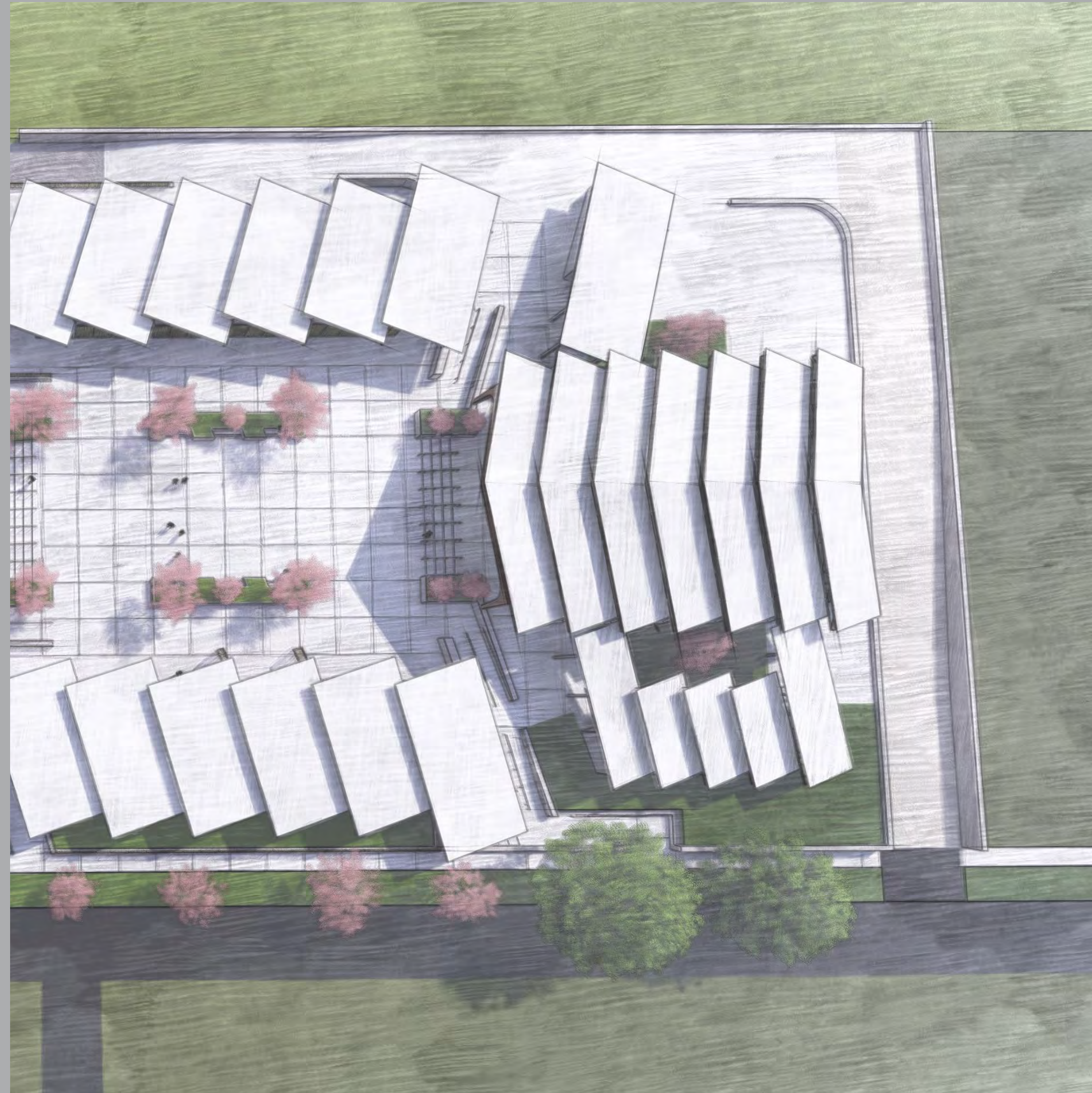
LANDSCAPE SITE PLAN

The board shows the grid designed for the paving where the general public has access to. The sidewalks are 12 feet to emphasize that this site is open to all the public and not just the local community. By doing this, we offer a space to the community and embrace the public, and this will lead to a start in revitalizing the community to something great.



This plan shows the vehicular circulation routes on the site. Marron arrows show how the cars can circulate through the community level as well as how service cars can access through the different levels of the project. There is a parking lot on each side of the open field because it is not only for people from the local community. Tourists and other people will be able to use it. The red arrows show the ADA circulations and how people can access the different levels of spaces using the ramps provided.





Climate Data

<https://www.google.com/earth/>

Map Images

<https://weatherspark.com/>

INFORMATION

