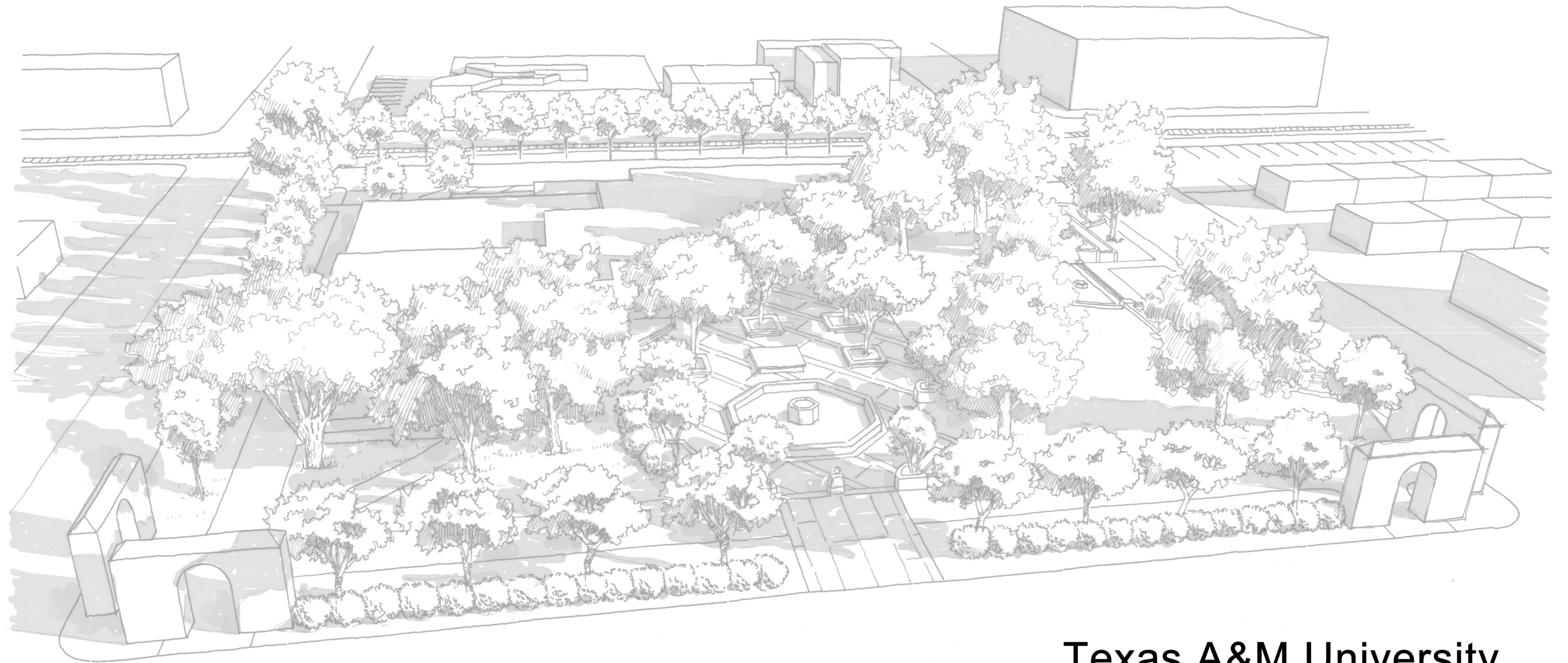


Bruni Plaza Design

Laredo, Texas



Texas A&M University

Department of Landscape Architecture and Urban Planning

Wei Pan

Master of Landscape Architecture

Russell Reid

Associate Professor of the Practice
Landscape Architecture & Urban Planning

Eric Bardenhagen

Assistant Professor
Landscape Architecture & Urban Planning

Content

Inventory Analysis

History.....1

Site Location and Introduction.....2

Programming

Goals, Objectives & Design Elements.....3

Master Plan

Plan View.....4

A A' Section View.....5

B B' Section View.....6

Bird Eye View.....7

Terracing Perspective.....8

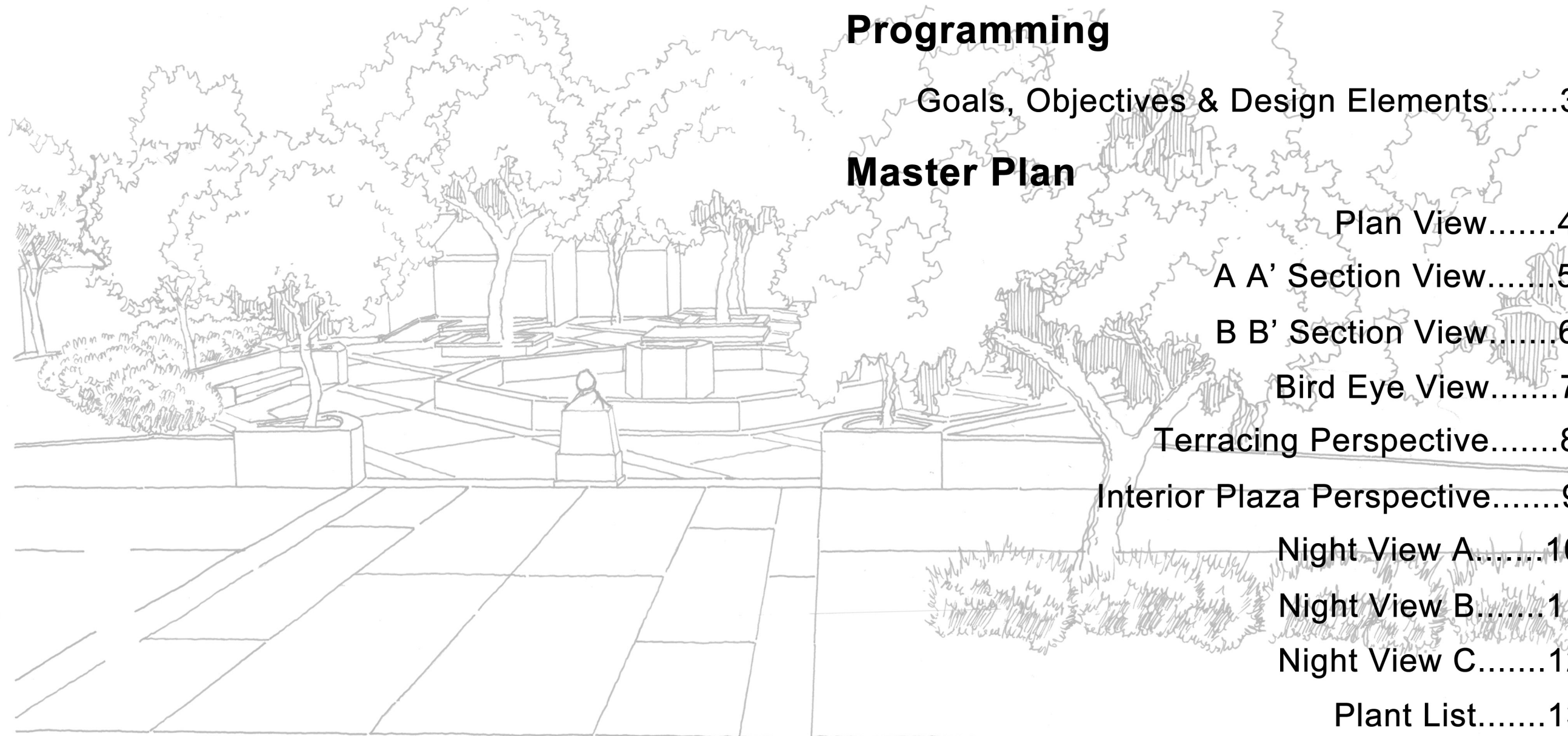
Interior Plaza Perspective.....9

Night View A.....10

Night View B.....11

Night View C.....12

Plant List.....13





History

When Juan Frenando De Placios, governor of Nuevo Santander, new Spain, designed Laredo as a villa in 1767, he Laid out a central Plaza as an integral part of city's plan. During the era of Spanish colonization, the plaza functioned as a place for public meetings, readings of decrees, and corrals for cattle roundups.

The land for this park was set aside in city plats by the Laredo city council in 1870, and designated as a public plaza. From about 1900, it was known locally as Juarez Plaza, named for the organization Sociedad Mutualista Hijos De Juarez that met west of this block.

In 1931 the plaza was renamed Bruni plaza in tribute to prominent Laredo citizen Antonio Mateo Bruni. Born in Italy in 1856. Bruni came to Laredo in 1877 and established a mercantile business. A civic leader, Bruni was elected to the city council in 1886, and to the county commission in 1894. His other enterprises included holdings in real estate and ranching.

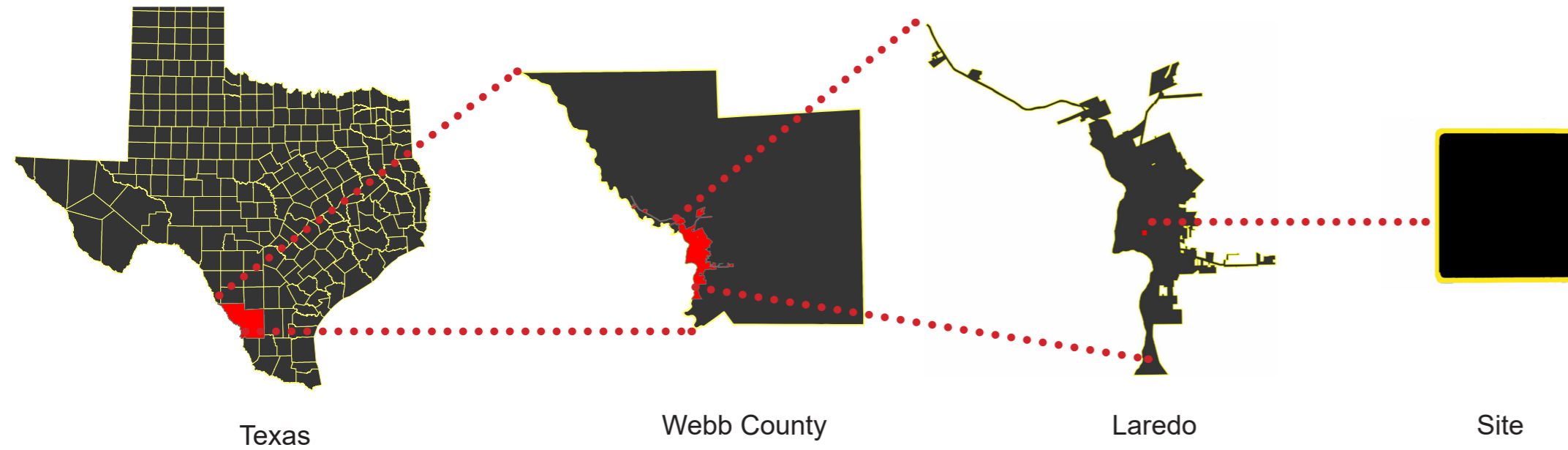
Bruni contributed to the beautification of the plaza, and after his death in 1931, his will provided funds for its care. The site continues to serve as a community gathering place.



Reference:
https://en.wikipedia.org/wiki/Laredo%E2%80%93Nuevo_Laredo



Site Location



Introduction

The Bruni Plaza Branch Library is located in downtown Laredo on the corner of San Bernardo Ave. and Washington St. This branch library houses a small circulating collection for both adults and children. The Bruni Branch Plaza Branch Library provides programs for children after school and summer reading programs from June through July. During the summer months the Library partners with Laredo Independent School District to provide free healthy meals to all children under the age of 18.

Our goal is to create a design that improves the Bruni plaza for the city of Laredo. It will satisfy the client's needs, provide the outdoor activity zone for the library users, especially children, draw in the surrounding community, improve the aesthetic appeal of the site by adding more colorful plants in the area, and night lighting effect.



Bruni Branch Library



Plaza Central Fountain



Arch



Semi-circle Fountain



Goals

- The plaza is able to function as an activity zone for library users.
- Include an environment for children's educational activities
- Increase color for the site:
- Restructure night lighting effects.
- Provide a space that is inviting while maintaining a sense of security.

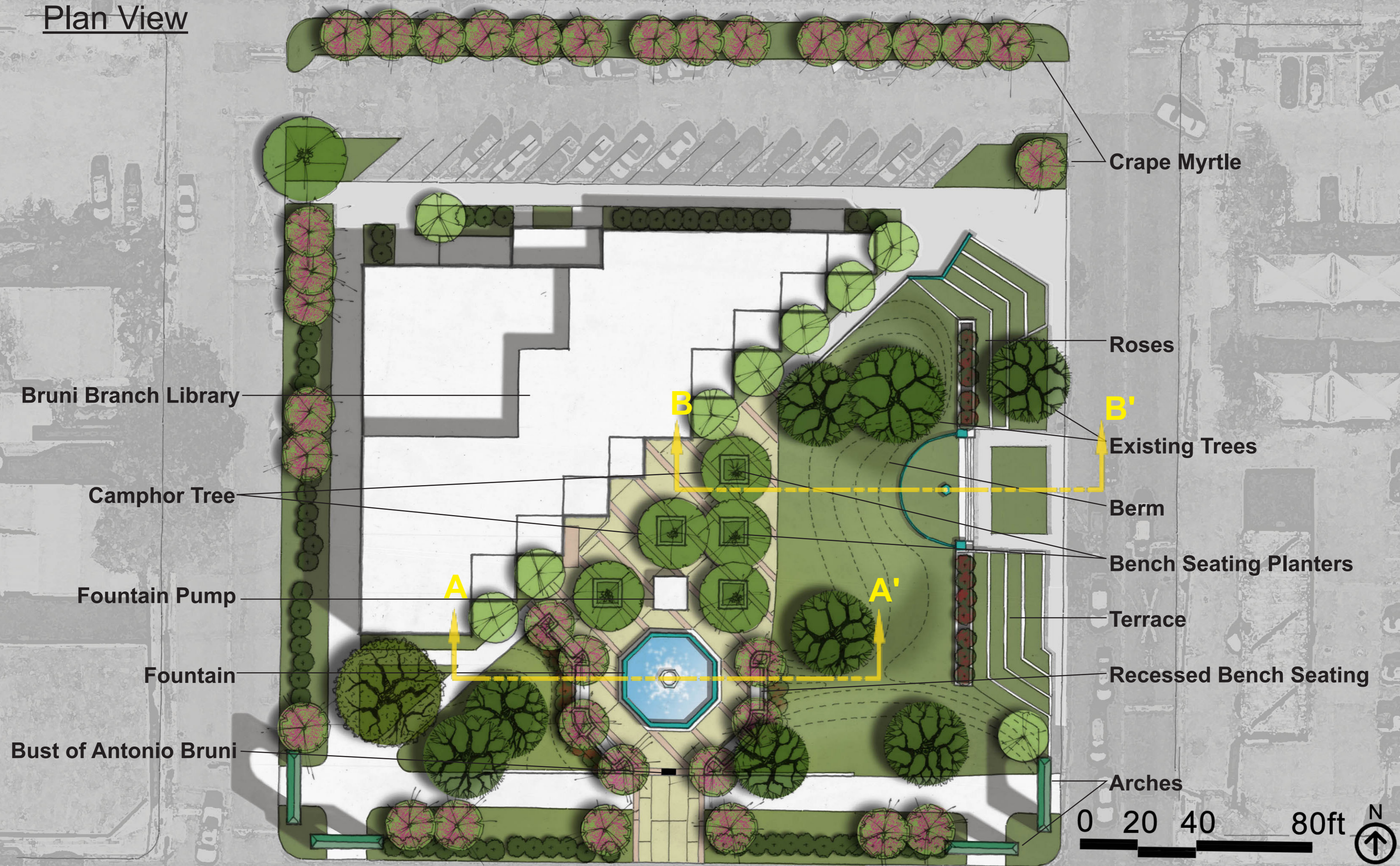
Objectives

- Provide seating areas for relaxing and public gathering
- Facilitate space for lunchtime activities and venues.
- Utilize the evaporative cooling effect of the fountain.
- Create activity zones in the lawn areas.
- Provide more tree canopies for shade.
- Implement seasonal colorful plantings
- Add night lighting for aesthetic effect and security.

Design Elements

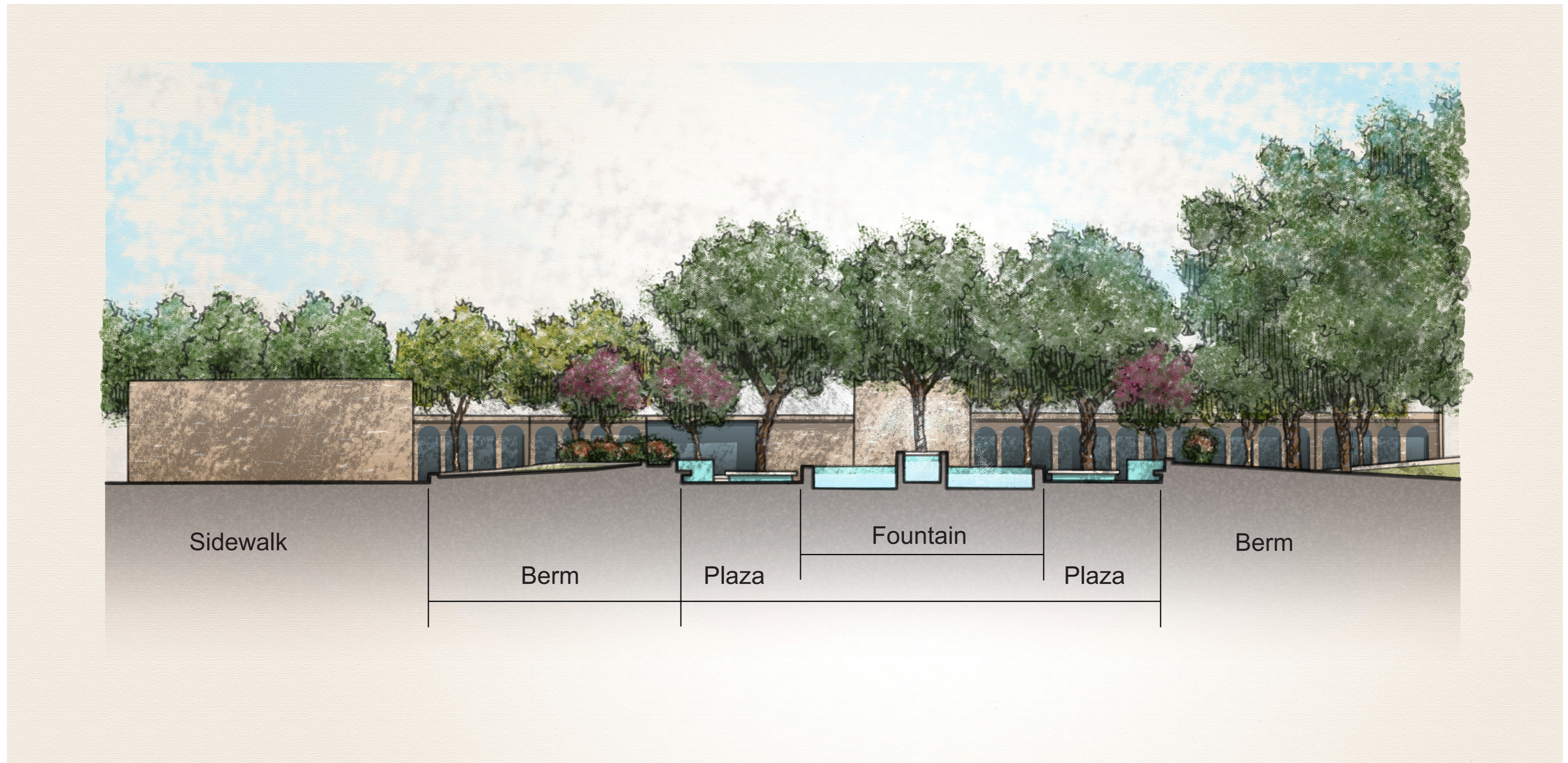
- Recessed bench seating
- Bench seating planters
- Berms
- Introduce new plantings
- Uplighting
- Security lighting
- Pole lighting

Plan View



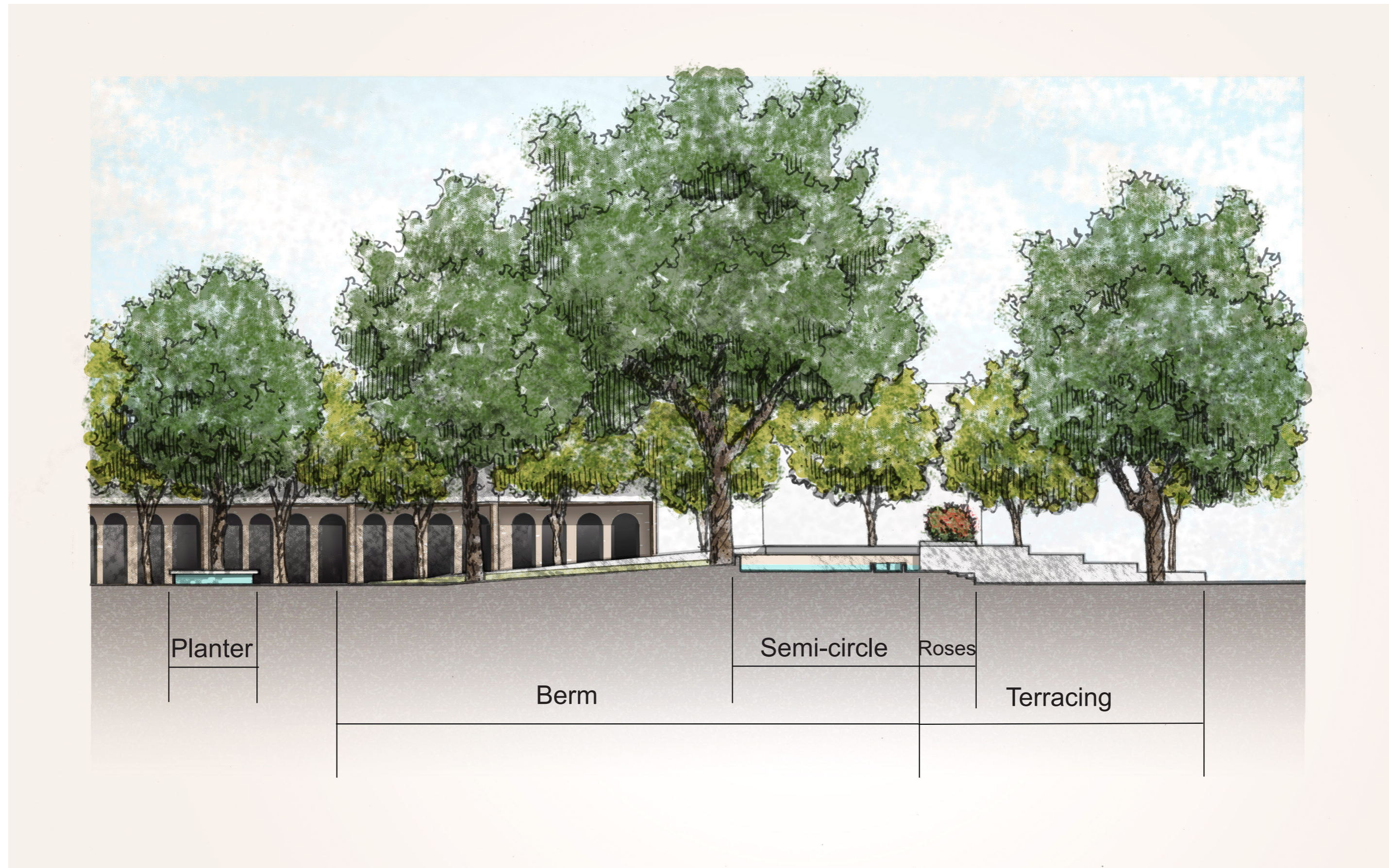


A A' Section View





B B' Section View





Bird Eye View





Terracing Perspective





Plaza Interior Perspective





Night View A



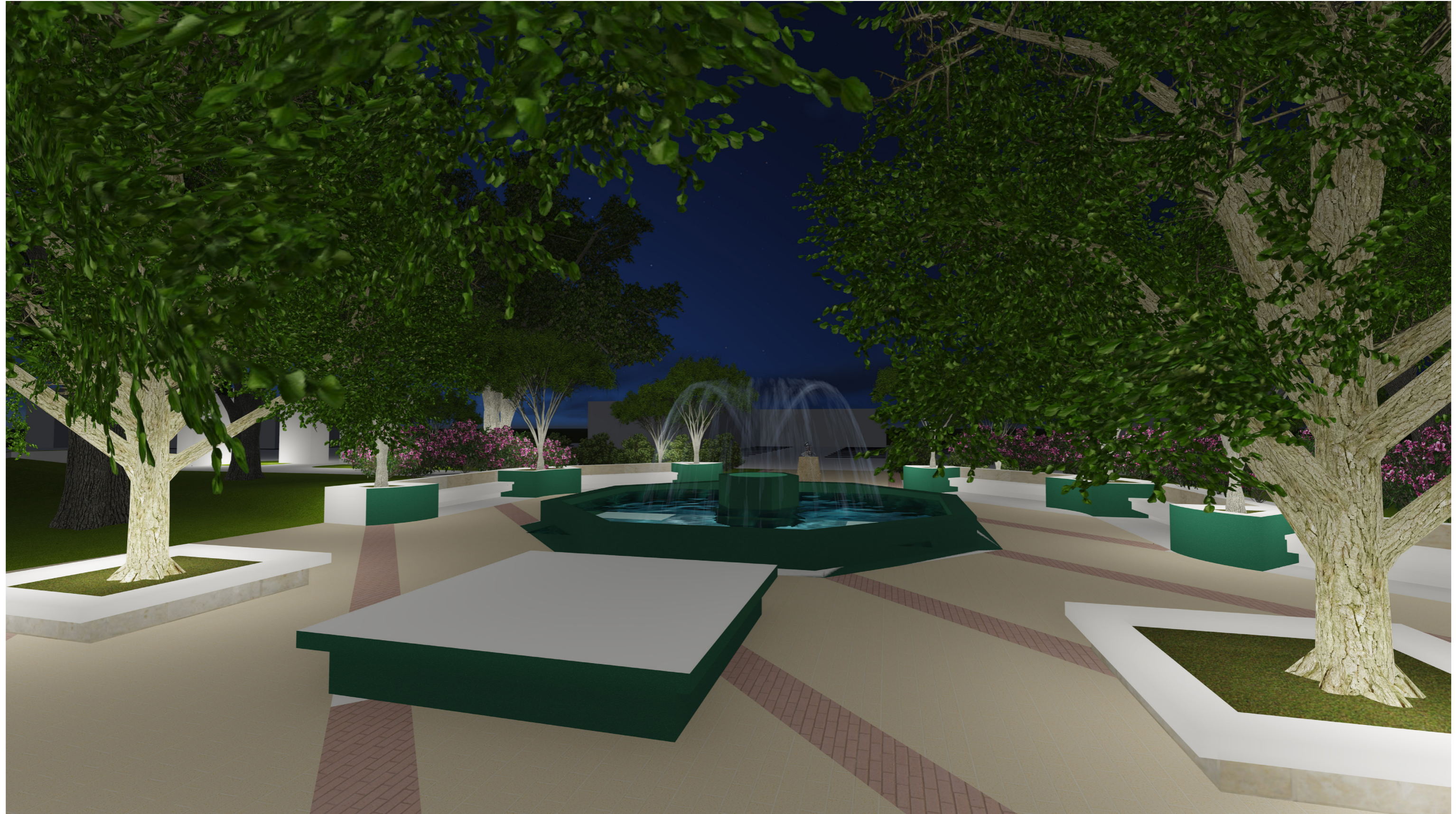


Night View B





Night View C





Plant List



Mexican Buckeye
Ungnadia speciosa



Desert Rose 'Tropic Sun'
Adenium obesum



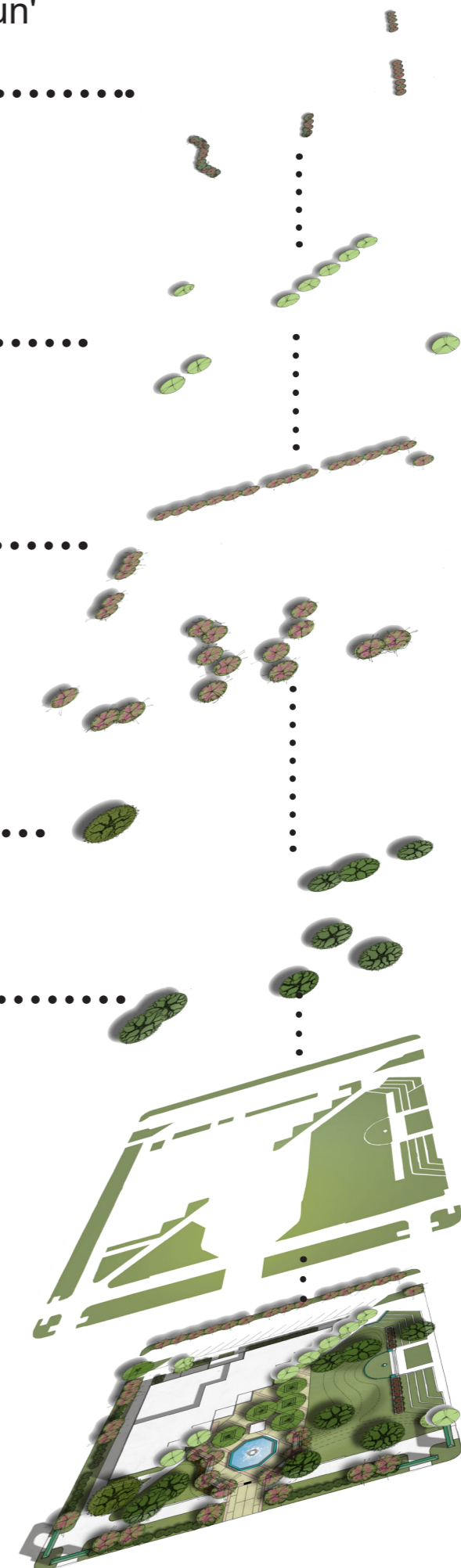
Crape Myrtle
Lagerstroemia indica



Live Oak
Quercus virginiana



Camphor Tree
Cinnamomum camphora



Reference:
<http://texastreed.tamu.edu/content/TreeDetails?id=109>
<http://texastreed.tamu.edu/content/TreeDetails?id=55>
<http://tipsplants.com/community/poisonous-toxic-plants/how-deal-poisonous-adenium-desert-rose>
<http://texastreed.tamu.edu/content/TreeDetails?id=129>