

## Spontaneous Excision of the *Salmonella enterica* Serovar Enteritidis-Specific Defective Prophage-Like Element $\phi$ SE14<sup>∇†</sup>

Carlos A. Santiviago,<sup>1‡\*</sup> Carlos J. Blondel,<sup>1‡</sup> Carolina P. Quezada,<sup>1</sup> Cecilia A. Silva,<sup>1,2</sup> Pia M. Tobar,<sup>1</sup> Steffen Porwollik,<sup>3</sup> Michael McClelland,<sup>3,4</sup> Helene L. Andrews-Polymenis,<sup>5</sup> Cecilia S. Toro,<sup>2</sup> Mercedes Zaldívar,<sup>1</sup> and Inés Contreras<sup>1</sup>

Departamento de Bioquímica y Biología Molecular, Facultad de Ciencias Químicas y Farmacéuticas, Universidad de Chile, Santiago, Chile<sup>1</sup>; Programa de Microbiología y Micología, Instituto de Ciencias Biomédicas, Facultad de Medicina, Universidad de Chile, Santiago, Chile<sup>2</sup>; Vaccine Research Institute of San Diego, San Diego, California 92121<sup>3</sup>; Department of Pathology and Laboratory Medicine, College of Health Sciences, University of California, Irvine, Irvine, California 92697<sup>4</sup>; and Department of Microbial and Molecular Pathogenesis, College of Medicine, Texas A&M University System Health Science Center, 407 Reynolds Medical Building, College Station, Texas 77843<sup>5</sup>

Received 28 February 2009/Accepted 2 February 2010

*Salmonella enterica* serovar Enteritidis has emerged as a major health problem worldwide in the last few decades. DNA loci unique to *S. Enteritidis* can provide markers for detection of this pathogen and may reveal pathogenic mechanisms restricted to this serovar. An *in silico* comparison of 16 *Salmonella* genomic sequences revealed the presence of an ~12.5-kb genomic island (GEI) specific to the sequenced *S. Enteritidis* strain NCTC13349. The GEI is inserted at the 5' end of gene *ydaO* (*SEN1377*), is flanked by 308-bp imperfect direct repeats (*attL* and *attR*), and includes 21 open reading frames (*SEN1378* to *SEN1398*), encoding primarily phage-related proteins. Accordingly, this GEI has been annotated as the defective prophage SE14 in the genome of strain NCTC13349. The genetic structure and location of  $\phi$ SE14 are conserved in 99 of 103 wild-type strains of *S. Enteritidis* studied here, including reference strains NCTC13349 and LK5. Notably, an extra-chromosomal circular form of  $\phi$ SE14 was detected in every strain carrying this island. The presence of *attP* sites in the circular forms detected in NCTC13349 and LK5 was confirmed. In addition, we observed spontaneous loss of a *tetRA*-tagged version of  $\phi$ SE14, leaving an empty *attB* site in the genome of strain NCTC13349. Collectively, these results demonstrate that  $\phi$ SE14 is an unstable genetic element that undergoes spontaneous excision under standard growth conditions. An internal fragment of  $\phi$ SE14 designated Sdf I has been used as a serovar-specific genetic marker in PCR-based detection systems and as a tool to determine *S. Enteritidis* levels in experimental infections. The instability of this region may require a reassessment of its suitability for such applications.

The genus *Salmonella* comprises a heterogeneous group of Gram-negative bacteria, differentiable by biochemical and serological properties. More than 2,500 *Salmonella* serovars have been identified according to the serospecificities of the somatic and flagellar antigens. Some serovars, exemplified by *Salmonella enterica* serovar Typhimurium and *S. Enteritidis*, can infect a broad range of hosts. However, a subset of serovars, such as *S. Typhi*, a human-specific pathogen, show a high degree of adaptation to a specific host.

In the last few decades, *S. Enteritidis* has emerged as a major health problem worldwide (31). This pathogen colonizes the reproductive organs of infected birds without causing discernible illness and survives host defenses during the formation of the egg (25, 27). The production of a capsule-like O antigen

structure by certain wild-type strains of *S. Enteritidis* (30, 46) has been associated with reproductive tract tropism and improved survival within eggs (26, 27, 45). Egg contamination can originate before oviposition by direct contamination of the yolk, albumen, or eggshell membranes with bacteria from the infected reproductive organs of the birds or after or during oviposition by penetration of bacteria from contaminated feces through the eggshell (8, 14, 25). Transmission of the bacterium to humans occurs mainly through the consumption of contaminated eggs or egg products (8, 14, 25). Upon infection of a human host, *S. Enteritidis* causes self-limiting gastroenteritis similar to that caused by other nontyphoidal *Salmonella* serovars.

According to information gathered from 84 countries responding to a global survey conducted by the World Health Organization (WHO), *S. Enteritidis* and *S. Typhimurium* accounted for ~70% of all human and nonhuman isolates of *Salmonella* reported worldwide between 1995 and 2008. In fact, *S. Enteritidis* alone accounted for 61.4% of the ~1.5 million human isolates of *Salmonella* reported during this period, according to the WHO Global Foodborne Infections Network Country Databank (<http://www.who.int/salmsurv/>). Remarkably, *S. Enteritidis* is the second most prevalent cause

\* Corresponding author. Mailing address: Departamento de Bioquímica y Biología Molecular, Facultad de Ciencias Químicas y Farmacéuticas, Universidad de Chile, P.O. Box 174, Correo 22, Santiago, Chile. Phone: (56-2) 978 1658. Fax: (56-2) 222 7900. E-mail: csantiviago@gmail.com.

† Supplemental material for this article may be found at <http://jb.asm.org/>.

‡ These authors contributed equally to this work.

∇ Published ahead of print on 19 February 2010.

of *Salmonella* infection in humans, after *S. Typhimurium*, in the United States (10).

The high global prevalence of *S. Enteritidis* makes the development of a rapid, sensitive, and highly specific detection system critical to collect accurate epidemiologic data. The identification of loci that serve as specific markers for DNA-based identification of this pathogen may also provide insights into pathogenic mechanisms restricted to this serovar. Genomic regions that are unique to given serovars are especially suitable for such epidemiologic detection (3). For instance, Agron and colleagues identified an *S. Enteritidis*-specific genomic region of ~4,060 bp adjacent to the *ylaO* gene, carrying six open reading frames (ORFs) that they designated *lygA* to *lygF* (1). A PCR-based assay successfully detected the presence of an internal fragment of this serovar-specific region in most strains in a diverse collection of clinical and environmental *S. Enteritidis* isolates and not in 73 non-*Enteritidis* isolates of *S. enterica* representing 34 different serovars (1). Since then, this region has been widely used as an *S. Enteritidis*-specific molecular marker in the development of several PCR-based assays for detection and epidemiological typing of *Salmonella* serovars in clinical and environmental samples (2, 11, 32, 37, 44, 53). Recently, an *S. Enteritidis*-specific real-time quantitative PCR (qPCR) assay based on the detection of this region was developed (15). This qPCR assay has been used in a series of studies of the distribution and replication kinetics of *S. Enteritidis* in experimentally infected animals (16–21).

We performed a bioinformatic study to identify genomic regions specific to *S. Enteritidis* and found a genomic island (GEI) that includes the *S. Enteritidis*-specific locus *lyg* (1). This island has been annotated as the defective prophage SE14 in the genome of *S. Enteritidis* strain NCTC13349 (52). Although we demonstrate that the location in the genome and the overall genetic structure of the island are conserved in wild-type isolates of *S. Enteritidis* from different origins, we detected strains that do not carry the island in their genomes. Finally, we demonstrate here that the island corresponds to an unstable element that undergoes spontaneous excision from the genome of *S. Enteritidis* under standard growth conditions.

## MATERIALS AND METHODS

**Bacterial strains, media, and growth conditions.** The bacterial strains used in the present study are listed in Table S1 in the supplemental material. Our analysis included 50 clinical strains of *S. Enteritidis* isolated in Santiago, Chile, and obtained from our laboratory collection and 33 strains of *S. Enteritidis* isolated from poultry and related products and obtained from Servicio Agrícola y Ganadero (SAG), Chile. These strains were confirmed to be *S. enterica* serovar *Enteritidis* by standard microbiological, biochemical, and serological methods. Bacteria were routinely grown in Luria-Bertani (LB) medium (10 g/liter tryptone, 5 g/liter yeast extract, 5 g/liter NaCl) at 37°C with aeration. LB medium was supplemented with ampicillin (Amp; 100 mg/liter), chloramphenicol (Cam; 20 mg/liter), kanamycin (Kan; 50 mg/liter), tetracycline (Tet; 10 mg/liter), trimethoprim (Tmp; 100 mg/liter), or 5-bromo-4-chloro-3-indolyl- $\beta$ -D-galactopyranoside (X-Gal; 50 mg/liter) as appropriate. Minimal medium [5 mM KCl, 7.5 mM (NH<sub>4</sub>)<sub>2</sub>SO<sub>4</sub>, 0.5 mM K<sub>2</sub>SO<sub>4</sub>, 1 mM KH<sub>2</sub>PO<sub>4</sub>, 0.1 mM Tris-HCl (pH 7.4), 10 mM MgCl<sub>2</sub>] was supplemented with 0.2% (vol/vol) glycerol and 0.1% (wt/vol) Casamino Acids. Media were solidified by the addition of agar (15 g/liter).

**Standard DNA techniques.** Total genomic DNA was obtained from fresh overnight cultures using the GenElute bacterial genomic DNA kit according to the instructions of the manufacturer (Sigma) and eluted with 1 mM Tris-HCl, pH 8.5, buffer. Plasmid DNA was obtained from fresh overnight cultures using the QIAprep spin miniprep kit (Qiagen) and eluted with the above-mentioned buffer. PCR products for cloning or sequencing were purified using the QIA-

quick PCR purification kit as recommended by the manufacturer (Qiagen). Restriction digestion using endonuclease HincII (Fermentas) and ligation using T4 DNA ligase (NEB) were conducted as recommended by the manufacturers. DNA samples were routinely analyzed by electrophoresis in 1% agarose gels (with 0.5 $\times$  Tris-acetate-EDTA buffer) and visualized under UV light after ethidium bromide staining.

**Bioinformatic identification of GEIs in *S. Enteritidis*.** The highest-percentage hit for any 100-bp window within each ORF has been used previously as a convenient metric to compare *Salmonella* genomes to one another and to those of members of the nearest genus, *Escherichia* (41, 49). This tool was applied to each annotated ORF in the genome sequence of *S. Enteritidis* NCTC13349, which was compared to genomic sequences of 15 other *Salmonella* strains (including *S. enterica* subsp. I serovar *Typhimurium* isolates LT2, SL1344, DT104, and 14028, serovar *Typhi* isolates Ty2 and CT18, serovar *Paratyphi A* SARB42, serovar *Paratyphi B* SPB7, serovar *Paratyphi C* RKS4594, serovar *Gallinarum* 281/91, serovar *Dublin* CT02021853, and serovar *Choleraesuis* SC-B67; *S. enterica* subsp. *arizonae* [subsp. IIIa] CDC346-86; *S. enterica* subsp. *diarizonae* [subsp. IIIb] CDC01-0005; and *Salmonella bongori* isolate 12419). An ORF was considered to be present in the analyzed genome if the best recorded hit for any internal 100-bp window showed 95 to 100% identity. This threshold was based on the observation that over 95% of syntenic reciprocal best hits have over 95% identity in their best 100-bp window of identity (41) (data not shown). ORFs were considered to be absent from the analyzed genome if the best recorded hit displayed less than 85% identity. This threshold was chosen based on the observation that syntenic reciprocal best hits in comparisons between *Salmonella* and the nearest other genus, *Escherichia*, average more than 85% identity in their best 100-base window of identity (41) (data not shown). *S. Enteritidis* NCTC13349 ORFs that were absent from any of the 15 compared genomes were designated *S. Enteritidis* specific.

**PCR amplification.** Primers for PCR amplification were designed based on the reported sequence of *S. Enteritidis* PT4 strain NCTC13349 (52) (see Table S2 in the supplemental material) by using Vector NTI Advance 9.0 software. PCR amplifications were performed using a MultiGene TC9600-G thermal cycler (Labnet) and GoTaq Flexi DNA polymerase (Promega) in a standard volume of 20  $\mu$ l. Reaction mixes contained 1 $\times$  buffer, 2 mM MgCl<sub>2</sub>, 200  $\mu$ M (each) deoxynucleoside triphosphates, 200 nM (each) primers, 0.5  $\mu$ l of template DNA (50 to 100 ng), and 0.5 U of DNA polymerase. Standard conditions for amplification were 3 min at 94°C, 30 cycles of incubation at 94°C for 30 s, 55°C for 30 s, and 72°C for 2 min, and a final extension step at 72°C for 5 min. Conditions for tiling-PCR amplification were 3 min at 94°C, 30 cycles of incubation at 94°C for 30 s, 58°C for 30 s, and 72°C for 4 min, and a final extension step at 72°C for 7 min. Conditions for inverse and nested PCR amplification were 3 min at 94°C, 30 cycles of incubation at 94°C for 30 s, 58°C for 30 s, and 72°C for 1 min, and a final extension step at 72°C for 5 min. One microliter of a 1/100 dilution of the inverse PCR amplification mixture was used as template for the nested PCR amplification.

**Mutant construction and analyses.** Mutant strains with specific deletions and concomitant insertions of a Kan, Cam, or Tet resistance cassette were constructed using the lambda Red recombination method (13). PCR primers 60 bases long were synthesized with 40 nucleotides (nt) on the 5' ends corresponding to the ends of the desired deletions (see Table S2 in the supplemental material). In the case of mutants with deletions of gene *SEN1378*, the  $\phi$ SE14 *attR* site, or most of the island (genes *SEN1379* to *SEN1396A*), the 3' 20 nt of each primer was annealed to the 5' or 3' end of an antibiotic resistance cassette flanked by the FLP recombination target (FRT) sites present in plasmids pCLF2 and pCLF3 (Cam resistance), and pCLF4 (Kan resistance). In the case of mutants with deletions of genes *SEN1385* to *SEN1387* (i.e.,  $\phi$ SE14::*tetRA* mutants), the 3' 20 nt of each primer was annealed to the 5' or 3' end of a *tetRA* cassette from a T-POP insertion in the chromosome of *S. Typhi* SAS0137 (see Table S1 in the supplemental material). PCR amplifications were carried out under standard conditions using primers described in Table S2 in the supplemental material. *S. Enteritidis* strain NCTC13349 containing the plasmid pKD46 was grown to an optical density at 600 nm (OD<sub>600</sub>) of 0.5 at 30°C in LB medium containing Amp and L-arabinose (10 mM). Bacteria were made electrocompetent by sequential washes with ice-cold sterile 10% glycerol (42) and transformed with approximately 500 ng of each purified PCR product. Transformants were selected on LB agar plates containing Kan, Cam, or Tet at 37°C. The presence of each mutation was confirmed by PCR amplification using primers flanking the sites of substitution.

To generate a nonpolar in-frame deletion of gene *SEN1378*, leaving an intact copy of the  $\phi$ SE14 *attL* site, the  $\Delta$ *SEN1378*::*kan* mutant was transformed with the temperature-sensitive plasmid pCP20, which synthesizes the FLP recombinase (12, 13). Transformants were selected at 30°C on LB agar plates containing

Amp. A few colonies were streaked two times onto LB agar plates at 37°C and tested for the loss of the antibiotic resistance cassettes by being patched onto LB agar plates containing Kan and Amp. The presence of the  $\Delta$ SEN1378::FRT mutant allele was confirmed by PCR amplification using primers flanking the sites of substitution. The same overall procedure was followed to generate a  $\Delta$ (SEN1379-SEN1396A)::FRT derivative of the  $\Delta$ (SEN1379-SEN1396A)::kan mutant.

To generate *recA* derivatives of NCTC13349, the mutant allele *recA1* was cotransduced with the *srl-203*::Tn10dCam (Cam<sup>r</sup>)- or *srl-202*::Tn10 (Tet<sup>r</sup>)-linked allele from *S. Typhimurium* donor strain MST1531 or MST1801 (see Table S1 in the supplemental material) by using the high-frequency transducing phage P22 HT105/1 *int-201* as described previously (39). Transductants were selected at 37°C on LB agar plates containing Cam or Tet and screened for sensitivity to UV light.

**Cloning of genes SEN1396A and SEN1398 and complementation of  $\Delta$ attR mutants.** Primers ISE-Y13(F) and ISE-Y14(R) were used to amplify a 476-bp fragment of the NCTC13349 genome including genes *SEN1396A* and *SEN1398* and the 3' end of gene *SEN1399*. The PCR product was purified and ligated to plasmid vector pGEM-T Easy (Promega). *Escherichia coli* DH5 $\alpha$  was transformed with the ligation mix, and transformants were selected on LB agar plates containing Amp and X-Gal. Plasmid DNA from several independent transformants was prepared, and the presence of the insert in each plasmid was confirmed by PCR amplification using primers T7 and SP6, flanking the cloning site in pGEM-T Easy. The orientation of the inserts was determined by PCR amplification using primer combinations ISE-Y13(F) plus SP6 and ISE-Y14(R) plus SP6. Plasmids having the insert cloned in each orientation into pGEM-T Easy were used to transform  $\Delta$ attR derivatives of strain NCTC13349 in complementation assays for  $\phi$ SE14 excision.

**Selection for spontaneous mutants missing  $\phi$ SE14.** Three independent NCTC13349  $\phi$ SE14::tetRA clones were grown overnight in LB medium at 37°C with aeration. Each culture was serially diluted in sterile phosphate-buffered saline (PBS), and aliquots (5 to 10  $\mu$ l) of the dilutions were plated onto LB agar plates and incubated overnight at 37°C to determine the number of CFU per milliliter of culture. From cultures suitably diluted in PBS, aliquots of 100  $\mu$ l having  $\sim 10^6$  CFU were plated onto freshly made Bochner-Maloy medium (5 g/liter tryptone, 5 g/liter yeast extract, 10 g/liter NaCl, 10 g/liter NaH<sub>2</sub>PO<sub>4</sub> · H<sub>2</sub>O, 50 mg/liter chlortetracycline hydrochloride, 12 mg/liter fusaric acid, 0.1 mM ZnCl<sub>2</sub>, 15 g/liter agar) (40). After 48 h of incubation at 37°C, colonies from the Bochner-Maloy plates were patched onto LB agar, replica plated onto LB agar containing tetracycline, and incubated overnight at 37°C. Each confirmed Tet<sup>r</sup> derivative was tested for the presence of  $\phi$ SE14 by PCR-based detection of (i) each of four defined fragments of the element, (ii) the extrachromosomal circular form (CF), and (iii) the empty *attB* site left in the chromosome after the excision. The frequency of spontaneous excision and loss of  $\phi$ SE14 for each of the three independent NCTC13349  $\phi$ SE14::tetRA clones was calculated as the total number of Tet<sup>r</sup> CFU confirmed to have lost the island after selection on Bochner-Maloy plates, divided by the total number of CFU plated.

**DNA sequence analyses of attB and attP sites postexcision.** PCR amplification products obtained from strains NCTC13349, LK5, MZ743, and MZ745 and three spontaneous mutants lacking  $\phi$ SE14 by using primers ISE-Y1(F) and ISE-Y8(R) and from strains NCTC13349 and LK5 by using primers ISE-Y11(F) and ISE-Y12(R) were purified and ligated to plasmid vector pGEM-T Easy. *E. coli* DH5 $\alpha$  was transformed with the ligation mixes by electroporation, and transformants were selected on LB agar plates supplemented with Amp and X-Gal. Plasmid DNA was isolated from two independent clones from each transformation, and the double-stranded sequence of the cloned insert in each plasmid was determined by MacroGen(Korea) using primers T7 and SP6, flanking the cloning site in pGEM-T Easy.

**Animal studies with BALB/c mice.** An Amp<sup>r</sup> derivative of mutant strain NCTC13349  $\Delta$ (SEN1379-SEN1396A)::FRT was tested for virulence in mixed infections with a Tmp<sup>r</sup> derivative of wild-type strain NCTC13349 to determine the competitive index (CI) in BALB/c mice after intraperitoneal infection. Strains used for infection were grown overnight at 37°C with aeration, mixed in a 1:1 ratio, and serially diluted in sterile PBS to the appropriate concentration for inoculation. Aliquots of the dilutions were plated onto LB medium-Tmp agar plates (for wild-type CFU) and LB medium-Amp agar plates (for mutant CFU) to determine the exact titers and ratios of strains inoculated. Groups of five BALB/c mice (8- to 10-week-old females) were inoculated intraperitoneally with  $\sim 10^6$  CFU from the mutant and wild-type strain mixture in 100  $\mu$ l of PBS. Mice were humanely euthanized at 48 h postinfection, and the spleens and livers were removed and homogenized in 3 ml of ice-cold sterile PBS. Each organ homogenate was serially diluted, and aliquots of the dilutions were plated onto LB medium-Tmp and LB medium-Amp agar plates to determine the exact ratio of

strains recovered. CIs were calculated as the ratio of mutant to wild-type CFU inoculated, divided by the ratio of mutant to wild-type CFU recovered from each organ.

## RESULTS

**Bioinformatic identification of an *S. Enteritidis*-specific GEI.** In order to identify genes and GEIs specific to *S. Enteritidis*, we performed an *in silico* comparison of the genome sequences available in public databases for 16 strains of *Salmonella*. Our study included data from sequenced strains of *S. bongori*, *S. enterica* subsp. *enterica* serovars Typhimurium, Typhi, Paratyphi A, Paratyphi B, Paratyphi C, Gallinarum, Enteritidis, Dublin, and Choleraesuis, *S. enterica* subsp. *diarizonae*, and *S. enterica* subsp. *arizonae*.

Our analysis revealed the presence of an  $\sim 12.5$ -kb segment in the genome of the sequenced *S. Enteritidis* PT4 strain NCTC13349 that is absent in 14 of the other genomes studied. The only exception was the genome of *S. Typhi* strain CT18, which carried an internal fragment of this island presenting extensive sequence identity to prophage ST18 (Table 1). This GEI is inserted at the 5' end of gene *SEN1377* (also named *ydaO* or *ttcA*) in the genome of NCTC13349 and includes 21 ORFs (*SEN1378* to *SEN1398*) (Fig. 1), most of which encode proteins of phage origin (Table 1). Notably, this GEI is flanked by relatively long, imperfect direct repeats (DR) of 308 bp (referred to as *attL* and *attR*) presenting six mismatches (see Fig. S2 in the supplemental material). Two ORFs in the GEI (*SEN1378* and *SEN1398*) encode small putative proteins identical to the C-terminal end of the integrase encoded by the Rac prophage and related prophages in *E. coli* strains. Although *SEN1378* and *SEN1398* are likely to be pseudogenes, the presence of long *attL* and *attR* sites suggested that this GEI may be excised from the chromosome under certain conditions.

In agreement with our *in silico* analysis, the 5' end of the GEI we identified corresponds to the *S. Enteritidis*-specific locus *hyg* identified by Agron and colleagues (1). Recently, this GEI has been described as the prophage-like element  $\phi$ SE14 in the genome of *S. Enteritidis* strain NCTC13349 (coordinates 1469312 to 1482032), and this element was reported to be absent from the genomes of *S. Typhimurium* strain LT2 and *S. Gallinarum* strain 287/91 (52).

**Genetic organization of  $\phi$ SE14 in wild-type strains of *S. Enteritidis*.** A set of eight primers based on the reported sequence of strain NCTC13349 was designed to study the genetic structure of  $\phi$ SE14 in *S. Enteritidis* strains by tiling-PCR. The primers were designed to amplify four fragments (2.9 to 3.5 kb) of the island with overlapping sequences of  $\sim 100$  to 150 bp (Fig. 1; see also Table S2 in the supplemental material). Two of the primers used, ISE-Y1(F) and ISE-Y8(R), are external to  $\phi$ SE14 (flanking *attR* and *attL*, respectively) so that we could confirm the locations of the island in the genomes of the isolates studied. Generation of an  $\sim 700$ -bp PCR product using these external primers indicates the absence of  $\phi$ SE14 at the location corresponding to the position of this genetic element in strain NCTC13349.

Initially, PCR amplifications were performed to detect the defined fragments of  $\phi$ SE14 in the genomes of *S. Enteritidis* (NCTC13349 and LK5), *S. Typhimurium* (LT2, SL1344, and ATCC 14028), and *S. Typhi* (Ty2, CT18, SARB63, and

TABLE 1. Genes and gene products of  $\phi$ SE14 in *S. enterica* serovar Enteritidis NCTC13349

Gene	Alternative name(s)	Coordinates <sup>a</sup>	Product size (aa) <sup>d</sup>	Predicted functional identification and/or description of product	Homolog encoded in <i>S. Typhi</i> strain CT18 (% identity to gene product)
<i>SEN1377<sup>b</sup></i>	<i>ydaO, ttcA</i>	1468428–1469363 (complement)	311	C32 tRNA thiolase (enzyme for thiolation of cytidine in position 32 of tRNA) <sup>e</sup>	
<i>SEN1378<sup>c</sup></i>	<i>int</i>	1469415–1469696 (complement)	93	Putative integrase (identical to portion of Rac prophage integrase); truncated protein	
<i>SEN1379<sup>c</sup></i>	<i>lygA</i>	1469680–1470303 (complement)	207	Putative phage-encoded exodeoxyribonuclease VIII; truncated version of RecE	
<i>SEN1380</i>	<i>lygB</i>	1470325–1470642 (complement)	105	Predicted phage protein with unknown function	
<i>SEN1381</i>	<i>kil</i>	1470727–1470948 (complement)	73	Putative FtsZ inhibitor protein Kil (analogous to Rac prophage protein); cell division inhibitor	
<i>SEN1382</i>	<i>lygC</i>	1471371–1471907	178	Putative membrane protein related to phage superinfection exclusion proteins	
<i>SEN1383</i>	<i>lygD</i>	1472555–1473022 (complement)	155	Putative DNA binding protein belonging to the xenobiotic response element (XRE) family of transcriptional regulators	
<i>SEN1384</i>	<i>lygF</i>	1473295–1473624	109	Putative phage-encoded DNA binding protein	
<i>SEN1385</i>		1473786–1474340 (complement)	184	Putative phage-encoded membrane protein with unknown function	Putative protein STY2058 (99)
<i>SEN1386</i>		1474337–1475269 (complement)	310	Predicted phage protein with unknown function	Putative protein STY2057 (95)
<i>SEN1387</i>	<i>hok, mok</i>	1475639–1475851	70	Putative small toxic protein in the Hok/Gef family of prophage maintenance proteins	Putative protein STY2054 (92)
<i>SEN1388</i>		1476127–1476312	61	Predicted phage protein with unknown function	
<i>SEN1389</i>		1476375–1476974	199	Hypothetical protein with unknown function	Putative protein STY2052 (87)
<i>SEN1390</i>		1476974–1477264	96	Putative phage protein with unknown function	Putative protein STY2051 (85)
<i>SEN1391</i>		1477141–1477797	218	Putative phage antitermination protein	Putative protein STY2050 (80)
<i>SEN1392</i>		1479296–1479544	82	Predicted phage protein with unknown function	
<i>SEN1393</i>		1479968–1480363	131	Putative phage protein homologous to plasmid and bacterial tellurite and colicin resistance determinants TerB and its homologs	
<i>SEN1394</i>		1480457–1480744	95	Putative prophage holin protein	
<i>SEN1395</i>		1480741–1481286	181	Predicted lysozyme protein	
<i>SEN1396</i>		1481283–1481492	69	Putative phage-encoded exported protein with unknown function	
<i>SEN1396A<sup>c</sup></i>	<i>ydaO', ttcA'</i>	1481723–1481776 (complement)	17	C32 tRNA thiolase (enzyme for thiolation of cytidine in position 32 of tRNA); truncated protein	
<i>SEN1398<sup>c</sup></i>	<i>int</i>	1481828–1481968 (complement)	46	Putative integrase (identical to portion of Rac prophage integrase); truncated protein	

<sup>a</sup> Coordinates are those of the *S. Enteritidis* NCTC13349 sequence (EMBL accession number AM933172).

<sup>b</sup>  $\phi$ SE14 carries 21 annotated genes (*SEN1378* to *SEN1398*) in the genome of *S. Enteritidis* NCTC13349. The features of the neighboring gene *SEN1377* (also called *ydaO* or *ttcA*) are included as a reference.

<sup>c</sup> Predicted pseudogene.

<sup>d</sup> aa, amino acids.

<sup>e</sup> Data are from reference 36.

SARB64) reference strains. Each fragment was detected in both *S. Enteritidis* strains, and none of them were detected in strains of *S. Typhimurium* and *S. Typhi* (data not shown). However, a strong PCR product of ~700 bp from the three *S. Typhimurium* strains tested was obtained using the external primers ISE-Y1(F) and ISE-Y8(R), confirming the absence of  $\phi$ SE14 in these *S. Typhimurium* genomes. Furthermore, a specific product of ~3 kb was obtained from the four *S. Typhi* strains we tested, reflecting the presence of an insert of ~2.4 kb upstream of gene *ydaO* in these *S. Typhi* genomes, which confirms observations in previous reports of the sequences of CT18 and Ty2 strains (22, 47). In addition, a faint PCR product of ~700 bp was obtained from both reference strains of *S. Enteritidis* (see below).

The four fragments of  $\phi$ SE14 were detected in 97 of 101 isolates in a collection of wild-type *S. Enteritidis* strains obtained from humans, rodents, birds, and poultry-related products (Fig. S2 in the supplemental material shows representative amplification data from a limited number of strains). Notably, the faint amplification product of ~700 bp was also obtained from these 97 strains when PCR analyses were performed using primers external to  $\phi$ SE14. No fragment of the island was detected in the remaining four strains, all of which generated a strong PCR product of ~700 bp with the external primers, confirming the absence of  $\phi$ SE14 in these genomes (see Fig. S2 in the supplemental material). In fact, in a previous study of differences in gene content among *S. Enteritidis* isolates using comparative genomic hybridizations (50), these

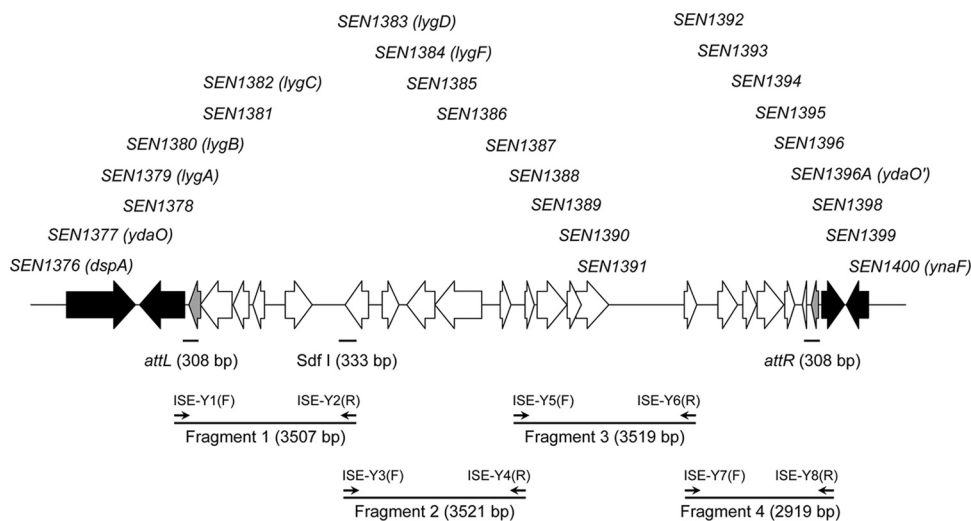


FIG. 1. Schematic representation of  $\phi$ SE14 from *S. Enteritidis* strain NCTC13349. White arrows represent genes carried in the island, and black arrows represent neighboring genes in the chromosome of NCTC13349. Gray arrows indicate integrase genes. The positions of the DR (*attL* and *attR*) flanking the island and of the internal fragment *Sdf I* are indicated. The locations of primers designed to amplify four fragments of the island by tiling-PCR are shown.

strains (MZ743, MZ745, SARB17, and SARB18) showed no hybridization signals with any of the probes representing genes carried by  $\phi$ SE14.

The PCR products obtained for the four fragments of  $\phi$ SE14 from the 99 strains (including NCTC13349 and LK5) carrying the island were subjected to restriction fragment length polymorphism (RFLP) analysis using the restriction endonuclease *HincII*. Theoretically, the fragments presented three to four *HincII* sites in their sequences. After digestion, each fragment generated a unique RFLP pattern, and each set of corresponding fragments from the 99 strains tested had identical patterns (data not shown). These results indicate that there are no detectable differences in the genetic structure and the genome location of  $\phi$ SE14 in *S. Enteritidis* strains. Thus, the entire prophage-like element is either present or absent in the genomes of the *S. Enteritidis* strains studied, regardless of the source of isolation.

**Detection of circular excision products of  $\phi$ SE14 and an empty chromosomal *attB* site in strains of *S. Enteritidis*.** The PCR products obtained from strains NCTC13349, LK5, MZ743, and MZ745 using external primers ISE-Y1(F) and ISE-Y8(R) were cloned, and the sequences of two independent clones from each strain were determined. The analysis of the sequence data revealed the presence of an empty *attB* site in the genomes of the strains analyzed. In all cases, 308-bp-long sites containing variable moieties of *attL* and *attR* at the 5' and 3' ends of *attB*, respectively, were detected (see Fig. S2A in the supplemental material). The *attB* sequences obtained from both clones of MZ743 were identical. The same was true for the *attB* sequences from both clones of MZ745, reflecting the unique recombination event that led to the excision of  $\phi$ SE14 in each strain. On the other hand, the *attB* sequences obtained from each pair of clones from NCTC13349 and LK5 were different (see Fig. S2A in the supplemental material), reflecting different events of excision by crossover occurring at different locations during the recombination between *attL* and

*attR* sites in the bacterial populations. Collectively, these results strongly suggest that  $\phi$ SE14 undergoes spontaneous excision from the genome by recombination between the flanking *attL* and *attR* sites. If this is true, the recombination event must lead to the formation of an extrachromosomal CF of the island.

To test this hypothesis, an inverse PCR amplification approach was implemented. Primers ISE-Y9(F) and ISE-Y10(R) (see Table S2 in the supplemental material) were designed to generate a 927-bp PCR product only if a CF was formed after the excision of  $\phi$ SE14 (Fig. 2A). A second primer pair was designed to confirm the presence of the CF by nested PCR (see Table S2 in the supplemental material). Thus, primers ISE-Y11(F) and ISE-Y12(R) amplify a 581-bp fragment internal to the product of the first inverse PCR assay. As shown in Fig. 2B, both the inverse and nested PCR amplification assays gave products of the expected sizes from strains NCTC13349 and LK5, indicating the presence of a CF of  $\phi$ SE14 in both genetic backgrounds. This finding was observed for every *S. Enteritidis* strain carrying the island that we tested (data not shown). No amplification products were obtained from *S. Typhimurium* LT2 and *S. Enteritidis* strains MZ743 and MZ745, none of which carry  $\phi$ SE14 in their genomes.

PCR products obtained from strains NCTC13349 and LK5 by using inverse primers ISE-Y11(F) and ISE-Y12(R) were cloned, and the sequences of two independent clones from each strain were determined. In each case, the analysis of the sequence data confirmed the presence of 308-bp-long *attP* sites containing variable moieties of *attR* and *attL* (see Fig. S2B in the supplemental material). The sequences obtained from each pair of clones from NCTC13349 and LK5 were different, revealing different excision events occurring in the bacterial populations sampled by the inverse PCR. These results strongly suggest that  $\phi$ SE14 excision leads to the generation of a circular intermediate. This intermediate was also detected when DNA from samples of NCTC13349 cultures in LB or N min-

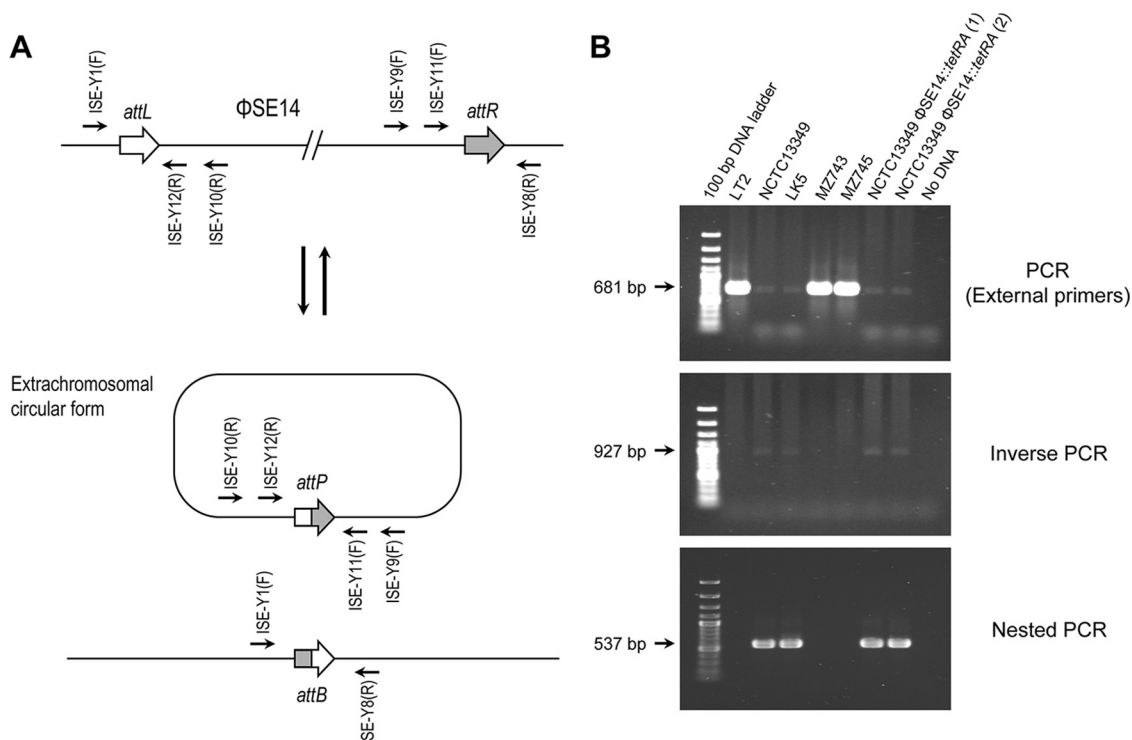


FIG. 2. The excision of  $\phi$ SE14 generates an extrachromosomal CF of the island. (A) Schematic representation of the excision event showing the locations of primers designed for the detection of the extrachromosomal element. (B) Detection of an extrachromosomal CF of  $\phi$ SE14 in *S. Enteritidis* strains. The PCR assays were performed as described in Materials and Methods by using primers ISE-Y1(F) and ISE-Y8(R) for external PCR, ISE-Y9(F) and ISE-Y10(R) for inverse PCR, and ISE-Y11(F) and ISE-Y12(R) for nested PCR. The sequence of each primer can be found in Table S2 in the supplemental material. Two independent clones harboring a *tetRA*-tagged version of  $\phi$ SE14 in the NCTC13349 background ( $\phi$ SE14::*tetRA*) were included in the analysis.

imal medium collected throughout the growth phase was used as a template in the nested PCR assay (data not shown), indicating that the excision event occurs throughout the growth curve under different culture conditions.

**Spontaneous excision of  $\phi$ SE14 in NCTC13349.** The Tn10-carried *tetRA* genes that encode resistance to tetracycline have been shown previously to confer sensitivity to fusaric acid, and this property can be used to select for the loss of the Tn10 marker (5). A modified Bochner medium (40) was used to select for mutant strains that had lost a *tetRA*-tagged version of  $\phi$ SE14 from their genomes. Derivatives of strain NCTC13349 with targeted substitutions of a *tetRA* cassette for genes *SEN1385* to *SEN1387* were constructed. The substitution was designed to keep the *attL* and *attR* sites of  $\phi$ SE14 at the same distance at which they exist in the NCTC13349 genome. As shown in Fig. 2B, the CF of  $\phi$ SE14 was detected in this genetic background using both the inverse and the nested PCR assays, indicating that the replacement of genes *SEN1385* to *SEN1387* by the *tetRA* cassette does not affect the excision of  $\phi$ SE14.

By using the modified Bochner medium, 24 Tet<sup>s</sup> clones from NCTC13349  $\phi$ SE14::*tetRA* were selected. The absence of the island in only three of these clones was confirmed by PCR. Thus, spontaneous excision and loss of the *tetRA*-tagged version of  $\phi$ SE14 in NCTC13349 occurred at a frequency of  $\sim 10^{-6}$ . In addition, a strong amplification product of  $\sim 700$  bp obtained from each of these three clones by using primers external to  $\phi$ SE14 was cloned and sequenced. The analysis of

the sequence data confirmed the presence of an empty *attB* site in the genomes of the three strains analyzed (see Fig. S2C in the supplemental material). The *attB* sequences obtained from the clones were different, indicating that unique recombination events led to the excision of  $\phi$ SE14 in each strain. These results further confirmed that  $\phi$ SE14 excision occurs spontaneously in *S. Enteritidis* during growth under standard conditions.

**Roles of *SEN1378*, *SEN1398*, *attR*, and *RecA* in  $\phi$ SE14 excision.** Derivatives of wild-type strain NCTC13349 were constructed with specific deletions of the *SEN1378* gene, leaving an intact copy of the *attL* site in the genome. The CF of  $\phi$ SE14 was readily detected in these  $\Delta$ *SEN1378* mutants by using both the inverse and the nested PCR assays (see Fig. S3 in the supplemental material), indicating that *SEN1378* is not required for  $\phi$ SE14 excision. Targeted deletions of a 283-bp internal fragment of *attR* (containing genes *SEN1396A* and *SEN1398*) were then constructed in the NCTC13349 genetic backgrounds. Both the inverse and the nested PCR assays failed to detect the CF in these  $\Delta$ *attR* derivatives (see Fig. S4 in the supplemental material). This pattern was also observed when one of the  $\Delta$ *attR* mutants was complemented in *trans* with a high-copy-number plasmid carrying genes *SEN1396A* and *SEN1398* (data not shown). These results indicate that the integrity of the *attR* site is essential for the excision of  $\phi$ SE14 and that genes *SEN1396A* and *SEN1398* are dispensable for the excision process. The fact that *SEN1378* and *SEN1398* are dispensable for the excision event is consistent with their de-

scription as pseudogenes (Table 1). Finally, to determine if RecA plays any role in the excision of  $\phi$ SE14, *recA1* mutant derivatives of strain NCTC13349 were constructed and the presence of the CF was determined. The parental strain and the *recA1* mutant derivatives produced a CF that was readily detected by our inverse and nested PCR assays (see Fig. S5 in the supplemental material), indicating that RecA recombinase is not required for the excision of  $\phi$ SE14.

**Impact of  $\phi$ SE14 absence on the virulence of *S. Enteritidis* in mice.** To evaluate the role played by  $\phi$ SE14 in the pathobiology of *S. Enteritidis*, a derivative of strain NCTC13349 with an internal deletion of most of the island (genes *SEN1379* to *SEN1397*) was generated. This mutant was tested for its ability to compete with the parental wild-type strain for organ colonization in *Salmonella*-susceptible BALB/c mice at 2 days postinfection. Notably, the mutant was capable of colonizing the liver (CI  $\pm$  standard error of the mean [SEM] = 1.251  $\pm$  0.1628) and spleen (CI  $\pm$  SEM = 1.311  $\pm$  0.1171) as efficiently as strain NCTC13349. Accordingly, data from a global screening of *S. Enteritidis* mutants under negative selection *in vivo* indicated that no gene carried in  $\phi$ SE14 is required for short-term colonization of BALB/c mice infected by the intraperitoneal route with a complex mixture of transposon insertion mutants in the NCTC13349 genetic background (C. A. Silva and C. A. Santiviago, unpublished data). Overall, these results indicate that the presence of  $\phi$ SE14 is dispensable for systemic colonization in our murine model of infection.

## DISCUSSION

In this work, a serovar-specific GEI in the genome of *S. Enteritidis* was identified. Bioinformatic analyses revealed that this GEI carries mostly genes showing extensive homology to phage-related genes (Table 1). This genetic element has been annotated as the prophage SE14 in the genome of *S. Enteritidis* strain NCTC13349 (52), despite the fact that it carries no phage structural gene. Although we prefer to define this element as a GEI so as not to presuppose its function, we retained the  $\phi$ SE14 designation that has been given to this region previously (52).

We demonstrate here that  $\phi$ SE14 is an unstable genetic element that undergoes spontaneous excision from the genome under standard growth conditions. The excision of  $\phi$ SE14 was detected in a subpopulation of every strain carrying this island. Interestingly, the presence of *S. Enteritidis* subpopulations has been reported to play important roles in the adaptation of the bacterium to different niches, including animal hosts (26–29, 35). Thus, it is possible that somatic instability of a subset of the population is a feature that is exploited to improve the survival of the wild-type bacterium.

Excision of  $\phi$ SE14 occurs through recombination between the 308-bp-long *attL* and *attR* DR flanking the island. Evidence of different excision events occurring in the populations of individual tested strains revealed that recombination takes place at different locations in these imperfect DR. The presence of unusually long *attL* and *attR* sites argues against an illegitimate recombination event and supports homologous or specific recombination as the mechanism responsible for excision of this element. Homologous recombination between flanking large repeats in the chromosome occurs normally by

the action of RecA and a set of alternative pathways. Although RecA is not required for  $\phi$ SE14 excision, we cannot eliminate the possible participation of alternative homologous recombination pathways that are known to participate in the excision of other genetic elements (33, 38). In addition,  $\phi$ SE14 harbors two genes (*SEN1378* and *SEN1398*) that encode proteins identical to the C-terminal end of the integrase encoded by the Rac prophage. Our results show that *SEN1378* and *SEN1398* are dispensable for the excision of  $\phi$ SE14, probably because they are pseudogenes. Since cross talk between integrases encoded by different GEIs has been reported to occur (34), the participation of foreign integrases in the excision of  $\phi$ SE14 remains a possibility.

Excision of GEIs from the bacterial chromosome often leads to the formation of a detectable extrachromosomal CF (6, 9, 23, 34, 43). Although inverse PCR and sequence analyses indicate that spontaneous excision of  $\phi$ SE14 most likely results in the formation of a CF, we do not yet have direct physical evidence to prove the existence of such an excision product, as in the case of other unstable GEIs (4, 6). Furthermore, in addition to the possibility of CF formation, we cannot yet exclude the possibility that  $\phi$ SE14 can also exist as tandem repeats in the bacterial chromosome, as our inverse PCR products are also consistent with this possibility. Such tandem amplification has been described previously for several GEIs in different organisms (4, 24, 48, 51).

The location and overall genetic structure of  $\phi$ SE14 are remarkably conserved in *S. Enteritidis* strains, regardless of the geographic origins and sources of isolation of the strains. Of a collection of more than 100 wild-type *S. Enteritidis* strains isolated from humans, rodents, birds, and poultry-related products, only four strains do not carry this GEI. Two of these strains (MZ743 and MZ745) were isolated in the late 1940s (50), and the other two strains (SARB17 and SARB18) are part of the SARB reference collection assembled during the early 1980s (7). Since  $\phi$ SE14 is unstable and the excision of this element occurs spontaneously during growth under standard *in vitro* conditions, it is possible that these four strains may have lost  $\phi$ SE14 after extensive passage in the laboratory over decades. However, the presence of  $\phi$ SE14 in every recent isolate of *S. Enteritidis* and in the majority of the older strains analyzed suggests that strong selection occurs *in vivo* to maintain this island. Our data indicate that no gene carried in  $\phi$ SE14 is required for short-term colonization of systemic organs of BALB/c mice infected by the intraperitoneal route. Even though these observations argue against a major role for  $\phi$ SE14 in the virulence of *S. Enteritidis* in mice, we cannot rule out the possibility that some of these genes are required for the colonization of other niches in the host, including the intestinal tract and the oviduct, where the presence of this element may be under positive selection.

Finally, an internal fragment of  $\phi$ SE14, called Sdf I (Fig. 1), has been used widely as an *S. Enteritidis*-specific molecular marker in the development of several PCR-based detection and typing assays for *Salmonella* serovars in clinical and environmental samples (1, 2, 11, 32, 37, 44, 53). By using these assays, Sdf I has been detected only in *S. Enteritidis* strains, supporting our finding that  $\phi$ SE14 is an *S. Enteritidis*-specific locus. An *S. Enteritidis*-specific qPCR assay based on the detection of Sdf I was also recently developed and used to study

the regular distribution patterns for *S. Enteritidis* in the gastrointestinal tracts and internal organs from orally infected mice (15, 17). This qPCR assay has been used extensively to study the replication kinetics of *S. Enteritidis* in internal organs and the distribution of the pathogen in the gastrointestinal tracts of experimentally infected ducks (16, 18–21). Although our findings support the specificity of  $\phi$ SE14 as a molecular marker for *S. Enteritidis*, the instability of this genetic element requires a reevaluation of its usefulness for quantitative applications until the *in vivo* stability of the island in different animal hosts can be determined.

#### ACKNOWLEDGMENTS

We are indebted to Stanley Maloy (SDSU, San Diego, CA), Guido Mora (UNAB, Santiago, Chile), Juan Carlos Hormazábal (ISP, Chile), María Esther Saldías (SAG, Chile), and Francisco Silva (Hospital Clínico, Universidad de Chile) for generous gifts of bacterial strains. We thank Fred Long (VRISD) for invaluable help in bioinformatic analyses. We also thank Claudia Durán and Sabrita Chandía (ICBM) for assistance in microbiological techniques and Christine Shields (TAMU) for assistance in animal work.

This work was supported by grant ADI-08/2006 to I.C. from CONICYT (Chile) and the World Bank. C.J.B. and C.A.S. were supported by fellowships from CONICYT (Chile). M.M. and S.P. were supported partly by NIH grants R01AI073971 and R01AI052237. H.L.A.-P. was supported by NIH grants R21AI083964, R01AI083646, and R56AI077645.

#### REFERENCES

1. Agron, P. G., R. L. Walker, H. Kinde, S. J. Sawyer, D. C. Hayes, J. Wollard, and G. L. Andersen. 2001. Identification by subtractive hybridization of sequences specific for *Salmonella enterica* serovar Enteritidis. *Appl. Environ. Microbiol.* **67**:4984–4991.
2. Alvarez, J., M. Sota, A. B. Vivanco, I. Perales, R. Cisterna, A. Rentería, and J. Garaizar. 2004. Development of a multiplex PCR technique for detection and epidemiological typing of *Salmonella* in human clinical samples. *J. Clin. Microbiol.* **42**:1734–1738.
3. Arrach, N., S. Porwollik, P. Cheng, A. Cho, F. Long, S. H. Choi, and M. McClelland. 2008. *Salmonella* serovar identification using PCR-based detection of gene presence and absence. *J. Clin. Microbiol.* **46**:2581–2589.
4. Barten, R., and T. F. Meyer. 2001. DNA circle formation in *Neisseria gonorrhoeae*: a possible intermediate in diverse genomic recombination processes. *Mol. Gen. Genet.* **264**:691–701.
5. Bochner, B. R., H. C. Huang, G. L. Schieven, and B. N. Ames. 1980. Positive selection for loss of tetracycline resistance. *J. Bacteriol.* **143**:926–933.
6. Bourhy, P., L. Salaun, A. Lajus, C. Medigue, C. Boursaux-Eude, and M. Picardeau. 2007. A genomic island of the pathogen *Leptospira interrogans* serovar Lai can excise from its chromosome. *Infect. Immun.* **75**:677–683.
7. Boyd, E. F., F. S. Wang, P. Beltran, S. A. Plock, K. Nelson, and R. K. Selander. 1993. *Salmonella* reference collection B (SARB): strains of 37 serovars of subspecies I. *J. Gen. Microbiol.* **139**(Pt. 6):1125–1132.
8. Braden, C. R. 2006. *Salmonella enterica* serotype Enteritidis and eggs: a national epidemic in the United States. *Clin. Infect. Dis.* **43**:512–517.
9. Bueno, S. M., C. A. Santiviago, A. A. Murillo, J. A. Fuentes, A. N. Trombert, P. I. Rodas, P. Youderian, and G. C. Mora. 2004. Precise excision of the large pathogenicity island, SPI7, in *Salmonella enterica* serovar Typhi. *J. Bacteriol.* **186**:3202–3213.
10. CDC. 2008. *Salmonella* surveillance: annual summary, 2006. U.S. Department of Health and Human Services, CDC, Atlanta, GA. <http://www.cdc.gov/ncidod/dbmd/phlisdata/salmonella.htm>.
11. Charlton, B. R., R. L. Walker, B. H. Kinde, C. R. Bauer, S. E. Channing-Santiago, and T. B. Farver. 2005. Comparison of a *Salmonella* Enteritidis-specific polymerase chain reaction assay to delayed secondary enrichment culture for the detection of *Salmonella* Enteritidis in environmental drag swab samples. *Avian Dis.* **49**:418–422.
12. Cherepanov, P. P., and W. Wackernagel. 1995. Gene disruption in *Escherichia coli*: TcR and KmR cassettes with the option of Flp-catalyzed excision of the antibiotic-resistance determinant. *Gene* **158**:9–14.
13. Datsenko, K. A., and B. L. Wanner. 2000. One-step inactivation of chromosomal genes in *Escherichia coli* K-12 using PCR products. *Proc. Natl. Acad. Sci. U. S. A.* **97**:6640–6645.
14. De Buck, J., F. Van Immerseel, F. Haesebrouck, and R. Ducatelle. 2004. Colonization of the chicken reproductive tract and egg contamination by *Salmonella*. *J. Appl. Microbiol.* **97**:233–245.
15. Deng, S. X., A. C. Cheng, M. S. Wang, and P. Cao. 2007. Gastrointestinal tract distribution of *Salmonella enteritidis* in orally infected mice with a species-specific fluorescent quantitative polymerase chain reaction. *World J. Gastroenterol.* **13**:6568–6574.
16. Deng, S. X., A. C. Cheng, M. S. Wang, and P. Cao. 2008. Serovar-specific real-time quantitative detection of *Salmonella* Enteritidis in the gastrointestinal tract of ducks after oral challenge. *Avian Dis.* **52**:88–93.
17. Deng, S. X., A. C. Cheng, M. S. Wang, P. Cao, B. Yan, N. C. Yin, S. Y. Cao, and Z. H. Zhang. 2008. Quantitative studies of the regular distribution pattern for *Salmonella enteritidis* in the internal organs of mice after oral challenge by a specific real-time polymerase chain reaction. *World J. Gastroenterol.* **14**:782–789.
18. Deng, S. X., A. C. Cheng, M. S. Wang, X. R. Li, and B. Yan. 2009. Replication kinetics of *Salmonella enteritidis* in internal organs of ducklings after oral challenge: a quantitative time-course study using real-time PCR. *Vet. Res. Commun.* **33**:273–280.
19. Deng, S. X., A. C. Cheng, M. S. Wang, B. Yan, N. C. Yin, S. Y. Cao, Z. H. Zhang, and P. Cao. 2008. The pathogenesis of *Salmonella* Enteritidis in experimentally infected ducks: a quantitative time-course study using TaqMan polymerase chain reaction. *Poult. Sci.* **87**:1768–1772.
20. Deng, S. X., A. C. Cheng, M. S. Wang, B. Yan, N. C. Yin, S. Y. Cao, Z. H. Zhang, and P. Cao. 2008. A study of the distribution patterns and levels of *Salmonella* Enteritidis in the immune organs of ducklings after oral challenge by serovar-specific real-time PCR. *Avian Dis.* **52**:507–512.
21. Deng, S. X., A. C. Cheng, M. S. Wang, and L. G. Ye. 2009. Quantitative analysis of *Salmonella* Enteritidis loads in ducklings after nasal inoculation. *Poult. Sci.* **88**:1888–1892.
22. Deng, W., S. R. Liou, G. Plunkett III, G. F. Mayhew, D. J. Rose, V. Burland, V. Kodoyianni, D. C. Schwartz, and F. R. Blattner. 2003. Comparative genomics of *Salmonella enterica* serovar Typhi strains Ty2 and CT18. *J. Bacteriol.* **185**:2330–2337.
23. Doublet, B., D. Boyd, M. R. Mulvey, and A. Cloeckaert. 2005. The *Salmonella* genomic island 1 is an integrative mobilizable element. *Mol. Microbiol.* **55**:1911–1924.
24. Doublet, B., G. R. Golding, M. R. Mulvey, and A. Cloeckaert. 2008. Secondary chromosomal attachment site and tandem integration of the mobilizable *Salmonella* genomic island 1. *PLoS One* **3**:e2060.
25. Gantois, I., R. Ducatelle, F. Pasmans, F. Haesebrouck, R. Gast, T. J. Humphrey, and F. Van Immerseel. 2009. Mechanisms of egg contamination by *Salmonella* Enteritidis. *FEMS Microbiol. Rev.* **33**:718–738.
26. Guard-Bouldin, J., R. K. Gast, T. J. Humphrey, D. J. Henzler, C. Morales, and K. Coles. 2004. Subpopulation characteristics of egg-contaminating *Salmonella enterica* serovar Enteritidis as defined by the lipopolysaccharide O chain. *Appl. Environ. Microbiol.* **70**:2756–2763.
27. Guard-Petter, J. 2001. The chicken, the egg and *Salmonella enteritidis*. *Environ. Microbiol.* **3**:421–430.
28. Guard-Petter, J. 1998. Variants of smooth *Salmonella enterica* serovar Enteritidis that grow to higher cell density than the wild type are more virulent. *Appl. Environ. Microbiol.* **64**:2166–2172.
29. Guard-Petter, J., L. H. Keller, M. M. Rahman, R. W. Carlson, and S. Silvers. 1996. A novel relationship between O-antigen variation, matrix formation, and invasiveness of *Salmonella enteritidis*. *Epidemiol. Infect.* **117**:219–231.
30. Guard-Petter, J., C. T. Parker, K. Asokan, and R. W. Carlson. 1999. Clinical and veterinary isolates of *Salmonella enterica* serovar Enteritidis defective in lipopolysaccharide O-chain polymerization. *Appl. Environ. Microbiol.* **65**:2195–2201.
31. Herikstad, H., Y. Motarjemi, and R. V. Tauxe. 2002. *Salmonella* surveillance: a global survey of public health serotyping. *Epidemiol. Infect.* **129**:1–8.
32. Herrera-Leon, S., J. R. McQuiston, M. A. Usera, P. I. Fields, J. Garaizar, and M. A. Echeita. 2004. Multiplex PCR for distinguishing the most common phase-1 flagellar antigens of *Salmonella* spp. *J. Clin. Microbiol.* **42**:2581–2586.
33. Hill, S. A., T. Woodward, A. Reger, R. Baker, and T. Dinse. 2007. Role for the RecBCD recombination pathway for *pilE* gene variation in repair-proficient *Neisseria gonorrhoeae*. *J. Bacteriol.* **189**:7983–7990.
34. Hochhut, B., C. Wilde, G. Balling, B. Middendorf, U. Dobrindt, E. Brzuszkiewicz, G. Gottschalk, E. Carniel, and J. Hacker. 2006. Role of pathogenicity island-associated integrases in the genome plasticity of uropathogenic *Escherichia coli* strain 536. *Mol. Microbiol.* **61**:584–595.
35. Humphrey, T. J., A. Williams, K. McAlpine, M. S. Lever, J. Guard-Petter, and J. M. Cox. 1996. Isolates of *Salmonella enterica* Enteritidis PT4 with enhanced heat and acid tolerance are more virulent in mice and more invasive in chickens. *Epidemiol. Infect.* **117**:79–88.
36. Jäger, G., R. Leipuviene, M. G. Pollard, Q. Qian, and G. R. Bjork. 2004. The conserved Cys-X<sub>1</sub>-X<sub>2</sub>-Cys motif present in the TtcA protein is required for the thiolation of cytidine in position 32 of tRNA from *Salmonella enterica* serovar Typhimurium. *J. Bacteriol.* **186**:750–757.
37. Kim, S., J. G. Frye, J. Hu, P. J. Fedorka-Cray, R. Gautam, and D. S. Boyle. 2006. Multiplex PCR-based method for identification of common clinical serotypes of *Salmonella enterica* subsp. *enterica*. *J. Clin. Microbiol.* **44**:3608–3615.
38. Lundblad, V., A. F. Taylor, G. R. Smith, and N. Kleckner. 1984. Unusual



- alleles of *recB* and *recC* stimulate excision of inverted repeat transposons Tn10 and Tn5. *Proc. Natl. Acad. Sci. U. S. A.* **81**:824–828.
39. Maloy, S. R. 1990. Experimental techniques in bacterial genetics. Jones and Bartlett Publishers, Boston, MA.
  40. Maloy, S. R., and W. D. Nunn. 1981. Selection for loss of tetracycline resistance by *Escherichia coli*. *J. Bacteriol.* **145**:1110–1111.
  41. McClelland, M., K. E. Sanderson, S. W. Clifton, P. Latreille, S. Porwollik, A. Sabo, R. Meyer, T. Bieri, P. Ozersky, M. McLellan, C. R. Harkins, C. Wang, C. Nguyen, A. Berghoff, G. Elliott, S. Kohlberg, C. Strong, F. Du, J. Carter, C. Kremizki, D. Layman, S. Leonard, H. Sun, L. Fulton, W. Nash, T. Miner, P. Minx, K. Delehaunty, C. Fronick, V. Magrini, M. Nhan, W. Warren, L. Florea, J. Spieth, and R. K. Wilson. 2004. Comparison of genome degradation in Paratyphi A and Typhi, human-restricted serovars of *Salmonella enterica* that cause typhoid. *Nat. Genet.* **36**:1268–1274.
  42. Miller, J. F. 1994. Bacterial transformation by electroporation. *Methods Enzymol.* **235**:375–385.
  43. Murphy, R. A., and E. F. Boyd. 2008. Three pathogenicity islands of *Vibrio cholerae* can excise from the chromosome and form circular intermediates. *J. Bacteriol.* **190**:636–647.
  44. O'Regan, E., E. McCabe, C. Burgess, S. McGuinness, T. Barry, G. Duffy, P. Whyte, and S. Fanning. 2008. Development of a real-time multiplex PCR assay for the detection of multiple *Salmonella* serotypes in chicken samples. *BMC Microbiol.* **8**:156.
  45. Parker, C. T., B. Harmon, and J. Guard-Petter. 2002. Mitigation of avian reproductive tract function by *Salmonella enteritidis* producing high-molecular-mass lipopolysaccharide. *Environ. Microbiol.* **4**:538–545.
  46. Parker, C. T., E. Liebana, D. J. Henzler, and J. Guard-Petter. 2001. Lipopolysaccharide O-chain microheterogeneity of *Salmonella* serotypes Enteritidis and Typhimurium. *Environ. Microbiol.* **3**:332–342.
  47. Parkhill, J., G. Dougan, K. D. James, N. R. Thomson, D. Pickard, J. Wain, C. Churcher, K. L. Mungall, S. D. Bentley, M. T. Holden, M. Sebailia, S. Baker, D. Basham, K. Brooks, T. Chillingworth, P. Connor, A. Cronin, P. Davis, R. M. Davies, L. Dowd, N. White, J. Farrar, T. Feltwell, N. Hamlin, A. Haque, T. T. Hien, S. Holroyd, K. Jagels, A. Krogh, T. S. Larsen, S. Leather, S. Moule, P. O'Gaora, C. Parry, M. Quail, K. Rutherford, M. Simmonds, J. Skelton, K. Stevens, S. Whitehead, and B. G. Barrell. 2001. Complete genome sequence of a multiple drug resistant *Salmonella enterica* serovar Typhi CT18. *Nature* **413**:848–852.
  48. Pavlovic, G., V. Burrus, B. Gintz, B. Decaris, and G. Guedon. 2004. Evolution of genomic islands by deletion and tandem accretion by site-specific recombination: ICES*StI*-related elements from *Streptococcus thermophilus*. *Microbiology* **150**:759–774.
  49. Porwollik, S., J. Frye, L. D. Florea, F. Blackmer, and M. McClelland. 2003. A non-redundant microarray of genes for two related bacteria. *Nucleic Acids Res.* **31**:1869–1876.
  50. Porwollik, S., C. A. Santiviago, P. Cheng, L. Florea, and M. McClelland. 2005. Differences in gene content between *Salmonella enterica* serovar Enteritidis isolates and comparison to closely related serovars Gallinarum and Dublin. *J. Bacteriol.* **187**:6545–6555.
  51. Ravatn, R., S. Studer, D. Springael, A. J. Zehnder, and J. R. van der Meer. 1998. Chromosomal integration, tandem amplification, and deamplification in *Pseudomonas putida* F1 of a 105-kilobase genetic element containing the chlorocatechol degradative genes from *Pseudomonas* sp. strain B13. *J. Bacteriol.* **180**:4360–4369.
  52. Thomson, N. R., D. J. Clayton, D. Windhorst, G. Vernikos, S. Davidson, C. Churcher, M. A. Quail, M. Stevens, M. A. Jones, M. Watson, A. Barron, A. Layton, D. Pickard, R. A. Kingsley, A. Bignell, L. Clark, B. Harris, D. Ormond, Z. Abdellah, K. Brooks, I. Cherevach, T. Chillingworth, J. Woodward, H. Norberczak, A. Lord, C. Arrowsmith, K. Jagels, S. Moule, K. Mungall, M. Sanders, S. Whitehead, J. A. Chabalgoity, D. Maskell, T. Humphrey, M. Roberts, P. A. Barrow, G. Dougan, and J. Parkhill. 2008. Comparative genome analysis of *Salmonella* Enteritidis PT4 and *Salmonella* Gallinarum 287/91 provides insights into evolutionary and host adaptation pathways. *Genome Res.* **18**:1624–1637.
  53. Trafny, E. A., K. Kozłowska, and M. Szpakowska. 2006. A novel multiplex PCR assay for the detection of *Salmonella enterica* serovar Enteritidis in human faeces. *Lett. Appl. Microbiol.* **43**:673–679.