

Research article

Open Access

## Multi-locus phylogeography of the dusky dolphin (*Lagenorhynchus obscurus*): passive dispersal via the west-wind drift or response to prey species and climate change?

April D Harlin-Cognato\*<sup>1</sup>, Tim Markowitz<sup>2</sup>, Bernd Würsig<sup>3</sup> and Rodney L Honeycutt<sup>4</sup>

Address: <sup>1</sup>Department of Zoology, Michigan State University, 203 Natural Sciences Building, East Lansing, MI 48824, USA., <sup>2</sup>Dusky Dolphin Research Project, Muritai, 13 Maui Street, Kaikoura, New Zealand., <sup>3</sup>Marine Mammal Research Program, Department of Marine Biology, Texas A&M University, 4700 Ave. U, Galveston, Texas 77551, USA. and <sup>4</sup>Pepperdine University, Natural Science Division, 24255 Pacific Coast Highway, Malibu, California 90263, USA.

Email: April D Harlin-Cognato\* - cognatoa@msu.edu; Tim Markowitz - tim\_markowitz@yahoo.com; Bernd Würsig - wursigb@tamug.edu; Rodney L Honeycutt - rodney.honeycutt@pepperdine.edu

\* Corresponding author

Published: 3 August 2007

Received: 14 March 2007

BMC Evolutionary Biology 2007, 7:131 doi:10.1186/1471-2148-7-131

Accepted: 3 August 2007

This article is available from: <http://www.biomedcentral.com/1471-2148/7/131>

© 2007 Harlin-Cognato et al; licensee BioMed Central Ltd.

This is an Open Access article distributed under the terms of the Creative Commons Attribution License (<http://creativecommons.org/licenses/by/2.0>), which permits unrestricted use, distribution, and reproduction in any medium, provided the original work is properly cited.

### Abstract

**Background:** The dusky dolphin (*Lagenorhynchus obscurus*) is distributed along temperate, coastal regions of New Zealand, South Africa, Argentina, and Peru where it feeds on schooling anchovy, sardines, and other small fishes and squid tightly associated with temperate ocean sea surface temperatures. Previous studies have suggested that the dusky dolphin dispersed in the Southern Hemisphere eastward from Peru via a linear, temperate dispersal corridor provided by the circumpolar west-wind drift. With new mitochondrial and nuclear DNA sequence data, we propose an alternative phylogeographic history for the dusky dolphin that was structured by paleoceanographic conditions that repeatedly altered the distribution of its temperate prey species during the Plio-Pleistocene.

**Results:** In contrast to the west-wind drift hypothesis, phylogenetic analyses support a Pacific/Indian Ocean origin, with a relatively early and continued isolation of Peru from other regions. Dispersal of the dusky dolphin into the Atlantic is correlated with the history of anchovy populations, including multiple migrations from New Zealand to South Africa. Additionally, the cooling of the Eastern Equatorial Pacific led to the divergence of anchovy populations, which in turn explains the north-south equatorial transgression of *L. obliquidens* and the subsequent divergence of *L. obscurus* in the Southern Hemisphere.

**Conclusion:** Overall, our study fails to support the west-wind drift hypothesis. Instead, our data indicate that changes in primary productivity and related abundance of prey played a key role in shaping the phylogeography of the dusky dolphin, with periods of ocean change coincident with important events in the history of this temperate dolphin species. Moderate, short-term changes in sea surface temperatures and current systems have a powerful effect on anchovy populations; thus, it is not infeasible that repeated fluctuations in anchovy populations continue to play an important role in the history of coastal dolphin populations.

## Background

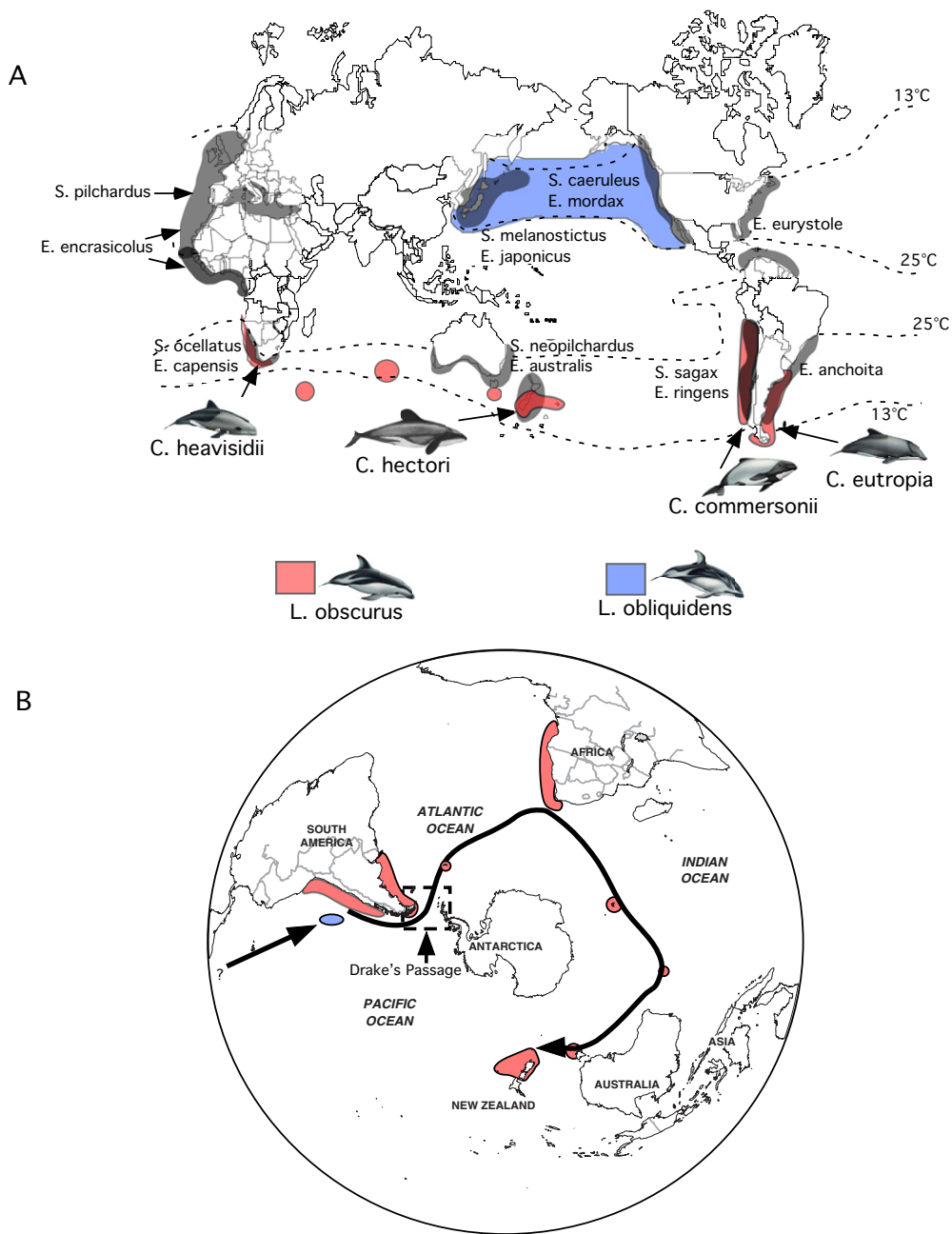
Over a 2.5 million year period in the Pleistocene repeated patterns of expansion and recession of ice sheets from Antarctica influenced globally the distribution of sea surface temperatures and the flow of ocean currents [1-3]. These historical geological events during the Plio-Pleistocene influenced contemporary patterns of genetic structure observed in marine organisms living in the Southern Hemisphere [4-6]. For example, small-bodied dolphins of the genera *Cephalorhynchus* and *Lagenorhynchus* occupy temperate waters in the Southern Hemisphere and share similarities in their distribution and pattern of morphological and genetic (exclusively mtDNA) divergence that have been interpreted as being the result of dispersal corridors present during inter-glacial periods in the Plio-Pleistocene [7,8]. These contemporary patterns of divergence and distribution observed for these genera of dolphin inspired the west-wind drift hypothesis, which suggests an eastward dispersal of dolphins via a unidirectional, linear route with the temperate west-wind drift ocean current present during the Plio-Pleistocene. The west-wind drift hypothesis plus the preference for temperate waters purportedly explains the roughly concordant distribution of these dolphins in temperate, upwelling regions along coastal South Africa, South America, and New Zealand within 8°C and 16°C isotherms (Figure 1). As a result, the current ranges of these genera are large but discontinuous, separated by vast expanses of ocean and tropical waters between temperate regions.

*Lagenorhynchus obscurus* (the dusky dolphin) is the one of the most widely distributed dolphin species in the Southern Hemisphere, with a disjoint distribution restricted to temperate waters (Figure 1). As such, this species provides a model for testing several predictions explicit in the west-wind drift hypothesis. First, the west-wind drift hypothesis implies a Peruvian origin of the dusky dolphin followed by eastward dispersal to other regions (Figure 1) [7,9]. In support of this prediction molecular studies have proposed that the Peruvian population was founded when *L. obscurus* and *L. obliquidens*, an anti-tropically distributed sister-species pair [10,11], diverged during a southward equatorial transgression in the Pacific Ocean approximately 1 million years ago when tropical waters cooled [12,13]. In contrast, recent molecular studies with better geographic sampling and both nuclear and mitochondrial DNA markers indicate a phylogeographic history of the dusky dolphin *inconsistent* with the west-wind drift hypothesis [8,14]. These studies suggest an alternative Atlantic/Indian Ocean origin [8], which is inconsistent with an anti-tropical speciation event in the Pacific Ocean and necessitates an alternative explanation for the transition between oceans.

Second, dispersal via the west-wind drift should result in a pattern of genetic variation that is linear and unidirectional [8,15]. One molecular study [14] suggests that Argentina, South Africa, and New Zealand populations have experienced relatively recent contact, perhaps as a large ancestral Atlantic/Indian Ocean population. Therefore, the origin of the dusky dolphin and its phylogeographic history remain inconclusive.

Finally, west-wind drift represents a passive dispersal mechanism that would result in a distributional pattern of the dusky dolphin that should be independent of changes in sea-surface temperatures, prey distribution, and correlated primary productivity. The dusky dolphin is concentrated in regions of high primary productivity, where cyclic upwelling supports an abundance of schooling anchovy (*Engraulis* sp.), sardines (*Sardinops* sp.), and other small fishes and squid limited in their distribution to temperate regions (Figure 1). The geographic association of these fishes and the dusky dolphin is not coincidental. Stomach-content analysis and behavioral observations in Argentina, Peru, and New Zealand indicate the diet of the dusky dolphin is comprised mainly of these prey items [13,16], and that movements of dolphin populations are coincident with seasonal shifts in prey distribution [17,18]. The preference for temperate prey species is an ancestral characteristic of all members of the genus *Lagenorhynchus*, including the Pacific white-sided dolphin (*L. obliquidens*), whose distribution is correlated with that of North Pacific anchovy (Figure 1). Sardines and anchovy are regionally and physiologically bounded by 13°C and 25°C isotherms (Figure 1) [4]. Clearly, the phylogeographic history of the dusky dolphin and its temperate prey species are biologically linked, so that global climatic oscillations affecting temperate regions would produce a history correlated with the isolation of ocean basins, with the degree of regional genetic divergence concordant with the closure of temperate ocean corridors and the frequency and duration of fluctuations in sea surface temperatures that altered the distribution and availability of prey.

In this study, we use new nuclear and mitochondrial DNA sequence data and complete geographic sampling to challenge the role that the west-wind drift played in the genetic structuring and dispersal of dusky dolphin populations. We provide a global phylogeographic perspective of the origin of the dusky dolphin, and assess the historical patterns of gene flow related to the location of temperate, up-welling coastal regions that are tightly linked to the distribution of prey species. In contrast to previous studies, our data support an alternative to the west-wind drift hypothesis, with a temporal and environmental correlation between the phylogeographic history of the dusky dolphin, its anchovy prey, and the Plio-Pleistocene pale-



**Figure 1**  
**Global distribution of the dolphin genera *Lagenorhynchus* and *Cephalorhynchus* and associated prey species in temperate ocean regions.** (A) Grey shaded areas outline the distribution of sardines (*Sardinops*, *Sardina*) and anchovy (*Engraulis*), which are regionally bounded by the 13°C and 25°C isotherms (dotted curves; modified from Grant and Bowen [50]). Coloured areas indicate the distribution of *Lagenorhynchus* species. *Cephalorhynchus* distributions overlap partially with *Lagenorhynchus* species in all areas indicated with an arrow. The distribution of dolphin species with anchovy and sardines is indicated where coloured and grey shaded areas overlap along temperate, coastal regions. (B) The west-wind drift hypothesis suggests that the dusky dolphin (*L. obscurus*) dispersed via a circum-global band of uninterrupted cool water, starting in coastal Peru, moving eastward through Drake's passage, to Argentina, South Africa, and New Zealand.

oceanography of the Southern Ocean and Eastern Equatorial Pacific.

## Results

### Diversity indices

Table 1 summarizes indices of genetic diversity. With the exception of *cyt b* for Peru, haplotype and nucleotide diversity for the *cyt b* and control region was high. The lower diversity of *cyt b* in Peru was first described by Casens et al. [14] and was attributed to high levels of mortality along the Peruvian coastline.

### Prediction 1: Peruvian origin

The dusky dolphin d-loop and *cyt b* haplotype networks recovered a Peru-specific lineage divergent from other geographic regions by several missing intermediate haplotypes (Figures 2 and 3). Similarly, the Bayesian analysis recovered a monophyletic clade of Peruvian haplotypes with 100% posterior probability, and generally supported the phylogenetic pattern of the statistical parsimony networks (Figure 2). The Bayesian analysis indicated with 96% posterior probability that the root of the dusky dolphin phylogeny was not the Peruvian clade, but rather occurred along a lineage of South American and New Zealand haplotypes (Figure 2).

### Prediction 2: Linear dispersal route

For each of the mitochondrial and nuclear genetic markers, both an AMOVA and  $F_{st}$  values revealed significant partitioning of variation among Peru, Argentina, New Zealand, and South Africa (Table 2). The high levels of divergence reflect the very low number of haplotypes found in more than one geographical region. For example, only 3 *cyt b* (A1.2, A1.1, and DLPH; Figure 2) and d-loop (A20, AR10, A18; Figure 3) haplotypes occurred in >1 geographic region. In no instance were Peruvian mitochondrial haplotypes shared with any other locality. Thus, the highest  $F_{st}$  values were between Peru and other localities, with the level of divergence between South Africa and Argentina considerably lower than either was to New Zealand (Table 2). Despite the high degree of divergence between geographic regions, no apparent pattern of a linear, easterly increase in divergence was evident.

The geographic distribution of haplotypes within the statistical parsimony networks revealed a genetic signature inconsistent with a linear dispersal route. In both *cyt b* (Figure 2) and control region (Figure 3) networks, New Zealand lineages were notably separated from the Peruvian clade by a mixture of haplotypes from South Africa, Argentina, New Zealand, and several missing haplotypes. With the exception of Peru, at least one haplotype at the distal tip of each central haplotype group was from New Zealand. Both mitochondrial networks lacked a central haplotype in high frequency, with the majority of most

frequent haplotypes clustered at the tips of the networks. The actin network (Figure 4) was dominated by three common alleles (a, b, l) at the center of the network present. These alleles varied in frequency in all four biogeographic regions and in the sister taxon, *L. obliquidens*. In 3 of the 5 tip clades, alleles were common to South Africa and New Zealand. The tips of the network contained alleles present in lower frequency and with more restricted geographic distributions. In one instance an allele from Argentina was placed at the periphery of the network (haplotype 'e'), and this allele was also sampled in New Zealand.

The MIGRATE analysis produced estimates of the amount of migration between geographical regions that suggests multiple east to west migrations dominated by dispersal from New Zealand to South Africa and Argentina and an absence of migration from Peru to other regions (Figure 5). The relative temporal shift in migration rates is evident in the comparison of the independent analyses of *cyt b* and the d-loop. The analysis of the *cyt b* gene suggests early high levels of migration from New Zealand to South Africa and Argentina with weak or no migration from South Africa or Argentina to Peru. The d-loop suggests a reduction in the rate of migration from New Zealand to South Africa and Argentina when compared to *cyt b*. In the estimates from the d-loop a weak, but significant, migration is observed from Argentina to South Africa and New Zealand. This was not represented in the *cyt b* results. Overall, these results support: 1) early and continued isolation of Peru from other regions; 2) at least 1, and possibly 2, periods of migration from New Zealand to South Africa, with the first migration period represented by *cyt b* suggesting a high, unidirectional migration rate; 3) the later onset of migration from Argentina to South Africa representing a possible 3<sup>rd</sup> period of migration into South Africa; 4) a high rate of unidirectional migration from New Zealand to Argentina correlated with that of migration to South Africa, suggesting an eastward dispersal event from New Zealand, and 5) followed by a reduced migration rate between New Zealand, Argentina, and South Africa, as would be expected of populations that gradually became genetically isolated.

### Prediction 3: Dates of divergence

Divergence times calculated from *cyt b* data indicated a divergence between *L. obscurus* and *L. obliquidens* of 1.9 [95% CI: 1.3–2.9] million years ago (mya), and the Peruvian lineage separated from other geographic regions 0.63 [95% CI: 0.38–0.98] mya.

### Comparative phylogeography of anchovy

The Bayesian analysis recovered a phylogeny (not shown) that supported previously established relationships between New World species of *Engraulis* with two major

**Table 1: Summary of genetic diversity indices for cytochrome b, control region, and actin intron I sequence data**

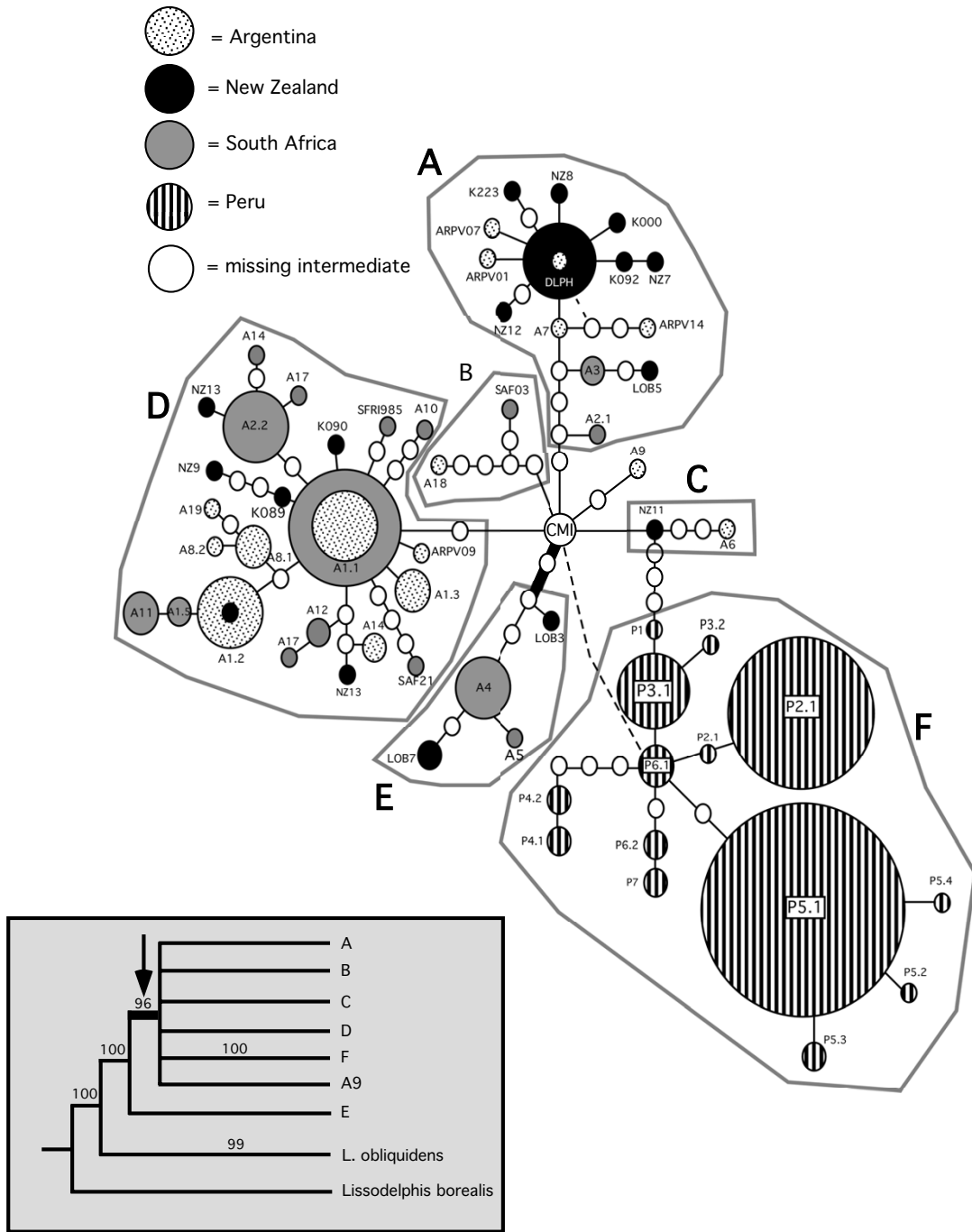
Partition	Region	n	<i>h</i>	$\pi$	S
cytochrome <i>b</i>	AR	31	0.93 (± 0.030)	0.0046 (± 0.003)	32
	SA	37	0.91 (± 0.027)	0.0047 (± 0.003)	34
	NZ	23	0.91 (± 0.052)	0.0063 (± 0.003)	37
	PE	78	0.71 (± 0.048)	0.0024 (± 0.001)	18
	Total	169			
control region	AR	29	0.91 (± 0.048)	0.0066 (± 0.004)	10
	SA	89	0.99 (± 0.005)	0.0170 (± 0.009)	47
	NZ	252	0.98 (± 0.005)	0.0187 (± 0.010)	82
	PE*	118	0.95 (± 0.010)	0.0123 (± 0.007)	N/A
	Total	488			
actin	AR	14	0.70 (± 0.095)	-	4
	SA	44	0.76 (± 0.049)	-	7
	NZ	48	0.82 (± 0.028)	-	7
	Total	106		-	

\*From Cassens et al. [14]; AR = Argentina, SA = South Africa, NZ = New Zealand, PE = Peru. n = number of mitochondria or gametes examined. *h* = haplotypic diversity,  $\pi$  = nucleotide diversity. S = number of segregating sites for mtDNA regions, or the number of actin alleles present in each geographic region. Standard errors are in parentheses.

**Table 2: Genetic divergence among *L. obscurus* populations.**

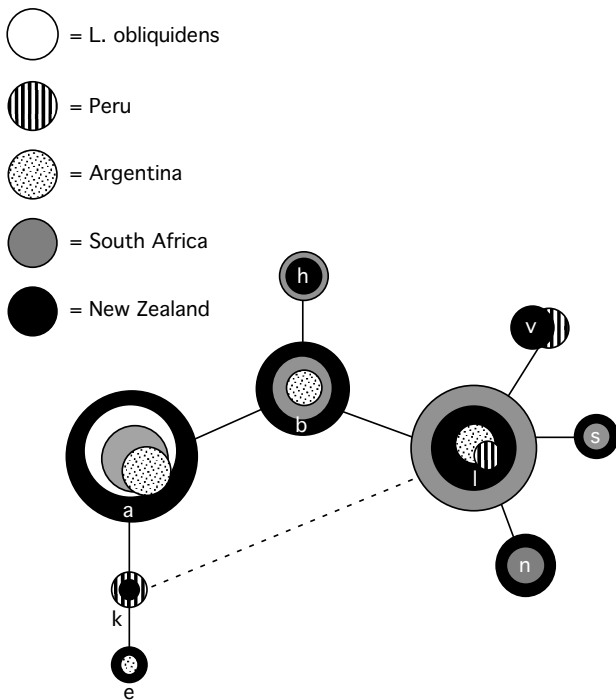
A. AMOVA				B. Pairwise divergence				
	Source	% variation	$\phi_{st}$		NZ	AR	SA	PE
<b>Cytb</b>								
(NZ, AR, SA, PE)	Among populations	48.95	<b>0.49**</b>	NZ	-			
	Within Populations	51.05		AR	0.21**	-		
				SA	0.29**	0.05*	-	
				PE	0.61**	0.59**	0.59**	-
<b>Dloop</b>								
(NZ, AR, SA, PE)	Among populations	73.90	<b>0.74**</b>	NZ	-			
	Within populations	26.10		AR	0.83**	-		
				SA	0.85**	0.08**	-	
				PE	0.47**	0.74**	0.78**	-
<b>Actin</b>								
(NZ, AR, SA)	Among populations	22.59	<b>0.23**</b>	NZ	-			
	Within populations	77.41		AR	0.23**	-		
				SA	0.21**	0.26**	-	

A) Analysis of molecular variance for *cyt b*, control region, and actin intron sequence data. B) Pair-wise  $F_{st}$  values. NZ = New Zealand, AR = Argentina, SA = South Africa, PE = Peru. \* = P < 0.01; \*\* = P < 0.001



**Figure 2**  
**The statistical parsimony network of dusky dolphin cytochrome b haplotypes.** Gray polygons indicate haplogroups with a Bayesian posterior probability of 90% or greater. The thick branch indicates the probable root of the dusky dolphin phylogeny, and dotted lines indicate alternative connections (reticulations) between haplotypes. Note the lack of a central haplotype, the "CMI" as in Cassens et al. [8]. Boxed insert is a condensed version of the Bayesian analysis consensus tree, with letters corresponding to haplogroups in the nested network. As in the haplotype network, the thick branch under the arrow is the proposed root of dusky dolphin lineages with numbers above nodes indicating posterior probabilities derived from Bayesian analysis.





**Figure 4**  
**The statistical parsimony network of dusky dolphin actin intron I alleles.** Dotted lines indicate alternative connections (reticulations) between haplotypes.

lineages, a "New World" clade with California (*E. mordax*) and a monophyletic South American (*E. ringens*/*E. anchoita*) lineage in which *E. ringens* and *E. anchoita* are reciprocally monophyletic, and an "Old World" clade comprised of a polyphyletic assemblage of *E. australis*, *E. encrasicolus*, *E. capensis*, and *E. japonicus* [6,50]. Our results suggest a divergence between *E. mordax* and South American species at 9.0 [95% CI: 6.9–10.0] mya, with *E. ringens* and *E. anchoita* diverging at 1.6 [95% CI: 1.0–2.5] mya.

The parsimony network of anchovy *cyt b* sequences displayed similar geographical patterns in the distribution of genetic diversity as that of the dusky dolphin (Figure 6).

**Discussion**

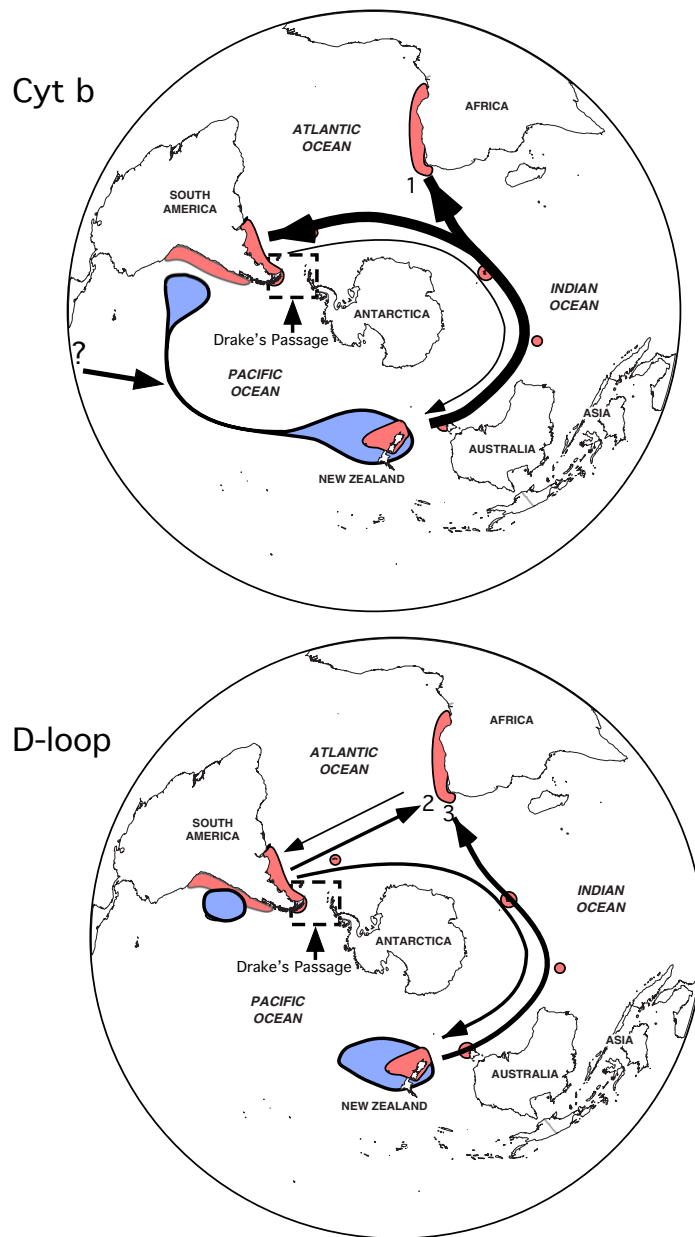
**Dusky dolphin phylogeography and the west-wind drift hypothesis**

The overall pattern of genetic variation observed for the dusky dolphin in the Southern Hemisphere is not congruent with the west-wind drift hypothesis. Bayesian analysis of mitochondrial DNA sequences suggests the dusky dolphin diverged from *L. obliquidens* via a north to south equatorial transgression approximately 2 million years ago, with confidence intervals overlapping previously published estimates. However, the root of the dusky dolphin dispersal in the Southern Hemisphere was not Peru

as previously proposed [13,19], but rather somewhere in the southern South Pacific/Indian Ocean basins. This result is further supported by the divergence of Peru from other regional populations relatively recently, and considerably later than the *L. obliquidens*/*L. obscurus* divergence 2.0 million years ago (Figure 7). There are several lines of evidence from the distribution of genetic variation that support a larger, South Pacific/Atlantic Ocean population as the source of dusky dolphin lineages. First, the presence of haplotypes from New Zealand at both the center and the periphery of the actin network suggest an old New Zealand population. Second, the central cluster of haplotypes from New Zealand, South Africa, and Argentina in low frequencies at the center of the mitochondrial DNA haplotype networks (Figures 2 and 3) is indicative of the remnants of a historical population with a large geographical distribution that did not include Peru. Third, there are greater levels of genetic divergence between New Zealand and other regions, and the lowest levels of divergence between South Africa and Argentina (Table 2). This pattern of genetic divergence is consistent with an early transgression to the South Pacific/Indian Ocean followed by expansion into the Atlantic.

Given that Peru is not the probable root of dusky dolphin origin, there are two alternative scenarios to explain the marked isolation of Peru from other geographical regions, both of which support a South Pacific/Indian Ocean origin. First, the north to south transgression during the Pliocene resulted in the formation of a large population of dusky dolphins that eventually extended from New Zealand to Australia, South Africa, Argentina, and dispersed through Drake's passage between the Antarctic Peninsula and Tierra del Fuego into Peru. There is evidence that glacial cycles had profound effects on the availability of a temperate dispersal corridor for the dusky dolphin from Peru into the Atlantic, both through the Strait of Magellan and Drake's Passage [20-23]. These alterations in the availability of a dispersal route may have resulted in the isolation of a Peruvian population from other regions, and may explain the contemporary gap in the distribution of the dusky dolphin along the Peruvian coast from the Strait of Magellan to southern Tierra del Fuego (Figure 1). Second, equatorial transgression led to a large, cohesive population of dusky dolphins that extended from Peru across the southern Pacific and Indian Oceans. Changes in migration patterns across the southern Pacific, coupled with restricted dispersal through Drake's passage and the Strait of Magellan resulted in the early isolation of Peru from other geographic regions. Although our data are insufficient to discriminate between these alternative hypotheses, neither is consistent with a Peruvian origin.





**Figure 5**

**Dispersal hypothesis synthesized from analyses of cytochrome *b* and d-loop sequence data.** Blue shaded areas depict the hypothesized origin of the dusky dolphin from a trans-equatorial transgression of *L. obliquidens*, approximately 2 million years ago, that resulted in an early isolation of a Peruvian population and the founding of a population in New Zealand, which served as the source population for migration into the Atlantic. Arrow direction and thickness indicate the direction and magnitude (Table 3) of migrations, respectively. Only migration rates  $\geq 1$ , the theoretical minimum necessary to maintain population cohesion, are depicted (Table 3). Under the assumption that the rate of evolution of the *cyt b* and d-loop regions vary, the comparison of the *cyt b* with the d-loop allows for a relative temporal interpretation of migration rates, with those from the d-loop representing more recent patterns. Based on this assumption, numbers at the end of arrows indicate the proposed 2–3 migrations into South Africa, perhaps following extirpation due to climatic fluctuations (see Discussion).

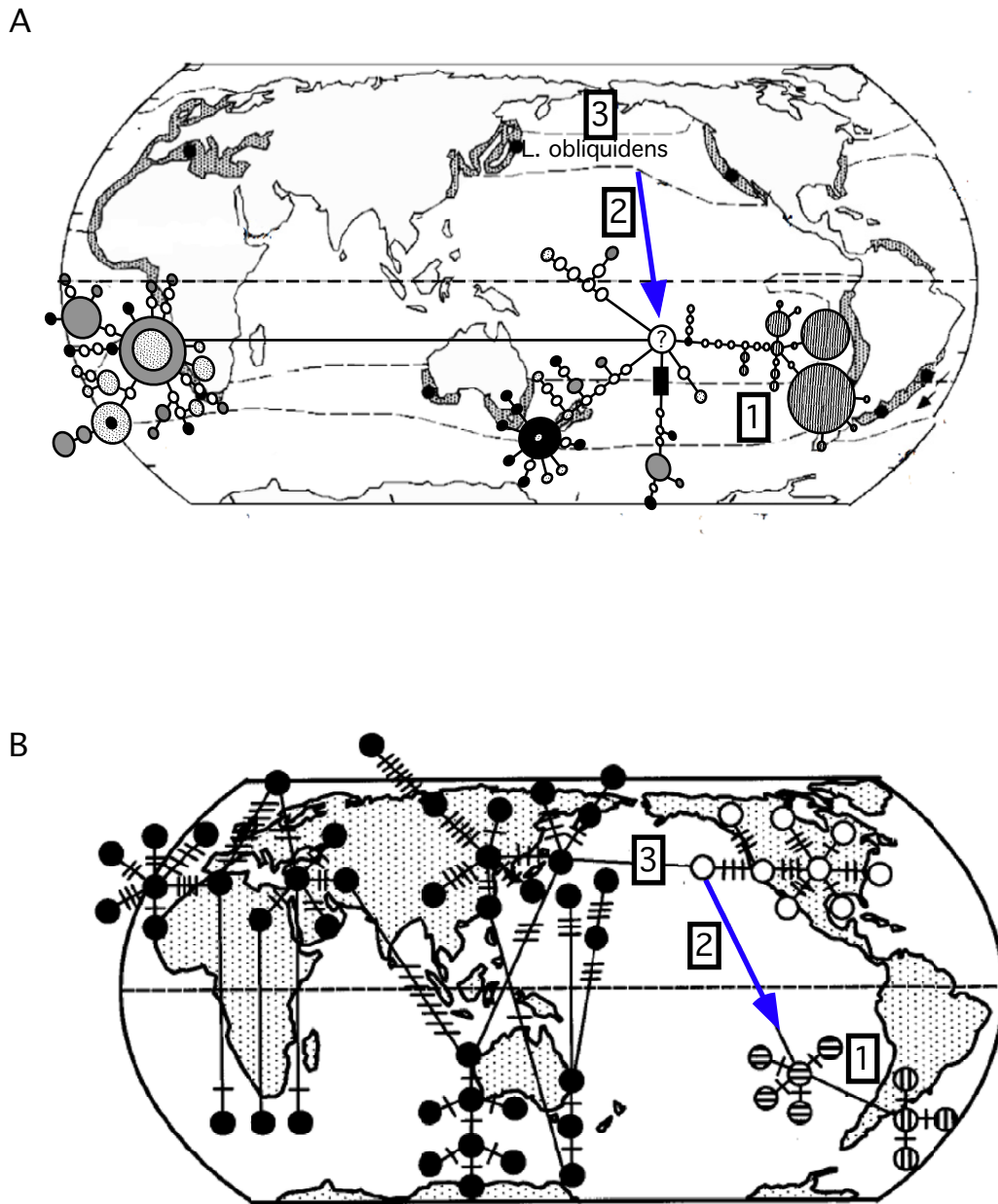
Our analysis of the phylogeography of the dusky dolphin does not support a linear, eastward dispersal route predicted by the west-wind drift hypothesis. Our data do not show a pattern of isolation-by-distance from Peru to New Zealand. To the contrary, historical migration patterns suggest an alternative hypothesis of a founding population in the South Pacific/Indian Ocean that expanded its geographic range to the Atlantic via a temperate dispersal corridor (Figure 5). Evidence from analysis of *cyt b* and d-loop sequences suggests that the migration rate per generation from New Zealand westward was highest relatively early, followed by continued, but reduced, westward migration later in history. This reduction in westward migration was accompanied by weak, but potentially significant, migration from Argentina eastward to South Africa and New Zealand (Table 3, Figure 5). This hypothesis receives further support from the occurrence of very few haplotypes in more than one geographic region, and the relatively large number of missing intermediates between haplotypes typical of an old population subject to the effects of genetic drift. In the Southern Hemisphere, eastern South America, South Africa, and New Zealand are loosely connected by a series of small islands within a band of temperate sea surface temperatures (Figure 1). These islands are used at least periodically by the dusky dolphin [9,24] and likely served as stepping-stones for reciprocal genetic exchange across the South Pacific and Indian Oceans. Although the dusky dolphin may have at one time dispersed via oceanic islands, a recent study of microsatellite variation between South Africa and Argentina found no evidence for contemporary dispersal of dusky dolphins between these regions [14]. The large cluster of New Zealand-specific haplotypes at the periphery of the *cyt b* and control region networks (Figures 2 and 3), with large, mixed clusters of Argentina/South Africa haplotypes is indicative of the slow decay of contact between geographical regions over time with increased genetic distance. Overall, this suggests that the observed pattern of genetic diversity in contemporary dusky dolphin populations is the relic of a historically large population that has since become isolated into 4 regional populations.

#### **Comparative phylogeography of the dusky dolphin and anchovy**

The parsimony network of anchovy *cyt b* sequences displayed similar geographical patterns in the distribution of genetic diversity as that of the dusky dolphin (Figure 6). Most notable similarities were: (1) marked divergence between South American haplotypes from those in the Atlantic and Indian Oceans, and (2) north-south equatorial transgressions in the Pacific Ocean with (3) a putative ancestor in the North Pacific. The correlation between the patterns of divergence between the dusky dolphin and anchovy species are likely related to paleoceanographic conditions during the Pleistocene (Figure 7). In particular,

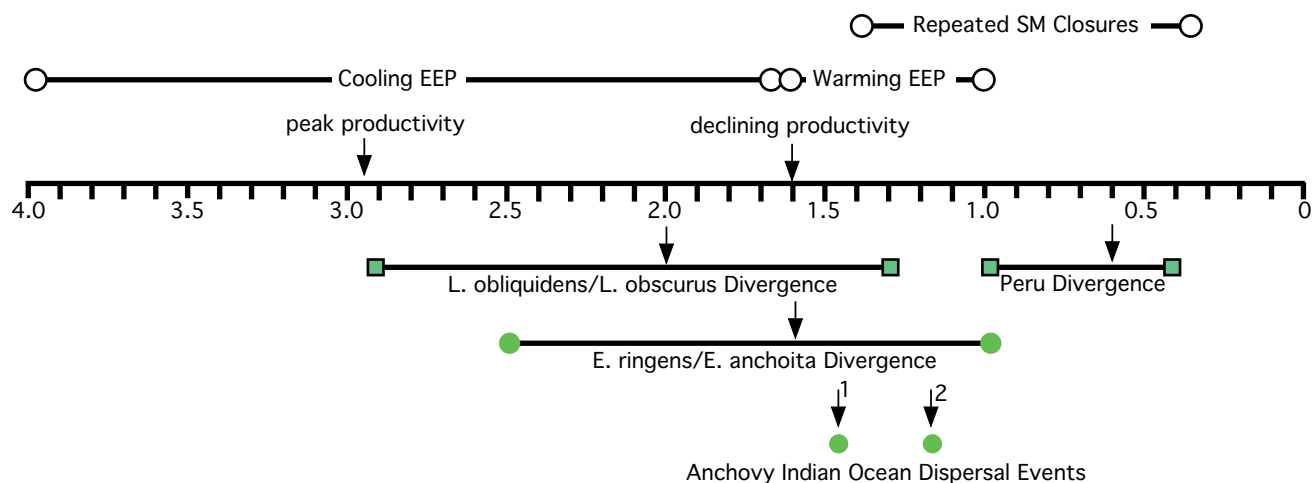
the date of *L. obliquidens/L. obscurus* divergence is correlated with the cooling and subsequent warming of sea surface temperatures in the EEP, with the point estimate of equatorial transgression occurring toward the end of the cooling period when primary productivity was well beyond its peak (Figure 7). The extension of nutrient rich waters in the EEP likely offered an arena for the expansion of anchovy in the EEP northward towards the equator into the tropics, and coincidentally, the cooling of tropical waters, combined with increased prey distribution and abundance, may have provided a natural conduit for the transgression of *L. obliquidens* from the Atlantic into the Pacific. The warming of sea surface temperatures and declining productivity in the EEP coincides not only with the divergence of *L. obliquidens/L. obscurus*, but also with the divergence of *E. ringens* and *E. anchoita* (Figure 7). This suggests the warming of the EEP and subsequent decline in productivity narrowed the distribution of *E. ringens*, which isolated eastern and western South American populations, and consequently resulted in an anti-tropical division of dolphin populations. Based on our study, this founder dolphin population took refuge in the cooler South Pacific/Indian Ocean.

Approximately 1 million years after the equatorial transgression into the Southern Hemisphere, there is evidence for a relatively early founding of *L. obscurus* in New Zealand followed by migration westward to Argentina and South Africa (Table 3, Figure 5). In addition to the evidence from the distribution of genetic diversity, these migration events support a diffusion of the dusky dolphin through the Indian Ocean into the Atlantic, followed by colonization and expansion of populations in coastal upwelling regions. There are several inferences from the history of anchovy [6] that are correlated with the phylogeographic pattern observed in the dusky dolphin. First, anchovy species are extremely sensitive to variation in sea surface temperatures and current systems, and this has been especially true in South Africa and Australia where climate change has had a very dynamic history [6]. As a result, South African and Australian species have suffered multiple extinctions, bottlenecks, and large-scale introgressions from other regions during Plio-Pleistocene climate change. The most recent colonization of Australia was most likely via equatorial transgression from Japan. Second, there is evidence for two Pleistocene dispersals across the Indian Ocean, one at 1.5 and the other 1.2 million years ago, between Europe (Atlantic) and Japan (west Pacific) via Australia and South Africa (Atlantic/Indian Oceans) "stepping stones" [6]. Similar to anchovy, our data suggest that South Africa experienced at least 2, if not 3, independent dusky dolphin colonization events. If we assume that the *cyt b* and d-loop provide some insight into the chronology of dusky dolphin dispersal events, our data suggest dusky dolphin migration events from



**Figure 6**

**A comparison between the global distribution of (A) dusky dolphin and (B) anchovy (*Engraulis* sp.) genetic variation.** The statistical parsimony networks of the dusky dolphin and anchovy cytochrome *b* haplotypes are overlaid on a map to illustrate the geographic pattern of haplotype evolution. Numbers point out notable similarities: (1) marked divergence between South American haplotypes from those in the Atlantic and Indian Oceans, and (2) north-south equatorial transgressions in the Pacific Ocean with (3) a putative ancestor in the North Pacific. Anchovy illustration is from Grant and Bowen [50].



**Figure 7**  
**A chronological correlation of paleoceanographic events and the phylogeographic histories of the dusky dolphin and anchovy (*Engraulis* sp).** Above the timeline are paleoceanographic events, with the point estimates and range of dates for each event. EEP = Eastern Equatorial Pacific; SM = Strait of Magellan. Below the timeline are events in the history of anchovy and dusky dolphin populations. Bars represent 95% confidence intervals for point estimates, indicated by black arrows. At least as early as 4.3 mya, a cooling trend began in the Eastern Equatorial Pacific (EEP), causing sea surface temperatures in this tropical region to drop from 26°C to as low as 20°C in the late Pleistocene [51]. This drop in temperature caused a peak in primary productivity 2.9 mya that was 2 to 3 times greater than average values earlier in the Plio-Pleistocene [51]. At 1.6 mya, this productivity began to decline as sea surface temperatures began to rise [51]. As warmer tropical waters returned, the range and abundance of anchovy in the EEP would have declined, resulting in the gradual disappearance of this dispersal corridor, consequently resulting in an anti-tropical division of dolphin populations.

New Zealand and Argentina to South Africa (Figure 5) potentially coincide with the two anchovy dispersal events. The first was from New Zealand (Figure 5), followed by a second weaker migration event from Argentina and perhaps a third from New Zealand (Figure 5). These colonization events are further supported by a lack of, or weak, migration to or from South Africa during multiple periods (Table 3, Figure 5), suggesting that dusky dolphins, similar to anchovy, were extirpated from South Africa perhaps due to similar response to environmental change.

**Conclusion**

In summary, the phylogeographic history of the dusky dolphin and its anchovy prey are correlated, suggesting that passive dispersal via the west-wind drift did not play a role in the history of the dusky dolphin. Instead, our data support the idea that changes in primary productivity and related abundance of prey played a key role in shaping the phylogeography of the dusky dolphin, with timing of oceanic change coincident with the dates of important events in the history of dolphin populations. Given the wide-distribution and relatively recent contact between geographic regions, it is likely that the influence of paleoceanography of the Southern Hemisphere continued until recently, or perhaps continues, to play a role in the

dispersal behavior of the dusky dolphin. The dynamic fluctuations in anchovy abundance on the order of decades demonstrate how moderate, short-term change in sea surface temperatures and current systems, such as during El Nino years, are powerful enough to have dramatic effects relative to anchovy populations [6]. Dolphins have the advantage of active dispersal, and are perhaps more flexible in to short-term changes in ocean conditions than anchovy with planktonic larva dispersal. Yet in Peru, the genetic variation is considerably lower than in other geographic regions. It may be that this is due to an historical founder effect followed by long-term isolation. However, it may be that population crashes in anchovy and other temperate fishes during el Nino events, along with dolphin harvest practices, are responsible for low levels of genetic diversity in Peru. On the scale of millennia, it is not infeasible that repeated fluctuations in the abundance and distribution of anchovy and other small schooling fishes in other regions have played an important role in the history of coastal dolphin populations.

**Methods**

**Data collection**

DNA sequence data were derived from tissues of *L. obscurus* obtained from either skin swabs of living animals or post-mortem biopsies of beach-cast animals, or from

**Table 3: Summary of estimated migration rates per generation for dusky dolphin populations.**

Population	Locus	Theta [ $N_e\mu$ ]	Migrations per generation [ $m/\mu$ ] * theta			
			1,+	2,+	3,+	4,+
1 New Zealand	Dloop	0.009	-----	0.000	2.240	0.125
	Cytb	0.014	-----	0.282	1.477	0.000
2 Peru	Dloop	0.006	0.000	-----	0.125	0.000
	Cytb	0.015	0.000	-----	0.000	0.000
3 Argentina	Dloop	0.001	0.576	0.082	-----	0.987
	Cytb	0.002	8.639	0.000	-----	0.497
4 South Africa	Dloop	0.014	2.970	0.000	2.381	-----
	Cytb	0.012	6.946	0.000	0.000	-----

$\mu$  = mutations per site per generation;  $m$  = number of migrants;  $N_e$  = effective population size [52]. A plus sign (+) indicates the receiving population.

GenBank accessions (Table 4). For tissue samples, genomic DNA was isolated with either a standard phenol-chloroform techniques or with a DNeasy Kit (Qiagen, Valencia, CA). DNA from the same individual was used to amplify and sequence all gene regions when possible. Tissues from Peru were not available, but sequences were obtained from GenBank accessions (Table 4). The complete mitochondrial cytochrome *b* (*cyt b*) gene (1040 nucleotides), 474 base pairs (bp) of the mitochondrial control region, and 995 bp of nuclear DNA (nDNA) intron I of the muscle actin gene (*actin*) were amplified with PCR. External primer sets included: (1) *cyt b*-5'-GAAAAACCAACGTTGTWATTCAACT-3' and 5'-GTTTAATTAGAATYTYAGCTTTGGG3'; (2) control region - tPro and Dlp5 [25]; (3) Actin- 5'-GATTTGGTC-CCTCTATGTCTCT-3' and 5'-TACTTTTGAACCTGCCAC-CTAC-3'. PCR reactions included the following: 5  $\mu$ l of PCR buffer, 25 mM MgCl, 10 mM dNTP's (2.5 mM each), 1  $\mu$ l 10 mg/ml bovine serum albumin (BSA), 1  $\mu$ l 10 uM primer, and 5 U of *Taq*. Conditions of the PCR were 94°C, 2 min followed by 35 cycles at 92°C, 30 s, annealing 30 s, and extension at 72°C, 30 s. Published annealing temperatures were used except: 765F/766R, 50°C; LagActin1/2, 58°C. PCR products were purified with QIAquick PCR purification kits (Qiagen, Valencia, CA). Amplicons were sequenced with ABI (Applied Biosystems, Foster City, CA) BigDye Terminator chemistry, and products were run on an ABI 377. Internal primers *cyt b* (560, 5'-GCAAC-CCTAACACGATTCCTTCG-3'; 610, 5'-CCAGTTTCGTG-TAGGAATAATAGG-3') and *actin* (Act5-L, 5'-CCACTACTTTAGGCAG-3'; M13Act5R-H, 5'-TGTA AAC-GACGGCCAGTCTGCCTAACTAGTGG-3' were used to sequence fragments to resolve ambiguities.

Sequenced fragments were edited and compiled with Sequencher v. 4.1 (Gene Codes Corporation, Ann Arbor, Michigan). A consensus of sense and antisense strands for each individual sequence and data partition were compiled and exported to MacClade vs. 4.05 [26]. Amino acid

translations of the open reading frames of *cyt b* were examined for stop codons to verify sequence orthology. Neither *actin* nor *cyt b* contained any insertions or deletions. The control region had a single indel that was accommodated in the alignment with a minor alignment adjustment. *Actin* sequences were subjected to a BLAST search to verify sequence orthology. In all BLAST searches, amplicons retrieved sequences from other delphinid or mammalian taxa as the closest match, providing evidence for successful amplification of the target locus.

Heterozygous nucleotide positions of the *actin* intron were determined objectively with the program Mutation Surveyor (SoftGenetics, State College, Pennsylvania). This software identifies with 99% accuracy heterozygous nucleotide positions, by employing an algorithm that incorporates measures of peak height, peak intensity, and background noise from ABI electropherograms. Putative heterozygous positions identified with Mutation Surveyor were cross-verified by examination of raw electropherogram data in Sequencher. Only cross-verified sites were used in subsequent determination of allelic variation at the locus. Allele and genotype frequencies of *actin* were determined statistically with the program PHASE version 2.1 [27,28]. Three independent chains of 1000 interactions each were performed with other parameters as default. Only those alleles and genotypes resolved with > 90% posterior probabilities were used in subsequent analyses.

#### Diversity indices and models of evolution

Arlequin version 2.00 [29] was used to estimate haplotype diversity (i.e., gene diversity) ( $h$ ) and nucleotide diversity ( $\pi$ ) [30]. Standard error of these estimates was determined from a null distribution generated from 10000 random permutations of the data. DnaSP version 4.0 [31] was used to determine the number of polymorphic sites ( $S$ ) from aligned sequence data.

**Table 4: A summary of the sample size and source of genetic sequence data used in this study**

Species	Geographic Region	DNA Region	n This study	n GenBank	n Total	GenBank Accessions	
<i>L. obscurus</i>	New Zealand South Africa	Cyt b	15	8	23	EF093048–EF093055*	
			10	27	37	AY257141–AY257145# AY257131–AY257134# AY257130#	
	Argentina		6	25	31	EF093042–EF093047* AY257126–AY257129# AY257146–AY257147# AY257136–AY257140# AY257148–AY257161#	
	Peru		0	78	78		
	<b>TOTAL</b>		31	138	169		
	New Zealand South Africa Argentina Peru		D-loop	244	8	252	EF092962–EF092969*
				68	21	89	AY821622–AY821634^
				10	19	29	EF092956–EF092961* AY821611–AY821621^
				0	118	118	AF113492–AF113496@ AY821573–AY821610^
				<b>TOTAL</b>	322	166	488
New Zealand South Africa Argentina Peru	Actin <sup>a</sup>	48	0	48			
		44	0	44			
		14	0	14			
		0	3 <sup>b</sup>	3 <sup>b</sup>	AF140832–AF140834&		
		<b>TOTAL</b>	106	3	109		
<i>L. obliquidens</i>	Cytb D-loop	3	6	9	EF093036–EF093041*		
		2	8	10	AF113490–AF113491@ EF092950–EF092955*		
	Actin	0	6	6	AF140826–AF140831&		
	<b>TOTAL</b>	5	20	25			

n = number of individuals except where noted. \*Harlin-Cognato and Honeycutt [10]; #Cassens et al. [8]; ^Cassens et al. [14]; &Hare et al. [12]; @Cipriano [13]; <sup>a</sup>n = number of gametes; <sup>b</sup>n = number of individuals, phase not known.

Modeltest version 3.06 [32] was used to test 54 nested hypotheses of nucleotide substitution for each data partition. The Hasegawa, Kishino, and Yano [33] (HKY85) model with a correction for rate variation among sites ( $\alpha = 0.66$ ) and a proportion of invariant sites ( $I = 0.39$ ) was selected as the best fit model for the mtDNA control region. For the *cyt b* gene, the model selected was HKY85 with a correction for rate variation among sites ( $\alpha = 0.003$ ). The actin intron also had HKY85 as the best-fit model, but with equal rates among sites. These best-fit models were used in all analyses that employed a model of evolution.

#### Prediction 1: Peruvian origin

A Bayesian analysis of *cyt b* sequences from *L. obliquidens* and *L. obscurus* (Table 4), and *Lissodelphis borealis* (GenBank Accessions EF093025–EF093028) as an outgroup, was performed in Mr. Bayes version 3.1 [34]. The purpose of this analysis was to: (1) determine the geographical

population at the root of the dusky dolphin origin, (2) provide support for the monophyly of Peruvian population haplotypes, and (3) provide a topology for subsequent estimation of divergence dates. The Bayesian Metropolis-coupled Markov Chain Monte Carlo analysis consisted of two independent searches of  $25 \times 10^6$  steps (1 cold, 3 heated chains to insure adequate mixing) with the best-fit model of substitution for *cyt b* determined *a priori* with Modeltest. The program Tracer version 1.1.1 [35] was used to determine convergence and the burn-in point of chains. Trees prior to convergence were eliminated and a majority-rule consensus tree of the remaining topologies was constructed in PAUP\* version 4.0b10 [36].

#### Prediction 2: Linear dispersal route

We tested the hypothesis of a unidirectional, linear dispersal route by examining the geographic partitioning of genetic variation. The method of Templeton et al. [37] as implemented in the program TCS version 1.18 [38] was

used to construct separate statistical parsimony networks for each of the three data partitions. The statistical parsimony method was chosen because of its ability to infer missing intermediates within the network, which is more appropriate for examining intra-specific relationships than standard phylogenetic methods that assume bifurcating lineages [39,40]. Furthermore, reticulations, or alternative (homoplasious) parsimonious connections, are permitted with this method, thus allowing one to test hypotheses regarding the complex historical processes that shape populations. The final network gives a visual representation of the number of mutations separating any two haplotypes (or alleles). Mitochondrial DNA haplotypes were joined to the network within 95% parsimony confidence limits [38]. Because of its slower rate of coalescence, parsimony confidence limits were expanded to 90% for actin alleles. Actin alleles of *L. obliquidens* were included in the statistical parsimony network to examine the pattern of allelic diversity at the base of the *L. obliquidens*/*L. obscurus* divergence. Reticulations in the actin parsimony network were observed and attributed either to lack of lineage coalescence, homoplasious substitutions, or recombination among sites. Of these, recombination is the most problematic for inferring evolutionary history from nuclear loci. Therefore, the likelihood of recombination among alleles was evaluated with the program Lamarck version 1.2.2 [41].

An analysis of molecular variance (AMOVA) [42] and F-statistics [43] were calculated with Arlequin, version 3.1 [29] to determine amount of genetic variation within and among geographic regions for *cyt b*, control region, and actin data. The significance of these statistics was determined by comparison of observed values to those derived from 10000 random permutations of the data. The "case-control" option in PHASE 2.1 was used to group actin alleles by geographic region and to subsequently test the null hypothesis of random association of alleles among localities. Test for Hardy-Weinberg equilibrium of actin genotypes was performed in Arlequin, version 3.1.

The program MIGRATE [44,45] was used to examine the pattern of dispersal (migration) between geographic regions. Although *cyt b* and d-loop are linked, the rate of evolution of each data partition is different with d-loop being the fastest evolving region of the mammalian mitochondrion. Therefore, the *cyt b* and d-loop data were analyzed independently in order to examine dispersal events over different relative time scales, under the assumption that the d-loop will provide evidence for the most contemporary dispersal/migration events. Each data partition was subjected to a maximum likelihood MCMC search strategy with initial theta values generated from  $F_{st}$  estimates, and evolutionary model parameters determined from MODELTEST. Each search was comprised of a com-

ination of 10 short and 3 long chains with an adaptive heating scheme of 4 chains (temperatures 1.0, 1.2, 1.5, 3.0) and a swap interval of 1 in order to insure adequate mixing among chains. Ten short chains of 200,000 steps were run with a sampling increment of 20, for a total of 10,000 sampled trees per chain. A total of 3 long chains were run for 20,000,000 steps, with a sampling increment of 20 for a total of 100,000 trees sampled.

### **Prediction 3: Dates of divergence**

We estimated dates of divergence between *L. obliquidens*/*L. obscurus* lineages and the isolation of the *L. obscurus* Peruvian population from other geographical regions to determine if historical changes in sea surface temperature, primary productivity, current systems, and the phylogeography of the dusky dolphin are correlated. The Bayesian *cyt b* phylogeny with branch lengths was subsequently used in RHINO version 1.2 [46] to estimate via maximum likelihood the date of divergence and 95% confidence intervals. A previous study of *Lagenorhynchus cyt b* [12] suggests the evolution of this locus is clock-like; therefore dates of divergence were calculated under the assumption of a molecular clock with substitution model parameters predetermined by Modeltest. Two calibration points were used, both strongly corroborated from the fossil record and molecular divergence estimates [47]: (1) Phocoenidae/Monodontidae, 13.0 my; (2) Phocoenida/Platanistidae, 28 myr.

### **Comparative phylogeography of anchovy**

Published *cyt b* sequences ( $n = 58$ ) for Old World (*Engraulis capensis*, *E. japonicus*, *E. encrasicolus*) and New World (*E. mordax*, *E. ringens*, *E. anchoita*) anchovy species were assembled from GenBank (Accessions [AY923766-AY923823](#)) [48]. A Bayesian analysis was performed on a matrix of 465 base pairs, and included *Gonorhynchus greyi* (NC004702), *Chanos chanos* (NC004693), *Sardiops sagax* (AF472586), and *S. caeruleus* (AF472585) to root the phylogeny. The Bayesian Metropolis-coupled Markov Chain Monte Carlo analysis consisted of two independent searches of  $2.0 \times 10^6$  steps (1 cold, 3 heated chains to insure adequate mixing) with a model of substitution referenced in Grant (reference). In order to compare dates of divergence of anchovy species and the dusky dolphin populations, the resulting topology and the program RHINO 1.2 [46] were used to estimate times of divergence of Northern Hemisphere *E. mordax* from Southern Hemisphere *E. ringens*/*E. anchoita* clade, and between western (*E. ringens*) and eastern (*E. anchoita*) South America. The oldest European anchovy fossil is 10 million years old [49], thus this date was used as a calibration point. In addition, a previously published *cyt b* haplotype network [50] was compared to that of the dusky dolphin in order to assess similarities in the geographic distribution of genetic variation. This network, plus additional, previ-

ously published phylogeographic inferences for anchovy (i.e., [6,50]) were summarized and compared to the phylogeographic history of the dusky dolphin.

### Authors' contributions

ADHC designed the study, collected tissue samples, gathered molecular data, performed data analyses, and authored the manuscript. TMM assisted with tissue sample collection and reviewed drafts of the manuscript. BW assisted with project design, support, and management, and reviewed drafts of the manuscript. RLH provided guidance for molecular data collection and analysis, assisted with project design, and helped to draft the manuscript.

### Acknowledgements

This study was funded in part with a Doctoral Dissertation Improvement Grant (DDIG 0300480) from the National Science Foundation to ADHC and RLH. Tissue samples were collected in part with funding to BW from the Earthwatch Center for Field Research, and the National Geographic Society Committee for Research and Exploration. We offer a special thank you to C. S. Baker for his mentorship during the initiation of this project, and for gracious use of his laboratory for data collection at the University of Auckland. J. Berkel provided temporary lab space to ADHC in Kaikoura at the Edward Percival Field Station, University of Canterbury, New Zealand. Tissues from free-living dolphins were collected pursuant to the Marine Mammal Protection Act of New Zealand with permission from the New Zealand Department of Conservation, and with approval of Animal Use Protocol committees from the University of Auckland, New Zealand, and Texas A&M University, USA. Tissue samples from *Lissodelphis borealis* and *Lagenorhynchus obliquidens* were provided by the National Marine Mammal Tissue Bank, which is maintained in the National Biomonitoring Specimen Bank at NIST, and which is operated under the direction of NMFS with the collaboration of USGS, USFWS, MMS, and NIST through the Marine Mammal Health and Stranding Response Program. We acknowledge the U.S. Fish and Wildlife Service (USFWS), U.S. Geological Survey (USGS), National Marine Fisheries Service (NMFS), National Institute of Standards and Technology (NIST), the Mineral Management Service (MMS), the National Marine Mammal Tissue Bank (NMMTB), and the specimen collector for use of the banked tissues.

### References

- CLIMAP: **The surface of ice-age Earth.** *Science* 1976, **191**:1131-1136.
- Gersonde R, Abelman A, Brathauer U, Becquey S, Bianchi C, Cortese G, Grobe H, Kuhn G, Niebler HS, Segl M, Sieger R, Zielinski U, Fütterer DK: **Last glacial sea surface temperatures and sea ice extent in the Southern Ocean (Atlantic-Indian sector): A multiproxy approach.** *Paleoceanography* 2003, **18**(3):.
- Paul A, Schafer-Neth C: **Modeling the water masses of the Atlantic Ocean at the Last Glacial Maximum.** *Paleoceanography* 2003, **18**:3.1-3.26.
- Parrish RH, Srerria R, Grant WS: **The monotypic sardines, *Sardina* and *Sardinops*: their taxonomy, distribution, stock structure and zoogeography.** *Can J Fish Aquat Sci* 1989, **46**:2019-2036.
- Bowen BW, Bass AL, Rocha LA, Grant WS, Robertson DR: **Phylogeography of the trumpettfishes (*Aulostomus*): Ring species complex on a global scale.** *Evolution* 2001, **55**(5):1029-1039.
- Grant SW, Bowen BW: **Living in a tilted world: climate change and geography limit speciation in Old World anchovies (*Engraulis*: *Engraulidae*).** *Biological Journal of the Linnean Society* 2006, **88**:673-689.
- Pichler FB, Robineau D, Goodall RNP, Meyer MA, Olavarria C, Baker CS: **Origin and radiation of Southern Hemisphere coastal dolphins (genus *Cephalorhynchus*).** *Mol Ecol* 2001, **10**:2215-2223.
- Cassens I, Van Warebeek K, Best PB, Crespo EA, Reyes J: **The phylogeography of dusky dolphins (*Lagenorhynchus obscurus*): a critical examination of network methods and rooting procedures.** *Mol Ecol* 2003, **12**:1781-1792.
- Van Warebeek K, Van Bree PJH, Best PB: **On the identity of *Prodelphinus petersii* (Lutken, 1889) and records of dusky dolphin *Lagenorhynchus obscurus* (Gray, 1828) from the southern Indian and Atlantic Oceans.** *South African Journal of Marine Science* 1995, **16**:25-35.
- Harlin-Cognato AD, Honeycutt RL: **Multi-locus phylogeny of dolphins in the subfamily Lissodelphininae: character synergy improves phylogenetic resolution.** *BMC Evolutionary Biology* 2006, **6**:87.
- LeDuc RG, Perrin WF, Dizon AE: **Phylogenetic relationships among the delphinid cetaceans based on full cytochrome b sequences.** *Marine Mammal Science* 1999, **15**:619-648.
- Hare MP, Cipriano F, Palumbi SR: **Genetic evidence on the demography of speciation in allopatric dolphin species.** *Evolution* 2002, **56**(4):804-816.
- Cipriano F: **Antitropical distributions and speciation in dolphins of the genus *Lagenorhynchus*: a preliminary analysis.** In *Molecular Genetics of Marine Mammals Volume Special Publication 3*. Edited by: A. E. Dizon SJCWFP. Cambridge, MA, International Whaling Commission; 1997:305-316.
- Cassens I, Van Warebeek K, Best PB, Tzika A, Van Helden AL, Crespo EA, Milinkovitch M: **Evidence for male dispersal along the coasts but no migration in pelagic waters in dusky dolphins (*Lagenorhynchus obscurus*).** *Mol Ecol* 2005, **14**:107-121.
- Harlin AD, Markowitz T, Baker CS, Würsig B, Honeycutt RL: **Genetic structure, diversity, and historical demography of New Zealand's dusky dolphin (*Lagenorhynchus obscurus*).** *Journal of Mammalogy* 2003, **84**(2):702-717.
- Cipriano F: **Behavior, occurrence patterns, feeding ecology, and life history of dusky dolphins (*Lagenorhynchus obscurus*) off Kaikoura, New Zealand.** University of Arizona; 1992.
- Gaskin DE: **Distribution of delphinidae (Cetacea) in relation to sea surface temperatures off eastern and southern New Zealand.** *New Zealand Journal of Marine and Freshwater Research* 1968, **2**:527-534.
- Würsig B, Würsig M: **Behavior and ecology of the dusky dolphin, *Lagenorhynchus obscurus*, in the South Atlantic.** *Fishery Bulletin* 1980, **77**:871-890.
- Van Warebeek K: **Geographic variation and sexual dimorphism in the skull of the dusky dolphin, *Lagenorhynchus obscurus* (Gray, 1828).** *Fishery Bulletin* 1993, **91**:754-774.
- Pudsey CJ, Howe JA: **Quaternary history of the Antarctic Circumpolar Current: evidence from the Scotia Sea.** *Mar Geol* 1998, **148**(1-2):83-112.
- Sugden DE, Bentley MJ, Cofaigh CO: **Geological and geomorphological insights into Antarctic ice sheet evolution.** *Phil Trans Roy Soc A-Math Phys Eng Sci* 2006, **364**(1844):1607-1625.
- Rabassa J, Coronato A, Bujalesky G, Salemme M, Roig C, Meglioli A, Heusser C, Gordillo S, Roig F, Borromei A, et al.: **Quaternary of Tierra del Fuego, southernmost South America: an updated review.** *Quat Int* 2000, **68-71**:217-240.
- Maldonado A, Barnolas A, Bohoyo F, Galindo-Zaldivar J, Hernandez-Molina J, Lobo F, Rodriguez-Fernandez J, Somoza L, Vazquez JT: **Contourite deposits in the central Scotia sea: the importance of the Antarctic Circumpolar Current and the Weddell Gyre Flows.** *Paleogeogr Paleoclimatol Paleocool* 2003, **198**(1-2):187-221.
- Gill PC, Ross GJB, Dawbin WH, Wapstra H: **Confirmed sightings of dusky dolphins (*Lagenorhynchus obscurus*) in southern Australian waters.** *Marine Mammal Science* 2000, **16**:452-459.
- Baker CS, Cipriano F, Lento GM, Palumbi SR: **Whale and dolphin products for sale in Japan and Korea, 1993-95.** Scientific Committee of the International Whaling Commission; 1996.
- Maddison WP, Maddison DR: **MacClade: Analysis of phylogeny and character evolution.** 3.0th edition. Sunderland, MA, Sinauer Associates, Inc.; 1992.



27. Stephens M, Smith NJ, Donnelly P: **A new statistical method for haplotype reconstruction from population data.** *American Journal of Human Genetics* 2001, **68**:979-989.
28. Stephens M, Donnelly P: **A comparison of Bayesian methods for haplotype reconstruction.** *American Journal of Human Genetics* 2003, **73**:1162-1169.
29. Schneider S, Kueffer JM, Roesslo D, Excoffier L: **Arlequin: An exploratory population genetics software environment.** *Genetics and Biometry Lab, University of Geneva, Switzerland* Version 1.0 edition. 1997.
30. Nei M: **Molecular Evolutionary Genetics.** New York, Columbia University Press; 1987.
31. Rozas J, Rozas R: **DnaSP version 3: an integrated program for molecular population genetics and molecular evolution analysis.** *Bioinformatics* 1999, **15**:174-175.
32. Posada D, Crandall KA: **MODELTEST: testing the model of DNA substitution.** *Bioinformatics* 1998, **14**(9):817-818.
33. Hasegawa M, Kishino H, Yano T: **Dating of the human-ape splitting by a molecular clock of mitochondrial DNA.** *Journal of Molecular Evolution* 1985, **21**:160-174.
34. Huelsenbeck JP, Ronquist F: **MRBAYES: Bayesian inference of phylogeny.** *Bioinformatics* 2001, **17**:754-755.
35. Drummond AJ, Rambaut A: **TRACER, v.1.1.1.** *University of Oxford, United Kingdom* 2004 [<http://evolve.zoo.ox.ac.uk/software.html>].
36. Swofford DL: **PAUP\* Phylogenetic Analysis Using Parsimony (\*and other methods).** 4th edition. Sunderland, MA, Sinauer and Associates; 1999.
37. Templeton AR, Sing CF: **Cladistic analysis of phenotypic associations with haplotypes inferred from restriction endonuclease mapping IV. Nested analyses with cladogram uncertainty and recombination.** *Genetics* 1993, **134**:659-669.
38. Clement M, Posada D, Crandall KA: **TCS: a computer program to estimate gene genealogies.** *Mol Ecol* 2000, **9**(10):1657-1660.
39. Crandall KA: **Intraspecific cladogram estimation: accuracy at higher levels of divergence.** *Systematic Biology* 1994, **43**(2):222-235.
40. Posada D, Crandall KA: **Intraspecific gene genealogies: trees grafting into networks.** *TREE* 2001, **16**(1):37-45.
41. Kuhner MK, Yamato J, Felsenstein J: **Estimating effective population size and neutral mutation rate from sequence data using Metropolis-Hastings sampling.** *Genetics* 1995, **140**:1421-1430.
42. Excoffier L, Smouse PE, Quattro JM: **Analysis of molecular variance inferred from metric distances among DNA haplotypes: application to human mitochondrial DNA restriction data.** *Genetics* 1992, **131**:479-491.
43. Wright S: **Isolation by distance.** *Genetics* 1943, **28**:114-138.
44. Beerli P, Felsenstein J: **Maximum-likelihood estimation of migration rates and effective population numbers in two populations using a coalescent approach.** *Genetics* 1999, **152**:763-773.
45. Beerli P, Felsenstein J: **Maximum likelihood estimation of a migration matrix and effective population sizes in n subpopulations by using a coalescent approach.** *Proc Nat Acad Sci (USA)* 2001, **98**:4563-4568.
46. Rambaut A: **RHINO v.1.2.** *University of Oxford, United Kingdom* 2003 [<http://evolve.zoo.ox.ac.uk/software.html>].
47. Nikaido M, Matsuno F, Hamilton H, Brownell Jr. RL, Cao Y, Ding W, Zuoyan Z, Shedlock AM, Fordyce RE, Hasegawa M, Okada N: **Retroposon analysis of major cetacean lineages: the monophyly of toothed whales and the paraphyly of river dolphins.** *Proceeding of the National Academy of Science, USA* 2001, **98**:7384-7389.
48. Grant WS, Leslie RW, Bowen BW: **Molecular genetic assessment of bipolarity in the anchovy genus *Engraulis*.** *J Fish Biol* 2005, **67**(5):1242-1265.
49. Grande L, Nelson G: **Interrelationships of fossil and recent anchovies (Teleostei: Engraulidae) and description of a new species from the Miocene of Cyprus.** *American Museum of Natural History, Novitates* 1985, **2826**:1-16.
50. Grant WS, Bowen BW: **Shallow population histories in deep evolutionary lineages of marine fishes: Insights from sardines and anchovies and lessons for conservation.** *Journal of Heredity* 1998, **89**(5):415-426.
51. Lawrence KT, Liu Z, Herbert TD: **Evolution of the Eastern Tropical Pacific through Plio-Pleistocene glaciation.** *Science* 2006, **312**:79-83.
52. Beerli P: **Migrate: documentation and program, part of LAMARC. Version 2.0. Revised December 23, 2004.** 2004 [<http://evolution.genetics.washington.edu/lamarc/index.html>]. Downloaded: April 26, 2007

Publish with **BioMed Central** and every scientist can read your work free of charge

"BioMed Central will be the most significant development for disseminating the results of biomedical research in our lifetime."

Sir Paul Nurse, Cancer Research UK

Your research papers will be:

- available free of charge to the entire biomedical community
- peer reviewed and published immediately upon acceptance
- cited in PubMed and archived on PubMed Central
- yours — you keep the copyright

Submit your manuscript here:  
[http://www.biomedcentral.com/info/publishing\\_adv.asp](http://www.biomedcentral.com/info/publishing_adv.asp)

