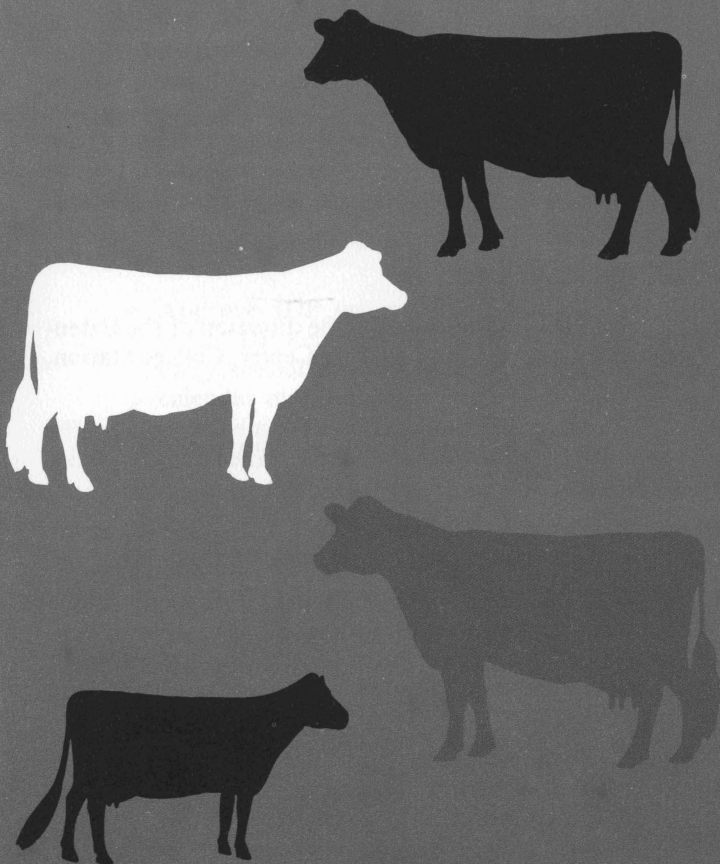


TEXAS JUNIOR

DAIRY PRODUCTION

AWARDS PROGRAM

5-18-82
L-960
5m
Rev



TEXAS JUNIOR DAIRY PRODUCTION AWARDS PROGRAM

THE TEXAS JUNIOR DAIRY PRODUCTION AWARDS PROGRAM offers a challenging and rewarding experience for Texas dairy youth. This program is sponsored by the following state purebred dairy cattle associations in cooperation with the Texas Agricultural Extension Service:

- *Texas Brown Swiss Association*
- *Texas Guernsey Breeders Association*
- *Holstein-Friesian Association of Texas*
- *Texas Jersey Cattle Club*

The purpose of the Texas Junior Dairy Production Awards Program is to teach the importance of production testing—a fundamental of good dairy management—and to add strength to dairy project achievement records. Cash awards are provided by each of the above state dairy breed organizations to owners of purebred animals representing their respective breed.

GENERAL RULES

1. The program is under the direction of the Extension dairy specialist, 218 Kleberg Center, College Station, Texas 77843.

2. Any bona fide 4-H or FFA member who is the owner of a registered Brown Swiss, Guernsey, Holstein, or Jersey is eligible to participate.

3. Animals must be owned and registered in the name of the boy or girl at the time of freshening.

4. Each animal must be enrolled properly in the State Extension dairy office within 60 days after calving. Enrollment is made by form D-427, available through your local county Extension office or State Extension dairy office.

5. A youngster may enroll as many animals as desired; however, only the top producing entry will be eligible for an award in a given contest year.

6. Each contest year begins September 1 and ends August 31. All 305-day records completed within these dates are considered for the contest year concerned.

7. DHI, DHIR, AMPMFT, and alternate AMPM records are acceptable. Also, if the herd is not on DHI test, Junior Dairy Production (JDP) records will be

acceptable when obtained in accordance with the requirements of this program.

8. Records are limited to 305 consecutive days and begin the seventh day after calving, counting the day of calving as the first day. Lactation periods of less than 260 days are not considered.

9. Permanent cow pages, DHI-203, are obtained from the DRPC at Raleigh for each cow that should complete a 305-day record within the contest year. If a cow completes lactation of less than 305 days but more than 260, the Junior needs to notify the Extension Dairy Specialist so that the cow will be included in the contest year. JDP records are reported by county Extension agent or vocational-agriculture teacher following each monthly test.

10. Award winners are determined by the pounds milkfat produced on a twice a day milking mature equivalent (2xME) basis as determined by the respective breed associate.

JUNIOR DAIRY PRODUCTION RECORDS

Junior Dairy Production (JDP) records may be used by 4-H and FFA members when the herd is not on DHI test. This type of record must be obtained from regular monthly test conducted in the following manner:

1. **Monthly test.** A 24-hour test covering milkings shall be made on each animal between the tenth and twentieth (inclusive) of each month. The test must be conducted by a competent person other than the owner of the animal or members of his immediate family. The Junior shall not be told in advance the exact date his animal is to be tested.

2. **Weighing.** Accurate scales or meters approved for DHI work should be used in weighing the milk. Read the milk weight at eye level and record to the nearest tenth (0.1) of a pound. In the case of meters, report 1/4 pound reading as .3 and 3/4 pound reading as .8.

3. **Sampling milk.** When scales are used, the milk should be mixed thoroughly by pouring it from one container to another at least three times. Take the sample immediately after mixing. Approximately 1/4 cup of milk from each milking is sufficient for a sample. Mix the evening and morning samples into a composite sample.

Greater accuracy is obtained by using proportionate quantities from each milking to make the composite sample.

4. **Testing for butterfat.** The percentage of fat is determined by testing the composite sample of the evening and morning milk. Butterfat test should be made by an experienced person at the milk plant or samples sent to the Texas DHI lab for milkfat analysis.

5. **Monthly Test Reports.** The Monthly Test Report is mailed to the Extension dairy specialist, 218 Kleberg Center, College Station, Texas 77843 by not later than the 25th of each month. Each report must be signed by the person(s) conducting the test and approved by the county agent or vocational agriculture teacher.

6. **Lactation records.** Lactation records are calculated by the State Extension dairy specialist and mailed to the supervising county agent or vocational agriculture teacher. The computation of production credits is based on test day milk weights and milkfat test. When milk weights and milkfat test appear abnormal, adjustment of credits is made as follows:

a. **Milk weights.** When test day milk weights vary more than 25 percent from an average of the preceding and succeeding month, the milk weight will be disregarded and the average will be used to compute the credits for the month.

b. **Percent butterfat.** When after the first monthly test the percentage of butterfat varies more than 1.5 percent (i.e. 3.5 to 5.0) above or below the average of the preceding month's test, the average of the two months will be used.

RESPONSIBILITIES

The success of the Texas Junior Dairy Production Awards Program is dependent upon each individual doing his job promptly and completely. A list of responsibilities of those concerned with the program follows:

1. *The Junior owner:*

- Study and understand all rules and requirements of the Texas Junior Dairy Production Awards Program.
- Fill out entry form D-427 and submit to county agent or vocational agriculture teacher immediately after each animal freshens.

- Provide accurate scales or meters for weighing milk.
- Make registration papers available to person conducting test so that animal can be correctly identified.
- Notify Extension dairy specialist that an animal completed a lactation of less than 305 days but greater than 260 days.

2. *County Agricultural agent or vocational teacher:*

- Provide information on the program and distribute necessary record forms and material.
- Be sure that each animal is properly enrolled and that entry form D-427 is mailed to Extension dairy specialist, College Station, Texas 77843, within 60 days after animal freshens.
- If herd is not on DHI, arrange for qualified person(s) to conduct monthly JDP test. Remember, this person cannot be a member of the Junior's immediate family. Be sure that such person understands the correct procedure of weighing milk, taking samples and conducting butterfat test.
- Approve JDP test reports (Monthly Test Reports-JDP Record, DS-5) and mail to Extension dairy specialist no later than the 25th of each calendar month.

3. *Person(s) conducting test (JDP):*

- Conduct monthly test between the 10th and 20th (inclusive) of each month.
- Identify animal being tested by checking tattoo and color markings against registration papers.
- Weigh milk, take samples, and conduct butterfat test in accordance with approved procedures.
- Fill out test report (Monthly Test Report-JDP Record, DS-5) and submit to county agent or vocational agriculture teacher immediately after each test is made.

4. *Extension dairy specialists:*

- Give guidance to the program in the State.
- Develop informational material and report forms needed.
- Obtain completed records (305 days or less) from DRPC at Raleigh.

- Compute 305 Production credits on animals completing JDP records and report these credits to county agents and vocational agriculture teachers concerned.
- Announce results of the Texas Junior Dairy Production Awards Program as soon after the close of each test year as possible.

Educational programs conducted by the Texas Agricultural Extension Service serve people of all ages regardless of socioeconomic level, race, color, sex, religion or national origin.

Cooperative Extension Work in Agriculture and Home Economics, Texas A&M University and the United States Department of Agriculture cooperating. Distributed in furtherance of the Acts of Congress of May 8, 1914, as amended, and June 30, 1914.