

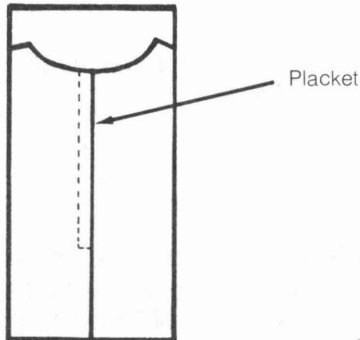
YOU AND YOUR CLOTHES
Basic Construction

L-1389

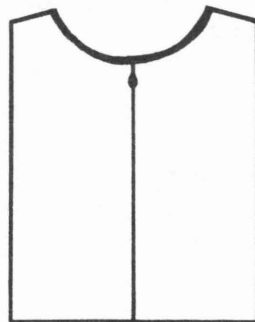


ZIPPERS

Margret Ann Vanderpoorten*



Standard Zipper



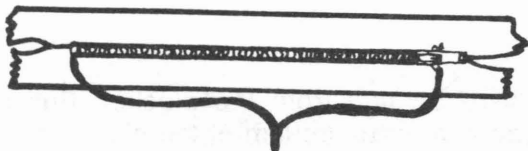
Invisible Zipper

There are two kinds of zippers — standard and invisible.

The standard zipper is set into a placket and a row of stitching shows from the outside.

The invisible zipper is put in a seam and no stitching is seen from the outside.

STANDARD ZIPPER

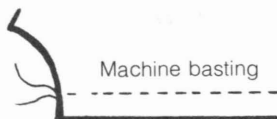


Measure teeth

Measure the length of the zipper teeth. The opening on pants and skirts for the zipper needs to be the length of the zipper teeth plus $\frac{3}{4}$ inch.

Neckline openings need to be the length of the zipper teeth plus 1- $\frac{1}{8}$ inches.

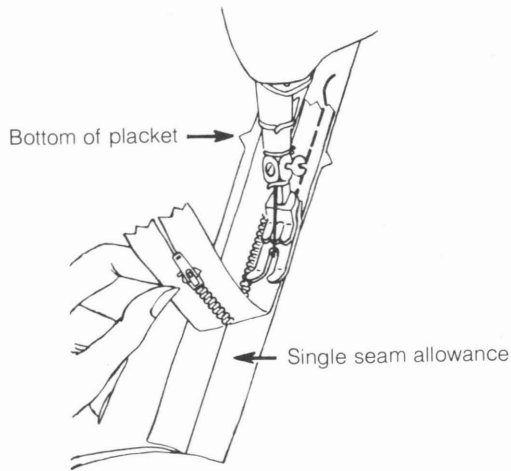
Measure the amount needed on the seam allowance where the zipper will be put in. Mark the seam allowance to show where the bottom of the zipper teeth will be.



Machine basting

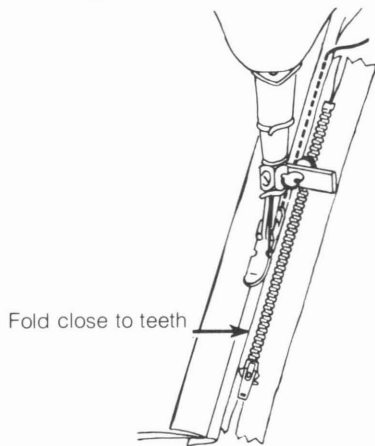
Sew the seam up to the mark you made where the placket starts. Use the longest stitch on your machine to baste the placket closed. Press the seam open.

*Extension clothing specialist, The Texas A&M University System.



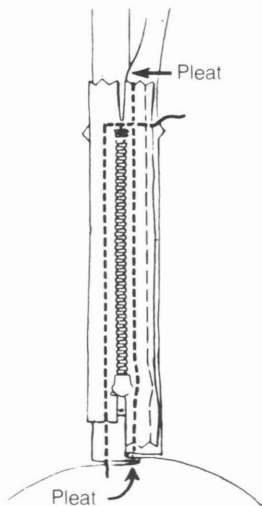
With top of garment nearest you, extend the right-hand seam allowance. Pin or baste zipper to seam allowance with bottom of teeth at the bottom of the placket. Keep edge of teeth next to the seam line. Using longest stitch, sew zipper tape to seam allowance.

Put the zipper foot on your sewing machine and change to normal stitch length.



Turn zipper face up, forming a fold in the seam allowance. Fold should be close to zipper teeth but should not touch. Topstitch fold to zipper tape.

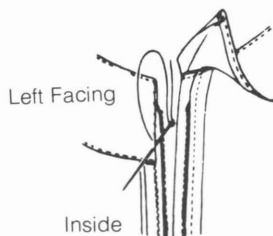
Spread garment flat and turn zipper face down over the seam. A pleat forms in the placket when the zipper is flat.



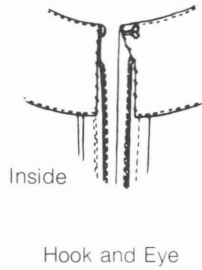
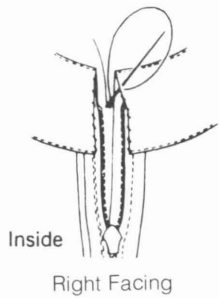
Stitch across the bottom of the zipper and then up the tape through all layers of fabric. Be sure to keep the tape straight at the top.

Remove basting from the placket. Pull the thread end at the bottom of the placket to the inside and tie a knot.

After attaching the facing and understitching, finish the ends this way:



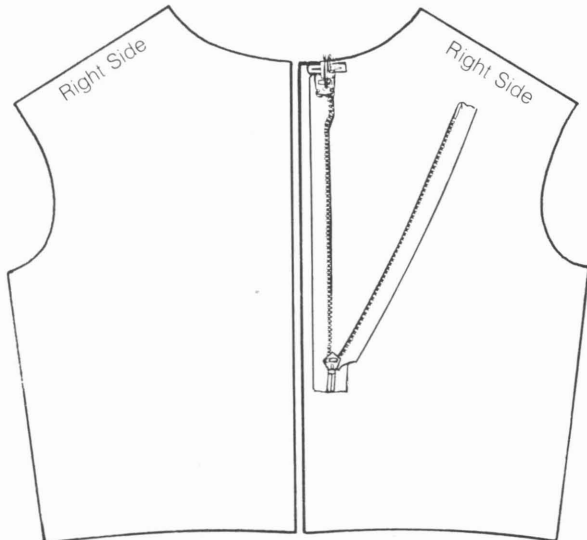
Trim away excess bulk and turn under seam allowance of left facing. Stitch facing to zipper tape by hand so that it doesn't show from the outside.



Turn under seam allowance of right facing, curving to fit around zipper teeth. Trim off extra fabric. Stitch to zipper tape by hand.

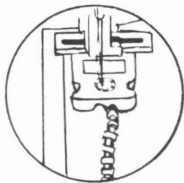
Sew a hook and eye at the top of the placket.

INVISIBLE ZIPPER

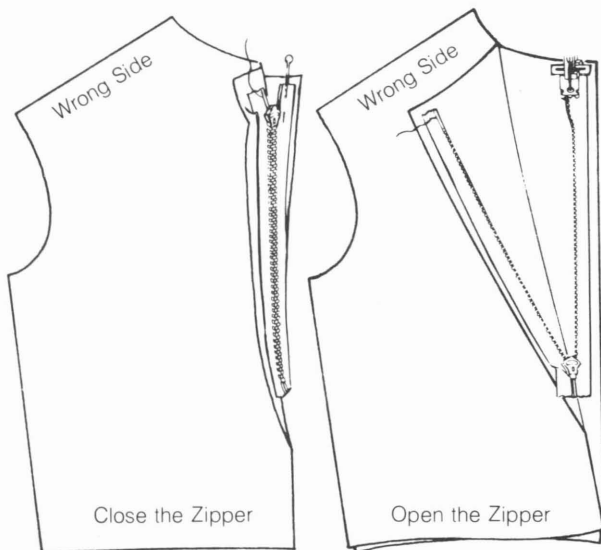


Do not sew any of the seam before putting in an invisible zipper. Use the zipper foot designed for the kind of zipper you have.

Mark the seam line. Place opened zipper face down on the right side of the fabric. Teeth should be on the 5/8-inch seam line and the tape should be 1/4 inch from the cut edge of the fabric. Top of tape should be 1/4 inch from neckline.



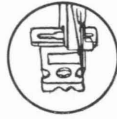
Be sure the needle is in the center of the special zipper foot. Turn teeth up and place groove of foot over teeth. Stitch from top of garment down to slider. Backstitch about 1/4 inch.



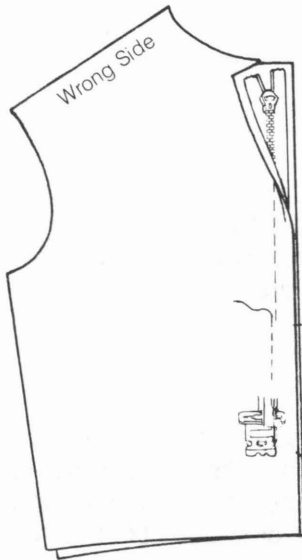
Close the zipper. Pin unstitched side of tape to the right side of the other piece of fabric. Be sure tape is 1/4 inch from neck edge and teeth are on 5/8-inch seam line. Pin tape in place with one or two pins.

Open the zipper. Place the zipper foot groove over the teeth. Remove pins, being careful not to move zipper off the fabric. Stitch from top to bottom until foot touches slider. Backstitch.

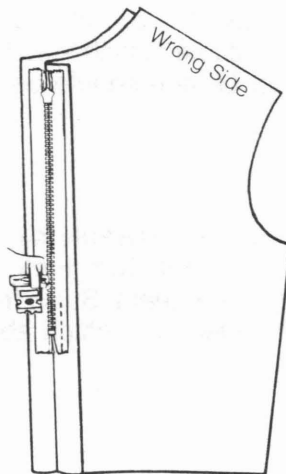
Close the zipper. About 1 inch of zipper will be left unattached at bottom. Pin seam allowance together from bottom of zipper to lower end of seam.



Adjust the zipper foot so needle is beside foot in the notch.



Lower needle into fabric about $\frac{1}{4}$ inch above and $\frac{1}{16}$ inch to the left of the stitching that holds the zipper in. Lower zipper foot. Stitch to end of garment seam. Where you started, pull both threads to one side and tie a knot. You may wish to reinforce this seam by stitching it again for about $\frac{1}{2}$ inch at end nearest zipper.



To fasten ends of zipper tape, stitch through tape and seam allowance on one side. Repeat on the other side.

Portions of this publication were adapted from *Zip It! Zippers — Their Construction and Application*, North Dakota Cooperative Extension Service, and *The Unique Invisible Zipper*.

Educational programs conducted by the Texas Agricultural Extension Service serve people of all ages regardless of socio-economic levels, race, color, sex, religion or national origin.

Cooperative Extension Work in Agriculture and Home Economics, The Texas A&M University System and the United States Department of Agriculture cooperating. Distributed in furtherance of the Acts of Congress of May 8, 1914, as amended and June 30, 1914.