

Seniors Think About. . .

FURNITURE



CAREFULLY SELECTED AND ARRANGED FURNITURE CAN INCREASE COMFORT AND PLEASURE

BE SURE CHAIRS HAVE. . .

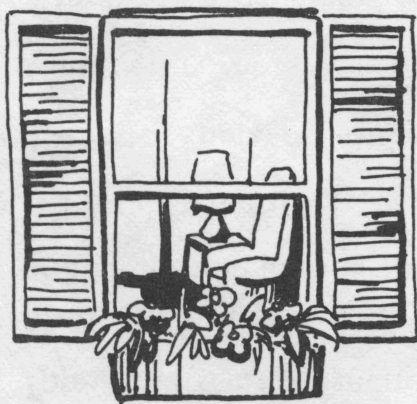
- Good body **support** and **leverage**
 - Front seat - 13½ inches to 15 inches from the floor
 - Seat slant - about 1½ inches from front to back
 - Seat depth - no more than 20 inches in depth
 - Chair back - extending beyond the width of shoulders, tall enough to provide neck rest, inclining backward at the top about 5 inches.
- Flexible, adjustable, sturdy, stable and maneuverable **features**
- Rounded **corners**
- Ventilated, fire proof, non-allergenic, easily cleaned and stain resistant **covering**
- **Armrests** for additional comfort and leverage
- Sturdy **table** at side, at least elbow height when seated, with large surface and storage

A MULTIPURPOSE TABLE NEEDS. . .

- Large **surfaces** that are durable, easily cleaned, heat proof, stain resistant and have no sharp corners
- A sturdy pedestal **base**
- **Minimum** space of 26 inches between floor and underside of table, or a comfortable height for you

BEDS SHOULD HAVE. . .

- **Privacy** from living and cooking areas
- **Headboard** and **footboard** extending above mattress 12 inches
- Top of **mattress** 17 inches to 21 inches above the floor
- **Mattress** tuftless, damp proof, water resistant, soil and dust resistant, flameproof, non-allergenic and easily ventilated
- **Adjustable features**
- Plenty of **space** around two long sides and one short side
- **Rounded** corners
- A **table** at head 4 inches to 6 inches above mattress, reading lamp, wall hook for your robe and an eating tray add extra convenience
- A good **view**



... FURNITURE SHOULD BE ...

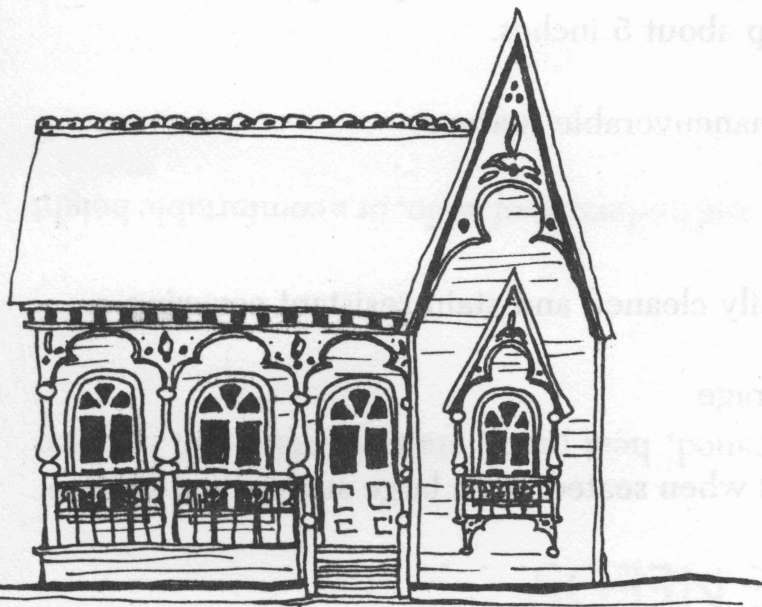
● Pleasing in design

● Mobile

● Safe

● Comfortable

● Easy to care for



Anna Marie Gottschalk
Former Extension housing and
home furnishings specialist,
The Texas A&M University System.

Educational programs conducted by the Texas Agricultural Extension Service serve people of all ages regardless of socio-economic levels, race, color, sex, religion or national origin.

Cooperative Extension Work in Agriculture and Home Economics, The Texas A&M University System and the United States Department of Agriculture cooperating. Distributed in furtherance of the Acts of Congress of May 8, 1914, as amended, and June 30, 1914.

10M—8-74

H&HF 2-1