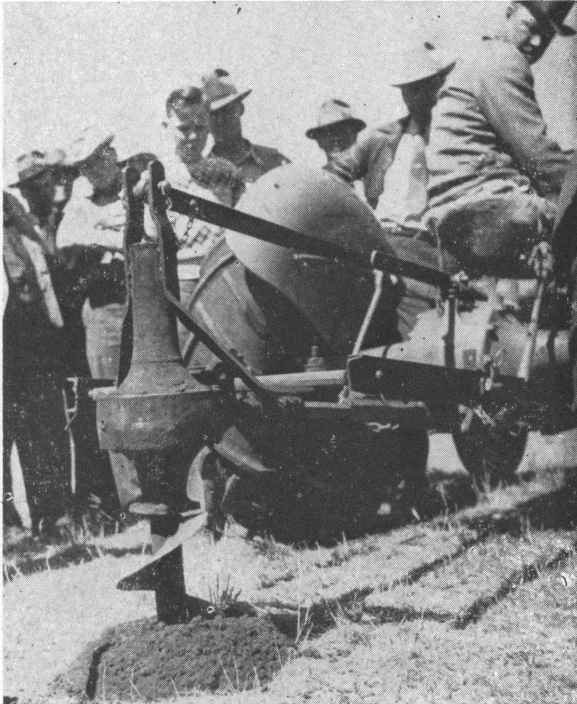
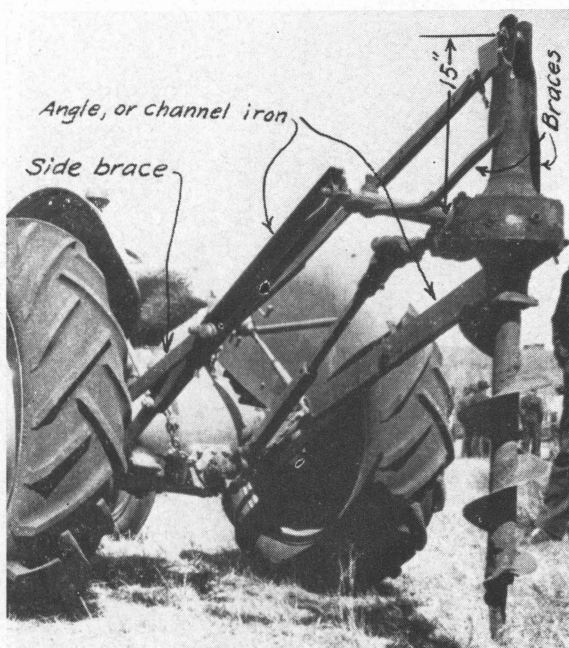


# Time and Work Savers

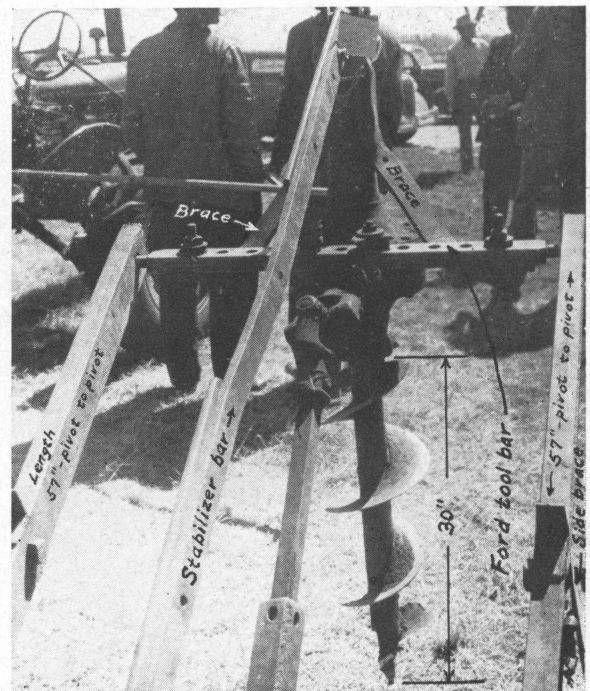
## TRACTOR POST-HOLE DIGGER



This view of the digger shows how it looks from the tractor driver's seat. Only one operator is needed. The device is easy to attach to a Ford tractor and can be lowered or raised readily.



This post-hole digger was developed by Jack Woodson, foreman of the Circle Bar Ranch in Lubbock County. It digs holes 30 inches deep at the rate of two per minute. This machine was built entirely of scrapped materials. The only cost was for welding.



The rear end of a Model A Ford provides a basis for this digger. The top axle is cut off flush with the housing and welded to the housing to keep it from turning. A pipe to which a gin auger is welded is fitted over the remaining axle. Cutting blades are welded on at the tip to make the digger take the ground.

The tool bar is regular Ferguson-Ford equipment. It is securely bolted to the auto differential housing with a "U" bolt. The regular stabilizer bar is lengthened to a total of 57" by setting in a piece of strap iron. The regular Ford lifting arms are lengthened with pieces of 3" x 3/16" channel iron, or angle iron, to a total length of 57".