

AGRICULTURAL AND MECHANICAL COLLEGE OF
TEXAS

EXTENSION SERVICE

CHARLES H. ALFORD, DIRECTOR

COOPERATIVE EXTENSION WORK IN AGRICUL-
TURE AND HOME ECONOMICS

(The Agricultural and Mechanical College of Texas and
the United States Department of Agriculture
Cooperating)

Distributed in furtherance of the Acts of Congress of
May 8th and June 30th, 1914.

L-3

COLLEGE STATION, TEXAS

1922

TERRACES

A GOOD INVESTMENT

An Investment of \$2.50 per Acre in Terraces
Frequently Yields an Annual Dividend
of \$10.00 per Acre.

Here are some reasons why farmers are ter-
racing their farms:

To stop gullying.

To stop sheet washing.

To hold rainfall on the land. (Notice:
West Texas Farmers).

To prevent loss of crop stand.

To prevent washing off of vegetable mat-
ter.

To keep hillside sand from covering bot-
tom land.

To hold commercial fertilizer or manure
on the land.

To keep hillside soil from filling ditches
on bottom land.



IS YOUR FARM WASHING AWAY LIKE THIS?

Here are some suggestions as to how to go about terracing your farm:

Look field over before starting.

Consider future changes in fields.

Select best outlets.

Run lines with an instrument.

Set up stakes before running plow.

Avoid sharp bends in plowing line.

Begin building on the top terrace.

Build broad base terraces.

Don't start more than will be finished.

Build terrace ridges in the cheapest way.

Push dirt down hill if tools will permit.

Build dams in gullies higher than terrace.

Get dirt for dams just above the terrace.

Make terrace outlets wide and shallow.

Watch for breaks, and repair at once.

Run rows with the terrace.

Plant something on terrace ridges.

After terracing, and also before, some of the following practices, selected with respect to soil and climate conditions, will aid in holding and rebuilding your soil:

Plow or list across the slope instead of up and down hill.

Practice deep fall and winter plowing.

Plow under stalks and other vegetation.

Grow legumes.

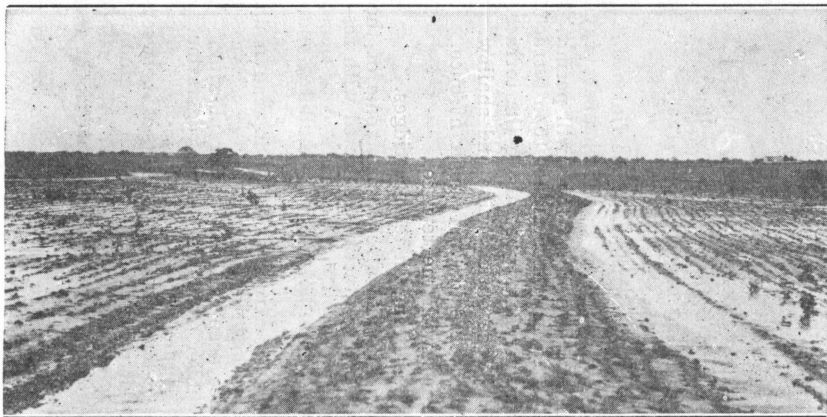
Plant velvet beans and cowpeas between wide rows of corn or grain sorghum.

Rotate row crops with a sowed crop, using cane, sudan grass, or sweet clover for poor soils.

Plant winter cover crops, such as burr clover or small grain.

Scatter straw stacks and barnyard manure.

Use commercial fertilizers.



IS YOUR FARM PROTECTED BY TERRACES LIKE THIS?

Further information on terracing may be obtained from your County Agricultural Agent. Bulletins on terracing may be obtained from Charles H. Alvord, Director, College Station, Texas.

JNO. P. MCCULLOUGH,
Ass't County Agent,
DALLAS, TEXAS