

CHIGGER CONTROL

Condensed From U.S.D.A. Leaflet No. 302

By

*Extension Entomologists
Texas A. & M. College System*

Chiggers, or red bugs, are among the most annoying pests of man found in this country. They are the larvae of very small mites. Several kinds of chiggers are found in the United States.

Contrary to popular belief, chiggers do not burrow into the skin, but attach like ticks, usually in skin depressions at the base of hair. Persons may become heavily infested without realizing it until itching begins several hours later. The poison secreted by the chigger causes severe irritation, which may continue for some time, and a secondary infection frequently follows.

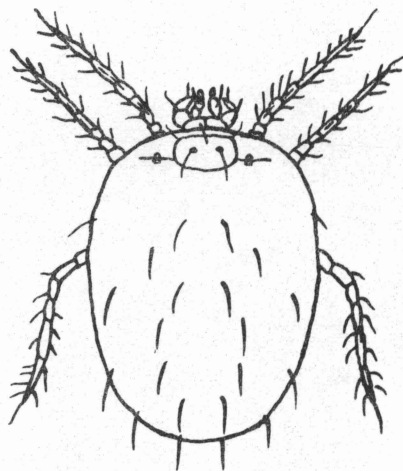
Chiggers are most often found in low, damp places well covered with vegetation, such as margins of lakes or streams, shaded woods, high grass or weeds, fruit orchards, and berry patches. They are frequently severe pests, however, in relatively dry areas, such as on lawns, golf courses, and in parks.

How to Locate Chiggers

To locate an infested area, place a piece of black cardboard edgewise on the ground where you suspect the presence of chiggers and carefully observe the cardboard for a few minutes. If you see small yellowish or pinkish mites moving rapidly over the cardboard and accumulating on the upper edge, you have no doubt located a chigger-infested place.

Control

Sulfur dust applied to infested grounds has been used for some time to control chiggers. In recent years, however, a number of the newer insecticides, including chlordane, lindane, and toxaphene, have been found to be more effective. They may be obtained commercially as dusts, wettable powders, and



emulsifiable concentrates. The last two must be mixed with water and applied as sprays. Emulsion sprays will usually give the best results.

How to Apply Dust

Apply dusts containing five percent of chlordane or toxaphene at the rate of 40 pounds per acre, or about one pound per 1,000 square feet, and dusts containing one percent of lindane at 25 pounds per acre, or one pound to about 1,800 square feet.

How to Apply Sprays

Apply these sprays at the rate of 20 to 25 gallons per acre, or about one gallon to 1,800 square feet.

Treat ground litter, soil, and the lower parts of plants with these sprays.

The concentrations likely to be available and the amounts required to make the finished sprays suggested for use are given on the reverse side.

DILUTION TABLE FOR CONCENTRATES

	Quantity to make - -	
	100 gallons	5 gallons
Chlordane and toxaphene		
Wettable powder	Pounds	Pounds
25%	32	1.6
42%	20	1.0
Emulsifiable Concentrate	Gallons	Pint
40%	2.5	1.0
50%	2.0	0.8
65%	1.5	.6
Lindane		
Wettable powder	Pounds	Ounces
25%	4	3.2
Emulsifiable concentrate	Quarts	Pint
20%	2.5	0.25
25%	2.0	.2

PRECAUTIONS

Handle all these insecticides with care and avoid unnecessary exposure to them. If you spill the concentrated material on the skin, wash it immediately.

Issued by
The Agricultural Extension Service
The Texas A. & M. College System and
The United States Department of Agriculture
G. G. Gibson, Director, College Station, Texas.