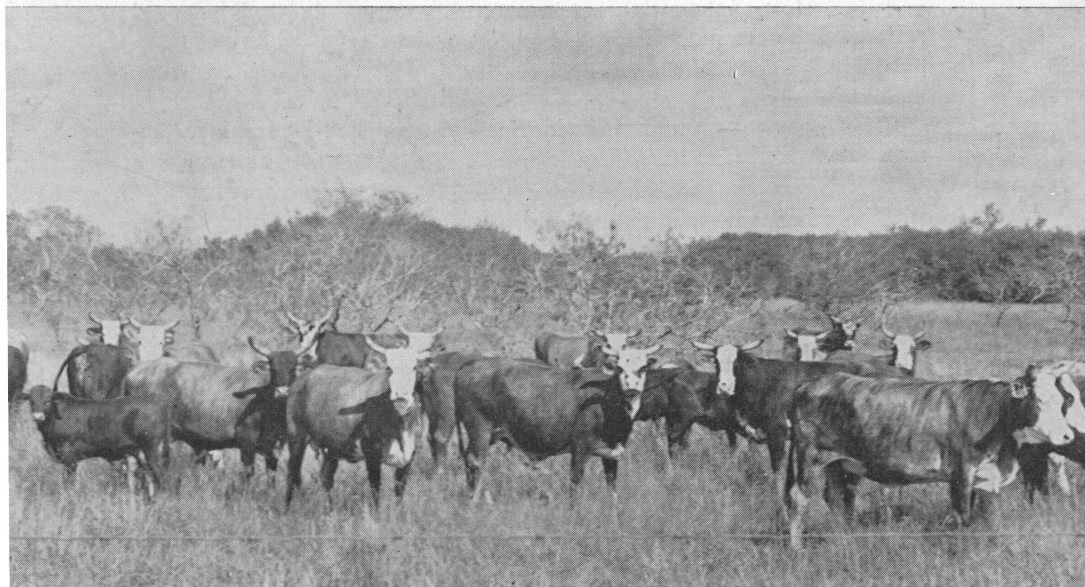


MINERALS FOR BEEF CATTLE



Cattle Fed A Phosphorus Supplement

Issued by
The Agricultural Extension Service
The Texas A. & M. College System and
The United States Department of Agriculture
G. G. Gibson, Director, College Station, Texas

MINERALS FOR BEEF CATTLE

A. L. Smith, Extension Animal Husbandman and Uel D. Thompson, Assistant
Extension Animal Husbandman in collaboration with
John H. Jones, Professor of Animal Husbandry and John K. Riggs, Associate Professor of
Animal Husbandry, Texas A. & M. College System

Beef cattle need minerals.* They need sodium, chlorine, phosphorus, calcium, magnesium, manganese, iron, copper, cobalt, iodine, boron and zinc. Most of these they get in natural pasturage and well-balanced rations. The ones most likely to be needed are sodium, chlorine, phosphorus and calcium.

The first two—sodium and chlorine—are supplied by feeding common salt.

The other two—phosphorus and calcium—quite frequently require special measures. This bulletin is intended to explain when, where, and how phosphorus and calcium should be supplied as mineral supplements.

Good pasturage, depending on the soil and climate, may supply all of the minerals essential to the well-being of beef cattle. If the minerals are present in the soil, they pass from the soil through the pasture forage to the animals.

But adequate amounts of the essential minerals are not always supplied from natural sources. Soils become worn out. Certain minerals may be lacking in the soil in the first place. When plant growth is stopped by drouth or cold, the forages weather, losing much of their feed value. In such cases, additional minerals are needed to make up the difference.

Mineral supplements are no cure-all, but at times they are necessary for successful grassland and feedlot cattle production. Minerals will not make up the deficiency in production caused by a shortage of feed.

*For simplicity this publication refers to mineral nutrients, mineral compounds or elements, as "minerals."

Table 1. Calcium and phosphorus composition of certain mineral supplements

Mineral supplement	Calcium		Phosphorous	
	Percent	Grams per pound	Percent	Grams per pound
Bone meal, raw, feeding.....	22.7	103	10.1	46
Bone meal, special steamed.....	28.7	130	13.9	63
Bone meal, steamed.....	30.0	136	13.9	63
Defluorinated superphosphate.....	28.3	128	12.3	56
Dicalcium phosphate.....	26.5	120	20.5	93
Disodium phosphate (crystalline)...	8.6	39
Limestone.....	38.3	174
Monocalcium phosphate.....	16.0	72	24.0	109
Monosodium phosphate (anhydrous).....	25.0	113
Oyster shell flour.....	36.9	167
Spent bone black.....	22.0	100	13.1	59

Reprinted in part from RECOMMENDED NUTRIENT ALLOWANCES FOR BEEF CATTLE, National Research Council, September 1945.

PHOSPHORUS DEFICIENCY

The Texas Agricultural Experiment Station has shown that phosphorus is the mineral most commonly lacking in Texas pastures. This deficiency can be damaging and expensive unless it is made up by a phosphorus supplement.

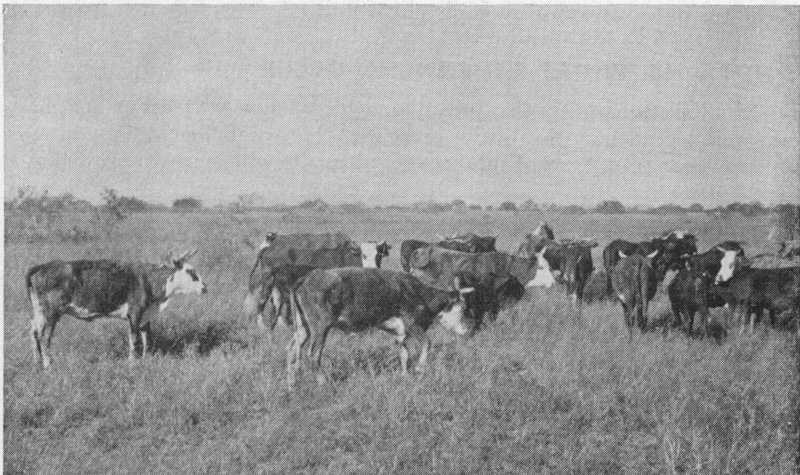


Fig. 1. These cattle did not receive a phosphorus supplement and show the effects of a phosphorus deficiency.

The cattle in Fig. 1 tell one part of the story; the cattle on the cover tell the other. Both groups of cattle are of the same age and breeding. The cattle in Fig. 1, however, show the effects of a phosphorus deficiency. Note particularly in the left foreground the "creepy" cow affected with acute phosphorus deficiency. Those on the cover were fed a phosphorus supplement through their water supply.

Behind that "creepy" condition lies a series of contributing factors:

Deficiency of phosphorus in the *soil* results in a
Deficiency of phosphorus in the *grasses*, and this to a
Deficiency of phosphorus in the *animal*.

An early symptom of phosphorus deficiency in cattle noticeable to farmers and ranchmen will be depraved appetite. This condition may lead to the chewing of bones, sticks, stones, old hides, and dead animal materials. The depraved appetite caused by a phosphorus deficiency may result in a secondary disease characterized by paralytic symptoms called "loin disease." This disease is caused by toxins produced by microorganisms of the botulinus type formed in the dead animal material.

The effects of phosphorus deficiency are loss of appetite and weight, decline in milk production and failure to breed; small percentage calf crops and calves light in weight result. With long continued phosphorus deficiency, cows become extremely thin and become lame and stiff at the joints, or "creepy."

On pasturage deficient in phosphorus, cows fed phosphorus supplements may average as much as 200 pounds heavier than cows not fed the supplements. Calves may be from 50 to 70 pounds heavier at weaning age. It is possible to increase the calf crop as much as 30 per cent. Breeding dates are more completely stabilized.

WHEN AND WHERE DEFICIENCIES OCCUR

In all sections of Texas, phosphorus deficiency may occur at times; in some sections, it is always present. Where deficiencies are always present, year-round use of mineral supplements will increase production.

In regions where rainfall is less than 30 inches a year, the young growing grasses are usually rich in phosphorus. But the phosphorus content diminishes with maturity. Dry and mature grasses may be very low in the mineral. In such areas, phosphorus supplement may be necessary at certain times of the year. Generally, however, the deficiency in such areas seldom becomes serious because of the excellent forage during part of the year, and because stockmen in those areas usually feed concentrates which contain phosphorus during the winter. Cottonseed cake and cottonseed long have been known as good feeds for "creepy" cows.

In areas where the soils are most deficient in phosphorus, the phosphorus deficiency becomes much worse when the forage matures, when

cold or drouth stops forage growth, or when the old forage leaches. Experiments have shown that production will increase if phosphorus is supplied by pasture fertilization or by feeding various phosphorus supplements.

CATTLE WILL CONSUME BONE MEAL AND DISODIUM PHOSPHATE (crystalline) WHEN THEY NEED PHOSPHORUS

There is very good evidence that cattle will consume appreciable amounts of bone meal and disodium phosphate (crystalline) when they need phosphorus in addition to that which they may receive from the forage or other feeds. When on good forage and gaining in weight they will consume only small amounts of bone meal or disodium phosphate (crystalline) and salt lick, but when on poor forage, losing in weight and idle, they will consume large amounts.

In Fig. 2 note that the weight of the mature cows forming the herd begins to decline about the first of November each year. Weights continue to decline until about the first of March. However, if cottonseed meal is fed during the winter, weight losses are not so marked. When spring grazing becomes available supplementary feeding is discontinued,

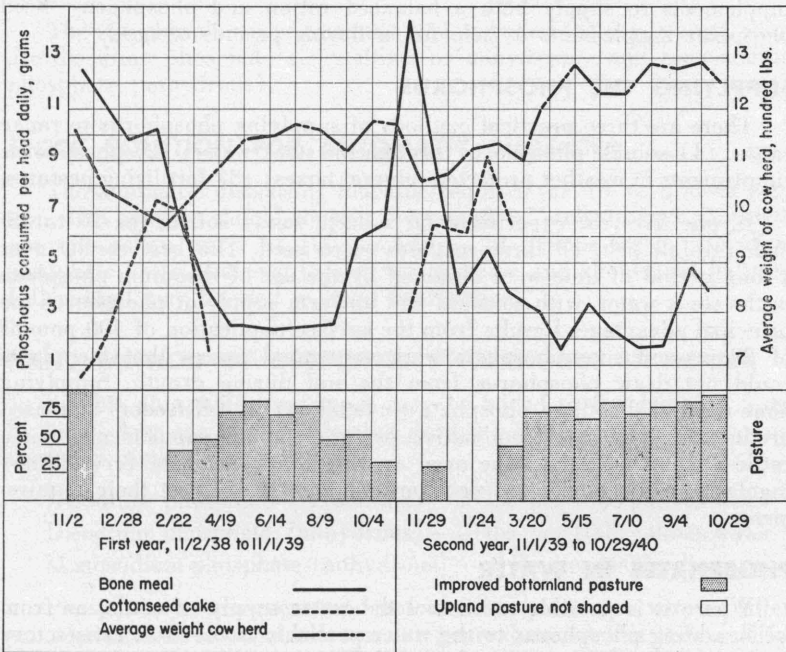


Fig. 2. Average grams of phosphorus consumed in bone meal and cottonseed meal, days of grazing on highly fertilized bottomland pasturage, and average weight of cow herd during a two-year period at the East Texas Pasture Investigations Station, Lufkin, Texas.

and the herd makes rapid increase in weight which is well maintained until fall.

What happened in the consumption of the bone meal or disodium phosphate (crystalline) (2 parts) and salt (1 part) lick during this time? A perfectly natural thing. With poor forage in November and weight losses the cows began to consume a large amount of the lick, but before the period of poor forage was over they began to consume less of the lick when cottonseed cake, a source of phosphorus, was fed. Receiving phosphorus from cottonseed cake, they did not need to eat as much of the bone meal or disodium phosphate (crystalline) and salt lick to get their requirement of phosphorus. But when feeding of cottonseed cake was stopped, the cows did not again begin to consume large amounts of the bone meal or disodium phosphate (crystalline) lick. Why? Because by that time fresh, green forage—clovers grown on high phosphated land—was available, which supplied ample phosphorus.

The graph (Fig. 2), affords a very good and a natural picture of the reaction of cattle to grazing conditions and phosphorus supply. It is applicable in any section of the state. Poor grazing means loss of weight; good grazing = gain in weight; poor grazing = low phosphorus supply; good grazing = ample phosphorus supply. Feed protein supplements to supply both a balanced ration and phosphorus. Feed phosphate supplements to help fill in during periods of need.

SUPPLYING THE PHOSPHORUS

There are three practical methods of supplying phosphorus to range cattle: (1) soluble phosphorus through the stock water; (2) phosphorus supplements in weather protected mineral boxes; (3) fertilizing pastures.

In one five-year experiment on a deep, sandy soil in the 20 to 25-inch rainfall belt, all three methods were used. The best results over a long period of time were obtained by the use of disodium phosphate in the stock water, with constant and uniform supply of phosphorus the principal advantage. Results from the surface application of 400 pounds of 20 percent superphosphate were very good except that the plants could not draw phosphorus from the soil during drouth. Supplying bone meal or disodium phosphate (crystalline) in self-feeders increased production over that from native pasture without supplements. Some cattle did not take the bone meal or disodium phosphate (crystalline) regularly, while others did not consume enough to meet their requirements.

PHOSPHATES IN WATER

Where it is possible to control the water supply of cattle, as from wells, adding phosphorus to the water probably is the most satisfactory method of preventing phosphorus deficiency. The materials may be added to the water troughs by hand, but an automatic dispenser (Fig. 3) has been developed which adds the desired amount of phosphate solu-

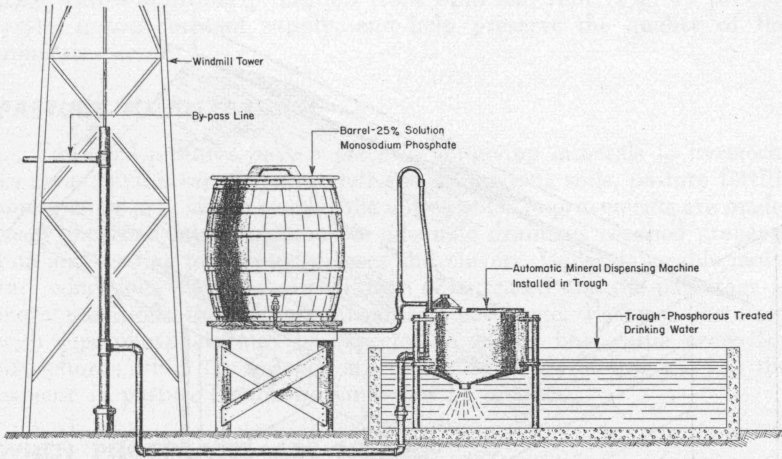


Fig. 3. An automatic dispenser which can be used with almost any type water system.

tion to a given amount of water. It can be used with almost any type of water system.

The two phosphorus compounds recommended for use in stock water are disodium phosphate (crystalline, or anhydrous) and monosodium phosphate (anhydrous).

STOCK SOLUTION FOR AUTOMATIC DISPENSER

The automatic dispensing machine requires the use of a stock solution. This solution should contain $2\frac{1}{2}$ pounds of monosodium phosphate per one gallon water or 100 pounds to 40 gallons water. Disodium phosphate has a tendency to clog the machine and should not be used. Either kind may be used in hand distribution.

HAND METHOD OF SUPPLYING PHOSPHORUS IN WATER

Soluble phosphate compounds may be added to the drinking water by hand. Any one of the following products are recommended for use except in earthen tanks or ponds:

- Disodium phosphate (crystalline)—20 lbs. per 1000 gallons water
- Disodium phosphate (anhydrous)—10 lbs. per 1000 gallons water
- Monosodium phosphate (anhydrous) — 8 lbs. per 1000 gallons water

Phosphorus requirements and water consumption may vary in different regions, but recommendations for general use at this time call for 6.5 grams of phosphorus per 8 gallons of water or 6.5 grams per head daily. This is the proportion most successfully used in the five-year experiment mentioned earlier.

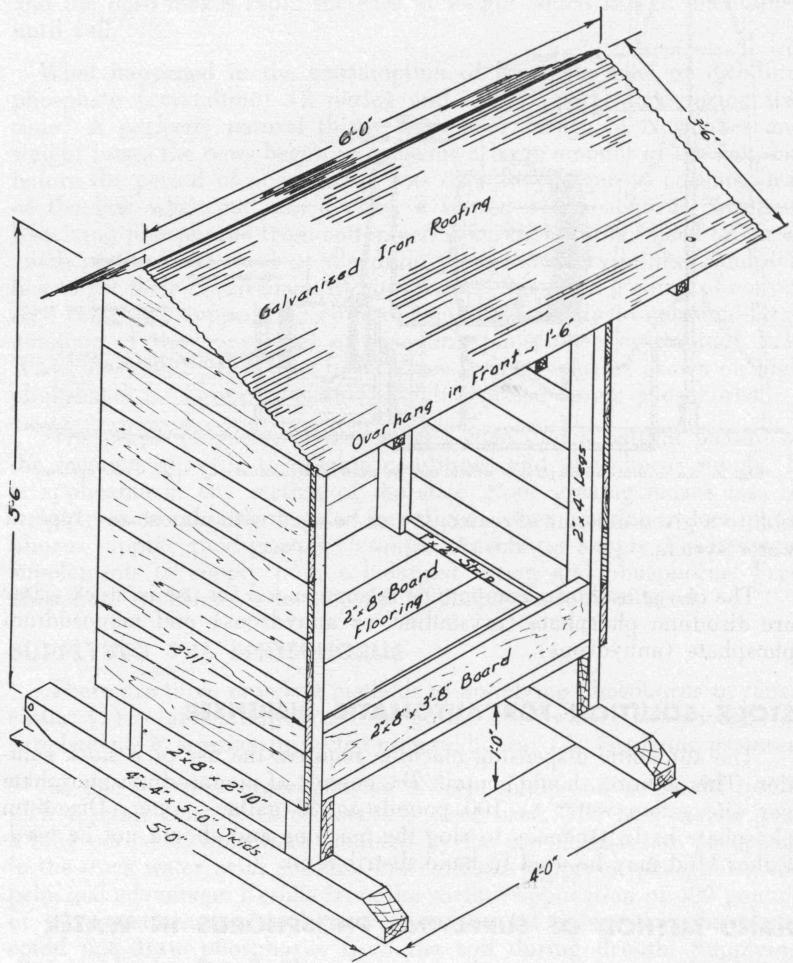


Fig. 4. Mineral boxes prevent waste. Order Blueprint No. 1356.

MINERAL BOXES

Salt or bone meal or disodium phosphate (crystalline), alone or in mixtures, commonly are fed free choice. Bone meal may be fed free choice or mixed with granulated salt. A mixture of two parts feeding bone meal and one part salt by weight is widely recommended. Disodium phosphate (crystalline) can be fed in the same proportions as bone

meal. Boxes affording protection from wind and rain (Fig. 4) prevent waste, insure constant supply, and help preserve the quality of the minerals.

PASTURE FERTILIZATION

Fertilized pastures have a place in supplying minerals to livestock. In areas having very high rainfall and impervious soils, pasture fertilization alone may not be worthwhile unless other improvements are made. Such improvements might include adequate drainage, seedbed preparation and seeding to adapted grasses and clovers. Under favorable moisture conditions the yield of pasturage is increased and the pasturage is more nutritious than from unfertilized pasturage. Pastures fertilized with superphosphate may be expected to supply beef cattle needs for phosphorus while the forages are green. In areas of low rainfall the expense of pasture fertilization may not be justified.

WHEN PHOSPHATES ARE NEEDED

Year-round use of phosphorus supplements is recommended in regions low in phosphorus.

In regions where the soil is not deficient in phosphorus or where pastures are highly fertilized, or the cattle are being fed as much as two pounds of 43 percent protein cottonseed cake daily per head, there is little, if any, need for phosphorus supplements. During late summer and fall, or if the cattle are being poorly wintered, phosphorus supplements probably are needed.

Numerous mineral mixtures have found ready markets and sometimes are used when not needed. Certain mixtures contain very small amounts of phosphorus, and stockmen should check the percentage and cost of the available phosphorus.

Practical stockmen know that pasturage is the principal and cheapest source of most minerals. They also realize the importance of supplementing this pasturage with phosphorus when it is needed.

CALCIUM DEFICIENCY

Pasturage and forage in almost all parts of Texas contain enough calcium. At the same time, the plentiful sunlight provides the Vitamin D necessary to retain the calcium and phosphorus. Rations of grains and grass hays, however, do not contain enough calcium for the growth and fattening of weaned calves, and rickets are found only in barn-reared young calves.

SUPPLYING THE CALCIUM

Pulverized limestone and oyster shell or finely ground limestone containing from 92 to 98 per cent calcium carbonate are the common

calcium supplements. Lumber yard lime is not recommended for use as a calcium supplement since it may not be completely slaked.

Legume hays, such as alfalfa, are high in calcium, compared with grass hays, such as Johnson grass or other sorghums. When cattle are fattened on grain and grass hays, it is advisable to feed about 1/10 pound of limestone flour or pulverized oyster shell daily per head as a calcium supplement. This should be mixed with grain. Fattening rations allowing three to four pounds of alfalfa hay daily per head for yearling or older cattle need not be supplemented. Calves, however, should get the supplement even with the alfalfa, since they need considerable calcium for growth and because they have a limited capacity for hay.

RECOMMENDED DAILY ALLOWANCES

The mineral requirements vary with the age, sex, and purpose of the animal. Table 2 shows the daily requirements for dry feed, calcium and phosphorus for beef cattle.

Table 2. Recommended daily dry feed, calcium and phosphorus allowances for beef cattle*

	Weight in lbs.	Daily feed lbs.	Calcium Ca grams	Phosphorus P grams
Wintering weaned calves	400	11	16	12
	500	13	16	12
	600	15	16	12
Wintering yearlings	600	16	16	12
	700	17	16	12
	800	18	16	12
Wintering bred heifers	700	20	18	16
	800	20	18	16
	900	18	16	15
Wintering mature bred cows	800	22	22	18
	900	20	18	16
	1000	18	16	15
	1100	18	16	15
	1200	18	16	15
Cows nursing calves	900-			
	1000	28	30	24

	Weight in lbs.	Daily feed lbs.	Calcium Ca grams	Phosphorus P grams
Bulls, growth and maintenance	600	16	24	18
	800	18	23	18
	1000	22	22	18
	1200	24	21	18
	1400	26	20	18
	1600	26	18	18
Fattening calves finished as short yearlings	400	12	20	15
	500	14	20	16
	600	16	20	17
	700	18	20	18
	800	20	20	18
Fattening yearlings	600	18	20	17
	700	21	20	18
	800	22	20	19
	900	24	20	20
	1000	26	20	20
Fattening two-year olds	800	24	20	20
	900	26	20	20
	1000	27	20	20
	1100	29	20	20

*Reprinted in part from TAES Bulletin 461 Revised 1947.

Cooperative Extension Work in Agriculture and Home Economics, The Texas A. & M. College System and United States Department of Agriculture Cooperating. Distributed in furtherance of the Acts of Congress of May 8 and June 30, 1914.
20M-5-50-Rev.