

# BASTROP ASSET MAP TOOL

---

## GUIDEBOOK

**Prepared for: BASTROP COMMUNITY CARES**

**Prepared by: TEXAS TARGET COMMUNITIES**

**5/6/2016**

# Asset Mapping

Asset mapping is the process of mapping all the resources and assets of a community. It is a geospatial map, providing information about the resources available in the community. Some of the functions of asset maps are:

- Recognizing the existing resources to uncover the gaps in services
- Navigate through the available resources by creating a comprehensive list of all the necessary information
- Helps in focusing community strengths and resources
- Helps in the utilizing the resources and create ideas on how to build on these assets to address community needs

“Asset: An item of value owned; a quality, condition, or entity that serves as an advantage, support, resource, or source of strength

Mapping: To make a map of; to show or establish the features or details of, with clarity like that of a map; to make a survey of, or travel over for, as if for the purpose of making a map”

- Mapping Community Assets Workbook by Diane Dorfman

## Asset Mapping Tool

### ArcGIS

ArcGIS Online is an online, collaborative web Geographic Information System (GIS) which can be used to create and share maps, scenes, apps, layers, analytics, and data. Esri's secure cloud is used to add items and publish web layers.

Pros:

1. More flexible with data manipulation
2. Control over visualization and how to display map
3. Easy to retrieve the original through the host copy
4. Map can be embedded on a website

Cons:

1. Skills required for initial setup
2. Esri account and login required (free)
  - a. Organizational account required for publishing.

Example :

<http://tampabay.maps.arcgis.com/apps/webappviewer/index.html?id=1f714359247e4129b61db38b5b7025bd>

# Bastrop Service Types Included in the Asset Map

S.N.	Service	Count
1	Abuse Assistance	7
2	Animal Rescue	2
3	Crime Prevention	2
4	Disability Assistance	5
5	Educational Resource	46
6	Elderly Resource	3
7	Emergency Response	3
8	Employment	4
9	Family Resource	10
10	Food Resource	14
11	Free/Discounted items	7
12	Government	24
13	Health Resource	13
14	Helpline	1
15	Homeless Assistance	3
16	Law enforcement	6
17	Legal Assistance	3
18	Recovery and Rehab	3
19	Transportation	4
20	Utility/ Housing Assistance	7
21	Various	2
22	Veteran Assistance	3
23	Youth Resources	4
<b>Total</b>		<b>176</b>

# Fields

The fields are the categories through which you can arrange or search the services. These fields can be applied as filters to get specific search results.

For example, you can look into the city field or the zip code to get services on specific city or zipcode.

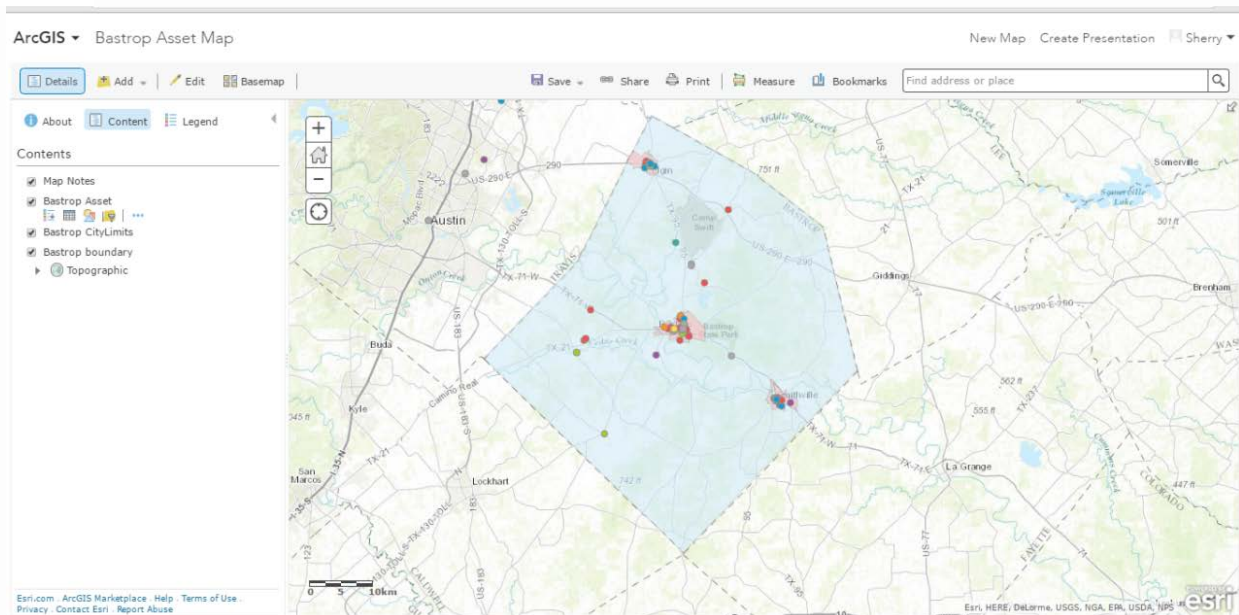
1. Object ID
2. Agency
3. Address, City, State
4. ZIP
5. Latitude and Longitude
6. Description
7. Phone
8. Hotline Phone
9. Fax
10. Email
11. Website
12. Hours
13. Geographic Area
14. Intake Procedure
15. Intake Requirements
16. Eligibility
17. Fee Amount
18. Languages Spoken
19. Taxonomy Name
20. Age
21. Spanish Spoken
22. Type of Service
23. Sub Group of Services

# STEPS TO USE THE ASSET MAP

## Access the Map

- Open ArcGis online at : <https://www.arcgis.com/home/signin.html>
- Sign in using the Esri Username and Password

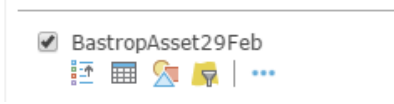
- Go to 'My Contents' and open the map with the Bastrop Asset layer in the map viewer.
- Click Details and click Contents.
- The opened file should look like this.



- Each of the dots represents a service, and can be clicked to see further information.
- The different colors represent the types of services. This is just the way the map is displayed and can be changed according to the desired attribute (such as certain color according to the location, or city)

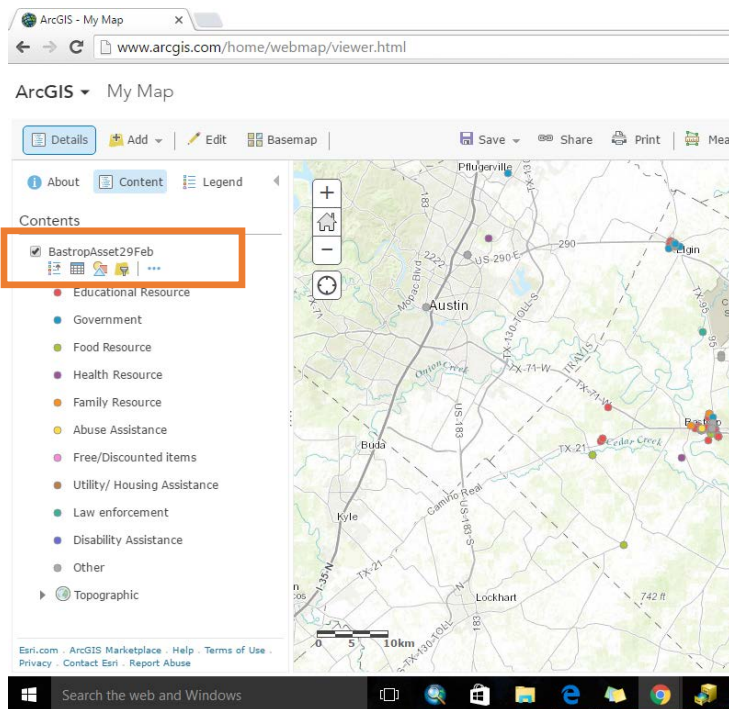
# Tools

There are tools available in ArcGIS Online that help you view, edit and navigate through the map.



## Legend

- The first tool will open the legend which will open the categories in the content list with their respective colors.



## Table

- The table tool will open the attribute table which consists of all the points and their attributes such as location, description, hours, etc.

ArcGIS - My Map

www.arcgis.com/home/webmap/viewer.html

ArcGIS My Map New Map Jeevasmi

Details Add Edit Basemap Save Share Print Measure Bookmarks 503 Southwest Pkwy, College Station, Texas, USA

About Content Legend

Contents

- BastropAsset29Feb
- Topographic

BastropAsset29Feb (193 features, 0 selected)										
Object_ID	Agency	Address	City	State	ZIP	Latitude	Longitude	Description	Phone	Hot
6	Adult Protective Services	3809 Loop 150 E	Bastrop	TX	78,602	30.11	-97.32	Investigates abuse, neglect, and exploitation of adults who are elderly or have disabilities	512-321-3995	
7	Advocacy Outreach	199 Depot Street	Elgin	TX	78,621	30.35	-97.37	Advocacy Outreach offers educational opportunities like Family Literacy, ESL and other classes.	512-281-4179	
8	Austin Community College (ACC)	902 W. 2nd St.	Elgin	TX	0	30.35	-97.38	Provides education through	512-825-3934	

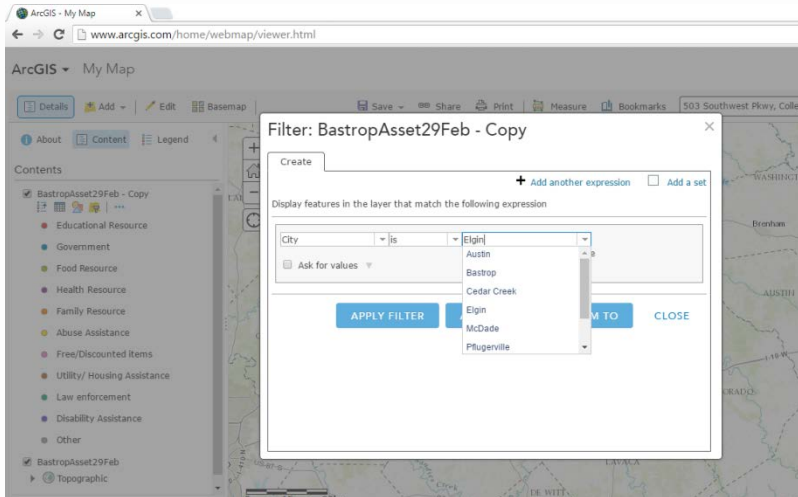
Eri.com - ArcGIS Marketplace - Help - Terms of Use - Privacy - Contact Esri - Report Abuse

Search the web and Windows

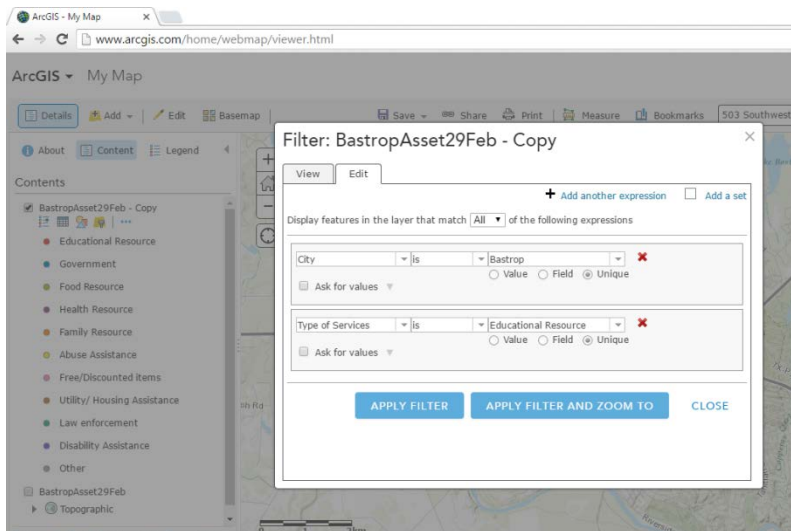
1:34 PM 4/20/2016

## Filters

A filter presents a focused view of a feature layer in a map. By limiting the visibility of features in a layer, you can reveal what is important. For example, you might create a filter on a location layer so only services in Elgin appear.

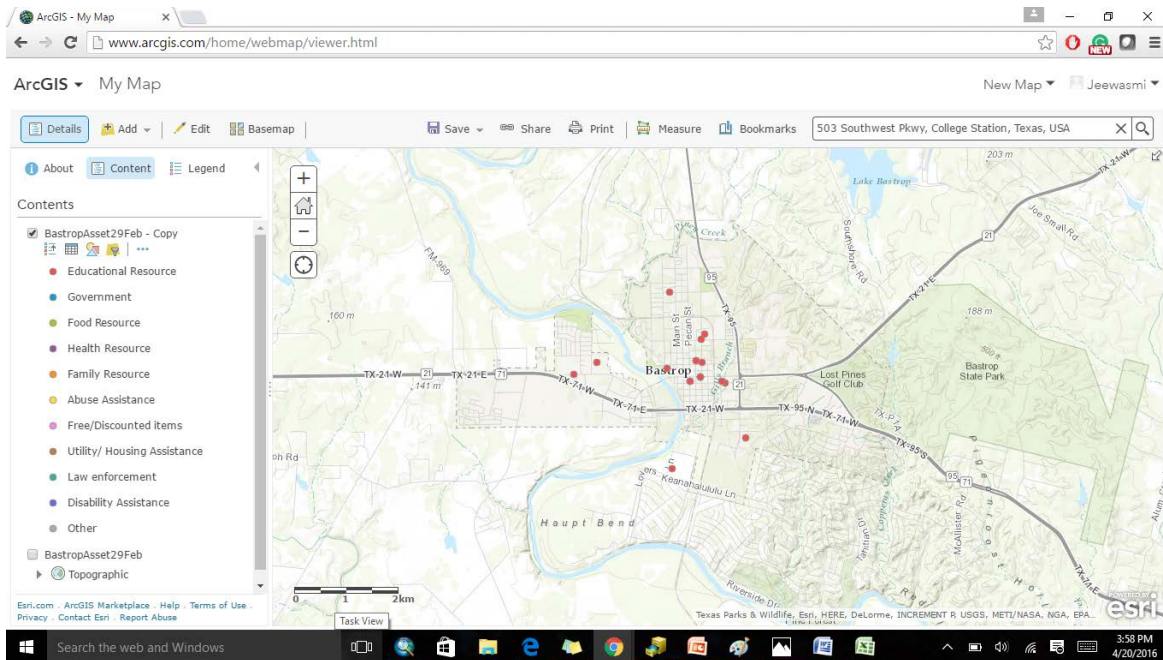


Multiple filters can be used such that you can locate a particular service, for example: filter on location city Bastrop and the service type: Education resource.




This would display all the education resources in Bastrop City.






## Create filters

You can create filters on hosted feature layers, ArcGIS Server feature service layers, and ArcGIS Server map service layers that have associated attribute data; you cannot create filters on map notes or features imported from a file. Only the features that meet the expression criteria will be visible in the map.

1. Open the map in the map viewer
2. Click Details and click Contents
3. Browse to the feature layer you want to filter and click Filter 
4. Create your definition expression.
  - Expressions use the general form of <Field\_name> <Operator> <Value, Field or Unique>
  - You can create one expression, multiple expressions, or one or more sets of expressions. A set is a grouping of expressions, for example, Type is education resources and City is Bastrop.

- If you have more than one expression, choose to display features in the layer that match 'All' or 'Any' of your expressions. 'All' requires that each of the criteria you have specified must be true. 'Any' means that at least one of your expressions must be true for the features to display.
- For the field part of the expression, click the Field drop-down arrow, then choose the field you want to query against from the list.
- For the operator part of the expression, click the Operators drop-down arrow and choose an operator from the list (is, is not, <, >).
- If you want to filter based on a specific value, choose Value and enter a value in the field. The input box varies depending on the field type.
- If you want to compare the value in one field versus the value in another field, choose Field, click the drop-down arrow, and choose the field for your expression.
- If you want to filter based on a specific value in the field you've selected for your expression, choose Unique and select a unique value from your field. Unique value filters require a 10.1 or later map service layer. The Unique option does not appear if you are creating a filter on a 10.0 or earlier service layer.
- If you created an expression based on values or a unique value, you can set up an interactive expression. You cannot ask for values on expressions based on a field. Click the box to the left of Ask for values. Enter information about the value in the Prompt field and a hint in the Hint field.
- To delete an expression in the filter, click the Delete button  to the right of your expression.

5. Click Apply Filter to enable the filtered view on the map.


Tip: If you created a filter for a hosted feature layer, you have the option to Apply Filter And Zoom To, which enables the filtered view and redraws the current map to show the filters.

6. To undo the filter and show all the features in the layer, click Remove Filter.

#### Considerations for filters

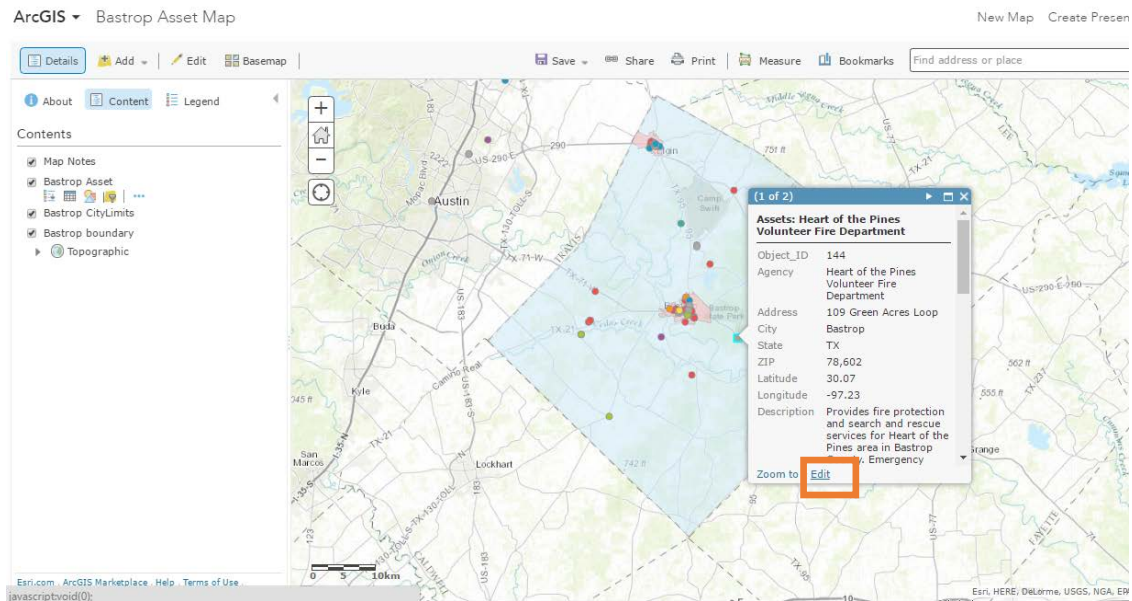
- You can create filters on hosted feature layers, ArcGIS Server feature service layers, and ArcGIS Server map service layers that have associated attribute data. You cannot create filters on map notes or features imported from a file.
- To change a field name, edit the field alias through a pop-up configuration.
- You can create interactive expressions based on values or unique values. You cannot create interactive expressions based on a field.

The filters can be changed or edited or removed going back to the filter tool. You can access the filter to view the expressions, change any expressions in the filter, and edit the filter. Any changes you make only apply to the view of the map.

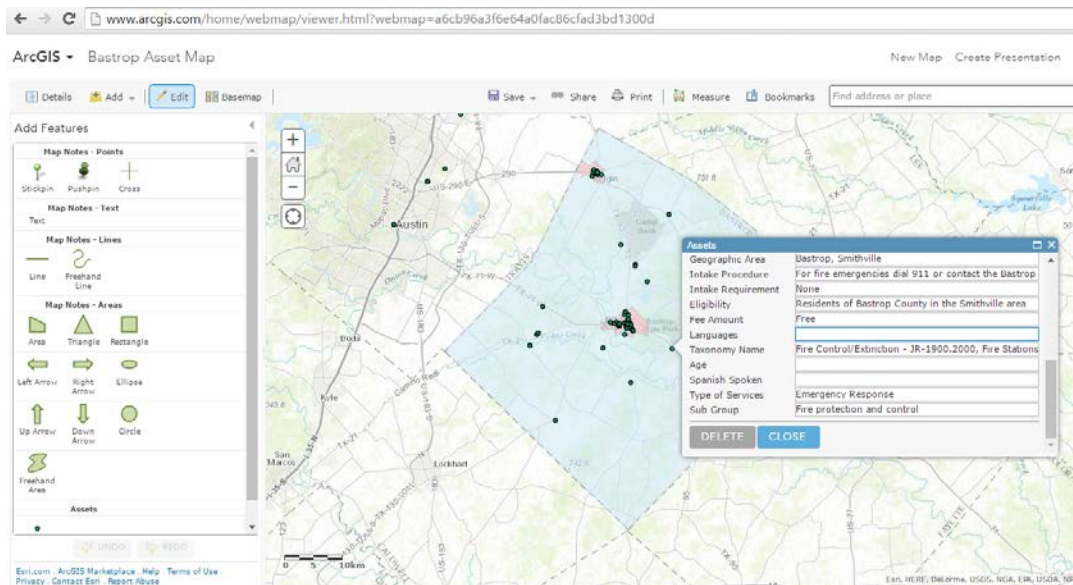
1. Browse to the feature layer with the existing filter and click Filter 
2. Change, edit, or view the filter
  - On the Change tab, you can apply a new value for an existing i filter. Enter a new value for the expression and click the Apply Filter button. The map display updates with the new filtered view of the feature layer. The tab also displays friendly versions of the expressions in the filter. This tab appears if there are interactive expressions in the filter. If the filter does not contain interactive expressions, you see a View tab instead with friendly versions of the expressions in the filter.
  - On the Edit tab, you can update the expressions. See the Create filters section for details on how to update the expressions.

## Editing Existing Assets

- Click on the point or the asset you want to edit.
- A window with all the information on the asset will appear with edit button at the end. Click edit



- The attributes can be changed by typing on the respective field space.



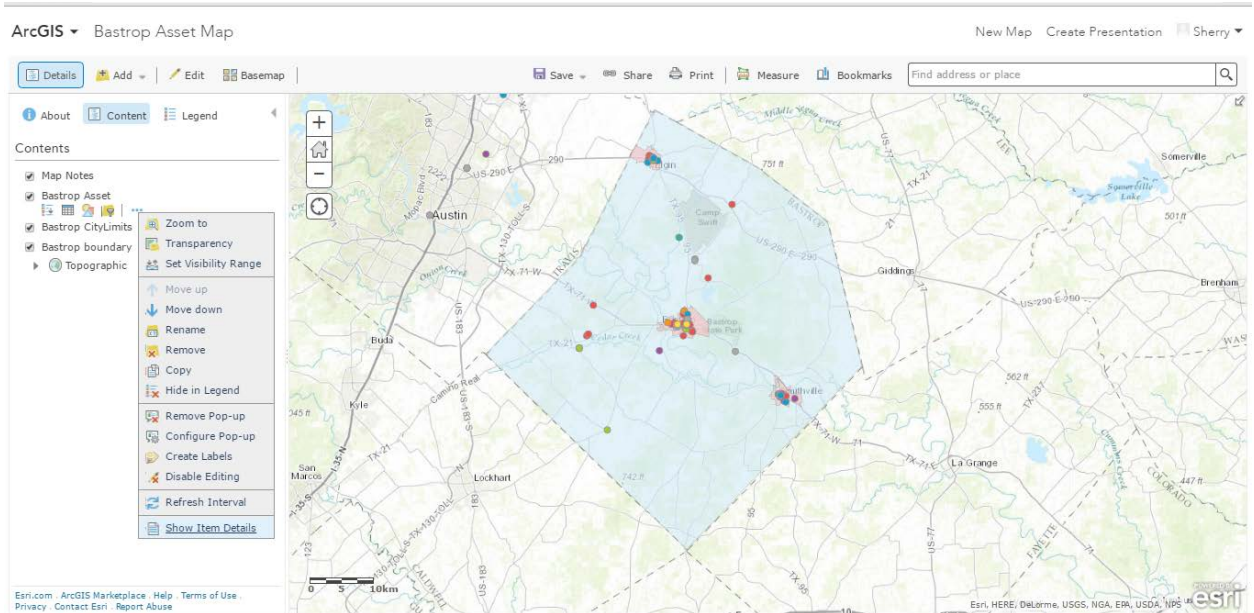
## Adding New Assets

You can add new assets by using the edit tool in the existing layer of assets.

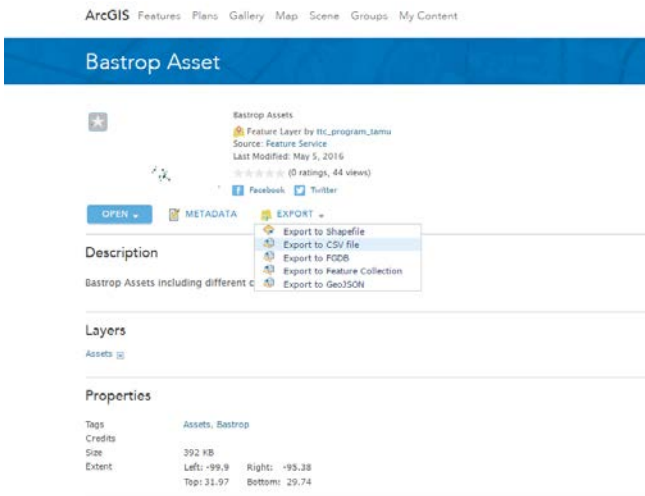
- Open the map in the viewer and click Edit. An editing template appears on the left side of the map. If the feature layer supports updating features only, you won't see any items in the editing template for creating new features.
- To add a feature, click its symbol in the template and click on its location to add it on the map.
- Press the Ctrl key to enable snapping. Snapping helps you line up the feature you are adding next to an existing one on the map. Once you've added the feature, a pop-up appears.
- Enter information into the available fields. The fields will vary based on the editable attribute fields in the layer. For example, you might enter a title, description, location, comment, and so on.
- To attach an image or other files with a feature, click Browse in the Attachments section of the pop-up and choose the file from your computer. The file can be up to 10 MB in size. The following file types are supported: 7Z, AIF, AVI, BMP, DOC, DOCX, DOT, ECW, EMF, EPA, GIF, GML, GTAR, GZ, IMG, J2K, JP2, JPC, JPE, JPEG, JPF, JPG, JSON, MDB, MID, MOV, MP2, MP3, MP4, MPA, MPE, MPEG, MPG, MPV2, PDF, PNG, PPT, PPTX, PS, PSD, QT, RA, RAM, RAW, RMI, SID, TAR, TGZ, TIF, TIFF, TXT, VRML, WAV, WMA, WMF, WPS, XLS, XLSX, XLT, XML, and ZIP.
- To edit a feature, click it on the map to open its pop-up and edit the information.
- To remove a feature, click it on the map to open its pop-up and click Delete.

## Exporting the Data to Excel Spreadsheet

- Open the map in the viewer and click More options under the tools on the Asset layer you want to export.



- Click on 'Show Item Details'
- Bastrop Asset File Details will open.



- Click on 'Export to CSV file' and fill in the Title, tags and the description for the file
- Now the spreadsheet will be created and will be available in the My Content of the ArcgisOnline
- The spreadsheet can be downloaded and accessed through Excel.