

Burleson County, Texas: State of the Community Report



Tiffany Cousins, MUP[1]; Jeffrey English, MUP[1, 2]; and Yi Meng, MUP[1]

[1] Texas A&M University, College of Architecture, Department of Landscape Architecture and Urban Planning, PLAN613: Planning Methods II, Spring 2015; [2] Brazos Valley Council of Governments

ABSTRACT

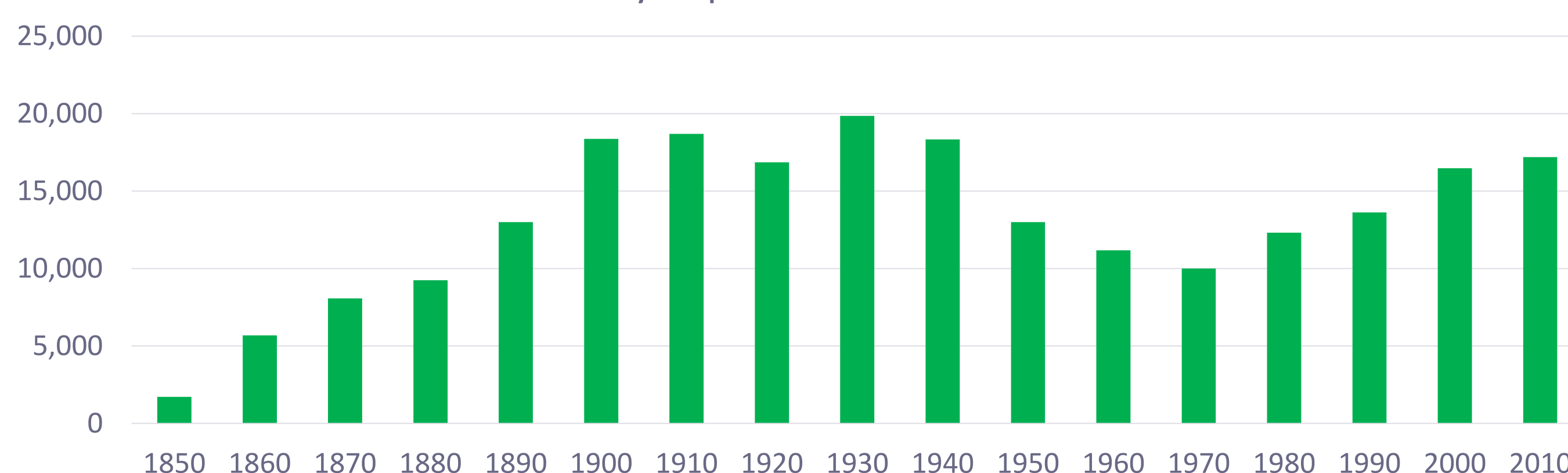
Our group will demonstrate the tools and processes we learned in PLAN 613 and use them on our case study of Burleson County, Texas. In this project we collected US Census/ACS data and inventory figures for the county. We also collected economic and financial data to help create the final product called a State of the Community Report. In this report we created many maps using ArcGIS, some will be shown below. Burleson County is located in Central Texas about 50 miles East of Austin, TX. The total population for the county in 2010 was 17,187. The median household income for the county is \$45,651. The average family size is 3.27 people. The average age is 33.6 years old. Unemployment rate in the county for December 2014 was 3.3%.



HISTORY

Burleson County was founded in 1846 and named after Edward Burleson, a General during the Texas Revolution, the third Vice President of the Republic of Texas, and later a State Senator for Texas (TSHA). Caldwell has been the county seat since 1846. Burleson County joined the Brazos Valley Council of Governments in 1966. In recent history, current County Judge Mike Sutherland has been in office since 2003.

Burleson County Population Since 1850 US Census



SWOT ANALYSIS

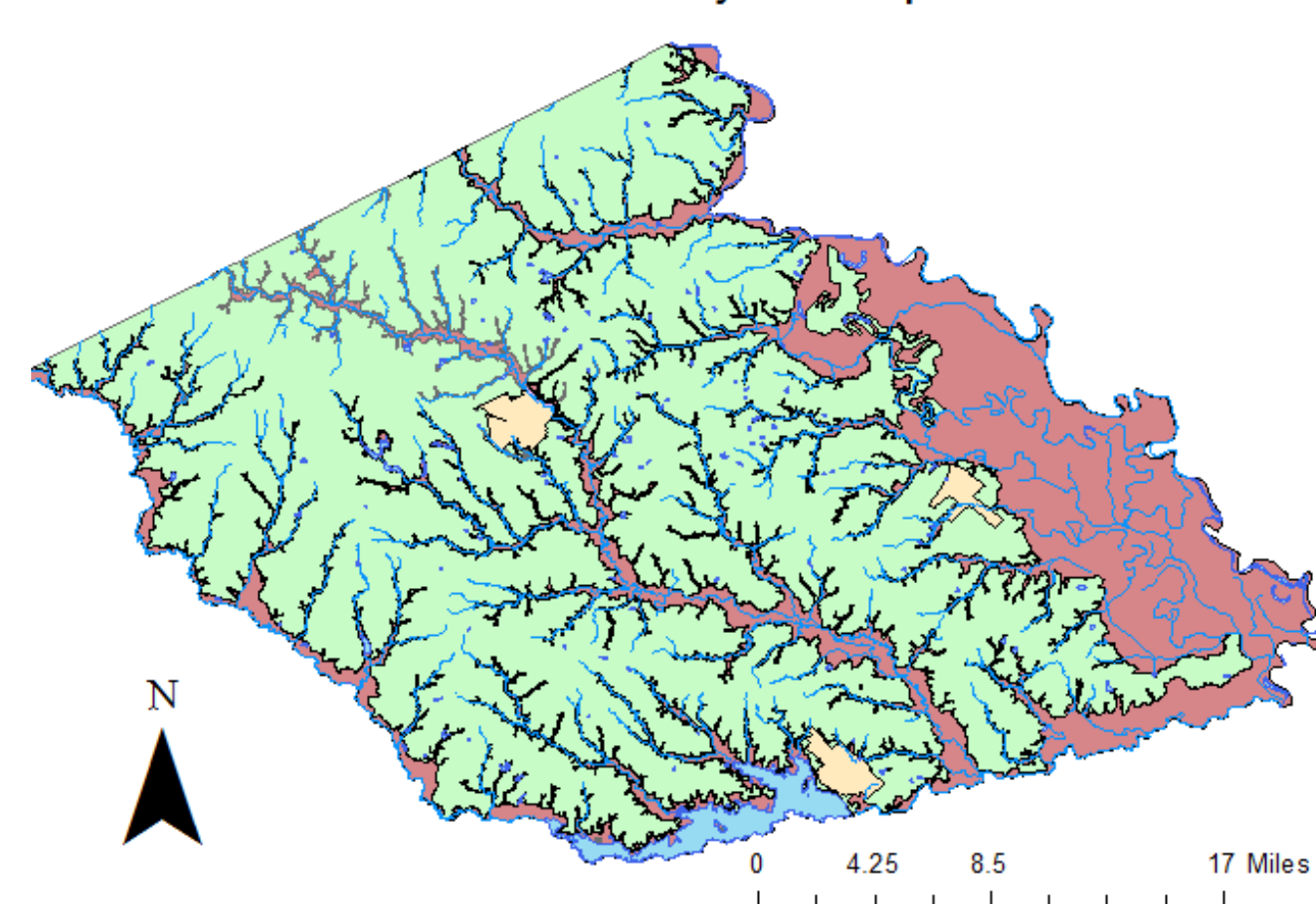
	Internal	External
Strengths	<ul style="list-style-type: none"> Lake Somerville Proximity of being 200 miles from 80% of the population of Texas High Quality ISDs Highly organized local gov'ts Nearby Bio-corridor and Texas A&M University Strong Hazard Mitigation Plan 	<ul style="list-style-type: none"> San Antonio Waterline Deal Oil/Gas Extraction Industry Texas A&M University O.D. Butler Animal Science Complex & University Farm
Weaknesses	<ul style="list-style-type: none"> Koppers Plant Pollution Only 1 Small Hospital Only 1 Small Airport No Recycling Centers No Centers of Higher Education (Community Colleges, etc.) Lack of Sidewalks in Urban Areas, which reduce Walkability/Mobility Lack of Public Transit 	<ul style="list-style-type: none"> Possibility of losing Population to Brazos (B/CS) or Washington Counties (Brenham) Losing Jobs to Surrounding Counties Lots of Retail leakage to surrounding areas according to Retail Gap Analysis (Farmer, Aaron)
Opportunities		
Threats		

METHODS

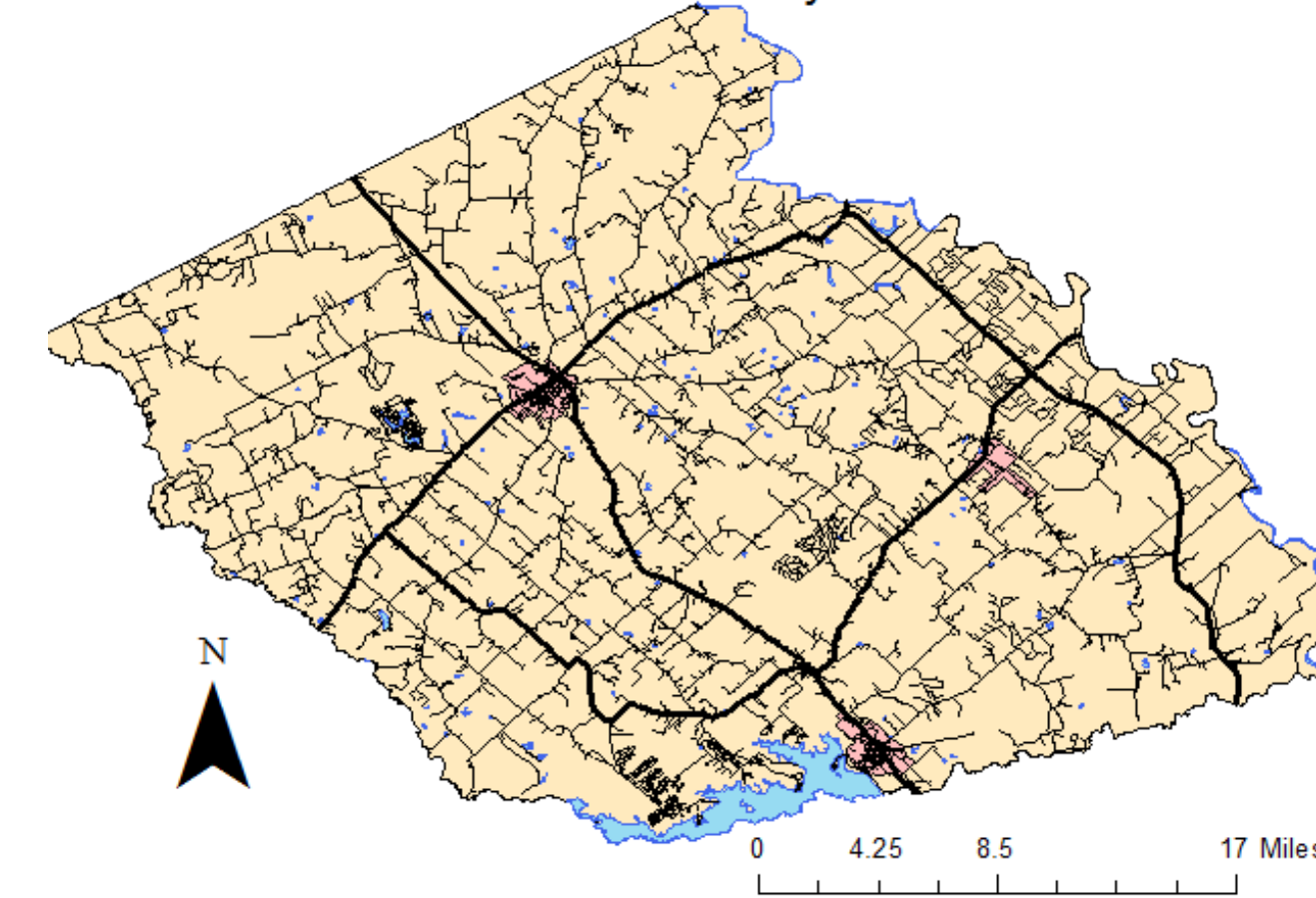
- Input / Output Analysis; Showing the importing and exporting of employed citizens in the county and outside the county.
- SWOT Analysis; Explaining the Strengths, Weaknesses, Opportunities, and Threats of the county as a whole.
- Location Quotients; Determining what industries are basic/non-basic and what industries export/import more resources in the county. LQs > 1 are basic, LQs <= 1 are non-basic employers.

ACS 5 Year (2006-2010 & 2009-2013)	LQ 2010	LQ 2013
Industries Compared to Texas Benchmark	Burleson Co.	Burleson Co.
Agriculture, Forestry, Fishing, and Hunting	3.14	4.13
Mining and Extraction	2.78	2.62
Utilities	3.06	1.10
Construction	1.29	1.24
Manufacturing	0.94	1.24
Wholesale Trade	0.38	0.64
Retail Trade	1.03	1.07
Transportation and Warehousing	0.79	0.83
Information	0.34	0.99
Finance and Insurance	0.61	0.47
Real Estate and Rental and Leasing	0.68	0.82
Professional, Scientific, Technical Services	0.31	0.67
Management of Companies and Enterprises	1.02	0
Administrative and Support and Waste Mgmt	0.35	0.28
Educational Services	1.45	1.66
Healthcare and Social Assistance	0.80	0.82
Arts, Entertainment, and Recreation	0.71	0.08
Accommodation and Food Services	1.35	0.88
Other Services (except Public Admin)	1.01	1.56
Public Administration	0.92	0.84

Burleson County Floodplains



Burleson County Roads



- Left Image: Floodplain map showing the 100 year floodplain in Red and Safer land in Green. Cities in Yellow.
- Right Image: Road map showing the road network within Burleson, Major roads in bold (State Hwy 21, 36, FM 50 & FM 60). Cities in Red.

FINDINGS/CONCLUSIONS

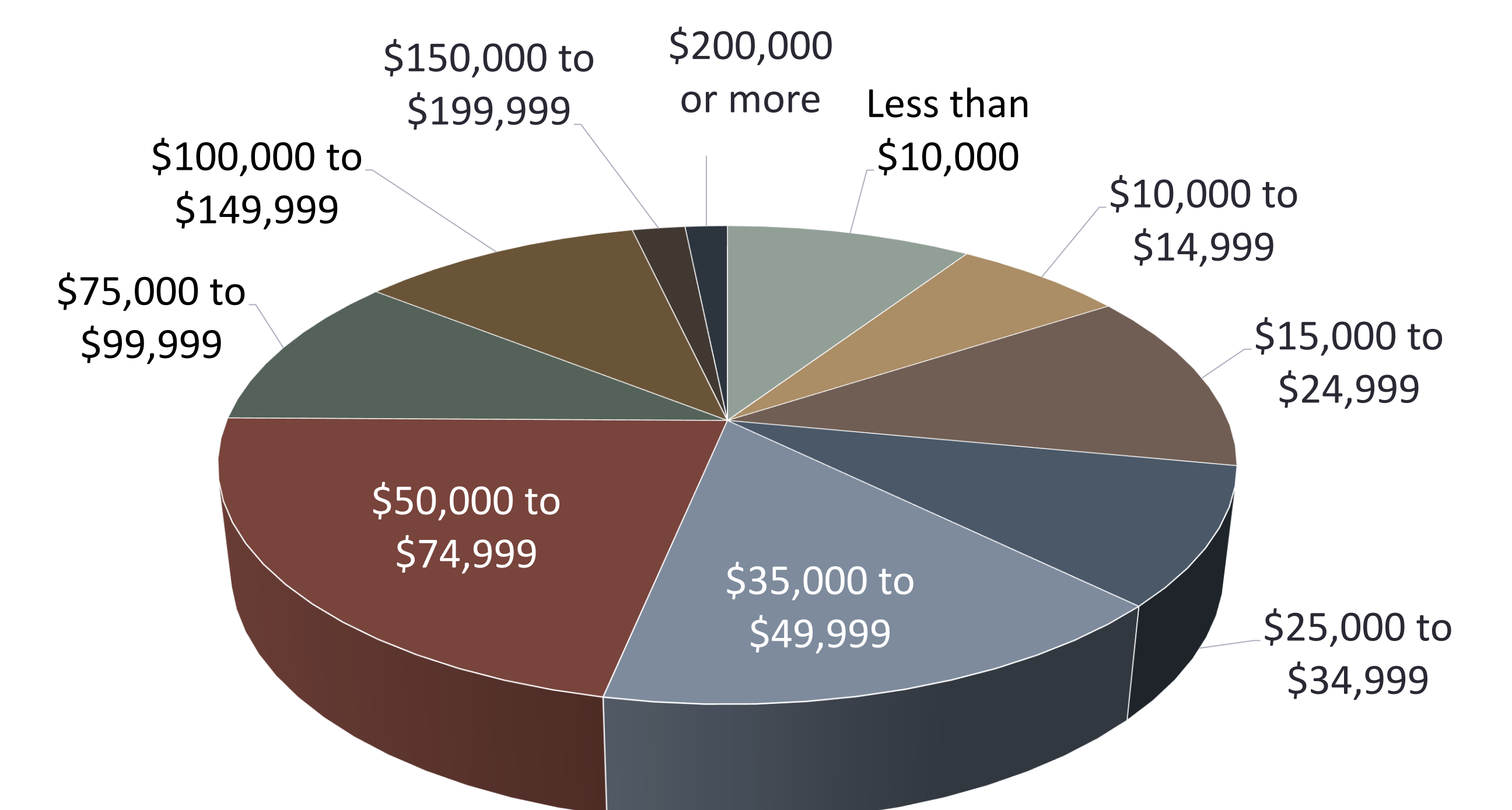
- Lake Somerville is not only an environmental asset for the county but it is also an Economic engine thanks in part to tourism.
- Agriculture and Mining/Extraction are major job sectors within Burleson County.
- Caldwell's one hospital of 25 beds compared to the population of 4,104 will not cut it in the event of a crisis.
- Lack of sidewalks in cities reduce mobility and increase health risks.
- Burleson County should partner up with Blinn College to create a campus for its citizens to offer higher education opportunities.
- Construct Recycling Centers along side Citizen Collection Stations to reduce carbon footprint.
- San Antonio Water Pipeline deal could create some local jobs through construction.

CENSUS/ACS DATA CHARTS

Burleson County Population Pyramid (2009-2013 ACS 5 Year)



Household Income according to 2009-2013 ACS 5 Year



REFERENCES

- Burleson County: Office of County Judge, Mike Sutherland and Assistant Karen
- Brazos Valley Council of Governments (BVCOG)
- Environmental Protection Agency (EPA)
- National Oceanic Atmospheric Administration (NOAA)
- St. Joseph's Burleson Hospital
- TSHA. Texas Society of History Association.
- US Bureau of Labor Statistics
- US Census / American Community Survey
- US Geological Survey (USGS)