

Electric & Gas Conservation Programs

Connecticut Energy Efficiency Fund Programs for Commercial & Industrial Customers

Presented by:
CL&P's Conservation and Load
Management Department



Connecticut
Light & Power

The Northeast Utilities System



The United Illuminating Company



Yankeegas

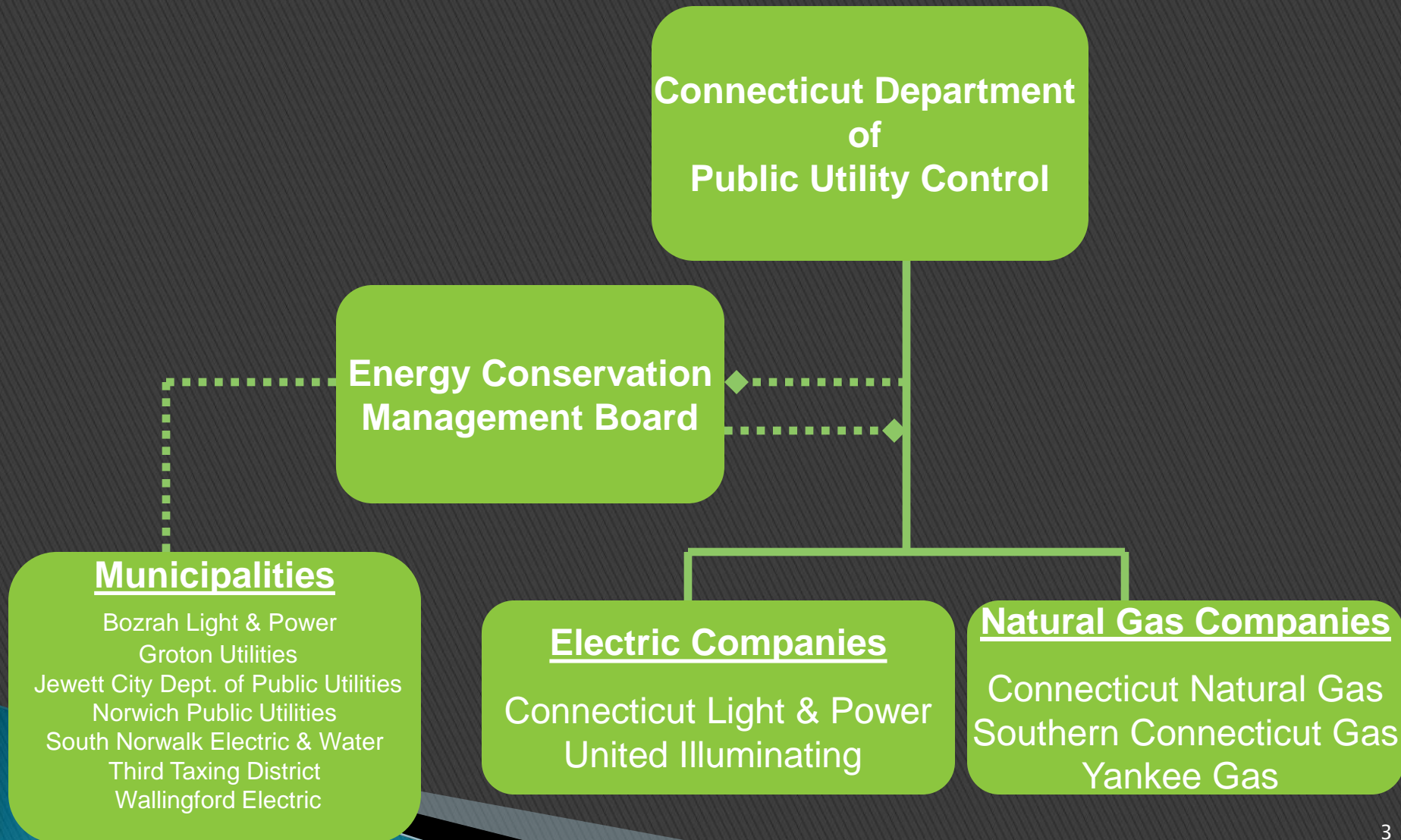
The Northeast Utilities System

Connecticut's Energy Efficiency Programs are funded by a Charge on Customer energy bills.
The Programs are designed to help customers manage their energy usage and cost.

Energy Efficiency & Background

- ▶ Connecticut Energy Efficiency Fund (CEEF) was created in 1998 by CT State Legislature
- ▶ Energy efficiency is a valuable resource for Connecticut, it:
 - Reduces air pollutants and greenhouse gases
 - Creates monetary savings for customers
 - Reduces need for more energy generation
 - Creates jobs
- ▶ Money for programs comes from electric and natural gas utility customers
 - Electric customers pay 3 mils per kilowatt-hour
 - Natural gas programs are funded through gas utility bills and approved by the Department of Public Utility Control
 - Programs are for **firm** gas customers only

Energy Efficiency Program Administration



CEEF Programs

- ▶ Offer technical assistance to C & I customers who want to improve energy efficiency
- ▶ Offer financial incentives to help implement energy-efficient measures
- ▶ Provide \$4 in benefits for every \$1 spent on programs

Commercial & Industrial Programs



New Construction,
Major Renovation &
Equipment
Replacement



Retrofit
Projects &
Small
Business



Operations &
Maintenance
Projects



Retro
Commissioning



PRIME



Loans &
Financing



Demand
Reduction

New Construction, Major Renovations & Equipment Replacement

Energy Conscious Blueprint Program

- ▶ Captures electric and natural gas savings where they are cost-effective; during design
- ▶ Provides \$ incentives for installing: energy-efficient equipment
- ▶ Prescriptive incentives are used where available
- ▶ Subject to Utility Caps

* Lighting projects use watts/sq.ft. calculations relative to ASHRAE 90.1-2004 baselines

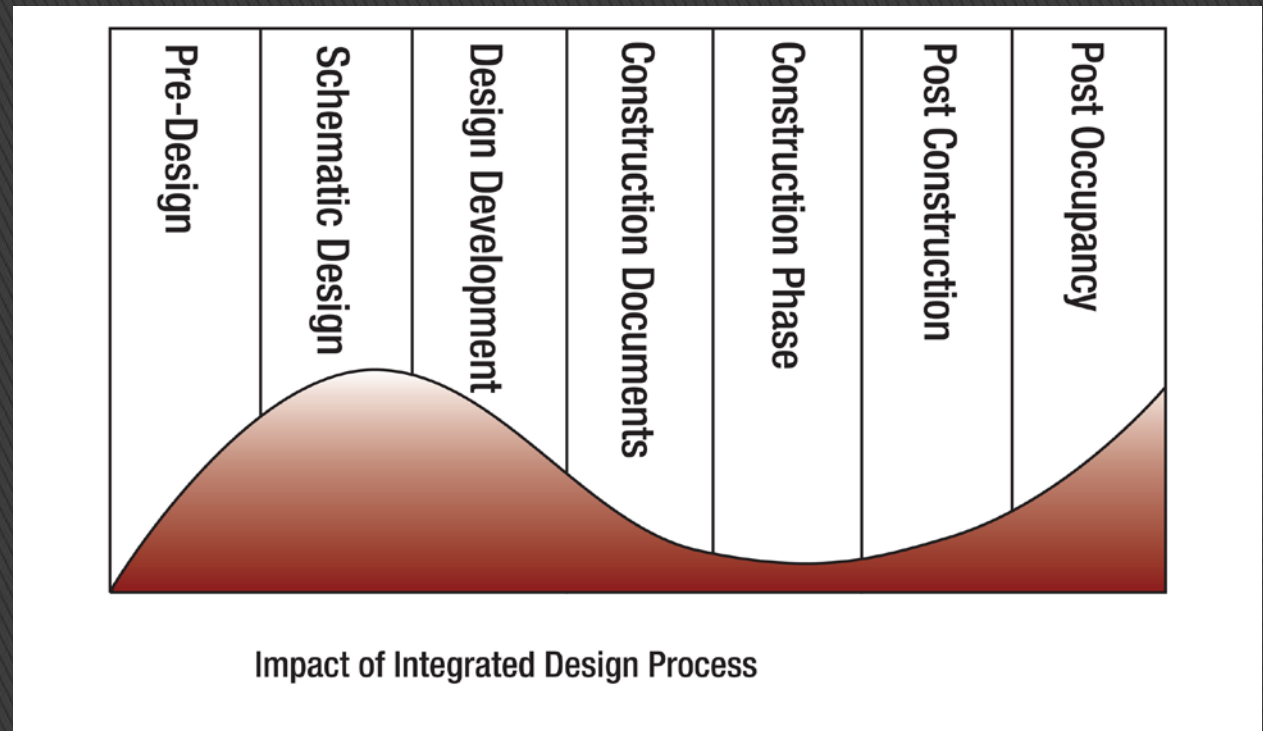
New Construction, Major Renovations & Equipment Replacement

Energy Conscious Blueprint Program

- ▶ Provides prescriptive rebates for:
 - CT Cool Choice for HVAC Equipment (\$ per ton)
- ▶ Utility prescriptive caps apply to the following:
 - VFDs (\$ per hp)
 - Gas Boilers (\$ per MBH)
 - Window Glazing (\$ per sq.ft.)
 - Pool Covers (\$ per sq.ft.)
 - Cool Roofs (White Roofs); (\$ per sq.ft.)
 - Air Compressors (semi-prescriptive)
 - From 5 hp to 100 hp (\$ per hp)

CEEf-funded programs can help if you are building new, making renovations, or adding equipment

- **Early involvement key**
- **Incentives address the incremental costs for the typically more costly energy-efficient equipment**



Retrofit

Energy Opportunities Program

- ▶ Encourages customers to replace functioning equipment with more energy-efficient options (excludes equipment that is $\geq 75\%$ of its useful life – use ECB rules)
- ▶ Provides incentives to customers who install electric and natural gas measures
- ▶ Covers up to 30% of the installed cost for lighting measures
- ▶ Covers up to 30% (electric) and 40% (gas) of the installed cost for non-lighting measures
- ▶ Prescriptive incentives are used where available
- ▶ Subject to Utility Savings Caps

Small Business

Small Business Energy Advantage Program

- ▶ Provides energy-saving and retrofit opportunities for small businesses
 - CL&P customers \leq 200 kW average monthly demand are eligible
 - Has pre-approved list of contractors to provide energy assessments and installation of energy-efficient measures

Operations & Maintenance

Operations & Maintenance Program

- ▶ Improves electrical and natural gas efficiency through changes and repairs that can be classified as maintenance procedures rather than capital investments
- ▶ Not intended for normal preventive maintenance, repetitive procedures or to subsidize major equipment purchases
- ▶ Provides incentives for repairs or replacements for defective steam traps, condensate return, compressed air systems (i.e., repair of leaks) and EMS maintenance, such as: replacement of defective sensors, relays, actuators and reprogramming
- ▶ Covers up to 30% (electric) and 40% (gas) for non-lighting measures
- ▶ Subject to Utility Savings Caps

Retro Commissioning (RCx)

Retro Commissioning Program

- ▶ Optimizes operation of customer's facility without installing capital equipment through technical, engineering and implementation support
- ▶ Requires minimum facility size of 100,000 sq.ft.
- ▶ Requires fully functioning Direct Digital Control (DDC) Building Management System (BMS) that can conduct trending & reporting

Retro Commissioning

Retro Commissioning Program

- ▶ Provides incentives for a variety measures strategy including:
 - Reset chiller discharge temperature
 - Reset pump and fan speeds
 - Demand ventilation
 - Optimization of AHU supply fan static pressure
 - Broaden humidity set points in data centers
 - Boiler optimization
 - Confirm sequence of operations for EMS equipment
- ▶ Covers a portion of implementation costs for EMS improvements and investigation fees

PRIME

Process Reengineering for Increased Mfg Efficiency Program

- ▶ Increase productivity and reduces-per-unit energy usage through Lean Manufacturing Techniques and the Kaizen process
- ▶ Focuses on industrial manufacturing processes
- ▶ Provides benefits
 - Reduces waste of material, time and transportation
 - Reduces inventory requirements

Demand Reduction

- ▶ Helps customers understand their kilowatt (kW) demand usage at different times of the day
- ▶ Identifies potential load reduction opportunities so customers can develop facility-specific strategy to reduce kW demand
- ▶ Requires participating customers be capable and willing to control kW demand during peak times through real-time monitoring and control

Residential Programs

- ▶ Multi-Family Initiative
- ▶ Residential New Construction
- ▶ Home Energy Solutions
- ▶ Limited-Income Programs

Important Reminders

- ▶ Contact us early in the design process
- ▶ Letter of Agreement(s) must be signed prior to the purchasing energy-efficient measures (except rebates)
- ▶ Agreement Milestone Dates
- ▶ Project Scope Changes

CL&P Contacts

- ▶ **New Construction (ECB):** Lomont White (860) 665-3790
- ▶ **Retrofit (EO):** John Matchett (860) 665-3054
- ▶ **O&M/RCx:** Dave McIntosh (203) 352-5457
- ▶ **Cool Choice/MotorUp Rebates:** Dave Hayward (860) 665-3386
- ▶ **Express Lighting Rebates:** Dave Hayward (860) 665-3386
- ▶ **Small Business:** Randy Vagnini (860) 832-4753
- ▶ **Financing:** Randy Vagnini (860) 832-4753
- ▶ **PRIME:** Rich Asselin (860) 665-3292
- ▶ **Residential Programs:** Joe Swift (860) 832-4936
- ▶ **Natural Gas Programs:** Rich Asselin (860) 665-3292
- ▶ **CL&P Account Executives**

Web Information

- ▶ CEEF / DPUC www.CTEnergyInfo.com
- ▶ CL&P www.cl-p.com
- ▶ UI www.uinet.com
- ▶ Yankee Gas www.yankeegas.com
- ▶ CNG www.cngcorp.com
- ▶ SCG www.soconngas.com
- ▶ CCEF www.ctcleanenergy.com

QUESTIONS???