

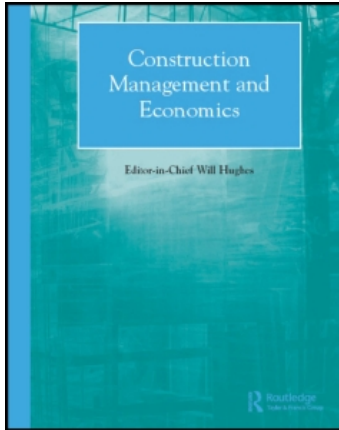
This article was downloaded by: [Sudhakaran, Bhavana]

On: 7 March 2010

Access details: *Sample Issue Voucher: Construction Management and Economics* Access Details: [subscription number 919703628]

Publisher *Routledge*

Informa Ltd Registered in England and Wales Registered Number: 1072954 Registered office: Mortimer House, 37-41 Mortimer Street, London W1T 3JH, UK



Construction Management and Economics

Publication details, including instructions for authors and subscription information:

<http://www.informaworld.com/smpp/title~content=t713664979>

Concentration in the international construction market

Kunhui Ye ^a; Weisheng Lu ^b; Weiyang Jiang ^a

^a Faculty of Construction Management and Real Estate, Chongqing University, P.R. China ^b

Department of Real Estate and Construction, The University of Hong Kong, P.R. China

Online publication date: 17 December 2009

To cite this Article Ye, Kunhui, Lu, Weisheng and Jiang, Weiyang(2009) 'Concentration in the international construction market', *Construction Management and Economics*, 27: 12, 1197 – 1207

To link to this Article: DOI: 10.1080/01446190903222429

URL: <http://dx.doi.org/10.1080/01446190903222429>

PLEASE SCROLL DOWN FOR ARTICLE

Full terms and conditions of use: <http://www.informaworld.com/terms-and-conditions-of-access.pdf>

This article may be used for research, teaching and private study purposes. Any substantial or systematic reproduction, re-distribution, re-selling, loan or sub-licensing, systematic supply or distribution in any form to anyone is expressly forbidden.

The publisher does not give any warranty express or implied or make any representation that the contents will be complete or accurate or up to date. The accuracy of any instructions, formulae and drug doses should be independently verified with primary sources. The publisher shall not be liable for any loss, actions, claims, proceedings, demand or costs or damages whatsoever or howsoever caused arising directly or indirectly in connection with or arising out of the use of this material.

Concentration in the international construction market

KUNHUI YE,^{1*} WEISHENG LU² and WEIYAN JIANG¹

¹Faculty of Construction Management and Real Estate, Chongqing University, P.R. China

²Department of Real Estate and Construction, The University of Hong Kong, P.R. China

Received 28 February 2009; accepted 23 July 2009

With the involvement of an increasing number of contractors in the international construction market, venturing overseas has been fraught with fierce competition and considerable uncertainties. This underscores the importance of examining the extent to which the intensity of competition (IoC) for international construction business is moderate. Concentration is a conventional IoC measure. By synthesizing four major concentration methods including concentration ratio, entropy, Gini coefficient and the Herfindahl index, a new model for measuring moderate IoC is thus proposed. Using the 28 years ENR-based data of the top 225 international contractors (TIC 225) in the proposed model, the IoC for international construction business is found to be moderate, if the magnitude of the market shares occupied by the top four international contractors is 0.2735. The finding revises a popular view that international construction competition has been intensifying only since 2002. It is implied that the proposed model favours a better understanding of competition characteristics in the international construction market and provides new insights into the theories about concentration.

Keywords: International construction market, business concentration, intensity of competition, moderate competition.

Introduction

The 21st century is characterized by advanced technology, fast transportation, convenient communication, integrated markets and trade liberalization. These new characteristics have accelerated the internationalization of construction businesses, and few contractors find that they can be exempt from this trend (Raftery *et al.*, 1998; Loosemore, 1999; Korkmaz and Messener, 2007). On the one hand, many construction firms adopt venturing overseas as a major strategy to ensure continued growth. They make due response to business competition in cross-border markets. On the other hand, they have to struggle against foreign rivals in their domestic markets. The construction business is nowadays both a local and an international practice.

With the increasing internationalization of the construction market, there is a popular view that the intensity of competition (IoC) has been increasing and the international market has consequently much volatility. For instance, Ofori (2003) opined that involving contractors from China, South America, South-East

Asia and Africa, the international market will be more competitive. Low *et al.* (2004) disclosed that as a result of intense competition, the international involvement of top British contractors has declined from a peak in 1996, while there is an increasing presence of Chinese contractors in the international arena. Although competition in the construction market worldwide has been an all-pervading phenomenon, it is considered that a moderate IoC deserves attention. This is because little or no competition is not good for the effectiveness and efficiency of the deployment of construction resources, while over-competition can result in serious market failure (Akintoye and Skitmore, 1991; Ball *et al.*, 2000).

The IoC has been measured in a number of ways typically including concentration, market mobility and market instability (Barla, 1999; Bajo and Salas, 2002). Among the existing approaches, concentration is a conventional instrument that measures competition intensity by quantifying the extent to which market shares are distributed among incumbents (Bajo and Salas, 2002; Egghe, 2005). The rationale behind the

*Author for correspondence. E-mail: Kunhui.YE@gmail.com

concentration-based measurement is that a high degree of concentration in an industry conveys an image of weak competition, while those industries wherein numerous businesses have parallel market shares are deemed as highly competitive (Boone, 2001). Concentration is thus an indirect measure of competition intensity.

Employing concentration approaches to measure competition intensity is prevalent in the area of construction management and economics. Chiang *et al.* (2001) found that construction business in the building sector was less concentrated than that in the civil engineering sector in Hong Kong. McCloughan (2004) illustrated little concentration phenomenon in the British construction market. There are still other related studies addressing parallel findings that construction firms appear to have equivalent market powers, construction business is unconcentrated, and the construction market is fiercely competitive (Langford and Male, 2001; Wang, 2004). Notwithstanding considerable research devoted to the subject of competition intensity, little effort has been put into researching moderate IoC in the international construction market. As stated earlier, little competition or over-competition can both bring about market failure, while a moderate IoC is good for the long-run development of the international construction market.

The purpose of this study is therefore to examine what moderate IoC is in the international construction market from the perspective of market concentration. The study offers new insights into international construction competition. Through such an examination, it is possible for international contractors to gauge competition pressure, and thus appropriate competitive strategies can be devised to address this competition. The paper is divided into four parts. First, previous theories about market concentration are reviewed critically. In the following 'methods' section, a new concentration approach is proposed based on the critical review. Data collection methods are introduced. Then it moves on to the data analyses and discussions of IoC in the international construction arena. Lastly, conclusions are drawn.

Measures of concentration

Theories on concentration

Concentration theories are an important part of the structure-conduct-performance paradigm in the discipline of industrial economics (Bird, 1999; McCloughan, 2004). The concern about concentration can be traced back as early as to the development of the theories of imperfect and monopolistic competition in the 1930s (Utton, 1970). Since then, substantial research has been conducted to investigate the

application of concentration theories in different industrial sectors.

Research has pinpointed the impact of concentration on various aspects of the structure-conduct-performance paradigm, e.g. industrial profitability (Bonardi, 2001), advertising (Shepherd and Shepherd, 2004), innovation (Shrieves, 1978; Boone, 2001), pricing (Bonanno and Haworth, 1998), differentiation (Shepherd and Shepherd, 2004), specialization (George, 1972), diversification (Carlton and Perloff, 2005), market entry barriers (Lipczynski and Wilson, 2001), industrial wage (Haworth and Reuther, 1978), and competition policies (Wang, 2004). The measurement of concentration supports governmental decision-making on deterring any collusive or anti-competitive behaviours (Bird, 1999).

On the other hand, concentration is determined by multiple factors including business diversity (Miller, 1969), market entry barriers (Wenders, 1971), market growth (Shepherd, 1964) and market size (Neumann *et al.*, 2001). It seems that the term 'concentration' has become multidimensional, referring to the concentration of economic power, market power, oligopoly power, competition intensity and market efficiency. The multidimensional nature complicates the measurement of concentration.

Concentration measures

There are four dominant approaches to measuring concentration, namely, concentration ratio (CR_n), Herfindahl index (HI_n), entropy (EN) and Gini coefficient (GINI). More detail about these four concentration measures is given in Table 1. It can be seen from the column 'model' of Table 1 that the calculation of the four concentration indexes is mainly based on *firm i*'s market share (S_i) and firm number (n).

Concentration ratio (CR_n) can be calculated as the percentage of the outputs occupied by the n largest firms in relation to a given market. The extremes of CR_n values are zero and one, representing perfect competition and little competition (monopoly) respectively. For example, van Kranenburg (2002) employed the measure CR_4 to address the status of market competition, and suggested that the industry is highly competitive if CR_4 is close to 0. In contrast, it means that the market is close to a monopoly when CR_4 is near to 1. It is one of the most commonly used concentration measures because of the relatively easy collection of data in terms of the largest n (normally 4 or 8) companies and their market shares.

Although CR_n has many applications, criticism of CR_n is largely focused on its two major inadequacies. First, the measure only accounts for the market powers owned by a few largest firms without taking into

Table 1 Models of concentration measures

Method	Description	Model	Range	Reference
CR _n	Aggregating the market shares of the <i>n</i> largest firms, where <i>n</i> is usually 4	$CR_n = \sum_{i=1}^n S_i$	(4/ <i>n</i> , 1)	Baldwin and Gorecki (1994); Wang (2004)
HI	Accumulating the market shares of all the firms by weighting the corresponding market sales	$HI = \sum_{i=1}^n S_i^2$	(1/ <i>n</i> , 1)	Ghosh (1975); Davies (1979)
EN	Measuring the degree of disorder, uncertainty, or randomness to reflect competition intensity	$EN = \sum_{i=1}^n S_i \log(1/S_i)$	(0, log <i>n</i>)	Davies (1979); Sawyer (1985)
GINI	Measuring the extent to which businesses in a market are unequal in firm size distribution	$GC = \frac{n+1}{n-1} - \frac{2}{n(n-1)\mu} \cdot \sum_{i=1}^n (N_i S_i)$	(0, 1)	Guth (1971); Ghosh (1975); White (1976)

Notes: *S_i*, firm *i*'s market share; *n*, firm number; *N_i*, the rank of firm *i*; *μ*, mean market share of all firms.

^a When *n* is very large, the ranges of both CR_n and HI will be (0, 1).

account the other firms in the market. Second, the equal-weight setting in the CR_n construct oversimplifies the substantial difference in market powers of the investigated *n* largest firms. As an alternative, the Herfindahl index (HI) envisages the presence of all firms by weighting each according to their relative market shares. As can be seen from Table 1, HI ranges from zero (perfect competition) to one (little competition). An increase in HI value equals a decrease in competition intensity.

Entropy (EN) measures the uncertainty/probability of a random variable in information theory (Yu, 2000). The process of business competition is so interactive, complex and dynamic that not all competitors can always outperform their counterparts (Bengtsson, 1998). Therefore, concentration of market shares as a consequence of business competition appears to be an accident. Many researchers have thus used EN to reflect the process of business rivalry, the distribution of marker power among incumbent firms and the corresponding status of market competition (Horowitz and Horowitz, 1968). The higher the IoC level, the lower the probability that firms can outdo their competitors. Entropy and industrial concentration are inversely related.

Gini coefficient (GINI) is directly linked to the well-known Lorenz curve that is defined as a ratio with values varying between zero and one in describing the distribution of income, wealth and business. GINI can be derived by quantifying the deviation of the distribution of market shares held by all firms from a current status to the equal situation where each firm has identical market share (Baldwin and Gorecki, 1994; Egghe, 2005). As a general rule, the decrease in GINI indicates the approach of the market to the equal situation and a higher intensity of competition, while a larger coefficient mirrors a more unequal distribution and a lower IoC accordingly.

The merits and demerits of concentration measures have long been debated in previous studies. For instance, Davies (1979) developed an Iso-concentration approach to unveil the close similarities between the above four measures. Kwoka (1981) illustrated that the choice of concentration measures does matter to a large extent. Bailey and Boyle (1971) claimed that few concentration indexes are superior to others, while Hall and Tideman (1967) asserted that the measure HI is more effective. The debate on concentration measures has not pinpointed a good way for understanding moderate IoC, but it does suggest using an individual measure for the investigation of market concentration may not be robust. There is a need for a new model with greater robustness to measure market concentration and in turn to inform moderate IoC.

Research methods

Proposing a new model for measuring moderate IoC

The inadequacy of single measure (e.g. CR_n, HI_n, EN, and GINI) for the investigation of market concentration necessitates the exploration of an improved concentration measure, which ideally could eliminate the demerits of previous studies while keep their merits. Moreover, the new model should inform moderate IoC in the international construction market, which we are concerned with in this study. According to the definitions shown in Table 1, the decrease in EN value suggests that the incumbent firms are able to win business competition with higher probabilities, thus the market is more attractive to potential competitors. Meanwhile, the decrease in EN value presents an increase in the dominance of a few largest firms as well as the level of market inequality that can be measured

by GINI. This further enables greater market entry barriers posed by the largest firms to impede the entrance of potential competitors. Researchers have pointed out that the occurrence of greater entry barriers can force the market away from its contestable status (Bain, 1956; Bengtsson, 1998). Therefore, the lower the market entry barriers are, the better the market is, and thus the lower the GINI should be. This interactive process signals the potential intersection of EN and GINI where the desirable IoC (or concentration status) can be recorded as shown in Figure 1.

As discussed above, the measure HI is better than CR_n in reflecting competition intensity, but the difficulty of collecting data for HI undermines the applicability to the construction market. While on the other hand CR_n is an acceptable measure for concentration and it is an easy-to-calculate indicator of concentration with statistics usually available in many governmental periodical compilations. It is therefore the intent of this research to use CR_n to construct EN, GINI, and HI. This is possible because the above discussion on the four concentration measures favours the recognition of conceptual relationships between EN, HI, GINI and CR_n as shown in Table 2. In order for them to join in the calculation, different concentration measures with

Table 2 Interrelationships between the four concentration measures

	Competition Intensity		CR _n
<i>Direction</i>			
HI _n	↑	↓	↑
GINI	↑	↓	↑
EN	↑	↑	↓

different ranges need to be normalized. Equation 1 to 3 serve this purpose. GINI index needs no normalization as its range is (0, 1) already.

Normalized Herfindahl index (HI):

$$NHI = (HI - 1/n) / (1 - 1/n) \tag{1}$$

Normalized concentration ratio (CR₄):

$$NCR_4 = (CR_4 - 4/n) / (1 - 4/n) \tag{2}$$

Normalized entropy index (EN):

$$NEN = (EN - 0) / \log n = EN / \log n \tag{3}$$

Therefore, a function is proposed as shown in Equation 4, although at this stage, specific relationships between the four concentration measures are still awaiting further exploration:

$$NHI = f(NCR_n) \text{ indicates the moderate IoC of a market} \tag{4}$$

where NCR_n is subject to functions

$$\begin{aligned} GINI &= f(NCR_n); \\ NEN &= f(NCR_n); \text{ and} \\ GINI &= NEN. \end{aligned}$$

Data collection for investigating moderate IoC in the international construction market

International construction usually refers to the construction works undertaken by companies outside their home countries. Many international construction companies have a diversity of businesses in terms of architecture, engineering and construction. They are also able to simultaneously compete for project contracts in various countries. It is quite difficult, if not completely impossible, to collect data per business competition and to identify those contractors who have international businesses. Hence, data on construction activities are usually poor and erratic whether domestic or international (Ruddock, 2002).

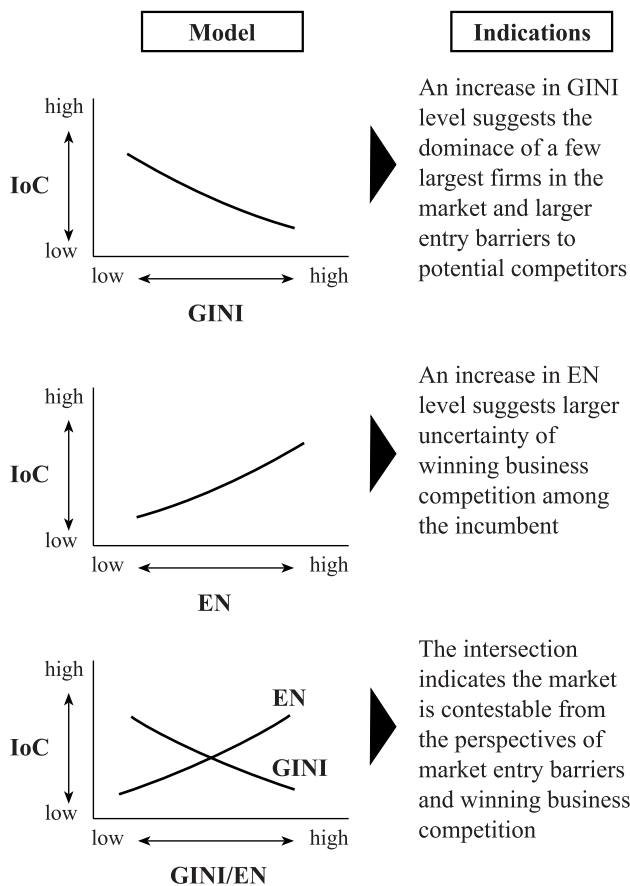


Figure 1 Moderate level of IoC

Alternatively, the statistical data of the top 225 international contractors (TIC 225) compiled by Engineering News-Record (ENR) were collected for this study for four major reasons. First, contractors other than the TIC 225 have negligible market power as their market shares are relatively very small. The TIC 225 are representative of the majority of overseas works undertaken by international contractors. Secondly, much of the strongest direct competition encountered by a large firm is apt to originate from competitors of similar size (Kaplan, 1980). Accordingly, competition for international construction occurs mostly among the TIC 225 themselves. Thirdly, despite some limitations in terms of country coverage, the TIC 225 data have been demonstrated useful for examining the subject of international construction (Ofori, 2003; Low *et al.*, 2004). In addition, the enduring effort from ENR to publish statistical data of the TIC 225 provides a consistent series of longitude data for the present research which aims to identify the moderate IoC in the international construction market.

Each year, ENR deploys an individual issue to report the presence of TIC 225 in the international construction market. Using the year 2007 as an example, a typical structure of the data as reported includes ranks of the present year and past year, international revenue, total revenue and new contracts of each firm. The report also analyses market by sub-sector (e.g. buildings, waster supply project, etc.) of individual firms. The international revenue (IR) is of concern in this research. The authors tabulated the IR of the TIC 225 into the Statistics Package for Social Science (SPSS). The data in the past 28 years from 1981 to 2008 were collected and fed into SPSS. They are mainly from the university library but issues in years from 1981 to 1989 were collected with the kind help from colleagues in Singapore and Taiwan. From year 2001 onwards, electronic versions are available, which greatly facilitated the data collection.

Data analysis

Annual IRs of the TIC 225 spanning from 1981 to 2008 are transferred into relative market shares to derive the indices of CR₄, EN, HI, and GINI. The derived indices are then normalized by using Equations 1 to 3 as shown above. Results of the calculation are presented in Table 3.

The curve regression embedded in SPSS is applied to determine the most suitable functions NHI = f (NCR₄), GINI = f (NCR₄), and NEN = f (NCR₄) as pursued in Equation 4. The functional relationships between the four concentration measures are shown in

Figure 2. The resultant model parameters are described separately in Table 4.

Using the parameters in Table 4 and Equation 2 functions NHI, GINI and NEN can be rewritten as follows and described graphically in Figure 3. It can be seen that NEN and GINI intersect at a point where NCR₄ is 0.2603. According to the description as shown in Figure 1, this is the point indicating the moderate IoC in the international construction market. As shown in Figure 3, at this point where NCR₄ is 0.2603, a moderate IoC expressed in NHI is 0.3052.

$$NHI = 0.607 \cdot \left(\frac{CR_4 - 4/n}{1 - 4/n} \right)^2 + 1.030 \cdot \left(\frac{CR_4 - 4/n}{1 - 4/n} \right) - 0.004 \tag{5}$$

$$GINI = 0.921 - 0.040 \cdot \left(\frac{1 - 4/n}{CR_4 - 4/n} \right) \tag{6}$$

$$NEN = 0.595 \cdot \left(\frac{CR_4 - 4/n}{1 - 4/n} \right)^{-0.189} \tag{7}$$

Many researchers have pointed out the weakness of concentration measures especially in terms of data availability (Adelman, 1951; Parker, 1991; McCloughan, 2004). Many concentration ratios are not made available in official publications, which typically include information on the size distribution of firms, as it is not permitted to disclose commercial data for individual firms (McCloughan and Abounoori, 2003). Thus, researchers commonly opt for the most readily available measure, CR₄ (Boyes and Smyth, 1979; Wang, 2004). Compared with the equations shown in Table 1, Equations 5–7 are more applicable as they are built on CR₄ rather than commercial data for all individual firms. Furthermore, using these equations, it is expected to be able to detect the level of moderate concentration if only GINI equals to NEN.

Findings and discussion

Understanding international construction market by using the Moderate IoC Model

Based on the above analysis, it can be seen that the new model can inform a moderate intensity of competition (IoC) in a given market. By synthesizing existing concentration measures, the Moderate IoC Model suggests that the intersection between GINI and EN indicates that the competition within a market is moderate; the market is contestable from the perspectives of market entry barriers and winning business

Table 3 Concentration indices for international construction business

Year	CR ₄	EN	HI	GINI	NCR ₄	NEN	NHI
1981	0.2334	1.9569	0.2281	0.6676	0.2196	0.8319	0.2247
1982	0.1543	2.0563	0.1509	0.5965	0.1390	0.8742	0.1471
1983	0.1491	2.0417	0.1511	0.6165	0.1337	0.8680	0.1473
1984	0.2223	2.0068	0.2031	0.6246	0.2082	0.8532	0.1996
1985	0.2381	1.9429	0.2563	0.6689	0.2243	0.8260	0.2529
1986	0.2195	1.9502	0.2170	0.6782	0.2054	0.8291	0.2135
1987	0.1967	1.9877	0.1911	0.6538	0.1822	0.8450	0.1875
1988	0.1508	2.0514	0.1450	0.6140	0.1354	0.8721	0.1412
1989	0.1896	1.9700	0.1912	0.6696	0.1749	0.8375	0.1875
1990	0.2111	1.8746	0.2352	0.7392	0.1968	0.7970	0.2318
1991	0.2026	1.8856	0.2283	0.7367	0.1882	0.8016	0.2249
1992	0.2731	1.7934	0.3043	0.7778	0.2600	0.7624	0.3012
1993	0.3132	1.7661	0.3514	0.7838	0.3007	0.7508	0.3485
1994	0.2494	1.8432	0.2657	0.7544	0.2358	0.7836	0.2624
1995	0.1904	1.9559	0.1915	0.6912	0.1757	0.8315	0.1879
1996	0.1638	1.9635	0.1742	0.6913	0.1487	0.8348	0.1705
1997	0.1766	1.9484	0.1842	0.7008	0.1617	0.8283	0.1806
1998	0.2121	1.9015	0.2175	0.7268	0.1978	0.8084	0.2140
1999	0.1845	1.9179	0.2016	0.7179	0.1697	0.8154	0.1981
2000	0.2104	1.8419	0.2428	0.7634	0.1961	0.7831	0.2394
2001	0.2664	1.7850	0.3042	0.7838	0.2531	0.7589	0.3011
2002	0.3144	1.7582	0.3700	0.7861	0.3020	0.7475	0.3672
2003	0.2997	1.7586	0.3424	0.7936	0.2870	0.7476	0.3395
2004	0.2607	1.7695	0.3118	0.7900	0.2473	0.7523	0.3087
2005	0.2573	1.7897	0.3006	0.7797	0.2439	0.7609	0.2974
2006	0.2409	1.8144	0.2842	0.7653	0.2271	0.7714	0.2810
2007	0.2309	1.8499	0.2619	0.7476	0.2169	0.7865	0.2586
2008	0.2020	1.8909	0.2291	0.7262	0.1876	0.8039	0.2257

competition. The Moderate IoC Model also avoids the demerits of existing concentration measures. CR_n is a rough measure of market concentration but calculating CR_n is relatively easier in terms of data availability. HI is a better measure than HI in reflecting competition intensity, but the difficulty of collecting data for HI undermines its wider applicability. The shortcomings are overcome in this research by using CR_n to construct EN, GINI and HI.

By applying 28 years' data from ENR to the Moderate IoC Model, it is found that the intensity of competition in the international construction market is moderate when normalized CR₄ (NCR₄) is 0.2603 and the indices of NHI, GINI, and NEN are 0.3052, 0.7673, and 0.7673 respectively. By applying the normalized indices into Equations 1 to 3, the values of CR₄, HI, and EN are derived, namely, 0.2735, 0.3083, and 1.8049 respectively. In other words, the IoC in the international market construction market is moderate when CR₄ is 0.2735 and HI is 0.3083. This gives a reference point against which the IoC level in the international construction market can be compared. The closer the

NHI value to the point (where HI is 0.3083) indicated by the intersection of NEN and GINI, the more appropriate the concentration status as well as the IoC level.

IoC as expressed in NHI over the study period 1981 to 2008 is calculated and shown in Figure 4. It can be seen that the international construction competition was relatively moderate in three years, namely 1992, 2001 and 2004. A significant variation in IoC over the study period 1981 to 2008 is also noted; the competition intensity in the international construction market during the period has exhibited a wavy trend. This revises a view presented earlier in this paper that the competition for international construction business has been intensifying only since 2002. Actually, from 2002 to 2008, sometimes the IoC is close to the moderate level, while at other times it deviates from the level.

Comparing the Moderate IoC Model with previous concentration studies

To some extent, the research findings contradict previous concentration studies conducted in contexts

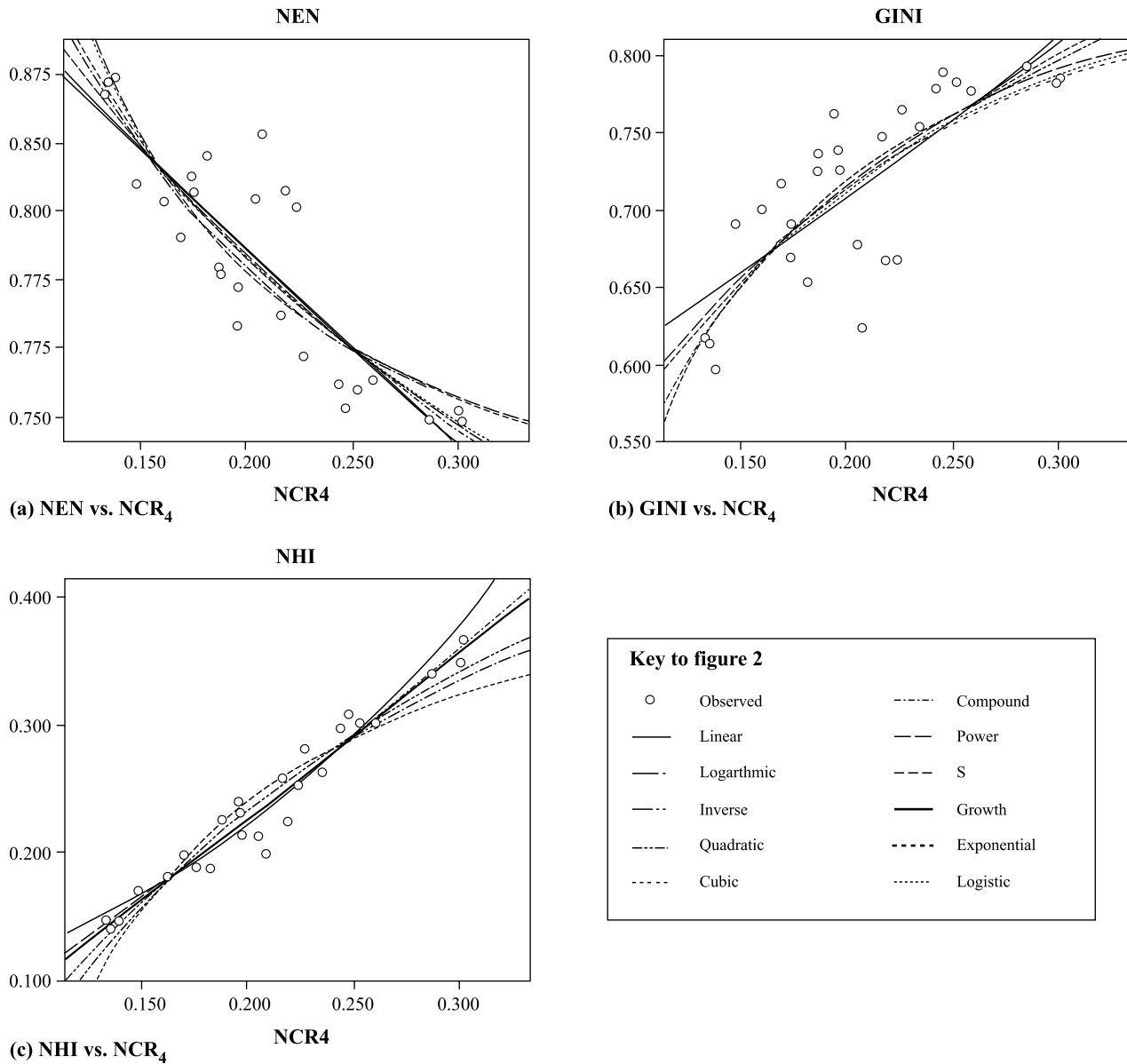


Figure 2 Functional relationships between the four concentration measures

Note: Linear, logarithmic, inverse, quadratic, cubic, compound, power, S, growth, exponential, and logistic models are compared for the choice of the best function forms.

Table 4 Model summary and parameter estimates

Expression	Model summary							Parameter estimates		
	R Square	Std. errors of the estimate	F	df1	Df2	Sig.	Const.	b1	b2	
NHI = f (NCR_4)	Quadratic	0.948	0.015	227.059	2	25	0.000	-0.004	1.030	0.607
GINI = f (NCR_4)	Inverse	0.616	0.038	41.795	1	26	0.000	0.921	-0.040	
NEN = f (NCR_4)	Power	0.759	0.021	81.970	1	26	0.000	0.595	-0.189	

Note: The independent variable is NCR_4 .

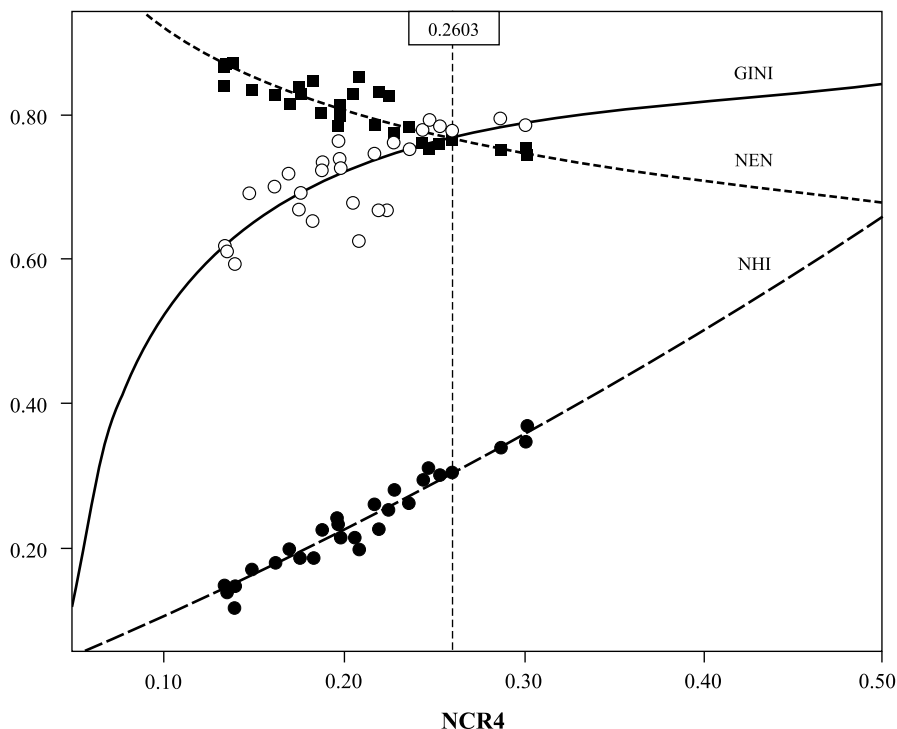


Figure 3 Moderate IoC in the international construction market

(e.g. domestic economy) other than the international construction market. Baldwin and Gorecki (1994) claimed that an industry with CR_4 above 75% is more conducive to a ‘competition problem’ that undermines the role of the market in resource allocation. As such, it appears that the international construction market has been good since 1981, for all the CR_4 values (Table 3) are considerably lower than this alert level. However, according to Oster (1999), competition statuses can be classified into four groups in accordance

with CR_4 values, namely, highly concentrated oligopoly (1.00–0.75), moderately concentrated oligopoly (0.50–0.749), oligopoly (0.25–0.499), and atomism (0.00–0.249). The competition for international construction in the past 28 years satisfies Oster’s definition of atomism, thus, the market has been over-competitive for a long time.

The Herfindahl index (HI) can be used to gauge potential adverse competitive effects imposed by a merger and market efficiency. For instance, in the

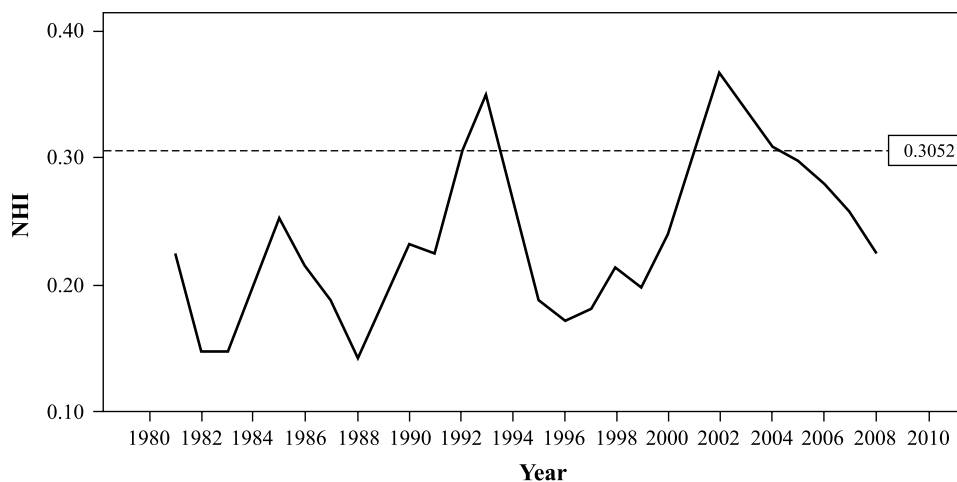


Figure 4 Annual NHI in the international construction market (1981–2008)

United States, a post-merger HI below 0.1000 in a market is deemed as unconcentrated and above 0.1800 is regarded as highly concentrated (DJFTC, 1997). The larger the extent to which HI exceeds 0.1800, the less the competition will be in the market. Therefore, it is widely accepted that those industries with HI values over 0.1800 have insufficient competition (Oster, 1999). However, this is not the case in the context of international construction; as suggested by the Moderate IoC Model, a moderate IoC is recorded when HI is 0.3083, rather than 0.1800.

The IoC in the international construction market can also be interpreted at GINI level. As suggested previously, an IoC is moderate when GINI is 0.7673. The closer the Gini coefficient (GINI) to 1, the less equal the distribution of firm sizes in a market, and the lower the IoC. According to this GINI rule, the moderate concentration in the international construction market should refer to a relatively unequal distribution of firm sizes, thus the competition therein is not fierce. In addition, as presented above, concentration decreases as entropy (EN) values increase. The moderate concentration of the international construction market has an entropy value of 1.8049, 76.73% relative to the maximum entropy ($\log 225$). This EN level signifies a relatively low level of concentration and high level of intensity of competition.

To summarize, by comparing the Moderate IoC Model with previous concentration studies, it is apparent that the study of concentration in the international construction market necessitates particular examination. Research findings developed in other sectors or in the area of domestic economy cannot be applied to this particular market. This in turn verifies the inefficiency of the existing concentration measures in investigating IoC in the international construction context.

Using the Moderate IoC Model

It has been found in this study that the Moderate IoC Model is applicable to indicate a moderate concentration (or IoC) in the international construction market. By mapping the evidence against the derived moderate concentration, it will be possible to provide contractors with advice on how they could have a better understanding of concentration situations in the international construction market. For example, it might not be good for contractors to undertake international construction business when the NHI index has been away from the moderate level, which implies that the competition in the market is too fierce.

Although the Moderate IoC Model is able to indicate a moderate concentration for international contractors, there is a limit on what an individual company can do to change the competition. This is particularly true in

the international construction market which is actually formulated by many individual regional parts, for example, US market, Western European market, the Middle East market. Except for the market force, there is no organization to regulate and develop a moderately concentrated international construction market. This is in contrast to the situation in some domestic economies (e.g. China) where governmental departments tend to maintain a moderate IoC by introducing some measures such as qualification system, increasing/decreasing government spending, etc.

Conclusions

A moderate concentration of market shares contributes to the efficiency of market resources allocation. By synthesizing four major concentration methods, namely, concentration ratio (CR_n), the Herfindahl index (HI), entropy, and Gini coefficient, a Moderate IoC Model is developed in this study for identifying moderate concentration in the international construction market. The model is superior to the existing concentration measures in several aspects. The model balances the merits and demerits of the existing concentration measures, elaborates a way for approaching moderate concentration, and is easily computable by using the market shares of the top four construction contractors.

By applying 28 years' data from ENR to the Moderate IoC Model, it is found that the IoC in the international construction market is moderate when CR_4 is 0.2735 and HI is 0.3083 respectively. This gives a reference point against which the IoC level can be compared. The closer the HI value to the point where HI is 0.3083, the more appropriate the concentration status as well as the IoC level. Based on this, the international construction competition was found to be relatively moderate in 1992, 2001 and 2004. The competition intensity in the international construction market during the period has exhibited a wavy trend. This revises a popular view that international construction competition has been increasingly intensifying only since 2002.

By comparing the Moderate IoC Model with previous concentration studies, it is found that the study of concentration in the international construction market necessitates a new examination with new approaches. Research findings developed in other sectors cannot be applied to this particular market. The Moderate IoC Model complements the existing concentration measures in investigating IoC in the international construction context. The identified moderate IoC can be a valuable reference for practitioners to understand characteristics of the international construction market;

it is implied that it is good for contractors to compete for international construction business when the market is approaching its moderate status.

It is claimed that the HI 0.3083 can be a cut-off concentration level for the international construction market. A concentration status can be acceptable, referred to as the buffer zone of concentration, even though it does not reach the ideal concentration situation. Although this study does not exactly provide the buffer zone of concentration, the HI 0.3083 is constructive and informative, as it lays a theoretical foundation for future studies.

References

- Adelman, M.A. (1951) The measurement of industrial concentration. *Review of Economics and Statistics*, **33**(4), 269–96.
- Akintoye, A. and Skitmore, M. (1991) Profitability of UK construction contractors. *Construction Management and Economics*, **9**(4), 311–25.
- Bailey, D. and Boyle, S.E. (1971) The optimal measure of concentration. *Journal of the American Statistical Association*, **66**(336), 702–6.
- Bain, J.S. (1956) *Barriers to New Competition, Their Character and Consequences in Manufacturing Industries*, Harvard University Press, Cambridge, MA.
- Bajo, O. and Salas, R. (2002) Inequality foundations of concentration measures: an application to the Hannah-Kay indices. *Spanish Economic Review*, **4**(4), 311–16.
- Baldwin, R.J. and Gorecki, P.K. (1994) Concentration and mobility statistics in Canada's manufacturing sector. *Journal of Industrial Economics*, **42**(1), 93–103.
- Ball, M., Farshchi, M. and Grilli, M. (2000) Competition and the persistence of profits in the UK construction industry. *Construction Management and Economics*, **18**(7), 733–45.
- Barla, P. (1999) Market share instability in the US airline industry. *Journal of Applied Business Research*, **15**(4), 67–79.
- Bengtsson, M. (1998) *Climates of Competition*, Harwood Academic Publishers, Amsterdam, The Netherlands.
- Bird, K. (1999) Concentration in Indonesian manufacturing, 1975–93. *Bulletin of Indonesian Economic Studies*, **35**(1), 43–73.
- Bonanno, G. and Haworth, B. (1998) Intensity of competition and the choice between product and process innovation. *International Journal of Industrial Organization*, **16**(4), 495–510.
- Bonardi, L. (2001) Analysis of the relationship between advertising, concentration and profitability in the US manufacturing industry. PhD dissertation, Fordham University, New York.
- Boone, J. (2001) Intensity of competition and the incentive to innovate. *International Journal of Industrial Organization*, **19**(5), 705–26.
- Boyes, J.W. and Smyth, J.D. (1979) The optimal concentration measure: theory and evidence for Canadian manufacturing industries. *Applied Economics*, **11**(3), 289–302.
- Carlton, D.W. and Perloff, J.M. (2005) *Modern Industrial Organisation*, Pearson Addison-Wesley, New York.
- Chiang, Y.H., Tang, B.S. and Leung, W.Y. (2001) Market structure of the construction industry in Hong Kong. *Construction Management and Economics*, **19**(7), 675–87.
- Davies, S.W. (1979) Choosing between concentration indices: the ISO-concentration curve. *Economica*, **46**(181), 67–75.
- DJFTC (1997) *Horizontal Merger Guidelines*, US Department of Justice and the Federal Trade Commission, available at http://www.usdoj.gov/atr/public/guidelines/horiz_book/hmg1.html (accessed 15 December 2008).
- Egghe, L. (2005) Zipfian and Lotkian continuous concentration theory. *Journal of the American Society for Information Science & Technology*, **56**(9), 9325–45.
- George, K.D. (1972) Concentration and specialization in industry. *Journal of Industrial Economics*, **20**(2), 107–23.
- Ghosh, A. (1975) Concentration and growth of Indian Industries, 1948–68. *Journal of Industrial Economics*, **23**(3), 203–22.
- Guth, L.A. (1971) Advertising and market structure revisited. *Journal of Industrial Economics*, **19**(2), 179–98.
- Hall, M. and Tideman, N. (1967) Measures of concentration. *Journal of the American Statistical Association*, **62**(317), 162–8.
- Haworth, T.C. and Reuther, J.C. (1978) Industrial concentration and interindustry wage determination. *Review of Economics and Statistics*, **60**(1), 85–95.
- Horowitz, A. and Horowitz, I. (1968) Entropy, Markov process and competition in the brewing industry. *Journal of Industrial Economics*, **16**(3), 196–211.
- Kaplan, A.D.H. (1980). *Big Enterprise in a Competitive System*, revised edn. Greenwood Press, Washington.
- Korkmaz, S. and Messener, J.I. (2007) Competitive positioning and continuity of construction firms in international markets. *Journal of Management in Engineering*, **24**(4), 207–16.
- Kwoka, J.E. (1981) Does the choice of concentration measure really matter? *Journal of Industrial Economics*, **29**(4), 445–53.
- Langford, D. and Male, S. (2001) *Strategic Management in Construction*, Blackwell Science Ltd, Berlin.
- Lipczynski, J. and Wilson, J. (2001) *Industrial Organisation: An Analysis of Competitive Markets*, Pearson Education Limited, Harlow, England.
- Loosemore, M. (1999) International construction management research: cultural sensitivity in methodological design. *Construction Management and Economics*, **17**(5), 553–61.
- Low, S.P., Jiang, H. and Leong, C.H.Y. (2004) A comparative study of top British and Chinese international contractors in the global market. *Construction Management and Economics*, **22**(7), 717–31.
- McCloughan, P. (2004) Construction sector concentration: evidence from Britain. *Construction Management and Economics*, **22**(9), 979–99.
- McCloughan, P. and Abounoori, E. (2003) How to estimate market concentration given grouped data. *Applied Economics*, **35**(8), 973–83.
- Miller, R.A. (1969) Market structure and industrial performance: relation of profit rates to concentration, advertising

- intensity, and diversity. *Journal of Industrial Economics*, **17**(2), 104–18.
- Neumann, M., Weigand, J., Gross, A. and Munter, M.T. (2001) Market size, fixed costs and horizontal concentration. *International Journal of Industrial Organisation*, **19**(5), 823–40.
- Ofori, G. (2003) Frameworks for analysing international construction. *Construction Management and Economics*, **21**(4), 379–91.
- Oster, S.M. (1999) *Modern Competitive Analysis*, Oxford University Press, New York.
- Parker, S.C. (1991) Significantly concentrated markets theory and evidence for the UK. *International Journal of Industrial Organization*, **9**(4), 585–90.
- Rafferty, J., Pasadilla, B., Chiang, Y.H., Hui, E.C.M. and Tang, B.S. (1998) Globalization and construction industry development: implications of recent developments in the construction sectors in Asia. *Construction Management and Economics*, **16**(6), 729–37.
- Ruddock, L. (2002) Measuring the global construction industry: improving the quality of data. *Construction Management and Economics*, **20**(7), 553–6.
- Sawyer, C.M. (1985) *The Economics of Industries and Firms*, Croom Helm, London.
- Shepherd, W.G. (1964) Trends of concentration in American manufacturing industries. *Review of Economics and Statistics*, **46**(2), 200–12.
- Shepherd, W.G. and Shepherd, J.M. (2004) *The Economics of Industrial Organisation*, Waveland Press, Long Grove, IL.
- Shrieves, R.E. (1978) Market structure and innovation: a new perspective. *Journal of Industrial Economics*, **26**(4), 329–47.
- Utton, M.A. (1970) *Industrial Concentration*, Penguin Books Ltd, Harmondsworth, Middlesex.
- Van Kranenburg, H. (2002) Mobility and market structure in the Dutch daily newspaper market segments. *Journal of Media Economics*, **15**(2), 107–23.
- Wang, D. (2004) The Chinese construction industry from the perspective of industrial organization. PhD dissertation, North-western University.
- Wenders, J.T. (1971) Excess capacity as a barrier to entry. *Journal of Industrial Economics*, **20**(1), 14–19.
- White, K.R. (1976) On the choice of a concentration measure. *American Business Law Journal*, **14**(2), 235–41.
- Yu, F.T.S. (2000) *Entropy and Information Optics*, CRC Press, New York.