

Controlling RATS & MICE



House rats and mice, also known as commensal rodents, have long been unwelcome associates of humans. They followed human occupation and development of new countries and are now present in most parts of the world. In contrast to native rats and mice, they are aliens but well established.

Rats and mice live with or close to humans in homes, farm and ranch buildings, grain storage structures, sheds and garages. They are objectionable in many ways:

1. They eat and contaminate food.
2. They damage and destroy property by chewing wires, which may cause fires. They destroy labels on cans and damage sacks and other containers. They undermine buildings, gnaw pipes, chew water hoses, and cut through mortar and cement. They damage wood doors, floors, walls, clothing and furniture.
3. They carry diseases that are health hazards to both human and domestic animals—diseases such as Typhus Fever, Trichinosis, plague, infectious jaundice, Salmonella and rat mite dermatitis.

Identification of Rats and Mice

In order to control rats and mice, one must first be able to identify the species and the degree of infestation. The three commensal rodents are the Norway rat (*Rattus norvegicus*), the roof or black rat (*Rattus rattus*), and the house mouse (*Mus musculus*) (see Fig. 1).

Norway rats burrow under foundations, floors, stacks of goods and rubbish. The roof rat seldom burrows. It normally nests in double walls and attics. If the nest is high, it is usually that of a roof rat. If it is underground, it is almost always a Norway rat. The smaller, neater nests of mice are often found in a variety of places such as under a pile of paper sacks, in loose or baled hay, inside upholstered furniture, and even in cabinet drawers.

The signs of a rat or mouse infestation include droppings, tracks in the moist earth or dusty places, and burrows in the ground, in haystacks and in baled hay. There will be signs of gnawing, greasy smears wherever their bodies have touched walls or rafters, and runways in the grass or through trash. One can smell the presence of rats and mice, especially in a poorly ventilated room.

The degree of infestation (heavy, moderate or low) can be determined by checking for the following signs:

- Droppings:** Numerous or just a few? Scattered or everywhere? Fresh or old?
- Smears:** Faintly seen or very heavy and greasy?
- Runways:** Seldom used or worn smooth by the passage of many rodents?
- Feeding signs:** A solitary rodent may be quite neat about his feeding. If many feed, they may fight between themselves and scatter food.

Sounds: Mice squeal continually in their nests. Rats make running and squealing noises even when not alarmed. Rodent activity increases after dark, which is the best time to listen for them.

Norway rats are not sociable and will not tolerate many of their own in the same vicinity. Forty Norway rats would be considered a heavy population but 100 or more roof rats often live in harmony. Rarely are both Norway and roof rats found living in the same structure.

Methods of Control

An integrated program using rodenticides and traps, removal of shelter, removal of food and water, and rat-proofing is most effective.

Rodenticides

There are many different kinds of rodenticides available. Most are anticoagulants, which cause death by internal bleeding. Anticoagulant rodenticides are available in either single-dose or multiple dose baits. Rats and mice normally begin dying anywhere from 3 to 10 days after feeding on the baits. These rodenticides are formulated as cereal grains, pellets, parafin all-weather blocks, tracking powders, or water soluble formulations.

It is impossible to recognize anticoagulants by trade names alone. In the table of ingredients on the label, the active ingredient is identified by such chemical names as chlorophacinone, diphacinone, fumarin, Rival, PMP, prolin, warfarin, brodifacoum or bromadiolone. These anticoagulants can be purchased in ready-to-use forms at farm and ranch supply stores, nurseries or grocery stores.

Proper placement of baits can be as important as the type of bait used, or more so. Place all baits in rodent travel ways or near their burrows and harborage. Do not expect rats or mice to go out of their way

to feed on the baits, even though they do occasionally. The best idea is to locate the bait where it will be in the rodents' normal line of travel.

Results cannot always be measured by counting dead rats and mice. When baits are no longer being eaten, when there are no fresh droppings, and when no live rats or mice are seen, results are as good as can be expected from any type of bait.

Although these rodenticides are generally safe to use, care should be taken in placing them so that neither people nor domestic animals have access to them. Containers known as bait boxes can be either purchased or constructed. Bait boxes protect baits from the weather and restrict access mainly to rodents, providing an excellent safeguard for people, pets, and other animals. As with any poisonous material, if ingested contact a physician or poison control center. The label directions should always be read and followed exactly.

Traps

Traps are just as effective as rodenticides, but they require more skill and labor. Rodent traps include snap traps, cage traps and glue boards. They are recommended where the use of rodenticides seems inadvisable, and in places where there are few rats and mice. The best place to set traps is along travel routes where rodent sign is evident. Snap traps should be set perpendicular to the base of the wall and in such a manner that

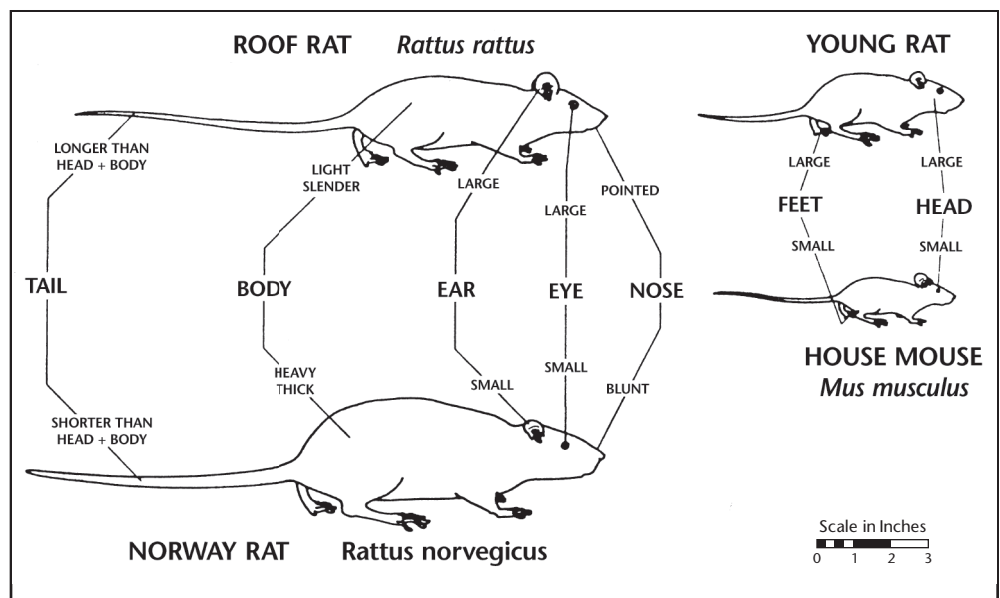


Figure 1. Field identification of commensal rodents.

the rodent, in following its natural course, will pass directly over the trigger. To make the trap more effective, a 2-inch by 2-inch piece of cardboard can be attached to the trigger (see Fig. 2). Glue boards and cage traps should be placed parallel to the base of the wall.

The selection of baits for trapping is important. Baits should be fresh and changed daily.

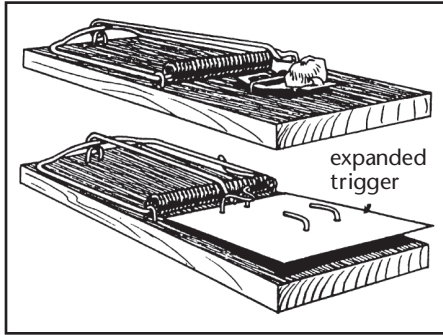


Figure 2. A trap trigger can be extended with a piece of cardboard.

It is more effective to use a variety of baits on successive traps than a single kind of bait. Fruit, peanut butter and nuts all make good baits.

Removal of Shelter

Commensal rodent shelters are provided by lumber piles, accumulations of trash and other stored materials. Waste, such as empty boxes and cartons, should be disposed of promptly so that it will not serve as harborage for rodents. Materials should be stored at least 18 inches off the ground or floor, and with space between the material and the wall.

Removal of Food and Water Supply

The best way to eliminate the food supply is to store foodstuffs in rodent-proof containers such as glass or metal, and to dispose of waste and garbage in tightly covered metal cans (see Fig. 3). Mending leaky faucets and doing away with water storage areas that rodents have access to also is an essential part of rat and mouse control.

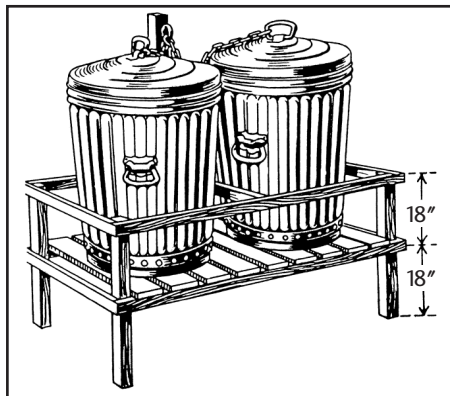


Figure 3. Garbage should be stored in metal containers and placed at least 18 inches off the ground.

Biology and Reproduction

Norway Rat

Adult weight: Seven to 18 ounces.

Total length: 11 to 19 inches including tail.

Color: Gray with a white underside.

Body: Large, robust.

Tail: Shorter than body, dark above, pale below, furless.

Gestation period: 21 to 23 days.

Litter size: Two to fourteen, average seven to eight.

Litter number: Four to six per year with heaviest production of young in the spring and fall.

Weaning: 3 to 4 weeks, reach reproductive maturity at 3 months.

Life span: 1 to 2 years.

Roof Rat

Adult weight: 5 to 10 ounces.

Total length: 12 to 18 inches including tail.

Color: Grayish-black with a pale yellow underside.

Body: Sleek and graceful.

Tail: Longer than body, furless.

Gestation period: 21 to 23 days.

Litter size: Five to eight.

Litter number: Three or more per year with heaviest production of young in the winter and spring.

Weaning: 3 to 4 weeks; reach reproductive maturity at 3 months.

Life span: 1 to 2 years.

House Mouse

Adult weight: ½ to 1 ounce.

Total length: 5 to 8 inches including tail.

Color: Grayish-brown.

Tail: Furless.

Gestation period: 19 to 21 days.

Litter size: Five to six.

Litter number: Thirteen per year.

Weaning: 3 weeks; reach reproductive maturity at 6 to 10 weeks.

Life span: 1 year.

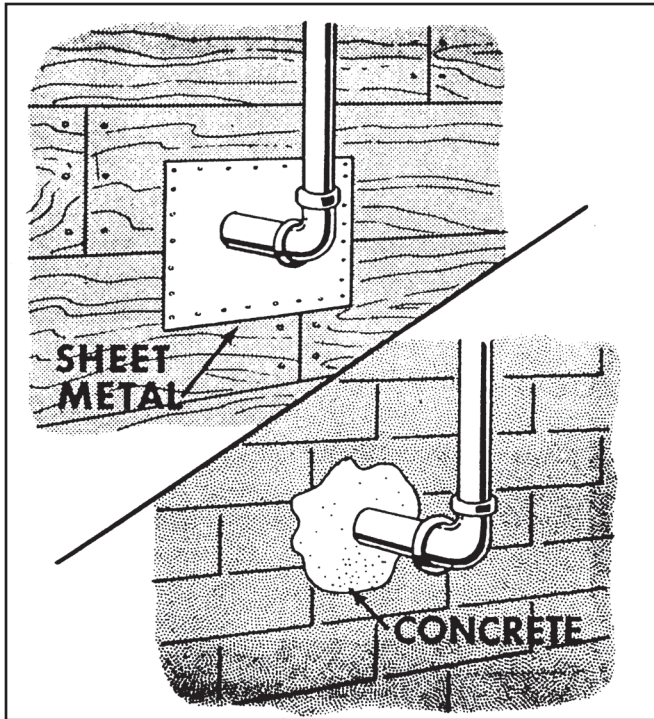


Figure 4. Openings can be sealed with sheet metal, concrete or similar materials.

Rat-proofing

Whenever it can be accomplished at a reasonable cost, rat-proofing is recommended as the most permanent means of control. All openings rodents can enter should be covered with rat-resistant materials such as $\frac{1}{4}$ -inch hardware cloth or steel wool. Doors should be closed when not in use, and all edges subject to gnawing should be covered with metal. Unnecessary openings should be covered with concrete or sheet metal (see Fig. 4). Concrete also can be used to prevent rats from burrowing under foundations.

For additional information contact the nearest office of Texas Cooperative Extension-Wildlife Services.

TCE—Wildlife Services
P.O. Box 100410 • San Antonio, Texas 78201-1710

The information given herein is for educational purposes only. Reference to commercial products or trade names is made with the understanding that no discrimination is intended and no endorsement by the Texas AgriLife Extension Service is implied.

Produced by AgriLife Communications and Marketing, The Texas A&M University System
Extension publications can be found on the Web at: <http://AgriLifeBookstore.org>.
Visit Texas AgriLife Extension Service at <http://AgriLifeExtension.tamu.edu>.

Educational programs of the Texas AgriLife Extension Service are open to all people without regard to race, color, sex, disability, religion, age, or national origin.

Issued in furtherance of Cooperative Extension Work in Agriculture and Home Economics, Acts of Congress of May 8, 1914, as amended, and June 30, 1914, in cooperation with the United States Department of Agriculture. Edward G. Smith, Director, Texas AgriLife Extension Service, The Texas A&M University System.
0.5M, Reprint