



Pattern
Alteration

Back Hip Fullness

AgriLIFE EXTENSION
Texas A&M System

Extension Family Development
and Resource Management Specialists

Before attempting this alteration, review Extension publications E-372, *Principles of Pattern Alteration*, and E-373, *Personal Measurement Chart*. For other hip area alterations, refer to Extension publications E-386, *Even Hip Circumference*, and E-390, *Special Alterations for Pants*.

This publication describes altering garments to fit a figure with flat or full buttocks. Carefully studying your body and checking how garments fit will help you decide if these alterations will solve your fitting problem. On a figure with *flat* buttocks, the garments will appear wrinkled. Folds form at the buttocks, producing a sag in skirts and pants (Fig. 1). On a figure with *full* buttocks, the fabric wrinkles horizontally across the buttocks, and side seams might pull. The garment usually pulls away from the waistline in the back, and the skirt grainline and hemline rise. The side seam might pull toward the back (Fig. 2).

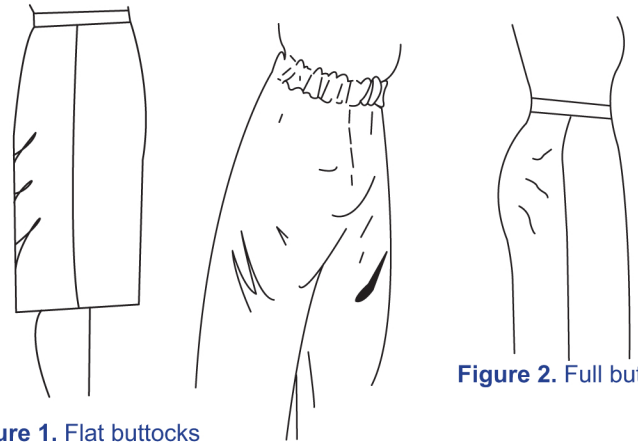


Figure 1. Flat buttocks

Figure 2. Full buttocks

Body and pattern measurements on your *Personal Measurement Chart* can help you determine how much to alter. Compare the hip measurements at the widest point to the actual pattern measurements at the same point. On pants, compare the back crotch length (or circumference) to the pattern back crotch length to determine the total amount to lengthen or shorten. Because you alter the pattern at two locations, you will increase or decrease the crotch length at each slash by one-half of your total alteration.

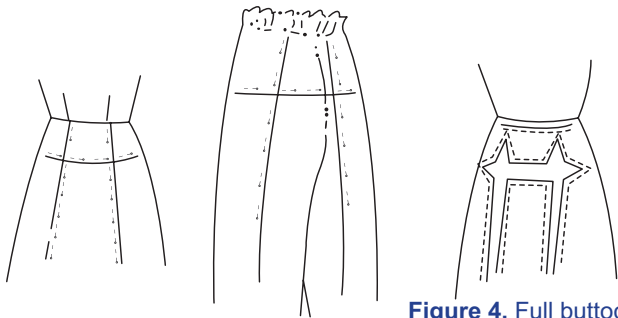


Figure 3. Flat buttocks

Figure 4. Full buttocks

The best way to determine how much to alter is to look at a basic fitting garment or an old garment which is the same size as the pattern you're using. For *flat* buttocks, have someone pin the excess fabric across the buttocks vertically and horizontally until the wrinkles or folds disappear. Then note these amounts for alterations (Fig. 3). Slash and spread the garment for *full* buttocks, adding fabric to remove wrinkles and pulls. Note the length and width amounts you need (Fig. 4).

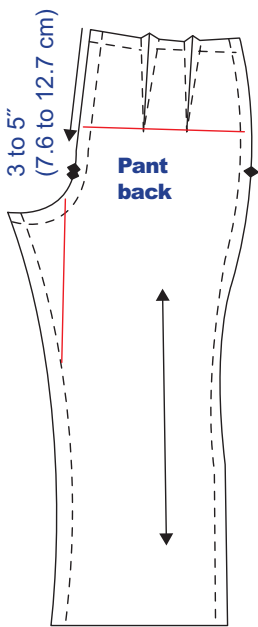


Figure 5.

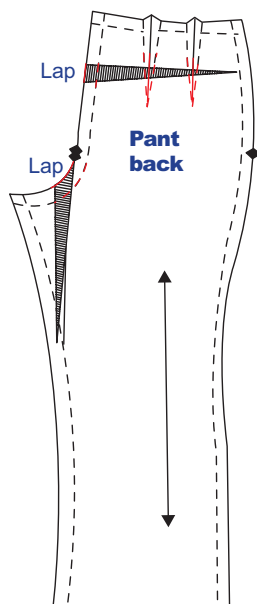


Figure 6.

Altering the pant back pattern piece only

1. Draw a horizontal line across the pattern 3 to 5 inches (7.6 cm to 12.7 cm, depending on the pattern size) below the waistline at a right angle to the grainline.
2. Draw a vertical line from the crotch curve to the seamline approximately at the knee (Fig. 5).
3. Beginning at the crotch curve seamline, slash the vertical line *to, but not through*, the leg inseam line. Then slash the horizontal line *to, but not through*, the side seamline. Clip seam allowances at the end of each slash.

Decreasing for flat buttocks

1. Lap the horizontal and vertical slashes by the amount you need to decrease in length and width. Taper to the edge of the fabric at the knee and to the side seamline. Tape the pattern in place.
2. Redraw the darts, seam and cutting lines. Straighten the grainline arrow if needed (Fig. 6).

Increasing for full buttocks

1. With tissue paper under the pattern, spread the horizontal and vertical slashes by how much width and length you need. Tape the pattern in place (Fig. 7).
2. Add tissue paper under the pattern at the center back and tape it in place. Redraw the center back seam and cutting lines. Increase the size of one or more darts as needed to maintain waist circumference.
3. Redraw the curve in the crotch seam and cutting lines. If necessary, redraw the darts and shorten the length (Fig. 8).

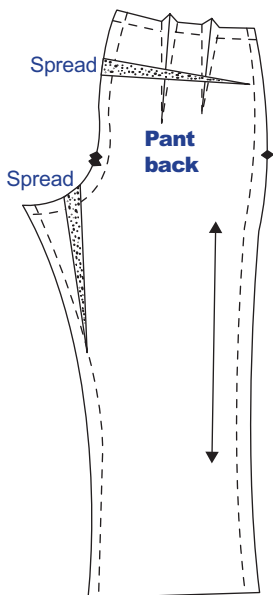


Figure 7.

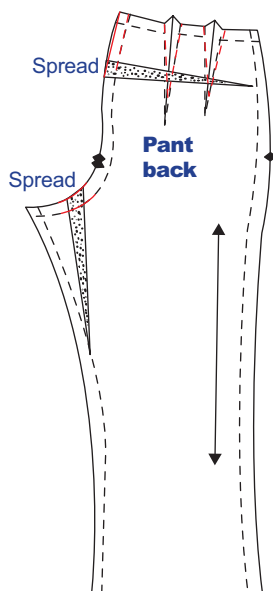


Figure 8.

Pants

Skirt or Dress



Altering the back pattern piece only

1. At the center back, measure from the waistline to the point on the pattern that corresponds to the fullest or narrowest part of the buttocks. Draw a horizontal line from that point across the pattern to the side seamline at a right angle to the center back or grainline. From the side seam and waist seamline (or waistline mark intersection), draw a vertical line to the hem line and parallel to the center back or grainline (Figs. 9a and 9b).
2. Slash along the horizontal line *to, but not through*, the vertical line. Next slash along the vertical line from the hemline *to, but not through*, the waistline and side seam intersection. Then slash across *to, but not through*, the side seamline at the hip. Clip the seam allowances at the end of the slashes.

Decreasing for flat buttocks

1. Lap the horizontal slash at the center back by the amount you need, tapering to the vertical slash. Tape the pattern in place.
2. Lap the vertical slash (at the horizontal slash) one-half of the total decrease you need, tapering to the waistline and side seam intersection. Below the horizontal slash, keep the vertical lap a uniform width to the hemline. Lengthen the darts if necessary and tape the pattern in place.
3. Redraw the center back seam and cutting lines or the foldline. Connect the grainline arrow and smooth the hipline seam and cutting lines if necessary (Figs. 10a and 10b).

Increasing for full buttocks

1. With tissue paper under the pattern, spread the horizontal slash at the center back by the amount you need. Taper to the vertical slash and then tape the pattern in place.
2. Spread the vertical slash one-half of the total increase you need at the horizontal line, tapering to the intersection of the side and waist seamline. Keep the spread a uniform width to the hemline below the horizontal slash. (The short horizontal slash will lap slightly.) Tape the pattern in place.
3. Connect the grainline arrow and shorten the darts if necessary. Redraw the center back seam and cutting lines or foldline. You might have to smooth the hip seamlines and hemline (Figs. 11a and 11b).

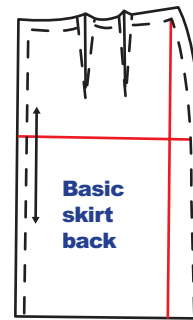


Figure 9a.

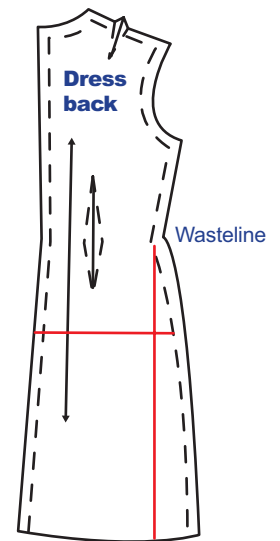


Figure 9b.

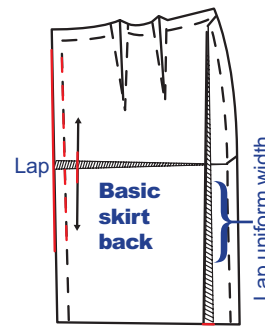


Figure 10a.

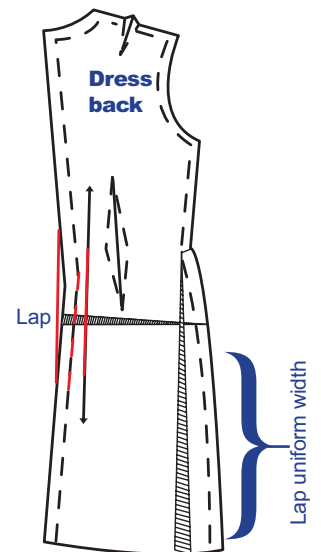


Figure 10b.

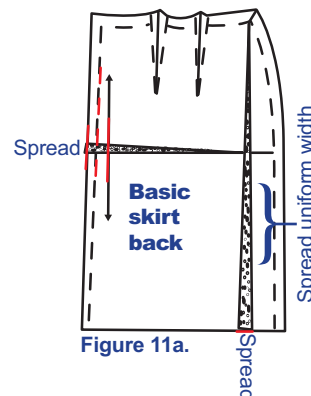


Figure 11a.

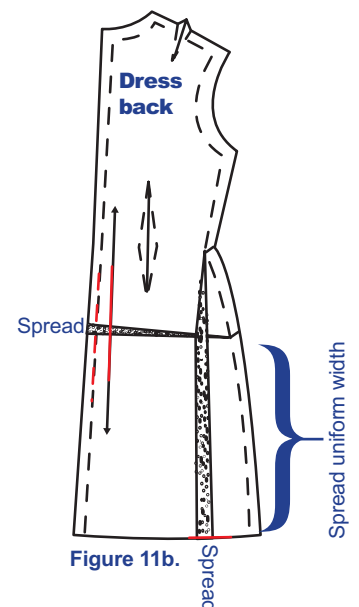


Figure 11b.

Beverlu Rhoades wrote the original manuscript for this publication.

Produced by AgriLife Communications and Marketing, Texas A&M System
Extension publications can be found on the Web at: <http://AgriLifebookstore.org>

Visit the Texas AgriLife Extension Service at <http://texasextension.tamu.edu>

Educational programs of the Texas AgriLife Extension Service are open to all people without regard to race, color, sex, disability, religion, age, or national origin.
Issued in furtherance of Cooperative Extension Work in Agriculture and Home Economics, Acts of Congress of May 8, 1914, as amended, and June 30, 1914, in cooperation with the United States Department of Agriculture. Edward G. Smith, Director, Texas AgriLife Extension Service, Texas A&M System.