

## **Appendix A**

### **Preliminary Research Results into Other Agencies Serving Water Resource Data on the Web**

**Name:** **PAG (Pima Association of Governments) Regional Data Center**  
**Location:** **PAG: City of Tucson, Arizona**  
**Purpose:** **Serves as a regional data clearinghouse**  
**URL:** **<http://www.pagnet.org>**

### **General Structure**

Layout: Simple

Search Capabilities: No text searches for data

Languages Used: HTML and JAVA

Data Types: GIS ready data files

Data Sets: US Census TIGER data, Orthophotos from 16 feet to 1 foot, Multispectral data at 1 meter, parcel data, road data

Viewing Method: ArcIMS application

Download Method: FTP

Download Format: Zip file

Database Type: Warehouse/Distributed

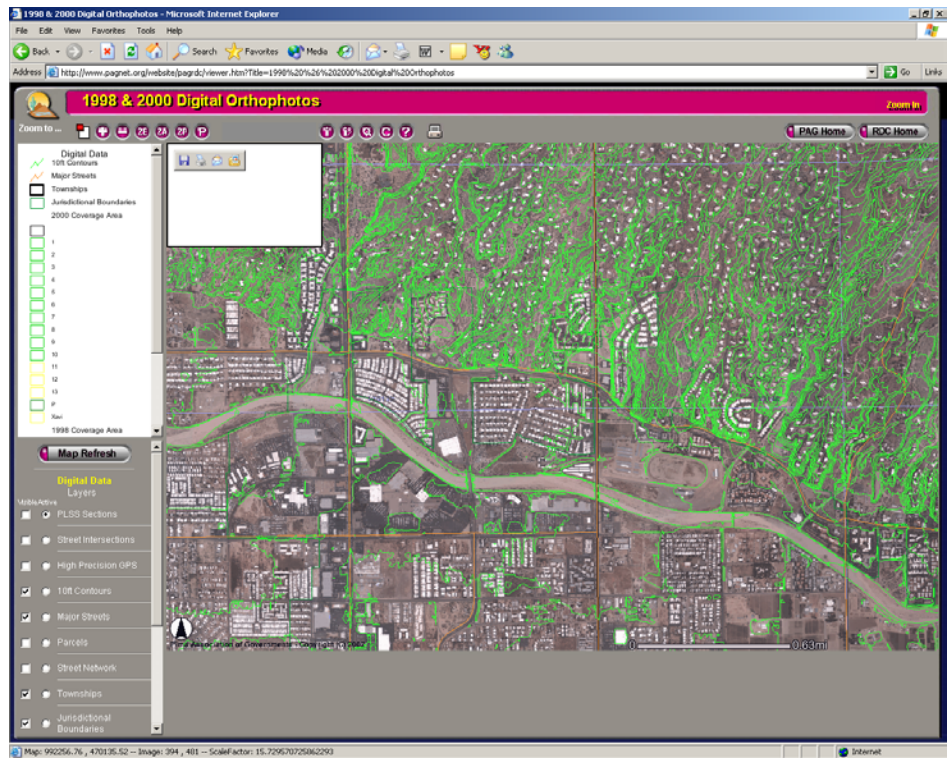
ArcIMS Capable: Yes

IMS Data Served: Air quality application, orthophoto application, population planning application

Online Databases: Possible links using ArcIMS

Metadata: Basic metadata available for all data layers

Other: Orthophotos available on CD for a fee, Air Quality links point to outside site



**Name:** PDNMAPA (Paso Del Norte Maps for Public Access)  
**Location:** UTEP, El Paso, Tx  
**Purpose:** Serves as a regional data clearinghouse  
**URL:** <http://www.pdnmapa.org>

### **General Structure**

Layout: Simple

Search Capabilities: Menu driven search capabilities, no free text

Languages Used: HTML and JAVA

Data Types: GIS ready data files

Data Sets: Aerial photography, parcel features, street features, misc. data layers

Viewing Method: ArcIMS application, selected static maps

Download Method: FTP

Download Format: Zip file, static maps in image format

Database Type: Warehouse/Distributed

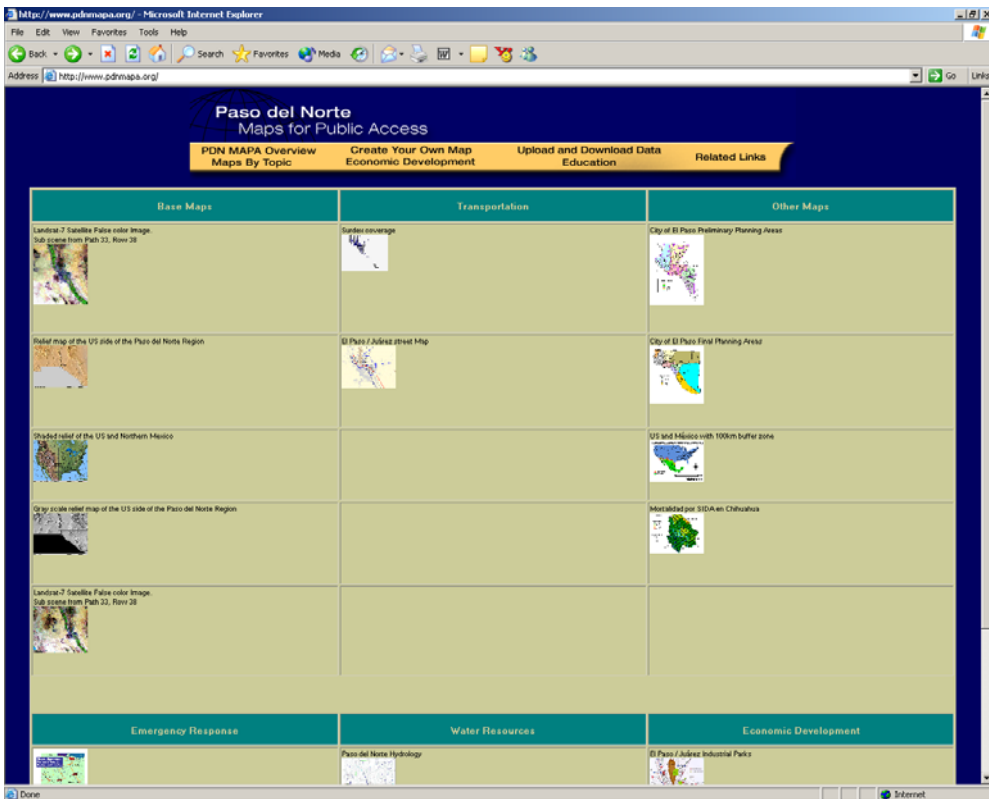
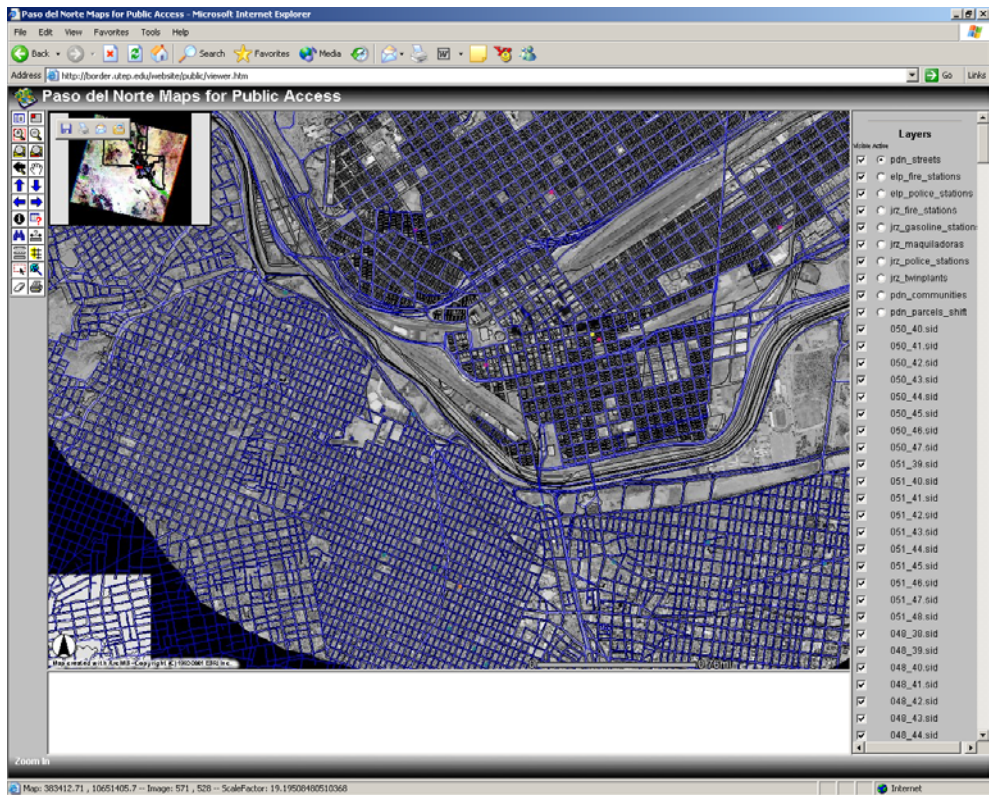
ArcIMS Capable: Yes

IMS Data Served: Aerial photography, parcel features, street features, misc. data layers

Online Databases: None

Metadata: None

Other: None



**Name:** **RGIS (Resource Geographic Information System)**  
**Location:** **University of New Mexico, Albuquerque**  
**Purpose:** **Serves as State GIS Clearinghouse**  
**URL:** **<http://rgis.unm.edu>**

### **General Structure**

Layout: Simple

Search Capabilities: Data searches by text and extent<sup>1</sup>

Languages Used: HTML and JAVA

Data Types: Tabular and GIS ready data files

Data Sets: US Census TIGER data, GNIS data, USGS DEMs and DOQQs, USGS DRGs, and County E-911 road data.

Viewing Method: Snapshot of data in an image format

Download Method: FTP

Download Format: Zip file

Database Type: Warehouse

ArcIMS Capable: Yes

IMS Data Served: Reference data only, simple design

Online Databases: None

Metadata: Extensive FGDC metadata for all data layers

Other: Data available on CD for a fee

---

<sup>1</sup> Geographical extent defines data layers using a keyword. There is no actual selection process using coordinates or interactive selection methods.

RGIS FTP - Microsoft Internet Explorer

Address: http://rgis.unm.edu/loader\_dir.cfm?theme=Digit%20Orthophotos

## RGIS

New Mexico Resource Geographic Information System Program

RGIS Home    FAQ's    Reference Map    Glossary    Order Help

- 7.5 Minute Topographic Map
- Boundaries
- Cities and Towns
- Climate
- Digital Orthophotos
- Elevation
- Geographic Place and Feature Names
- Geology
- Land Ownership
- Land Use/Land Cover
- PLS (Township, Range, Section)
- Quad Grids and Section Control
- Shaded Relief
- Socioeconomic Data
- Soils
- Transportation
- Vegetation
- Water Resources
- expandable
- shrinkable
- not expandable or shrinkable

Extent Search    Free Text Search

### Digital Orthophotos -- Records 1- 10 of 5034

File Description (link to metadata)	Extent	Image	Arc Export	Shape	File	NRSID Resource Name
<a href="#">Abbott Lake NE Quarter</a>	Abbott Lake 7.5 Minute Quad, NE Quarter	<a href="#">View</a>				<a href="#">Download</a>
<a href="#">Abbott Lake NW Quarter</a>	Abbott Lake 7.5 Minute Quad, NW Quarter	<a href="#">View</a>				<a href="#">Download</a>
<a href="#">Abbott Lake SE Quarter</a>	Abbott Lake 7.5 Minute Quad, SE Quarter	<a href="#">View</a>				<a href="#">Download</a>
<a href="#">Abbott Lake SW Quarter</a>	Abbott Lake 7.5 Minute Quad, SW Quarter	<a href="#">View</a>				<a href="#">Download</a>
<a href="#">Abeytas NE Quarter</a>	Abeytas 7.5 Minute Quad, NE Quarter	<a href="#">View</a>				<a href="#">Download</a>
<a href="#">Abeytas NW Quarter</a>	Abeytas 7.5 Minute Quad, NW Quarter	<a href="#">View</a>				<a href="#">Download</a>
<a href="#">Abeytas SE Quarter</a>	Abeytas 7.5 Minute Quad, SE Quarter	<a href="#">View</a>				<a href="#">Download</a>
<a href="#">Abeytas SW Quarter</a>	Abeytas 7.5 Minute Quad, SW Quarter	<a href="#">View</a>				<a href="#">Download</a>
<a href="#">Abiquiu NE Quarter</a>	Abiquiu 7.5 Minute Quad, NE Quarter	<a href="#">View</a>				<a href="#">Download</a>
<a href="#">Abiquiu NW Quarter</a>	Abiquiu 7.5 Minute Quad, NW Quarter	<a href="#">View</a>				<a href="#">Download</a>

Quick Access to a Page of Data Listings:  
(10/Page)

1 2 3 4 5 6 7 8 9 10 11 12 13 14 15 16 17 18 19 20 21 22 23 24 25 26  
 27 28 29 30 31 32 33 34 35 36 37 38 39 40 41 42 43 44 45 46 47 48 49  
 50 51 52 53 54 55 56 57 58 59 60 61 62 63 64 65 66 67 68 69 70 71 72  
 73 74 75 76 77 78 79 80 81 82 83 84 85 86 87 88 89 90 91 92 93 94 95  
 96 97 98 99 100 101 102 103 104 105 106 107 108 109 110 111 112 113 114

**Name:** SANDAG (San Diego Association of Governments)  
**Location:** SANDAG, San Diego, CA  
**Purpose:** Serves as a regional data clearinghouse  
**URL:** <http://www.sandag.org>

### **General Structure**

Layout: Simple

Search Capabilities: No text searches for data

Languages Used: HTML and JAVA

Data Types: GIS ready data files

Data Sets: Administrative boundaries, base map features, district boundaries, land cover and activity centers, transportation, and environmental/natural resources

Viewing Method: Static map in image format

Download Method: FTP

Download Format: Zip file

Database Type: Warehouse/Distributed

ArcIMS Capable: Yes

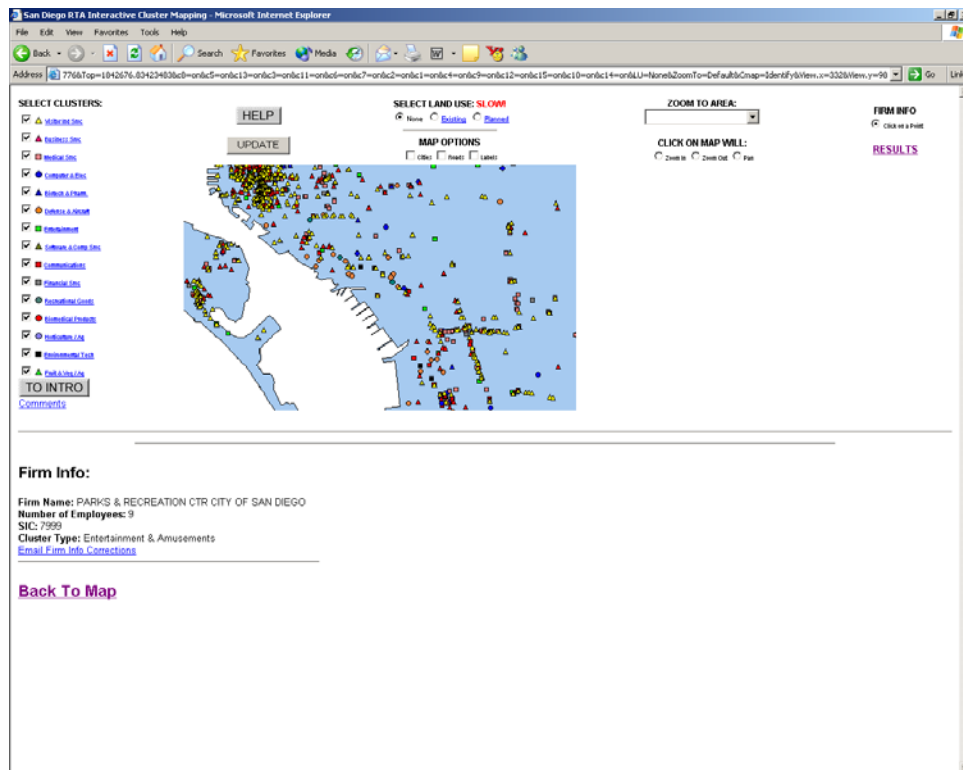
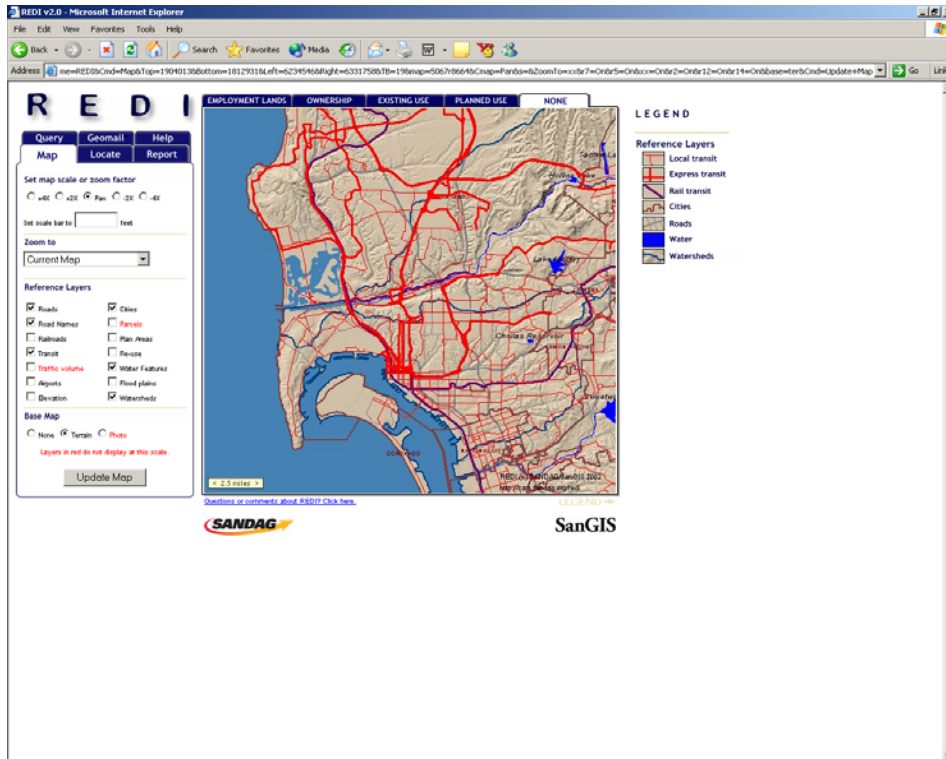
IMS Data Served: Demographic and Economic Mapping System, Industrial Cluster Applications, Traffic Forecast Application, eStops, Regional Economic Development Information

Online Databases: Possible links using ArcIMS

Metadata: Basic metadata available for all data layers

Other:





**Name:** TCEQ (Texas Commission on Environmental Quality)  
**Location:** TCEQ Austin  
**Purpose:** Serves as a source of environmental data  
**URL:** <http://www.tceq.state.tx.us>

### **General Structure**

Layout: Simple

Search Capabilities: Limited text search, online queries for some databases

Languages Used: HTML

Data Types: Tabular data sets only

Data Sets: Environmental data, water quality, permitting data, cleanup data, real-time pollution data, weather data and live satellite images

Viewing Method: Snapshot of data in an image format, published GIS maps, tables in HTML format

Download Method: FTP where possible

Download Format: Zip file, (Excel spreadsheets)

Database Type: Warehouse

ArcIMS Capable: Yes

IMS Data Served: Limited water quality data

Online Databases: Numerous

Other: Data (tabular, reports) available in hard copy for fee

## Online Database Example

Name: Water Utilities Database (WUD)

Query Options: Water district name, water district number, water utility name, CCN registration number, public water system name or ID

Data Available: Maps in PDF format, tables in HTML format, water district and system reports, etc.

Download Method: Not available

## Sample Pages

**Texas Natural Resource Conservation Commission**  
 Rules | Calendar | Publications | Forms | About TNRCC | Help  
**TNRCC** Same Agency, New Name! on Sept. 3, 2001  
 Districts | Utilities | PWSs | Maps | Documents | Reports | WUD Mail

Utility details for 439 WATER SUPPLY CORPORATION (10001)

**Properties**  
 Utility Type: WATER UTILITY  
 Ownership Type: WATER SUPPLY CORPORATION  
 Primary County: BELL  
 County Code: 14

**Official Address / Phone**  
 PWS for this Utility

PWS Name	PWS ID	Status	District/Number
439 WATER SUPPLY CORPORATION	0140076	A	

**Counties**

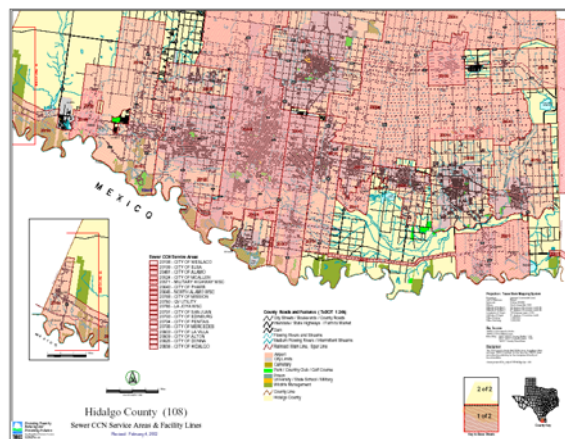
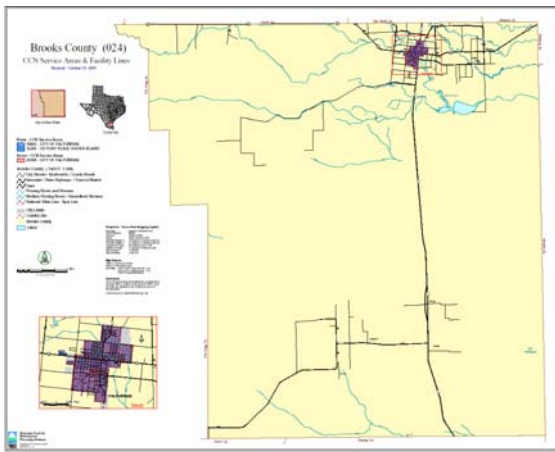
Code	County Name	Primary
14	BELL	Y

**Activity**  
 Activity Status: ACTIVE  
 End Date: 12/31/9999

Run Utility Cases Based  
 Run Utility Summaries Based

Utility successfully retrieved

Fee Information	BYE Year	BYE Period	Date Paid	Amount Paid	Total Amount
	2009	4	01/14/2009	\$2,743.02	\$448,610.82
	2008	4	01/16/2008	\$2,952.14	\$570,428.77
	1999	4	01/16/2000	\$2,561.31	\$512,262.82
	1998	4	01/16/1999	\$418.98	\$93,110.81
		3	10/06/1998	\$686.87	\$152,636.35
		2	07/16/1998	\$527.29	\$117,176.45
		1	04/15/1998	\$328.99	\$73,108.16
	1997	4	01/22/1998	\$363.76	\$82,169.55
		3	10/06/1997	\$538.15	\$119,589.40
		2	07/11/1997	\$331.99	\$73,775.17
		1	04/15/1997	\$312.19	\$69,374.45
	1996	4	01/15/1997	\$313.73	\$69,713.32
		3	10/15/1996	\$487.72	\$110,608.20
		2	07/15/1996	\$442.94	\$98,431.45
		1	04/01/1996	\$327.80	\$72,846.17
	1995	4	01/20/1996	\$322.72	\$71,714.85
		3	10/17/1995	\$440.94	\$97,987.72
		2	07/17/1995	\$305.86	\$67,870.20
		1	04/17/1995	\$263.79	\$60,618.45
	1994	4	01/17/1995	\$294.53	\$66,793.47
		2	07/19/1994	\$276.83	\$61,516.50
		1	04/11/1994	\$251.66	\$55,823.80
	1993	4	01/19/1994	\$261.31	\$59,289.00
	1992	3	01/06/1994	\$385.05	\$85,569.00
	1991	3	10/16/1993	\$414.06	\$92,014.00
		2	07/21/1993	\$272.26	\$60,506.98
		1	04/16/1993	\$246.36	\$54,204.80
	1990	4	01/20/1993	\$279.76	\$62,737.77
		3	10/16/1992	\$320.87	\$71,304.00
		2	07/19/1992	\$247.72	\$55,249.83
		1	04/17/1992	\$228.85	\$50,408.00
	1989	4	02/06/1992	\$316.21	\$70,269.50



**Name:** TNRIS (Texas Natural Resources Information System)  
**Location:** TNRIS Austin, Tx  
**Purpose:** Serves as a state clearinghouse for natural resource data and imagery  
**URL:** <http://www.tnris.state.tx.us>

### **General Structure**

**Layout:** Simple

**Search Capabilities:** Searches available for imagery by text (county name, quad name, and lat-long)

**Languages Used:** HTML and JAVA

**Data Types:** GIS ready data files

**Data Sets:** US Census TIGER data, Orthophotos, Colonias locations, general hydrography, irrigation canals, DRGs, transportation features .

**Viewing Method:** ArcIMS applications

**Download Method:** Download data by county using ArcIMS (FTP), FTP service available

**Download Format:** Zip file

**Database Type:** Warehouse/Distributed

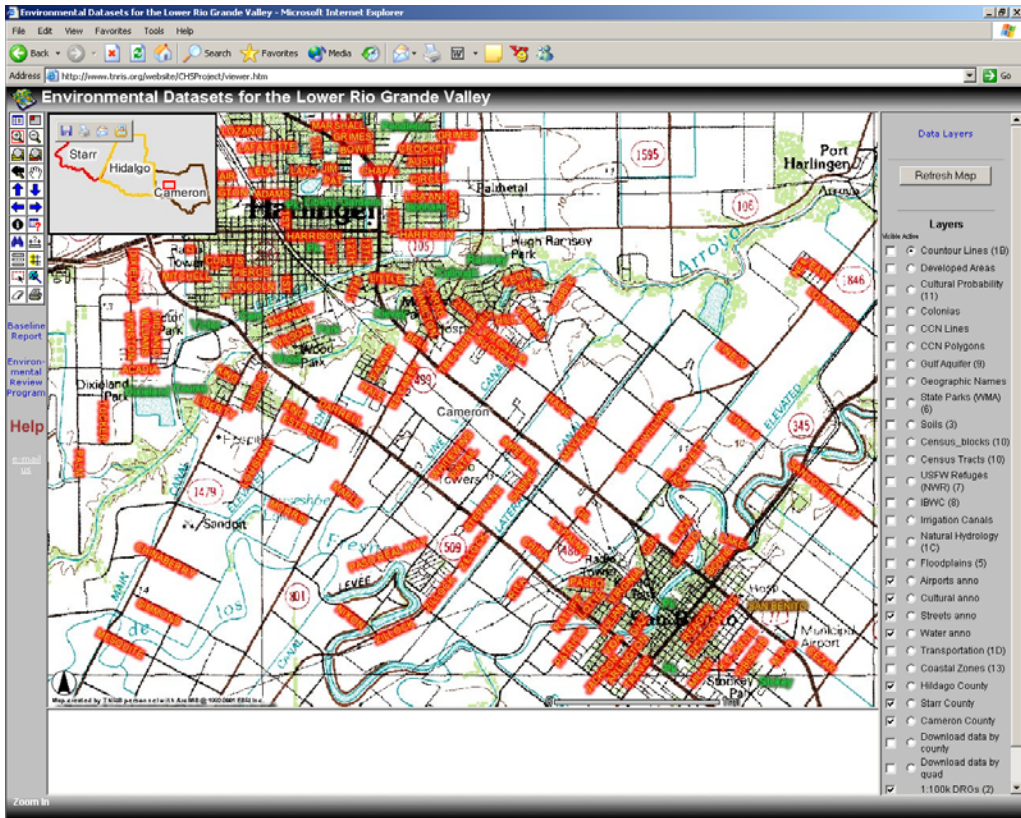
**ArcIMS Capable:** Yes

**IMS Data Served:** DOQQ applications, environmental applications, bay water applications (sea-level and salinity)

**Online Databases:** None

**Metadata:** Basic metadata available for all data layers

**Other:** Orthophotos and data available on CD for a fee, Air Quality links point to outside site, links to additional data outside site



TNRIS - Data Catalog - Microsoft Internet Explorer

Address: http://www.travis.state.tx.us/DigitalData/data\_cat.htm#Administrative%20Areas

TEXAS NATURAL RESOURCES INFORMATION SYSTEM

TNRIS Home | Up One Level | News | Ordering | Research Center

TNRIS - Site Map | Information Services | StateMap | Border Center | Education

Metadata | Links | About TNRIS

TNRIS Home  
Up One Level

TNRIS

Location:  
1700 N. Congress  
Room 3-40  
Austin, Texas

Mailing Address:  
PO Box 12211  
Austin, TX 78711-2211

Phone:  
512-463-8337

Fax:  
512-463-7274

### Data Catalog

The data catalog is divided into subject areas:

- Administrative Areas**  
county boundaries, legislative districts, zip codes
- Atmospheric Resources**  
air quality, weather
- Energy and Mineral Resources**  
oil and gas reservoirs
- Imagery and Raster Data**  
digital orthophoto quadrangles (DOQs), digital raster graphics (DRGs)
- Land and Biological Resources**  
land use/land cover, soils, elevation
- Land and Water Quality**  
waste sites, water supply
- Transportation**  
airports, roads, waterways
- Water Resources**  
aquifers, streams, wetlands

Click on the links to download data. The WWW symbol (🌐) indicates data located on a remote web site.

Data sets located on the TNRIS site are generally available as ArcInfo export files (.e00) and are zipped together with a readme file. Most of these files are available in two coordinate systems: **Decimal Degrees** (latitude and longitude) and **Texas State Mapping System (TSMS)**, a Lambert Conformal Conic projection with parameters specific to Texas. See our [projections page](#) for more information about some of the projections commonly used in Texas.

For more information about GIS and file compression formats, please see our [File Formats](#) page.

### Administrative Areas

Dataset	Download
<b>Government Agencies</b>	
<b>Coastal Management Zone Boundary</b> Inland extent of areas subject to regulation under the Texas Coastal Management Program. From the Texas General Land Office.	<a href="#">GLO Data Index</a> 🌐
<b>Ground Water Conservation Districts</b> From the Texas Water Development Board	<a href="#">Data Metadata</a> 🌐
<b>OSPRa Coastal Facility Designation Line</b> Oil Spill Prevention and Response Program jurisdictional	

Internet Explorer window: TNRS - Data Catalog - Microsoft Internet Explorer

Address: [http://www.tnris.state.tx.us/DigitalData/data\\_cat.htm#Administrative%20Areas](http://www.tnris.state.tx.us/DigitalData/data_cat.htm#Administrative%20Areas)

Floodplains	
<b>FEMA Digital 03 Flood Data</b> From the Federal Emergency Management Agency.	<a href="#">Data</a>
Ground Water	
<b>Major Aquifers</b>	<a href="#">Decimal Degrees</a> <a href="#">TSMS</a>
<b>Minor Aquifers</b>	<a href="#">Decimal Degrees</a> <a href="#">TSMS</a>
Marine Coastal Waters	
<b>Texas General Land Office</b> Many datasets pertaining to the Texas Gulf Coast available for download.	<a href="#">GLO Data Index</a>
<b>Bathymetry</b> From the Texas General Land Office.	<a href="#">GLO Data Index</a> <a href="#">Metadata</a>
<b>Washover Areas</b> From the Texas General Land Office.	<a href="#">GLO Data Index</a> <a href="#">Metadata</a>
Surface Water	
<b>Designated Stream Segments</b> From the Texas Natural Resource Conservation Commission.	<a href="#">Data</a> <a href="#">Metadata</a>
<b>HUCs</b> From the Texas Natural Resource Conservation Commission.	<a href="#">Data</a> <a href="#">Metadata</a>
<b>National Hydrography Dataset</b> The National Hydrography Dataset (NHD) is a comprehensive set of digital spatial data that contains information about surface water features such as lakes, ponds, streams, rivers, springs and wells. Scale: 1:100,000. From the U.S. Geological Survey.	<a href="#">Data</a> <a href="#">About NHD</a>
<b>Reservoirs</b>	<a href="#">Decimal Degrees</a> <a href="#">TSMS</a>
<b>River Basins</b> From the Texas Water Development Board.	<a href="#">Data</a> <a href="#">Metadata</a>
<b>Stream Segment Boundaries</b> From the Texas Natural Resource Conservation Commission.	<a href="#">Data</a> <a href="#">Metadata</a>
<b>Streams</b>	<a href="#">Decimal Degrees</a> <a href="#">TSMS</a>
<b>Surface Water Rights Diversion Points</b> From the Texas Natural Resource Conservation Commission.	<a href="#">Data</a> <a href="#">Metadata</a>
Wetlands	

Address bar: [http://ftp.tnris.state.tx.us/Water\\_Resources/Surface\\_Water/hydrography/streams\\_ts\\_e00](http://ftp.tnris.state.tx.us/Water_Resources/Surface_Water/hydrography/streams_ts_e00)

**Name:** TWDB (Texas Water Development Board)  
**Location:** TWDB  
**Purpose:** Serves as a national clearinghouse for well locations and reservoir water levels  
**URL:** <http://www.twdb.state.tx.us/data/waterwells/>

### **General Structure**

**Layout:** Simple

**Search Capabilities:** No text searches for data

**Languages Used:** HTML and JAVA

**Data Types:** HTML tables and graphs, text tables

**Data Sets:** Well location/reservoir water levels

**Viewing Method:** Interactive Image Maps

**Download Method:** N/A

**Download Format:** Tab delimited text files

**Database Type:** Distributed (Links to the USGS well data)

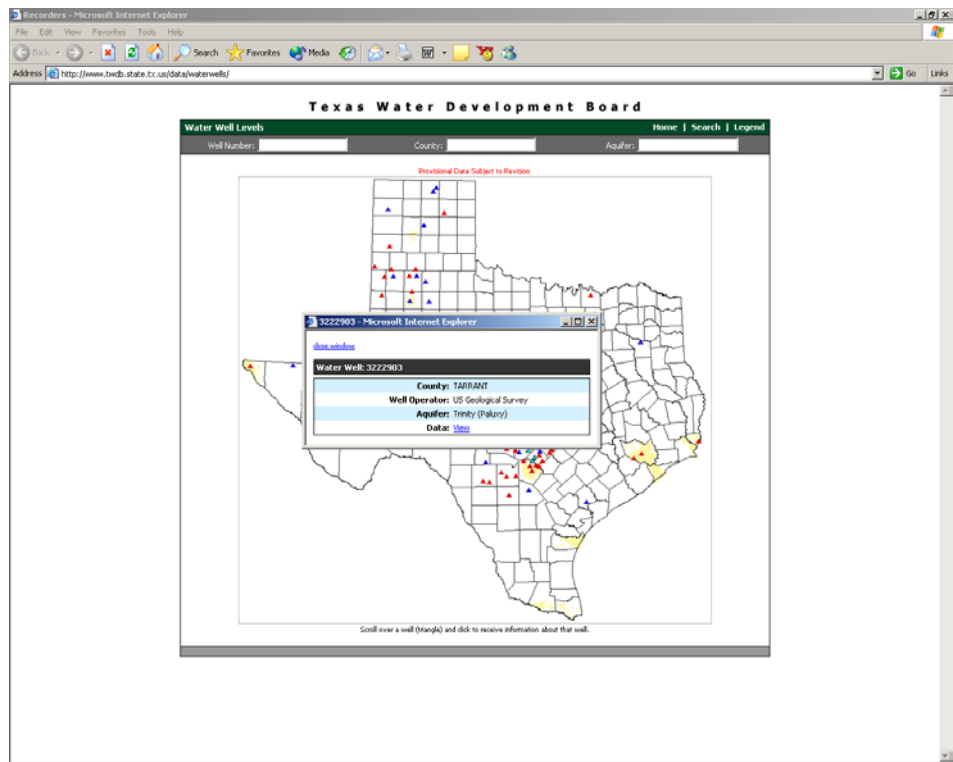
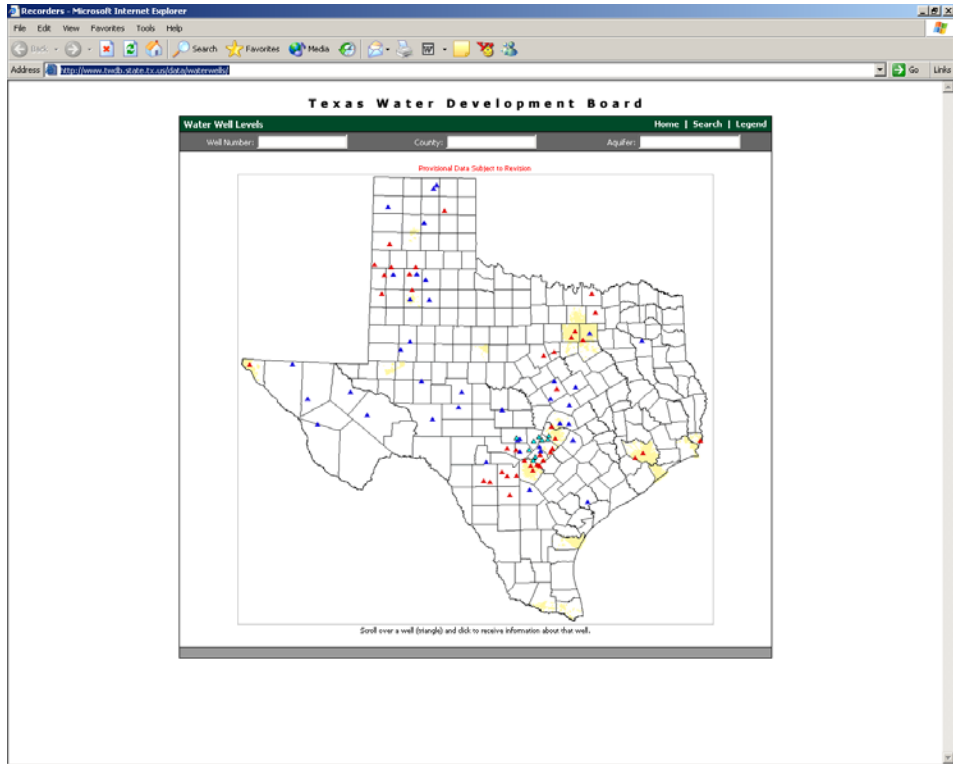
**ArcIMS Capable:** No

**IMS Data Served:** N/A

**Online Databases:** TWDB well level information

**Metadata:** N/A

**Other:**





**Name:** USGS (United States Geological Survey)  
**Location:** USGS  
**Purpose:** Serves as a national clearinghouse for water flow data  
**URL:** <http://water.usgs.gov/waterwatch/>

### **General Structure**

Layout: Simple

Search Capabilities: No text searches for data

Languages Used: HTML and JAVA

Data Types: HTML tables and graphs

Data Sets: Stream flow data including real- time, daily, 7-day and below normal.

Viewing Method: Image maps

Download Method: N/A

Download Format: Tab delimited text files

Database Type: Warehouse

ArcIMS Capable: No

IMS Data Served: N/A

Online Databases: Stream flow data is linked

Metadata: N/A

Other:

