

ARTICLE

Received 21 Jun 2016 | Accepted 22 Mar 2017 | Published 22 May 2017

DOI: 10.1038/ncomms15362

OPEN

# Thermogenetic neurostimulation with single-cell resolution

Yulia G. Ermakova<sup>1,2</sup>, Aleksandr A. Lanin<sup>3,4,5,6</sup>, Ilya V. Fedotov<sup>3,5,6,7</sup>, Matvey Roshchin<sup>8</sup>, Ilya V. Kelmanson<sup>1</sup>, Dmitry Kulik<sup>3,†</sup>, Yulia A. Bogdanova<sup>1</sup>, Arina G. Shokhina<sup>1</sup>, Dmitry S. Bilan<sup>1,2</sup>, Dmitry B. Staroverov<sup>1</sup>, Pavel M. Balaban<sup>8</sup>, Andrei B. Fedotov<sup>3,4,5,6</sup>, Dmitry A. Sidorov-Biryukov<sup>3,5,6</sup>, Evgeny S. Nikitin<sup>8</sup>, Aleksei M. Zheltikov<sup>3,4,5,6,7</sup> & Vsevolod V. Belousov<sup>1,2,9</sup>

Thermogenetics is a promising innovative neurostimulation technique, which enables robust activation of neurons using thermosensitive transient receptor potential (TRP) cation channels. Broader application of this approach in neuroscience is, however, hindered by a limited variety of suitable ion channels, and by low spatial and temporal resolution of neuronal activation when TRP channels are activated by ambient temperature variations or chemical agonists. Here, we demonstrate rapid, robust and reproducible repeated activation of snake TRPA1 channels heterologously expressed in non-neuronal cells, mouse neurons and zebrafish neurons *in vivo* by infrared (IR) laser radiation. A fibre-optic probe that integrates a nitrogen – vacancy (NV) diamond quantum sensor with optical and microwave waveguide delivery enables thermometry with single-cell resolution, allowing neurons to be activated by exceptionally mild heating, thus preventing the damaging effects of excessive heat. The neuronal responses to the activation by IR laser radiation are fully characterized using  $\text{Ca}^{2+}$  imaging and electrophysiology, providing, for the first time, a complete framework for a thermogenetic manipulation of individual neurons using IR light.

<sup>1</sup>Shemyakin-Ovchinnikov Institute of Bioorganic Chemistry, Russian Academy of Sciences, Moscow 117997, Russia. <sup>2</sup>Pirogov Russian National Research Medical University, Moscow 117997, Russia. <sup>3</sup>Physics Department, International Laser Center, M.V. Lomonosov Moscow State University, Moscow 119992, Russia. <sup>4</sup>Department of Physics and Astronomy, Texas A&M University, College Station, Texas 77843, USA. <sup>5</sup>Russian Quantum Center, ul. Novaya 100, Skolkovo, Moscow Region 143025, Russia. <sup>6</sup>Kazan Quantum Center, A.N. Tupolev Kazan National Research Technical University, 420126 Kazan, Russia. <sup>7</sup>Kurchatov Institute National Research Center, Moscow 123182, Russia. <sup>8</sup>Institute of Higher Nervous Activity and Neurophysiology, Moscow 117485, Russia. <sup>9</sup>Institute for Cardiovascular Physiology, Georg August University Göttingen, D-37075 Göttingen, Germany. † Present address: Zaporizhzhya State Engineering Academy, 69006 Zaporizhzhya, Ukraine. Correspondence and requests for materials should be addressed to A.M.Z. (email: zheltikov@physics.msu.ru) or to V.V.B. (email: vsevolod.belousov@gmail.com).

Optogenetic methods allow specific neuronal subsets to be operated by light with high precision in space and time, and are important tools helping to understand the mechanisms of functioning of the brain and peripheral neural system<sup>1,2</sup>. Genetic targeting enables spatial resolution by restricting expression of light-activated ion channels to genetically defined subpopulations of neurons. Programmable light patterns can further improve the spatial resolution and add temporal control to the optogenetic toolbox<sup>3</sup>. Optogenetic tools allow both activation and silencing of neurons by means of activation of depolarizing cationic channels or hyperpolarizing anionic pumps, respectively<sup>1,2,4</sup>. The broad range of model organisms suitable for optogenetics and continuously upgraded light-gated channels make this toolbox more and more popular and affordable<sup>5</sup>.

While enabling revolutionary new experiments for dissecting neuronal circuits and modulating animal behaviour, optogenetics is not free from serious limitations and difficulties. First, the ion channels commonly used in optogenetic studies need visible light for activation. Extensive ongoing research aimed at designing red-shifted channelrhodopsins and halorhodopsins is still far from identifying effective ways towards deeper penetration depths for the activation radiation, as visible light is still being used in most of the studies to activate the most popular ChR2 (refs. 6–8). As a consequence, stimulation of neurons in optically non-transparent animals, such as mice, is often invasive, involving implantation of optical fibres. As a serious side effect, the activating light acts on intrinsic visual receptors of the animals<sup>9</sup>, which may cause partial blindness and unwanted brain circuit activation. Moreover, despite recent progress in making channelrhodopsins with high single-channel conductance<sup>10</sup>, the low conductance of most ChRs (40–60 fS for ChR2)<sup>11</sup> necessitates high channel expression levels and high activation light intensities, which are very likely to induce rarely considered harmful phototoxic effects.

Thermogenetics offers a promising alternative approach, based on heat-activated cation channels from the transient receptor potential (TRP) family<sup>12</sup>. The TRP channels are three orders of magnitude more conductive than ChR (ref. 13) and can be activated by heat induced with infrared (IR) light<sup>14</sup> or magnetic particles in a strong magnetic field<sup>15</sup>. Thermogenetic approaches have been already successfully demonstrated in studies on ectotherms, such as *Drosophila* and zebrafish, as well as endotherms, such as mice<sup>16</sup>. With all this success, thermogenetics, as a new technology for neuroscience, is still in its infancy. Indeed, most of the thermogenetic experiments with *Drosophila* neural circuits used air temperature changes to activate the TRP channels<sup>17–20</sup>. In recent experiments with zebrafish *Danio rerio*, chemical agonists of TRP channels were used for *in vivo* neuron activation<sup>21</sup>. However, the agonist washout needed for this approach severely limits the speed of sequential activation. As a helpful alternative, IR laser radiation has been shown to enable activation of neurons in flies with relatively high spatial and temporal precision<sup>14,22</sup>. For demonstration purposes, these experiments were performed on *Drosophila* native fly thermoreceptors, dTRPA1. However, the TRP channels are complex and subject to many post-translation modifications and protein–protein interactions, which can modify channel activity<sup>23</sup>. As many of the post-translation modification sites and interactions are species-specific, the use of recombinant channels from evolutionary distant species would significantly lower the risk of unwanted channel modulation and increase the resolution of activation patterns. The improvement of the thermogenetic toolbox should therefore start with a systematic search and characterization of suitable IR-sensitive channels that would enable robust activation of neurons with minimal risk of unwanted interactions with the cellular and tissue

environment. An equally important task is to develop efficient photonic activation approaches that would overcome the limitations of chemical agonists or ambient temperature changes as thermogenetic stimuli. This task is not limited to identifying most suitable heating sources, but includes the development of appropriate tools for a high-precision local thermometry that would help to finely adjust the incoming heat flow.

In the present study, we use TRPA1 channels from snakes as a thermogenetic stimulator. Many snake species use a special heat-sensitive organ, called a ‘pit’, to distantly localize a prey. The pit organ is innervated with receptor neurons expressing the TRPA1 channels, which serve as molecular heat sensors<sup>24</sup>. In this work, the snake TRPA1 channels are used for thermogenetic activation of mouse neurons and induction of zebrafish larvae behavioural response. Neurons expressing rattlesnake TRPA1 were activated in our experiments using IR-laser-controlled heating with a fibre-optic probe integrated with a quantum sensor used for *in situ* high-resolution thermometry, thus enabling an exceptionally mild, precisely controlled heating of the tissue. With this combination of methods, we carried out a systematic, in-depth characterization of the performance of TRPA1 channels in neurons, including accurate measurements of the pertinent Ca<sup>2+</sup> dynamics and electrophysiological analysis of the responses. Our study demonstrates that the snake TRPA channels are ideally suited as a tool for thermogenetics, providing a carefully validated kit of molecular and optical instruments as a route toward mature thermogenetic technologies for neuroscience.

## Results

**Visualization of TRPA1 activation.** Visualization of optogenetic actuators inside living cells allows estimation of their expression level, as well as their distribution among and within cells. The most obvious way towards this goal is to fuse an ion channel with a fluorescent protein (FP). This strategy was successfully implemented for the majority of light-gated channels, such as ChR variants<sup>5,25</sup>, helping to monitor both localization and the expression level of the channel. However, linking an FP to either amino- or carboxy-termini could negatively affect channel function. Another option is to leave the channel intact, but to add an FP as an expression marker using either an IRES sequence<sup>26,27</sup> or a co-transcriptional self-cleavage P2A linker<sup>28</sup>. This strategy ensures that the channel is intact and operates in the native mode. Moreover, a P2A sequence allows the expression level to be estimated. However, the location of the channel cannot be determined without specific antibodies. Finally, inserting an epitope, such as a His-tag, into the surface loop of the protein makes it possible to visualize the channel through immunostaining<sup>15,16</sup>.

To find an optimal labelling strategy for the snake TRPA1 channels, we tested the above-mentioned procedures (Supplementary Note 1, Fig. 1a, Supplementary Figs 1–5). We generated two expression vectors: one encoding EGFP (refs 29,30) downstream to the *Crotalus atrox* TRPA1 (caTRPA1, ref. 24) under the control of an IRES element (caTRPA1-IRES-EGFP) and the other encoding caTRPA1 fused in frame to red FP tdTomato<sup>31</sup> via a linker containing a P2A cleavage site (caTRPA1-P2A-tdTomato) (Supplementary Fig. 1). A feature of the IRES element is that the expression of the second open reading frame (ORF) is about tenfold less intense than that of the first ORF upstream of the IRES. However, the ion channel amino-acid sequence remains completely intact. The caTRPA1-P2A-tdTomato ensures the most reliable information about the expression levels of both caTRPA1 and FP because they both are synthesized as a single polypeptide chain with subsequent cleavage.

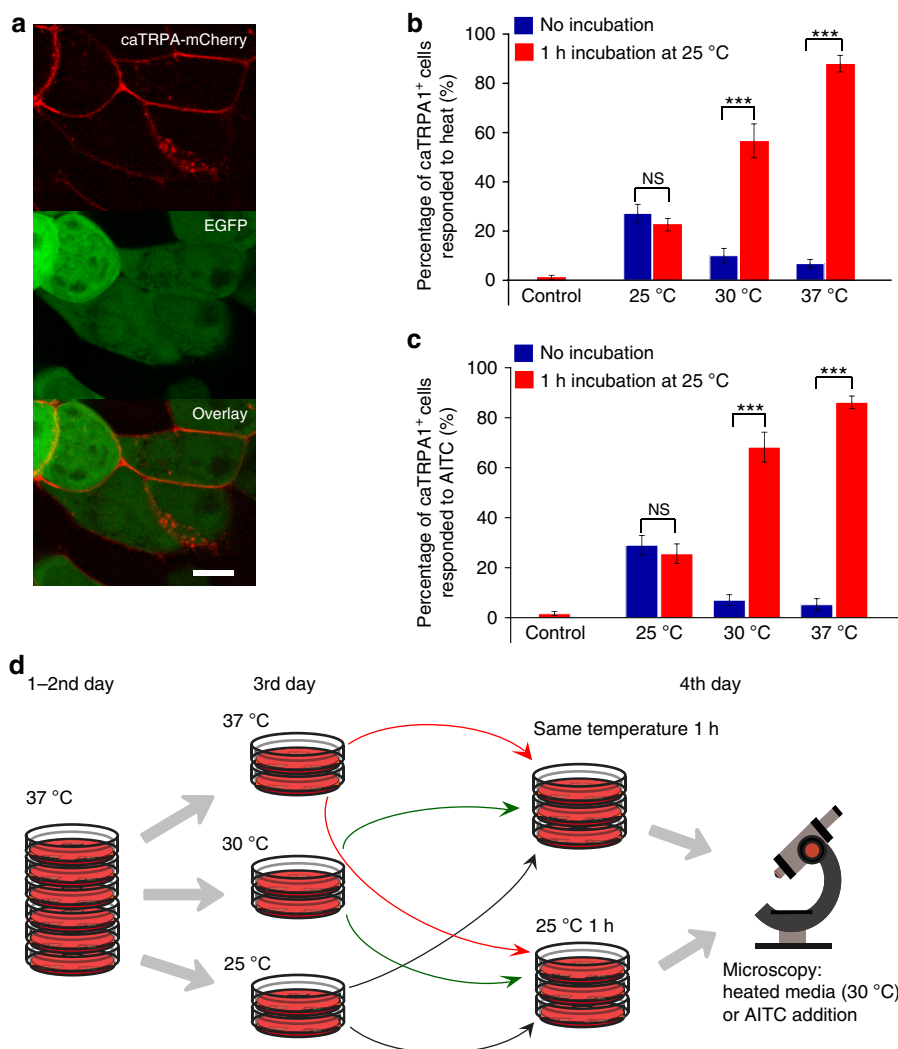
Multiple fusion constructs of caTRPA1 with FPs gave us important information about the subcellular localization of the channels (Fig. 1a, Supplementary Note 1, Supplementary Figs 2–4) that appeared to be predominantly plasma membrane. However, the non-fused channels demonstrated much better functional performance (Supplementary Note 1, Supplementary Fig. 5). Therefore we decided for using intact channels in further experiments.

Similar results were obtained for another snake channel, *Elaphe obsoleta lindheimeri* TRPA1 (eolTRPA1) (ref. 24) (Supplementary Fig. 2c, Supplementary Fig. 4c).

**Expression of caTRPA1 in mammalian cells.** Mammalian cultured cell lines and primary neurons could be the most suitable systems to study the key parameters of snake TRPA1 channel activity. However, the activation threshold of the known snake TRPA1 channels is either lower than  $T_{ON} \approx 27.6 \pm 0.9^\circ\text{C}$  (for caTRPA1) (ref. 24) or equal to  $T_{ON} \approx 37.2 \pm 0.7^\circ\text{C}$

(for eolTRPA1) (ref. 24), the temperature of the cells maintained in a  $\text{CO}_2$  incubator. Therefore, we expected some toxicity associated with  $\text{Ca}^{2+}$  entry via the TRPA1 at constantly elevated temperatures. We compared the heat- and agonist-induced  $\text{Ca}^{2+}$  responses in caTRPA1-expressing HEK293 cells cultured at different temperatures, viz., 25, 30 and  $37^\circ\text{C}$ . Cell growth at  $25^\circ\text{C}$  led to a four- to tenfold decrease in the transfection efficiency and lower expression levels of TRPA1, R-GECO1.1 (ref. 32), and GCaMP6s (ref. 33). This decreased the stimulation efficiency (Fig. 1b,c) and the amplitude of the  $\text{Ca}^{2+}$  signal.

Surprisingly, cell cultivation at 30 or  $37^\circ\text{C}$  does not lead to permanent activation of the caTRPA1. After transfer of the cells expressing caTRPA1 from high temperature to the microscope stage at the room temperature (RT), temperature conditioning at  $25^\circ\text{C}$  within an hour is needed to make the cells respond to either heating to  $30^\circ\text{C}$  or TRPA1 agonist allyl isothiocyanate (AITC) (Fig. 1b,c). Similar effects were observed for eolTRPA1



**Figure 1 | HEK293 cells expressing caTRPA1 grown at different temperatures respond to a rapid rise of the temperature or agonist AITC.** (a) Localization of caTRPA1-mCherry. Scale bar, 10  $\mu\text{m}$ . (b) HEK293 cells were co-transfected with caTRPA1-IRES2-EGFP and  $\text{Ca}^{2+}$  sensor R-GECO1.1. After 36–48 h, cells were transferred to another incubator for temperature conditioning at 25, 30 or  $37^\circ\text{C}$  for 18–26 h. Next, half of the cells were kept for additional 1 h at the same temperature and another half of the cells were kept at  $25^\circ\text{C}$ . Then all cells were transferred to the stage of the microscope preheated to  $25^\circ\text{C}$  and activated by the addition of warm medium under control of electrode thermometer. Final temperature was  $30 \pm 1^\circ\text{C}$ . Control cells express only R-GECO1.1 indicator. (c) Response of cells to 200  $\mu\text{M}$  AITC. For each experimental condition in (b) and (c), 50 or more cells were analysed in six experiments. ns—not significant.  $***P < 0.001$ , paired  $t$ -test (two-tailed) for two-group comparisons. The error bars represent the s.e.m. (d) Scheme of the experimental workflow.

conditioned below the threshold at 30 °C (Supplementary Fig. 6) and heated to 38 °C. This indicates that either the channels have a mechanism for self-protection against remaining in a constantly open state or the final channel folding stage requires subthreshold temperatures. This feature makes mammalian cell systems suitable for studying snake TRPA1 activation properties.

**Determination of caTRPA1 temperature threshold.** Thermogenetic channels are activated with heat. IR laser radiation offers a robust and flexible method to induce heat in a well-controlled, precisely localized fashion, with switching between ON and OFF states of a thermosensitive channel performed at much higher speed than with any of the available techniques used for ambient temperature variations. Laser-induced heating can be accurately controlled by finely adjusting laser radiation intensity. This advantage of laser heating is of crucial importance for *in vivo* studies as living organisms widely differ in ranges of tolerable temperature variations, graded from the normal through elevated to the toxic level. Moreover, the method of heat delivery may affect the channel threshold temperature<sup>17,24,34</sup>.

The wavelength of laser radiation  $\lambda$  is one of the key parameters controlling laser-induced heating of a cell and the surrounding tissue. To provide efficient absorption of laser radiation by surrounding tissues and to simultaneously minimize phototoxic effects that may be caused by direct absorption of laser light by molecules within the targeted living cells, we chose to work at a wavelength of 1,440 nm, which hits the local maximum of water absorption within the 200–1,900-nm range<sup>35</sup>. The absorption coefficient at this wavelength estimated as  $\mu_a \approx 32 \text{ cm}^{-1}$ . Importantly, this wavelength falls within the transparency window of glass and quartz components of most optical systems, allowing the light coming from a laser source to be manipulated in a flexible and reliable fashion.

Our laser-based system combining IR excitation with fluorescent microscopy and high-resolution quantum thermometry of activated cells is sketched in Fig. 2a. In this experimental scheme, the frequency-tunable output of the Ti:sapphire-laser-pumped femtosecond optical parametric oscillator (OPO) is loosely focused with a long-focal-length lens into a spot 670  $\mu\text{m}$  in diameter, providing a uniform irradiation of a large number of TRPA-expressing cells within the sample. The transverse profile of the laser beam measured within the sample plane is shown in Fig. 2b. For highest efficiency of laser heating, the central wavelength of the OPO output is tuned to the local maximum of water absorption at around 1,440 nm. Ultrashort ( $\approx 100$  fs) IR pulses were used for laser irradiation<sup>36,37</sup>. Continuous-wave laser sources delivering 5-mW radiation at 473 and 532 nm were employed for multicolour fluorescent imaging using R-GECO1.1, EGFP, GCaMP6s and tdTomato as fluorescent biomarkers.

A fibre-optic probe with a 300- $\mu\text{m}$ -diameter nitrogen – vacancy (NV) diamond crystal attached to the tip of the fibre (Fig. 2a) adds a unique modality to our experiments, enabling accurate *in situ* temperature measurements with single-cell resolution<sup>38–40</sup> by means of ODMR (see the Methods section for a detailed description of fibre-based thermometry implemented as a part of our experimental approach). In Fig. 2d, we present the difference  $\Delta T = T - T_0$  between the temperatures  $T$  and  $T_0$  measured with and without laser irradiation of the sample as a function of the laser wavelength  $\lambda$ . The  $\Delta T(\lambda)$  dependence (the solid line in Fig. 2d) strongly correlates with the spectrum of water absorption (the dashed line in Fig. 2d), showing that absorption of IR light by water dominates laser-induced heating in our experiments, with the heating rate per unit laser power within the studied range of laser intensities estimated as  $0.25 \pm 0.01 \text{ K mW}^{-1}$  for  $\lambda \approx 1,440$  nm

(Fig. 2e). The transverse profile of the laser-induced heating  $\Delta T$  resolved by scanning the fibre-optic sensor across the laser beam confirms that the radial distribution of  $\Delta T$  within the laser beam corresponds to the radial field intensity profile, with the maximum of laser excitation strongly confined to the centre of the laser-irradiated area.

The laser imaging system with *in situ* fibre-optic thermometry provides all the necessary functionality to analyse the response of TRPA1-expressing cells to 1,440-nm laser radiation and to define the activation thresholds of caTRPA1 and eoTRPA1. HEK293 cells co-expressing caTRPA1-IRES-EGFP and R-GECO1.1 were kept overnight at 26 °C and subjected to irradiation with femtosecond IR laser pulses, delivered by the OPO operating in the quasi-continuous-wave (quasi-cw) mode with the 78-MHz pulse repetition rate. Rapid temperature rise from subthreshold temperatures to 30.5 °C led to channel opening and build-up of elevated concentrations of  $\text{Ca}^{2+}$  in the cytoplasm. When the laser beam was blocked, R-GECO1.1 fluorescence gradually faded away (Fig. 3a), indicating channel closure and  $\text{Ca}^{2+}$  pumping out from the cytoplasm.

Next, we defined the temperature thresholds for caTRPA1 and eoTRPA1 by adjusting the IR laser irradiation in such a way as to increase the temperature in a stepwise manner, as shown in Fig. 3b,c. The activation thresholds were found to be  $T_{\text{ON}} \approx 27.8 \pm 0.6$  °C and  $38.5 \pm 0.7$  °C for caTRPA1 and eoTRPA1, respectively. Control cells expressing only  $\text{Ca}^{2+}$  indicator did not respond to the IR irradiation (Fig. 3d), showing that ultrashort IR laser pulses can efficiently activate snake TRPA1 channels without exerting any detectable influence on normal, non-TRPA1-expressing cells in thermogenetics experiments.

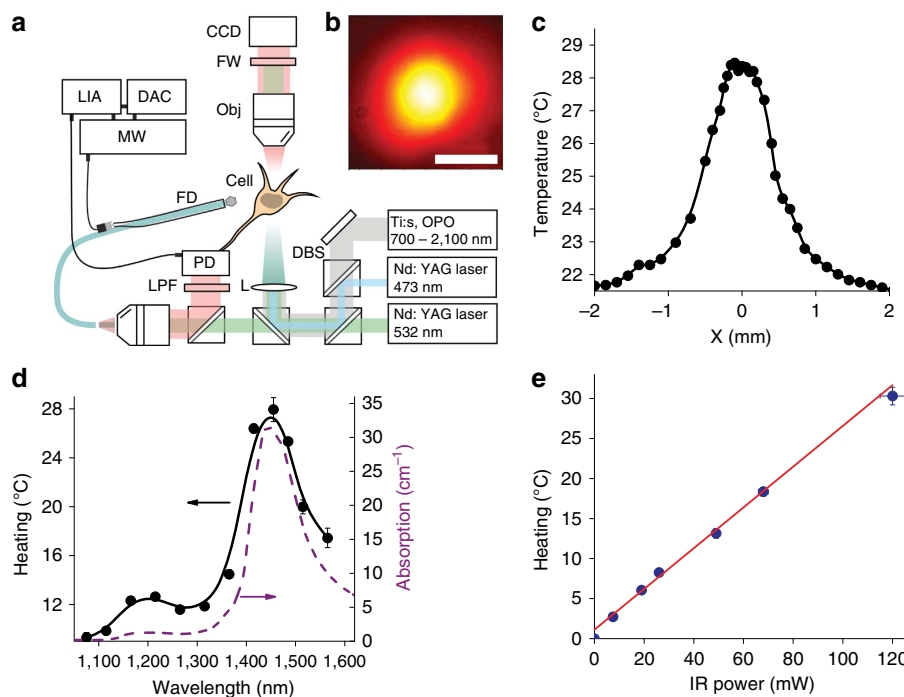
Alternatively, we determined the temperature thresholds as the point of intersection between linear fits to baseline and the steepest component of the Arrhenius profile<sup>24</sup> (Supplementary Fig. 7a,b). The values obtained were  $27.4 \pm 0.4$  and  $37.9 \pm 0.8$  °C for caTRPA1 and eoTRPA1, respectively.

Repeated heating elevated the level of  $\text{Ca}^{2+}$  again, with the entire cycle fully reproduced each time the laser beam was turned on and then off again (Fig. 3e,f, Supplementary Fig. 7c), indicating full functionality of caTRPA1 in the plasma membrane of mammalian cells.

Our experiments also showed that  $\text{Ca}^{2+}$  dynamics in the cytoplasm can be efficiently tailored towards the desired shape by an appropriate modulation of the laser-driven heat release. Faster heating was observed to induce faster and more significant build-up of  $\text{Ca}^{2+}$  elevation, while heating just above activation thresholds led to slower build-up of  $\text{Ca}^{2+}$ . With various modulation patterns applied to the intensity of ultrashort laser pulses as a function of time, we were able to tailor the traces of the  $\text{Ca}^{2+}$  response from the cells to various waveforms (Supplementary Fig. 7d). As a limiting factor, slow ( $0.5\text{--}1$  °C  $\text{min}^{-1}$ ) heating of the cells from subthreshold to above-threshold temperatures did not lead to TRPA1 activation. The nature of such behaviour of channels is still to be understood.

### Activation of mammalian neurons using the snake TRPA1.

Several studies demonstrate the possibility of temperature-operated neuronal and muscle activity<sup>41–47</sup>. However, whether non-mammalian TRPA channels can be used for mammalian neuron activation remained unclear. Moreover, whereas numerous reports describe electrophysiological properties of neurons during optogenetic activation, all studies using thermogenetic activation demonstrate mostly *in vivo* behavioural outcomes without any measure of the neuronal response properties. Most of the previous studies with rare exceptions<sup>14</sup> did not use the IR photonics for stimulation, but rather relied on ambient temperature changes or



**Figure 2 | Local heating and quantum thermometry of living cells.** (a) Laser thermogenetics and fluorescent imaging of single cells: Ti:s, mode-locked Ti:sapphire laser; OPO, femtosecond optical parametric oscillator; Obj, microscope objective; FW, filter wheels; DBS, dichroic beam-splitting cube; LPF, long-pass filter; FD, fibre probe with a NV-diamond quantum temperature sensor; MW, microwave source; LIA, lock-in amplifier; DAC, data acquisition circuit; CCD, CCD camera. (b) Transverse profile of the IR laser beam. The scale bar, 500 μm. (c) Spatial profile of temperature distribution upon 36 mW 1,440 nm laser irradiation measured using diamond positioned on the tip of the optical fibre (details in the Methods section). Basal temperature is 19.5 °C. (d) Absorption spectrum of water (dashed line) versus the temperature change  $\Delta T = T - T_0$  induced in the sample by 104-mW laser radiation measured as a function of the laser wavelength  $\lambda$  (solid line), where  $T$  and  $T_0$  are the temperatures of the sample with and without laser radiation. (e) The temperature change  $\Delta T$  measured as a function of the IR laser power with  $\lambda = 1,440$  nm.

chemical agonists. To close these gaps in the existing knowledge, we analysed  $\text{Ca}^{2+}$  dynamics and electrophysiological properties of the thermogenetic neuronal response.

Expression of TRPA1-IRES-EGFP in neurons resulted in a very weak and cell-variable EGFP fluorescence signal. In contrast, TRPA1-P2A-tdTomato demonstrated strong fluorescence in neurons. We therefore used co-transfection of TRPA1-P2A-tdTomato with GCaMP6s to visualize  $\text{Ca}^{2+}$  dynamics in neurons upon TRPA1 activation (Fig. 4).

In our experiments with IR laser radiation, the diameter of the laser beam ( $\approx 60 \mu\text{m}$ ) was comparable to the size of a single neuron, thus enabling activation of individual neurons without affecting the neighbouring cells (Fig. 4a,e,f). Further heating leads to activation of the neighbouring neuron (Fig. 4e,f). Similar to agonist stimulation, the IR stimulation of caTRPA1-expressing neurons induced high-amplitude  $\text{Ca}^{2+}$  transients (Fig. 4b,c). The amplitude of the  $\text{Ca}^{2+}$  signal from eolTRPA1 was lower than that of caTRPA1 in both IR stimulation and AITC stimulation. Control cells transfected with tdTomato and GCaMP6s responded to neither IR nor AITC (Fig. 4b).

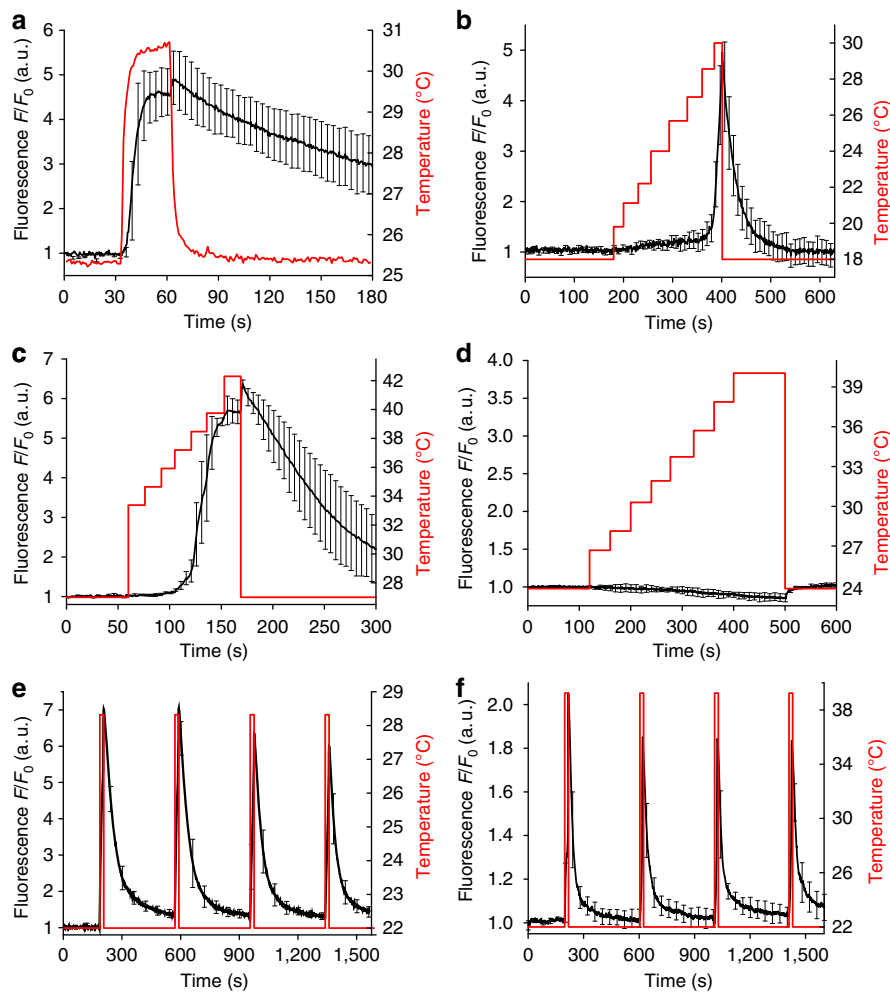
A persistent  $\text{Ca}^{2+}$  signal observed within the entire period of photostimulation (Fig. 4c) indicates that a certain fraction of thermosensitive channels remain open all this time, allowing the dynamics of  $\text{Ca}^{2+}$  in the cytoplasm to be efficiently controlled with proper timing of thermogenetic stimuli. While the extensive literature<sup>41,43–47</sup> suggests that, with sufficiently high laser intensities, laser activation of neurons is possible without heterologous heat-sensitive channels, our experiments with control neurons that do not express heterologous TRPA1 clearly show that, when the laser power is kept at a moderate level (below 90 mW for the 1,440-nm quasi-cw output of the

femtosecond OPO in our experiments), giving rise to well-controlled (and accurately monitored with fibre-optic sensors) heating within the range of temperatures from 25 to 40 °C, the IR-laser stimulation-evoked  $\text{Ca}^{2+}$  build-up can be completely avoided (Supplementary Fig. 8).

It should also be noted that the TRPA1 temperature activation threshold in neurons may differ from the activation threshold of these channels in non-excitable HEK293 cells. Our direct measurements show (Fig. 4c,e,f) that the activation threshold of caTRPA1 in neurons is  $T_{\text{ON}} \approx 28.5 \pm 1$  °C. Since the basal temperature of zebrafish maintenance in fish facilities is generally maintained between 26 and 28.5 °C (refs 48–50), these measurements prove that TRPA1 channels offer a powerful tool to study *D. rerio* neurophysiology.

**Activation of neurons using pulsed IR laser radiation.** When operated in the pulsed mode, the IR laser sources of ultrashort pulses provide additional benefits for carefully controlled neuron photoactivation, enabling a fine adjustment of irradiation powers, doses, times and pulse repetition rates, as well as helping to reduce the phototoxic effects of laser radiation. In our experiments, pulsed irradiation of samples was performed by using a chopped OPO output, delivering trains of femtosecond IR pulses with a tunable pulse-train duration  $\tau_t$  and pulse-train repetition rate  $f_t$ . When applied to the caTRPA1-expressing neurons, such IR pulse trains were found to induce  $\text{Ca}^{2+}$  transients at their repetition rate  $f_t$  (Fig. 4g,h). No fluorescent response was observed from the control neurons.

Fast response is one of the key criteria defining whether or not an ion channel can be used for opto- or thermogenetic manipulation of neurons. Tunable trains of femtosecond pulses



**Figure 3 | Activation of snake TRPA1 in cells expressing TRPA1-IRES-EGFP using femtosecond IR laser pulses.** (a) R-GECO1.1 fluorescence (black line) reflects  $\text{Ca}^{2+}$  dynamics in the cytoplasm with the 20 mW laser beam turned on at  $t \approx 30$  s and off at  $t \approx 60$  s. (b,c) With the temperature of HEK293 cells expressing snake TRPA1 increased in a stepwise fashion using properly adjusted IR laser radiation, the activation thresholds of caTRPA1 (b) and eolTRPA1 (c) were determined. (d) A similar heating of control cells does not induce  $\text{Ca}^{2+}$  elevation. (e) Repeated caTRPA1 activation cycles using 27 mW laser. (f) Repeated eolTRPA1 activation cycles using 68 mW laser. The fluorescence signal is averaged over 11 (a), 5 (b-d), 30 (e) and 17 (f) cells. The black line is the fluorescence response. The red line is the temperature in the medium. The error bars represent the s.e.m.

provided by wavelength-tunable OPOs are ideally suited for time-resolved studies of caTRPA1 opening in neurons. In our experiments, isolated 10-ms trains of 1,440-nm femtosecond laser pulses were used to activate the caTRPA1-expressing neurons. The build-up and decay of  $\text{Ca}^{2+}$  elevation in the cytoplasm was then studied (Fig. 4i) by means of fluorescence imaging. The typical activation time for this system was estimated as  $\sim 10$  ms. Fluorescence decay was found to be exponential,  $F/F_0 \sim \exp(-t/\tau_d)$ , with  $\tau_d \approx 3.5 \pm 0.1$  s (green line in Fig. 4i). This exponential decay is most likely to be related to a dissociation of  $\text{Ca}^{2+}$  in GCaMP6s, rather than the dynamics of TRPA1 closing.

The caTRPA1 channels thus open on the millisecond timescale, which is comparable with typical response times of light-sensitive channels used in optogenetics, such as channelrhodopsins. Although these experiments strongly suggest that  $\text{Ca}^{2+}$  biosensors could be very useful as instruments for visualizing the activity of neurons in response to thermogenetic stimulation, association and dissociation of  $\text{Ca}^{2+}$  in the probe could be a potential source of errors in  $\text{Ca}^{2+}$ -imaging-based assessment of channel dynamics. This issue was addressed through direct studies of channel dynamics by means of electrophysiological analysis of the snake TRPA1-expressing neurons.

### Electrophysiology and imaging of cultured mammalian neurons.

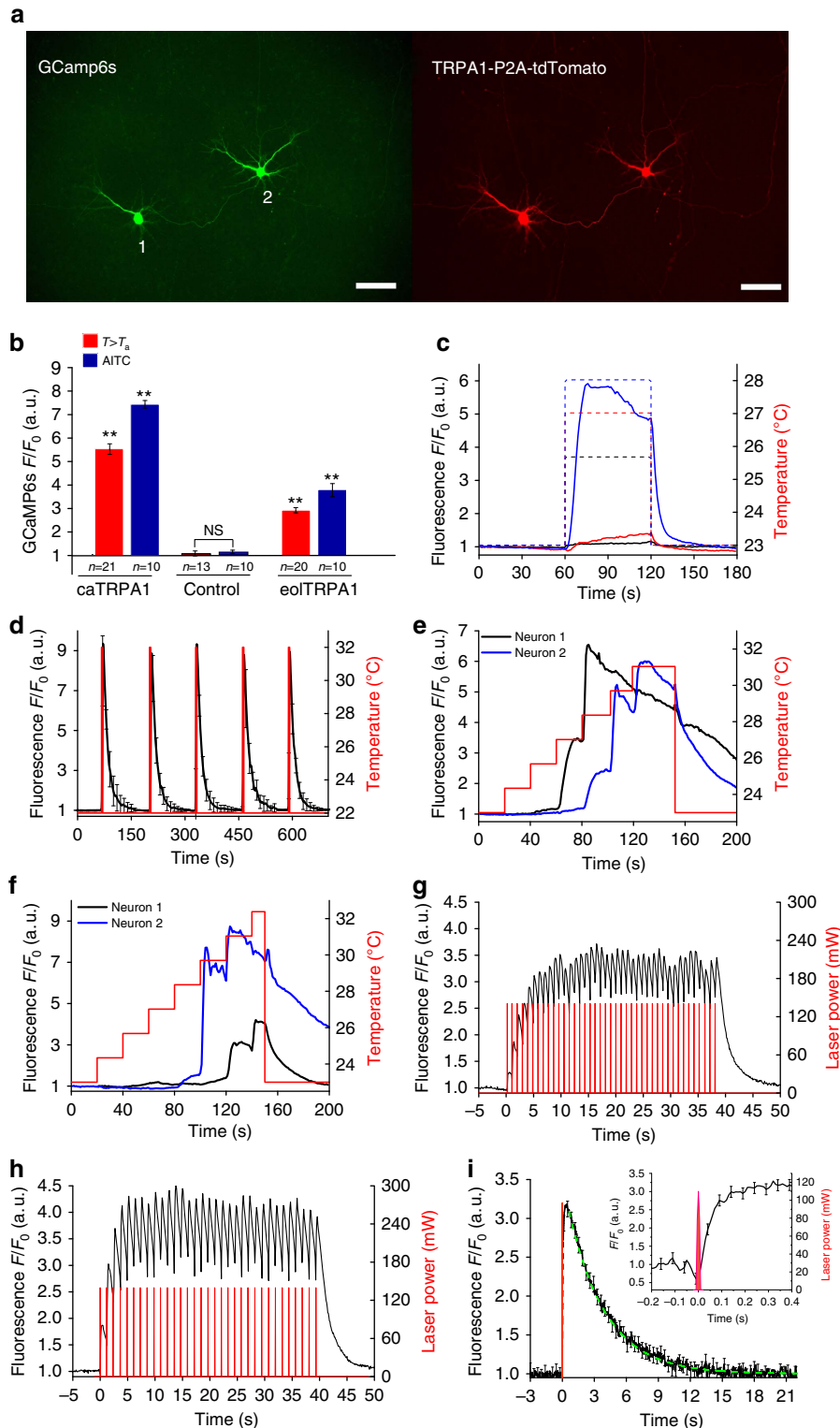
To test the ability of the caTRPA1 and eolTRPA1 channels to evoke action potentials, we recorded the response of cultured hippocampal/neocortical neurons transfected with caTRPA1-P2A-tdTomato to isolated millisecond pulses of IR radiation applied to the soma of neurons, as well as to the proximal parts of axons and dendrites (Fig. 5, Supplementary Fig. 9). Laser pulses with a central wavelength of 1,050 or 1,342 nm were produced by chopping the cw output of an ytterbium fibre laser or by a diode-pumped solid-state laser. IR radiation was delivered to the targeted areas within the neurons under study through an optical fibre with a core diameter of 50  $\mu\text{m}$  and a numerical aperture of 0.22.

Laser pulses of 10 ms duration and energy  $E$  at a wavelength of 1,342 nm were found to evoke single action potentials (APs) in both caTRPA1-expressing neurons ( $E \approx 1.0$  mJ,  $n = 5$ , Fig. 5a, top trace) and eolTRPA1-expressing ( $E \approx 1.7$  mJ,  $n = 5$ ; Fig. 5b, top trace) neurons kept at basal temperatures of 27  $^{\circ}\text{C}$  and 35.5  $^{\circ}\text{C}$ , respectively. Similar responses have been obtained using 30-ms pulses of the ytterbium fibre laser at 1,050 nm that induced at least one action potential in each of the recorded caTRPA1+ ( $E \approx 27$  mJ,  $n = 5$ ; Supplementary Fig. 10b, middle trace) and

eoTRPA1+ cells ( $E \approx 45$  mJ,  $n=5$ ; Supplementary Fig. 10f, middle trace), evoking no action potential in the control caTRPA- and eoTRPA1- cells ( $n=5$ ) (Supplementary Fig. 10i,j). Longer, 50 ms, pulses normally induced more than one action potentials (Supplementary Fig. 11).

Laser pulses of low energy were found to evoke subthreshold voltage responses in both caTRPA1-expressing ( $E \approx 9$  mJ,  $9.8 \pm 1.3$  mV,  $n=5$ ; Supplementary Fig. 10b, top trace) and eoTRPA1-expressing ( $E \approx 27$  mJ,  $12 \pm 3.4$  mV,  $n=5$ ;

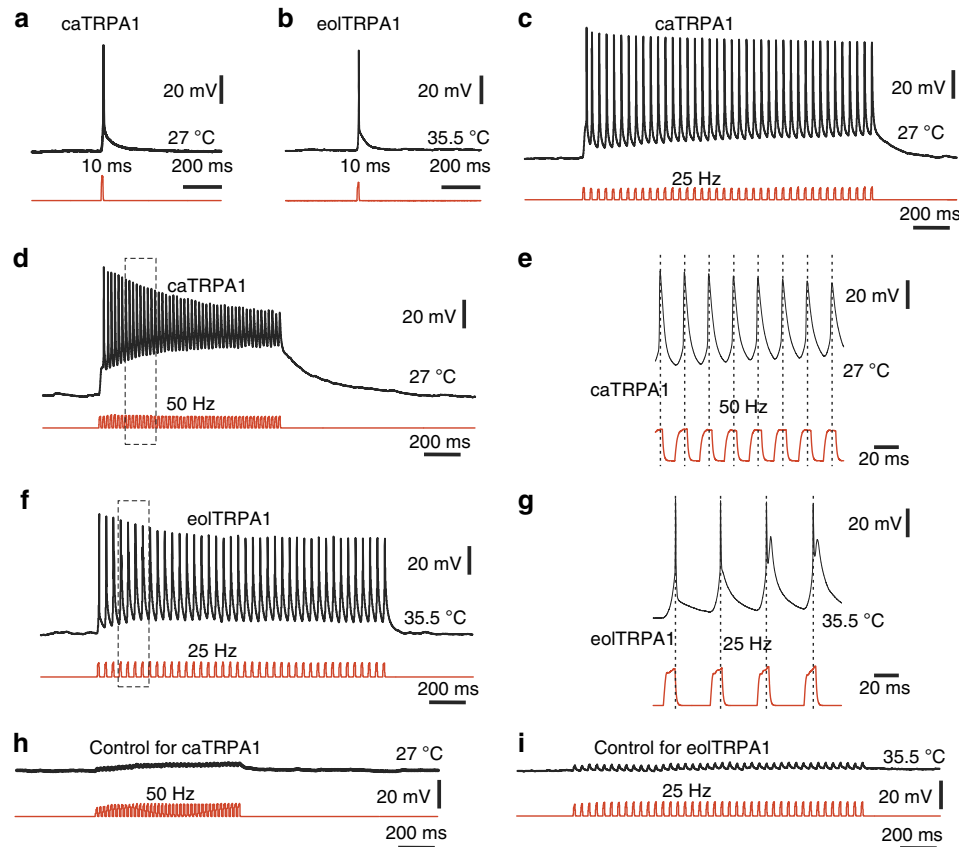
Supplementary Fig. 10f, top trace) neurons kept at basal temperatures of  $27^\circ\text{C}$  and  $35.5^\circ\text{C}$ , respectively. The response induced by laser pulses with  $E \approx 9$  mJ and 27 mJ in the control caTRPA1- and eoTRPA1- (tdTomato alone) neurons, respectively, was much weaker ( $2.4 \pm 0.5$  mV for caTRPA1- neurons,  $n=5$ ; Supplementary Fig. 10b, bottom trace and  $2.5 \pm 0.7$  mV for eoTRPA1- neurons,  $n=5$ ; Supplementary Fig. 10f, bottom trace) than the response of caTRPA1+ and eoTRPA1+ neurons to subthreshold stimulation by laser pulses with the same power.



Pulsed IR stimulation of the neurons held in the voltage-clamp mode at a holding potential of  $-90$  mV gave rise to a transient inward current, which rapidly faded when stimulation was over (Supplementary Fig. 10c). Calibration experiments demonstrated that, with the 30-ms 1,050-nm laser pulses of 9 and 27 mJ applied to the caTRPA1 channels and laser pulses of 27 and 45 mJ applied to the eoTRPA1 channels, the temperature induced by laser heating was above the activation threshold of

caTRPA1 (Supplementary Fig. 9, Supplementary Fig. 10d) and eoTRPA1 channels (Supplementary Fig. 9, Supplementary Fig. 10g).

Remarkably, in experiments where a 25 or 50 Hz trains of 10-ms 1,342-nm pulses with  $E \approx 1$  mJ were used to stimulate caTRPA1-expressing neurons, trains were found to induce a clear phase-locked response (Fig. 5c–e) in action potentials generation. The frequency of thermogenetically-evoked reliable phase-locked



**Figure 5 | Thermogenetic induction of phase-locked responses in mammalian cultured neurons expressing TRPA1-P2A-tdTomato constructs.**

(a) Example of a single AP induced by 10-ms laser pulse with a central wavelength of 1,342 nm (energy  $\sim 1.0$  mJ) in a caTRPA1+ neuron resting at 27 °C. (b) Example of a single AP induced by 10 ms IR stimulation (energy  $\sim 1.7$  mJ) in a eoTRPA1+ neuron resting at 35.5 °C. (c) Example of a phase-locked response of a caTRPA1-positive neuron resting at 27 °C to a train stimulation at a frequency of 25 Hz. Individual pulse 10 ms,  $\sim 1$  mJ. (d) Example of a phase-locked response of a caTRPA1+ neuron resting at 27 °C to a train stimulation at a frequency of 50 Hz. Individual pulse 10 ms,  $\sim 1$  mJ. (e) Expanded inset shown in d. Dotted lines are drawn through the APs. (f) Example of a phase-locked response of eoTRPA1+ neuron resting at 35.5 °C to a train stimulation at a frequency of 25 Hz. Individual pulse 10 ms,  $\sim 1.7$  mJ. (g) Expanded inset shown in f. Dotted lines are drawn through the APs. (h) Control stimulation of a caTRPA1- neuron resting at 27 °C to a train stimulation at a frequency of 50 Hz. Individual pulse 10 ms,  $\sim 4.8$  mJ. (i) Control stimulation of a eoTRPA1- neuron resting at 35.5 °C to a train stimulation at a frequency of 25 Hz. Individual pulse 10 ms,  $\sim 4.8$  mJ.

**Figure 4 | Activation of single cultured neurons expressing caTRPA1.** (a) Fluorescent images of neurons co-expressing GGaMP6s and caTRPA1-P2A-tdTomato. The scale bar, 100  $\mu$ m. (b) Stimulation of the TRPA1-expressing neurons using IR irradiation or chemical agonist AITC gives rise to  $\text{Ca}^{2+}$  transients of comparable amplitudes;  $n$  is the number of cells in the group. For each group, averaging was performed over 3–4 stimulation events for each cell in the group of 10–21 cells. ns—not significant.  $**P < 0.01$ , one-way ANOVA, followed by Bonferroni correction and Duncan *post hoc* test. (c) IR stimulation of neuron 1 from (a) heated to 25.5 (5.6 mW laser power, black line), 27 (9 mW, red) and 28 °C (11.2 mW, blue). Note different amplitudes of the  $\text{Ca}^{2+}$  signal at 27 and 28 °C. (d) Multiple cycles of neuron 1 activation by mild above-threshold heating using 20 mW laser. Pulse duration is 3 s. (e), (f) Determination of the neuronal activation threshold with the power of IR laser radiation, focused on neuron 1 (e) and neuron 2 (f), increased in a stepwise fashion. Localized heating activates only one of two neighbouring cells separated by  $\sim 190$   $\mu$ m. Right Y axes indicate temperature of the neuron 1 (e) and neuron 2 (f). (g–i) Activation of caTRPA1-expressing neurons by trains of femtosecond IR laser pulses with a central wavelength of 1,440 nm. The OPO is operated in the pulsed mode to deliver pulse trains (shown by the red line) with a duration  $\tau_i \approx 8$  ms (g) and 11 ms (h) and repetition rate  $f_i \approx 1.18$  Hz (g) and 0.87 Hz (h). Right Y axis delineates average power of millisecond pulse of many femtosecond pulses. (i)  $\text{Ca}^{2+}$  dynamics in caTRPA1-expressing neurons subjected to a single 15-ms train (shown with pink shading) of femtosecond laser pulses with a central wavelength of 1,440 nm. The fluorescence signal is averaged over four heating cycles. Dynamics of GGaMP6s fluorescence is shown in the inset. The error bars represent the s.e.m.



response is even higher than that evoked electrophysiologically in primary afferent zebrafish neurons<sup>51</sup>. It strongly suggests that the dynamics of caTRPA1 channel fits well the speed requirements of a suitable zebrafish thermogenetic activator. Similar result was obtained with 25 Hz/1.7 mJ train stimulation of eolTRPA1 + neurons (Fig. 5f,g), offering a convincing demonstration of fast activation and post-activation recovery of the snake TRPA1 channel. Notably, even trains of pulses with higher  $E \approx 4.8$  mJ failed to evoke action potentials in control neurons (Fig. 5h,i). Slower (15 Hz) trains of pulses with  $E \approx 27$  mJ at a central wavelength of 1,050 nm also resulted in action potentials locked with pulses to one another (Supplementary Fig. 10e,h).

Electrophysiological measurements performed in parallel with time-resolved studies of  $\text{Ca}^{2+}$  dynamics in caTRPA1 + neurons have shown that subthreshold laser radiation powers evoking no action potential induce no  $\text{Ca}^{2+}$  transients either (Supplementary Fig. 12a). Higher laser powers induce both the action potential and build-up of  $\text{Ca}^{2+}$  Supplementary Fig. 12b). The measured kinetics of  $\text{Ca}^{2+}$  build-up and decay exhibits an additional delay due to the time lag in the response of the  $\text{Ca}^{2+}$  indicator relative to the switching between the channel on and off states.

To summarize, our electrophysiological experiments have convincingly demonstrated that the activation of snake TRPA1 channels with IR laser radiation is ideally suited to stimulate neurons in animal kept at physiological temperatures, just a few degrees below the channel activation threshold. caTRPA1 channel also fits well the dynamics of zebrafish afferent neurons. Note however, that using snake TRPA1 to study cultured rodent neurons should be performed at temperatures somewhat lower than normal animal temperature ( $\leq 27^\circ\text{C}$  for caTRPA1,  $\leq 36^\circ\text{C}$  for eolTRPA1) that might affect neuronal physiology. We therefore advise to use eolTRPA1 in this case, with  $T_{\text{ON}}$  closer to normal temperature of the mammalian brain. The channel with  $T_{\text{ON}}$  optimal for *in vivo* stimulation in mammals is yet to be found.

***In vivo* thermogenetic stimulation of neurons.** In most of the earlier studies *in vivo*, heat-sensitive TRP channels were activated using either chemical agonists or ambient temperature elevation. These stimulation techniques are inevitably non-local and non-selective, activating all the TRP-expressing cells in a sample. Furthermore, these methods can neither provide repeated activation within a short period of time nor prevent sustained activation of neurons, thus tending to induce toxic effects for the cells because of  $\text{Ca}^{2+}$  overload. All these issues can be addressed by applying laser radiation for TRP channel activation. In the previous sections, we presented our experiments demonstrating the activation of heterologously expressed caTRPA1 in mouse neurons (Figs 4 and 5). Remarkably, the activation threshold of caTRPA1 in these experiments is just  $1^\circ$  or  $2^\circ$  above  $26^\circ\text{C}$  which is a permissive temperature for *D. rerio* maintenance, enabling *in vivo* activation of caTRPA + zebrafish neurons using IR laser radiation.

We generated a vector for caTRPA1 expression in zebrafish under control of CREST3 somatosensory enhancer<sup>52</sup> that drives the expression of the channel and tdTomato in trigeminal and Rohon-Beard sensory neurons<sup>53,54</sup> (Fig. 6a,b). The embryos were injected at the single-cell stage and analysed at days 2–2.5 post fertilization. Typically, 5–10 neurons transiently expressing caTRPA1 per embryo were detected as a result of this procedure. Control animals expressed tdTomato only.

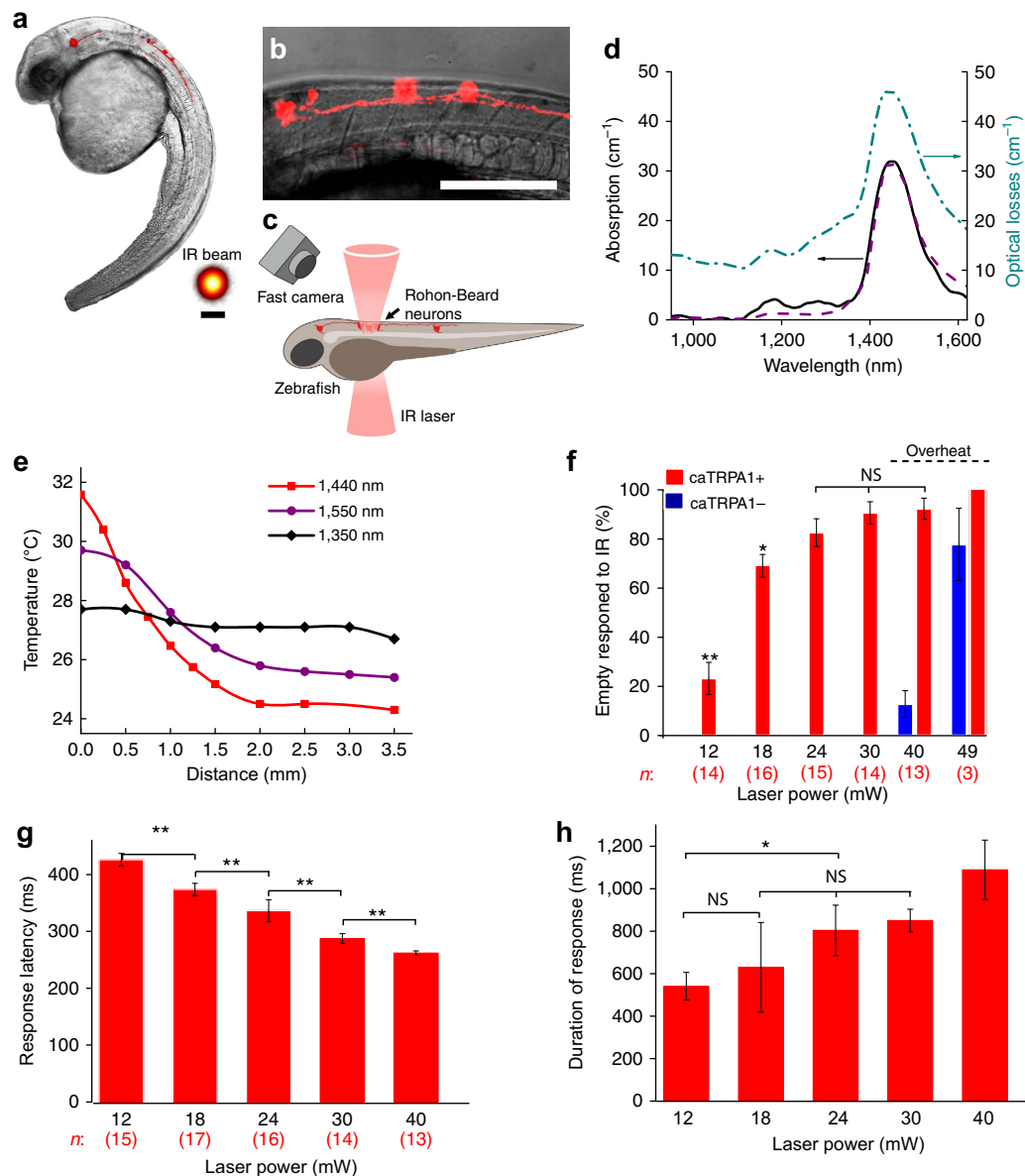
Prior to the laser stimulation experiments, we studied the optical transparency of zebrafish larvae at 24 h.p.f. A parallel beam selected from an incandescent lamp with a diaphragm was focused into a 40- $\mu\text{m}$ -diameter spot upon the area of Rohon –

Beard neurons and the transmitted IR radiation was analysed using an IR spectrometer. The IR power loss spectrum measured in this experiment (dash-dotted line in Fig. 6d) closely follows the spectrum of water absorption, as presented in (ref. 35) (dashed line in Fig. 6d) and measured in our experiments for calibration purposes (solid line in Fig. 6d). Stimulation of the fish neurons using laser radiation at 1,440 nm was not efficient due to strong absorption by water in which the larvae were immersed. To identify the most suitable wavelength, we measured the temperature in water as a function of the distance from the bottom of the Petri dish inside the illuminated water column for different wavelengths of IR laser radiation (Fig. 6e). The wavelength of 1,350 nm was chosen as a result of this study, as quasi-cw IR radiation of the femtosecond OPO at this wavelength was found to induce stable temperature profiles within 3 mm from the bottom of the Petri dish, providing enough space for neuron stimulation experiments.

For IR stimulation, the embryos were dechorionated and polymerized in low-melting-point agarose. The embryos were kept at  $25^\circ\text{C}$  for 10–15 min before IR stimulation to let them recover from the stressful embedding procedure. The wavelength-tunable OPO was employed as a source of IR laser pulses for *in vivo* thermogenetic neurostimulation in experiments with zebrafish. A mechanical shutter was used to select isolated 500-ms trains of 100-fs pulses out of the 78-MHz quasi-cw, 1,350-nm OPO output. The IR laser beam was focused with a 25-cm-focal-length lens into an area 60  $\mu\text{m}$  in diameter. Such a broad IR laser beam allowed stimulation of single neurons and small groups of neurons. Laser stimulation of cells induced the escape behaviour in 12 out of the 17 caTRPA1 + embryos studied in our experiments (Supplementary Movie 1, Supplementary Fig. 13). The efficiency of stimulation was found to be a strong function of the laser power. Specifically, laser radiation with  $P \approx 12$  mW induced muscle contraction in 23% of the animals. With laser power increased to 18 mW and 30 mW, 72% and 93% of the larvae, respectively, exhibited the escape behaviour (Fig. 6f) with no change in the behaviour of caTRPA1– animals. With a further increase in the pulse power up to 40 mW, escape behaviour was also observed in 11% of caTRPA1– animals. This effect is most probably due to the activation of a higher- $T_{\text{ON}}$  endogenous fish TRPV1, which is expressed in somatosensory neurons<sup>55</sup>. Although the dynamic range of the laser powers evoking specific vs. non-specific response is low (from 12 to 40 mW, less than fourfold), this limitation is likely larger due to the intrinsic thermosensitivity of the TRPV1-expressing somatosensory neurons. This emphasizes the importance of choosing a proper channel for thermogenetic activation, which needs to open at a temperature just a few degrees above the normal animal temperature to ensure that only neurons expressing the desired channels are activated with carefully adjusted, very mild heating.

The time lag of the animal response was a function of the power of laser radiation used for stimulation. With  $P \approx 30$  mW, the animals started to respond, on average, with a time lag of about  $288 \pm 8$  ms (Fig. 6g). Notably, at this laser power, no response from caTRPA1– animals was detected. Given that the channels open, as our electrophysiological studies demonstrate, within 1–3 ms after the temperature reaches the channel activation threshold and that the action potential starts to build-up within another 35–40 ms, the observed time lag of the animal response likely reflects the dynamics of heating.

A typical response of animals to IR stimulation was found to last 0.5–1.1 s, allowing 1–3 tail movements to be captured. The duration of this response showed dependence on the laser intensity (Fig. 6h).



**Figure 6 | *In vivo* activation of *caTRPA1*-expressing neurons in zebrafish.** (a) A fluorescent image of *caTRPA1* and *tdTomato*-expressing neurons overlaid with an image of 2 d.p.f. zebrafish in transmitted light. The inset shows the laser beam; the scale bar, 60  $\mu\text{m}$ . (b) A magnified image of Rohon – Beard neurons. (c) Diagram of activation of Rohon – Beard neurons and detection of the behavioural response in the fish larva using fast camera. (d) The spectrum of water absorption, as measured in a calibration experiment (solid line) and according to (ref. 35) (dashed line) versus the IR attenuation spectrum measured for a 2 d.p.f. zebrafish tissue. (e) The temperature measured as a function of the distance from the bottom of the Petri dish with a quasi-cw 35-mW femtosecond OPO output with a central wavelength of 1,350 nm (diamonds), 1,440 nm (squares) and 1,550 nm (circles). (f) Escape behaviour of *D. rerio* larvae studied as a function of laser power. Percentage of responded embryos grows up from 12 to 24 mW and shows no significant difference between 24 and 40 mW. At laser powers higher than 40 mW, *caTRPA1* – animals start to respond because of the activation of endogenous fish channels; *n* is the number of embryos in experiment. Averaging is over 3 experiments per individual fish. (g) The response latency of the escape behaviour as a function of the laser power. *n* is the number of embryos in experiment. Averaging is over five experiments per individual fish. (h) Time duration of the animal response to IR stimulation as a function of the laser power. Averaging is over five experiments per individual fish. ns—not significant. \* $P < 0.05$ , \*\* $P < 0.01$ , one-way ANOVA, followed by Bonferroni correction and Duncan *post hoc* test. The error bars represent the s.e.m.

To summarize, the results of *in vivo* experiments demonstrate that IR stimulation is a powerful tool for a thermogenetic activation of living animals, providing spatial and temporal resolution unattainable with agonist-induced stimulation or with ambient temperature changes.

## Discussion

Pit-bearing snake species have evolved thermosensitivity based on the TRPA1 channels expressed in the pit sensory neurons<sup>24</sup>.

There are several requirements for such a thermosensing system. First, it should be very sensitive as prey is localized by the snake at a certain distance, up to 1 m. As a result, only a small number of IR photons emitted by the prey reaches the pit membrane. To cope with this, snakes have evolved channels with extremely low activation thresholds. When combined with very high expression levels of TRPA1 in pit neurons, this drastically increases the sensitivity of the pit membrane to low-intensity IR radiation, making sure that the number of open thermosensitive channels in the membrane is sufficient for action potential generation.

Second, the thermosensation system in such snakes should be protected against a sustained open state of its thermosensitive channels. The temperatures many of the snake species are subject to during the day exceed the  $T_{ON}$  for their thermosensitive channels, which may lead to  $Ca^{2+}$  overload and death of neurons. To prevent this, an efficient mechanism that would shut down the channels sustained in the open state for a long period of time is needed. In our experiments, continuous laser irradiation keeps a substantial fraction of the channels open on the timescale of seconds and even minutes (Figs 3 and 4), resulting in a sustained cytosolic  $Ca^{2+}$  increase. As another pertinent result, our studies have revealed that neurons expressing caTRPA1 ( $T_{ON} = 28.5^\circ C$ ) can efficiently function even in mammalian cells cultured at a standard cell culture temperature of  $37^\circ C$ , that is, well above the  $T_{ON}$  threshold. These findings indicate that some yet unidentified mechanism inactivates the channels kept for a long time at high temperatures. We can only speculate at this stage that this mechanism can involve a partial unfolding of some of the protein substructures under constantly high temperatures. This feature of the caTRPA1 made possible a detailed characterization of the channel response in mammalian neurons presented in our study.

When using ion channels for optogenetic manipulation, the information about correct targeting of the channel to the plasma membrane is important. Usually FPs linked to the channel moiety provide essential information about targeting/mistargeting of the channel. However, sometimes protein termini are essential for the correct protein cellular localization and activity. We therefore tested several possible targeting strategies for caTRPA1 and found that they all, in fact, disturb the channel in some ways. In our experiments, C-terminal fusion of caTRPA1 with FP, although reported earlier as a thermogenetic tool in zebrafish<sup>21</sup>, demonstrated very poor performance compared to the N-terminal fusion or wild-type protein. This result can be attributed to the position of C-terminus in the structure of caTRPA1 essential for homotetramer formation<sup>56</sup>.

N-terminal fusion mNeonGreen-caTRPA1 was almost as efficient in activating cells as the wild-type channel. However, in neuronal cells, the N-terminal fusion demonstrated a very low expression level (estimated from the low brightness of the fusion in the cells). We therefore used wild-type channels in our experiments.

Heat-sensitive TRP channels can be robustly activated in three different ways. First, chemical agonists such as capsaicin or AITC can activate them, bringing all the advantages and disadvantages of chemogenetics<sup>21</sup>. As a useful feature of this approach, a drug can activate the entire neuronal circuit with a maximal efficiency. Pitfalls include slow drug application/removal times, which excludes fast repeated activation. The second approach is the change of ambient temperature. This approach is used in the most of the reports on thermogenetic manipulation of fruit flies<sup>18,19</sup> and, recently, zebrafish<sup>21</sup>. A change in the temperature in the entire animal allows activation of the entire population of neurons expressing the channel with temporal resolution much higher than that attainable with chemogenetics. However, the spatial resolution is still low, allowing only a certain group of neurons to be activated, providing no means to address individual neurons. The third, optical approach relies on IR laser stimulation of TRP channels. This technique offers numerous advantages, including unprecedented spatial resolution, ultrafast channel activation rates, broadly tunable radiation intensity and wavelength, as well as duration of stimulation that can be easily adapted to a broad variety of organisms. Prior to this work, IR irradiation was used only in a few studies on *Drosophila* thermogenetics<sup>14,22</sup>. The study describing the FlyMAD approach elegantly demonstrates the flexibility and, to a large extent,

automation of thermogenetic stimulation using IR lasers. The study presented here further develops the idea of using the IR photonics for thermogenetics, demonstrating that this technology enables activation of mouse neurons and zebrafish locomotor responses and showing that the thermogenetic manipulation can be implemented with single-cell resolution and ultrahigh temporal precision.

With rare exception<sup>21</sup>, studies involving thermogenetics utilize homologous expression of species-specific TRP channels. In our view, homologous expression should be avoided because the natural host cells can often modify the channel function using numerous post-translation modifications<sup>23</sup>. Heterologously expressed channels, on the other hand, will be less prone to these modifications as many of them are cell- and species-specific. We demonstrate here that, having evolved as molecular tools for remote temperature sensing, snake TRPA1 channels can efficiently depolarize and induce action potentials in mouse and zebrafish neurons stimulated with low-power IR radiation.

While optogenetics with visible light activation provides universal and powerful tools, allowing the same channel to be used in a variety of model organisms, thermogenetics adds yet another important dimension to the technology, offering a diversity of heat-activated TRP channels with distinctly different activation thresholds, making it possible to find the best match for each species. Specifically, caTRPA1 with its  $T_{ON}$  of  $\sim 28^\circ C$  opens at just  $1-2^\circ$  above  $26-27^\circ C$  that falls within the normal zebrafish maintaining temperature range. This channel is thus ideally suited for *in vivo* studies of neurostimulation in zebrafish, as well as in a broad variety of ectotherm species, such as *Drosophila melanogaster* and *Caenorhabditis elegans*. On the other hand, TRP channels with higher activation thresholds,  $\sim 38-39^\circ C$ , would enable *in vivo* studies on rodent neurons. The eoTRPA1 is a promising tool for such studies. However, accurate measurements of the temperature in the brain of mice and rats are still to be performed.

Yet another important advantage of the thermogenetic technology is that sample cultivation and raising animal for thermogenetic studies does not require artificial disruption of light, which may have unwanted effects on normal circadian rhythms, important for the development of many species, including zebrafish. This suggests the way to avoid one of the serious difficulties of optogenetic technologies, which require larvae expressing photoactivated opsins, for example, to be grown in the dark to prevent unwanted circuit activation.

Heating tissue by  $1-3^\circ$  over a short period of time usually does not produce any toxic effect. Stronger heating of TRPA-expressing cells, however, should be avoided as potentially causing cell ablation<sup>21</sup>. Therefore, a careful choice of TRP channels operating just above the animal natural temperature is of crucial importance for thermogenetics. As a reward, mild laser intensities together with high TRP channel conductance and reasonable penetration depths (up to several millimetres<sup>57,58</sup>) of IR light in tissues make thermogenetic neurostimulation less invasive compared to canonical optogenetic instruments.

Protecting tissue from overheating in thermogenetic studies engaging IR lasers is as important as protecting neurons from the phototoxicity caused by high-intensity visible light in optogenetics. Local temperatures should be carefully measured in thermogenetic studies to avoid excessive heating, which tends to induce toxic effects and non-specific activation of endogenous TRP channels. In our study, we utilized a fibre-based quantum thermometry, which allows *in situ* temperature measurements with high spatial resolution and with temperature sensitivity as high as  $0.1^\circ C$ . Such a calibration is critical for an accurate adjustment of the laser power and laser wavelength for a particular organism.



808-nm output of the Ti:sapphire laser was used as a pump for the OPO, which delivered sub-100-fs pulses with a typical energy of 5 nJ at a pulse repetition rate of 78 MHz, covering the wavelength range from 1,030 to 1,580 nm as its signal-wave output and from 1,680 to 2,100 nm as its idler-wave output. To generate tunable trains of femtosecond pulses for photostimulation experiments, the quasi-cw OPO output was modulated with a mechanical shutter or an electro-optical chopper.

**HEK293 photostimulation.** For HEK293 stimulation, the quasi-cw OPO output at 1,440 nm was loosely focused with a 1-m-focal-length lens into a spot 670  $\mu\text{m}$  in diameter (Fig. 2b), providing a uniform irradiation of a large number of TRPA-expressing cells close to the beam centre. Glass-bottom Petri dishes with cultured cells were placed on a stage of an upright multiphoton microscope (Thorlabs) equipped with XLUMPLFN objective (NA1.05, Olympus). Continuous-wave laser sources with wavelengths of 473 and 532 nm and an average power up to 50 mW were used for R-GECO1, EGFP, GCaMP6s and tdTomato visualization. Fluorescence from EGFP and GCaMP6s was filtered with an FELH0500 (Thorlabs) low-frequency filter and an FF01-510/42 (Semrock) bandpass filter. The signal from R-GECO1.1 and tdTomato was filtered with a NF533-17 (Thorlabs) notch filter and an FF01-607/70 (Semrock) bandpass filter. Fluorescence images were recorded using a cooled CCD camera 4070M-GE-TE (Thorlabs) with  $4 \times 4$  binning and a 900-ms exposure.

**Photostimulation of neurons.** Photostimulation of neurons was studied using the chopped OPO output, delivering trains of femtosecond IR pulses at 1,440 nm with a tunable pulse-train duration and pulse-train repetition rate. The caTRPA1-expressing neurons were activated with isolated 10-ms trains of 1,440-nm femtosecond laser pulses produced by optically chopping the OPO output. The IR laser beam was focused with a 40-cm-focal-length lens into an area 60  $\mu\text{m}$  in diameter (See temperature profile on Supplementary Fig. 14). An InGaAs photodiode (PDA10DT, Thorlabs) was used to measure the duration of laser pulse trains.

**Single-cell fibre-optic thermometry.** A fibre-optic temperature sensor used in our experiments integrates an optical fibre, an NV-diamond microcrystal, and a two-wire microwave transmission line<sup>38,39</sup>. To measure the temperature at the chosen site within the cell culture, the microwave field, delivered through the two-wire microwave transmission line integrated with the fibre, is applied to couple the spin sublevels of ground-state NV centres in diamond, polarized by 532-nm laser radiation transmitted through the optical tract of the fibre probe. This laser radiation transfers population from the  $^3A$  ground state to the  $^3E$  excited state. The photoluminescence (PL) emitted as a result of this process features a zero-phonon line at approximately 637 nm, observed as a well-resolved peak on a broad phonon-sideband line. This PL signal is collected by the same optical fibre. The optical tract of the fibre then serves to transmit this signal to the detection system, which consists of a silicon photodiode, a low-noise preamplifier, and a lock-in amplifier.

Temperature measurements are performed using optically detected magnetic resonance (ODMR)<sup>39,40</sup>. As the temperature of diamond increases, following the temperature in the ambient medium, the profile of the zero-external-magnetic-field ODMR is shifted towards lower microwave frequencies, enabling temperature measurements with a high spatial resolution. For the highest sensitivity and highest speed of local temperature measurements in a cell culture, frequency-modulated microwave spin excitation in NV centres was combined with properly optimized differential lock-in detection<sup>36,37</sup>.

**Electrophysiology and imaging of cultured mammalian neurons.** Action potentials in neurons were activated with heat induced by a pulsed output of a compact ytterbium fibre laser (IPG Photonics), delivering continuous-wave IR radiation at a wavelength of 1,050 nm with an average power up to 10 W, and by millisecond laser pulses at a wavelength of 1,342 nm produced by a diode-pumped solid-state laser. A mechanical shutter (SHB05, Thorlabs) was synchronized with the current-amplification controller (DigiData 1440A ADC board) to select 30- to 50-ms pulses out of the cw output of the ytterbium fibre laser. IR laser radiation was coupled into an optical fibre with a core diameter of 50  $\mu\text{m}$  and a numerical aperture of 0.22 with the help of high-precision translation stages (Thorlabs) and delivered through this fibre to the targeted areas within the neurons under study. The distal end of the fibre was positioned at a distance of 0.3 mm from a targeted cell using a motorized micromanipulator Junior (Luigs and Neumann, Germany). The laser-irradiated area, imaged with a camera, had a shape of an ellipse with principal axes of 90 and 150  $\mu\text{m}$  (Supplementary Fig. 9a).

The temperature  $T$  in electrophysiological experiments was determined by measuring the current  $I$  through the patch electrode<sup>62</sup>,

$$I = I_0 \exp\left(-\alpha\left[\frac{1}{T} - \frac{1}{T_0}\right]\right) \quad (1)$$

where  $I_0$  is the initial current at a temperature of 27 or 35.5  $^{\circ}\text{C}$ , set as the initial temperature before the experiment and  $\alpha$  is the experimentally determined calibration coefficient. Calibration measurements were performed on the medium that was used for neuron studies. The micropipette electrode was placed inside this medium, which was preheated to 36  $^{\circ}\text{C}$ . We then measured the electric current through this electrode induced by an applied a voltage of 22 mV. The best linear fit

for the  $I(1/T)$  dependence, plotted using these current readings, yields  $\alpha \approx 1,311 \pm 57 \text{ K}^{-1}$ .

The micropipette was then heated by 30- and 50-ms pulses of 1,050-nm laser radiation delivered through an optical fibre whose tip was positioned at a distance of 250  $\mu\text{m}$  from the micropipette, thus mimicking conditions of neuron studies. Supplementary Fig. 9c shows the temperature profiles at the centre of the laser-irradiated area retrieved from current measurements using the running-average algorithm, applied to 100 data points within a 2-ms time window, thus filtering out the high-frequency noise of the electric current. With a pulse energy of 9 nJ, the temperature was found to rapidly increase from 27 to 28.7  $^{\circ}\text{C}$  and 29.3  $^{\circ}\text{C}$  for laser pulse widths of 30 or 50 ms, respectively (Supplementary Fig. 9c), thus heating the medium above the caTRPA1 activation threshold.

A coverslip with transfected neurons was placed in the recording chamber of an upright fluorescence confocal microscope and superfused with bath solution (in mM: 125 NaCl, 25 NaHCO<sub>3</sub>, 27.5 glucose, 2.5 KCl, 1.25 NaH<sub>2</sub>PO<sub>4</sub>, 2 CaCl<sub>2</sub> and 1.5 MgCl<sub>2</sub>, pH 7.4) preaerated with 95% O<sub>2</sub>, 5% CO<sub>2</sub>. Patch clamp recording was performed in the current-clamp and voltage-clamp modes. Borosilicate glass electrodes (resistance of 5 M $\Omega$ ) were filled with a solution containing (in mM) 132 K-gluconate, 20 KCl, 4 Mg-ATP, 0.3 Na<sub>2</sub>GTP, 10 Na-Phosphocreatine, 10 HEPES, pH 7.25 (all from Sigma, St Louis, MO, USA). The current was increased in a stepwise manner with an Axoclamp 2B amplifier (Axon Instruments, USA) driven with a DigiData 1440A ADC board (both from Molecular Devices, Sunnyvale, CA, USA). During electrophysiological studies, the recording chamber was kept at a temperature of  $27 \pm 0.5$   $^{\circ}\text{C}$  (for caTRPA1 channel) or  $35.5 \pm 0.5$   $^{\circ}\text{C}$  (for eolTRPA1 channel) and perfused at a constant rate of 3 ml min<sup>-1</sup>. Confocal imaging of tdTomato was performed with a Zeiss LSM 5 Live microscope (Germany) in the epifluorescent mode (with excitation at 532 nm and emission at 550 nm).

**Zebrafish egg microinjection and screening.** Animal experiments were performed in accordance with guidelines approved by the Shemyakin-Ovchinnikov Institute of Bioorganic Chemistry (Moscow, Russia) Animal Committee and handled in accordance with the Animals (Scientific Procedures) Act 1986 and Helsinki Declaration.

For zebrafish larvae samples preparation we used protocol based on (ref. 54) with several modifications. 0.58 d needles were filled with 4–7  $\mu\text{l}$  DNA plasmid mix in 0.1 M KCl (experimental mix—pC1:CREST3:LexA:LexAop:caTRPA1 with pC1:LexAop:tdTomato; control mix -pC1:CREST3:LexA:LexAop with pC1:LexAop:tdTomato) and used for injection of 1–2 cell stage embryos into the yolk with calibrated injection volume about 1 nl.

Injected embryos (AB/TL strain) were stored at 26.5  $^{\circ}\text{C}$  in the Petri dish in facility 12:12 light and dark cycle, unfertilized, damaged or dead embryos were periodically removed.<sup>9</sup> On the second day, post fertilization embryos were manually cleaned from chorion, anaesthetized with 0.02% tricaine and screened for transgene expression using a Leica DM6000 wide-field fluorescent microscope.

Rohon-Beard or trigeminal neuron expression were identified in 40–60% of injected embryos, 5–10 neurons per embryo.

**Zebrafish larvae escape behaviour experiments.** Screen positive embryos were mounted in 1.5% low melt agarose in ddH<sub>2</sub>O at 35  $^{\circ}\text{C}$  then samples were incubated at 25  $^{\circ}\text{C}$  up to 15 min to decrease high activity of caTRPA<sup>+</sup> embryos. Then on a Petri dish agarose was removed from larva's tail with two diagonal cuts at either side of the yolk using a thin razor blade (#20) and pulling agarose away from the trunk and tail of the larva after addition of embryo water.

The wavelength-tunable OPO was employed as a source of IR laser pulses for *in vivo* thermogenetic neurostimulation. A mechanical shutter was used to select isolated 500-ms trains of 100-fs pulses out of the 78-MHz quasi-cw, 1,350-nm OPO output. The IR laser beam was focused with a 25-cm-focal-length lens into an area 60  $\mu\text{m}$  in diameter. The behavioural response was detected using a CCD camera (DCU224M, Thorlabs), operated in the video-recording mode at a rate of 60 fps.

To analyse the statistics of the behavioural response, muscle movement of the tail were monitored for full mounted embryos (Supplementary Movie 1). In an experiment with 10 larvae, muscle movements were found to totally correlate with the escape behaviour of larvae.

For larvae used in IR inducible movement analysis the animals were considered as response to IR if tail movement occurred not later than the 100–500 ms IR pulse ends in 10 s long record. For each IR power we produced 2–3 activations for individual embryo. Embryo was counted as responded to IR stimulation only if in all cases of activation it showed a positive response to IR stimulus. In case of negative responses (no tail movement or movement after the pulse) for a given IR power, such larvae were considered as non-responded to IR stimulation.

The response latency was counted as number of frames from the start of IR impulse to the first frame with tail movement and then converted to timescale (ms) using camera predetermined frequency (16.6–60 fps).

## References

- Lima, S. Q. & Miesenbock, G. Remote control of behavior through genetically targeted photostimulation of neurons. *Cell* **121**, 141–152 (2005).
- Boyden, E. S., Zhang, F., Bamberg, E., Nagel, G. & Deisseroth, K. Millisecond-timescale, genetically targeted optical control of neural activity. *Nat. Neurosci.* **8**, 1263–1268 (2005).

3. Emiliani, V., Cohen, A. E., Deisseroth, K. & Hausser, M. All-optical in interrogation of neural circuits. *J. Neurosci.* **35**, 13917–13926 (2015).
4. Zhang, F. *et al.* Multimodal fast optical interrogation of neural circuitry. *Nature* **446**, 633–639 (2007).
5. Deisseroth, K. Optogenetics: 10 years of microbial opsins in neuroscience. *Nat. Neurosci.* **18**, 1213–1225 (2015).
6. Lin, J. Y., Knutsen, P. M., Muller, A., Kleinfeld, D. & Tsien, R. Y. ReaChR: a red-shifted variant of channelrhodopsin enables deep transcranial optogenetic excitation. *Nat. Neurosci.* **16**, 1499–1508 (2013).
7. Klapoetke, N. C. *et al.* Independent optical excitation of distinct neural populations. *Nat. Methods* **11**, 338–346 (2014).
8. Prakash, R. *et al.* Two-photon optogenetic toolbox for fast inhibition, excitation and bistable modulation. *Nat. Methods* **9**, 1171–1179 (2012).
9. Silies, M., Gohl, D. M. & Clandinin, T. R. Motion-detecting circuits in flies: coming into view. *Ann. Rev. Neurosci.* **37**, 307–327 (2014).
10. Dawydow, A. *et al.* Channelrhodopsin-2-XXL, a powerful optogenetic tool for low-light applications. *Proc. Natl Acad. Sci. USA* **111**, 13972–13977 (2014).
11. Feldbauer, K. *et al.* Channelrhodopsin-2 is a leaky proton pump. *Proc. Natl Acad. Sci. USA* **106**, 12317–12322 (2009).
12. Bernstein, J. G., Garrity, P. A. & Boyden, E. S. Optogenetics and thermogenetics: technologies for controlling the activity of targeted cells within intact neural circuits. *Curr. Opin. Neurobiol.* **22**, 61–71 (2012).
13. Tominaga, M. & Caterina, M. J. Thermosensation and pain. *J. Neurobiol.* **61**, 3–12 (2004).
14. Bath, D. E. *et al.* FlyMAD: rapid thermogenetic control of neuronal activity in freely walking *Drosophila*. *Nat. Methods* **11**, 756–762 (2014).
15. Chen, R., Romero, G., Christiansen, M. G., Mohr, A. & Anikeeva, P. Wireless magnetothermal deep brain stimulation. *Science* **347**, 1477–1480 (2015).
16. Stanley, S. A. *et al.* Radio-wave heating of iron oxide nanoparticles can regulate plasma glucose in mice. *Science* **336**, 604–608 (2012).
17. Hamada, F. N. *et al.* An internal thermal sensor controlling temperature preference in *Drosophila*. *Nature* **454**, 217–220 (2008).
18. Pulver, S. R., Pashkovski, S. L., Hornstein, N. J., Garrity, P. A. & Griffith, L. C. Temporal dynamics of neuronal activation by Channelrhodopsin-2 and TRPA1 determine behavioral output in *Drosophila* larvae. *J. Neurophysiol.* **101**, 3075–3088 (2009).
19. Vasmer, D., Pooryasin, A., Riemsperger, T. & Fiala, A. Induction of aversive learning through thermogenetic activation of Kenyon cell ensembles in *Drosophila*. *Front. Behav. Neurosci.* **8**, 174 (2014).
20. Kohatsu, S., Koganezawa, M. & Yamamoto, D. Female contact activates male-specific interneurons that trigger stereotypic courtship behavior in *Drosophila*. *Neuron* **69**, 498–508 (2011).
21. Chen, S., Chiu, C. N., McArthur, K. L., Fetcho, J. R. & Prober, D. A. TRP channel mediated neuronal activation and ablation in freely behaving zebrafish. *Nat. Methods* **13**, 147–150 (2016).
22. Keene, A. C. & Masek, P. Optogenetic induction of aversive taste memory. *Neuroscience* **222**, 173–180 (2012).
23. Takahashi, N. & Mori, Y. TRP channels as sensors and signal integrators of redox status changes. *Front. Pharmacol.* **2**, 58 (2011).
24. Gracheva, E. O. *et al.* Molecular basis of infrared detection by snakes. *Nature* **464**, 1006–1011 (2010).
25. Adamantidis, A. R., Zhang, F., de Lecea, L. & Deisseroth, K. Optogenetics: opsins and optical interfaces in neuroscience. *Cold Spring Harb. Protocols* **2014**, R15–R22 (2014).
26. Filbin, M. E., Vollmar, B. S., Shi, D., Gonen, T. & Kieft, J. S. HCV IRES manipulates the ribosome to promote the switch from translation initiation to elongation. *Nat. Struct. Mol. Biol.* **20**, 150–158 (2013).
27. Zhao, Y. *et al.* HCV IRES-mediated core expression in zebrafish. *PLoS ONE* **8**, e56985 (2013).
28. Kim, J. H. *et al.* High cleavage efficiency of a 2A peptide derived from porcine teschovirus-1 in human cell lines, zebrafish and mice. *PLoS ONE* **6**, e18556 (2011).
29. Cinelli, R. A. *et al.* The enhanced green fluorescent protein as a tool for the analysis of protein dynamics and localization: local fluorescence study at the single-molecule level. *Photochem. Photobiol.* **71**, 771–776 (2000).
30. Shaner, N. C. *et al.* A bright monomeric green fluorescent protein derived from *Branchiostoma lanceolatum*. *Nat. Methods* **10**, 407–409 (2013).
31. Shaner, N. C. *et al.* Improved monomeric red, orange and yellow fluorescent proteins derived from *Discosoma* sp. red fluorescent protein. *Nat. Biotechnol.* **22**, 1567–1572 (2004).
32. Zhao, Y. *et al.* An expanded palette of genetically encoded Ca<sup>2+</sup>(+) indicators. *Science* **333**, 1888–1891 (2011).
33. Chen, T. W. *et al.* Ultrasensitive fluorescent proteins for imaging neuronal activity. *Nature* **499**, 295–300 (2013).
34. Gracheva, E. O. *et al.* Ganglion-specific splicing of TRPV1 underlies infrared sensation in vampire bats. *Nature* **476**, 88–91 (2011).
35. Palmer, K. F. & Williams, D. Optical properties of water in the near infrared\*. *J. Opt. Soc. Am.* **64**, 1107–1110 (1974).
36. Voronin, A. A. *et al.* Ionization penalty in nonlinear Raman neuroimaging. *Opt. Lett.* **36**, 508–510 (2011).
37. Voronin, A. A. & Zheltikov, A. M. Ionization penalty in nonlinear optical bioimaging. *Phys. Rev. E, Stat. Nonlin. Soft Matter Phys.* **81**, 051918 (2010).
38. Fedotov, I. V. *et al.* Fiber-based thermometry using optically detected magnetic resonance. *Appl. Phys. Lett.* **105**, 261109–261113 (2014).
39. Fedotov, I. V. *et al.* Fiber-optic control and thermometry of single-cell thermosensation logic. *Sci. Rep.* **5**, 15737 (2015).
40. Safronov, N. A. *et al.* Microwave-induced thermogenetic activation of single cells. *Appl. Phys. Lett.* **106**, 163702–163704 (2015).
41. Peterson, E. J. & Tyler, D. J. Motor neuron activation in peripheral nerves using infrared neural stimulation. *J. Neural Eng.* **11**, 016001 (2014).
42. Dittami, G. M., Rajguru, S. M., Lasher, R. A., Hitchcock, R. W. & Rabbitt, R. D. Intracellular calcium transients evoked by pulsed infrared radiation in neonatal cardiomyocytes. *J. Physiol.* **589**, 1295–1306 (2011).
43. Orsinger, G. V., Williams, J. D. & Romanowski, M. Focal activation of cells by plasmon resonance assisted optical injection of signaling molecules. *ACS Nano* **8**, 6151–6162 (2014).
44. Ando, J., Smith, N. I., Fujita, K. & Kawata, S. Photogeneration of membrane potential hyperpolarization and depolarization in non-excitable cells. *Eur. Biophys. J.* **38**, 255–262 (2009).
45. Beier, H. T., Tolstykh, G. P., Musick, J. D., Thomas, R. J. & Ibey, B. L. Plasma membrane nanoporation as a possible mechanism behind infrared excitation of cells. *J. Neural Eng.* **11**, 066006 (2014).
46. Tseeb, V., Suzuki, M., Oyama, K., Iwai, K. & Ishiwata, S. Highly thermosensitive Ca dynamics in a HeLa cell through IP(3) receptors. *HFSP J.* **3**, 117–123 (2009).
47. Itoh, H., Oyama, K., Suzuki, M. & Ishiwata, S. Microscopic heat pulse-induced calcium dynamics in single WI-38 fibroblasts. *Biophys. J.* **106**, 109–119 (2014).
48. Avdesh, A. *et al.* Regular care and maintenance of a zebrafish (*Danio rerio*) laboratory: an introduction. *J. Vis. Exp.* **69**, e4196 (2012).
49. Matthews, M., Trevarrow, B. & Matthews, J. A virtual tour of the guide for zebrafish users. *Lab. Anim.* **31**, 34–40 (2002).
50. Pavlidis, M. *et al.* Husbandry of zebrafish, *Danio rerio*, and the cortisol stress response. *Zebrafish* **10**, 524–531 (2013).
51. Levi, R., Akanyeti, O., Ballo, A. & Liao, J. C. Frequency response properties of primary afferent neurons in the posterior lateral line system of larval zebrafish. *J. Neurophysiol.* **113**, 657–668 (2015).
52. Uemura, O. *et al.* Comparative functional genomics revealed conservation and diversification of three enhancers of the *isl1* gene for motor and sensory neuron-specific expression. *Develop. Biol.* **278**, 587–606 (2005).
53. Douglass, A. D., Kraves, S., Deisseroth, K., Schier, A. F. & Engert, F. Escape behavior elicited by single, channelrhodopsin-2-evoked spikes in zebrafish somatosensory neurons. *Curr. Biol.* **18**, 1133–1137 (2008).
54. Palanca, A. M. & Sagasti, A. Optogenetic activation of zebrafish somatosensory neurons using ChEF-tdTomato. *J. Vis. Exp.* **71**, e50184 (2013).
55. Gau, P. *et al.* The zebrafish ortholog of TRPV1 is required for heat-induced locomotion. *J. Neurosci.* **33**, 5249–5260 (2013).
56. Paulsen, C. E., Armache, J. P., Gao, Y., Cheng, Y. & Julius, D. Structure of the TRPA1 ion channel suggests regulatory mechanisms. *Nature* **520**, 511–517 (2015).
57. Bashkatov, A. N., Genina, E. A., Kochubey, V. I. & Tuchin, V. V. Optical properties of human skin, subcutaneous and mucous tissues in the wavelength range from 400 to 2000 nm. *J. Phys. D: Appl. Phys.* **38**, 2543 (2005).
58. Jacques, S. L. Optical properties of biological tissues: a review. *Phys. Med. Biol.* **58**, R37–R61 (2013).
59. Caterina, M. J., Rosen, T. A., Tominaga, M., Brake, A. J. & Julius, D. A capsaicin-receptor homologue with a high threshold for noxious heat. *Nature* **398**, 436–441 (1999).
60. Seibenhener, M. L. & Wooten, M. W. Isolation and culture of hippocampal neurons from prenatal mice. *J. Vis. Exp.* **65**, pii: 3634 (2012).
61. Lanin, A. A. *et al.* A compact laser platform for nonlinear Raman microspectroscopy: multimodality through broad chirp tunability. *J. Raman Spectrosc.* **47**, 1042–1048 (2016).
62. Yao, J., Liu, B. & Qin, F. Rapid temperature jump by infrared diode laser irradiation for patch-clamp studies. *Biophys. J.* **96**, 3611–3619 (2009).

## Acknowledgements

We thank Y. Panchin for a fruitful discussion, D. Julius for sharing caTRPA1 and eolTRPA1 genes, A. Sagasti for sharing the CREST3- and LexA:LexAop-containing gene constructs, pGP-CMV-GCaMP6s was a gift from Douglas Kim (Addgene plasmid #40753), CMV-R-GECO1.1 was a gift from Robert Campbell (Addgene plasmid #32444). The work was supported by Russian Science Foundation project 14-14-00747 (to V.V.B.). The research of E.S.N., V.V.B., A.A.L., I.V.F., A.B.F. and A.M.Z. was supported in part by the Russian Foundation for Basic Research (projects 16-04-00490, 14-29-07263, 14-29-07182, 16-32-80141, 16-52-00190 and 16-29-11799), Molecular and Cell Biology Programme of Russian Academy of Sciences (to E.S.N.), Welch Foundation (Grant No. A-1801) and Government of Russian Federation (project no. 14.Z50.31.0040, Feb. 17, 2017).

## Author contributions

Y.G.E. and A.A.L. contributed equally to this work. V.V.B. and A.M.Z. conceived the project and wrote the text; Y.G.E., A.A.L. and I.V.F. performed the thermostimulation experiments and imaging; I.V.F., A.A.L., D.K. and A.B.F. contributed to the quantum thermometry experiments; D.A.S.-B. provided the expertise in IR laser photonics; I.V.K. contributed to the genetic constructs design and creation; Y.A.B. contributed to the neuronal culture preparation; D.S.B. and A.G.S. maintained and transfected zebrafish; M.R. and E.S.N. performed electrophysiology and imaging; Y.G.E., A.A.L., I.V.F., I.V.K., E.S.N., P.M.B., A.M.Z. and V.V.B. analysed and discussed the data.

## Additional information

**Supplementary Information** accompanies this paper at <http://www.nature.com/naturecommunications>

**Competing interests:** The authors declare no competing financial interests.

**Reprints and permission** information is available online at <http://npg.nature.com/reprintsandpermissions/>

**How to cite this article:** Ermakova, Y. G. *et al.* Thermogenetic neurostimulation with single-cell resolution. *Nat. Commun.* **8**, 15362 doi: 10.1038/ncomms15362 (2017).

**Publisher's note:** Springer Nature remains neutral with regard to jurisdictional claims in published maps and institutional affiliations.



This work is licensed under a Creative Commons Attribution 4.0 International License. The images or other third party material in this article are included in the article's Creative Commons license, unless indicated otherwise in the credit line; if the material is not included under the Creative Commons license, users will need to obtain permission from the license holder to reproduce the material. To view a copy of this license, visit <http://creativecommons.org/licenses/by/4.0/>

© The Author(s) 2017