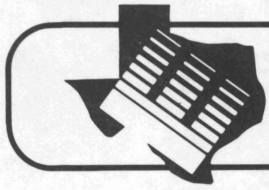


6-11-85
L-2130
5m haw



Texas Agricultural Extension Service

People Helping People

Lo\$\$ Control



Data Sheet

- Design for Productivity
- Safety Engineering
- Risk Management
- Occupational Health
- Product Safety
- Work Methods

Agricultural Hand Signals

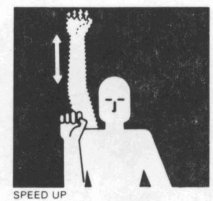
Gary S. Nelson

Extension Agricultural Engineer-Safety

Voice communications are impossible in certain agricultural situations due to distance and noise. For this reason, standard Agricultural Hand Signals have been developed for farm machinery operators by the American Society of Agricultural Engineers.

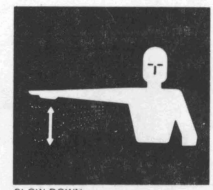
Hand signals can prevent accidents and save time. Use them and teach others to use them. Learning this new "language" will give you an easy and effective way to communicate when working around or with machinery.

Speed It Up — Increase Speed. Raise hand to shoulder, fist closed. Thrust fist upward to full extent of arm and back to shoulder rapidly several times.



SPEED UP

Slow It Down — Decrease Speed. Extend arm horizontally sideward, palm down, and wave arm downward 45° minimum several times, keeping arm straight. Don't move arm above horizontal.



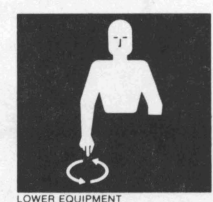
SLOW DOWN

Raise Equipment. Point upward with forefinger, while making a circle at head level with your hand.



RAISE EQUIPMENT

Lower Equipment. Point toward the ground with forefinger of one hand, while moving the hand in circular motion.



LOWER EQUIPMENT

This Far To Go. Put hands in front of face, palms facing each other. Move hands together or farther apart to indicate how far to go.

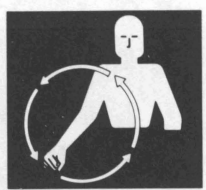


THIS FAR TO GO

Stop. Raise hand upward, arm fully extended, palm to the front. Hold that position until the signal is understood.

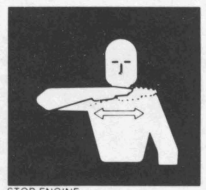


STOP



START ENGINE

Start the Engine. Move arm in a circle at waist level, as though you were cranking an engine.



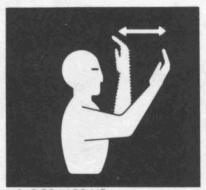
STOP ENGINE

Stop The Engine. Move your right arm across your neck from left to right in a "throat-cutting" motion.



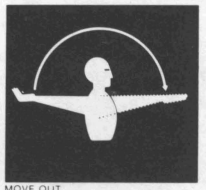
COME TO ME

Come To Me. (May mean "Come help me" in an emergency.) Raise arm vertically overhead, palm to the front, and rotate in large horizontal circles.



MOVE TOWARD ME

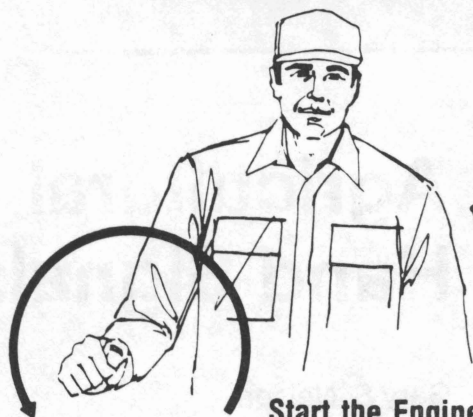
Move Toward Me — Follow Me. Look toward person or vehicle you want moved. Hold one hand in front of you, palm facing you, and move your forearm back and forth.



MOVE OUT

Move Out — Take Off. Face desired direction of movement. Extend arm straight out behind you, then swing it overhead and forward until it's straight out in front of you with palm down.

Agricultural Hand Signals



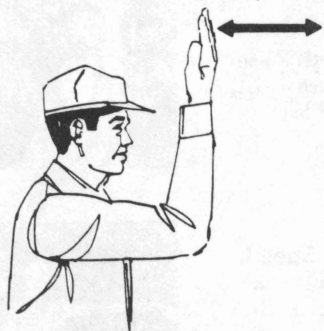
Start the Engine
(Arranque el motor)



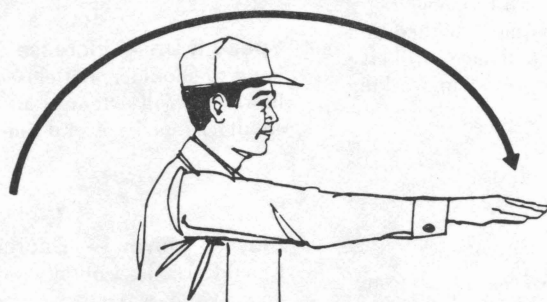
Stop The Engine
(Apague el motor)



Come To Me
(Venga hacia mí)



**Move Toward Me —
Follow Me**
(Muévase hacia mí - Sígame)



Move Out — Take Off
(Salga - Parta)



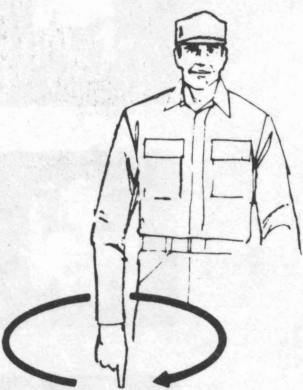
Speed It Up
(Aumente la velocidad)



Slow It Down
(Disminuya la velocidad)



Raise Equipment
(Levante el equipo)



Lower Equipment
(Baje el equipo)



This Far To Go
(Falta esta distancia)



Stop
(Alto)

Educational programs conducted by the Texas Agricultural Extension Service serve people of all ages regardless of socioeconomic level, race, color, sex, religion, handicap or national origin.

Issued in furtherance of Cooperative Extension Work in Agriculture and Home Economics, Acts of Congress of May 8, 1914, as amended, and June 30, 1914, in cooperation with the United States Department of Agriculture. Zerle L. Carpenter, Director, Texas Agricultural Extension Service, The Texas A&M University System.