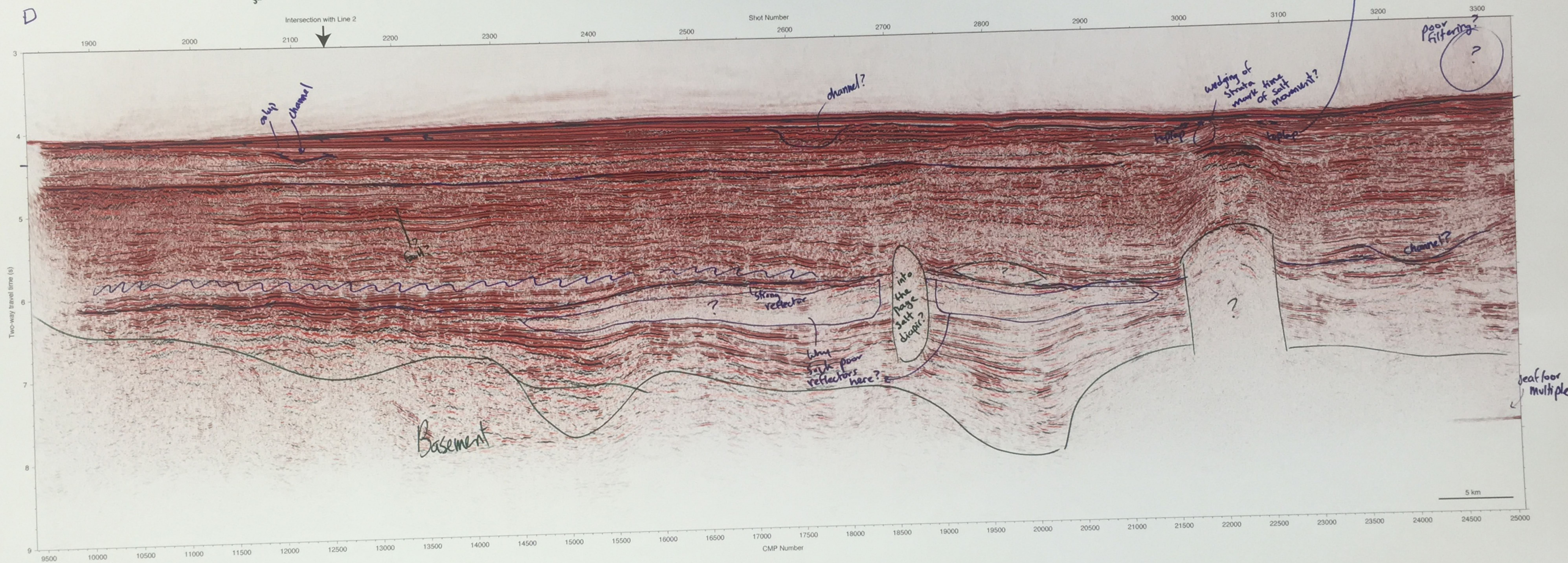


Current Sediment Source
⊙

* Faults are indicated by lateral terminations of Seis. reflectors



channel?

channel?

wedging of strata mark of salt movement?

unconformity?

poor filtering?

into the page salt diapir?

why such poor reflectors here?

strong reflector

channel?

sea floor multiple

D

C

Intersection with Line 2

