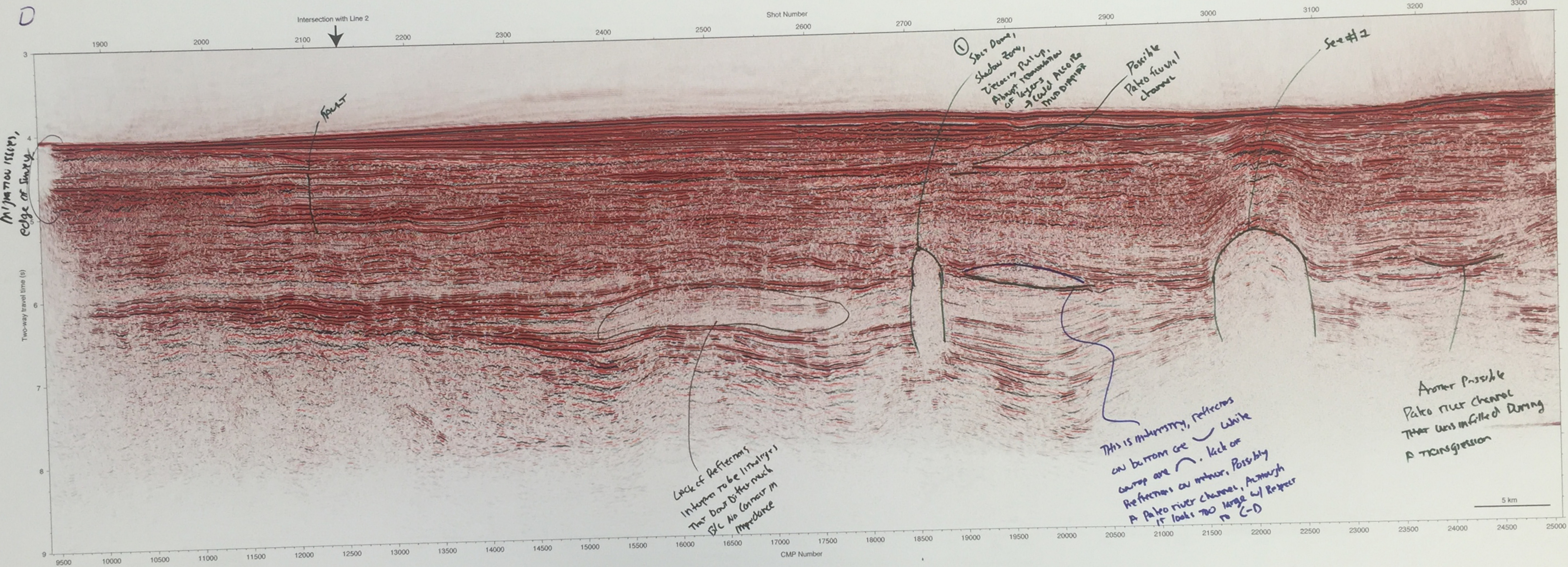


D



Intersection with Line 2

Fault

① Sub-Dome,
Shadow Zone,
Tertiary Pull-up,
Along termination
of layers
→ could also be
mud-dipping

Possible Pato river channel

See #12

Lack of Reflections
Interpret to be 11m thick
But don't differ much
SLC No contrast in
Impedance

This is minor, reflections
on bottom are white
carap are. Kick off
Reflections on minor, possibly
A Pato river channel, although
it looks too large w/ respect
to C-D

Another possible
Pato river channel
that was infilled during
a transgression

Davin