

MAKING A DAIRY BLANKET

Extension Dairy Specialists
Texas A&M University

A blanket is necessary in the proper fitting of a dairy animal. An animal, properly blanketed, needs very little clipping prior to show time and the hide and hair will be in good condition. Detailed information on the complete fitting job is given in MP-503 *Fitting and Showing Dairy Heifers*.

Blankets may be purchased or they may be made at home. Here are the steps in making a duck blanket.

1. Measure the animal along the top line from just in front of the withers to a point even with the pin bones. Add 6 inches for calves and 10 inches for cows to allow for that part of the

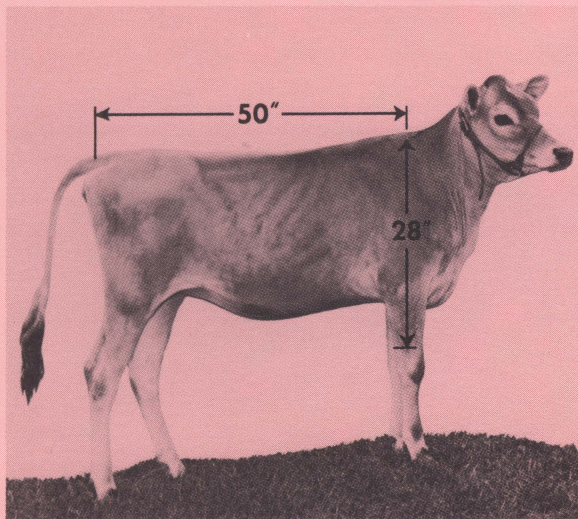


Figure 1.

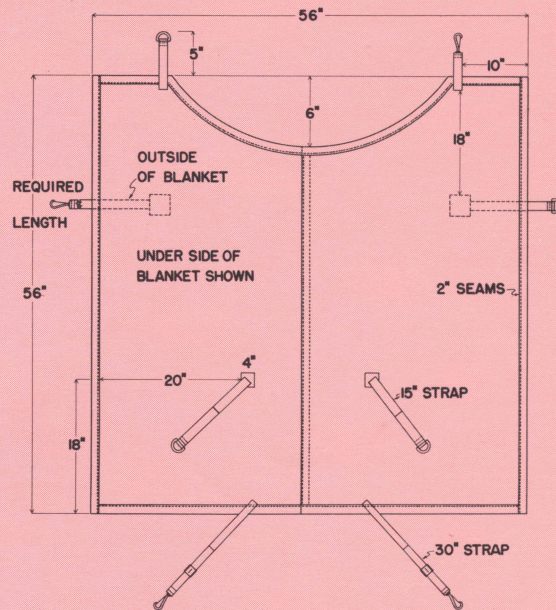


Figure 2.

blanket extending to cover the shoulder points (see figure 2) plus an additional 4 inches for 2 seams.

2. Measure from the top of the shoulders to a point on the front legs about 2 inches below the chest floor. Allow about 2 inches extra for folding over one seam.

3. Sew the two pieces together so that the seam runs down the middle of the back. Example: If the top line measurement is 50 inches plus 6 inches for a heifer plus 4 inches for seams and

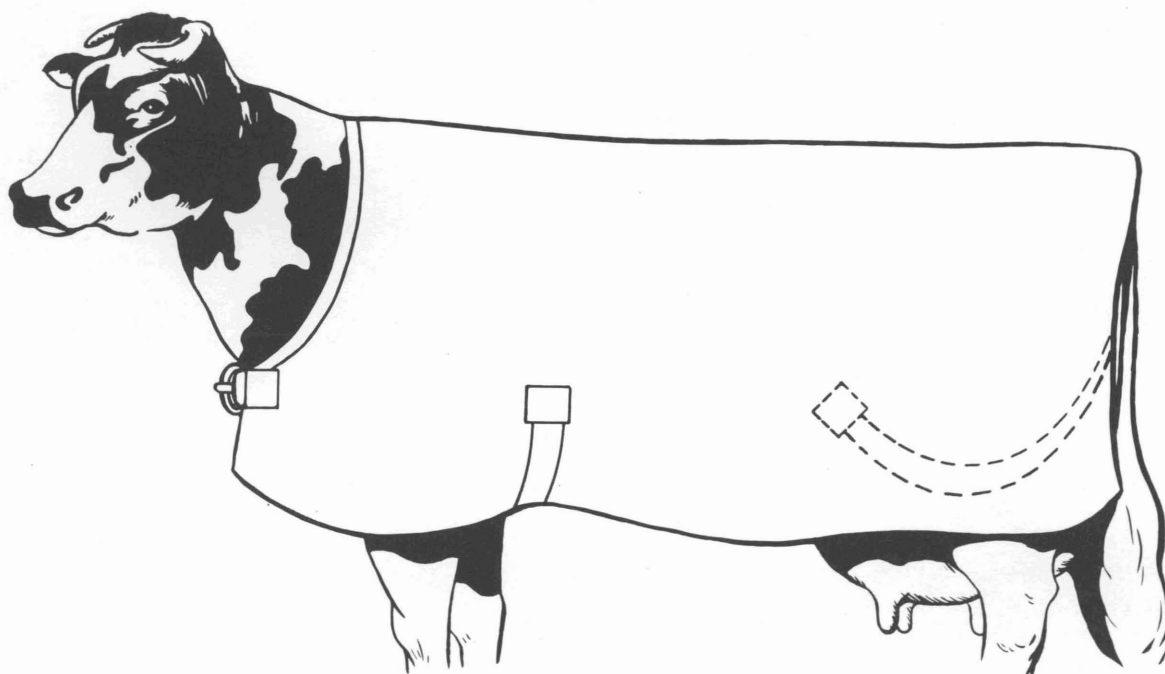


Figure 3.

the shoulder-chest measurement is 28 inches plus 2 inches for seam, two pieces of duck 30 x 60 inches are needed.

4. Cut out the rounding front as illustrated and then sew a 2-inch seam around the entire blanket. All seams should be on the underside.

5. Measure off places for attaching the straps as shown in figure 2. The distances may have to be reduced for small animals or increased for larger animals. Throwing the blanket over the animal helps to check the location of these straps.

6. Cut four pieces of ducking about 4 inches square for reinforcing the blanket where the inside leg straps and chest straps are to be attached.

Sew the leg straps on the inside of blanket and the chest straps on the outside.

7. Make straps from ducking by cutting strips about 4 inches wide and the lengths as needed. Fold them first so that the edges touch in the middle, then over again to cover the cut edges. Sew along the side to hold the edges together and then sew one end to the blanket at the reinforced location.

8. Rings and snaps may be used on the ends of the straps, or one strap may be made longer with a ring on the short strap and a saddle tie used to tie the blanket on. When the blanket is on the animal, the front straps fasten under the neck and under the chest floor and the leg straps under each rear flank. (figure 3.)