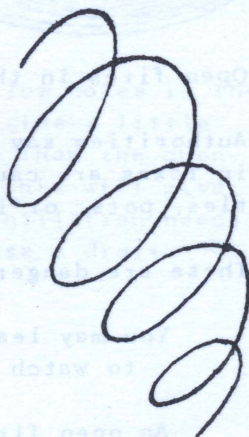


PROTECT YOUR FARMSTEAD FROM

FIRE



Issued By
The Extension Service
Agricultural and Mechanical College of Texas and
The United States Department of Agriculture
Ide P. Trotter, Director, College Station, Texas

PROTECT YOUR FARMSTEAD FROM FIRE

By

Bernice Claytor
Extension Specialist in Home Management
Texas A. & M. College

Open fires in the yard are dangerous.

Authorities say many losses of life and property in Texas are caused by open fires under wash kettles, pots, or in burning trash.

These are dangerous because

You may leave for a few minutes and fail to watch the fire.

An open fire may spread to dry grass or weeds nearby and soon be beyond control.

Your clothing may catch fire as you work.

Children playing near may fall into the fire.

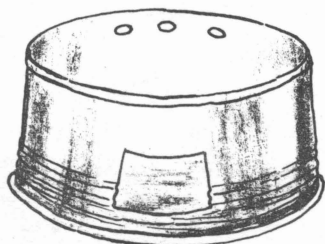
Guard and control open fires.

Build a brick, concrete or stone furnace.

Use sheet metal or an old galvanized wash tub to surround the fire.

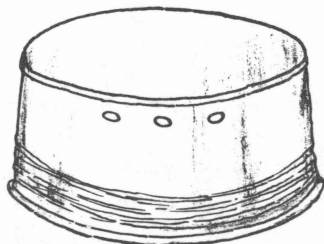
The galvanized tub can be fixed like this:

I. One Side



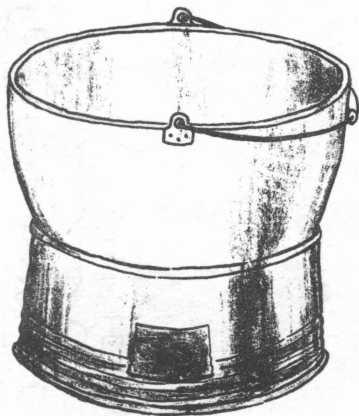
Cut out the bottom of the tub. Cut an opening in one side.

II. The Other Side



Cut a few holes in the other side a little higher than the opening. This will give the ventilation needed to cause a draft.

III. In Use



The fire is made in the tub, and the wash kettle set in the opening. A grate could be placed over the opening for other uses.

Building a furnace or enclosing a fire will:

Keep it from spreading.

Save fuel.

Protect children.

Keep smoke and soot from blowing into the clothes you're washing.

Keep your own clothing from blowing into the fire.

Allow you to work closer to the kettle in more comfort.

