

Time and Work Savers

TWO-ROW DISTRIBUTOR FOR COMMERCIAL FERTILIZER

A two-row, horse drawn fertilizer distributor has been converted from a one-row planter by the Texas Agricultural Experiment Station. This machine may be used for putting down commercial fertilizer in lister furrows in advance of rebedding land or for sidedressing row crops.

A shaft through the hopper has agitator fingers on it over each of the picker wheels that revolve in the bottom of the hopper. A shaft below the hopper bottom has two picker wheels from a cotton planter on it. An adjustable sheet iron slide controls the size of the slot in which each picker wheel runs in the hopper bottom to regulate the flow of the fertilizer.

The in-and-out-of gear mechanism is from a cotton planter. The agitator shaft is driven from the picker wheel shaft as shown in Fig. (4). A water tight lid is used over the hopper box to keep the fertilizer dry.

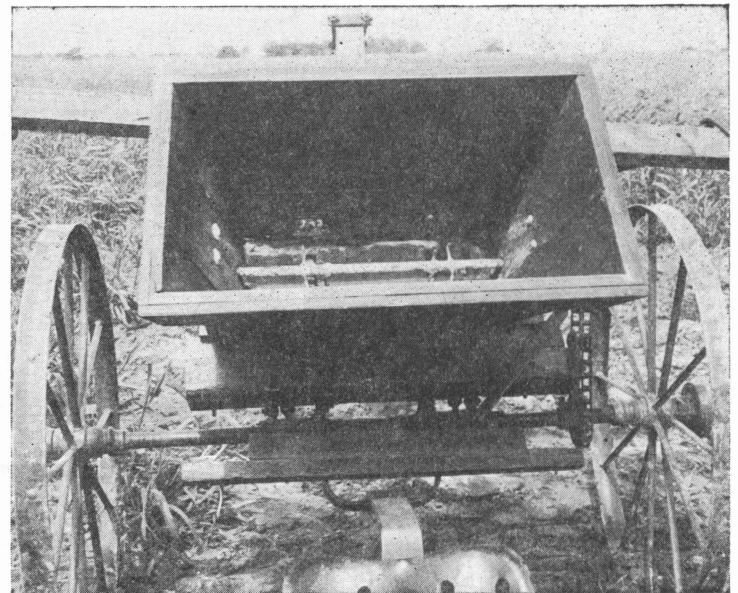


Fig. 1. View of distributor showing picker wheel drive. Handle at driver's feet is to operate in-and-out-of gear mechanism.

Fig. 2. Top view of distributor showing hopper, agitator shaft and fingers, and picker wheels in slots under the agitator fingers.

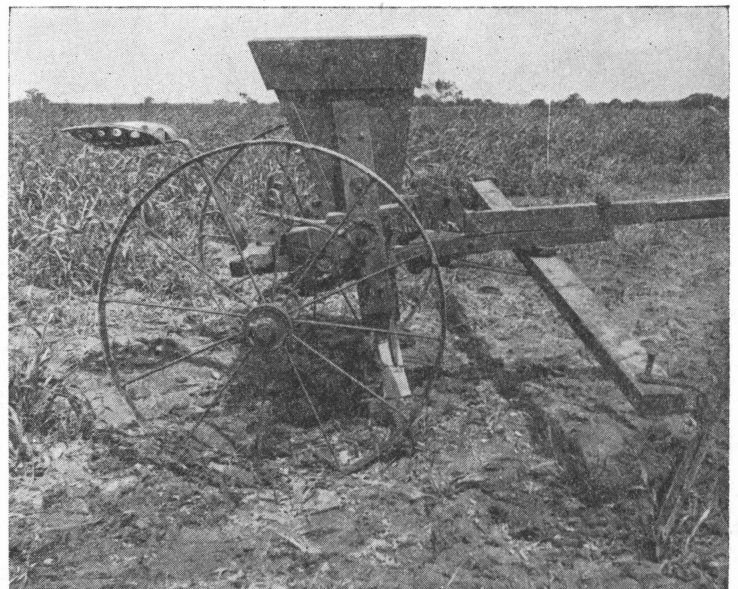
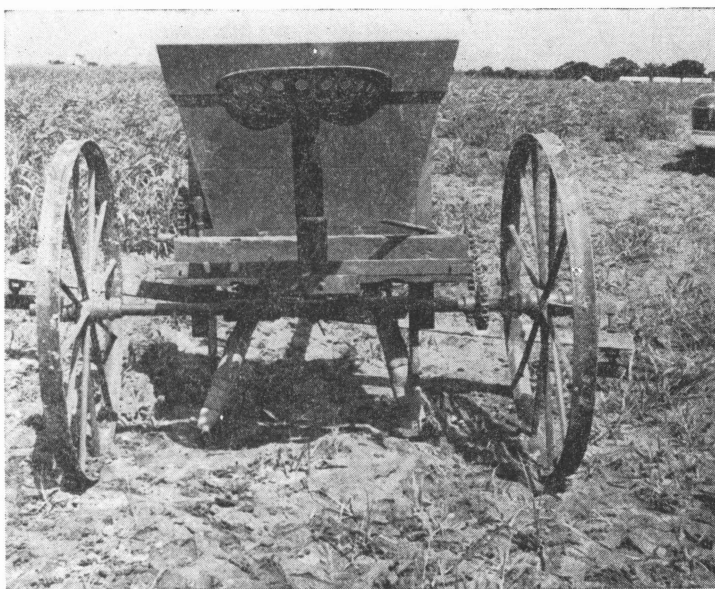


Fig. 3. Rear view of distributor showing fertilizer tubes and supports and the driving mechanism for agitator and picker wheels.

Fig. 4. View of distributor showing agitator drive.