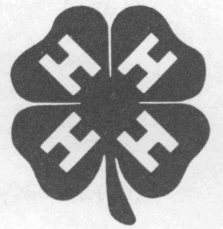


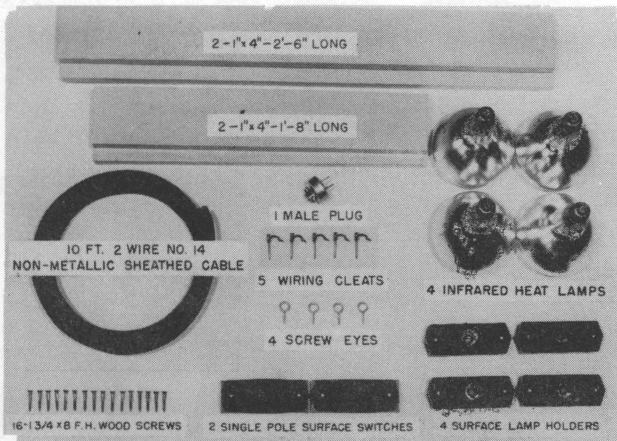
Mrs. Dot Hallam

BUILDING AN INFRARED BROODER FOR 250 TO 330 CHICKS



*Price Hobgood, Professor, Agricultural Engineering Department
 B. C. Wormeli, Extension Poultry Husbandman
 W. L. Ulich, Extension Agricultural Engineer
 Texas A. & M. College System*

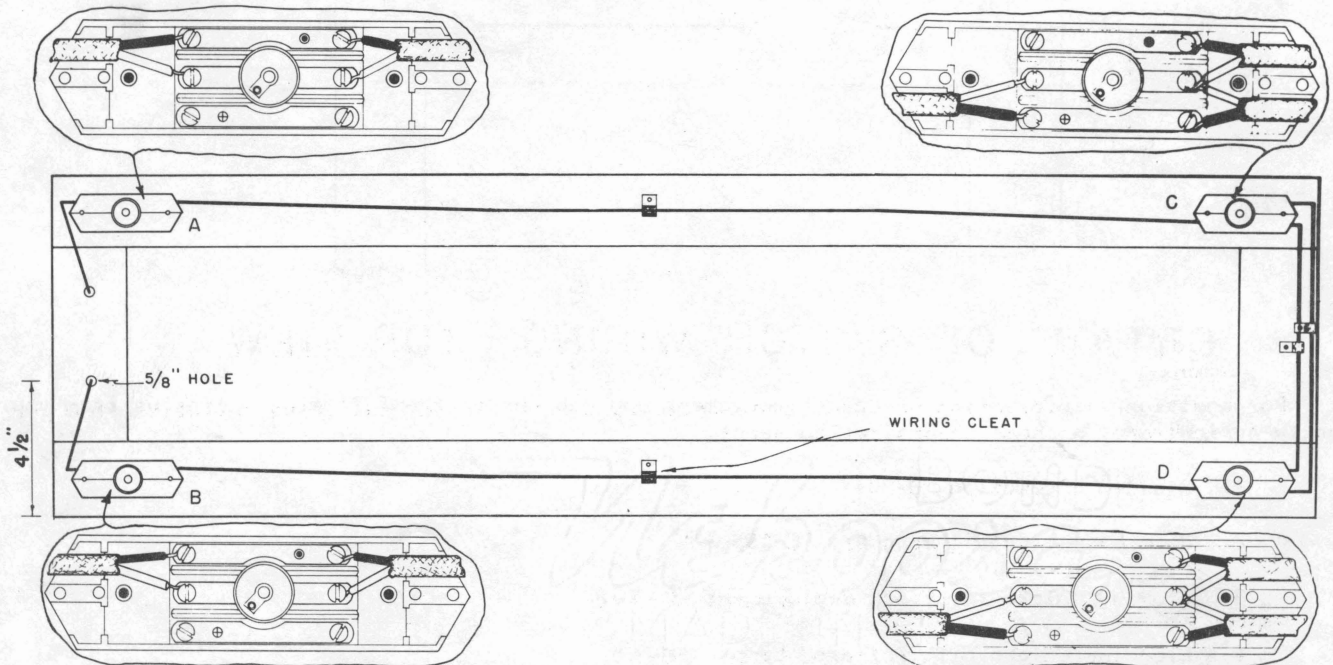
THE MATERIALS



WHAT TO DO

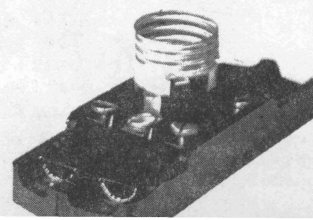
1. Fasten the four pieces of 1 x 4 together to form a rectangle. Use four 1 1/4 x 8 flat head wood screws at each corner.
2. Drill two 5/8" holes for the wire to go through as shown in the "detail of lamp holder wiring" diagram.
3. Remove the covers and install lamp holders A, B, C, and D with the two screws which you find inside the cover.

Add enough non-metallic sheathed cable to reach from brooder to power source.

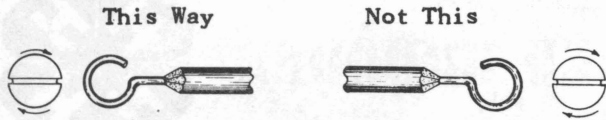


DETAIL OF LAMP HOLDER WIRING — BOTTOM VIEW OF BROODER

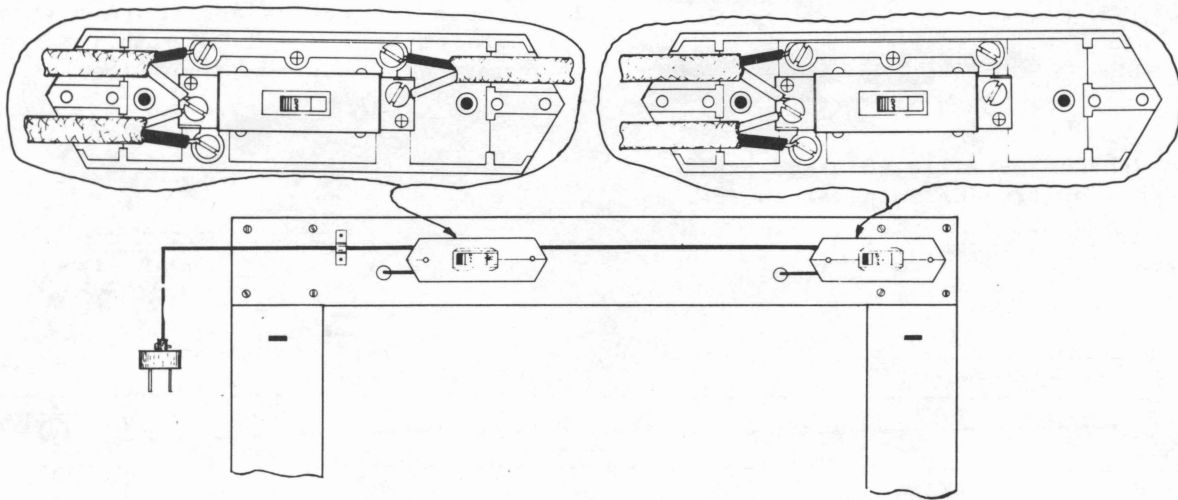
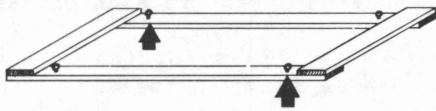
4. Check the "detail of lamp holder wiring" diagram to determine which side of the holder the wire enters and break the knockouts in base and cover.



5. Install the wire - Fasten wire to terminals -



6. Install wiring cleats.
7. Replace lamp holder covers.
8. Turn the brooder over and pull the wire through the holes which you drilled.
9. Remove the covers and install the switches as shown in "detail of switch wiring" diagram.
10. Cut extension cord long enough to reach the power source and attach male plug.
11. Install a screw eye at each of the four corners of the brooder.



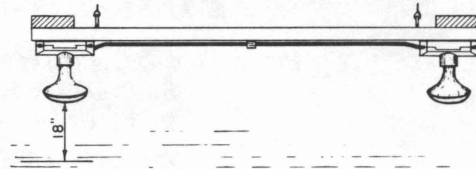
DETAIL OF SWITCH WIRING - TOP VIEW

For additional information on chick management you can obtain the following bulletins from your county agricultural or home demonstration agent.

1. Broiler Production B-204
2. Home Made Electric Brooders C-195
3. Growing Chicks for Flock Replacement C-298
4. Brooding Chicks With Infrared Lamps 4H-65

Issued by
 The Agricultural Extension Service
 The Texas A. & M. College System and
 The United States Department of Agriculture
 G. G. Gibson, Director, College Station, Texas

12. Suspend the brooder from the ceiling by fastening wire or small chains to the screw eyes in the brooder and hooks in the ceiling.
13. Install the lamps and adjust the brooder height so that the bottoms of the lamps are 18" above the floor or litter.



14. Plug the brooder into a 115 volt power source and it is ready to operate.

