

305

III
A
UK

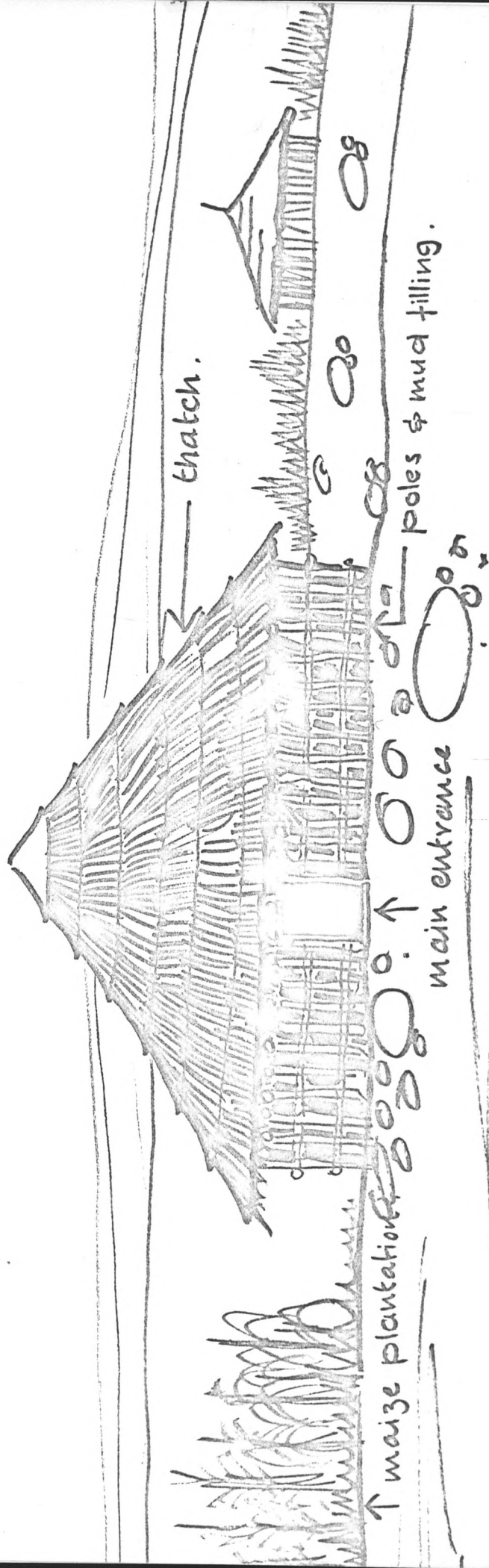
KENYAN HOUSING STUDIES:

By Sashi Patel

FREDERICK C. CUNY & ASSOCIATES
INTERTECT

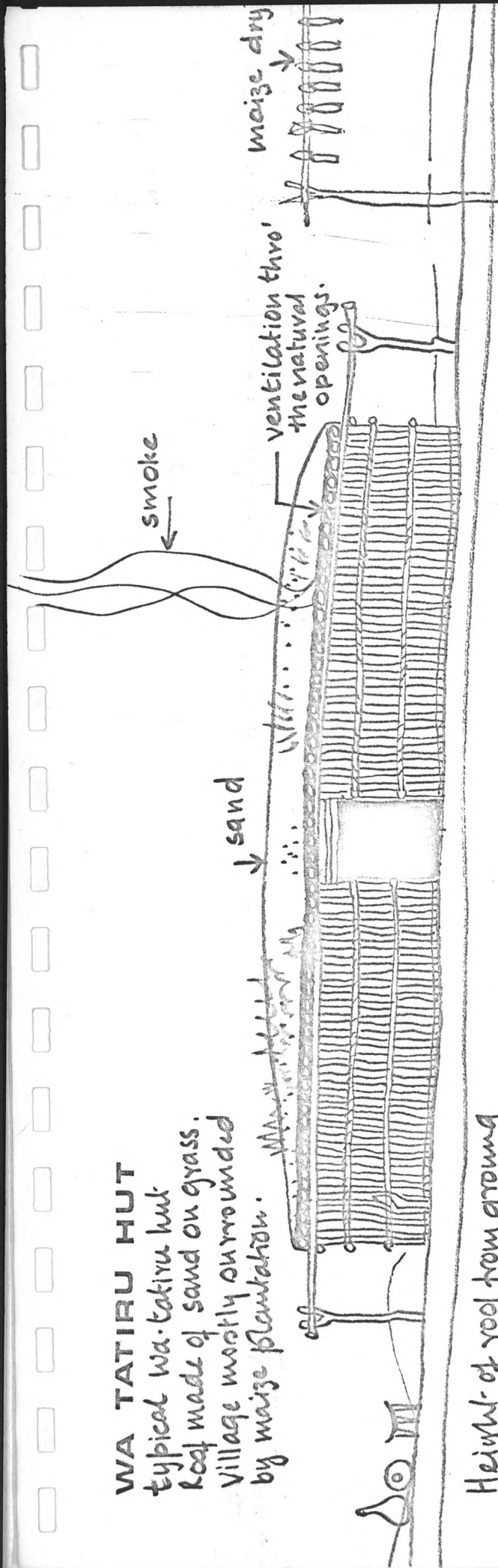
WA SUKUMA HUT

south of handajega settlement
village layout on plains no hills near by.
Village surrounded by small 'nambas'
meize plantations.

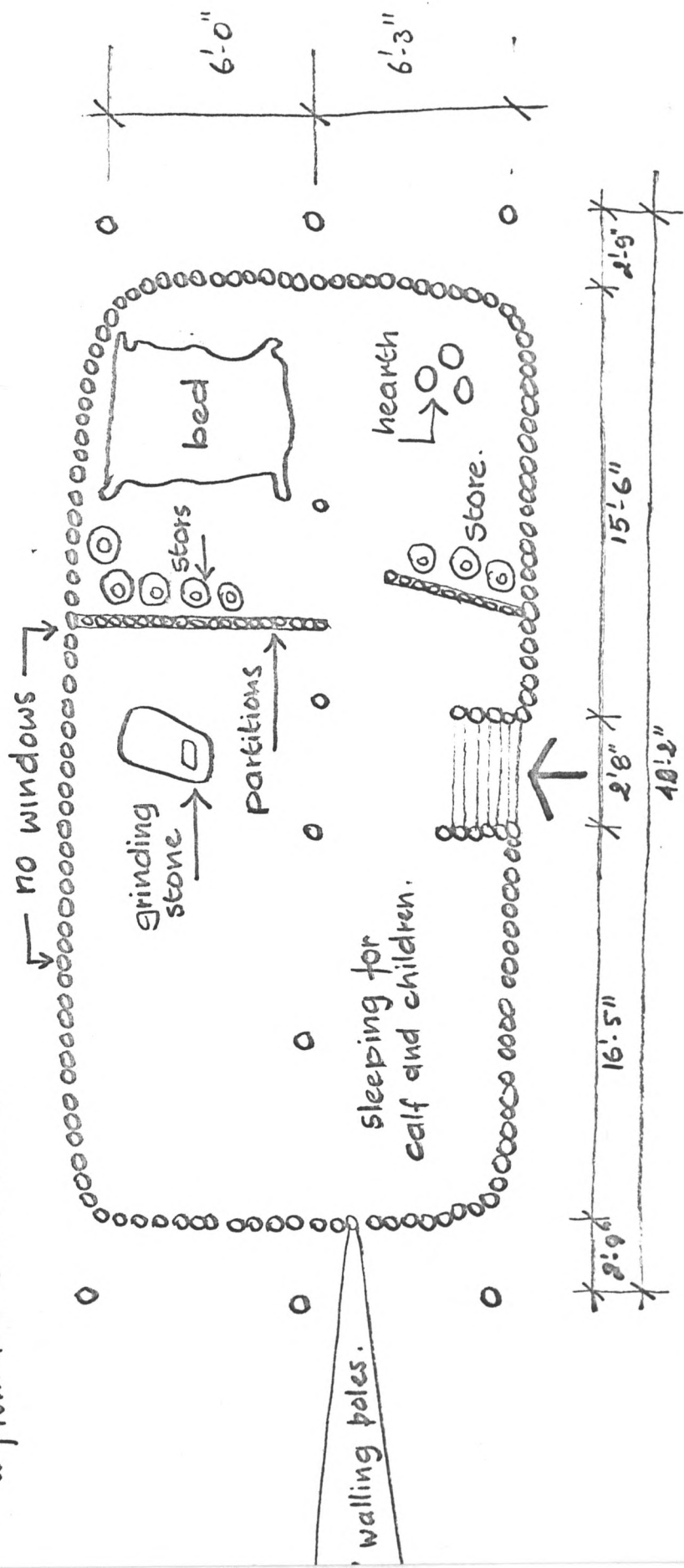


WA TATIRU HUT

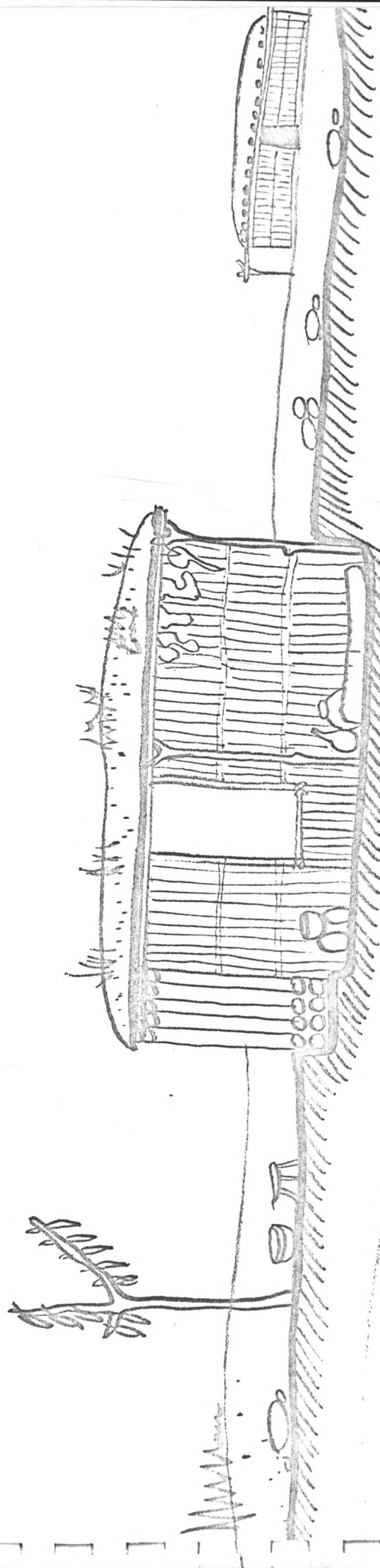
typical wa-tatiru hut
 roof made of sand on grass.
 Village mostly surrounded
 by maize plantation.



Height of roof from ground
 is from 4'6" to 5'0" max.



WA TATIRU HUT

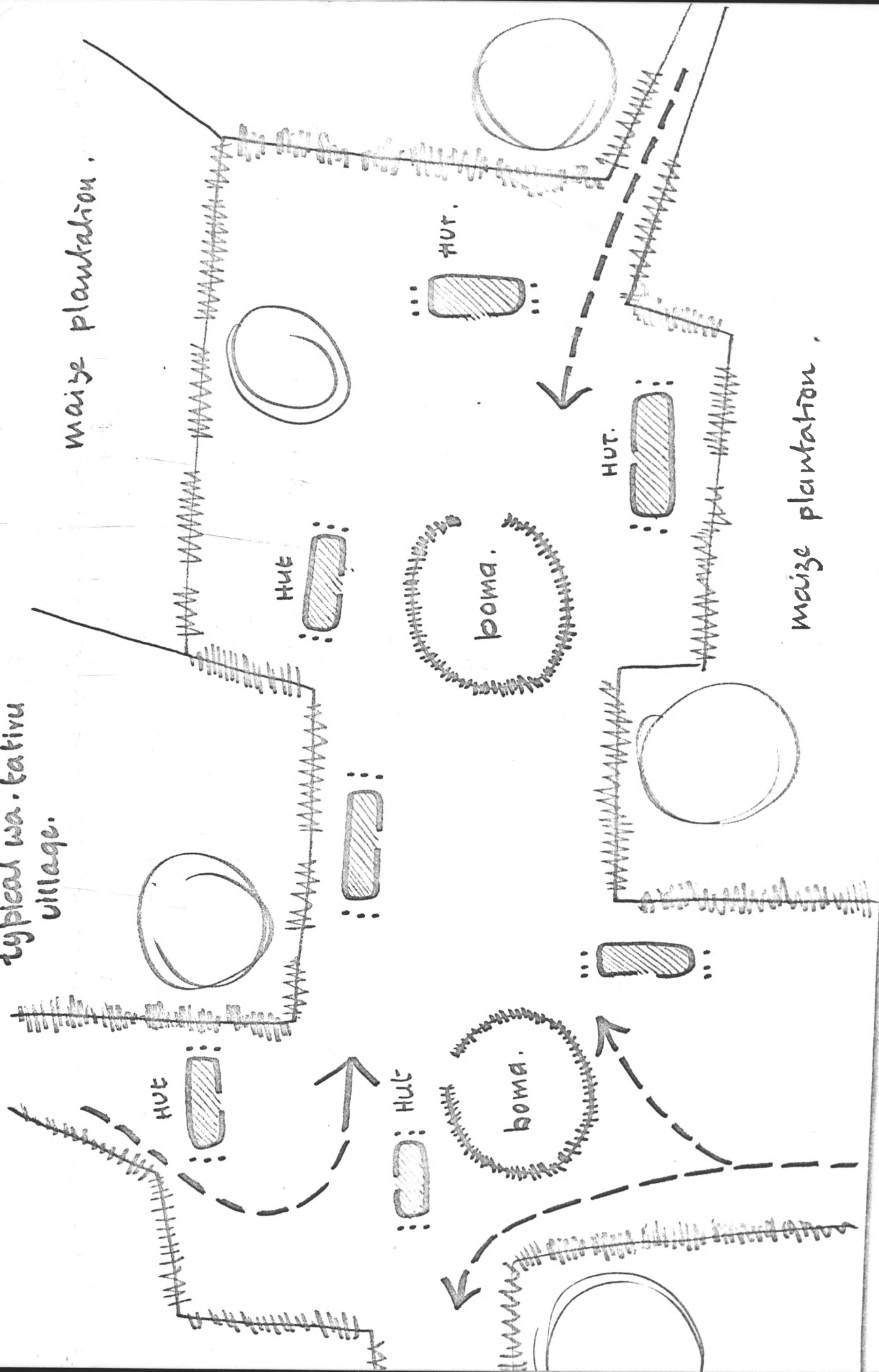


Section thro' wa tatiru hut.



ISHANI VILLAGE

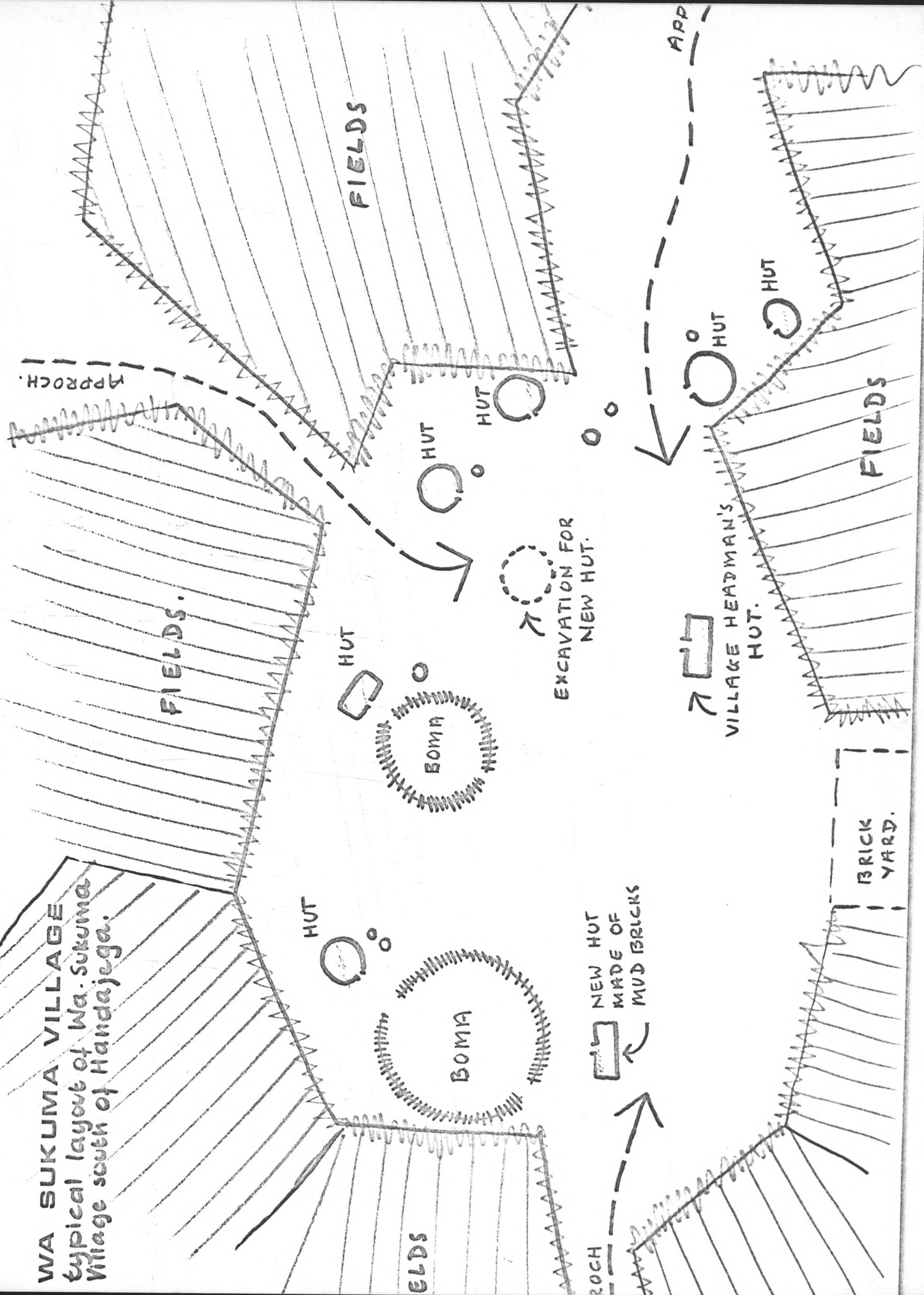
typical wa-kativu
village.



maize plantation.

maize plantation.

WA SUKUMA VILLAGE
typical layout of Wa-Sukuma
Village south of Handajega.



FIELDS

FIELDS.

APPROACH.

HUT

HUT

HUT

BOMIA

EXCAVATION FOR
NEW HUT.

VILLAGE HEADMAN'S
HUT.

FIELDS

HUT

HUT

HUT

BOMIA

NEW HUT
MADE OF
MUD BRICKS

BRICK
YARD.

ELDS

ROCK

APP

MATANGO VILLAGE
WA SUKUMA

vi s v c

fields

fields

fields.

