

WHEN HAIL BREAKS LOOSE

KEEPING SUSTAINABILITY A PRIORITY WHEN DISASTER HITS



MARCH 23, 2016; 12 A.M.

A small thunderstorm moved in from the west dumping pea-to-marble sized hail on Wylie.

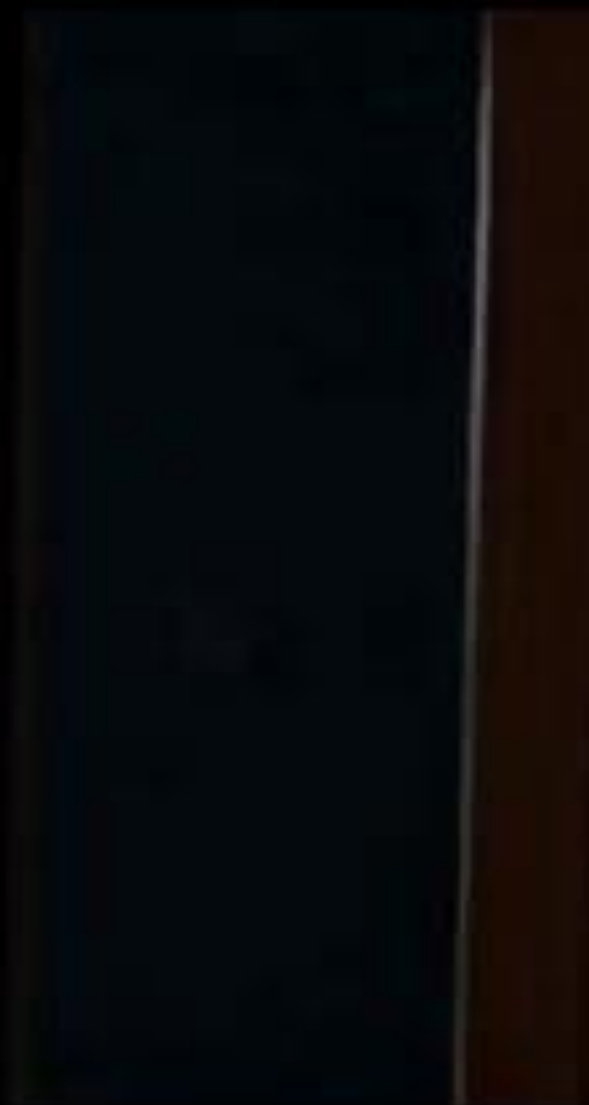
Initial insurance findings indicated that all but two of the District's 25 buildings sustained mild to moderate damage to their roofs and HVAC Systems.

While the insurance adjusters were still in the district assessing the scope of damage to the district's property

Mother Nature paid us another visit.....

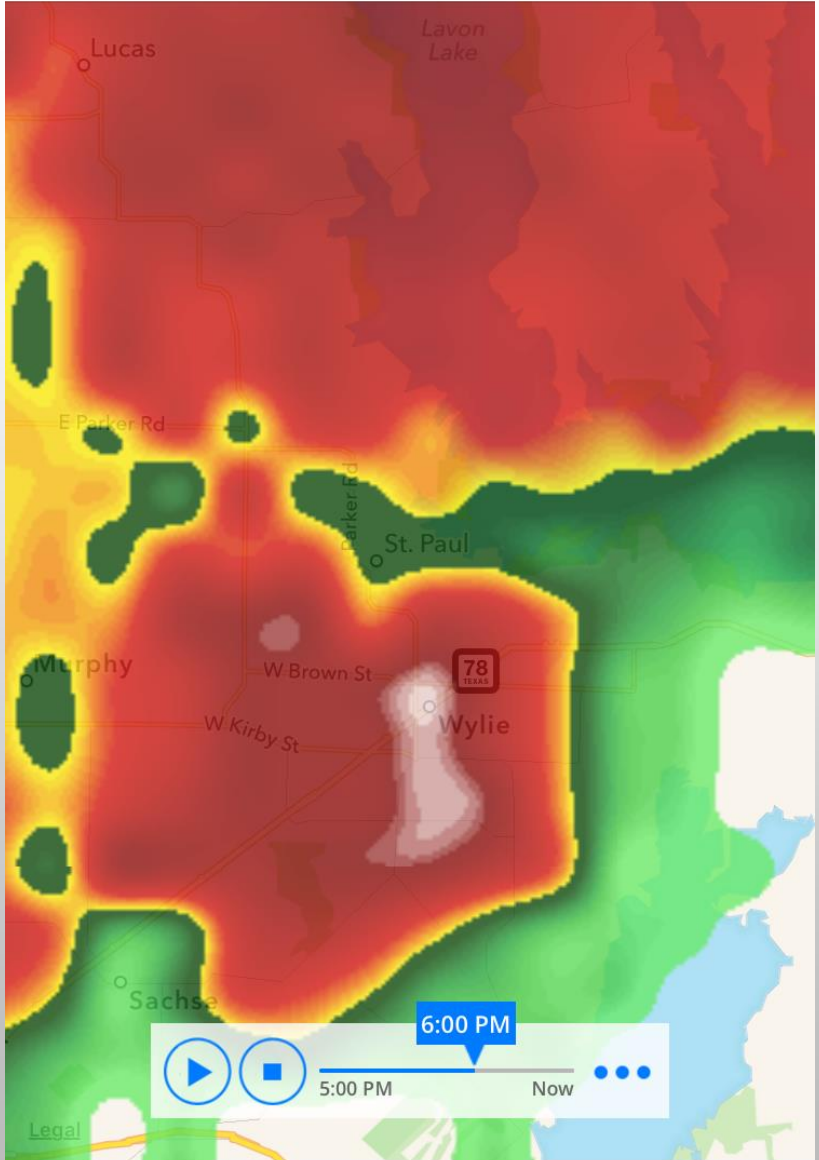
APRIL 11, 2016; 6:00 P.M.



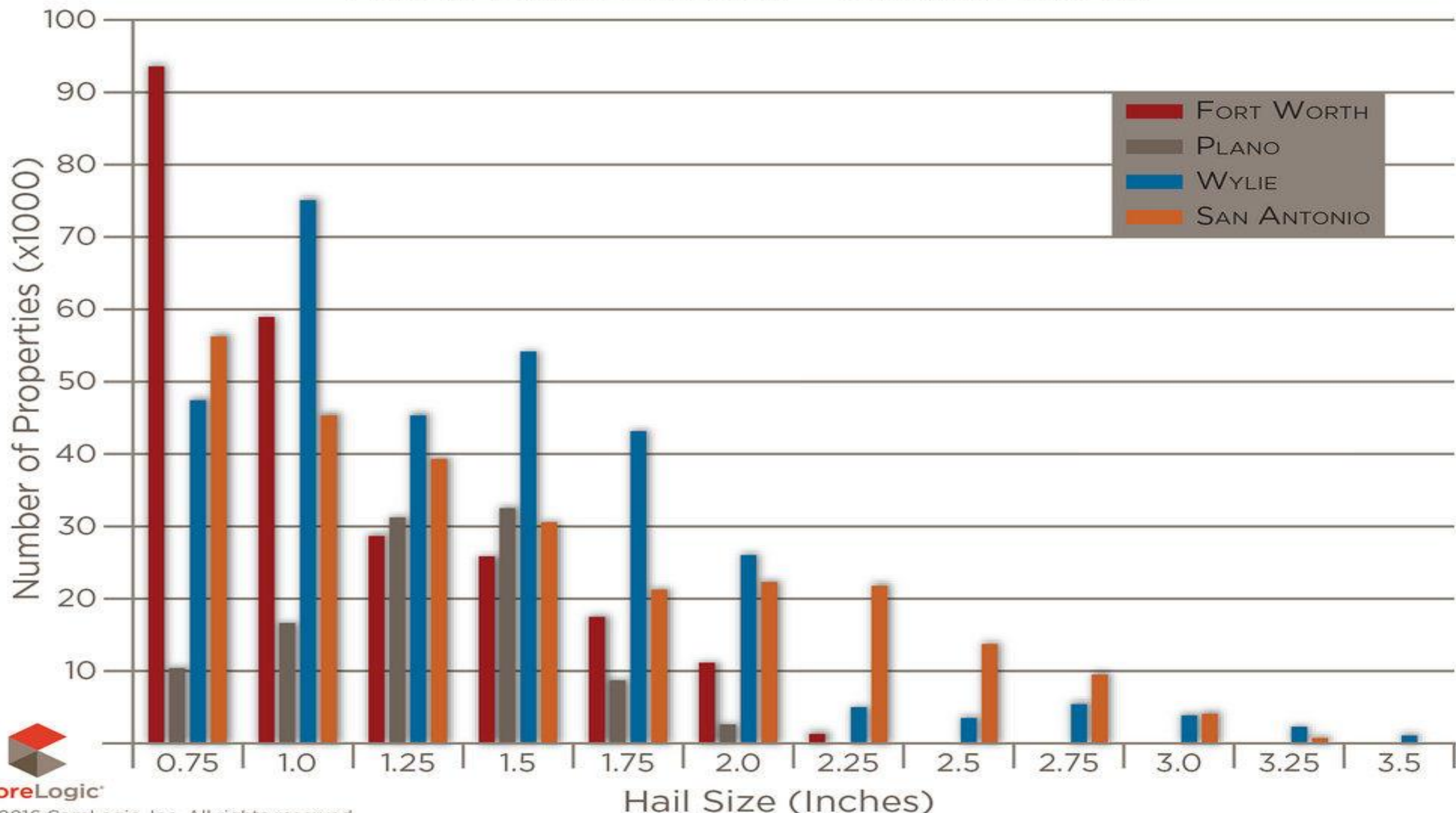




Rain | Mix | Snow



TEXAS HAIL EVENTS - SPRING 2016



86

04/11/2016 HAIL REPORTS

4.25

LARGEST HAIL 04/11/2016

178

HAIL REPORTS APRIL 2016





IMMEDIATE IMPACT ON THE SCHOOL DISTRICT

- Unique in that this impacted all 20 campuses district-wide
- Closed district for one day to recuperate/assess
- Boarded broken windows, removed wet ceiling tile, dried out walls and carpets. Demolition of walls, cove base and carpet at some locations
- Began remediation – outsourced most heavily damaged buildings
- Patched roofs/began temporary roof installation
- Knocked out broken glass in vehicles
- Mobilized second damage assessment with insurance adjusters





04.12.2016



04.12.2016



04.12.2016



04.12.2016









The Number of ONE

04.12.2016



04.12.2016

IMPACT ON OUR COMMUNITY AND BUSINESS

- Eighty percent (80%) of the 15,000 homes in Wylie sustained damage ranging from moderate to severe
- Families were displaced as far away as Ft. Worth because hotels were full
- Businesses had to move into temporary locations or close up shop while they waited for repairs to be made
- Many people had to search outside of the DFW Metroplex to find rental vehicles
- Operating school was a necessity to restore order/normalcy



















WHAT ELSE WAS GOING ON?

- \$94.2 Million Bond Construction/Renovations
 - In its second year
 - On an accelerated pace
- Many local contractors were also impacted by the storm
- Regular and Preventative Maintenance Work
- Facility use and school events
- Departure of department leader on April 9, 2016

GOAL TO ACTION PLAN

- Administration set **immediate** goals/priorities
 - GET BACK TO SCHOOL
 1. Buildings safe for opening – roof cover/glass/ceiling tiles
 2. Power-Electrical
 3. HVAC-Mechanical
 4. Network-Technology
 5. Moved out of critically damaged areas
 6. Bus utilization/traffic patterns/alternate pickups-drop-offs
 - Restoration of extracurricular activities
 - review the master scheduling to see where issues may arise

WHAT TO DO NEXT?

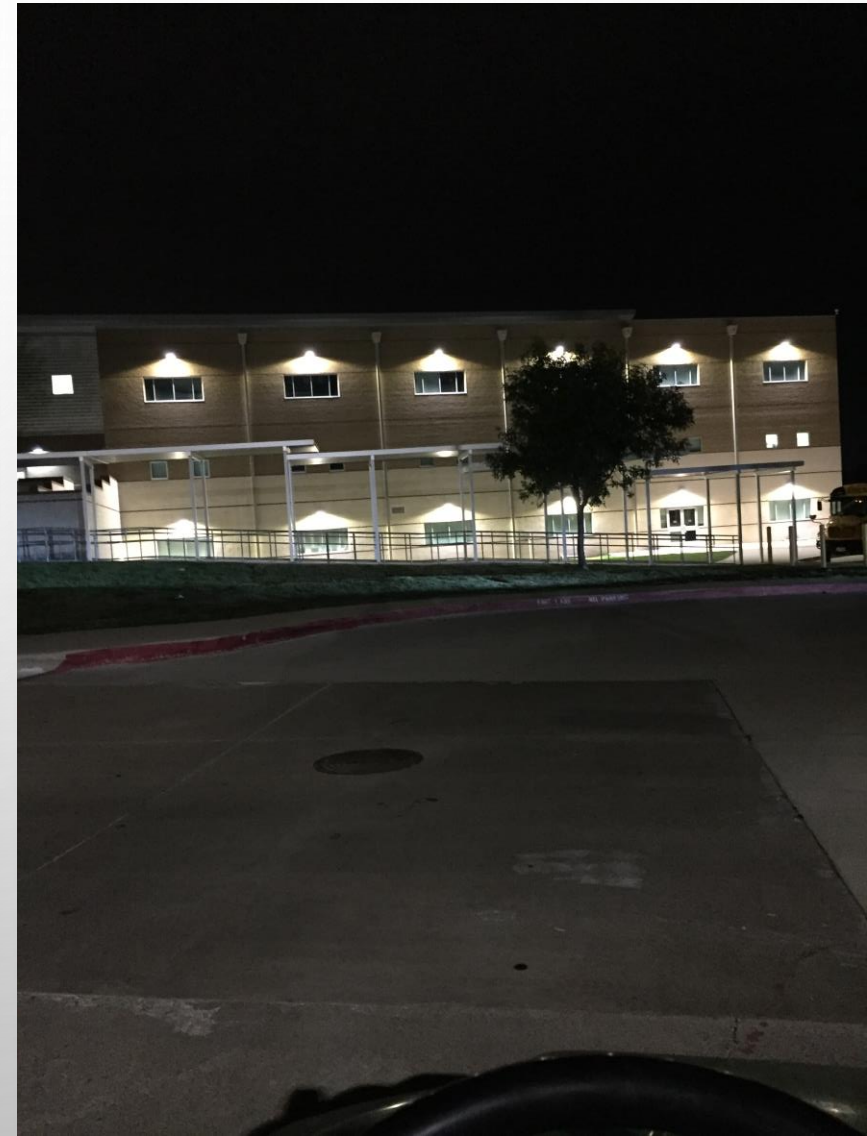
- Prioritize the Projects
 1. Insurance Claim
 2. Bond Work
 3. Builder's Risk
 4. Special Projects – in house
 5. Special Project – outsourced
- Capital Planning

How will what we do now affect tomorrow?
- Green Team-Campus Based Initiatives

Don't give up when faced with multiple challenges



LED Wall Packs at Wylie High School



LED Lighting at Wylie Stadium





Light-weight concrete overlay in roofing





New Chiller
System





WYLIE ISD GREEN TEAM



THE WYLIE WAY MODEL



- Innovative
 - Creative solutions to an unique set of opportunities
- While Difficult, very “Do-able”
 - Keeping sight of the big picture with so many moving parts
- Scope of work span the entire city and state
 - Lots of employees were dealing with this on a personal level
 - Expand your pool of resources; local contractors affected
- Met the Goals of the Leadership Team
 - Support throughout the process meant that Energy Efficiency and Sustainability would prevail

QUESTIONS?

CONTACT INFORMATION



Jennifer DuPlessis
Executive Director of Operations
jennifer.duplessis@wylieisd.net

Marcia Coker
Facilities Manager
marcia.coker@wylieisd.net