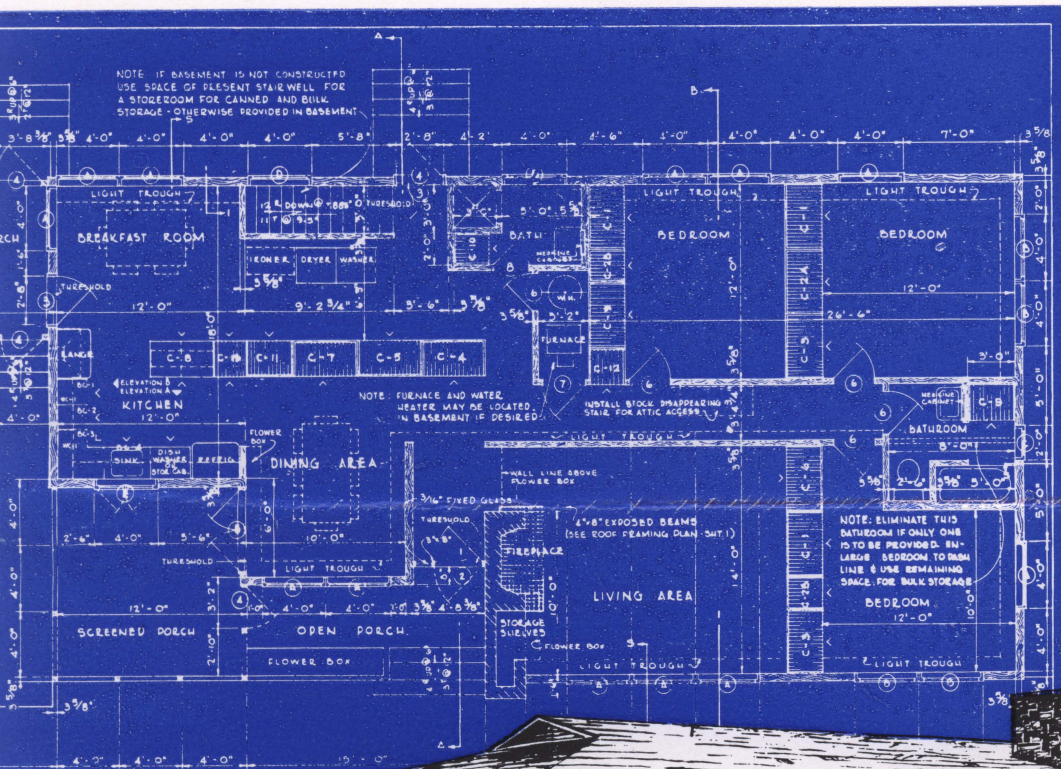
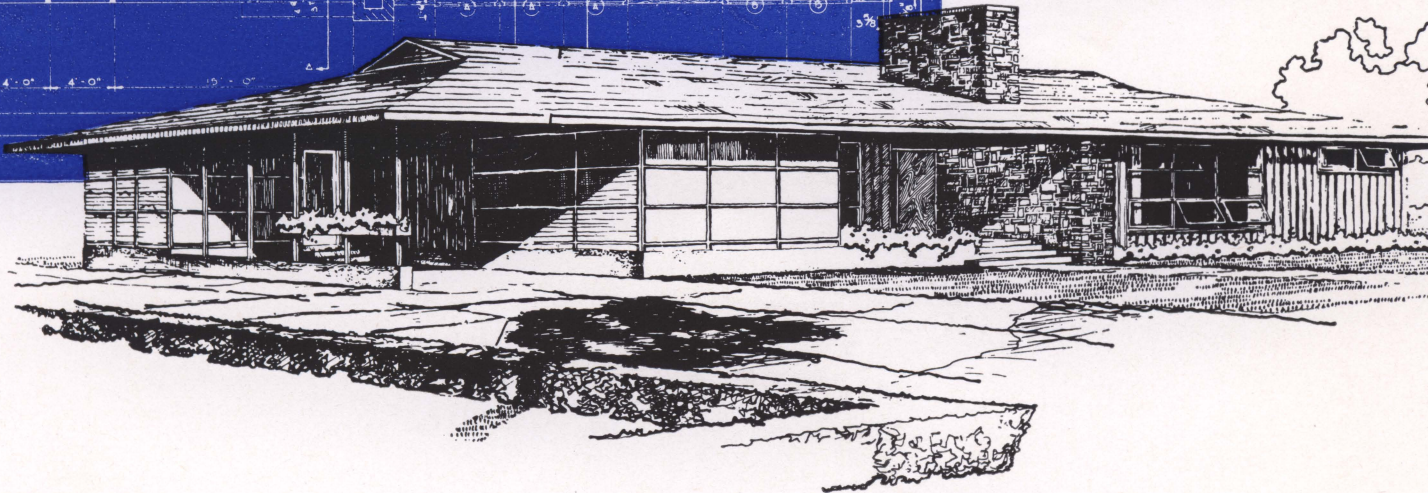


FARM and RANCH HOMES in



T EXAS



TEXAS AGRICULTURAL EXTENSION SERVICE
G. G. Gibson, Director, College Station, Texas

This bulletin lists recommended plans collected from various publications and sources. The working drawings may be ordered from your local county extension agents or from the Agricultural Information Office, Texas A. & M. College System, College Station, Texas.

The house and a section of the working drawings from plan number 7127 appear on the front cover. The floor plan and another sketch of this house are pictured on page 11.

CONTENTS

General Recommendations	4
Four-Bedroom House	5
Three-Bedroom Houses	6
Two-Bedroom Houses	13
Expansible Houses	20
Supplementary Publications	24

GENERAL RECOMMENDATIONS

Farm and Ranch Homes in Texas

W. S. ALLEN, *Extension Agricultural Engineer*

Texas A. & M. College System

PLANNING

Plans should be made well ahead of the time that building or remodeling actually begins. Careful, thoughtful planning often helps avoid mistakes which are costly from the standpoint of money as well as convenience.

The first step in planning is to determine the family's needs. The second step is to select the site. The third step is to collect information, ideas and plans that will help in preparing the needed plans. The fourth step in planning is to get the desired house plan on paper. It is much easier to make changes on paper before construction begins than afterward. Good plans help the builder interpret details correctly.

Sometimes a plan already made will meet the needs and desires of a family. The plans in this publication may be acceptable as they are, or they may offer ideas to incorporate in other plans.

SIZE

When considering the size of the house, list all activities which should be provided for and check to see if there is sufficient space for these activities. Plan for the years ahead as well as for present needs. Necessary storage also should be considered in allotting space.

MATERIALS

A wide variety of materials are suitable for most areas of Texas. Wood remains a common structural material. For this reason most of the illustrations in this book show this type of construction. Other materials, such as concrete blocks, native stone, combinations of these and other materials can be substituted for wood. Be sure that all materials are sound and of good quality. Proper workmanship in the use of these building materials is of great importance.

UTILITIES

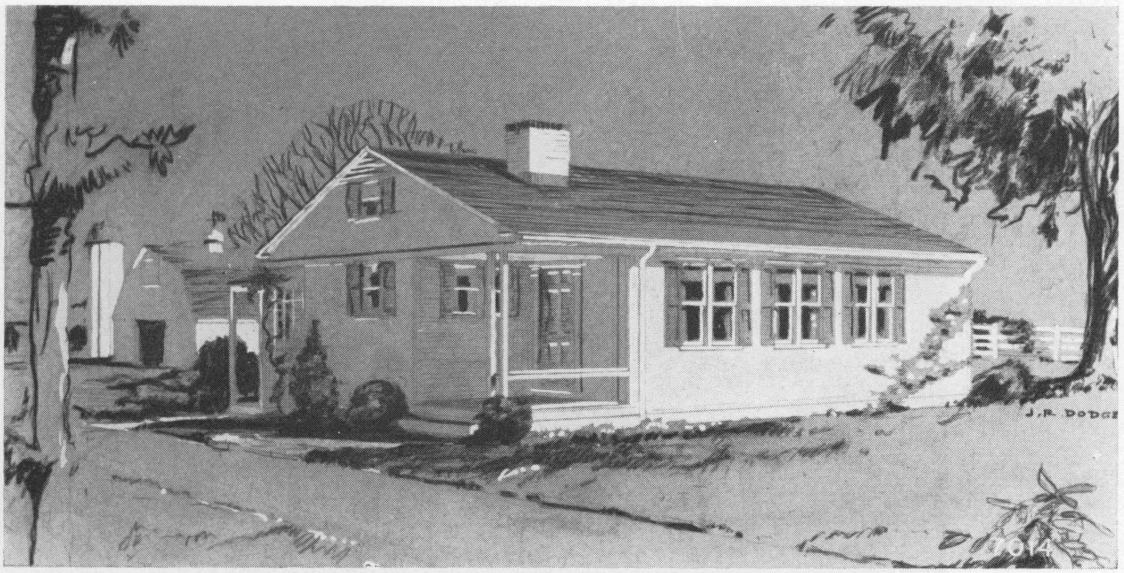
As you plan, consider adequate wiring and outlets to take care of both present and future needs.

Electric and telephone lines should be brought to the rear or to the side of the house. Ask your county extension agent for bulletins on wiring, water systems, sewage disposal and farmstead planning.

CHECK THE PLAN

<i>Does it meet your family's needs?</i>	<i>Does it provide for:</i>
A suitable site	Sound, economical materials
Sufficient space for all activities	Low-cost maintenance
Adequate storage	Adequate utilities
Convenience and comfort	Safety

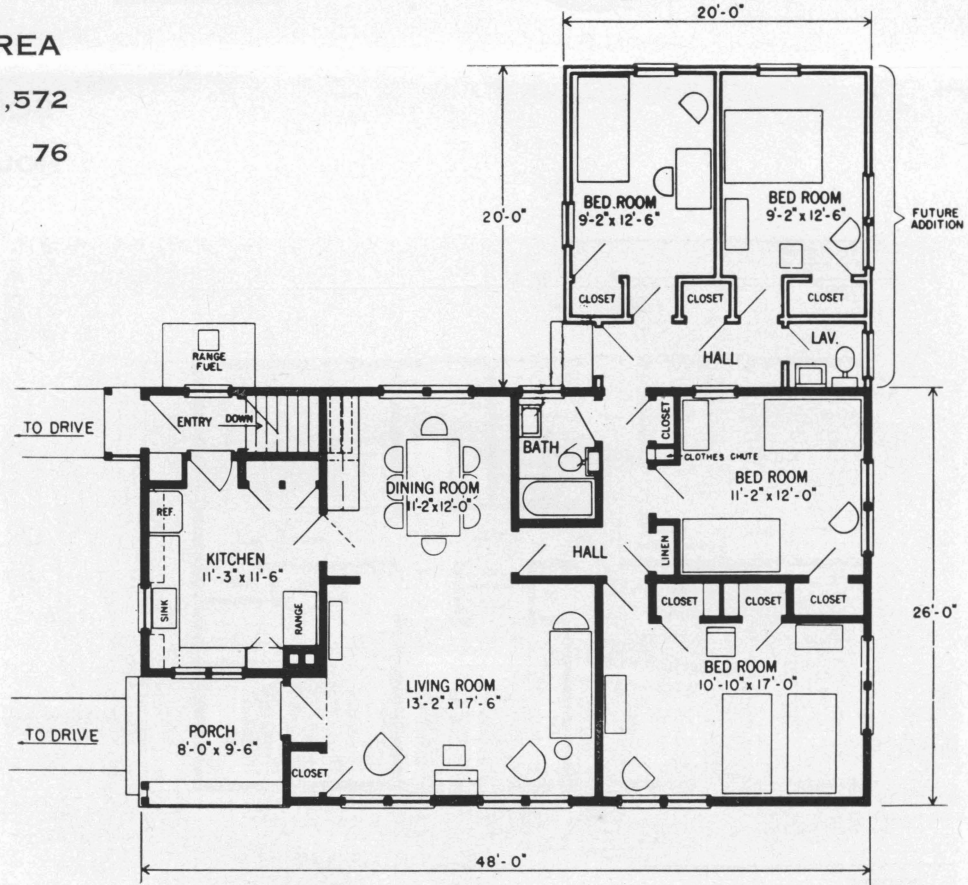
FOUR-BEDROOM HOUSE



Plan No. 7014

SQUARE FOOT AREA

HOUSE	1,572
PORCH	76



PLAN NO. 7014

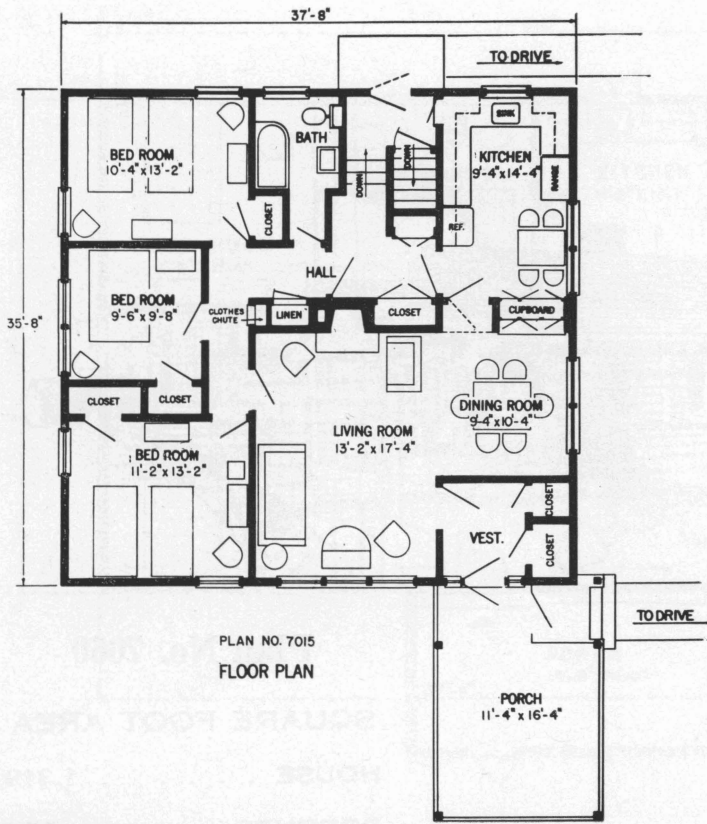
THREE-BEDROOM HOUSES



Plan No. 7011

SQUARE FOOT AREA
HOUSE 1,130

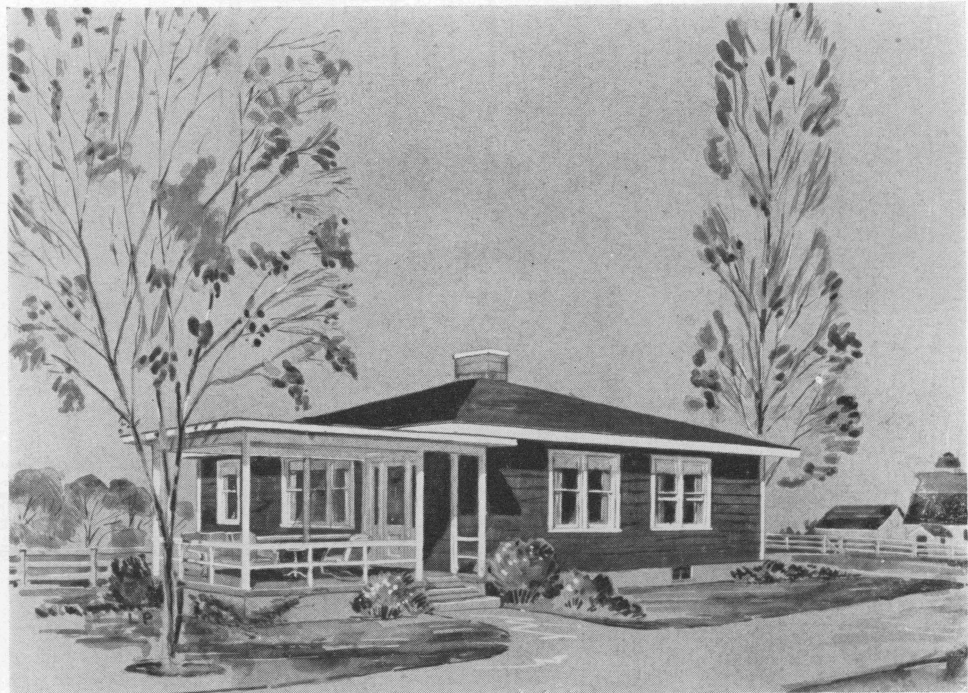




Plan No. 7015

SQUARE FOOT AREA

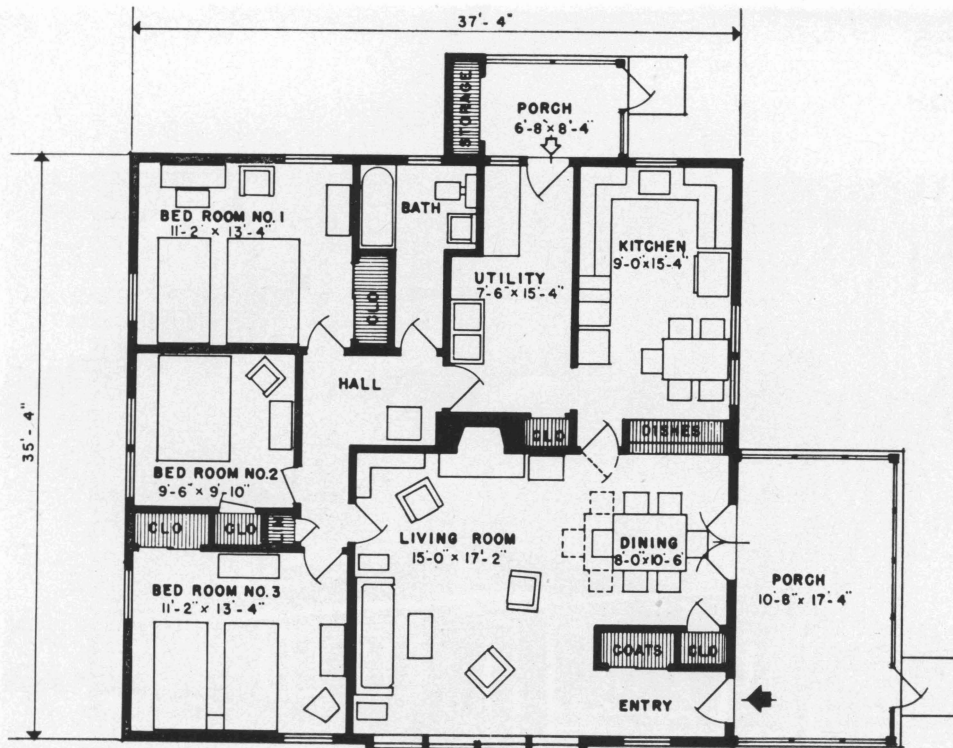
HOUSE	1,342
PORCH	190



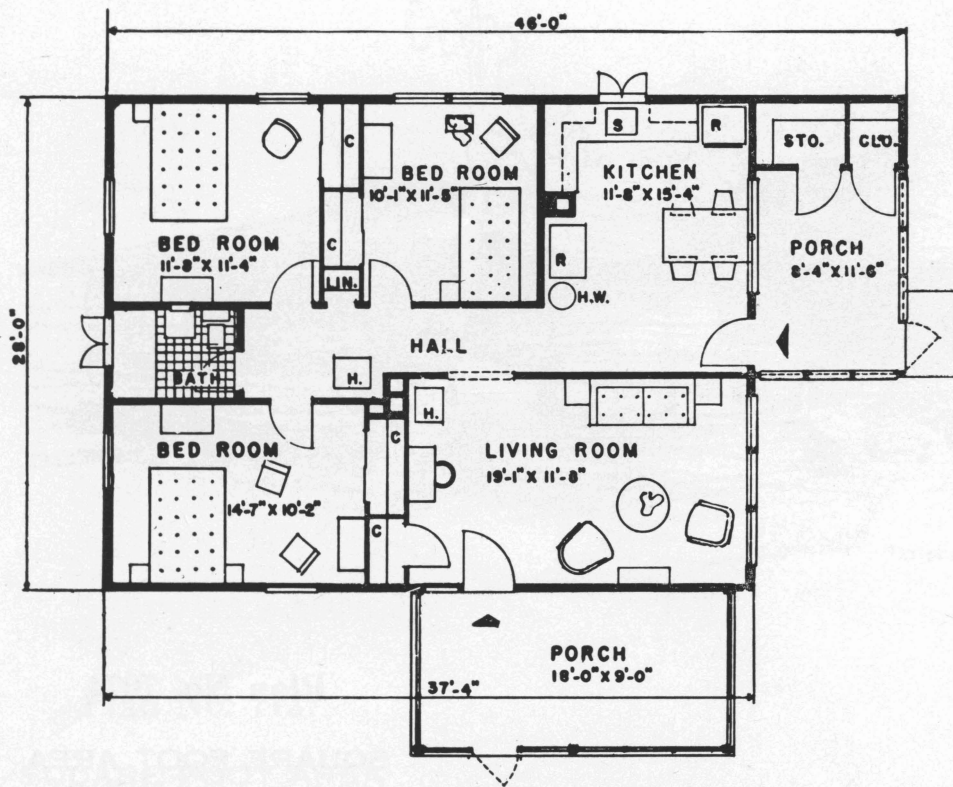


Plan No. 7060

SQUARE FOOT AREA	
HOUSE	1,319
PORCHES	256



PLAN
SCALE $\frac{1}{8}'' = 1'-0''$



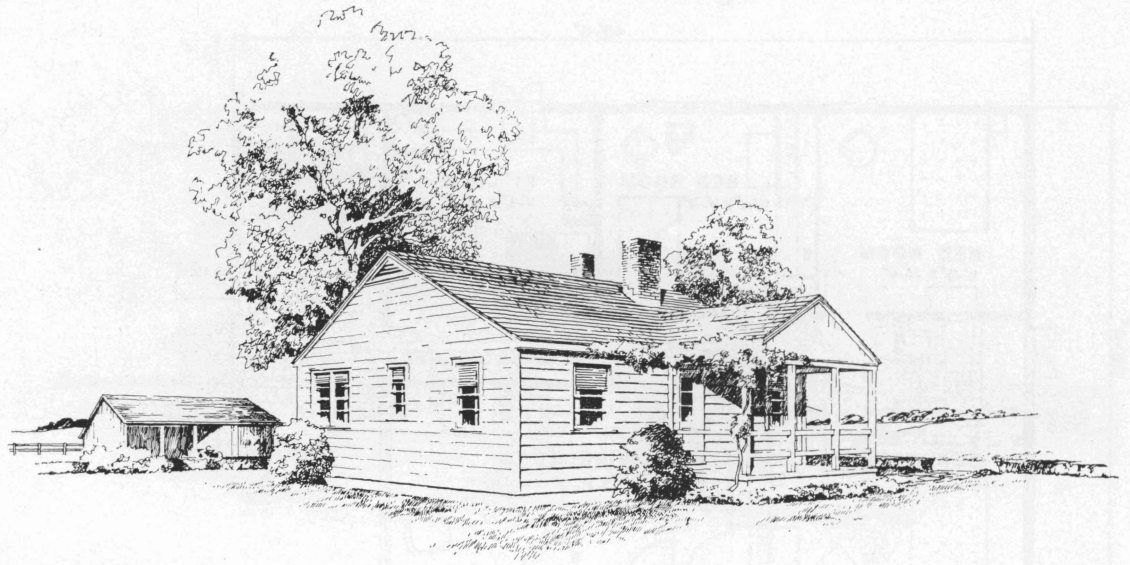
Plan No. 7072

SQUARE FOOT AREA

HOUSE 1,045

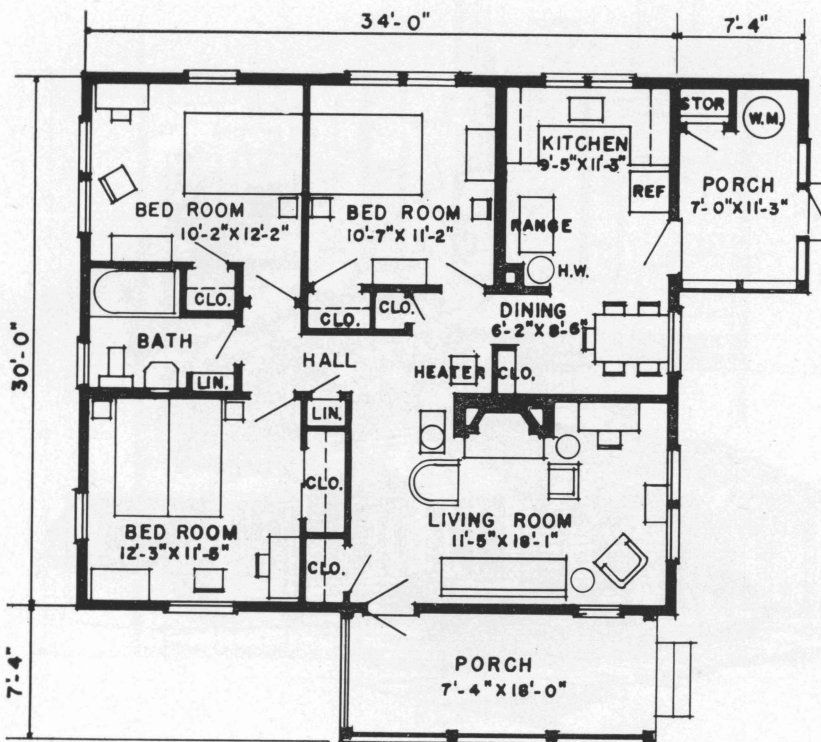
PORCHES 310

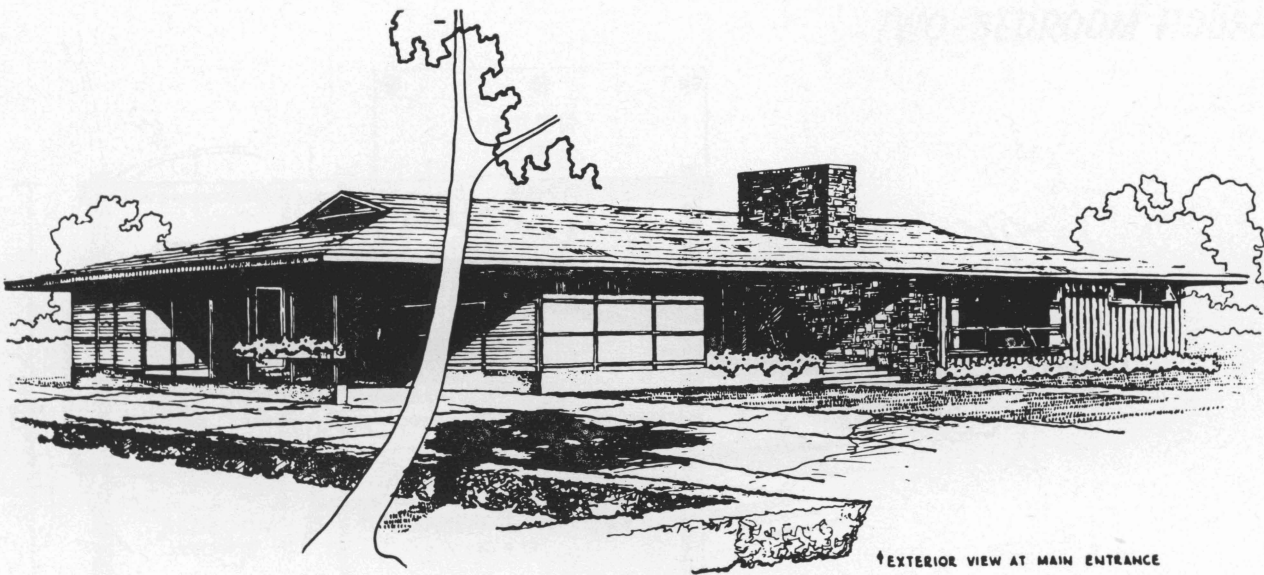




Plan No. 7074

SQUARE FOOT AREA
 HOUSE 1,020
 PORCHES 210



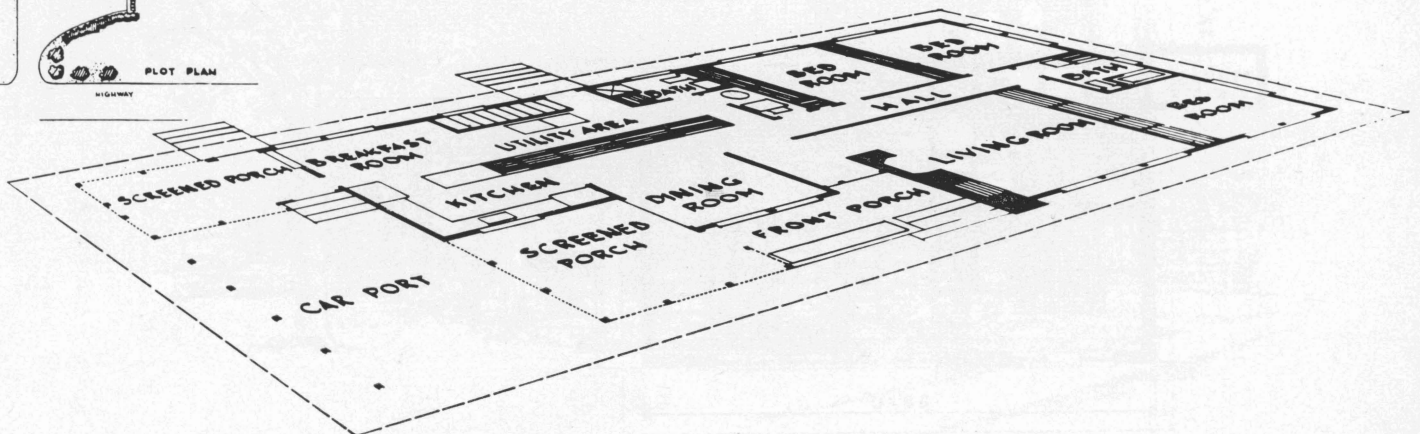
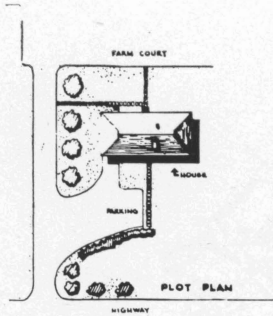


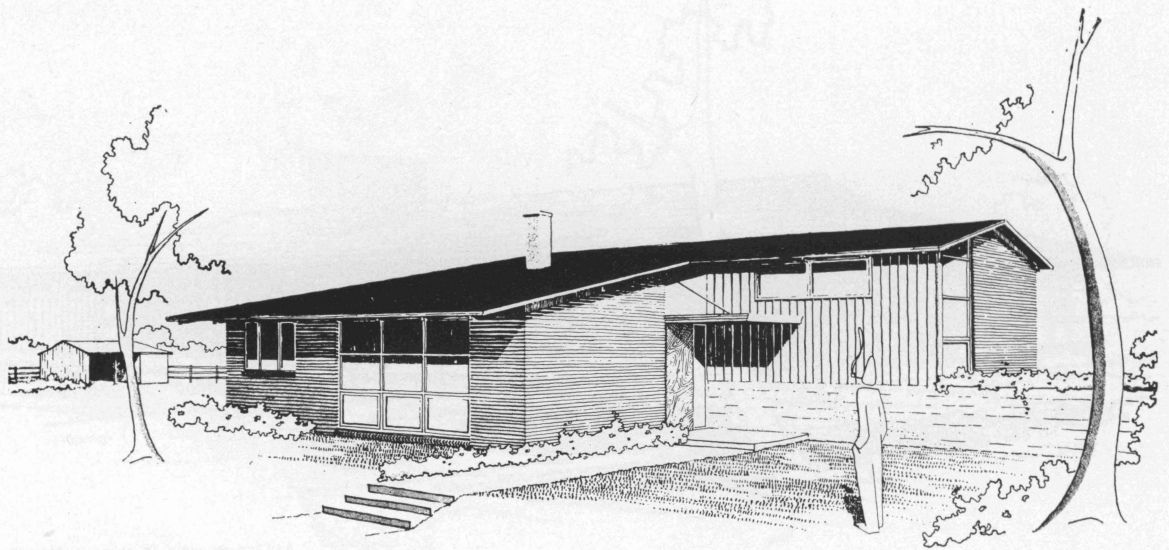
↑ EXTERIOR VIEW AT MAIN ENTRANCE

Plan No. 7127

SQUARE FOOT AREA

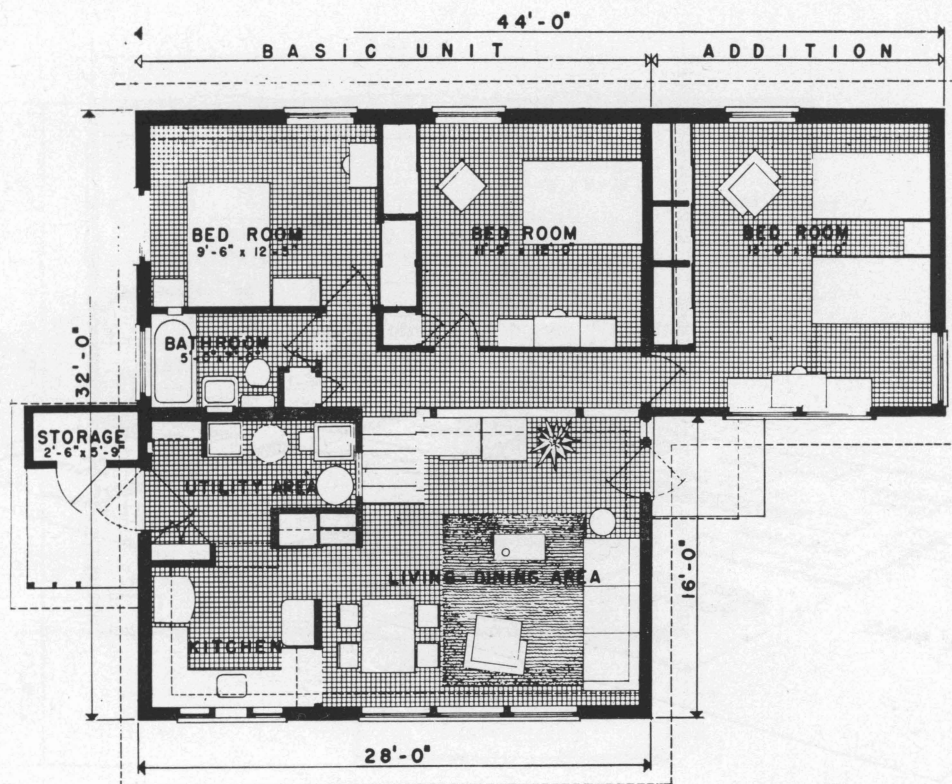
HOUSE	1,248
PORCHES	372
GARAGE	240



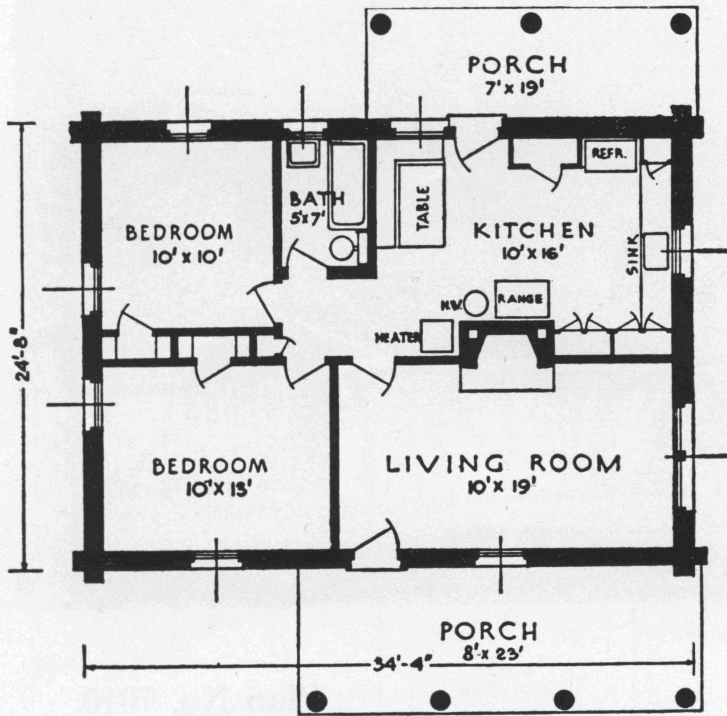


Plan No. 7128

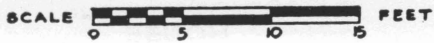
SQUARE FOOT AREA	
HOUSE	896
PORCH	98



TWO-BEDROOM HOUSES



PLAN

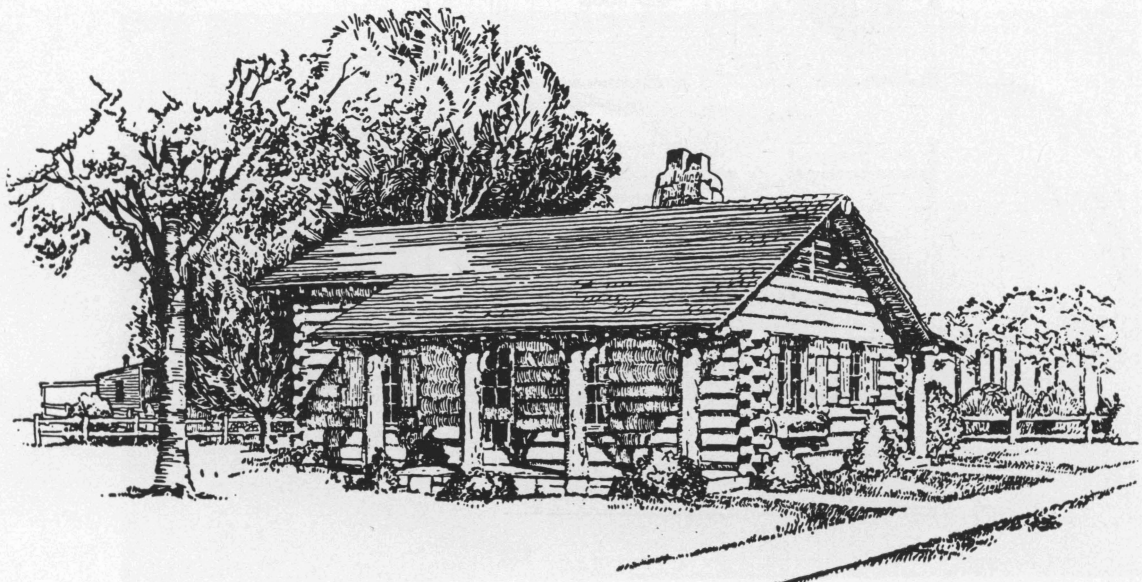


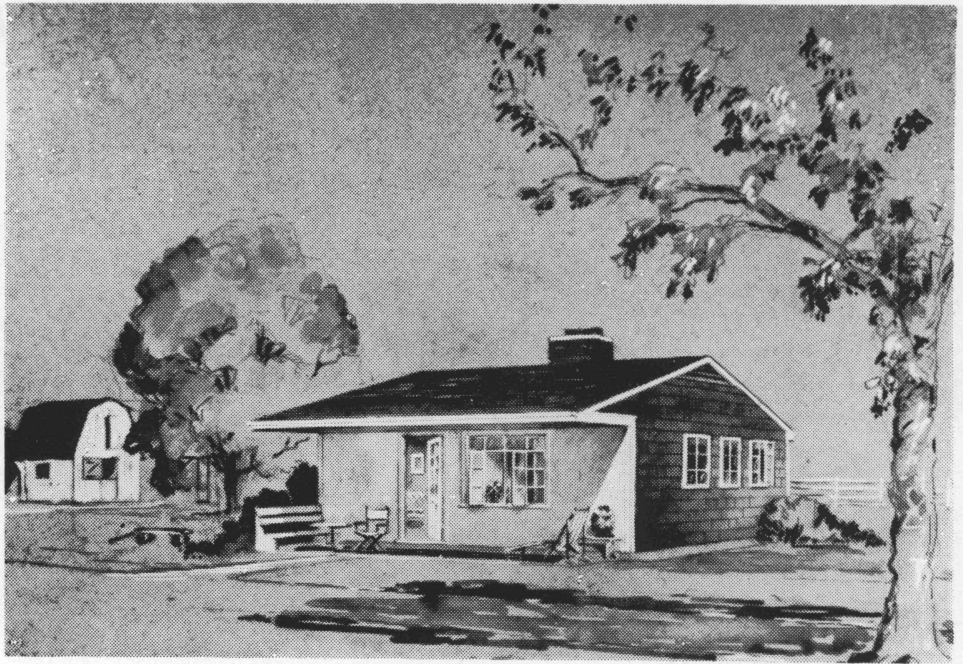
Plan No. 6526

SQUARE FOOT AREA

HOUSE 845

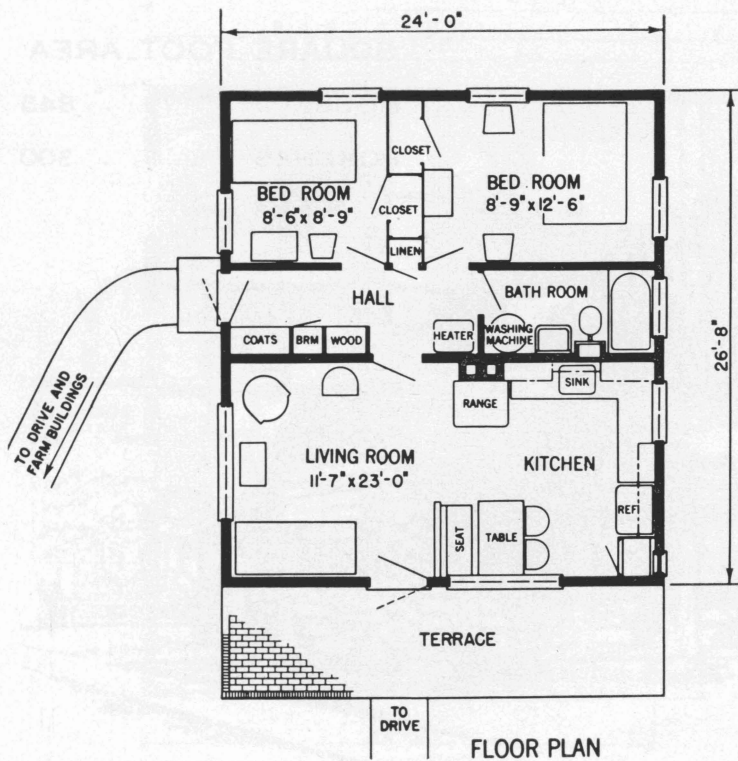
PORCHES 300

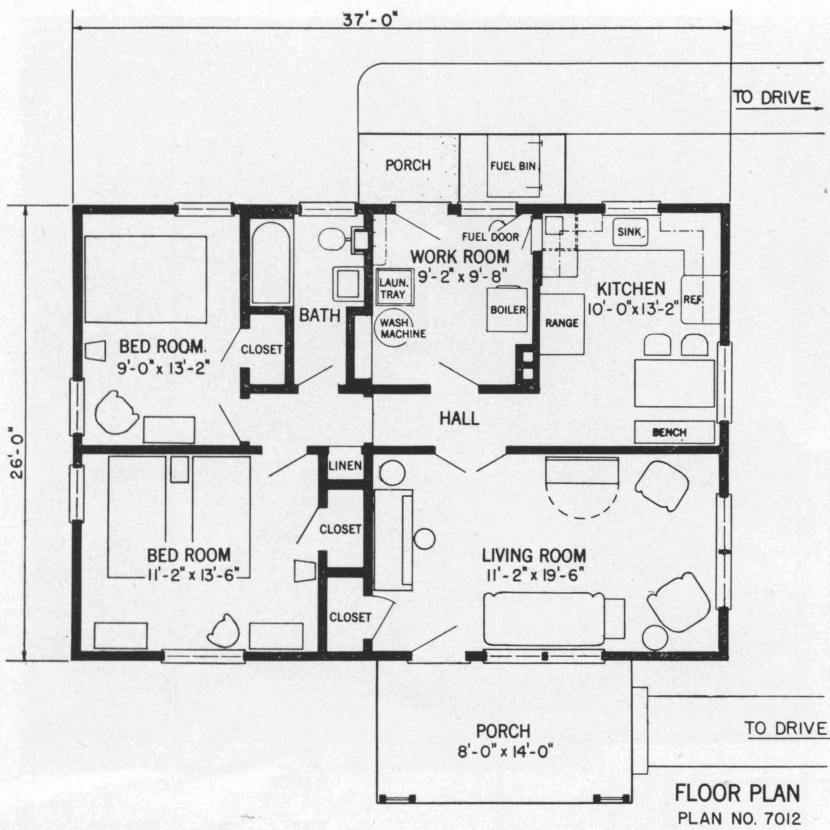




Plan No. 7010

SQUARE FOOT AREA
 HOUSE 640

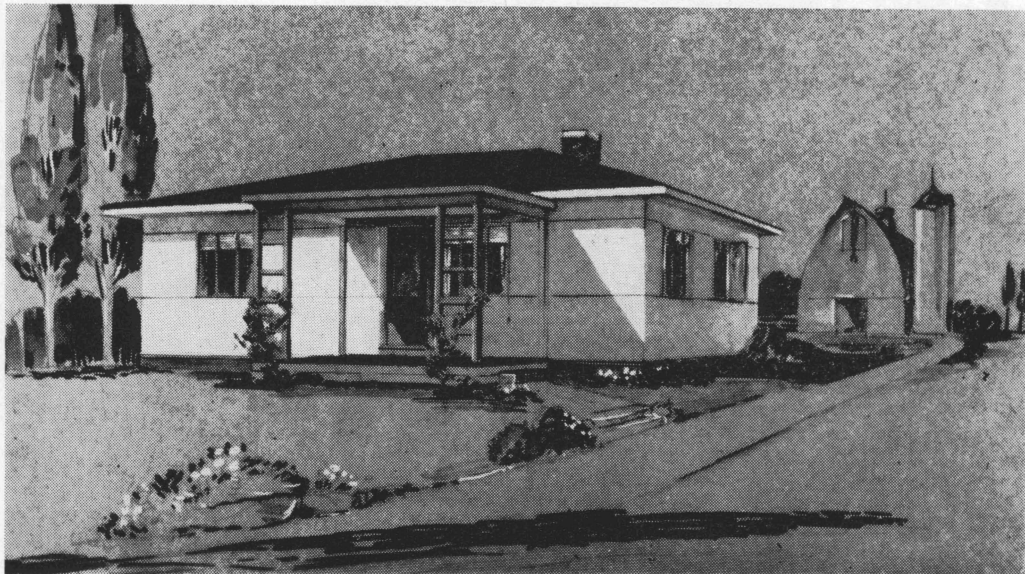




Plan No. 7012

SQUARE FOOT AREA

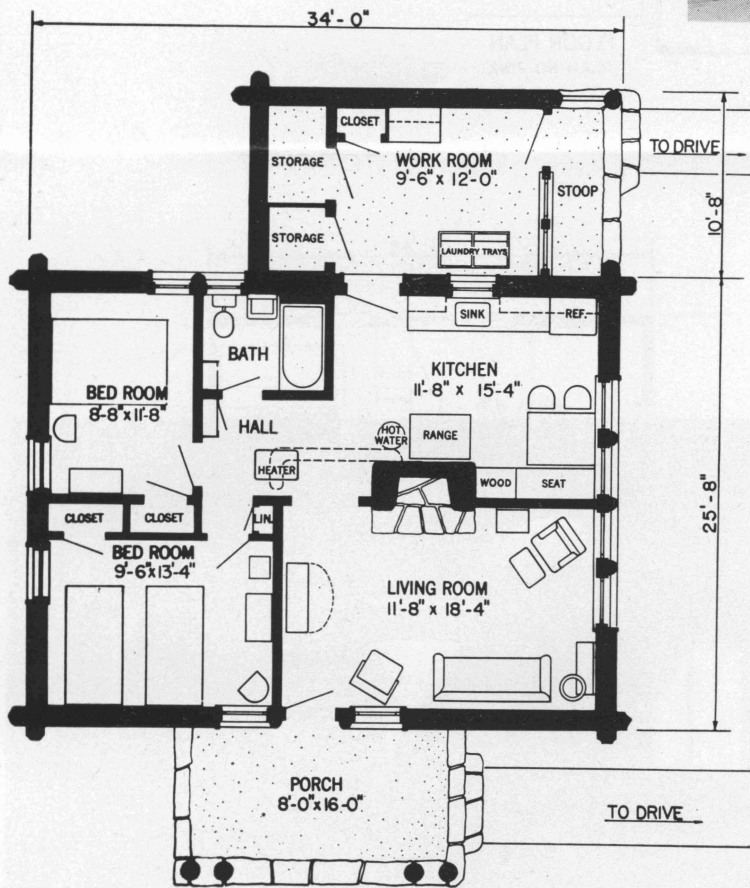
HOUSE	962
PORCHES	112



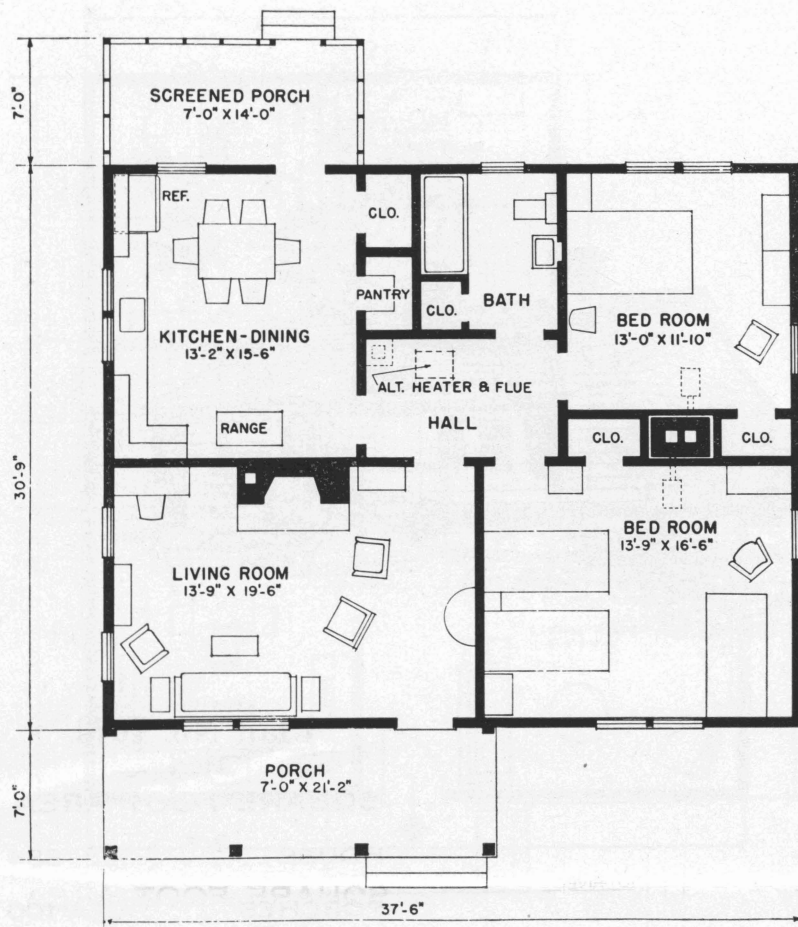


Plan No. 7013

SQUARE FOOT AREA	
HOUSE	986
PORCH	128



FLOOR PLAN
PLAN NO.7013



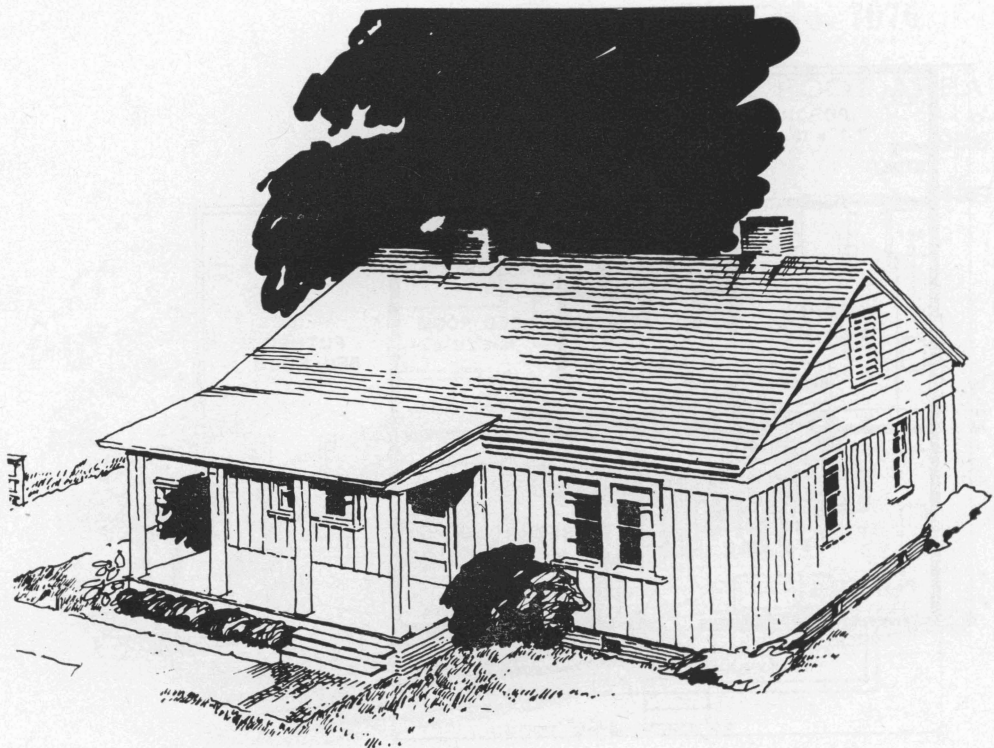
FLOOR PLAN

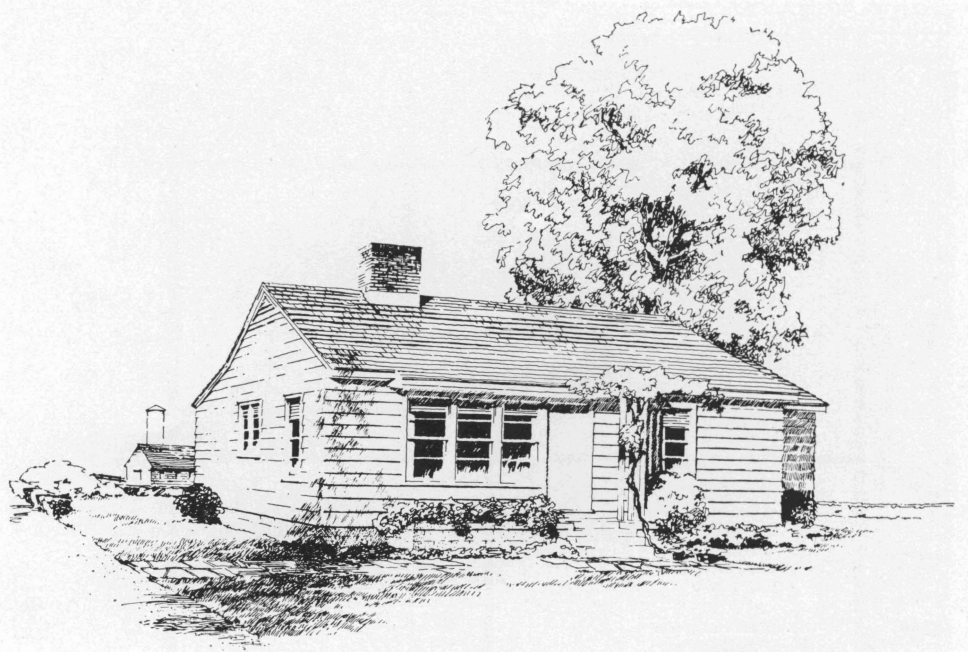
Plan No. 7047

SQUARE FOOT AREA

HOUSE 1,153

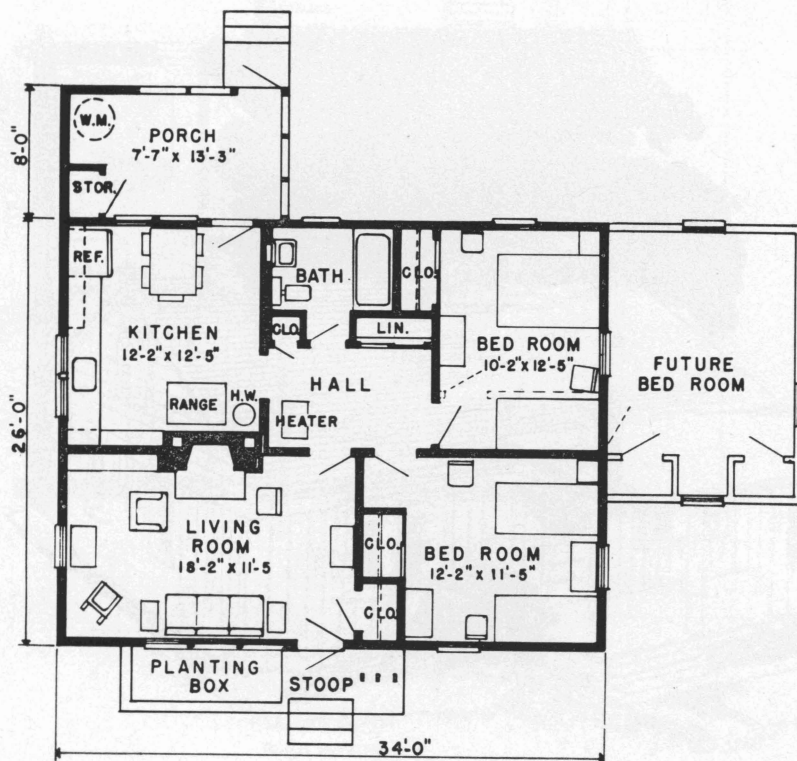
PORCHES 240

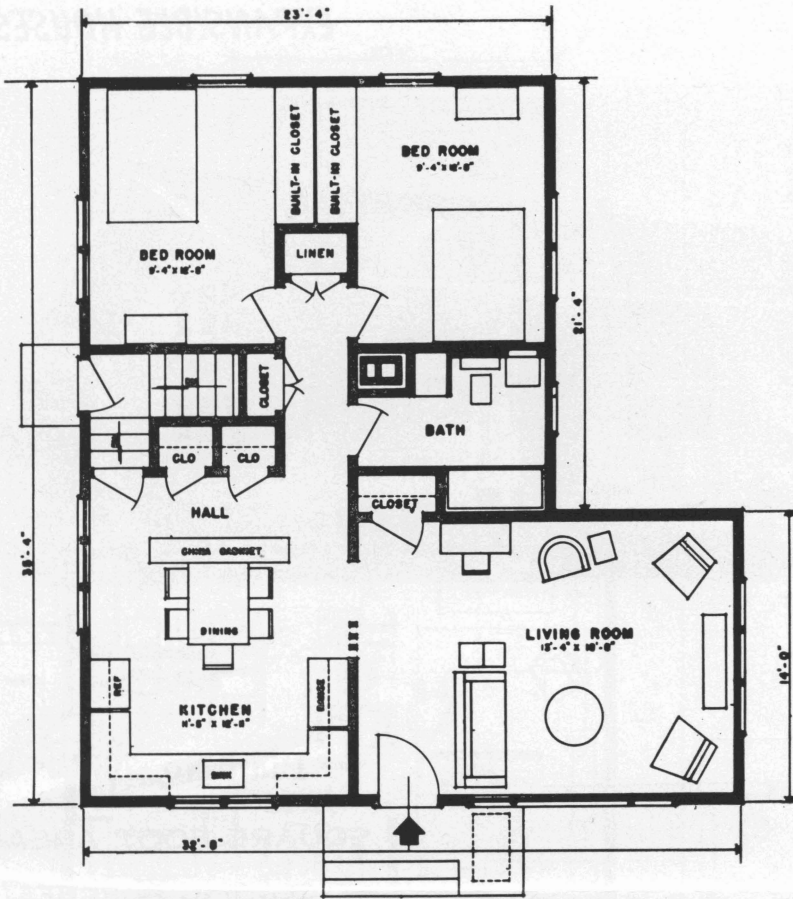




Plan No. 7073

SQUARE FOOT AREA	
HOUSE	884
PORCHES	100





FIRST FLOOR PLAN

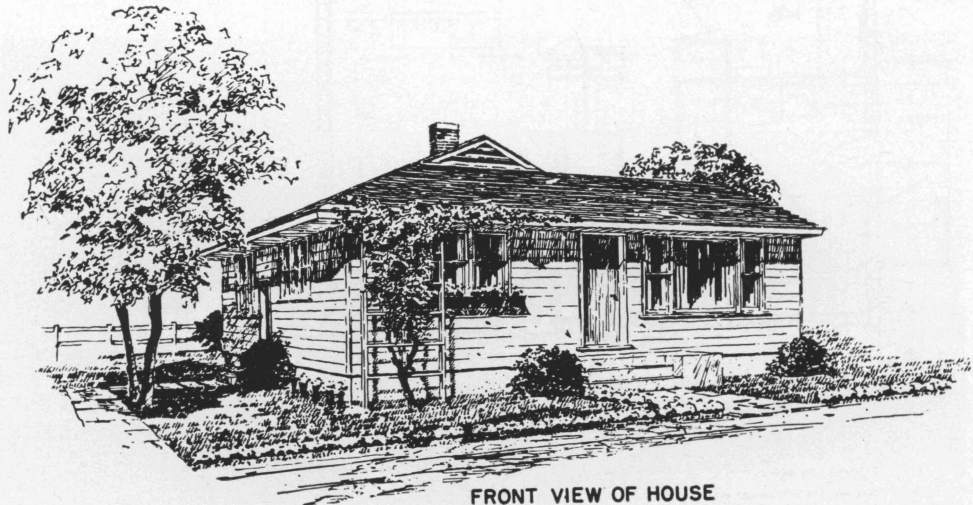
SCALE 0 2 4 6 8 FT.

Plan No. 7076

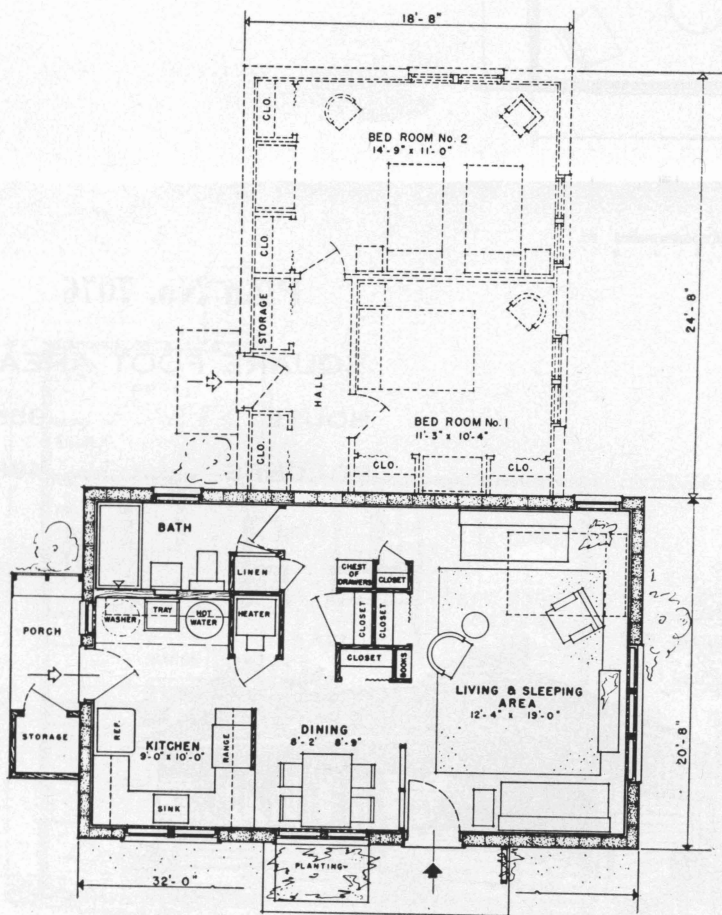
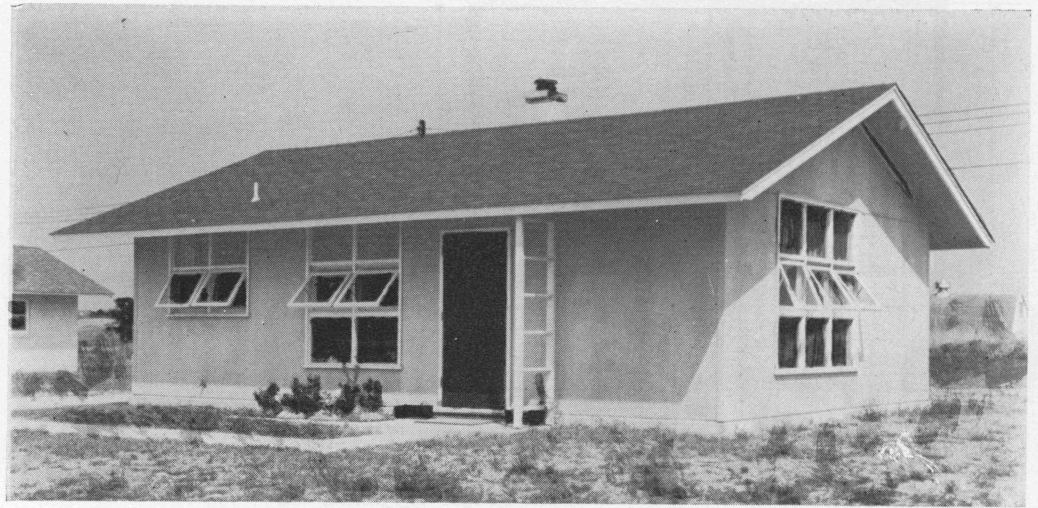
SQUARE FOOT AREA

HOUSE 955

PORCHES 498



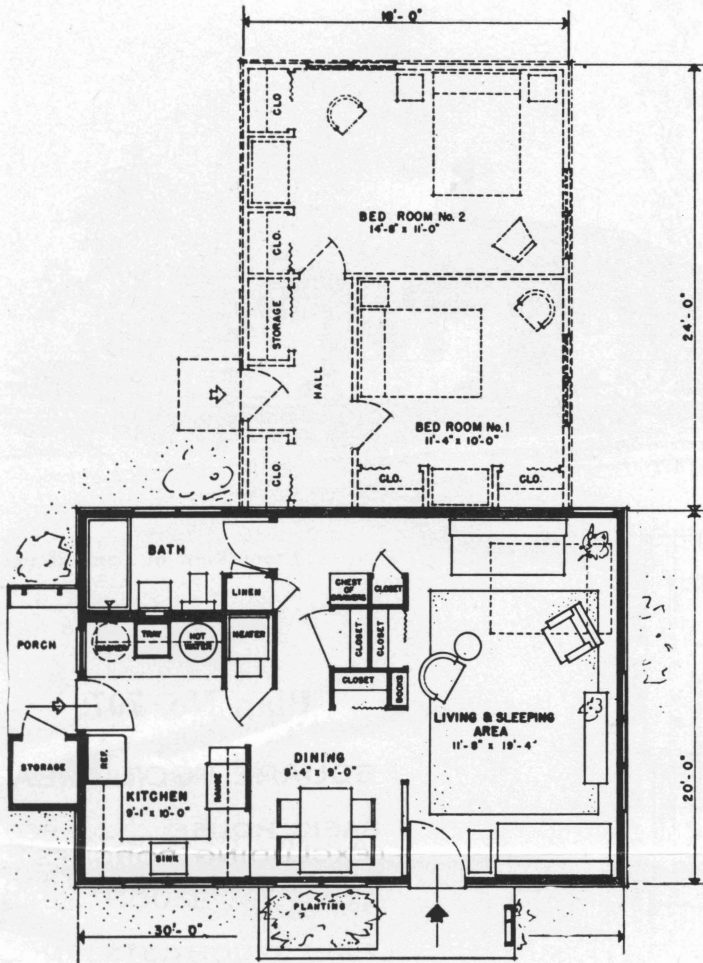
FRONT VIEW OF HOUSE



FLOOR PLAN
BED ROOM ADDITION SHOWN DOTTED

Plan No. 7061

SQUARE FOOT AREA
(EXCLUDING PORCHES)
BASIC HOUSE . . . 600
COMPLETED HOUSE 1,032

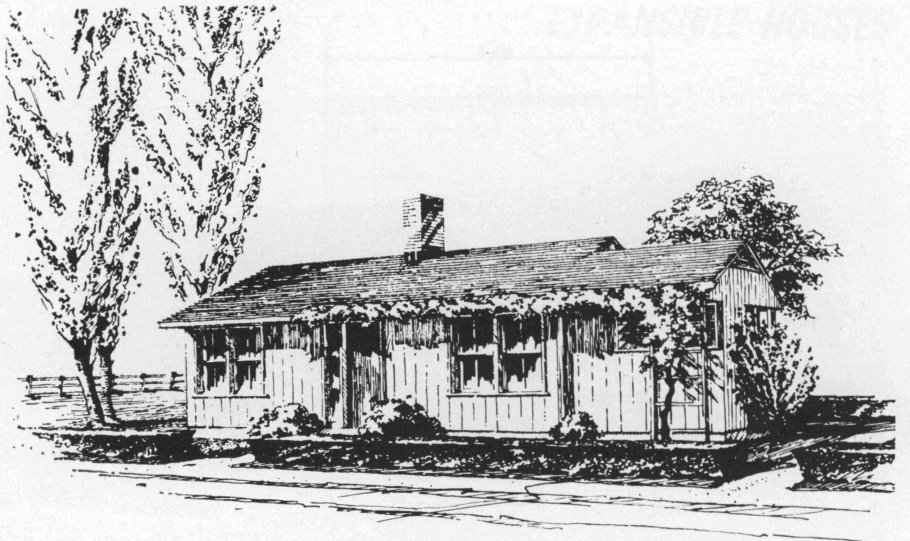


Plan No. 7062

**SQUARE FOOT AREA
(EXCLUDING PORCHES)
BASIC HOUSE . . . 662
COMPLETED HOUSE 1,122**

FLOOR PLAN
BED ROOM ADDITION SHOWN DOTTED.

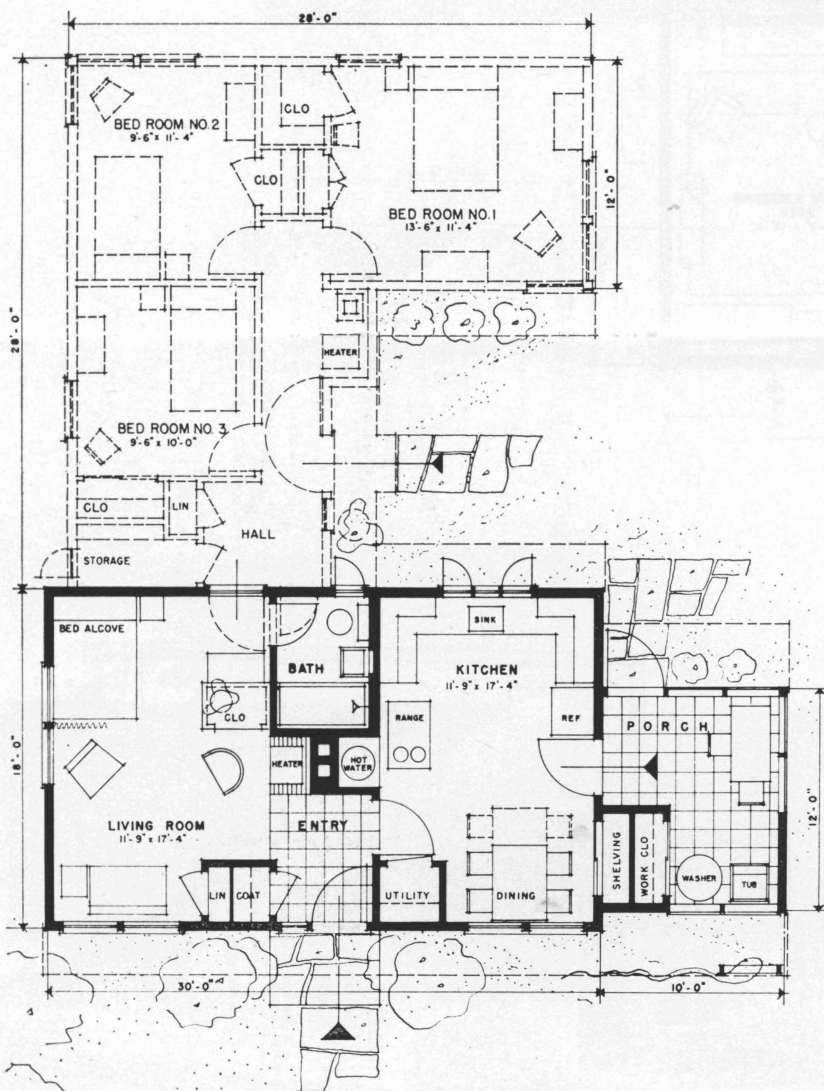


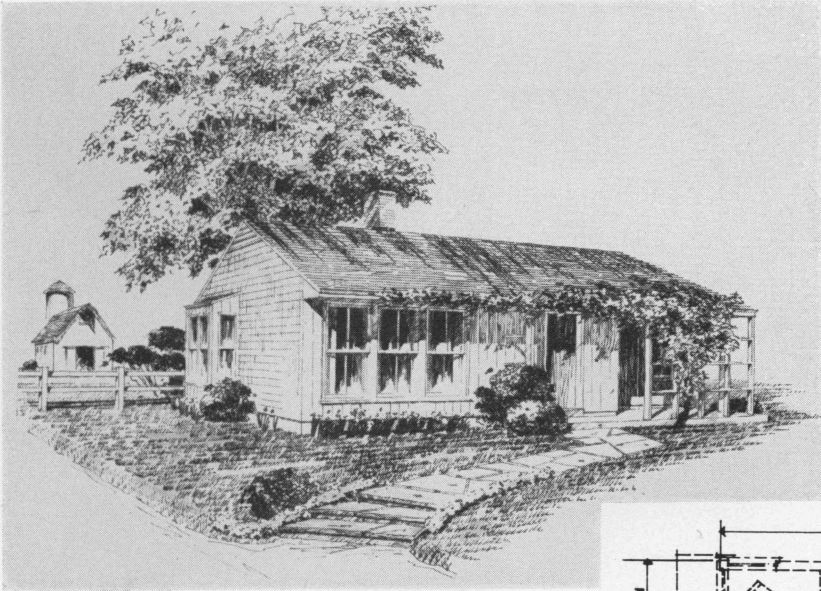


Front View of Basic House

Plan No. 7079

SQUARE FOOT AREA
BASIC HOUSE . . . 660
COMPLETED HOUSE 1,230

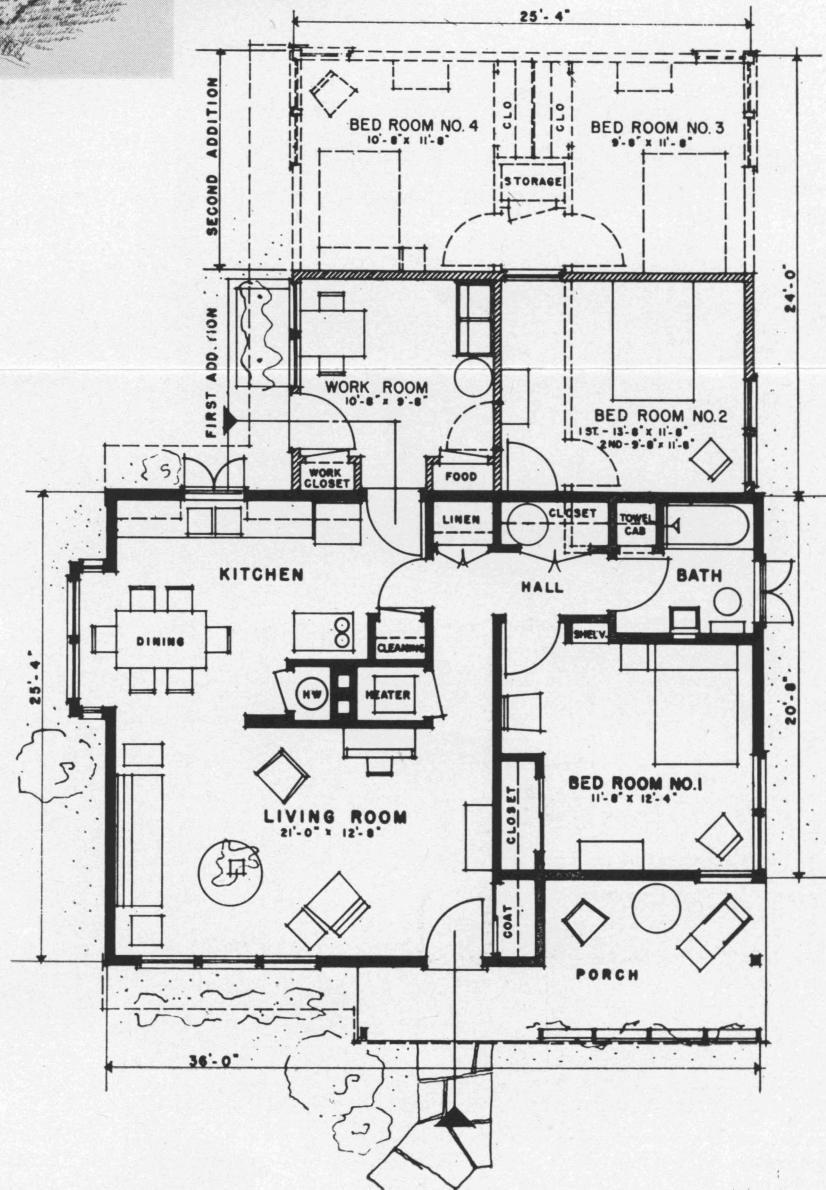




View of Basic House

Plan No. 7083

SQUARE FOOT AREA
 BASIC HOUSE . . . 872
 COMPLETED HOUSE 1,628



SUPPLEMENTARY PUBLICATIONS

TEXAS PUBLICATIONS

- B-142 Household Equipment, Its Care and Simple Repair
- B-171 Easy Steps to Farm House Planning
- C-252 House Cleaning Made Easier
- L-64 Protect Your Farmstead from Fire
- L-78 Common Causes of Home Fires
- L-195 Frame House Construction Details for Texas
- L-215 Let's Build a Picnic Table
- L-229 How to Use Cut-outs in Planning Your Farmhouse

USDA PUBLICATIONS

- F-1460 Simple Plumbing Repairs in the Home—for sale at 5c a copy
- F-1572 Making Cellars Dry
- F-1756 Selection of Lumber for Farm and Home Building
- F-1772 Use of Concrete on the Farm
- F-1869 Foundations for Farm Buildings
- F-1889 Fireplaces and Chimneys
- F-1950 Sewage and Garbage Disposal on the Farm
- F-1978 Safe Water for the Farm
- F-1993 Decay and Termite Damage in Houses
- G-12 Your Farmhouse—Planning the Kitchen and Workroom
- G-14 The Step-Saving U Kitchen
- G-19 Your Farm House—Planning the Bathroom
- G-42 Your Farm House—How to Plan Remodeling
- L-287 Farmhouse Plans for Minimum Budgets