

7027

Storeria

6 mi NW Tivoli, Refugio Co., Texas, June 11, 1961
Coastal Prairie - DOR - HWY 113. ♂

Color: Dorsum brick red, with mid-dorsal stripe of ochraceous yellow (burnt orange) [some brownish tints to it] double series of ^{linear} small black dots on either side of mid-dorsal stripe (about one dot per scale) mid-dorsal stripe continuous to tip of tail. Head burnt brown (reddish brown) pair of blackish spots on either side of neck, iris bright red; legs spotted with black; Venter coral red, black dots somewhat obscure, center of chin with cream area. obscure lateral line (reddish brown) on first row of scales; when dorsal scales spread apart, skin is light pink. - Venter slightly lighter anteriorly - almost rose pink from about 15th ventral forward. 17-17-17; V-134, C-57, P₀-2/2; P₁₀-2/2; L-0/0; T-1+3; INF-7/7, SUP-7/7 (3+4), ^{ANAL-} 0

7026 - Elaphe o. linheimeri ♂; 11 mi NW Tivoli, Refugio Co., Tex. - June 11, 1961 DOR. HWY 113

7025 - Kinosternon ♂; 15 mi NE La Grange, Fayette Co., Tex., June 11, 1961 AOR.

Dead M. f. flagellum? observed 18 mi N La Grange; June 11, 1961. Not preserved.

- 7028 Thamnophis s. proximus ♀, 3 mi NE. Fulton,
Aransas Co., Texas, AOR June 11, 1961
- 7029 Ancistrodon piscivorus, 6 mi NE Rockport,
Aransas Co., Texas, AOR June 11, 1961
- 7030 Ancistrodon piscivorus yg. ♀, 6 mi N. Rockport,
Aransas Co., Texas, AOR June 11, 1961
- 7031 Pseudacris clarki Ad ♂, 3 mi NE Rockport,
Aransas Co., Tex., Rdside Rainpool, June 11, 1961
- 7032 3 mi NE Rockport, Aransas Co., Tex., June 12, 1961
Elaphe guttata emoryi AOR 6:15 AM
- 7033 10 mi NW Tivoli, Refugio Co., Tex., June 12, 1961.
Thamnophis s. proximus ♂ DOR Hwy 113.
- 7034-51 9 mi N. Victoria, Victoria Co., Tex., June 12, 1961
Thamnophis s. proximus ♀, AOR Hwy 77
Bore 17 young night of June 12, 1961.
- 7052-69 5 mi N. Hilllettsville, Lavaca Co., Tex., June 12, 1961
Storeria d. texana ♀, AOR Hwy 77
Bore 17 young, night of June 13, 1961.

Rhinocentulus lecontei clarus ad ♀

1.5 mi SW Apache, 4375 ft., Cochise Co., Arizona ^{9:05 PM}

LOA-625, T-83; BB-20, T-5, (white B-21, T-24) ^{11:35} ^{high red}

venter yellowish cream, black markings of dorsal saddles confined to outer edges of ventrals, head coloration meeting across 3+4 ventrals, 3 small black spots below tail; go tail yellowish cream; small black spots between black saddles on ventrals; Dorsum with grayish cream interspaces; lateral areas with red between or on anterior tips of few scales; black interspaces with lateral yellowish cream spots enclosed by black. (center of scale yell-cream, outer edges black) sides of head mottled yell-cream + black; Frontals to rostral brownish yellow with scales black edged.

Arizona elegans ♂ young

1/2 mi NE Apache, 4350', Cochise Co., Arizona 8:45 PM

LOA-293, T-45

venter immaculate white; lower lips similar + tail; dorsal bands cinnamon brown, lateral markings similar, lateral interspace pinkish tan; dorsal interspace pinkish cream; chocolate brown line from post. edge of eye to lat sup. lab.; snout tan; chocolate brown spots scattered on head, over tannish g.c.; iris rusty red.

Pituophis catenifer affinis ♀ ^{LOA Tail} -760-95

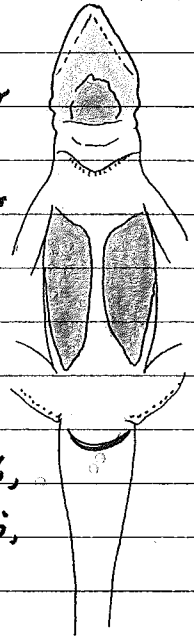
7.3 mi SW Apache, 4550', Cochise Co., Arizona 9:25 PM

Crotalus atrox yg ♀ ^{LOA Tail} 350-25

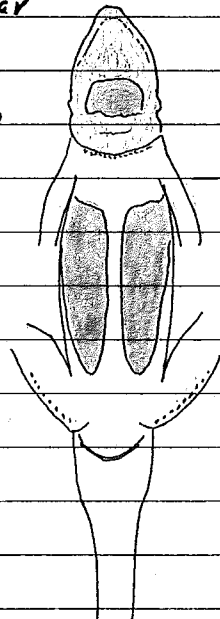
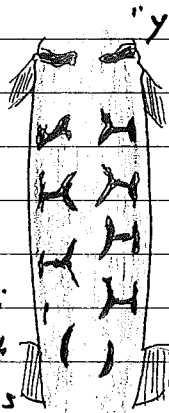
3.3 mi SW Apache, 4450', Cochise Co., Arizona 9:50 PM

7284-85 Glenwood, Catron Co., N.M., 3-28-62.

No. 7284, pinkish, tail pink, throat with blue patch surrounded with orange; Lateral patches (bright blue) pea green, dorsal pattern obscure, cinnamon ground color, with light grayish blue diffuse spots on either side of mid-dorsal rows of enlarged scales; upper row of lateral tubercles with brown line, some of tubercles cream tipped; limbs barred with blackish gray on ground color; tail with faint grayish bands on bright cinnamon ground color, head brownish, lower labials white, upper cinnamon, venter grayish white



No. 7285 - Tail cinnamon; with irregular grayish bands; cinnamon stripe down mid-dorsum; lateral mid-dorsal region grayish with flecks of cinnamon, with lateral black "Y" shaped cross markings; head grayish; limbs marked with blackish bands; venter with two bright blue belly patches; bright blue with white surroundings; labials



grayish, venter, dirty gray, whitish pink line below eye; lat. tub. tipped with yellow.