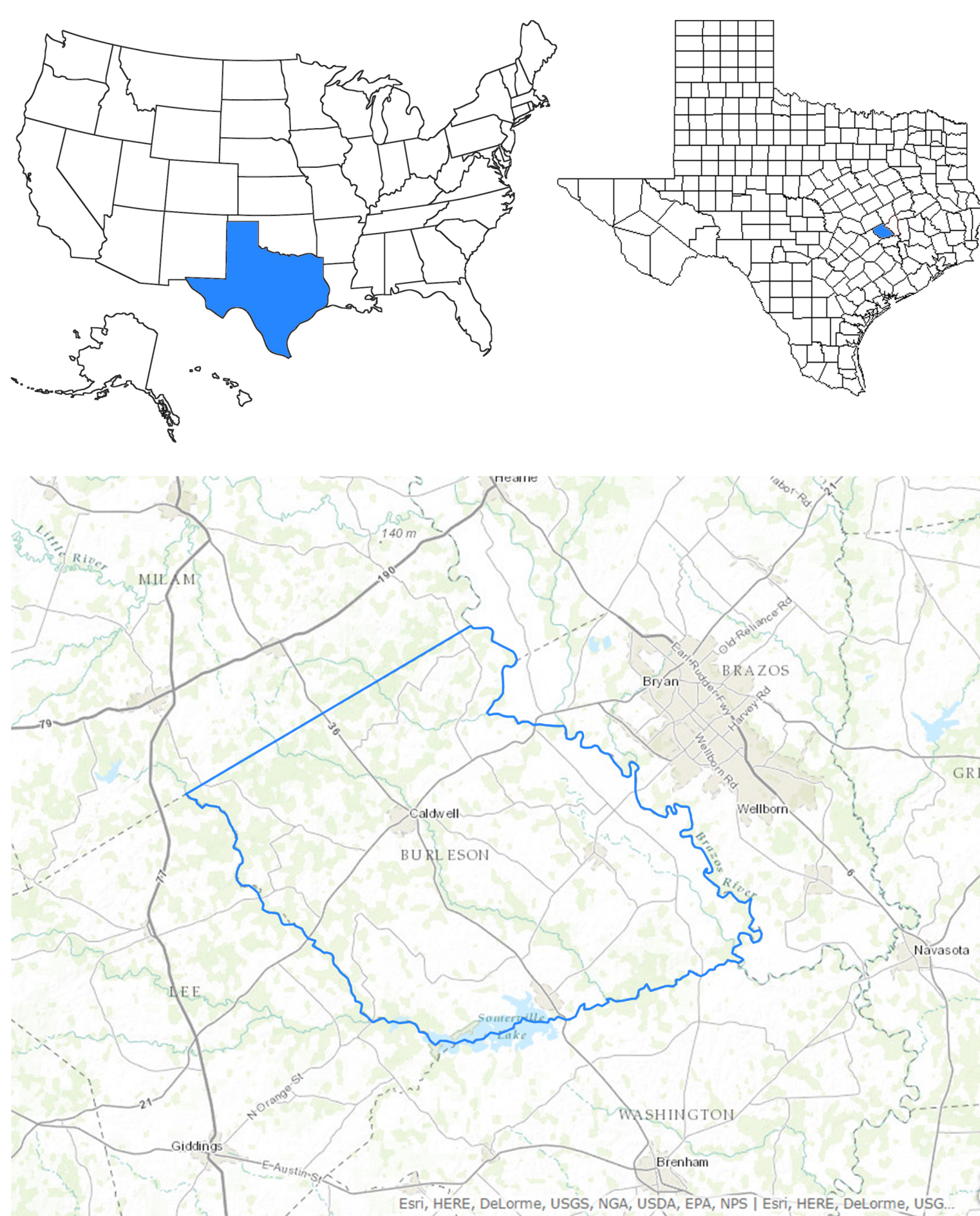


## LOCATION



## Burleson County, TX

Burleson County is a county located in the U.S. state of Texas. As of the 2010 census, the population was 17,187. Its county seat is Caldwell. The county is named for Edward Burleson, a general and statesman of the Texas Revolution.

Burleson County is part of the College Station-Bryan, TX Metropolitan Statistical Area.

From 1975 to 1995, the Burleson county judge, who presides over the commissioner's court, were the son and father team of Mark Steglich Caperton (born 1946), a Caldwell attorney, and Woods Allen Caperton (1920-2009). Mark Caperton was the judge from 1975 to 1983 and was succeeded by his father, a former agent of the United States Soil Conservation Service. Woods Caperton also served seventeen years as a member of the Caldwell Independent School District and was a member too of the Burleson County Hospital District. During his time on each board, a new high school and hospital were begun. Woods Caperton was also chairman of the Brazos Valley Development Council and the Brazos Valley Mental Health Mental Retardation Center. He founded the Caldwell Cub Scouts and was instrumental in the development of the Caldwell Little League. Another son, Kent Caperton, served from 1981 to 1991 as the District 5 state senator. Kent Caperton, formerly of Bryan, is a lobbyist and lawyer in Austin.

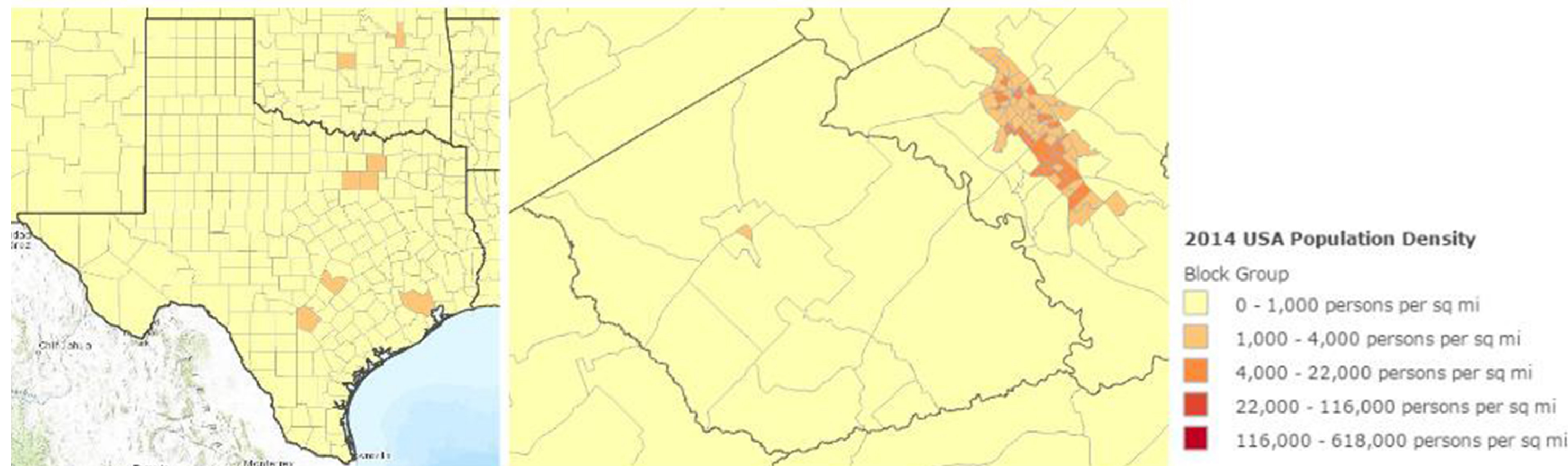
## SWOT

STRENGTHS	WEAKNESSES
The large population density in Caldwell where is the central location	Young people are leaving city to seek job opportunities
Good traffic flow	Lack of public transportation
Strong specialization: Agriculture/Hunting&Mining	Not enough employment f high housing vacancy rate
Good hazard mitigation plan	Lack of adequate infrastructure
OPPORTUNITIES	THREATS
New industries attract people stay here	The decreasing minority
The good connectivity can support public transportation	Concentration of transportation network around Caldwell
Somerville lake can attract tourists	Large employment centers within 2hrs drive

## DEMOGRAPHIC TRAITS

### Population Density

The population density in Burleson County is 27 person/ square mile, quite lower than the population density in Texas which is 102 person/ square mile.

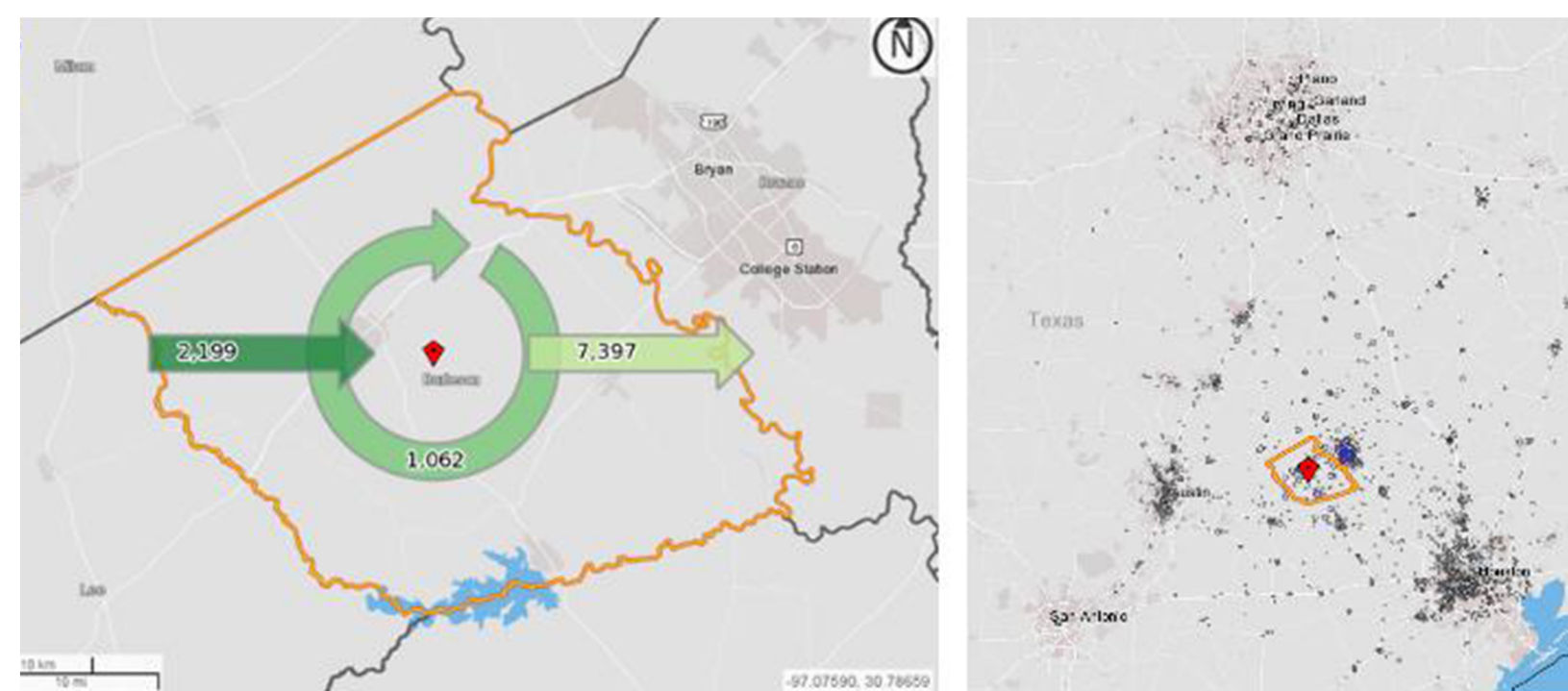


(Source: Esri's U.S. Updated Demographic (2014/2019) Data)

## TRANSPORTATION CHOICES

### Inflow/outflow Analysis

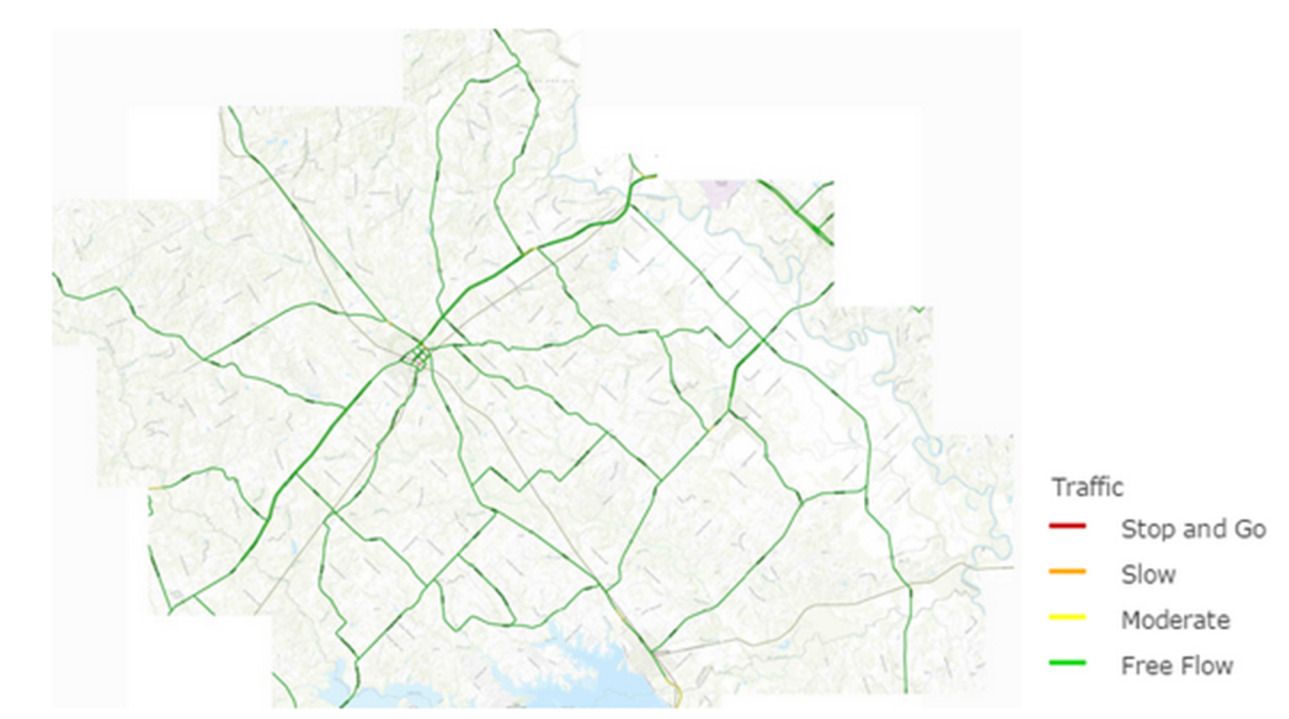
Two thirds people employed in the Burleson County but living outside; nearly 90% people living in Burleson County but employed outside; workplace concentrate on Bryan, College Station, Dallas, Austin and Houston.



(Source: <http://onhemap.ces.census.gov/>)

### Traffic Service

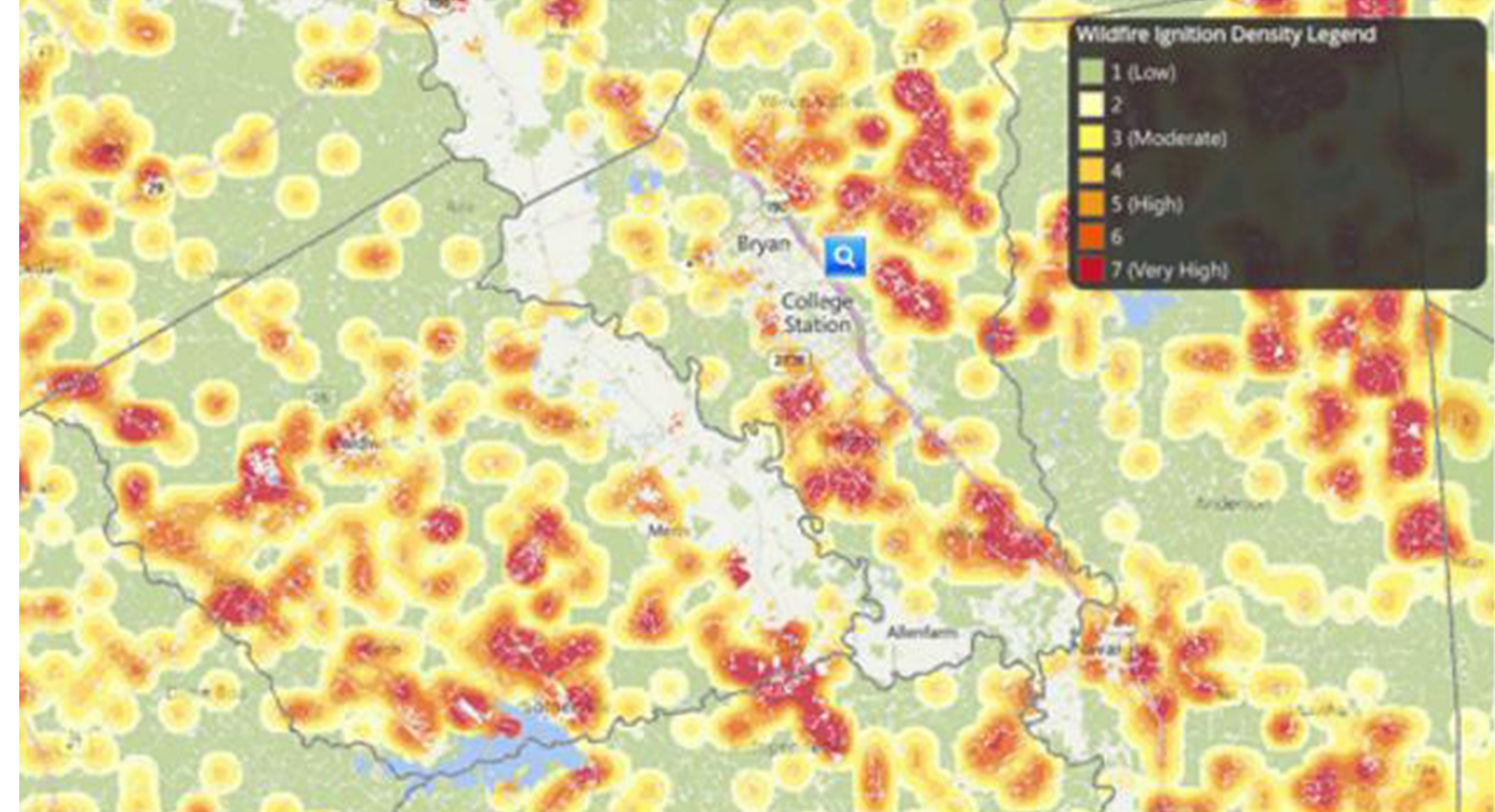
In Burleson County, traffic service including highway and railway, there no public transit; the traffic on highway in Burleson County are free flow; railway of Burleson County is responsible for freight trains.



(Source: <http://traffic.arcgis.com/arcgis/rest/services/World/Traffic/MapServer>)

## ENVIRONMENTAL SENSIBILITY

### Wildfire



Source: Texas A&M Forest Service

### Rivers and Lakes



(Source: PetroSwell, 2015)

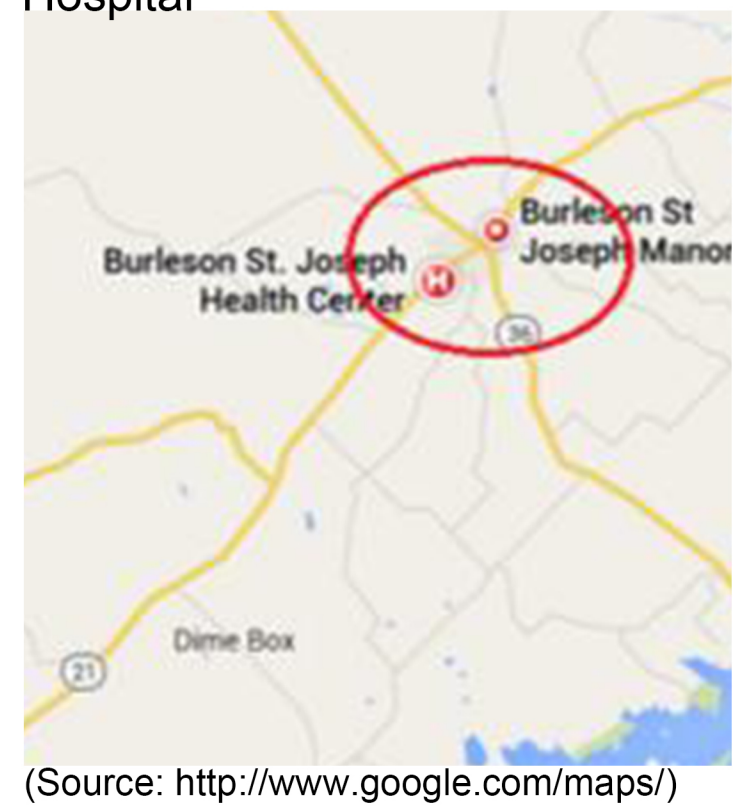
## INFRASTRUCTURE STSREM

### School



(Source: <http://www.google.com/maps/>)

### Hospital



(Source: <http://www.google.com/maps/>)

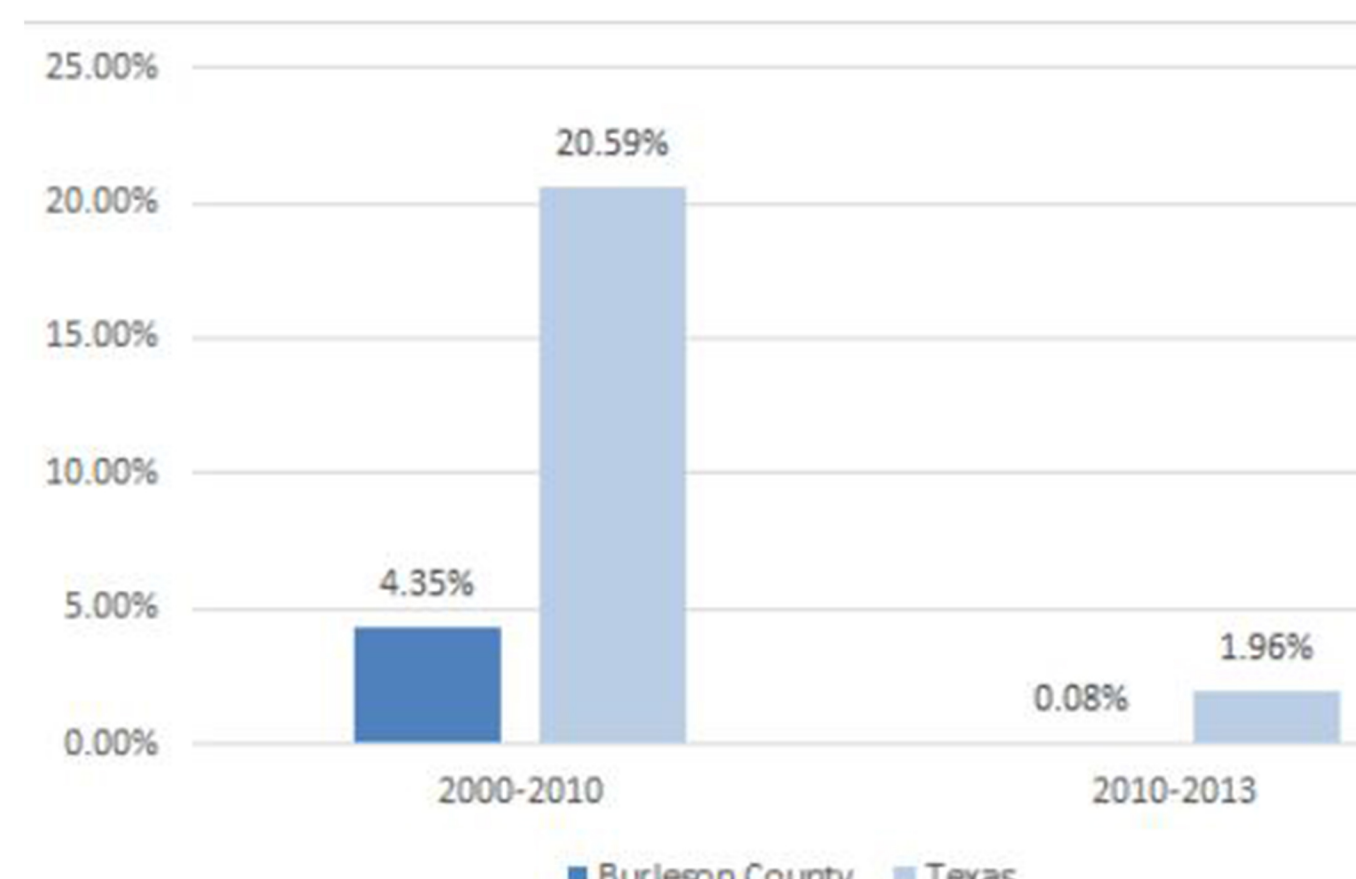
### Groundwater and Water Supply



(Source: <http://www.pogcd.org/district-information/aquifer-maps/>)

### Growth Rate

Neither Burleson County nor Texas, the growth rate is declining.

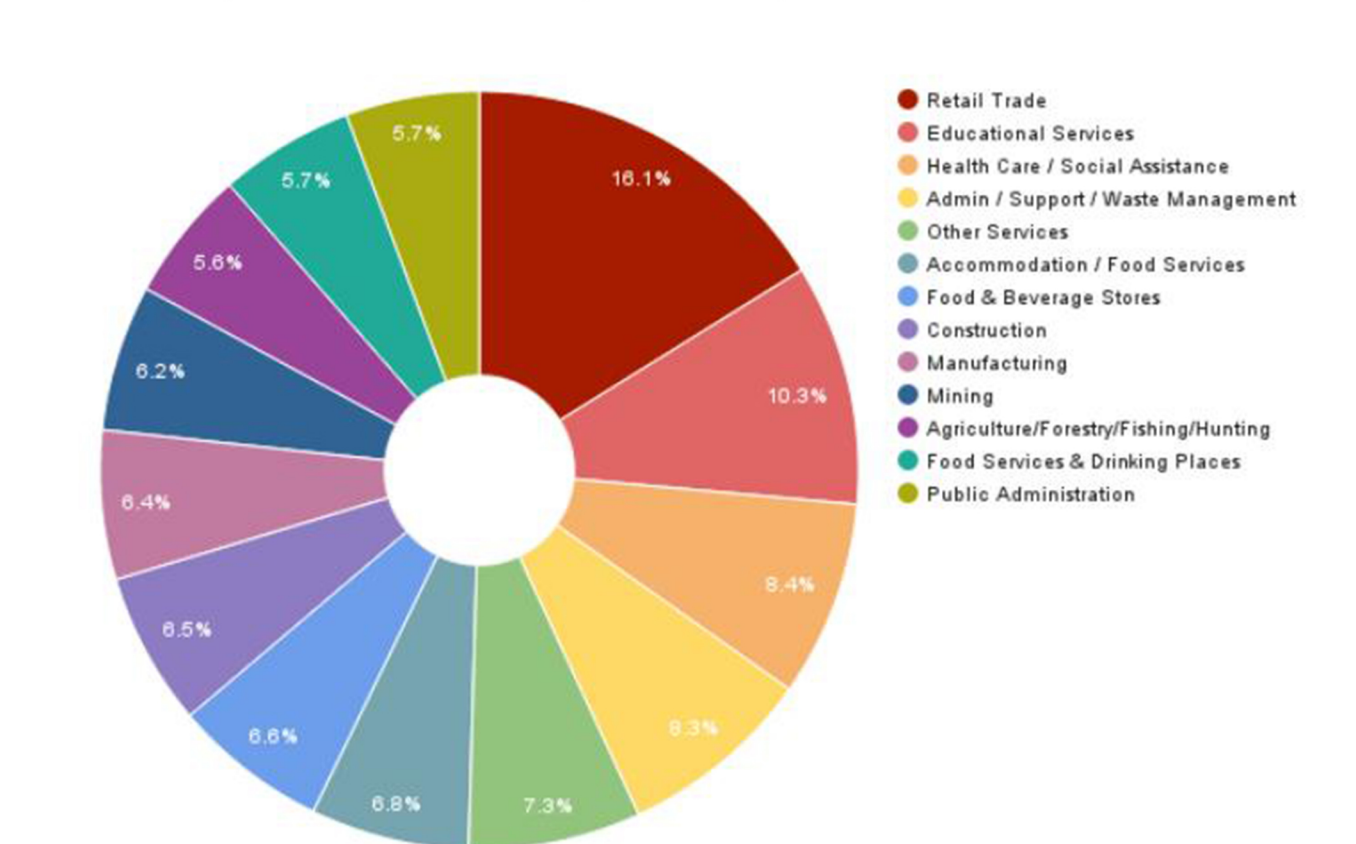


(Source: Census 2000 & 2010, 2009-2013 ACS)

## ECONOMIC STRUCTURES

### Main industries

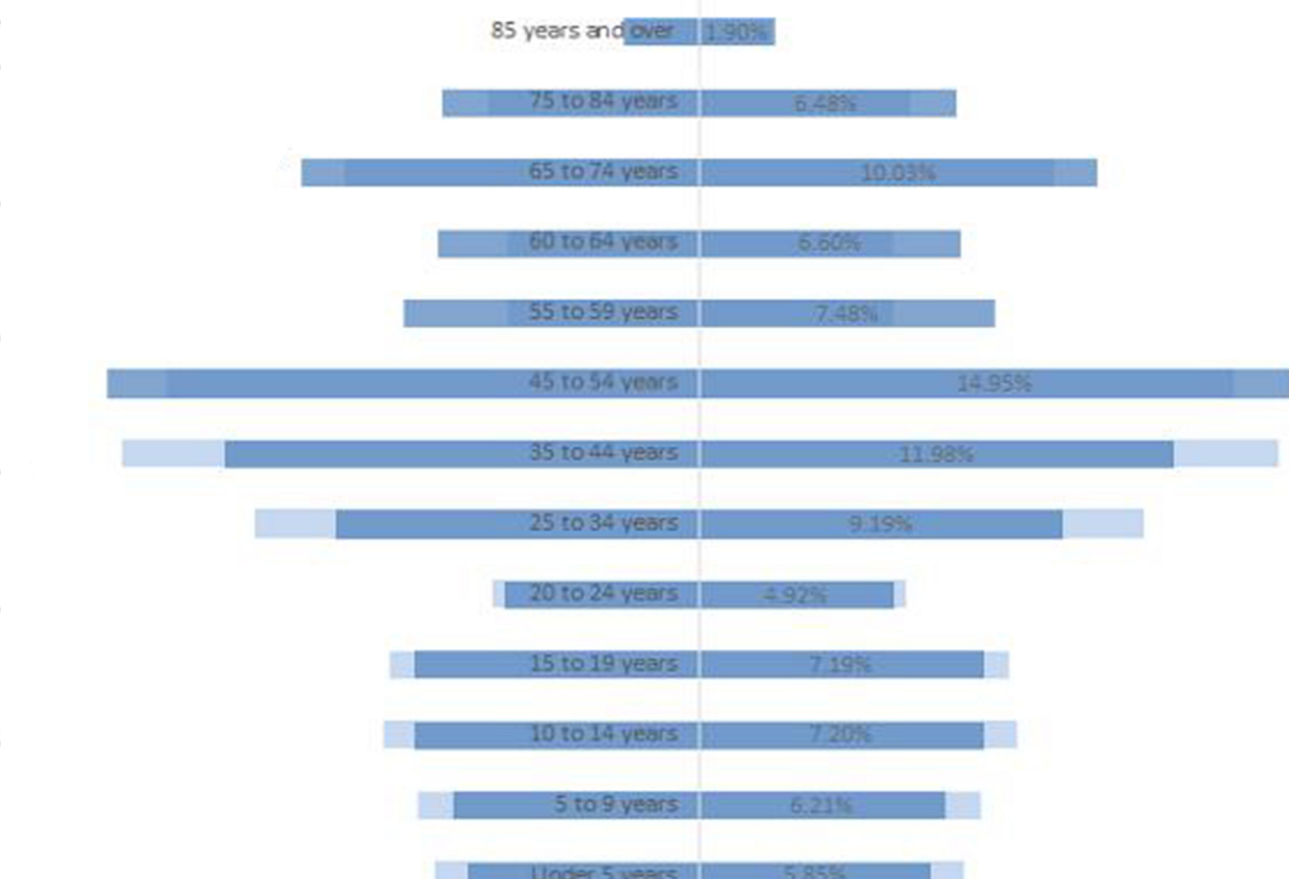
Retail trade, educational services; healthcare, administration.



(Source: Esri and Dun & Bradstreet 2014)

### Age Composition

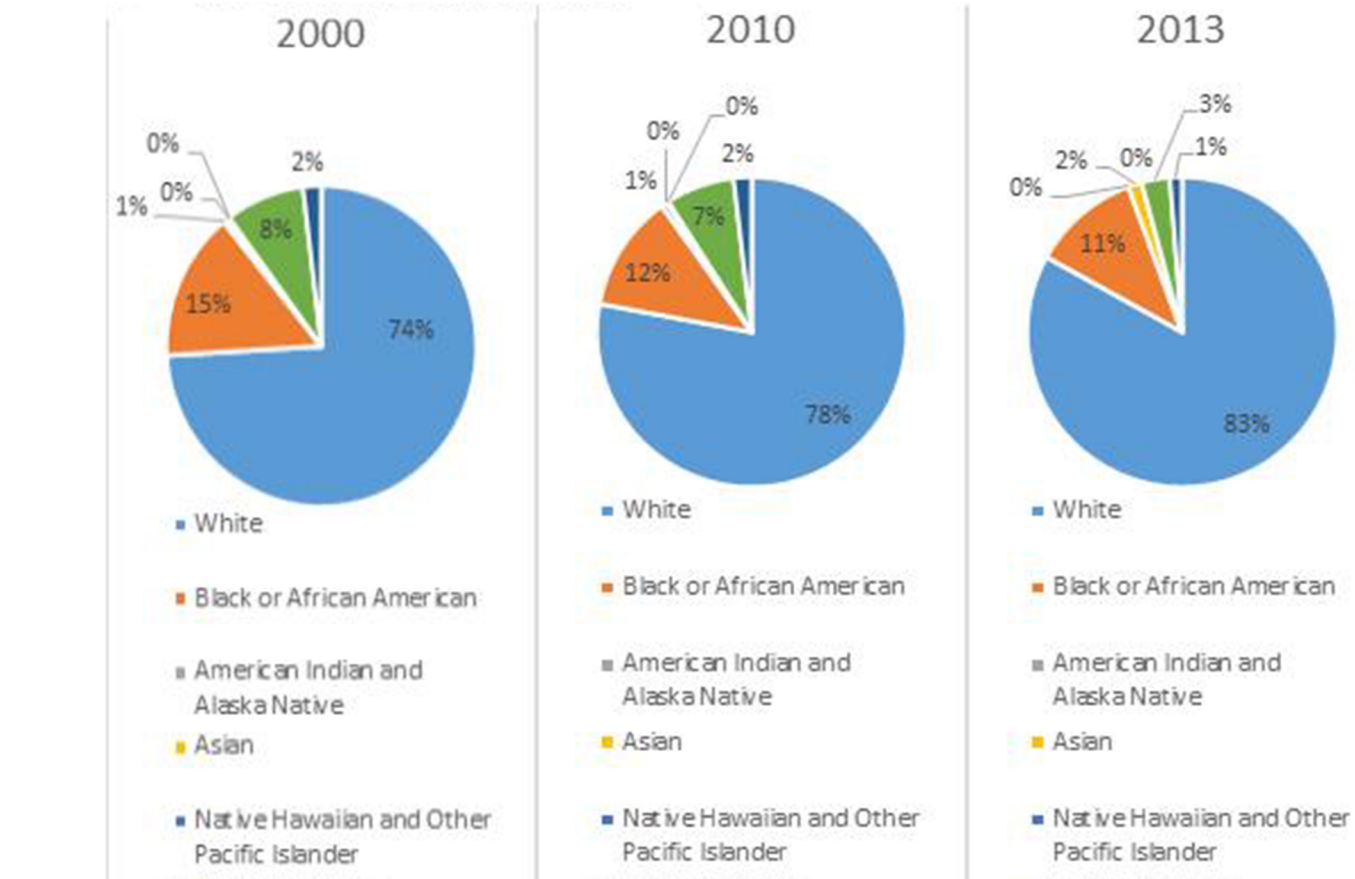
Population of 0-44 years old is declining; 45 years and over is increasing.



(Source: Census 2000, 2009-2013 ACS)

### Race Composition

Majority of population has remained White its ratio is increasing.



(Source: Census 2000, 2009-2013 ACS)

## LAND USE

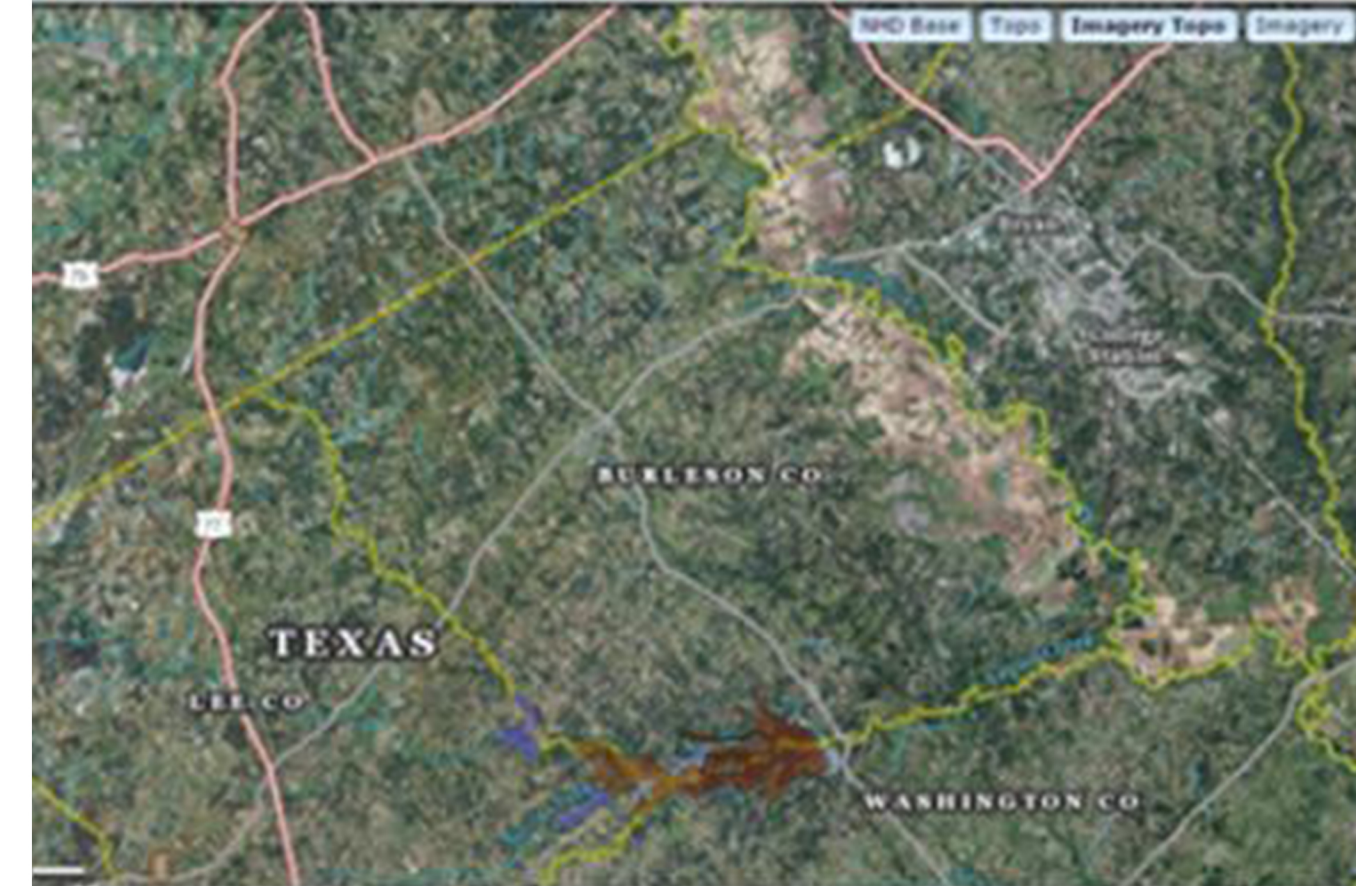
### Land Use

In Burleson County, 83% are farmland.



(Source: [www.google.com/maps](http://www.google.com/maps/))

### Protected Areas



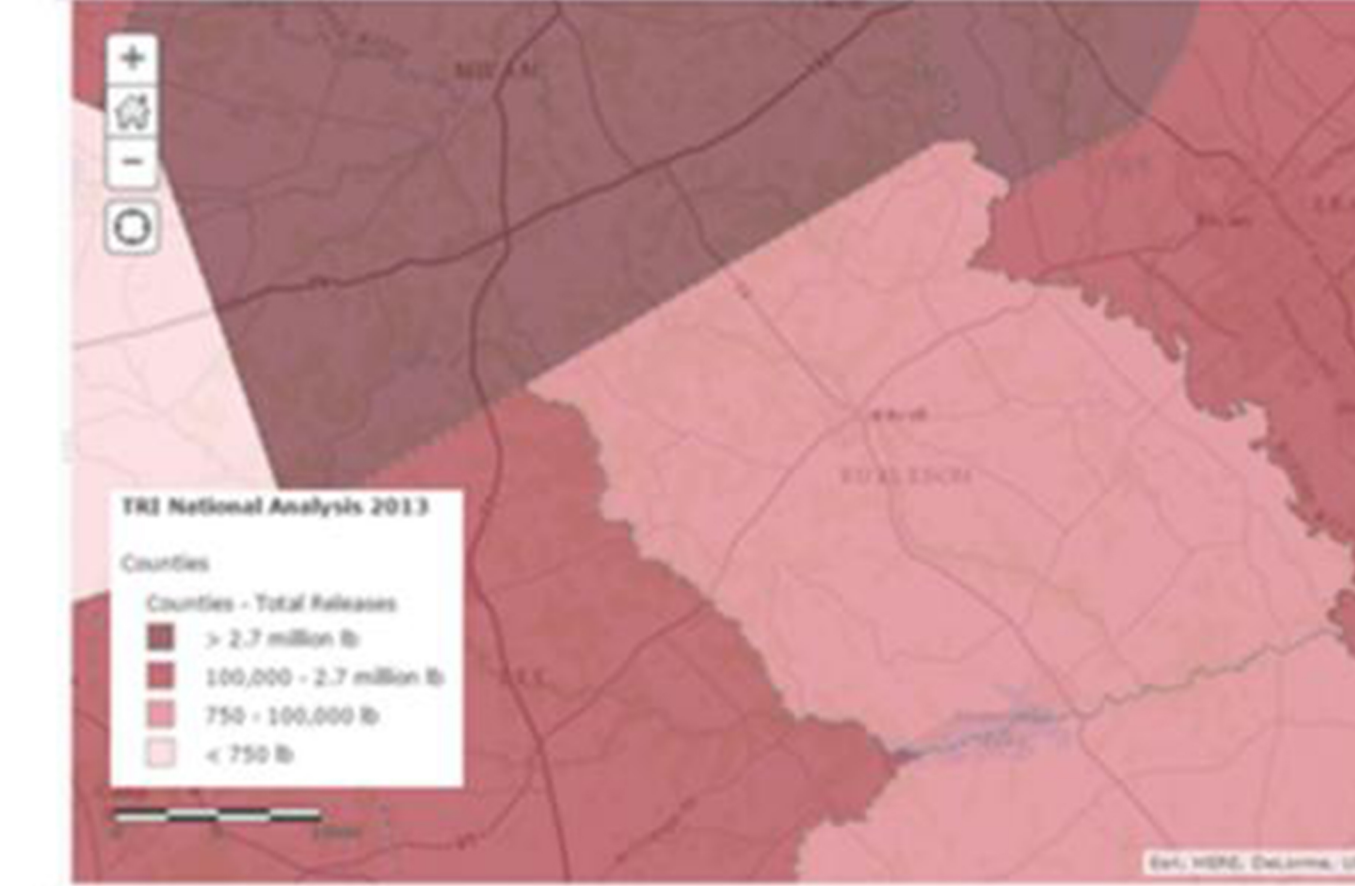
Source: USGS, National Map

### Flooding



Source: Burleson County Hazard Mitigation (2013)

### Pollutants



Source: EPA TRI Analysis 2013

## RECOMMENDATION

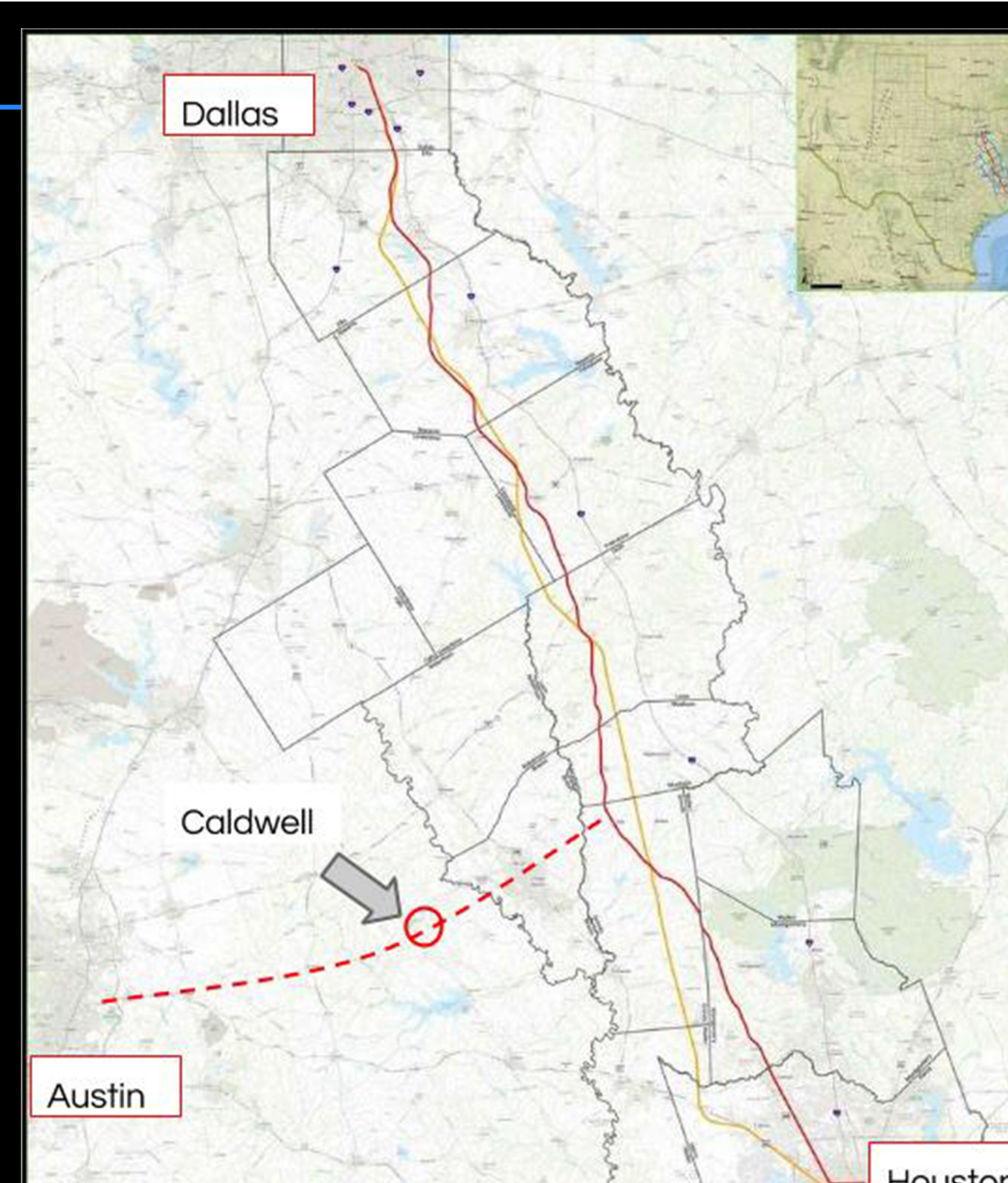
- ✓ Create a comprehensive plan with the vision of the people.
- ✓ Increase businesses and diversify economic activities to stop people from migrating for jobs.
- ✓ Improve infrastructure like schools, health services, and transportation.
- ✓ Address pollution before it is a bigger problem. Plans to retain people and utilise vacant housing
- ✓ Keep documents such as Hazard Mitigation Plan up to date and revised regularly.
- ✓ Public participation is the key to successful planning and implementation.

## SCENARIO

- ✓ Bullet train connection to Dallas & Houston
- ✓ Increase connectivity to employment centers

Texas Central is working with a Japanese train manufacturer and operator to debut the company's bullet train technology in Texas and cut the travel time between Houston and Dallas to 90 minutes. If the project moves forward, J.R. Central would sell its trains to the company and play an advisory role on the system's operations. Texas Central officials have said they hope to begin operations by 2021 and plan to do so without U.S. subsidies. <http://www.texastribune.org/2015/02/17/bullet-train-firm-reveals-dallas-houston-route/>

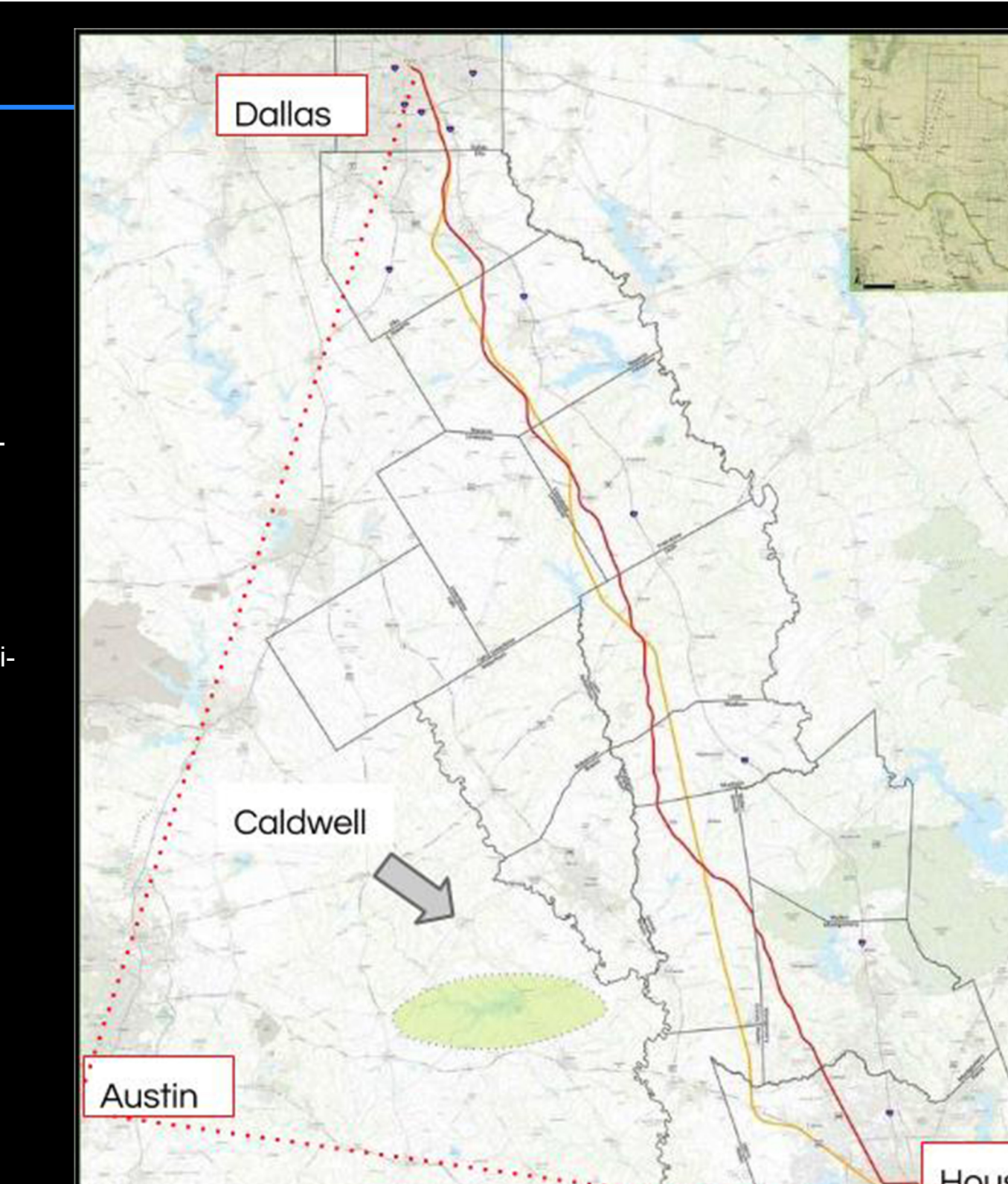
(Source: Texas Department of Transportation)



(Source: Texas Department of Transportation)

- ✓ Increasing attractiveness of Lake Somerville State Park
- ✓ Increase tourist industry / retirement
- ✓ Preserve the area around the lake as a future 'Central Park' of the anticipated Texas Triangle mega-agglomeration.

The Lake Somerville complex is located along the Presidential Corridor between Austin and College Station. Nearby attractions include Bastrop State Park, Buescher State Park, Stephen F. Austin State Park, Washington-on-the-Brazos State Historic Site, San Felipe State Historic Site, Bluebell Creamery, and Texas A&M University. <http://tpwd.texas.gov/state-parks/lake-somerville>



(Source: Texas Department of Transportation)