



# Burleson County

**STATE OF THE COMMUNITY REPORT**  
TIFFANY COUSINS, JEFFREY ENGLISH, YI MENG

TEXAS A&M UNIVERSITY | PLAN613 SPRING 2015

---

<sup>1</sup> Burleson County Seal: Edited from  
<http://www.co.burleson.tx.us/image/images/Burleson%20County%20Seal.JPG>

# **Table of Contents**

## **1. Introduction**

- a. Report Objectives
- b. County History
- c. County Profile

## **2. Current Infrastructure**

- a. Civil Systems
  - i. Police/Court Buildings
  - ii. Fire Protective Services
  - iii. Healthcare Systems
  - iv. Educational Systems
- b. Transportation Systems
  - i. Roads
  - ii. Railroads
  - iii. Airports
- c. Public Utilities Infrastructure
  - i. Water
  - ii. Wastewater
  - iii. Solid Waste/Garbage
  - iv. Natural Gas
  - v. Energy
  - vi. Telecommunications/Media
- d. Other Infrastructure

## **3. Population Characteristics**

- a. Totals by Census Tract
- b. Density
- c. Income Characteristics
- d. Age Pyramid
- e. Future Projections

## **4. Housing**

- a. Household Characteristics
- b. Housing Statistics

## **5. Economy**

- a. Economic Structure
  - i. County Location Quotients
  - ii. Inflow/Outflow Analysis

**6. Environment and Hazards**

- a. Terrain/Floodplains
- b. Watersheds
- c. Wildlife
- d. Soils
- e. Climate
- f. Hazards

**7. Land Uses**

- a. Existing Land uses
  - i. Somerville
- b. Future Land Uses
  - i. Suggestions

**8. SWOT Analysis****9. References/Works Cited****10. Appendices**

- a. NOAA 2014 Annual Weather Report for Burleson County, Texas

## INTRODUCTION

### Objectives

Our objective in this report is to find the current conditions/inventory of Burleson County resources and offer suggestions to improve the quality of life for its citizens.

### History

Burleson County was founded in 1846 and was created from Milam and Washington Counties. It is named after Edward Burleson, a General during the Texas Revolution, the third Vice President of the Republic of Texas, and later a State Senator for Texas (TSHA). The City of Caldwell was founded in 1830 and incorporated in 1891, it has been the County seat since 1846. Somerville was incorporated in 1880 as a railroad spur town. Snook was incorporated in 1972.

### County Profile

According to the US Census Bureau the county is 678 square miles in size. It is surrounded by Brazos County to the East, Washington County to the South, Lee County to the West, and Milam County to the North. The Brazos River creates the border to Brazos County and the Yegua Creek/Lake Somerville creates the border with Washington County. The East Yegua Creek creates the border with Lee County. The county is located 5 miles west of Bryan and College Station, 80 miles east of Austin, 80 miles south of Waco, 100 miles northwest of Houston, 140 miles northeast of San Antonio and 160 miles south of Dallas and Fort Worth providing this agriculturally based county an excellent strategic site within the population triangle, which accounts for two-thirds of Texas population. Burleson has three incorporated cities. The County Seat is located in Caldwell. The government format for the county is General Law with a Council and City Manager. The current County Judge is Mike Sutherland who has held the position since he took office in 2003. The population for the county in 2010 was 17,187. Burleson County is part of the Brazos Valley Council of Governments and is located within Texas State Senate District 18 and Texas State House District 13. The county is also under the US Congressional District 17.



## CURRENT INFRASTRUCTURE

### Civil Systems

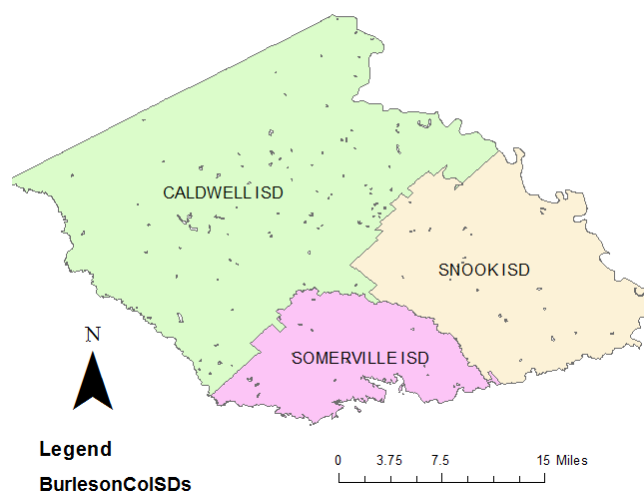
**Police/Judicial System:** Burleson County Sheriff's Office along with Caldwell Police Department and Somerville Police Department provide law enforcement services for the county. Burleson also has a County Jail located in Caldwell. The County Courthouse is located on Buck Street in Downtown Caldwell. Caldwell PD owns 5 vehicles and has 9 registered policemen and 11 reserve.

**Fire Protective Systems:** The City of Caldwell is the only full-time fire/rescue department in the county. Somerville, Snook, Black Jack (Rockdale), Cades Lake, Beaver Creek (near Caldwell), Deanville, Edwards Lake, Birch Creek, and Cooks Point fire crews are all Volunteer Departments (BVCOG). According to the 2008 county resource guide there are 22 volunteer firefighters in the county.

**Healthcare Systems:** There is only one hospital in the county and it is located on the Westside of Caldwell called the Burleson St. Joseph's Health Center. This hospital is a Level IV Trauma Center with 25 beds. The county also has two Health Resource Centers that direct citizens in the right direction for certain programs to meet their needs, these centers are located in Caldwell and Somerville (BHRC). The County also has 1 assisted living center for elderly residents. There are 3 pharmacies located in the county. Burleson has only 2 Dentists office (Both located in Caldwell) according to their County 2008 fact sheet (BurlesonCoFactSheet).

**Education Systems:** Burleson County is broken into three school districts: Caldwell ISD, Somerville ISD, and Snook ISD. Caldwell has High, Middle, Intermediate, and Elementary Schools. Somerville has High, Middle, and Elementary Schools. Snook only has Secondary and Elementary Schools in their district but they do K-12<sup>th</sup> grade. There are no colleges/universities located in Burleson County. The county has one library named for Harrie P. Woodson located in Caldwell (BurlesonCoFactSheet).

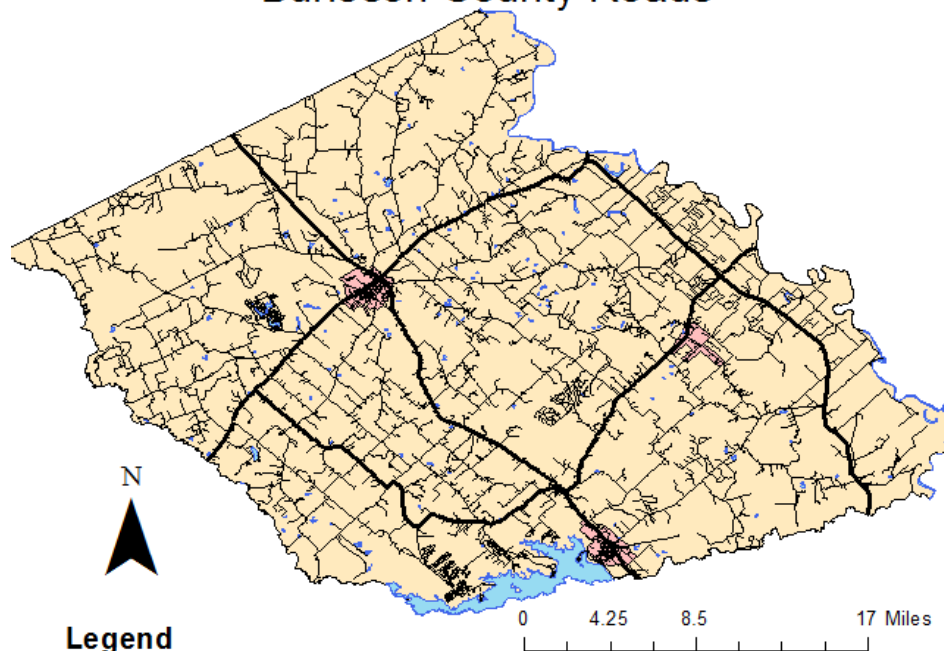
Burleson County Independent School Districts



## Transportation Systems

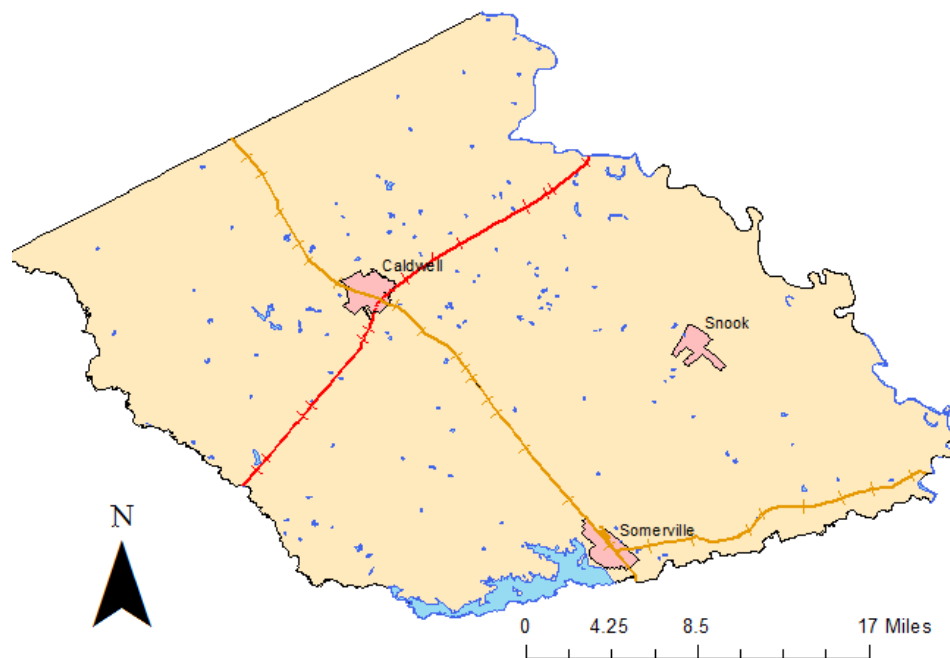
**Roads:** There are two major state highways that run through Burleson County, they both intersection in Caldwell, State highway 21 and State highway 36. Farm-to-market Road 50 and FM 60 are also major thoroughfares through Burleson County, mainly with traffic going to and from Bryan/College Station and Brenham. Burleson has 89 road bridges located within the county (BVCOG). Burleson has no public transit services and taxi services or Uber drivers based in the county. Brazos Transit District will provide services upon making a reservation. The average Travel time to work in Burleson County is 28.3 minutes (AmericanFactFinder).

### Burleson County Roads



**Rails:** There are two railroad corporations that operation lines through Burleson County. These lines are run by Union Pacific (UP) and Burlington Northern Santa Fe (BNSF). These are freight lines with no passenger services offered. Burleson County has 7 railroad bridges located within the county (BVCOG). Koppers Corp. has a railroad tie factory located in Somerville along the BNSF rail line (which operated the plant from 1897-1995) which generates rail traffic in the area (Koppers).

## Burleson County Railroads



### Legend

#### BurlesonCo Rail

—+—+ <all other values>

#### FENAME

—+—+ BNSF Rail (At\_Sf Rail)

—+—+ BNSF Rail (At and Sf Rail)

—+—+ BNSF Rail (Bn\_Sf Rail)

—+—+ Union Pacific Rail

**Airports:** There is one functional airport in the county, it is located southwest of Downtown Caldwell and called the Caldwell Municipal Airport. It has one



asphalt runway measured 3,252 feet long and 50 feet wide. According to the FAA it had 2,700 general aviation operations within the 12-month period ending December 30, 2013. The airport has 9 single engine aircraft based there (5010Web). The other airport is Weber Ranch located off Highway 21, it is basically a grass field runway, no paving anywhere.

Source: Google Maps

## Public Utilities Infrastructure

**Water:** County residents are supplied water from the cities of Caldwell, Somerville. There are also water supply corporations setup in the county including Lyons Water Supply Corp, Tunis Water Supply Corp, Clay Water Supply Corp, and Deanville Water Supply Corp to name a few. Bureson also grants permits for private property owners to drill their own wells. Bureson County is also supplying water to the San Antonio region from the Carrizo-Wilcox Aquifer for the next 30 years after a recent passage of legislation approving a 142 mile long pipeline costing around \$3.4 Billion (Huddleston).

**Wastewater:** There are three wastewater treatment plants in Bureson and they are located in Southeast of Caldwell, East of Somerville, and North of Snook. Sewage services are provided by the City of Caldwell, Somerville, and Snook, other than that septic tank usage is required. Somerville Wastewater Plant is shown right (Google Maps).



**Solid Waste:** Waste management is provided by the Cities of Caldwell and Somerville. Citizen Collection Stations are setup in each commissioner's precinct and restricted to Bureson County citizens only, one car per household. There are a total of 4 collection stations in the county. There are no standalone recycling centers in Bureson County.

**Natural Gas:** Gas services for residents and businesses in Caldwell and Somerville are provided by the Atmos Energy Company based out of Dallas. There is no service provided in Snook and rural areas unless they have personal storage tanks. There are numerous Natural Gas/Oil Pipelines running throughout the county.

**Energy:** Electricity in the county is provided by the City of Caldwell, Entergy (Somerville), and TXU (Snook).

**Telecommunications/Media:** The county Landline telephones are provided by Verizon Southwest, and TV Cable is provided by Suddenlink and CableTime or Satellite providers. Digital Antennas (DTV) are another method for television



services. All major cellular telephone providers have acceptable service coverages in the majority of Burleson County. There are no radio/television stations based in Burleson County, excluding the Chamber of Commerce having a public access channel. Burleson County newspapers include The Burleson County Tribune located in Caldwell (BurlesonCoFactSheet).

### Other Infrastructure

**Community Infrastructure:** The City of Caldwell owns a Civic Center on State Highway 21 or Presidential Corridor West. Caldwell also has a Fairgrounds located southeast of downtown on State Highway 36 or South Green Street.

**Parks:** There are 6 parks located within the Caldwell. There are 3 parks located along Lake Somerville; Welch Park within Somerville city limits, Big Creek Park, and Lake Somerville State Park/Trailway. These parks include boat launches. There is also a Country Club located in Caldwell that includes a nine-hole golf course.

**Churches:** There a total of 70 churches located throughout the county. The majority of them being of the Southern Baptist Convention denomination.

**Cemeteries:** There are 109 cemeteries within the county according to their county website (BurlesonCo). With the Masonic Cemetery in Caldwell being the largest by acreage according to Google Maps.

## POPULATION CHARACTERISTICS

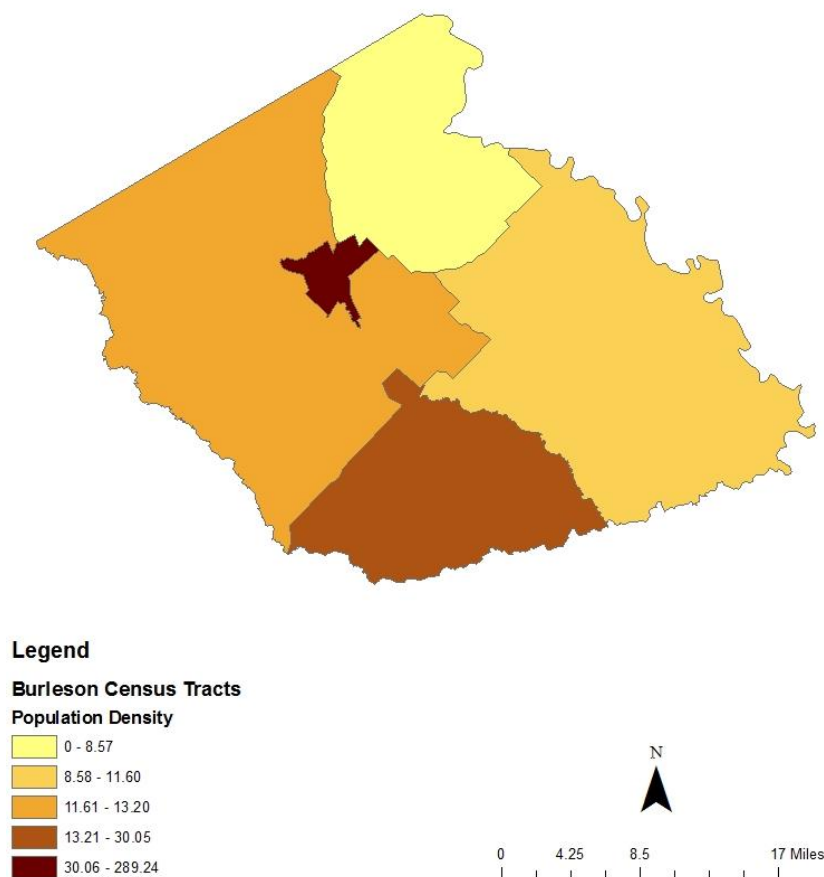
### Population Totals by Census Tract

Burleson County is broken down into 5 census tracts. Census Tracts 9701, 9702, 9703, 9704, and 9705 reside within Burleson County. Census tract 9703 focuses on the city of Caldwell. CT9701's population is 1,421. CT9702's population is 4,324. CT9703's population is 4,279. CT9704's population is 3,250 which contains Snook. CT9705's population is 3,913 which contains Somerville. All these figures are from the 2010 Census.

### Population Density

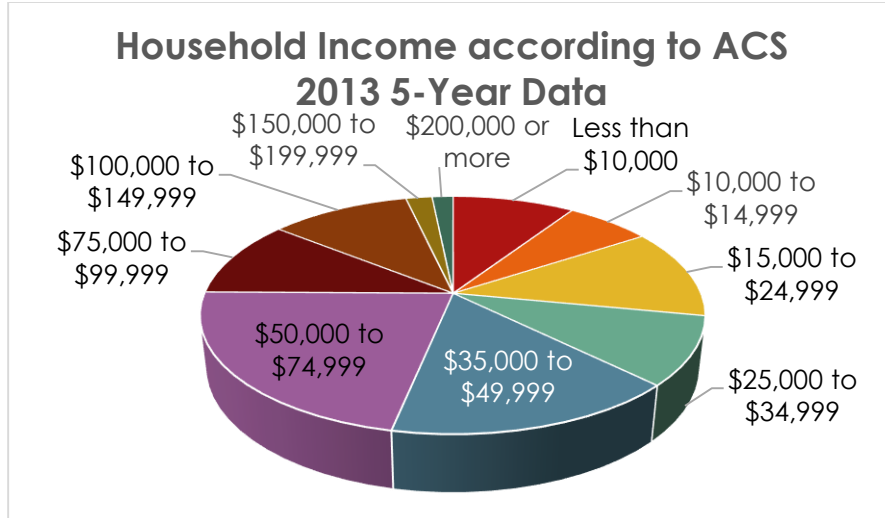
The population for Burleson County in 2010 was 17,187 and the county square mileage is 659.03. Dividing the total population over the county square miles gives us a population density of 26.1 people per square mile. The Map below shows Density figures from the 2010 Census.

## Burleson County Population Density

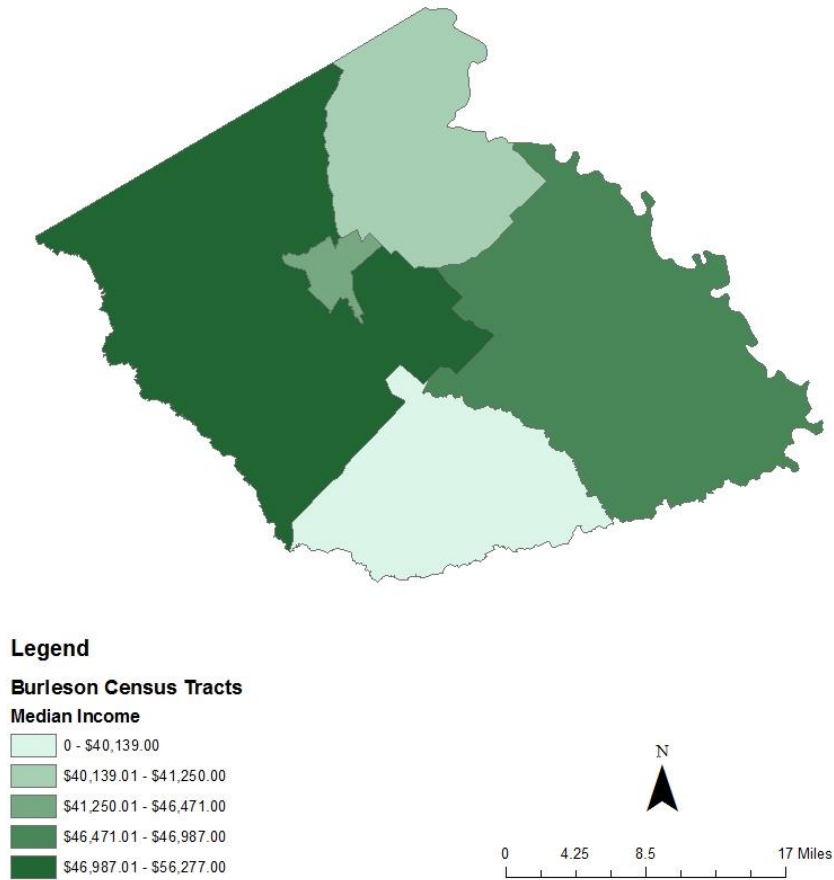


### Income Characteristics

Burleson County's Median or Average Household Income is \$45,651 according to 2013 ACS 5 Year data. 47% of Burleson County makes between \$25,000 and \$50,000 a year. Using the same data source, Texas has an Average Household Income of \$51,900 to show that Burleson is below the state average. Burleson has a Mean Household Income of \$56,682 compared to Texas's \$72,474. The Per Capita Income for the county is \$21,529 while Texas stands at \$26,019. Median Non-household Income comes in at \$23,203 for Burleson while \$32,354 for Texas. The average Social Security payout in Burleson is \$15,990 while the Texas Average is \$16,334 a year. The number of people with Foodstamps/SNAP Benefits in Burleson is 1,133 while Texas has 1,173,314 people. (AmericanFactFinder)

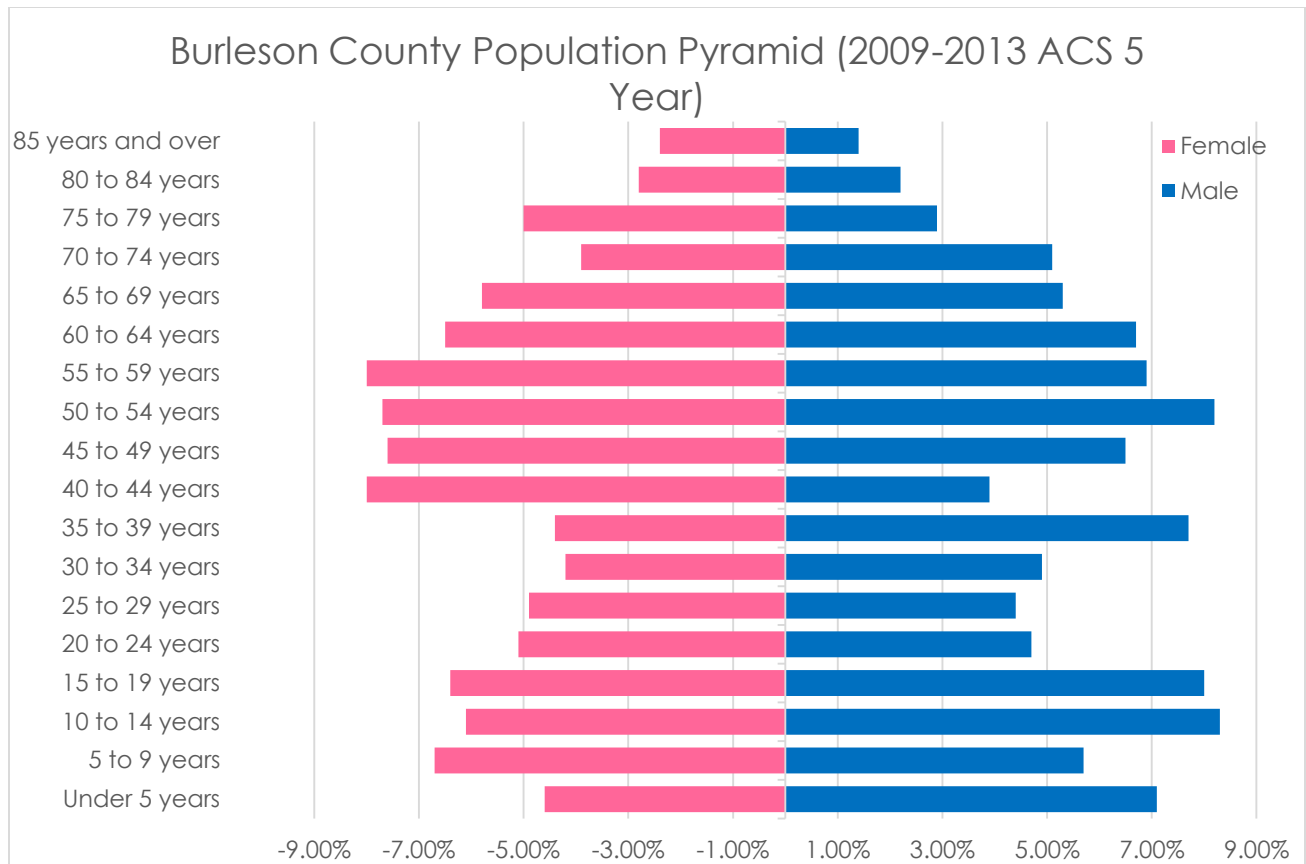


Burlison County Household Income



## Age Pyramid

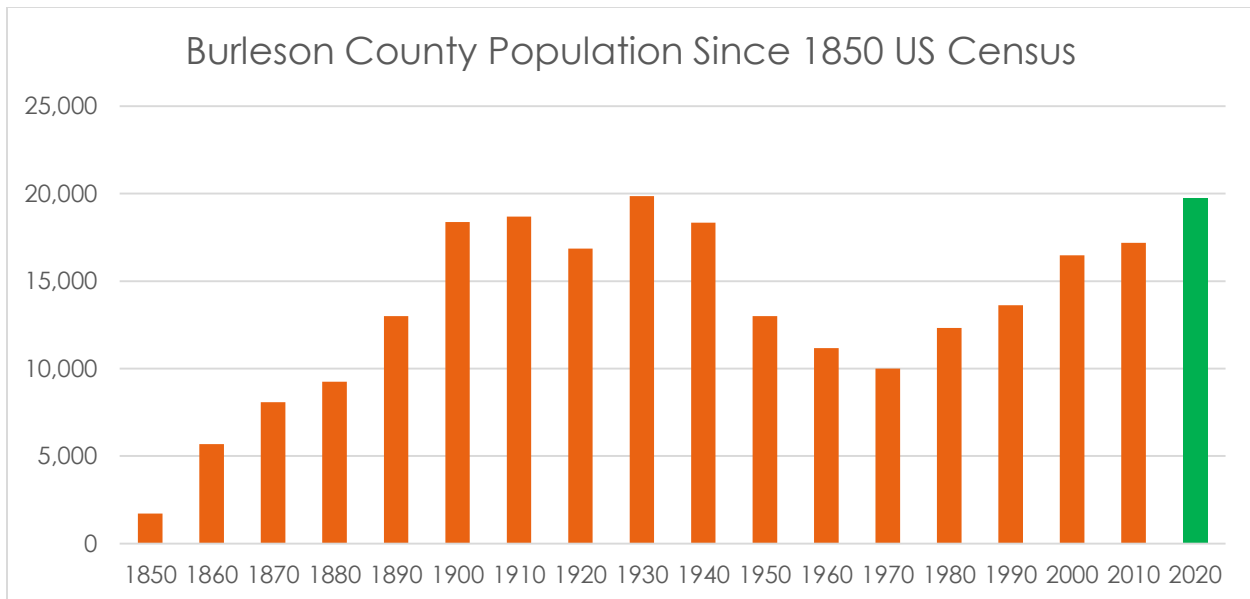
In the graph below, the majority of Burleson County's population is older than 40 years old and younger than 70 years old. These lines show just where the Baby Boomer's generation is located and how large of a group they are in the county compared to other age groups/generations. The average age is 33.6 years old.



The percentage figures for females are correct, just remove the negative signs.

## Future Projections

According to Census figures over the last 50 years, Burleson County has been growing in population unlike most rural areas who lose population every decade. Therefore using the average growth percentage (14.78%) for Burleson County (1970 to 2010) and the "current" 2010 population total (17,187) we estimate that Burleson County will have a population of 19,726 people in 2020.



## HOUSING

### Household Characteristics

There are a total of 6,258 households in Burleson County. Educational Attainment levels in Burleson County vary. The majority of residents according to 2013 ACS 5 Year data had earned their high school diplomas (4,482). The next largest group was those who had Some College (2,854) and after that citizens who had Some High School (1,630). Only 962 citizens had Bachelor Degrees. The Average number of individuals living in a household in Burleson County is 2.71 people. The Average family size for Burleson County is 3.27 people. There are 1,310 Veterans in the county according to ACS data, which is 10% of the county's population of 18 years and older. 13,798 people speak English Only in their homes while only 2,396 speak something other than English in their house (2,003 for Spanish). (AmericanFactFinder)

### Household Statistics

Housing Tenure for Burleson County for Owner Occupied units are 4,950 (79.1%) while Rental Occupied units are 1,308 (20.9%). The majority of housing units in Burleson County were built between 1980 and 1989 (1,890). The majority of housing in Burleson County has 5 rooms total (2,366) and 3 Bedrooms (4,058). The majority of Values for Houses in Burleson County fall in the \$50,000 to \$99,999 category (1,622) while less than \$49,999 came in at a close second (1,306). The Median Gross Rent for Burleson County is \$673 a month while the average for Texas is \$851. (AmericanFactFinder)

## ECONOMY

### Economic Structure

The major employers for Caldwell are Allied Precision, Halliburton, Caldwell ISD, City of Caldwell, and Wal-Mart. The major employers for Somerville are Somerville ISD, Kopper Industries, Citizens State Bank, B&B Grocery Store, Rhodes Building Systems, City of Somerville, and Corps of Engineers. The major employers for Snook are Snook ISD and the Slovacek Sausage Company (BurlsonCoFactSheet). Oil/Gas are the number one source of income in the county with Agriculture coming in at second on gross income with an annual income of more than \$30 million annually. 27% of the county is employed in some area of agriculture. Tourism is also a large industry with Lake Somerville providing opportunities for hunting, fishing, boating and other forms of recreation. Burlson has 4 Banks located in the county; Citibank, Prosperity Bank, Citizen State Bank, and the First Bank of Snook. The unemployment rate in Burlson County according to the US Bureau of Labor Statistics in December 2014 was 3.3%. The average for 2014 was 4.2% (USBLS).

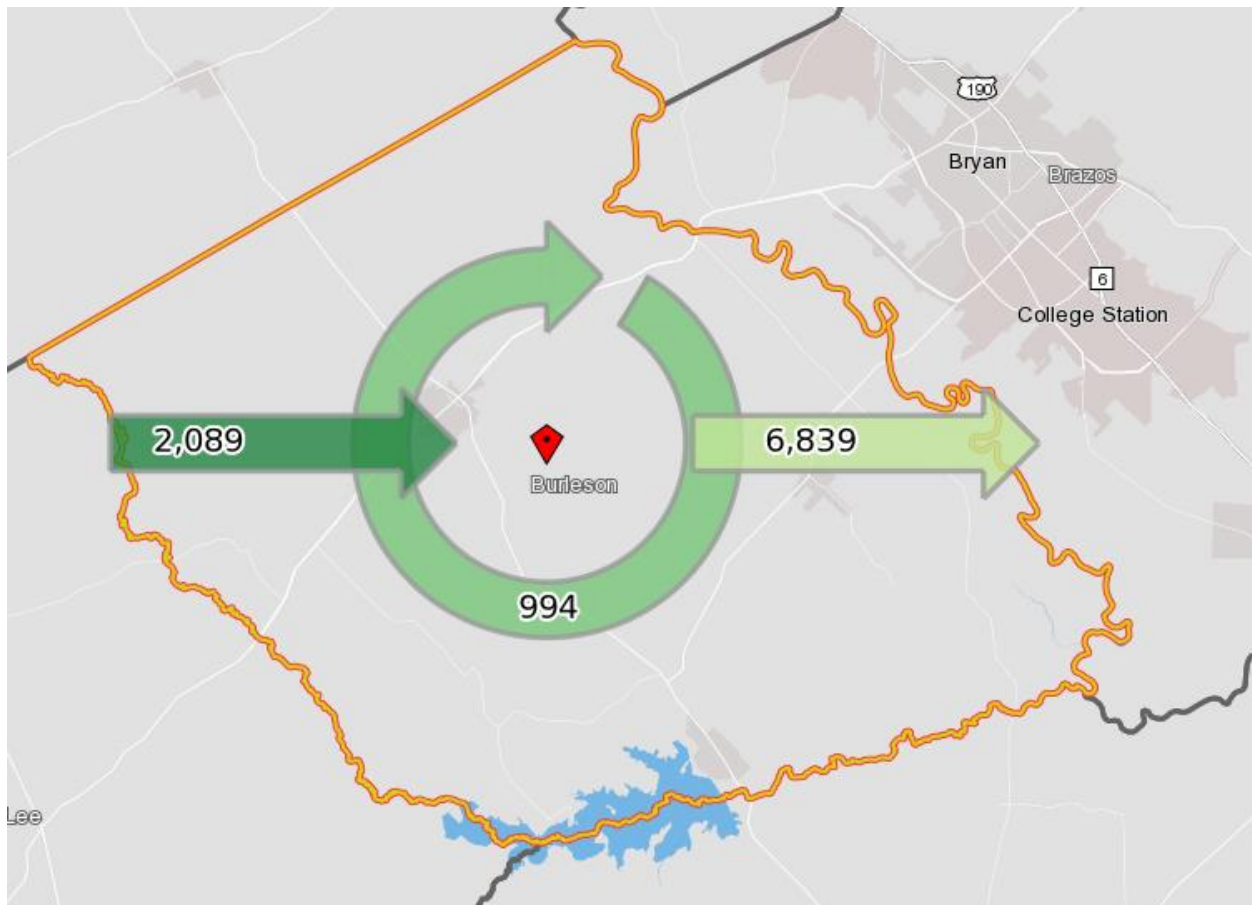
Location Quotients for Burlson Co. compared to Texas: ACS 5 year 2010 & 2013:

<b>Compared to Texas Benchmark</b>	<b>LQ 2010</b>	<b>LQ 2013</b>
<b>Industries</b>	<b>Burlson Co.</b>	<b>Burlson Co.</b>
<b>Agriculture, Forestry, Fishing, and Hunting</b>	3.14	4.13
<b>Mining and Extraction</b>	2.78	2.62
<b>Utilities</b>	3.06	1.10
<b>Construction</b>	1.29	1.24
<b>Manufacturing</b>	0.94	1.24
<b>Wholesale Trade</b>	0.38	0.64
<b>Retail Trade</b>	1.03	1.07
<b>Transportation and Warehousing</b>	0.79	0.83
<b>Information</b>	0.34	0.99
<b>Finance and Insurance</b>	0.61	0.47
<b>Real Estate and Rental and Leasing</b>	0.68	0.82
<b>Professional, Scientific, Technical Services</b>	0.31	0.67
<b>Management of Companies and Enterprises</b>	1.02	0.00
<b>Administrative and Support and Waste Management</b>	0.35	0.28
<b>Educational Services</b>	1.45	1.66
<b>Healthcare and Social Assistance</b>	0.80	0.82
<b>Arts, Entertainment, and Recreation</b>	0.71	0.08
<b>Accommodation and Food Services</b>	1.35	0.88
<b>Other Services (except Public Admin)</b>	1.01	1.56
<b>Public Administration</b>	0.92	0.84

Green rows indicate most likely Basic Employers, and white indicate non-basic employers. LQs > 1 are basic, LQs ≤ 1 are non-basic employers. Agriculture and Mining/Extraction have the largest share of employment in the county.

### Inflow/Outflow Analysis

Using Data from 2011 Job Counts, Burleson County has 6,839 people living in Burleson but working outside of the County and 2,089 employed in Burleson but living outside of Burleson County. A total of 994 live and work in the county.



2

<sup>2</sup> Source: <http://onthemap.ces.census.gov>

## ENVIRONMENT AND HAZARDS

### Terrain/Floodplain

The average elevation for Burleson County is around 350 feet above sea level (TSHA). Floodplains are generally located on the south and east sides of the county (where the Brazos River and major creeks are). Majority of the floodplains in the county are under the 100 year floodplains category. The county lies on top of the Carrizo-Wilcox Aquifer which supplies drinking water to the region.

### Watersheds

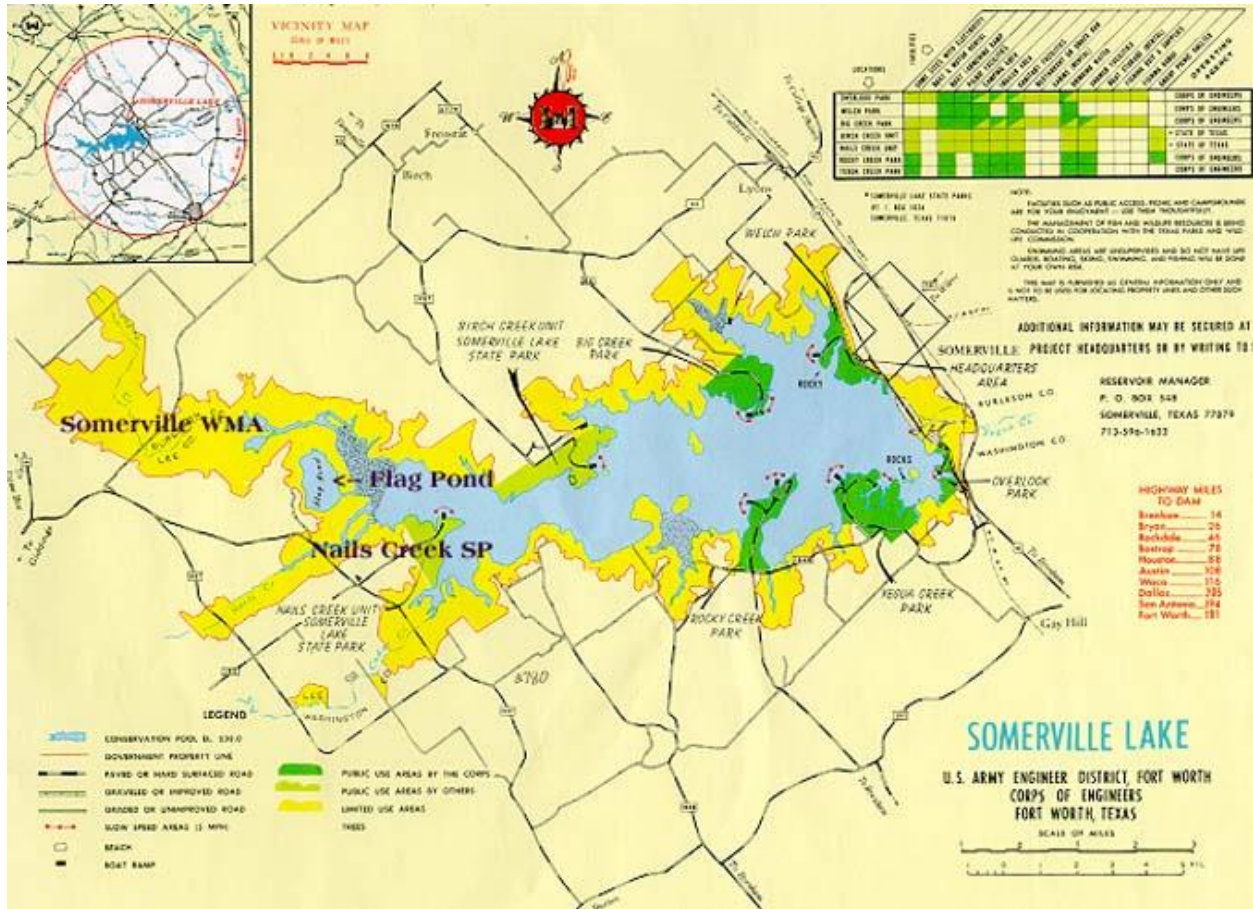
Burleson County crosses two watersheds. The first one is Lower Brazos-Little Brazos watershed (12070101) located on the East side of the county and the second is the Yegua watershed (12070102) located throughout the county draining southward toward Lake Somerville(EPA). Both watersheds reside in Texas and do not leave the state. The two watersheds are shown left in comparison to Burleson County's size (EPA).



### Wildlife

“Although bears, alligators, and buffaloes once roamed the area they disappeared in the nineteenth century, the county is still inhabited by many wild animal species, including white-tailed deer, coyotes, skunks, raccoons, and opossums, and such wild birds as the mourning dove and bobwhite quail; all find haven in the Somerville State Wildlife Management Area” (TSHA). This Management area is located West of Somerville and Lake Somerville (Shown below).





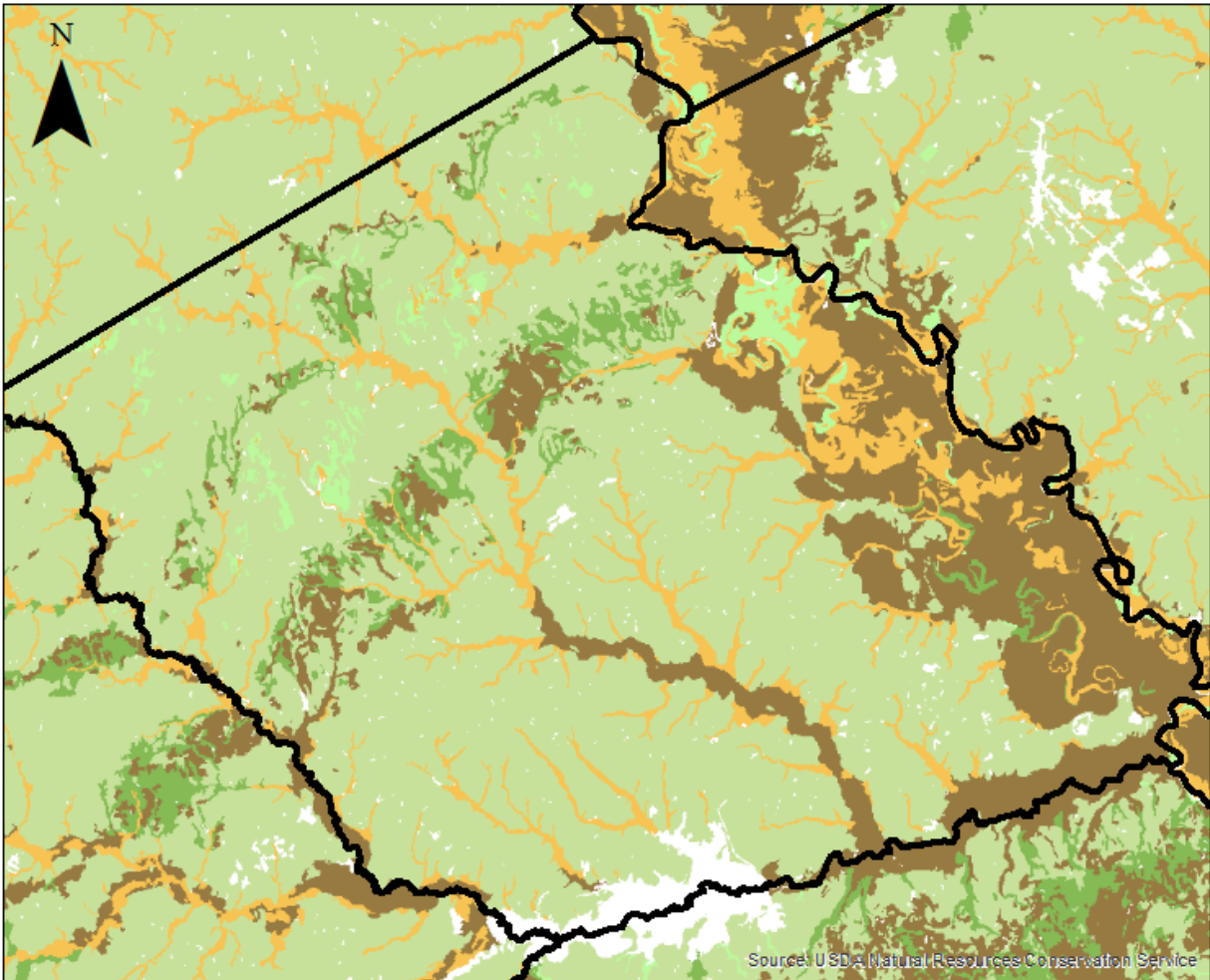
3

## Soils

According to the USGS, Burleson County has majority Alfisols along with Inceptisols, Vertisols, Entisols, and Mollisols. Alfisols type soils are generally for agriculture and forest covers. Inceptisols and Vertisols are generally found in river/creek beds. Entisols are terrible soil types for infrastructure development and remain underdeveloped in most of the world because of their poor saturation rates. Mollisols are small part of the soils in Burleson County, these soils are generally found under grasslands that have not been disturbed by agriculture.

<sup>3</sup> Source: <http://www.bafrenz.com/birds/Somer.htm>

# Burleson County Soils Map






## Legend

 counties

### Soil Survey Geographic

#### Dominant Order

-  Alfisols
-  Andisols
-  Aridisols
-  Entisols
-  Gelisols
-  Histosols
-  Inceptisols
-  Miscellaneous area
-  Mollisols
-  Oxisols
-  Spodosols
-  Ultisols
-  Vertisols
- Water

0 3.5 7 14 Miles



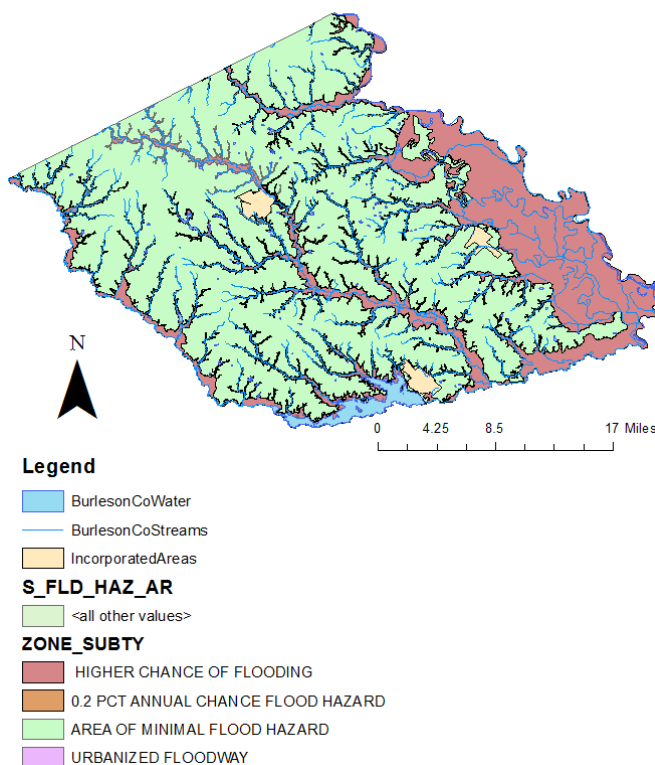
## Climate

According to the National Oceanic Atmospheric Administration (NOAA) Caldwell has no temperature readings only rainfall, so rainfall totals for Caldwell in 2014 were 26.97 inches. Readings came from the Caldwell Municipal Airport. Somerville has an average temperature of 68.4 F degrees for the year 2014. The average rainfall total for 2014 was 36.48 inches. Both readings come from the Somerville Dam site. There was 0.0 inches of snow accumulation in 2014 for both sites. The averages come from the months of January to November, December has not been completed yet. NOAA 2014 complete report is shown in Appendix A.

## Hazards

**Natural:** According to the Burleson County Hazard Mitigation Plan 2013-2018 prepared by BVCOG, Burleson County is susceptible to winter storms, thunderstorm winds, floods, tornadoes, hailstorms, wildfires, droughts, excessive heatwaves, and hurricanes. Burleson County has been declared a Federal Disaster Area by the President 4 times. This plan also has contingencies for possible dam failures. The major dam of course being located in Somerville for Lake Somerville (BVCOG).

Burleson County Floodplains

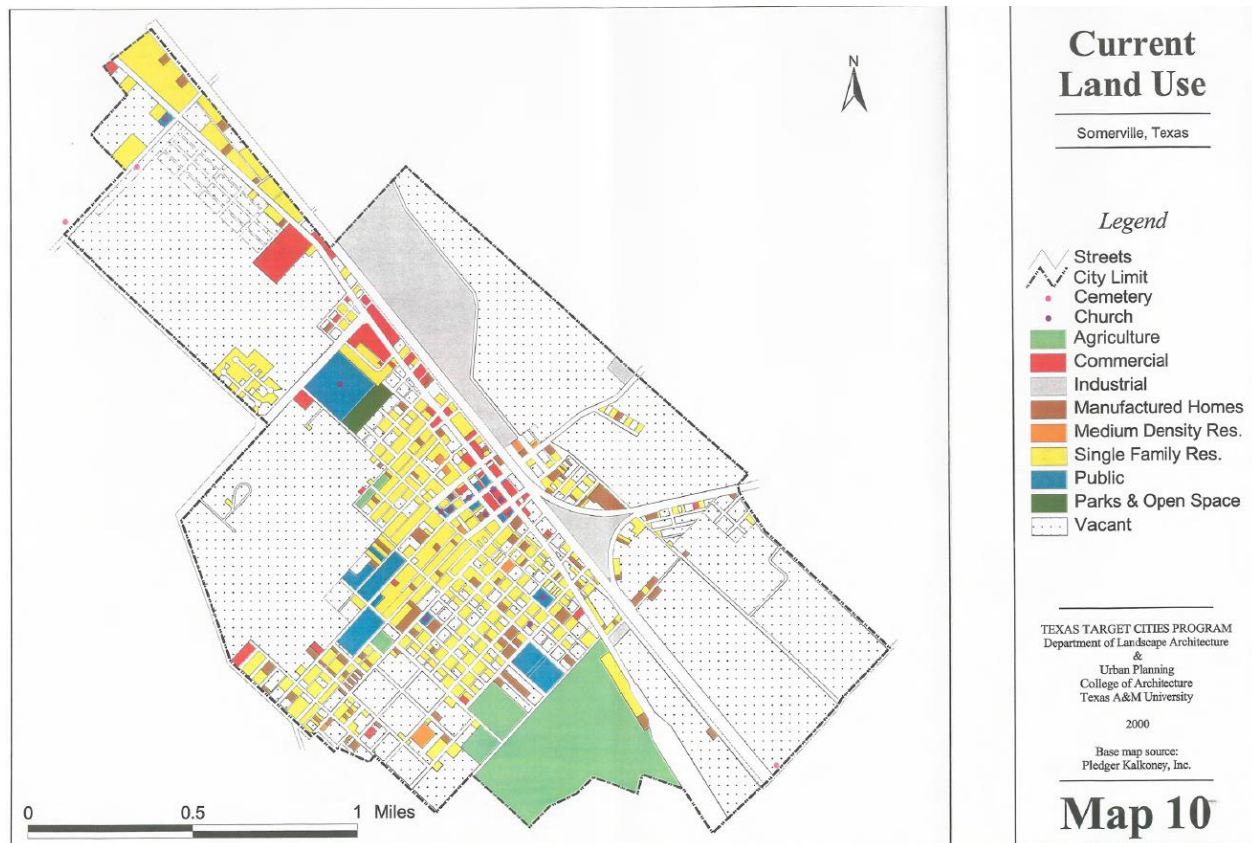


**Man-made:** The then Santa Fe Railroad tie factory (Now owned by Koppers) located in Somerville has had many chemical spills and introduced pollution to the residents of Somerville causing cancer rates to skyrocket (Spivak). Known chemicals the plant dealt with are Arsenic, Dioxins, and Polycyclic Aromatic Hydrocarbons (all cancer causing chemicals). Not only are these chemicals in the air, they are also in the ground water. According to the US Dept. of Health and Human Services, Sherman Wire and ZTT Minerals (Both of Caldwell) are also polluters in Burleson County (TOXMAP).

## LAND USES

### Existing Land Uses

The county of course has no zoning ordinances but the individual incorporated cities should. According to the Somerville Comprehensive Plan done by the Texas Target Communities program, the land uses are broken down into several categories. The most prominent land use in Somerville is Single-family housing with 11.98% of the city or 183.92 acres. The second most use was Agricultural at 7.58% or 116.21 acres (SomervilleCompPlan2020). There are no land use maps for the cities of Caldwell or Snook that we know of.



### Suggestions for Future Land Use

One suggestion for Burleson County is to make sure the incorporated cities in the county post their land use maps online and make access easier (If they have zoning at all). Another could be to increase mix use zoning in their downtowns to revitalize their communities since they are slowly sprawling along either State Hwy 21 or State Hwy 36. Snook should consolidate their resources and create the center of town somewhere because right now Snook is just a bunch of buildings/homes spaced out around the local school and road intersection. One could drive right through it and not even know it was a town.

### SWOT ANALYSIS

<p><b>Strengths:</b></p> <ul style="list-style-type: none"> <li>• Lake Somerville</li> <li>• Proximity of being 200 miles from 80% of the population of Texas</li> <li>• High Quality ISDs</li> <li>• Highly Organized local gov'ts</li> <li>• Strong Hazard Mitigation Plan</li> <li>• Strong Comprehensive Plan for Somerville made by TTC</li> </ul>	<p><b>Weaknesses:</b></p> <ul style="list-style-type: none"> <li>• Koppers Plant Pollution</li> <li>• Only 1 Hospital</li> <li>• Only 1 Small Airport</li> <li>• No Recycling Centers</li> <li>• No Community Colleges or Centers of Higher Education</li> <li>• Lack of Sidewalks in Urban Areas</li> <li>• Lack of Public Transit</li> </ul>
<p><b>Opportunities:</b></p> <ul style="list-style-type: none"> <li>• San Antonio Waterline Deal</li> <li>• Oil/Gas Extraction Industry</li> <li>• Texas A&amp;M University O.D. Butler Animal Science Complex &amp; University Farm</li> </ul>	<p><b>Threats:</b></p> <ul style="list-style-type: none"> <li>• Possibility of losing Population to Brazos (B/CS) or Washington Counties (Brenham)</li> <li>• Losing Jobs to Surrounding Counties</li> <li>• Lots of Retail leakage to surrounding areas according to Retail Gap Analysis (Farmer, Aaron)</li> </ul>

## REFERENCES

AmericanFactFinder/QuickFacts. US Census Bureau.

<http://quickfacts.census.gov/qfd/states/48/480511k.html>

BHRC. Burleson Health Resource Center.

<http://www.behealthybrazosvalley.org/health-resource-centers/burleson-health-resource-center/>

BurlesonCo.

<http://co.burleson.tx.us/>

BurlesonCoFactSheet.

<http://www.burlesoncountytexas.com/visit/Burleson%20County%20Resource%20Guide%202008.pdf>

BVCOG Burleson Hazard Mitigation Plan

[http://www.co.burleson.tx.us/image/files/Emergency%20Management/Burleson%20County%20Mitigation%20Plan%20APA%202013%20\(3\).pdf](http://www.co.burleson.tx.us/image/files/Emergency%20Management/Burleson%20County%20Mitigation%20Plan%20APA%202013%20(3).pdf)

Climate. (Also shown below in Appendix A)

NOAA Annual Climatological Summary for 2014. Published 9 April 2015.

EPA. Environmental Protection Agency.

[http://cfpub.epa.gov/surf/county.cfm?fips\\_code=48051](http://cfpub.epa.gov/surf/county.cfm?fips_code=48051)

Farmer, Aaron. TheRetailCoach. 2009 Nov 6.

[http://www.co.burleson.tx.us/file/Caldwell\\_RGA\\_110609\\_cs3.pdf](http://www.co.burleson.tx.us/file/Caldwell_RGA_110609_cs3.pdf)

Huddleston, Scott. MySanAntonio. 2014 Oct 30.

<http://www.mysanantonio.com/news/local/article/San-Antonio-City-Council-approves-pipeline-to-5858756.php>

Koppers.

<http://www.koppers.com/locations/somerville-plant>

Somerville Comp Plan 2020. Texas Target Communities Program at TAMU. 2000.

<http://lakesomervilletexas.com/wp-content/uploads/2013/06/Somerville-State-of-the-City-Report-2000.pdf>

Spivak, Todd. Houston Press. 2007 Dec 5.

<http://www.houstonpress.com/2007-12-06/news/toxic-town/full/>

TOXMAP. US Department of Health and Human Services.

<http://toxmap.nlm.nih.gov/toxmap/flex/>

TSHA. Texas State Historical Association.

<https://tshaonline.org/handbook/online/articles/hcb18>

USBLS. US Bureau of Labor Statistics.

[https://www.google.com/publicdata/explore?ds=z1ebjpgk2654c1\\_&met\\_y=unemployment\\_rate&idim=county:CN4805100000000&fdim\\_y=seasonality:U&hl=en&dl=en#!ctype=l&strail=false&bcs=d&nسلم=h&met\\_y=unemployment\\_rate&fdim\\_y=seasonality:U&scale\\_y=lin&ind\\_y=false&rdim=country&idim=county:CN4805100000000&ifdim=country&tstart=1389679200000&tend=1418536800000&hl=en\\_US&dl=en&ind=false](https://www.google.com/publicdata/explore?ds=z1ebjpgk2654c1_&met_y=unemployment_rate&idim=county:CN4805100000000&fdim_y=seasonality:U&hl=en&dl=en#!ctype=l&strail=false&bcs=d&nسلم=h&met_y=unemployment_rate&fdim_y=seasonality:U&scale_y=lin&ind_y=false&rdim=country&idim=county:CN4805100000000&ifdim=country&tstart=1389679200000&tend=1418536800000&hl=en_US&dl=en&ind=false)

5010Web.

<http://www.gcr1.com/5010web/airport.cfm?Site=RWV&AptSecNum=2>

APPENDICES

A. NOAA 2014 Annual Weather Report for Burleson County, Texas.

Caldwell

U.S. Department of Commerce  
National Oceanic & Atmospheric Administration  
National Environmental Satellite, Data, and Information Service  
Elev: 365 ft. Lat: 30.533° N Lon: 96.702° W  
Station: CALDWELL, TX US COOP:411314

Annual Climatological Summary  
(2014)  
Generated on 04/09/2015

National Climatic Data Center  
151 Patton Avenue  
Asheville, North Carolina 28801

Date		Temperature (F)											Precipitation (inches)												
Elem->	MMXT	MMNT	MNTM	DPNT	HTDD	CLDD	EMXT		EMNT		DT90	DX32	DT32	DT00	TPCP	DPNP	EMXP	TSNW	MXSD		DP01	DP05	DP10		
Month	Mean Max.	Mean Min.	Mean	Depart. from Normal	Heating Degree Days	Cooling Degree Days	Highest	High Date	Lowest	Low Date	Number Of Days				Total	Depart. from Normal	Greatest Observed		Snow, Sleet			Number Of Days			
											Max >=90	Max <=32	Min <=32	Min <=0			Day	Date	Total Fall	Max Depth	Max Date	>=.10	>=.50	>=1.0	
1															1.06		0.45	09	0.0				3	0	0
2															0.54		0.30	26	0.0				2	0	0
3															1.56		0.60	04	0.0				4	1	0
4															0.97		0.72	15	0.0				2	1	0
5															6.20		2.40	27	0.0				5	3	3
6															1.81		1.12	10	0.0				3	2	1
7															2.54		0.84	18	0.0				5	3	0
8															1.53		1.01	29	0.0				2	2	1
9															3.88		1.20	19	0.0				8	3	2
10															1.76		1.01	03	0.0				3	1	1
11															5.12		2.45	23	0.0				4	3	3
12																									
Annual															26.97*		2.45*	Nov*	0.0*				41*	19*	11*

Notes

- (blank) Data element not reported or missing.
- + Occurred on one or more previous dates during the month. The date in the Date field is the last day of occurrence. Used through December 1983 only.
- A Accumulated amount. This value is a total that may include data from a previous month or months or year (for annual value).
- B Adjusted total. Monthly value totals based on proportional available data across the entire month.
- E An estimated monthly or annual total.
- X Monthly means or totals based on incomplete time series. 1 to 9 days are missing. Annual means or totals include one or more months which had 1 to 9 days that were missing.
- T Trace of precipitation, snowfall, or snowdepth. The precipitation data value will equal zero.
- Elem Element types are included to provide cross-reference for users of the NCDC CDO system.
- Station Station is identified by: COOP ID, Station Name, State
- S Precipitation amount is continuing to be accumulated. Total will be included in a subsequent monthly or yearly value. Example: Days 1-20 had 1.35 inches of precipitation, then a period of accumulation began. The element TPCP would then be 00135S and the total accumulated amount value appears in a subsequent monthly value.
- \* Annual value missing; summary value computed from available month values.

Somerville

U.S. Department of Commerce  
National Oceanic & Atmospheric Administration  
National Environmental Satellite, Data, and Information Service  
Elev: 263 ft. Lat: 30.337° N Lon: 96.540° W  
Station: SOMERVILLE DAM, TX US COOP:418446

Annual Climatological Summary  
(2014)  
Generated on 04/09/2015

National Climatic Data Center  
151 Patton Avenue  
Asheville, North Carolina 28801

Date		Temperature (F)											Precipitation (inches)												
Elem->	MMXT	MMNT	MNTM	DPNT	HTDD	CLDD	EMXT		EMNT		DT90	DX32	DT32	DT00	TPCP	DPNP	EMXP	TSNW	MXSD		DP01	DP05	DP10		
Month	Mean Max.	Mean Min.	Mean	Depart. from Normal	Heating Degree Days	Cooling Degree Days	Highest	High Date	Lowest	Low Date	Number Of Days				Total	Depart. from Normal	Greatest Observed		Snow, Sleet			Number Of Days			
											Max >=90	Max <=32	Min <=32	Min <=0			Day	Date	Total Fall	Max Depth	Max Date	>=.10	>=.50	>=1.0	
1	59.4X	32.4X	45.9	-3.0		0	74	21	13	07	0	0	15	0	2.00	-0.97	0.82	09	0.0				4	2	0
2	61.7		50.0	-2.4	414	10	83	21	23	06	0	1	8	0	1.59	-1.32	0.72	26	0.0				4	1	0
3	68.5		55.0	-4.6	308	14	85	29	20	03	0	0	5	0	1.96	-1.09	0.94	09	0.0				4	2	0
4	79.3	54.8	67.0	0.0	76	142	93	29	35	15	3	0	0	0	1.26	-1.47	0.42	15	0.0				4	0	0
5	85.8X	62.4X	74.1	-0.6			93	31	42	01	8	0	0	0	11.77	7.81	4.20	13	0.0				6	5	4
6	92.2		82.2	1.3	0	528	95	25	64	11	26	0	0	0	0.75	-3.60	0.42	10	0.0				2	0	0
7	95.8	72.4	84.1	0.3	0	598	101	29	66	12	28	0	0	0	2.00	0.11	0.96	06	0.0				3	2	0
8	98.9X	73.2X	86.0	1.8	0		103	26	64	13	28	0	0	0	1.17X	-1.33	1.04	01	0.0				2	1	1
9	92.7	68.3	80.5	2.3	0	472	101	06	59	24	22	0	0	0	6.22	3.03	3.76	13	0.0				6	2	2
10	86.1X	59.9X	73.0	4.1	0		95	03	51	15	7	0	0	0	2.23	-2.24	0.85	14	0.0				4	2	0
11	67.0X	41.6X	54.3	-5.2			83	05	25	17	0	0	4	0	5.48	1.95	2.00	05	0.0				4	3	3
12																									
Annual	80.7*	58.1*	68.4*		798*	1764*	103*	Aug*	13*	Jan*	122*	1*	32*	0*	36.43*		4.20*	May*	0.0*				43*	20*	10*

Notes

- (blank) Data element not reported or missing.
- + Occurred on one or more previous dates during the month. The date in the Date field is the last day of occurrence. Used through December 1983 only.
- A Accumulated amount. This value is a total that may include data from a previous month or months or year (for annual value).
- B Adjusted total. Monthly value totals based on proportional available data across the entire month.
- E An estimated monthly or annual total.
- X Monthly means or totals based on incomplete time series. 1 to 9 days are missing. Annual means or totals include one or more months which had 1 to 9 days that were missing.
- T Trace of precipitation, snowfall, or snowdepth. The precipitation data value will equal zero.
- Elem Element types are included to provide cross-reference for users of the NCDC CDO system.
- Station Station is identified by: COOP ID, Station Name, State
- S Precipitation amount is continuing to be accumulated. Total will be included in a subsequent monthly or yearly value. Example: Days 1-20 had 1.35 inches of precipitation, then a period of accumulation began. The element TPCP would then be 00135S and the total accumulated amount value appears in a subsequent monthly value.
- \* Annual value missing; summary value computed from available month values.