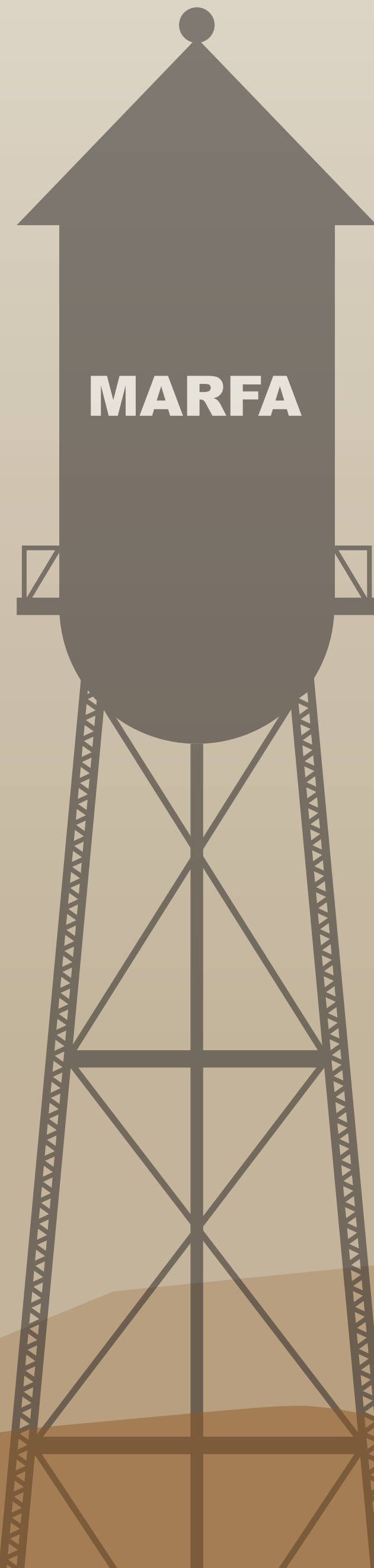
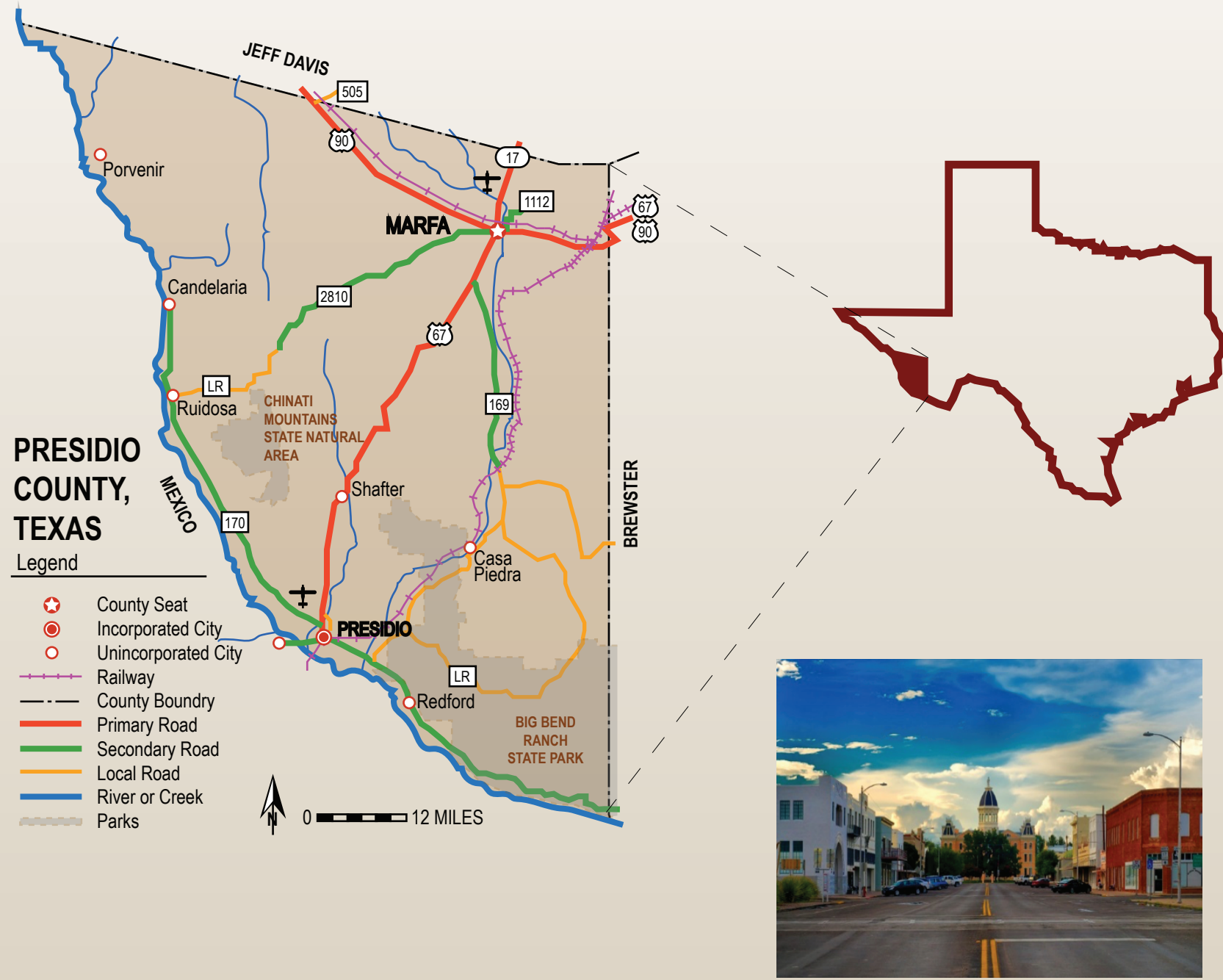


# PRESIDIO COUNTY, TEXAS

## State of the Community



### Presidio County, TX

Located in the Trans-Pecos region and partially in the Chihuahuan Desert, Presidio County was formed from Bexar County in 1850 and was originally the largest county in the US covering some 12,000 square miles. The boundaries were changed in 1883 dividing it into 3 other counties giving way to its current shape, covering 3,856 square miles making it the fourth largest county in Texas. The population fluctuated with the coming and going of US Troops supported at two Army bases in the county from World War I to shortly after World War II. The economy is primarily agriculture and tourism. The county has limited transportation infrastructure to cover the vast lands. The total road network of the county consists of 288.6 miles to cover the almost 4,000 square miles.

### City of Marfa, TX

Originally established as a water stop for the rail lines in the 1880's, Marfa's roots include cattle trade and military outposts. Located in northern Presidio County, Marfa is Texas' highest incorporated city that is also a major tourist destination for the arts industry thanks to a man named Donald Judd. This highly acclaimed art critic brought an entire new industry to Marfa while it was on the brink of collapsing. All the hype seems to be disappearing and has a new energy spurred by younger, trendy art gurus. The Marfa lights is a unique phenomenon that draws thousands of visitors each year to the Marfa Lights festival every Labor Day weekend. First seen over a hundred years ago, this sighting is a regular occurrence which some believe they are distant headlights while other say it's from out of this world.

The Marfa lights is a unique phenomenon that draws thousands of visitors each year to the Marfa Lights festival every Labor Day weekend. First seen over a hundred years ago, this sighting is a regular occurrence which some believe they are distant headlights while other say it's from out of this world.

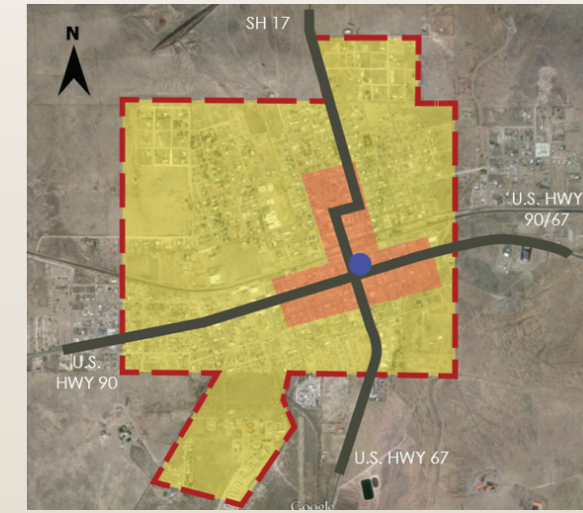
### City of Presidio, TX

Presidio is located at the US Mexico border and is one of seven international trade routes. As the largest city in the county, Presidio is thought to be the "oldest continuously cultivated area in the United States," as far back as 1500 B.C.. The people here are predominantly Hispanic and much of the workforce stems from homeland security and the school district.

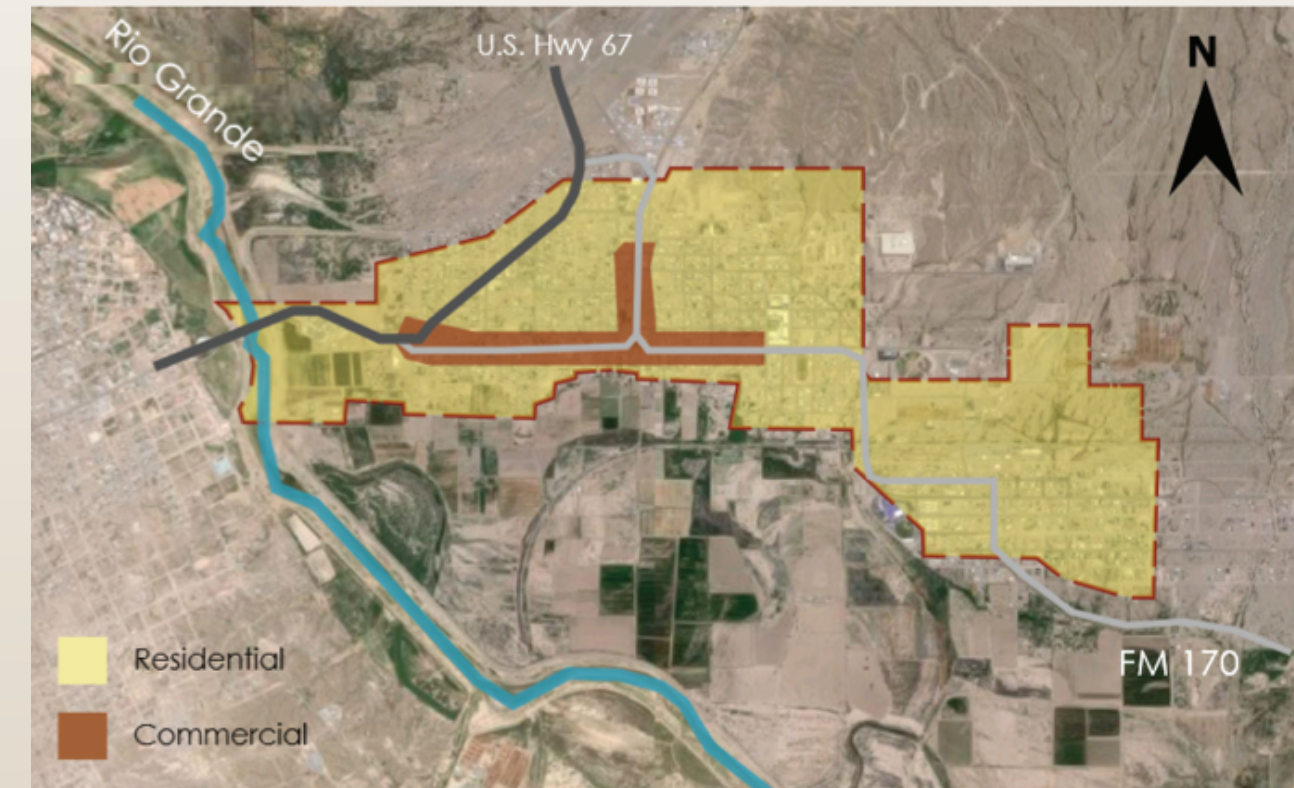
### Why Presidio County?

Due to the decentralization of information, Presidio presents a difficult challenge limited by the amount of public information available. Since the early 1970's, Presidio County has been revitalized by the arts and culture industry mixing cowboys and artists. There is much to learn on how a completely different industry can take a town by the horns and revitalize it. Some people think gentrification is happening while others are skeptical and believe it will fade away. What remains true in this county is one thing, and that while people come and go, the land will always be here.

### Marfa



### Presidio



## Population

### Total Population

	Presidio County	City of Marfa	City of Presidio	Texas
Population 2000	7,304	2,118	4,167	20,851,820
Population 2010	7,818	1,981	4,426	25,145,561
Percent change	+7.04%	-6.60%	+6.22%	+20.59%

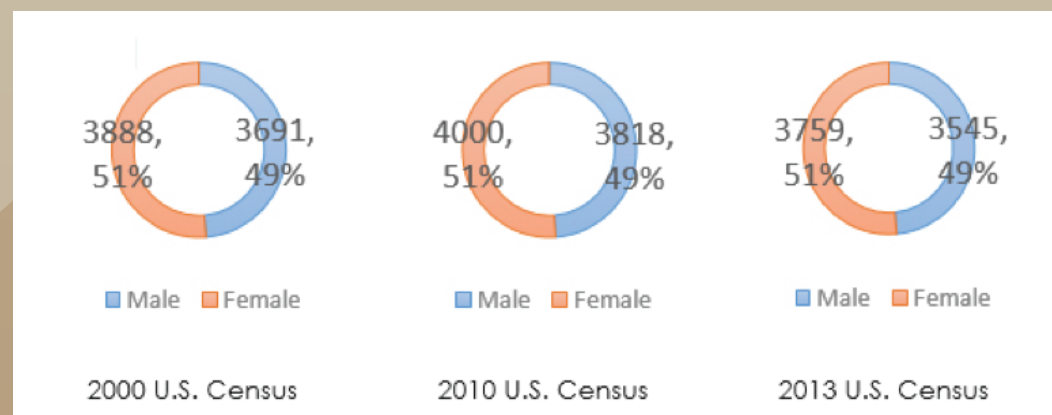
### Population by Race, 2010 Census

	Counts	Percentages
American Indian and Alaska native alone	57	0.73%
Asian alone	76	0.97%
Black or African American alone	47	0.60%
Some other race alone	771	9.86%
Two or more races	152	1.94%
White alone	6,715	85.89%

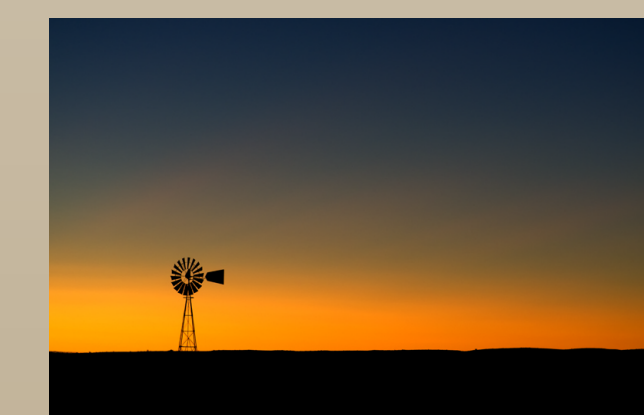
### Population by Hispanic or Latino, 2010 Census

	Count	Percentage
Hispanic or Latino(of any race)	6,521	83.4%
Mexican	6,218	79.5%
Puerto Rican	18	0.2%
Other Hispanic or Latino	285	3.6%
Not Hispanic or Latino	1,297	16.6%

### Population by Sex, 2010 Census

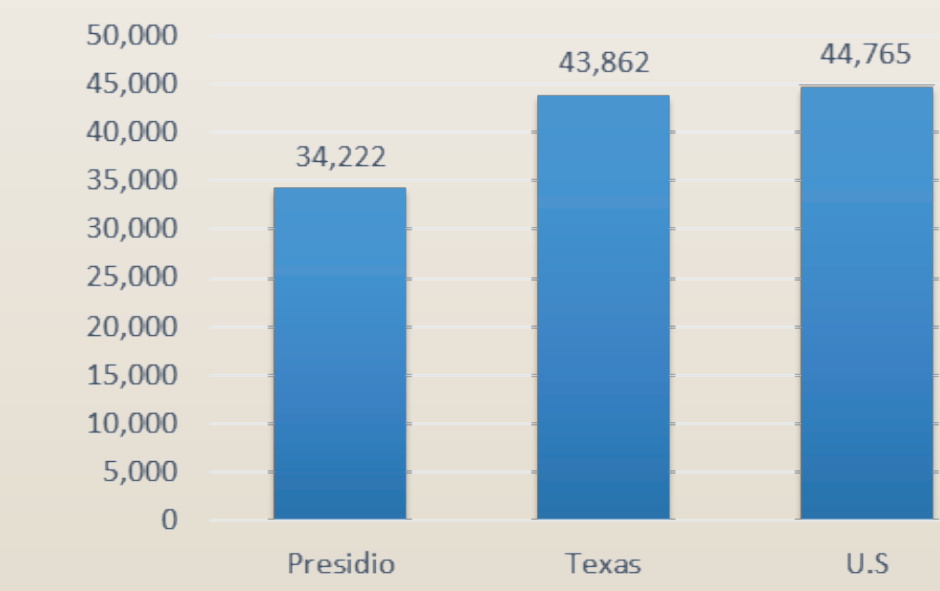


### Population Density by Block Group

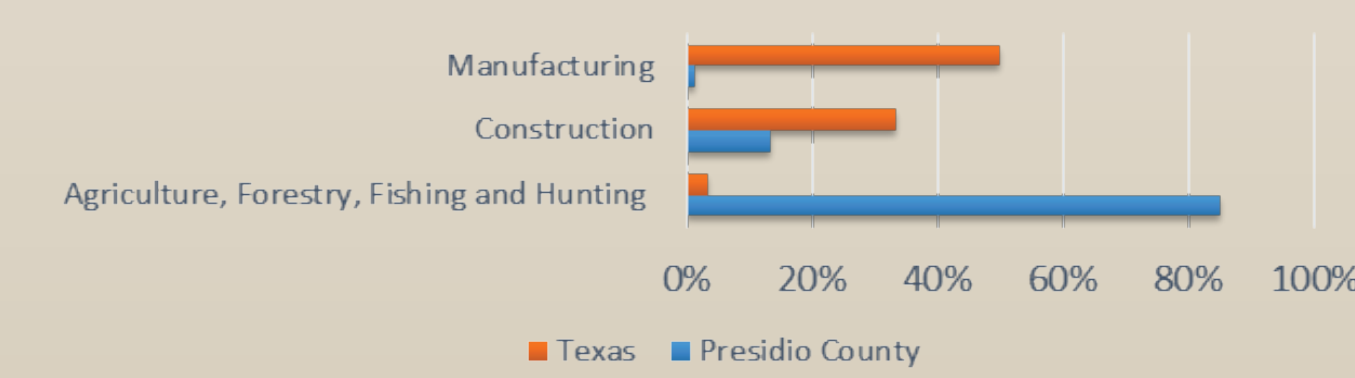


## Economy

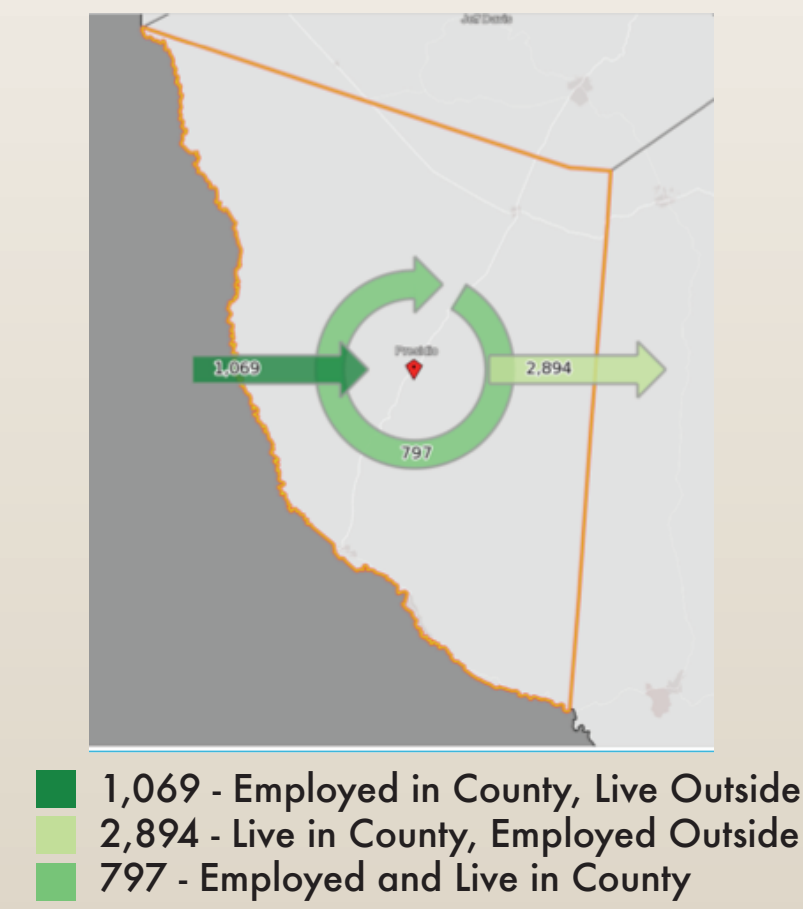
### Per Capita Personal Income, 2013



### Economic Structure for Texas & Presidio County, 2011

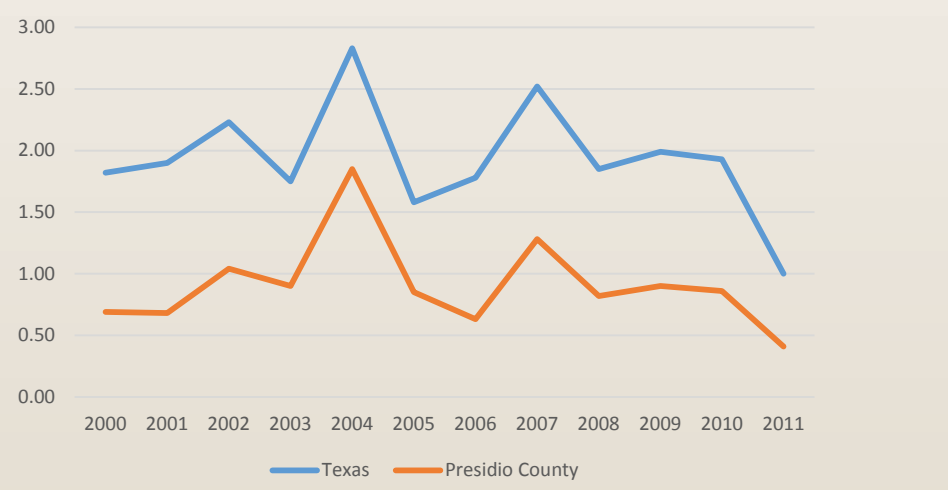


### Inflow/Outflow Analysis, 2011



## Environment

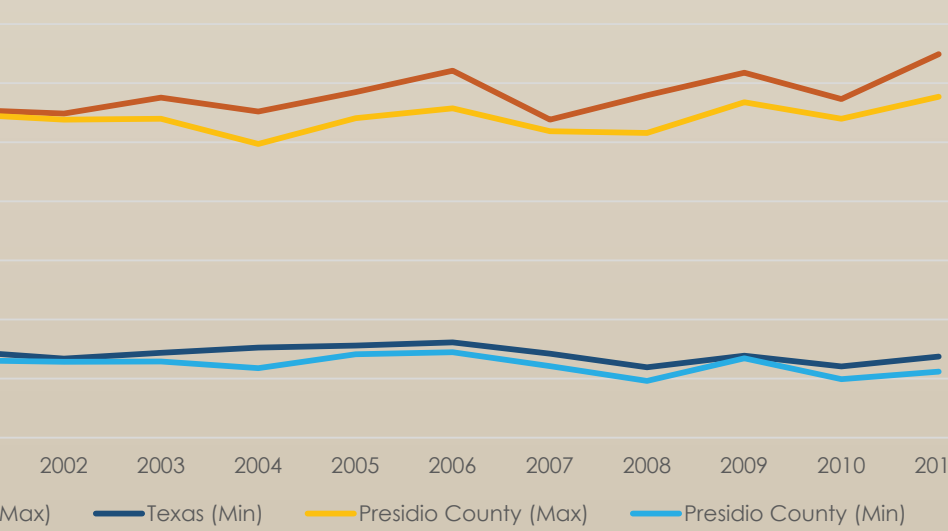
### Average Daily Precipitation (mm)



### Air Quality Fine Particulate Matter (PM2.5) (µg/m³)



### Average Daily Max and Min Air Temperature (F)



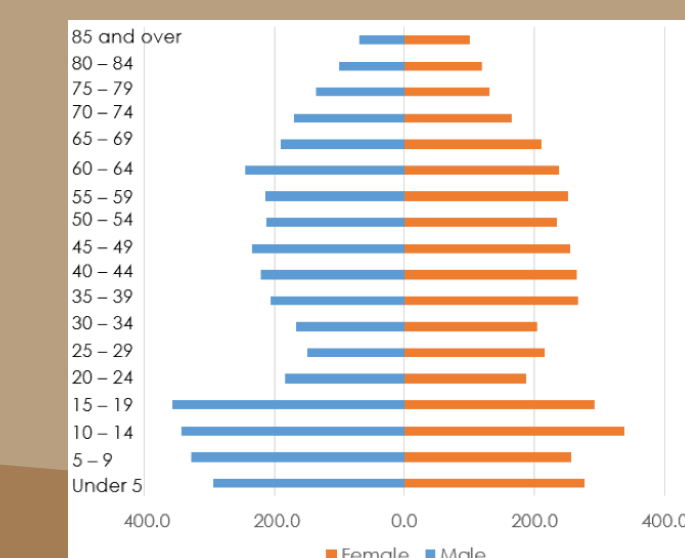
## SWOT Analysis

	Helpful	Harmful
<b>Internal Origin</b>	<b>Strengths</b> <ul style="list-style-type: none"> <li>Arts and Culture Industry</li> <li>Diversity of population</li> <li>Location of National and State Parks</li> <li>International Dark Sky Gold Tier Rating</li> <li>Marfa has a Chamber of Commerce catering to businesses</li> </ul>	<b>Weaknesses</b> <ul style="list-style-type: none"> <li>Lack of Regional/Comprehensive Plan</li> <li>Non-existent multi-family Housing</li> <li>More than half of housing stock is below \$50K</li> <li>Lack of medical care within 200 miles</li> <li>Road network is vast and extremely limited</li> <li>Air transportation limited to daylight hours</li> </ul>
<b>External Origin</b>	<b>Opportunities</b> <ul style="list-style-type: none"> <li>Develop a land use plan that meets the needs of the communities</li> <li>Develop a county comprehensive plan to forecast future needs</li> <li>Create a destination for the arts and culture within Texas</li> <li>Repair train crossing to stimulate the economy</li> <li>Bring additional hotels or business center</li> </ul>	<b>Threats</b> <ul style="list-style-type: none"> <li>Area subject to frequent drought</li> <li>Rio Grande river is subject to flash flooding from south of the border</li> <li>Air quality is rated poor</li> <li>Population (birth/death rates)</li> <li>Lack of diverse industrial base</li> </ul>

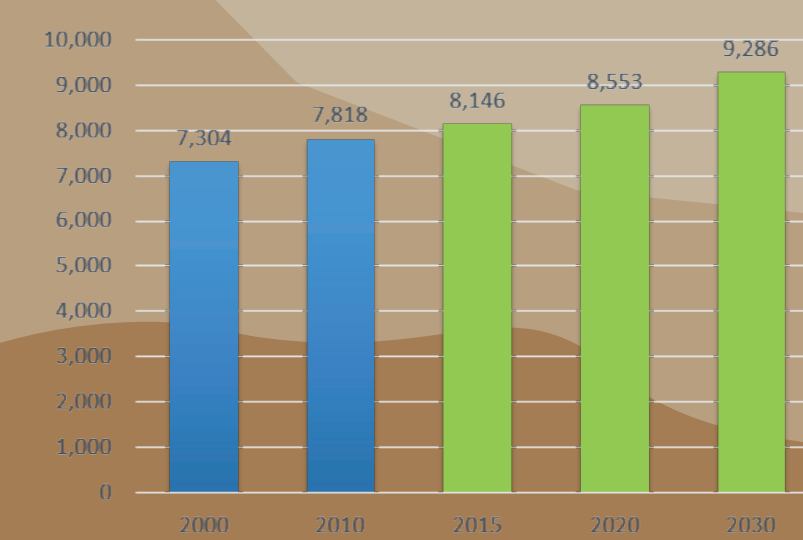


PRESIDIO

### Presidio County Age & Sex Pyramid, 2010

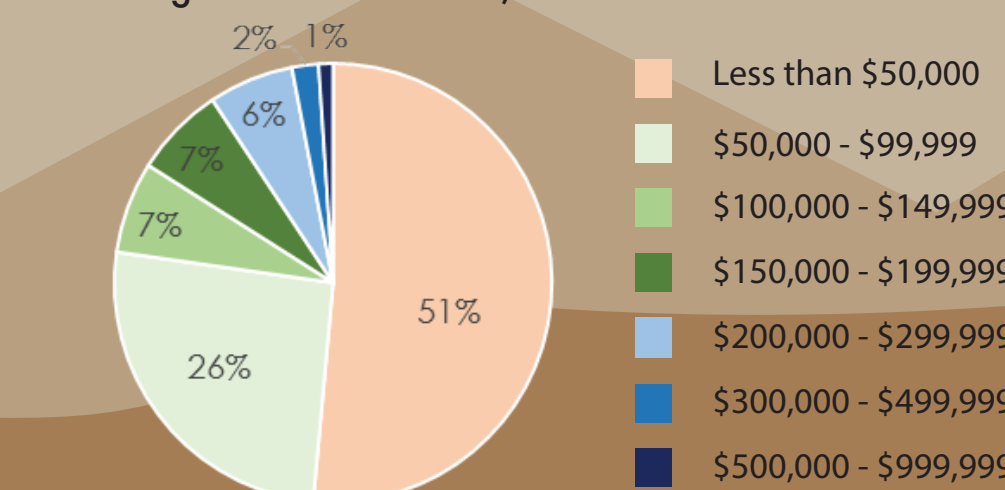


### Projected Population in Presidio County



## Housing

### Housing Value Distribution, 2013 ACS



### Housing Vacancy, Texas and Presidio County

