

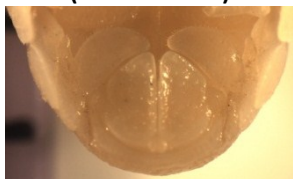
Appendix 8. Ventral shape of the fifth pleonite for selected *Tylos* specimens from the *Study Area* and worldwide samples.

Tylos punctatus
syntype



Tylos punctatus
San Diego, California
(USNM 89583)

A
Baja
Pacific /
California



Sea Cliff (USNM 236471)



Christy 3



Crystal 120_2



Capistrano 428_5



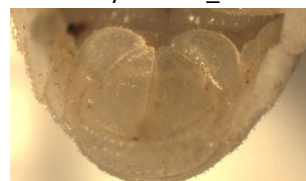
Ensenada 281_6



Arroyo Ancho 99_4



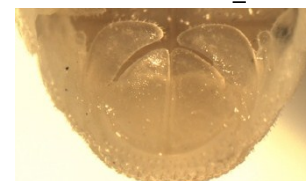
Isla Cedros 36_6



El Tomatal 268_5



San Hipólito 118_4



Abreojos 109_3

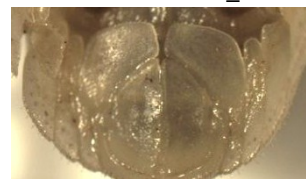
B
Mainland
Mexico
Pacific



Mazatlán 578_2



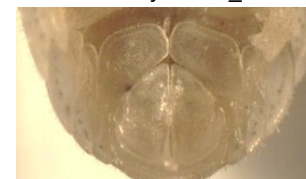
Mazatlán 579_2



Manzanillo 426_3



Michoacán 427_1



Zihuatanejo 113_2

C
Loreto



Loreto 54_1



Loreto 54_3



Loreto 54_4



Loreto 54_5

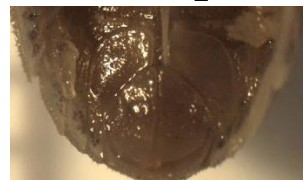


Loreto_54_6

E
BA I



Bahía de los Angeles 262_4



San Luis Gonzaga 272_6



Salsipuedes 569_3



Puerto Libertad 76_14



Choya 596_1

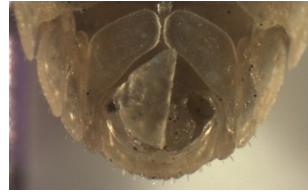
F
BA II



Las Gringas 265_8



Las Gringas 265_4



Bahía de los Angeles 394_1

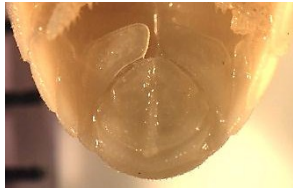


San Lucas 88_2

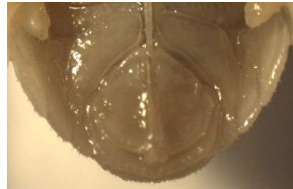


Salsipuedes 569_1

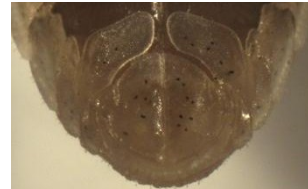
G
North



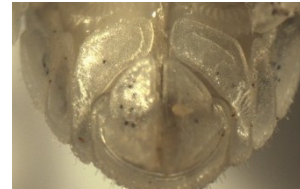
Puerto Peñasco
(USNM 112670)



Choya 284_2



Puerto Libertad 76_13



San Carlos 12_4



San Felipe 277_2



San Luis Gonzaga 269_4



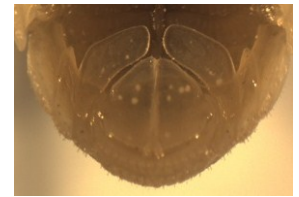
Isla Tiburón 7_3



Bahía de los Angeles W_2



San Rafael 129_6

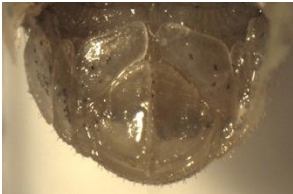


San Francisquito 123_5

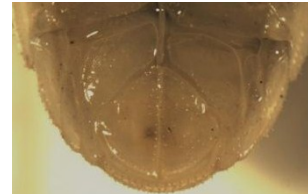
H
Middle



Santa Rosalía NW_3



San Nicolás 45_3



Buenaventura 50_4



San Bruno 43_3

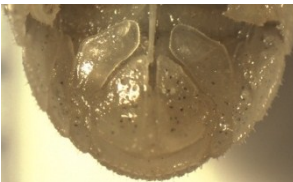


Loreto 54_8

I
South



El Sahuaral (LACM66-273.2)



San Evaristo 102_4



El Cajete 58_4



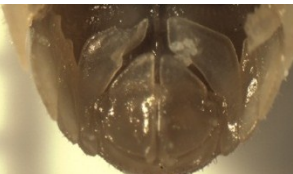
Los Barriles 416_1



Puerta del Arco 69_4



Puerta del Arco 69_2



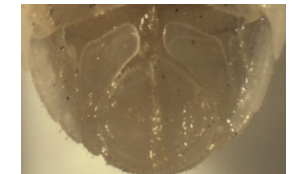
La Paz 59_4



La Paz 59_1















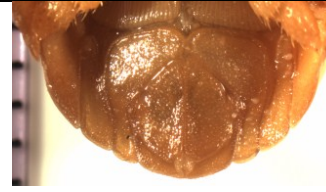
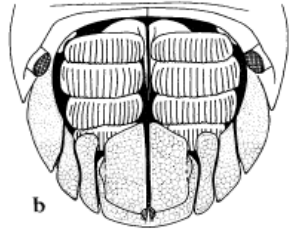
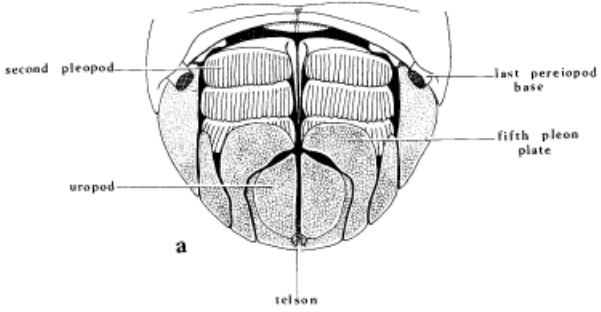
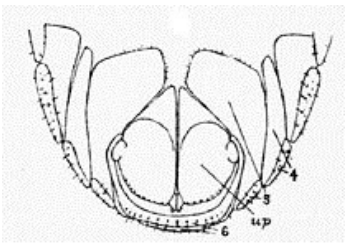


Isla Partida 62_4



Espíritu Santo 60_3

Tylos worldwide species

				
1. <i>Tylos niveus</i> 28_1, Puerto Rico (Aguada)	2. <i>Tylos marcuzzii</i> Tmar_2, Cuba (Pinar del Rio)	3. <i>Tylos spinulosus</i> Cal_1, Chile (Calteta Choros)	4. <i>Tylos chilensis</i> CH_1, Chile (Punta Tralca)	5. <i>Tylos wegneri</i> #08, Costa Rica (Golfo Nicoya)
				
6-1. <i>Tylos granuliferus</i> Hyo_2, Japan (Hyogo)	6-2. <i>Tylos granuliferus</i> CY_1, Korea (Jeju Island)	7. <i>Tylos albidus</i> Ta_1, Malvides Islands	8-1. <i>Tylos opercularis</i> To_1, Sulawesi (Palu)	8-2. <i>Tylos opercularis</i> To_2, Australia (Queensland)
				
9. <i>Tylos europaeus</i> 25_2, Italy (Tuscany)	10. <i>Tylos ponticus</i> 27_2, Greece (Crete)	11. <i>Tylos maindroni</i> Tma_1, Kuwait (Wafra)	12. <i>Tylos exiguus</i> Tex_1, Yemen (Socotra Island)	13. <i>Tylos granulatus</i> Gr_1, South Africa (Cape town)
14. <i>Tylos minor</i> 15. <i>Tylos neozelanicus</i>				
No Images	16. <i>Tylos capensis</i> (Kensley 1974)	17. <i>Tylos granulatus</i> (Kensley 1974)	18. <i>Tylos insularis</i> (VanName 1924)	